

## LG LAUNDRY

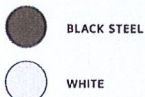
## PW2 LOT 364 - DRYER

**DLEX6500\_ / ~~DLGX6501\_~~**

7.4 cu. ft. Capacity Energy Star Smart Front Load Dryer with  
 AI Sensor Dry & TurboSteam®

7.4 cu. ft. Ultra Large Capacity  
 Digital Dial Control with LCD Display & Touch Button Control Panel  
 AI Sensor Dry with Smart Pairing  
 TurboSteam®, SteamFresh®, and SteamSanitary® Technology  
 Wrinkle Care Option  
 LG ThinQ® Technology with ThinQ Care  
 FlowSense® Duct Clogging Indicator  
 Tempered Glass Door (Reversible)  
 NeveRust® Stainless Steel Drum  
 ENERGY STAR® Certified

## AVAILABLE COLORS


**Proactive Smart Alerts to Keep  
 Your Appliances Running Smoothly**

- Preventative Alerts help you stay a step ahead of potential issues to find proactive solutions before problems arise.
- Avoid preventable repairs and service calls with real-time diagnostics for a hassle-free experience.
- Integrated within LG's ThinQ app—a smart home hub for managing your smart devices and appliances.

## ThinQ Care

SUMMARY		FABRIC CARE FEATURES		POWER SOURCE	
Type	Front Load Dryer	AI Sensor Dry	Yes	Ratings	CSA Listed
Vent Type	Vented	Sensor Dry	Yes	Electrical Requirements	Elec: 120/240V, 60Hz, 26A / Gas: 120V, 60Hz, 11.5A
Dryer Type	Elec: DLEX6500B / DLEX6500W Gas: DLGX6501B / DLGX6501W	Precise Temperature Control with Variable Heater	Yes	Type	Electric, Gas
Capacity	7.4 cu. ft.	Steam	TurboSteam®	BTU Rating	Gas: 20,000
Matching Washer	WM6500HBA / WM6500HWA	CONVENIENCE FEATURES		OPTIONS	
Sensor Dry	Yes	3 Minute Installation Check	Yes	LP Conversion Kit	383EEL3002D
Steam	Yes	End of Cycle Signal	Yes	Side Venting Kit	3911EZ9131X
Color	Black Steel (B), White (W)	Drum Light (Door Open)	Yes	Drying Rack	3750EL1001A
APPEARANCE		Reversible Door	Yes	Pedestal	WDP6B, WDP6W
LCD Display	Yes	FlowSense® Duct Clogging Indicator	Yes	Pedestal (WxHxD)	27" x 13 5/8" x 28" (43 7/8" D with door open)
Touch Buttons	Yes	Wrinkle Care Option	Yes	DIMENSIONS	
Dial-A-Cycle®	Yes	Control Lock	Yes	Product (WxHxD)	27" x 39" x 29 3/4"
DRYER PROGRAMS		Venting Option	Electric: 4 Way Venting / Gas: 3 Way Venting	Depth with Door Open	51 3/8"
No. of Programs	23	4 Adjustable Legs	Yes	Carton (WxHxD)	28 31/32" x 46 29/64" x 31 27/64"
Programs (Sensor Dry)	Normal, AI Dry, Bedding, Delicates, Towels, Quick Dry, Timed Dry, Power Dry, Perm. Press, SteamFresh™, Heavy Duty, Air Dry, Steam Sanitary™, Super Dry, Active Wear, Denim → Jeans, Blanket Refresh, Low Temp Dry, Overnight Dry, Easy Ironing, Small Load, Large Load Dry, X Large Load Dry	ThinQ® TECHNOLOGY		Product Weight (lbs.)	Electric: 124.3 lbs. / Gas: 136.0 lbs.
		Smart Diagnosis	Yes	Carton Weight (lbs.)	Electric: 136.5 lbs. / Gas: 146.6 lbs.
		Wi-Fi	Yes	LIMITED WARRANTY	
		ThinQ Care	Yes	Parts & Labor	1 Year
		Remote Start and Cycle Monitor	Yes	Drum	3 Years
No. of Options	11	Energy Monitoring	Yes	UPC CODES	
Options	Cycle Optimization, Damp Dry Signal, Wrinkle Care, Control Lock, Wi-Fi, Energy Saver, TurboSteam®, Reduce Static, Remote Start, Drum Light, Signal	ENERGY		DLEX6500B (Black)	195174052945
		ENERGY STAR® Certified	Yes	DLGX6501B (Black)	195174052969
		CEF	Electric: 3.94 / Gas: 3.49	DLEX6500W (White)	195174049075
Temperature Settings	High, Med. High, Medium, Low, Ultra Low	MATERIALS AND FINISHES		DLGX6501W (White)	195174048535
		NeveRust® Stainless Steel Drum	Yes		
		Cabinet	Painted Steel		
Drying Levels	Very Dry, More Dry, Normal Dry, Less Dry, Damp Dry	Door	Tempered Glass Door		
Manual Dry Times	10 min - 100 min (10 min incremental)	All Available Colors	Black Steel (B), White (W)		



## Product Specifications

Model		DL*X670** / DL*X650** / DL*X550**
<b>Electrical Requirements</b>		Please refer to the rating label for detailed information.
<b>Min. / Max. Water Pressure</b>		20 - 120 psi (138 - 827 kPa)
<b>Dimensions (Width X Depth X Height)</b>		27" X 29 3/4" X 39" (68.6 cm X 75.6 cm X 98.9 cm)
<b>Maximum Depth with Door Open</b>		51 3/8" (130.5 cm)
<b>Net Weight</b>		Gas : 136.03 lb (61.7 kg) - 139.34 lb (63.2 kg) Electric : 121.9 lb (55.3 kg) - 125.3 lb (56.8 kg)
<b>Capacity</b>	<b>Steam Cycle</b>	7.4 cu.ft. (8 lb / 3.6 kg)
	<b>Normal Cycle</b>	7.4 cu.ft. (22.5 lb / 10.2 kg)
<b>Gas Requirements</b>		NG: 4 - 10.5-inch (10.2 - 26.7 cm) WC WC LP: 8 - 13-inch (20.4 - 33.1 cm) WC



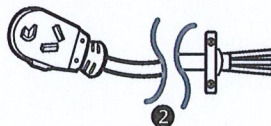
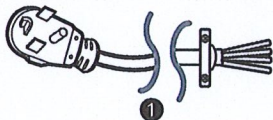
## Accessories

### Included Accessories



- ① Y Connector

### Required Accessories for the Electric Dryer (sold separately)



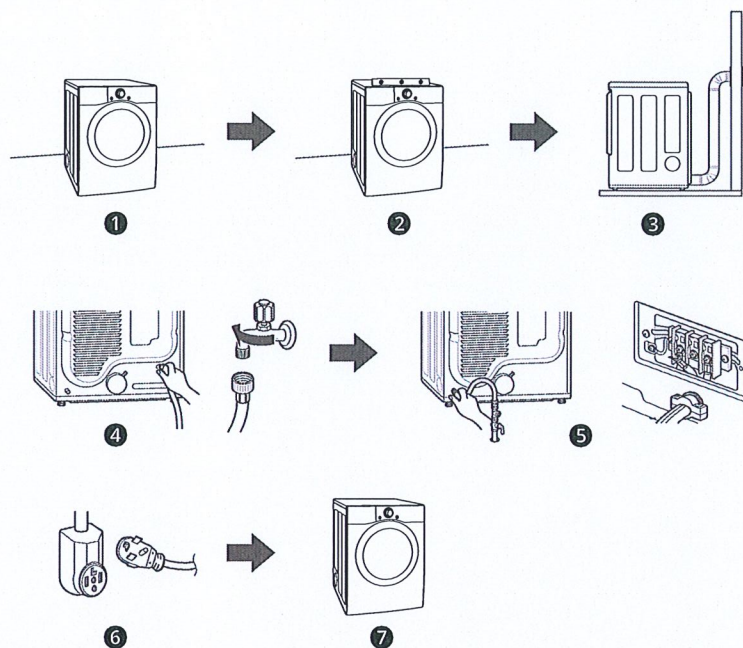
- ① 4-wire power cord kit  
② 3-wire power cord kit

# INSTALLATION

## Before Installing

### Installation Overview

Please read the following installation instructions first after purchasing this dryer or transporting it to another location.



- ❶ Choose the proper location.
- ❷ Level the appliance.
- ❸ Vent the appliance.
- ❹ Connect the inlet hose (for steam models)
- ❺ Connect the Gas / Electric dryer.
  - Purchase a UL-listed, 3-wire or 4-wire power cord kit with UL-listed strain relief (electric dryer only)
- ❻ Plug in the power cord.
- ❼ Installation test and test run.
  - Refer to the **Test Exhaust System** section in **INSTALLATION**.



## 12 INSTALLATION

### Choosing the Proper Location

#### WARNING

- Read all installation instructions completely before installing and operating the appliance. It is important that you review this entire manual before installing and using the appliance. Detailed instructions concerning electrical connections and additional requirements are provided on the following pages.

#### Exhaust

- The location must allow for proper exhaust installation. A gas dryer must be exhausted to the outdoors.

#### Electricity

Use an individual, grounded electrical outlet located within 2 ft. (61 cm) of either side of the appliance.

#### WARNING

- Do not install or store the appliance in an area where it will be exposed to water and/or weather.

#### NOTE

- Check code requirements that limit, or do not permit, installation of the dryer in garages, mobile homes or sleeping quarters. If you have questions, contact your local building inspector.

- For garage installation, you will need to place the appliance at least 18 inches (45.7 cm) above the floor. The standard pedestal height is 15 inches (38 cm). You will need 18 inches (45.7 cm) from the garage floor to the bottom of the appliance.

#### Ambient Temperature

Install the appliance in an area where the temperature is over 45 °F (7 °C).

If the temperature around the appliance is too low, the appliance might not shut off at the end of an automatic cycle. This can result in longer drying times.

#### Flooring

To avoid noise and vibration, the appliance must be installed and leveled on a solidly constructed floor with a maximum slope of 1 inch (2.5 cm). If required, adjust the leveling legs to compensate for the unevenness of the floor.

#### NOTE

- A sturdy floor is needed to support the total appliance weight when loaded. The combined weight of additional appliances should also be considered.
- Clothes may not tumble properly, and automatic sensor cycles may not operate correctly if the appliance is not level.

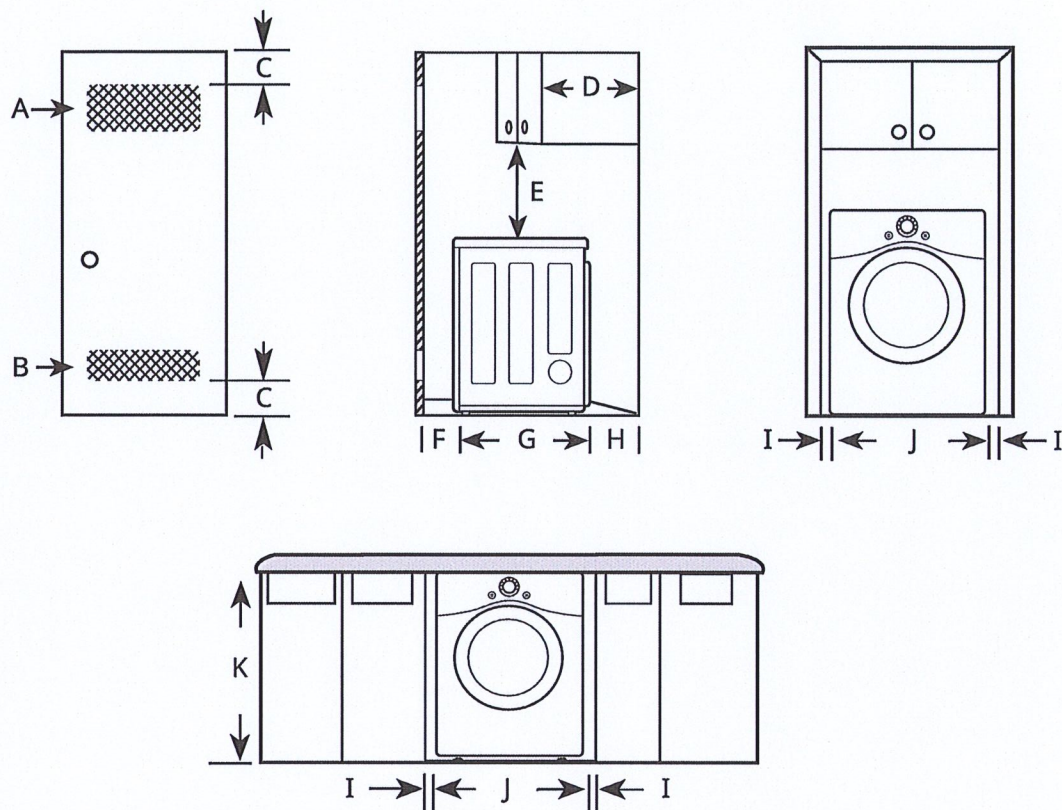


## Dimensions and Clearances

The following clearances are recommended for the appliance.

- Additional clearances should be considered for ease of installation and servicing.
- Additional clearances should be considered on all sides of the dryer to reduce noise transfer.

### Installation Spacing for Recessed Area or Closet Installation



-	Description	Dimension/Clearance
A	Upper Ventilation Opening	$\geq 48$ sq. in. (310 cm <sup>2</sup> )
B	Lower Ventilation Opening	$\geq 24$ sq. in. (155 cm <sup>2</sup> )
C	Distance to Ventilation Opening	$\geq 3''$ (76 mm)
D	Overhead Cabinet Depth	$\leq 14''$ (356 mm)
E	Distance to the Overhead Cabinet/Shelf	$\geq 18''$ (457 mm)
F	Front Clearance	$1''$ (25 mm)
G	Depth	$29 \frac{3}{4}''$ (756 mm)
H	Back Clearance	$\geq 5''$ (127 mm)
I	Side Clearance	$\geq 1''$ (25 mm)
J	Width	$27''$ (686 mm)
K	Height of Cabinet Opening	$39''$ (989 mm)



## 14 INSTALLATION

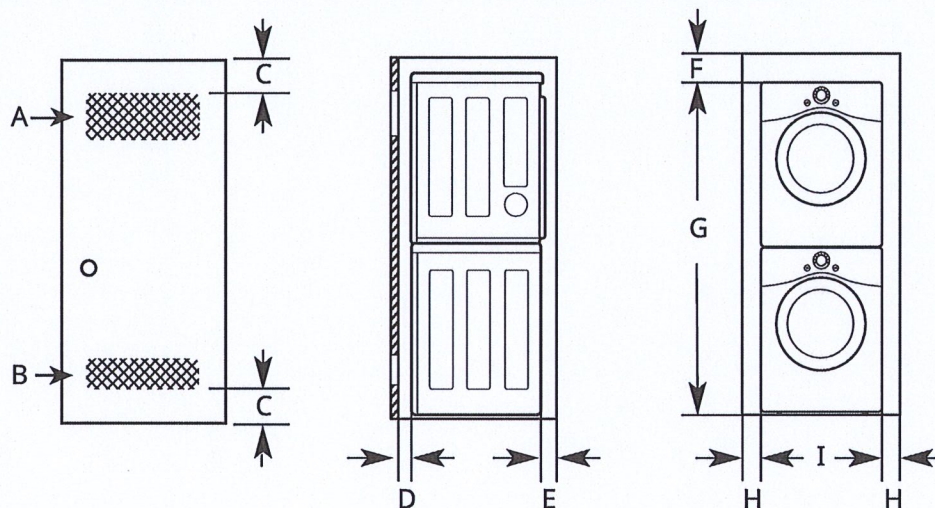
### Closet Ventilation Requirements

Closets with doors must have both an upper and lower vent to prevent heat and moisture buildup in the closet. One upper vent opening with a minimum opening of 48 sq. in. (310 cm<sup>2</sup>) must be installed no lower than 6 feet above the floor. One lower vent opening with a minimum opening of 24 sq. in. (155 cm<sup>2</sup>) must be installed no more than one foot above the floor. Install vent grilles in the door or cut down the door at the top and bottom to form openings. Louvered doors with equivalent ventilation openings are also acceptable.

### NOTE

- There should be at least a little space around the dryer (or any other appliance) to eliminate the transfer of vibration from one appliance to another. If there is enough vibration, it could cause appliances to make noise or come into contact, causing paint damage and further increasing noise.
- No other fuel-burning appliance can be installed in the same closet as a dryer.

### Installation Spacing for Recessed Area or Closet, with Stacked Washer and Dryer

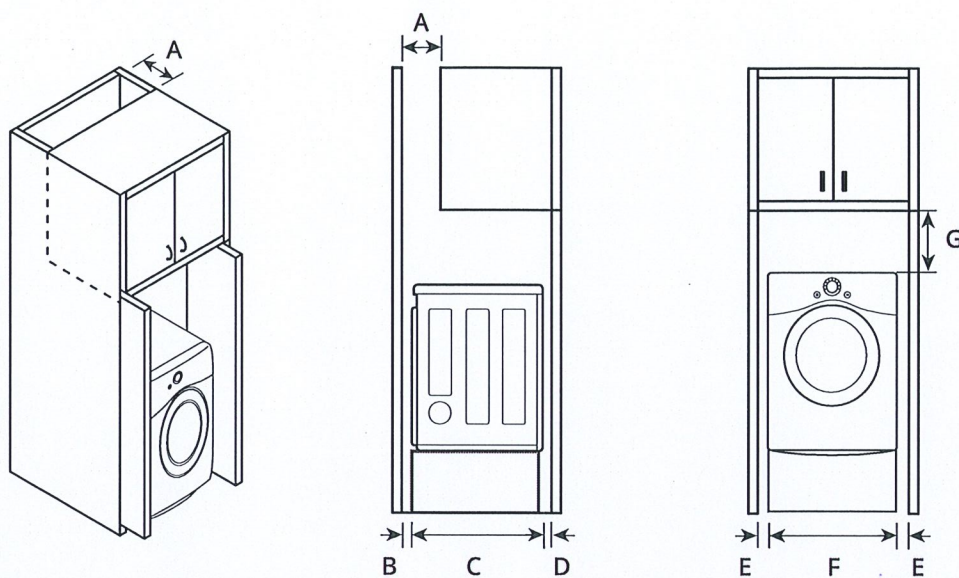


-	Description	Dimension/Clearance
A	Upper Ventilation Opening	≥ 48 sq. in. (310 cm <sup>2</sup> )
B	Lower Ventilation Opening	≥ 24 sq. in. (155 cm <sup>2</sup> )
C	Distance to Ventilation Opening	≥ 3" (76 mm)
D	Front Clearance	≥ 1" (25 mm)
E	Back Clearance	≥ 5 1/2" (140 mm)
F	Top Clearance to the Ceiling	≥ 6" (152 mm)
G	Height to the Top of Stacked Appliances <sup>†</sup>	78" (1980 mm)
H	Side Clearance	≥ 1" (25 mm)
I	Width <sup>†</sup>	27" (686 mm)

<sup>†</sup> Differs depending on the washer dimensions.



## Installation Spacing for Cabinet



ENGLISH

For cabinet installation with a door, minimum ventilation openings in the top of the cabinet are required.

-	Description	Dimension/Clearance
A	Depth of Ventilation Opening	$\geq 7''$ (178 mm)
B	Back Clearance	$\geq 5''$ (127 mm)
C	Depth	29 3/4'' (756 mm)
D	Front Clearance	$\geq 1''$ (25mm)
E	Side Clearance	$\geq 1''$ (25 mm)
F	Width	27'' (686 mm)
G	Clearance to Top of Cabinet	$\geq 9''$ (229 mm)