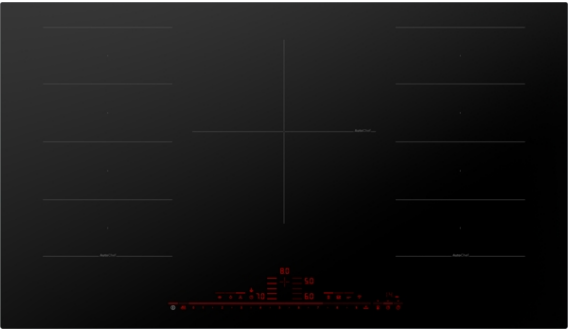


**Benchmark®, Induction Cooktop, 36",
Black
NITP660UC**



**FlexInduction® cooktop allows you to place
your cookware wherever you want on the
flexible cooking zone.**

- **DirectSelect Premium:** Direct, simple selection of the desired cooking zone, power and additional functions.
- **FlexInduction®** - provides more flexibility by combining two cooking zones into one larger zone.
- **AutoChef®** - regulates temperatures continuously during frying and adjusts them precisely as needed.
- **With Home Connect®,** remotely monitor your cooktop to check if you inadvertently left it on.
- **PowerMove®** - divides FlexInduction® into 3 preset power level zone. Simply move the cookware to change the power level.

Technical Data

Sealed Burners : No
Burners with booster : All
Power of 2nd heating element (W) : 3.3 kW



Optional accessories

HEZ390210 : System pan diameter 15 cm
HEZ390220 : System pan diameter 19 cm
HEZ390230 : System pan diameter 21cm
HEZ390512 : Teppan Yaki (large)

LG LAUNDRY

~~DLEX8900B / DLGX8901B~~

9.0 cu. ft. Front Load Dryer with TurboSteam™ and Built-In Intelligence

9.0 cu. ft. Mega Capacity

TurboSteam™ Technology

Built-In Intelligence (AI Fabric Sensor / Smart Pairing™)

ThinQ® Technology with Proactive Customer Care

FlowSense™ Duct Clogging & Lint Filter Indicators

ENERGY STAR® Certified

NeveRust™ Stainless Steel Drum

LoDecibel™ Quiet Operation

Reversible Door

Wrinkle Care Option

LG ThinQ®

works with the
Google AssistantWORKS WITH
alexa

Enjoy new ways to control your home with LG smart appliances

- Use the ThinQ® app to start the laundry while you're out
- Get alerts when the cycle is finished
- Proactive Customer Care offers preventative maintenance tips

SUMMARY

Type	Front Load Dryer
Capacity	9.0 cu. ft.
Matching Washer	WM8900HBA
AI Sensor Dry™	Yes
TurboSteam™	Yes

APPEARANCE

Intelligent Electronic Controls with Dual LED Display	Yes
Touch Buttons	Yes
Dial-A-Cycle™	Yes

DRYER PROGRAMS

No. of Programs	12
Programs (Sensor Dry)	Normal, Perm Press, Towels, Delicates, Heavy Duty SteamFresh™, SteamSanitary™, Bedding, Small Load Speed Dry, Air Dry, Downloaded
Programs (Manual Dry)	
No. of Options	12
Options	TurboSteam™, Damp Dry Signal, More Time, Less Time, Wrinkle Care, Energy Saver Control Lock, Reduce Static, Signal, Drum Light, Wi-Fi, Remote Start

Temperature Settings	High, Medium High, Medium, Low, Ultra Low
Drying Levels	Very Dry, More Dry, Normal Dry, Less Dry, Damp Dry
Manual Dry Times	60 min., 50 min., 40 min., 30 min., 20 min., More Time/Less Time

FABRIC CARE FEATURES

AI Sensor Dry™	Yes
TurboSteam™	Yes
Precise Temperature Control with Variable Heater	Yes

CONVENIENCE FEATURES

LoDecibel™ Quiet Operation	Yes
End of Cycle Signal	Yes
Drum Light	Yes
Reversible Door	Yes
FlowSense™ Duct Clogging Sensor	Yes
Venting Option	Electric: 4 Way Venting / Gas: 3 Way Venting
Leveling Legs	4 Adjustable Legs
Remaining Time Display/Status Indicator(s)	Yes
3 Minute Installation Check	Yes

LG THINQ™ TECHNOLOGY

Proactive Customer Care (PCC)	Yes
SmartDiagnosis™	Yes
Wifi Connectivity	Yes
Energy Monitoring	Yes (Wifi)
Remote Start and Cycle Monitor	Yes

WTR3 - LOT 67



AVAILABLE COLORS



BLACK STEEL



ENERGY

ENERGY STAR® Certified	Yes
CEF	3.94 Electric, 3.49 Gas

MATERIALS AND FINISHES

NeveRust™ Stainless Steel Drum	Yes
Tub Rear	STS
Cabinet	Painted Steel
Control Panel	Touch Buttons
Door	Glass/Chrome
Door Cover	Dark Blue Tinted Square Cover
Available Colors	Black Steel (B)

POWER SOURCE

Ratings	CSA Listed
Electrical Requirements	120V, 15 Amps (Gas) / 240V, 30 Amps (Electric)
Type	Gas/Electric
BTU	Gas: 20,000

OPTIONS

Side Venting Kit	383EEL9001L
Sidekick (Miniwash)	WD200CB
Pedestal	WDP5B
Pedestal (WxHxD)	29" x 14 1/8" x 30 7/8" (50 9/16 with drawer open)
Stacking Kit	KSTK2

DIMENSIONS

Product (WxHxD)	29" x 40 3/4" x 32 1/8" (59" with door open)
Carton (WxHxD)	31 1/2" x 45 1/8" x 33 7/8"
Weight (Product/Carton) Electric	155 lbs / 170.6 lbs
Weight (Product/Carton) Gas	161 lbs / 171.5 lbs

LIMITED WARRANTY

Parts and Labor	1 Year
Drum	3 Years

UPC CODES

DLEX8900B Dryer (Black Steel Electric)	195174024836
DLGX8901B Dryer (Black Steel Gas)	195174024843
WM8900HBA Washer (Black Steel)	195174024829
WDP5B Pedestal (Black Steel)	048231026468
KSTK2 Stacking Kit (Chrome)	048231013017
WD200CB Sidekick™ Pedestal Washer (Black Steel)	048231026482

WTR3 - LOT 67 KDFM404KPS

24" Dishwasher

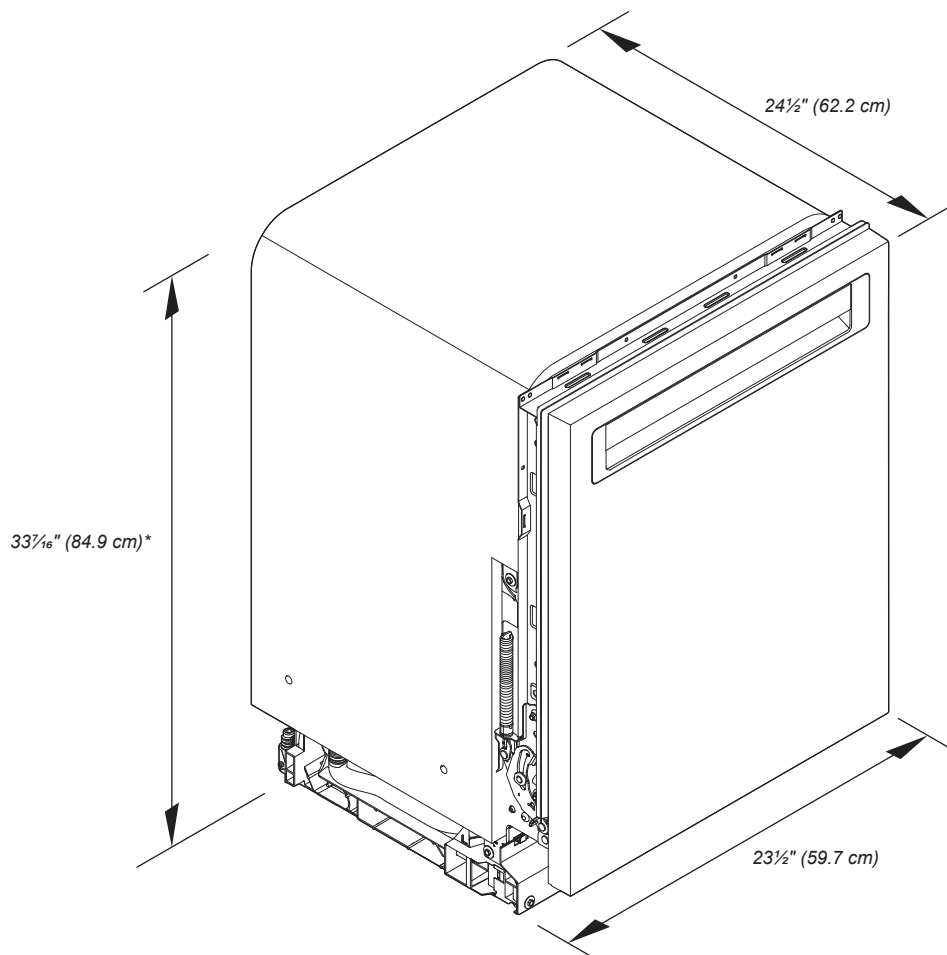
KitchenAid®

DETAILED PLANNING DIMENSIONS GUIDE

Applies to all model numbers starting with;

KDFE104K, KDTE104K, KDFE204K, KDTE204K, KDTE304LPA,
KDFM404K, KDTM404K, KDPM604K, KDTM604K, KDPM704K,
KDTM704K, KDTM704LPA, KDPM804K, KDTM804K

PRODUCT DIMENSIONS



*Dishwasher can be raised 1 7/16" (3.7 cm) with feet fully extended.

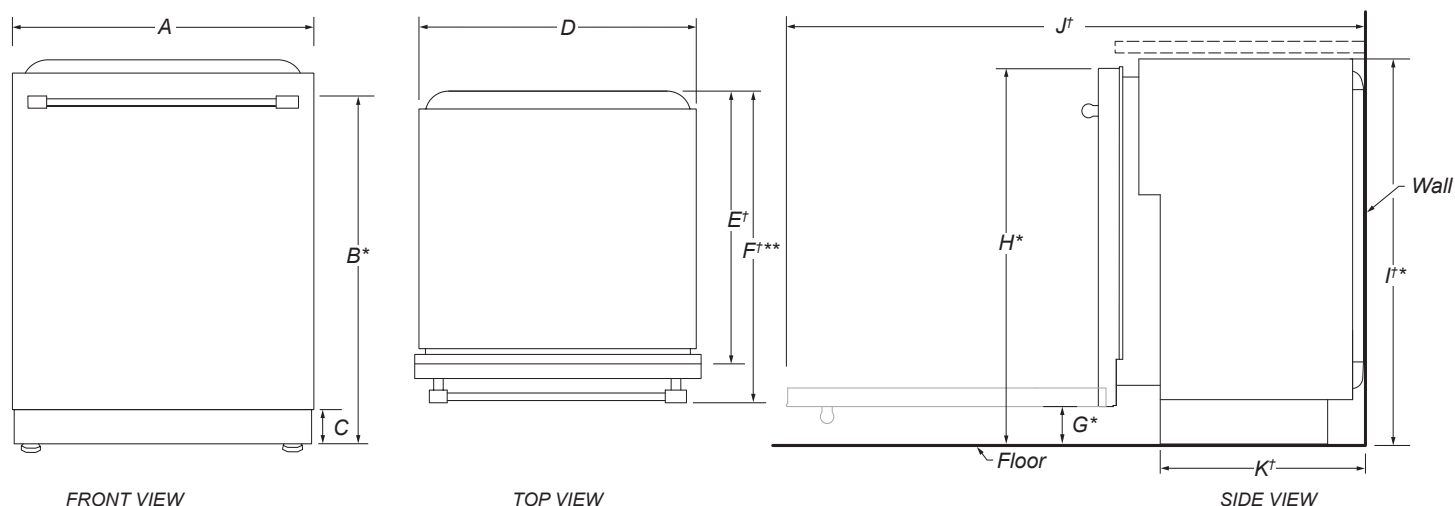
Because Whirlpool Corporation policy includes a continuous commitment to improve our products, we reserve the right to change materials and specifications without notice.

Dimensions are for planning purposes only. For complete details, see Installation Instructions packed with product. Specifications subject to change without notice.

24" Dishwasher

DETAILED PLANNING DIMENSIONS GUIDE

PRODUCT DIMENSIONS (CONTD.)



	DESCRIPTION	DIMENSIONS
A	Width of door	23½" (59.7 cm)
B*	Height to top of handle	30⅜" (78.3 cm)
C	Height of adjustable toe kick	3⅝" (8.4 cm) - min. 4⅛" (11.8 cm) - max.
D	Width of recessed dishwasher	22⅝" (57.4 cm)
E†	Depth without door	22⅝" (57.5 cm)
F†**	Depth with Towel Bar Handle	26⅞" (68.3 cm)
	Depth with Pocket Handle	24½" (62.6 cm)
	Depth of Panel-Ready Models	24" (61.0 cm)
G*	Height to bottom of door (min.)	3⅝" (8.4 cm)
H*	Height to top of door (min.)	33⅞" (84.9 cm)
I*	Height of recessed dishwasher (min.)	33⅝" (85.4 cm)
J†	Depth with door fully open (min.)	50⅜" (127.4 cm)
K†	Depth with toe kick (min.)	20⅜" (52.9 cm)

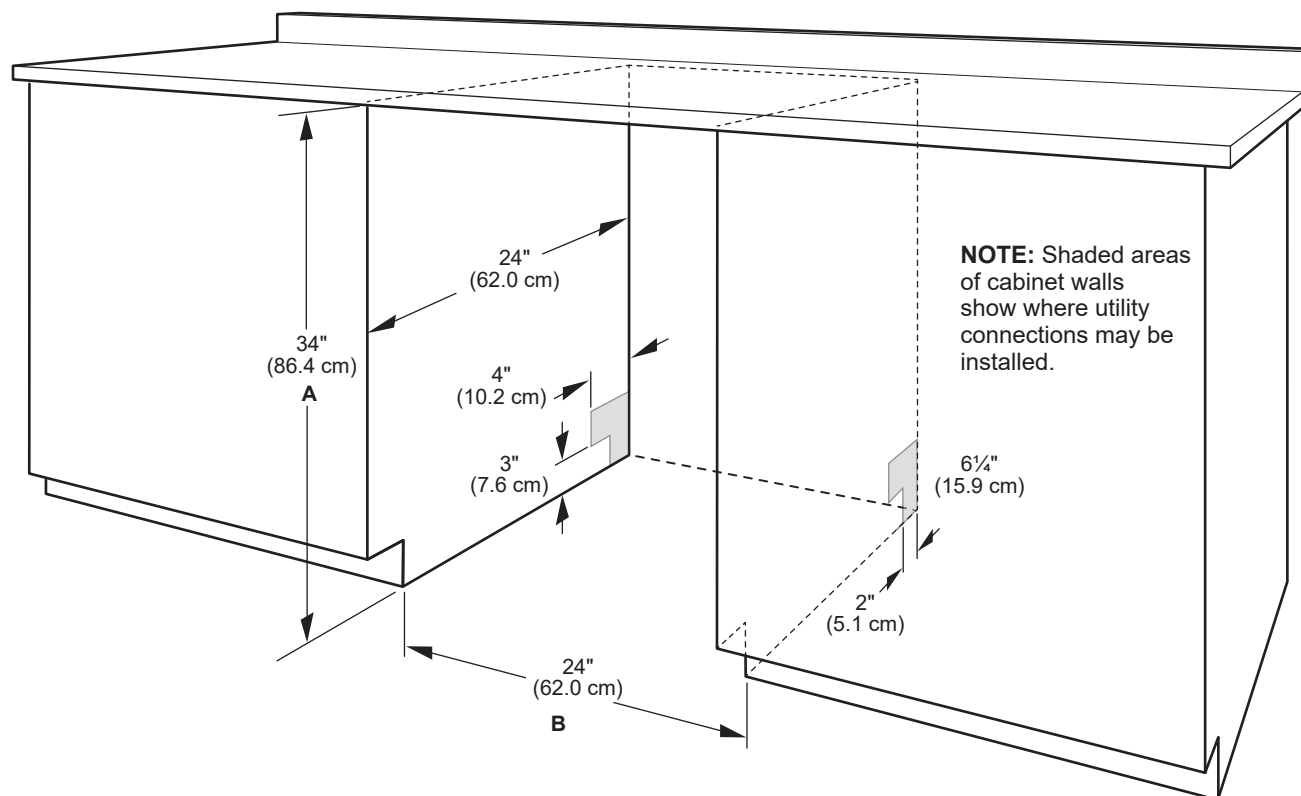
†Insulation blanket thickness adds up to 11/16" (1.8 cm) but can crush up to 1/8" (0.3 cm).

*Dishwasher can be raised 1⅞" (3.7 cm) with feet fully extended.

**For panel-ready models, dishwasher depth is 24" (61.0 cm), not including the 3/4" (1.9 cm) custom door panel.

OPENING/CLEARANCE DIMENSIONS

IMPORTANT: Check that all surfaces have no protrusions that would prohibit dishwasher installation.



A. Measured from the lowest point on the underside of the countertop. May be reduced to 33 1/2" (85.1 cm) by removing the wheels and perforated area of insulation (blanket) on dishwasher.

B. Minimum, measured from narrowest point of opening.

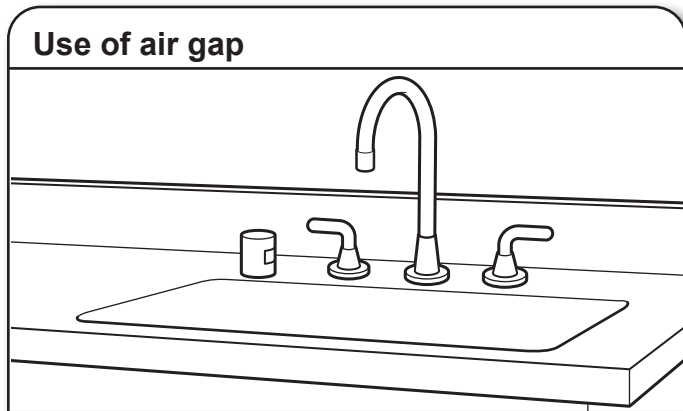
NOTE: Corner locations require a 2" (5.1 cm) minimum clearance between the side of the dishwasher door and the wall or cabinet.

DRAIN REQUIREMENTS

- A new drain hose is supplied with your dishwasher. If drain hose is not long enough, use a new drain hose with a maximum length of 12 ft (3.7 m) that meets all current AHAM/ IAPMO test standards, is resistant to heat and detergent, and fits the 1" (2.5 cm) drain connector of the dishwasher.

NOTE: Do not connect multiple drain hoses together.

- Make sure to connect drain hose to waste tee or disposer inlet above drain trap in house plumbing and 20" (50.8 cm) minimum above the floor. It is recommended that the drain hose either be looped up and securely fastened to the underside of the counter or be connected to an air gap.
- Make sure to use an air gap if the drain hose is connected to house plumbing lower than 20" (50.8 cm) above subfloor or floor.



- If required, the air gap should be installed in accordance with the air gap installation instructions. When you are connecting the air gap, a rubber hose (not provided) will be needed to connect to the waste tee or disposer inlet.
- Use 1/2" (1.3 cm) minimum I.D. drain line fittings.

WATER SUPPLY REQUIREMENTS

- This dishwasher has a water heating feature and also requires a connection to a hot water supply line.
- A hot water line with 20 psi to 120 psi (138 kPa to 862 kPa) water pressure can be verified by a licensed plumber.
- 120°F (49°C) water at dishwasher.
- 3/8" (0.95 cm) O.D. copper tubing with compression fitting or flexible braided water supply line.

NOTE: 1/2" (1.3 cm) minimum plastic tubing is not recommended.

- A 90° elbow with 3/4" (0.95 cm) hose connection with rubber washer.
- Do not solder within 6" (15.2 cm) of the water inlet valve.
- If installed in new construction, make sure the house water supply lines have been flushed prior to connecting the dishwasher to remove any debris that may exist in the supply line.

NOTE: If replacing an existing dishwasher, it is recommended to install a new water line and drain hose (supplied) with the new dishwasher.

ELECTRICAL REQUIREMENTS

⚠ WARNING



Electrical Shock Hazard

Plug into a grounded 3 prong outlet.

Do not remove ground prong.

Do not use an adapter.

Do not use an extension cord.

Failure to follow these instructions can result in death, fire, or electrical shock.

Be sure that the electrical connection and wire size are adequate and in conformance with the National Electrical Code, ANSI/NFPA 70 - latest edition, and all local codes and ordinances.

A copy of the above code standards can be obtained from:

National Fire Protection Association
1 Batterymarch Park
Quincy, MA 02169-7471

You Must Have:

- 120 V, 60 Hz, AC only, 15 A or 20 A, fused electrical supply
- Copper wire only
- A maximum of 2 field wiring supply conductors (12 AWG largest size) plus 1 grounding conductor are permitted in the terminal box.

We Recommend:

- A time-delay fuse or circuit breaker.

Circuit Requirements:

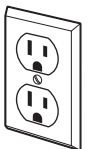
- The dishwasher may be installed on the same circuit as a garbage disposal providing that the branch circuit cannot exceed rated circuit load and must comply with all governing codes and regulations such as but not limited to National Electrical Code, ANSI/NFPA 70 - latest edition.
- No electrical connections other than the dishwasher power and ground connections can be made inside of the dishwasher terminal box.

If connecting dishwasher with a power supply cord:

- Use UL Listed power cord kit marked for use with dishwasher.



- Plug into a grounded 3 prong outlet. Outlet must meet all local codes and ordinances.



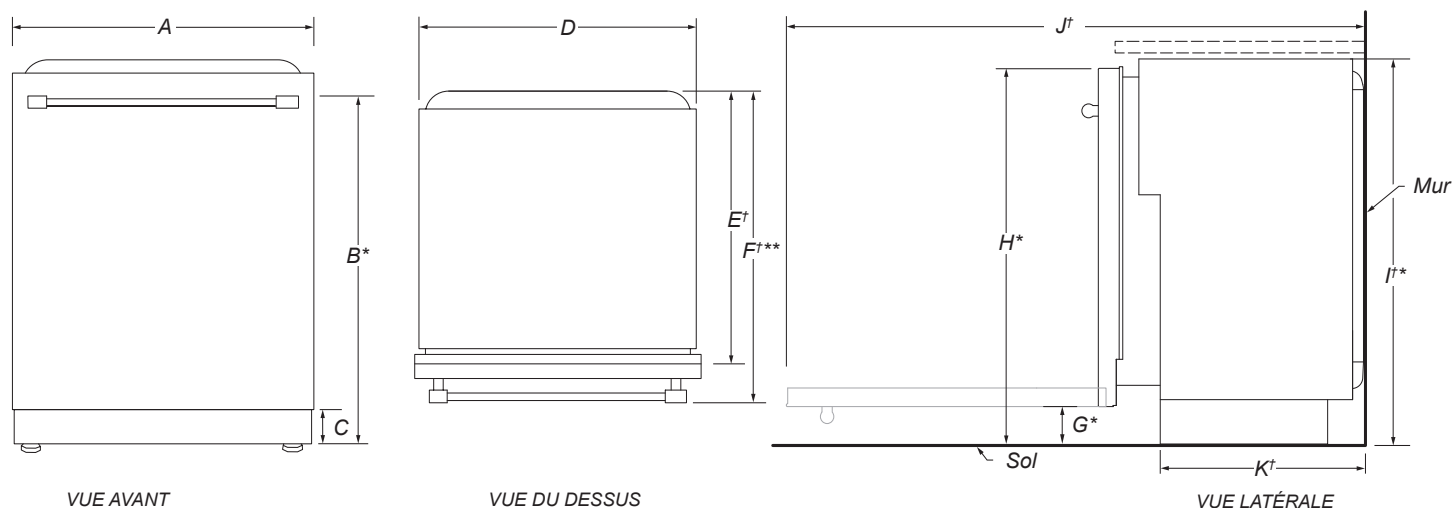
If connecting dishwasher with direct wiring:

- Use flexible, armored, or nonmetallic sheathed copper wire with grounding wire that meets the wiring requirements for your home and local codes and ordinances.

- Use a UL Listed/CSA Approved metallic strain relief.



DIMENSIONS DU PRODUIT (SUITE)



	DESCRIPTION	DIMENSIONS
A	Largeur de la porte	23 ½ po (59,7 cm)
B*	Hauteur jusqu'au sommet de la poignée	30 ¹³ / ₁₆ po (78,3 cm)
C	Hauteur de la plinthe réglable	3 ⁵ / ₁₆ po (8,4 cm) - min. 4 ¹¹ / ₁₆ po (11,8 cm) - max.
D	Largeur du lave-vaisselle encastré	22 ⁵ / ₈ po (57,4 cm)
E†	Profondeur sans porte	22 ⁵ / ₈ po (57,5 cm)
F†**	Profondeur avec poignée porte-serviettes	26 ⁷ / ₈ po (68,3 cm)
	Profondeur avec poignée en creux	24 ½ po (62,6 cm)
	Profondeur des modèles avec panneaux prêts à installer	24 po (61,0 cm)
G*	Hauteur au bas de la porte (min.)	3 ⁵ / ₁₆ po (8,4 cm)
H*	Hauteur jusqu'au haut de la porte (min.)	33 ⁷ / ₁₆ po (84,9 cm)
I*	Hauteur du lave-vaisselle encastré (min.)	33 ⁵ / ₈ po (85,4 cm)
J†	Profondeur avec porte entièrement ouverte (min.)	50 ³ / ₁₆ po (127,4 cm)
K†	Profondeur avec plinthe (min.)	20 ¹³ / ₁₆ po (52,9 cm)

†L'épaisseur de la couverture isolante ajoute jusqu'à 11/16 po (1,8 cm) mais peut s'aplatir jusqu'à 1/8 po (0,3 cm).

*Le lave-vaisselle peut être relevé de 1 ⁷/₁₆ po (3,7 cm) avec les pieds complètement déployés.

**Pour les modèles avec panneaux prêts à installer, la profondeur du lave-vaisselle est de 24 po (61,0 cm) – sans le panneau de porte personnalisé de 3/4 po (1,9 cm).

Electrolux



All Freezer

19 Cu. Ft. Single-Door Freezer

EI33AF80WS

Available Colors : Stainless Steel

Version : 10/21

Freezer

Air Filter	Yes
Door Bin Color	Smokey
Interior Lighting	LED
Shelf Material	Glass
Soft Freeze Zone	Yes
Number of Adjustable Door Bins	4
Total Number of Door Bins	4
Number of Adjustable Shelves	2
Number of Fixed Shelves	1
Number of Pull Out Shelves	1
Total Number of Shelves	4
Number of Drawers	2

Ice Maker

Ice Maker	Yes
Ice Maker Location	Fresh Food Section

Controls

Air Filter Indicator	Yes
Digital Display	Yes
Door Ajar Alarm	Yes
High Temp Alarm	Yes
Ice Maker On/Off	Yes
On/Off Display	Yes
Power Failure Alarm	Yes
Sabbath Mode	Yes
Vacation Mode	No

Exterior

Water Inlet Location	Right Bottom Rear
----------------------	-------------------

Dimensions and Volume

Height With Hinge	72 1/2"
Height Without Hinge	71 1/2"
Width of Cabinet	32 7/8"

Depth With Door	27"
Depth With Door 90° Open	58 1/4"

Electrical Specifications

Minimum Circuit Required	15 Amps
--------------------------	---------

General Specifications

Annual Energy	547 kWh
Condenser Type	Dynamic
Cooling System	Dual Evaporator
Leveling Legs	Yes
Prop 65 Label	Yes
Refrigerant Type	R-600A
Warranty - Labor	1 Year
Warranty - Parts	1 Year

Performance Certifications and Approvals

ENERGY STAR Certified	Yes
-----------------------	-----

Safety Certifications and Approvals

CSA Listed	Yes
------------	-----

High standards of quality at Electrolux Home Products, Inc. mean we are constantly working to improve our products. We reserve the right to change specifications or discontinue models without notice.

Electrolux Major Appliances, N.A.

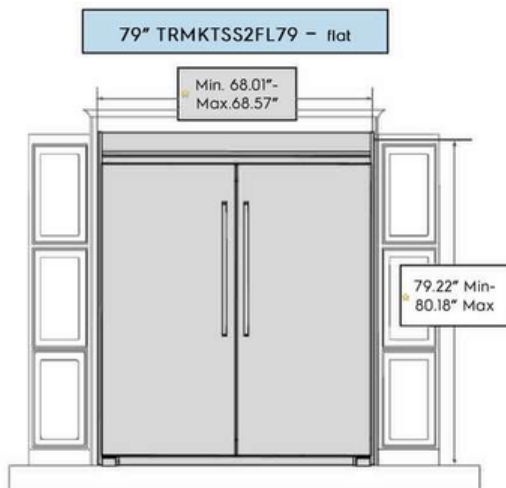
USA • 10200 David Taylor Drive • Charlotte, NC 28262 • Charlotte, NC 28262 • 1-877-4electrolux (1-877-435-3287) • electroluxappliances.com

CANADA • 5855 Terry Fox Way • Mississauga, ON L5V 3E4 • 1-800-265-8352 • electroluxappliances.ca

19 Cu. Ft. Single-Door Freezer

EI33AF80WS

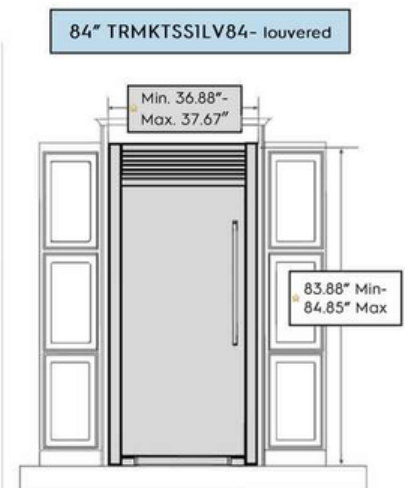
Version : 10/21



Recommended cutout size for kitchen cabinets:
Height: 79" +/- 0.06"
Width: 66.25" +/- 0.032"
Depth: 25.25" minimum



Recommended cutout size for kitchen cabinets:
Height: 83.75" +/- 0.06"
Width: 71.5" +/- 0.032"
Depth: 24.00" minimum



Recommended cutout size for kitchen cabinets:
Height: 83.75" +/- 0.06"
Width: 35.5" +/- 0.032"
Depth: 24.00" minimum

* Denotes trim kit dimensions only

** For replacement business, we can accommodate a 66" cutout width, but it will be a very tight fit.

High standards of quality at Electrolux Home Products, Inc. mean we are constantly working to improve our products. We reserve the right to change specifications or discontinue models without notice.

Electrolux Major Appliances, N.A.

USA • 10200 David Taylor Drive • Charlotte, NC 28262 • Charlotte, NC 28262 • 1-877-4electrolux (1-877-435-3287) • electroluxappliances.com

CANADA • 5855 Terry Fox Way • Mississauga, ON L5V 3E4 • 1-800-265-8352 • electroluxappliances.ca

PTB88 | PRO Collection

Cyclone[®]
Breathe Better



Undermount

Cyclone is excited to introduce its grandest undermount ever. Perfect for high-heat cooking. The PTB88 has an incredible 3-speed 880 CFM fan wrapped in an imposing 18" tall wall-mount style stainless steel body. Quickly rid your kitchen of smoke and grease. Comes with durable and dishwasher-friendly baffle filters, 3 bright LED lights and a 8" duct connection for optimal performance and convenient installation, all backed by the best warranty in the business.

Green Features



3 Speed
Push Button
Control Panel



Dishwasher Safe
Baffle Filters



Time-Delay
OFF Feature



Grease Cup



Long-Lasting
LED Lights



Grease Tray



Model	Colour	Ducting	Filters	Size	CFM
PTB8830	Stainless Steel	8"	Baffle	30"	880
PTB8836	Stainless Steel	8"	Baffle	36"	880
PTB8842	Stainless Steel	8"	Baffle	42"	880
PTB8848**	Stainless Steel	8"	Baffle	48"	880
PTB8830MB	Matte Black	8"	Baffle	30"	880
PTB8836MB	Matte Black	8"	Baffle	36"	880

**Special Order

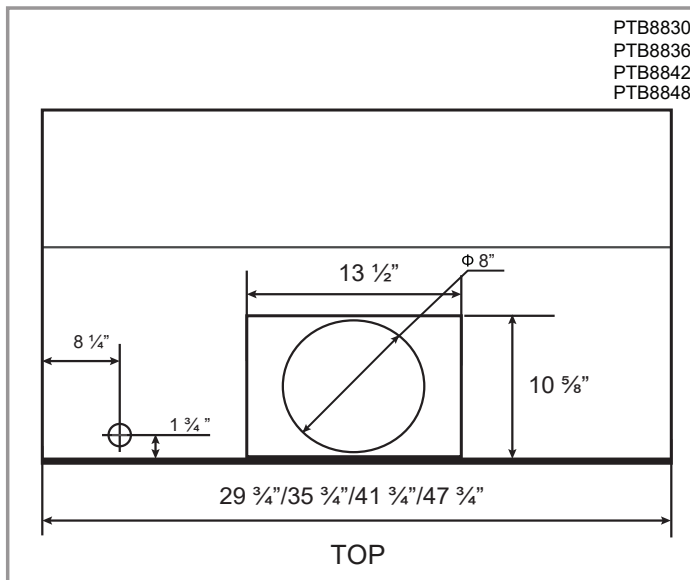
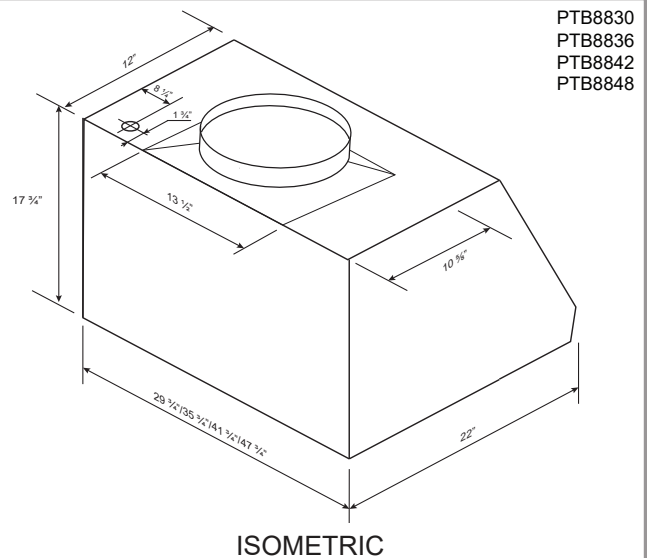
Cyclone Range Hoods Inc.

1361 Huntingwood Drive, Unit 16, Toronto, ON, M1S 3J1, Canada.

Toll Free: 1-888-293-5662 Tel: (416) 293-0933 Fax: (416) 293-4793 Website: www.CycloneRangeHoods.com

Features

- Undermount range hood
- 8" round duct adapter
- Non-stick aluminum fan blades
- 3 speed push button control
- 3 LED lights (3 x 1.4W, 4000K)
- Dishwasher-safe baffle filters with integrated handles
- 3 minutes time-delay OFF feature
- Plug-in connection



Options

- Chimney Flues:
TBD - short (8' ceilings)
TBD - extended (9' ceilings)
- Widths: 30", 36", 42", 48"
- Finishes: Stainless Steel, Matte Black

**Note: 42" and 48" in stainless steel only
48" is special order**

Specifications

- | | | |
|--------------------------------------|--------------------------------|--|
| ▪ Air Flow Volume: 880 CFM | ▪ Current: 2.5 Amps | ▪ Finishes: Stainless Steel, Matte Black |
| ▪ Electrical Connection: 120 V/60 Hz | ▪ Fan Speed: 1599 RPM | ▪ Ducting: 8" Round |
| ▪ Power Consumption: 300 Watts | ▪ Fan Type: Centrifugal Blower | ▪ Noise Level: Min. 2 Sones
Max. TBD |



Single-Door All Refrigerator and All Freezer Trim Kit Installation

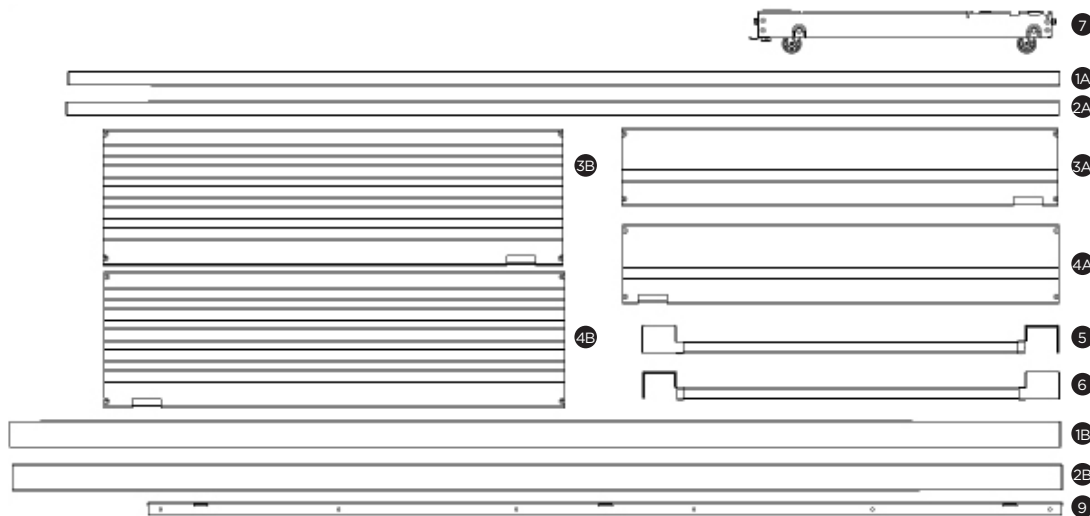
Product Line: All Refrigerator and All Freezer Models

Serial Number Range: All Serial Number Ranges

Single Trim Kit Components (79" & 84" Tall Cabinet Cutouts)

Brand		Kit #	Single Trim Kit #
Frigidaire Professional		TRMKTEZIFL79	A16405201
Item #	Part Number	Description	Qty
1A	A18684901	Side Trim, RH	1
2A	A18684902	Side Trim, LH	1
3A	A16766503	Top Trim, Flat RH	1
4A	A16766505	Top Trim, Flat LH	1
5	A18684505	Toe Kick, RH	1
6	A18684507	Toe Kick, LH	1
7	A17111301	Leveler Assembly	2
8	A20841303	Hardware Pack U19, Single	1

Brand		Kit #	Single Trim Kit #
Electrolux		TRMKTSSILV84	A19895901
Item #	Part Number	Description	Qty
1B	A19036503	Side Trim, RH	1
2B	A19036504	Side Trim, LH	1
3B	A19036402	Top Trim, Louver RH	1
4B	A19036403	Top Trim, Louver LH	1
5	A18684506	Toe Kick, RH	1
6	A18684508	Toe Kick, LH	1
7	A17111301	Leveler Assembly	2
8	A20841304	Hardware Pack U19, Single	1
9	A19036701	Side Trim Attachment	2

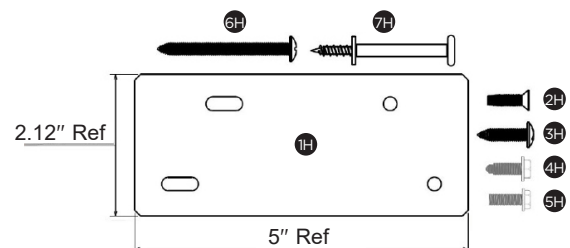
**Hardware Pack A20841303**

ITEM	PART NUMBER	DESCRIPTION	QTY
1H	A18695801	Tie-Bar, Top	1
2H	297142600	Screw, Flathead, #8-32	2
3H	050149	Screw, Round, #8-18	4
4H	A16955502	Bolt, M5 x 16	6
5H	A21188301	Bolt, 1/4"-20	2
6H, 7H	A20706101	Trim Base Screw	1

Hardware Pack A20841304

ITEM	PART NUMBER	DESCRIPTION	QTY
1H	A18695801	Tie-Bar, Top	1
2H	297142600	Screw, Flathead, #8-32	2
3H	050149	Screw, Round, #8-18	12
4H	A16955502	Bolt, M5 x 16	6
5H	A21188301	Bolt, 1/4"-20	2

NOTE: All Hardware Pack components mentioned throughout this instruction sheet will have an "H" after the item number.



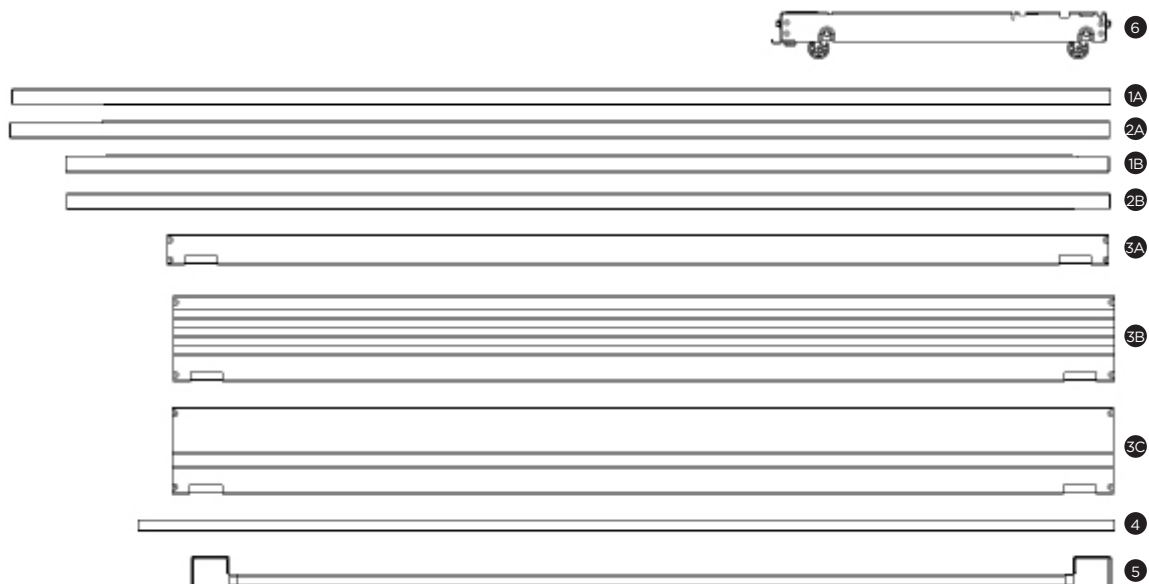
Dual Trim Kit Components (75" & 79" Tall Cabinet Cutouts)

Brand		Kit #	Dual Trim Kit #
Frigidaire		TRMKTEZ2FL75	A18643301
Item #	Part Number	Description	Qty
1B	A18685001	Side Trim, RH	1
2B	A18685002	Side Trim, LH	1
3A	A18694901	Top Trim, Collar	1
4	A18685101	Center Trim	1
5	A18684501	Toe Kick	1
6	A17111301	Leveler Assembly	4
7	A20841301	Hardware Pack U19, Single	1

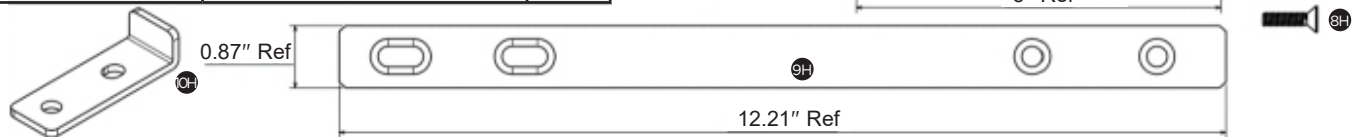
Brand		Kit #	Dual Trim Kit #
Frigidaire		TRMKTEZ2LV79	A16405401
Item #	Part Number	Description	Qty
1A	A18684901	Side Trim, RH	1
2A	A18684902	Side Trim, LH	1
3B	A18804301	Top Trim, Louver	1
4	A18685101	Center Trim	1
5	A18684501	Toe Kick	1
6	A17111301	Leveler Assembly	4
7	A20841301	Hardware Pack U19, Single	1

Brand		Kit #	Dual Trim Kit #
Frigidaire		TRMKTEZ2FL79	A16404901
Item #	Part Number	Description	Qty
1A	A18684901	Side Trim, RH	1
2A	A18684902	Side Trim, LH	1
3C	A16766501	Top Trim, Flat	1
4	A18685101	Center Trim	1
5	A18684501	Toe Kick	1
6	A17111301	Leveler Assembly	4
7	A20841301	Hardware Pack U19, Single	1

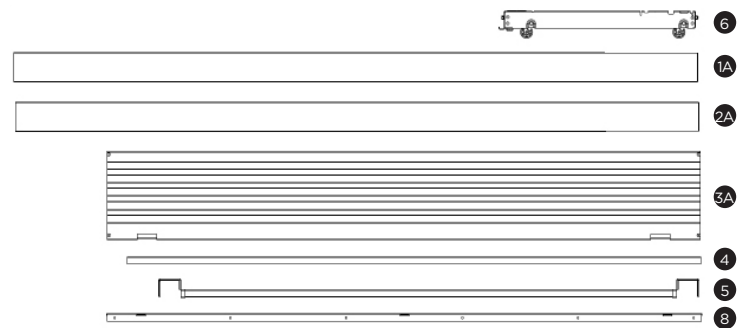
Brand		Kit #	Dual Trim Kit #
Electrolux		TRMKTSS2FL79	A16404902
Item #	Part Number	Description	Qty
1A	A18684903	Side Trim, RH	1
2A	A18684904	Side Trim, LH	1
3C	A16766502	Top Trim, Flat	1
4	A18685102	Center Trim	1
5	A18684502	Toe Kick	1
6	A17111301	Leveler Assembly	4
7	A20841301	Hardware Pack U19, Single	1



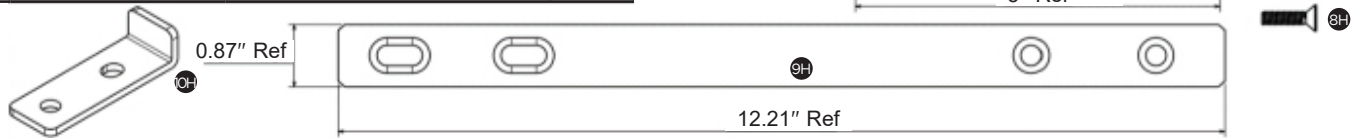
Hardware Pack A20841301			
ITEM	PART NUMBER	DESCRIPTION	QTY
1H	A18695801	Tie-Bar, Top	1
2H	297142600	Screw, Flathead, #8-32	2
3H	050149	Screw, Round, #8-18	4
4H	A16955502	Bolt, M5 x 16	6
5H	A21188301	Bolt, ¼"-20	2
6H, 7H	A20706101	Trim Base Screw	1
8H	A20632701	Screw, 10-24 x ¾	8
9H	A16770801	Tie Bar, Bottom	2
10H	A18685301	Center Trim Support	1

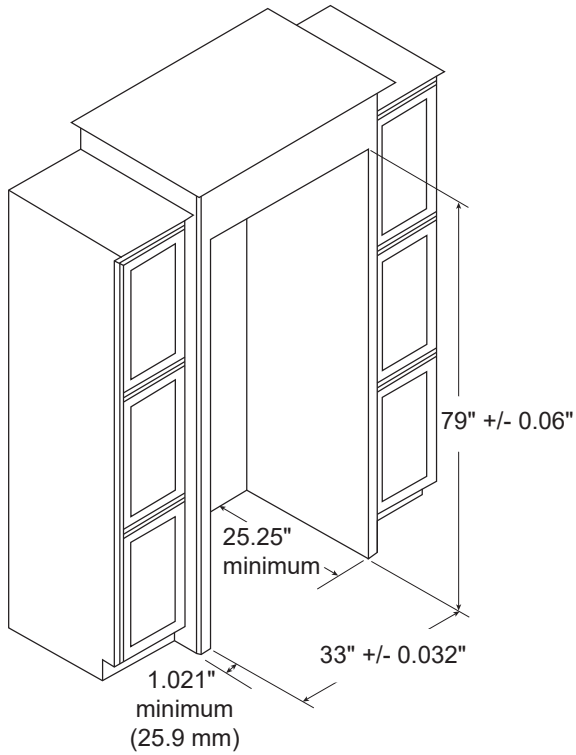
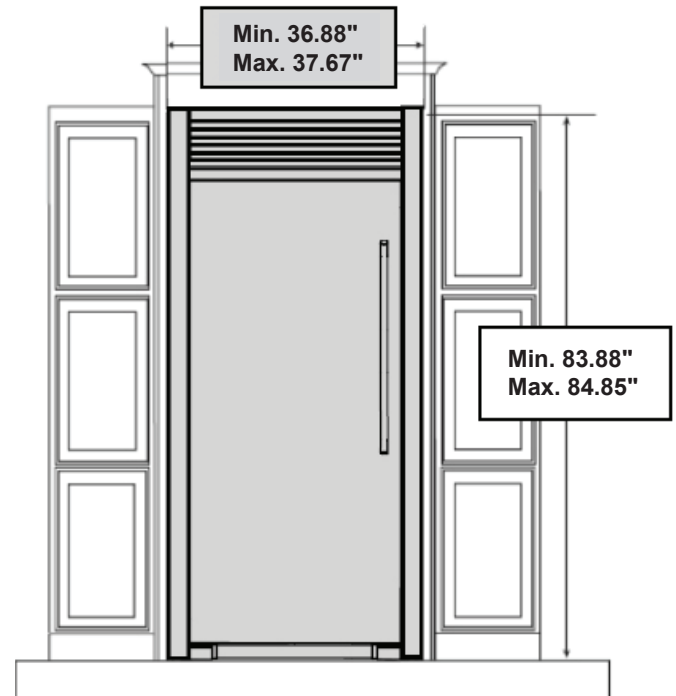
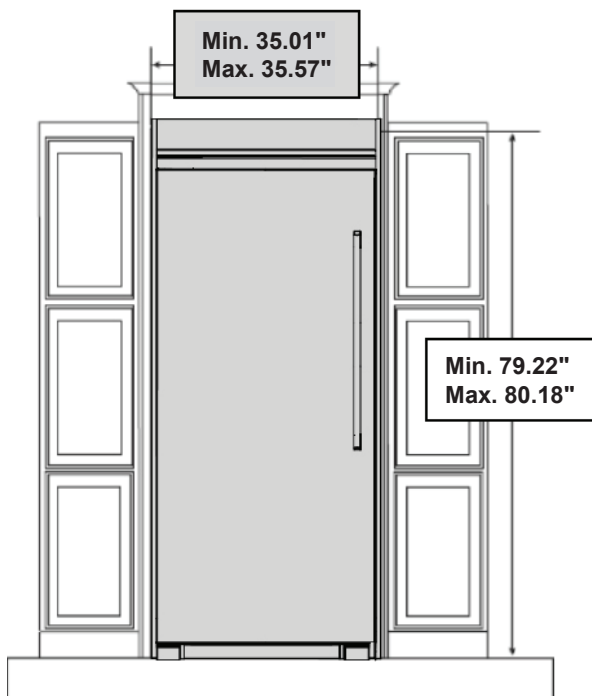
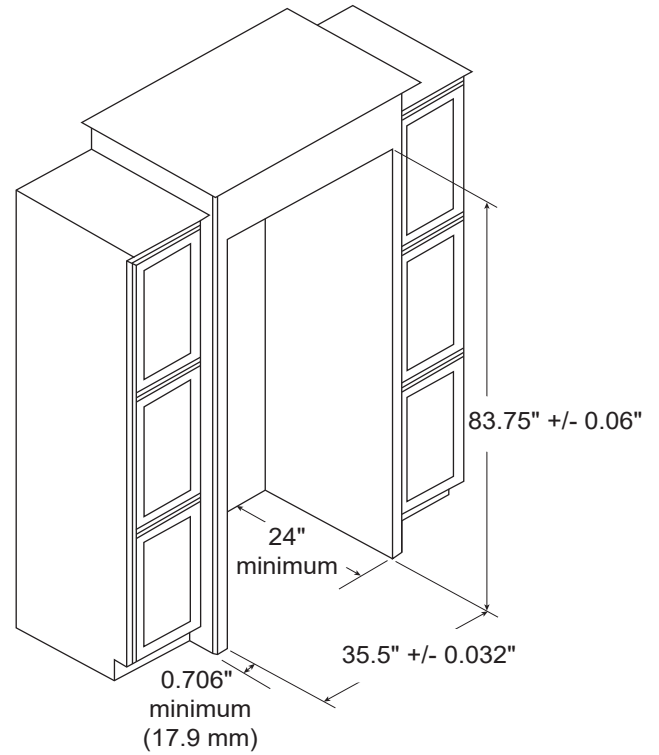

Dual Trim Kit Components (84" Tall Cabinet Cutouts)

Brand		Kit #	Dual Trim Kit #
Electrolux		TRMKTSS2LV84	A16405301
Item #	Part Number	Description	Qty
1A	A19036501	Side Trim, RH	1
2A	A19036502	Side Trim, LH	1
3A	A19036401	Top Trim, Louver	1
4	A18685102	Center Trim	1
5	A18684502	Toe Kick	1
6	A17111301	Leveler Assembly	4
7	A20841302	Hardware Pack U19, Double	1
8	A19036701	Side Trim Attachment	2



Hardware Pack A20841301			
ITEM	PART NUMBER	DESCRIPTION	QTY
1H	A18695801	Tie-Bar, Top	1
2H	297142600	Screw, Flathead, #8-32	2
3H	050149	Screw, Round, #8-18	12
4H	A16955502	Bolt, M5 x 16	14
5H	A21188301	Bolt, ¼-20	4
8H	A20632701	Screw, 10-24 x ¾	8
9H	A16770801	Tie Bar, Bottom	2
10H	A18685301	Center Trim Support	1



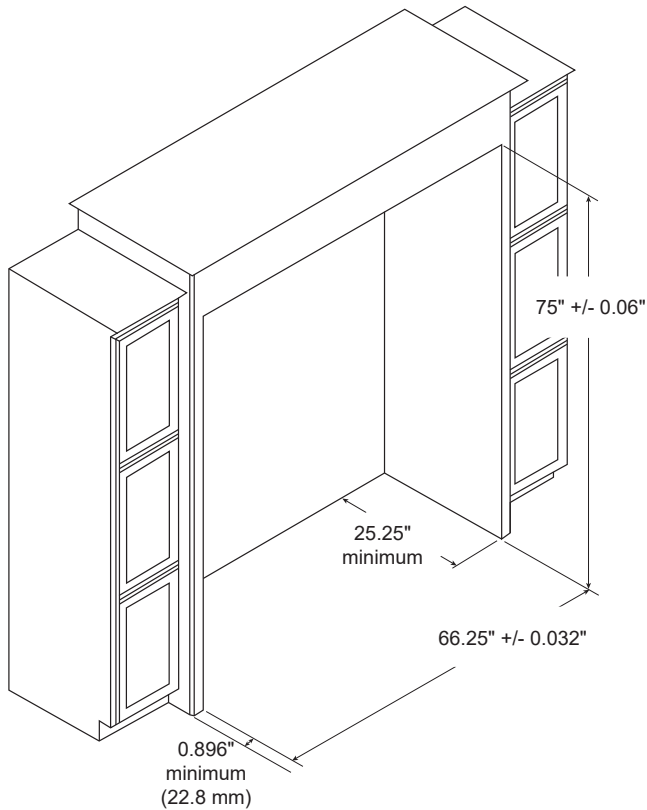
Single Trim Kits (79" & 84" Tall Cabinet Cutouts)
TRMKTEZ1FL79 (Frigidaire)

TRMKTSSILV84 (Electrolux)


Dual Trim Kits (75" & 79" Tall Cabinet Cutouts)

NOTE

To install a dual trim kit or a pairing kit, a partition cannot exist between the Freezer and the Refrigerator.

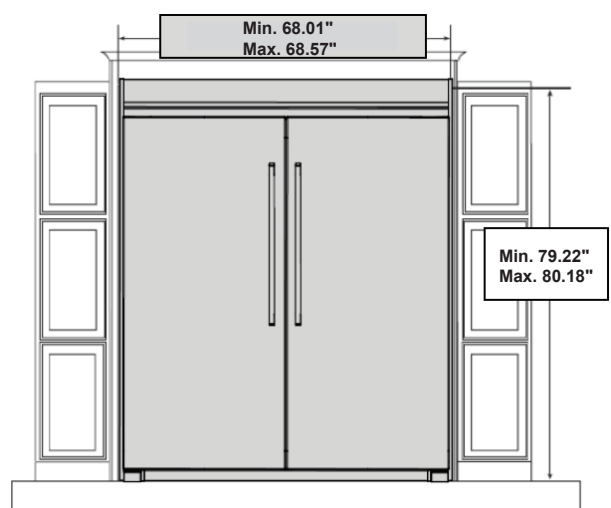
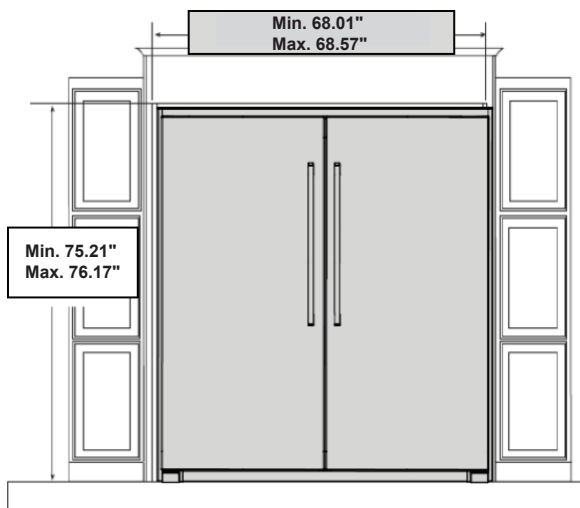
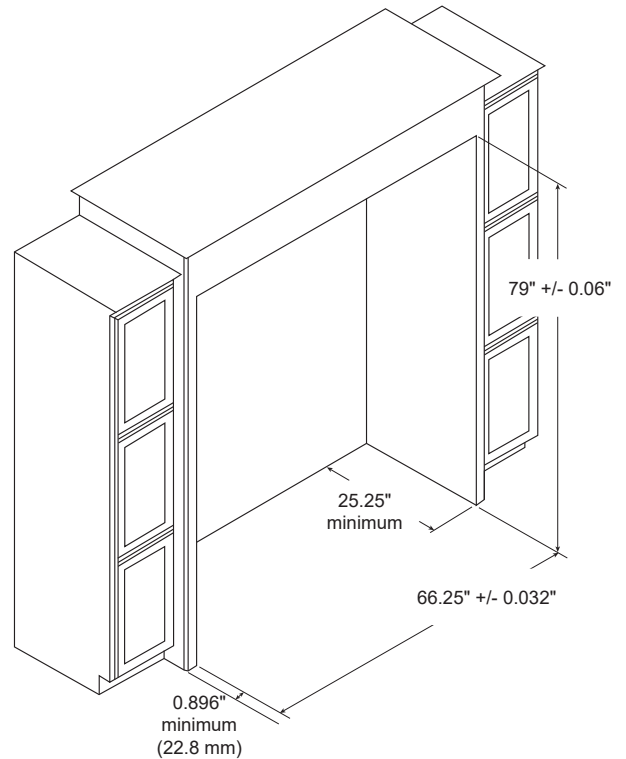
TRMKTEZ2FL75 (Frigidaire)

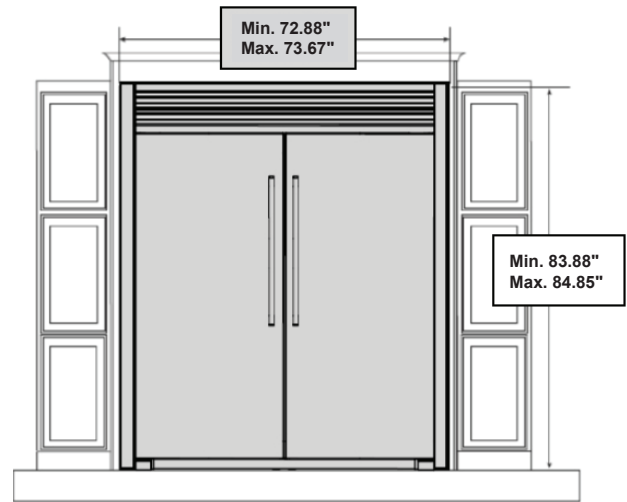
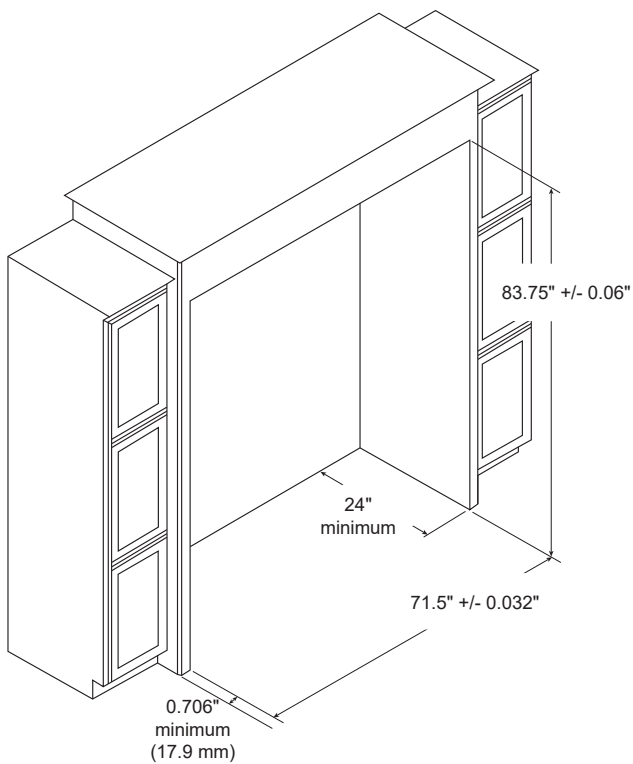


TRMKTEZ2FL79 (Frigidaire)

TRMKTSS2FL79 (Electrolux)

TRMKTEZ2LV79 (Frigidaire)



Dual Trim Kits (84" Tall Cabinet Cutouts)**TRMKTSS2LV84 (Electrolux)**

Safety: Always wear safety glasses when using power tools.

Tools Needed:

- Phillips™ Screwdriver
- Flathead Screwdriver
- Safety Glasses
- $\frac{3}{8}$ " & $\frac{5}{16}$ " Socket Wrench
- Power Drill and $\frac{5}{16}$ " Nut Driver Bit
- $\frac{3}{8}$ " Nut Driver
- Step Ladder
- Tape Measure
- Gloves

Before You Begin

- Be careful when unpacking components. Do not use sharp objects when removing packaging material. This may scratch the surface of trim components.
- Use extreme care when handling the metal trim pieces. Corners are very sharp and easily damaged if dropped.

Instructions for Dual Installation Trim Kits:

TRMKTEZ2FL75 (Frigidaire)
TRMKTEZ2LV79 (Frigidaire)
TRMKTEZ2FL79 (Frigidaire)
TRMKTSS2FL79 (Electrolux)
TRMKTSS2LV84 (Electrolux)

Leveling System Installation

1.
 - a. Lay refrigerator and freezer on their backs on packing material or a drop cloth to prevent damage.
 - b. Remove all 4 rear leg levelers from the 2 units by unscrewing counterclockwise (Fig. 1A).
 - c. Remove all 4 front leg levelers from the 2 units by unscrewing the outer peg and 2 bolts on each front leveler with a $\frac{5}{16}$ " nut driver. Remove the hinge cover if it is installed (Fig 1B).
2. Lay the parts out on a cleared area face down. Be sure to place a drop cloth over the floor to prevent scratching the trim kit and/or floor (Fig. 2).

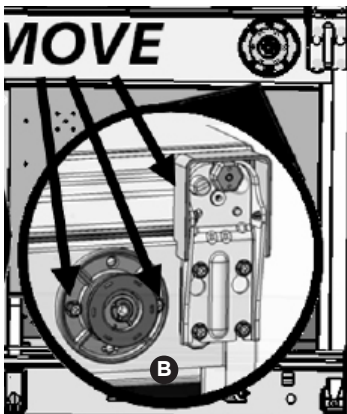
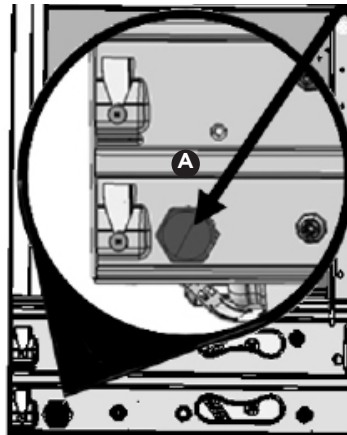
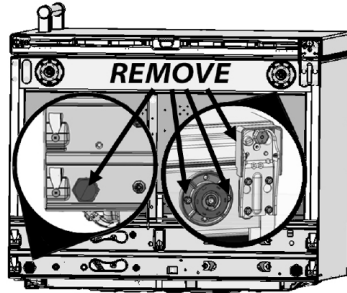


Fig. 1

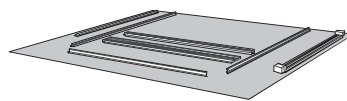


Fig. 2

3.
 - a. Fit the first Leveler Assembly onto a refrigerator/freezer (Fig. 3).

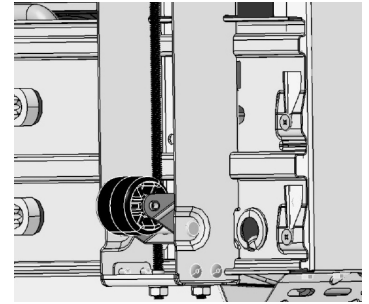


Fig. 3

- b. Using the 4H bolts from step 1, fasten the front of the Leveler Assembly to the refrigerator/freezer using a $\frac{5}{16}$ " nut driver (Fig. 4).

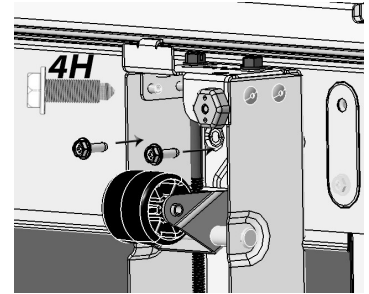


Fig. 4

If more fastening space is required, rotate the bolt labeled **F** clockwise (Fig. 5) using a flathead screwdriver or a $\frac{3}{8}$ " socket wrench.

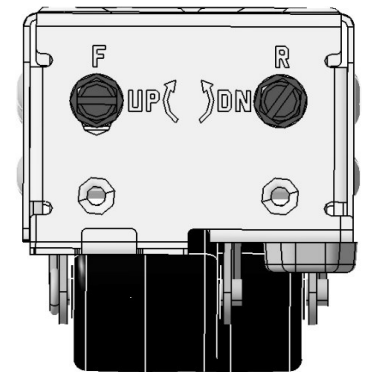


Fig. 5

- c. Using a 5H bolt and a power drill, fasten the bottom of the Leveler Assembly with a $\frac{3}{8}$ " hex drill bit in whichever hole overlaps the screw hole (Fig. 6).

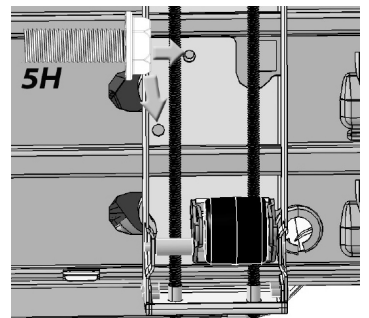


Fig. 6

- d. Attach remaining 3 Leveler Assemblies as described in the previous 3 steps using the remaining six 4H bolts and the remaining three 5H bolts. With the unit(s) still on their backs, adjust all leveling wheels to approximately the orientation in Fig. 7.

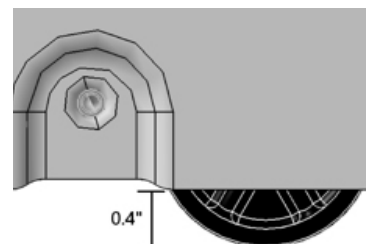


Fig. 7

Trim Kit Center Trim Support

4. With the refrigerator still on its back, use a $\frac{5}{16}$ " nut driver to remove two 4H bolts and fasten the 10H L-Bar (Fig. 8).

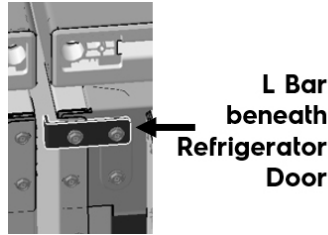


Fig. 8

5. Stand both units upright.


CAUTION

The cabinet is heavy. Two people are recommended to lift or move the cabinet.

Pairing Kit Installation

Before cleaning your appliance, turn off power to your appliance by unplugging the power cord from the electrical outlet. Wipe down both sides of the refrigerator and the freezer.


NOTE

Never use CHLORIDE to clean stainless steel. Clean stainless-steel front and handles with non-abrasive soapy water and a dishcloth. Rinse with clean water and a soft cloth. Wipe stubborn spots with an ammonia-soaked paper towel, and rinse. Use a non-abrasive stainless-steel cleaner, such as **Frigidaire ReadyClean™ Stainless Steel Cleaner** found on Frigidaire.com. Always follow the manufacturer's instruction.


NOTE

Always, clean, wipe and dry with the grain to prevent scratching. Wash the rest of the cabinet with warm water and mild liquid detergent. Rinse well and wipe dry with a clean soft cloth.

Note: Use gloves for the next step.

6. Peel off the paper backing from the first heater.
7. Adhere the first heater to the lower right side of the left-side unit (0.5 in. from the bottom and 0.5 in. from the back wall) so the harnesses come out at the top.

NOTE: Make sure you adhere the heater completely with no air pockets (Fig. 9A).

8. Peel off the paper backing from the second heater.
9. Adhere the second heater to the upper left side of the right-side unit (0.5 in. from the top and 0.5 in. from the back wall) so the harnesses come out at the bottom.

NOTE: Make sure you adhere the heater completely with no air pockets (Fig. 9B).

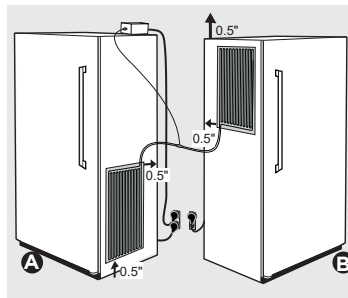
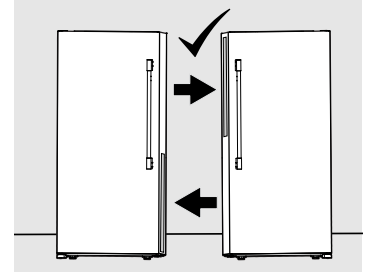


Fig. 9

NOTE: For the best results, please use the configurations of the heaters mentioned (Freezer-bottom right side and Refrigerator top left side).

Avoid:

- Both heaters on the Freezer
- Both heaters on the Refrigerator
- Both heaters on the top
- Both heaters on the bottom
- Both heaters in the center



10. Plug in the connector of the two **Heaters A** into the **Power Supply C** (Fig. 10).

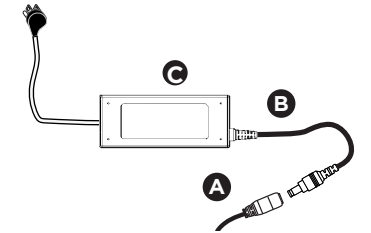


Fig. 10

NOTE: Confirm the power supply fits into the cutout when placed on top of the unit. Also confirm the power supply reaches the power outlet when placed on top of the unit (Fig. 11A).

11. Apply the 2 strips of double-sided tape to the power supply and adhere the power supply on top of the unit (Fig. 11B).

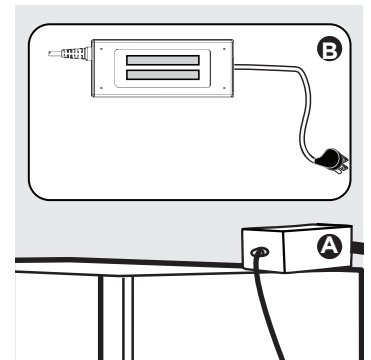


Fig. 11


IMPORTANT

Make sure there are two separate outlets for the freezer and the refrigerator.

12. If the power supply cannot be placed on top of the unit, adhere it vertically on the back wall of the unit and make sure the connection of the 3-prong connector to the power supply is facing down (Fig. 12).

NOTE: You cannot feel the heater temperature.

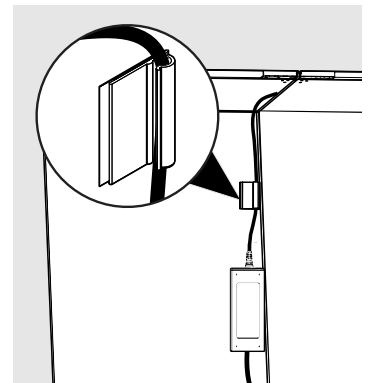


Fig. 12

13. Use the clips provided to hold the excess power cords to the back of the units such that all wires are away from the floor (Fig. 13).

NOTE: Make sure the harnesses and cables are cleared off the floor before the units are pushed back in place. This will prevent any damage to the wires.

NOTE: The location of clips shown is an example.

14. Plug the power supply into the main outlet before pushing the units into the final position.

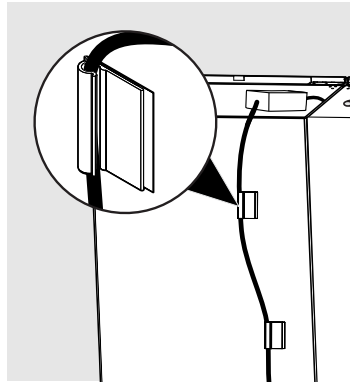


Fig. 13

Trim Kit Tie Bar Installation

15. Having the refrigerator/freezer standing side by side $\frac{1}{2}$ " apart, fasten a 9H bracket to the front of the Levelers (Fig. 14), keeping the left-side 8H screws loose.

NOTE: One side of the brackets is slotted for fine adjustments in step 18c.

16. Attach the other 9H bracket to the rear levelers (Fig. 15), keeping the right screws loose.

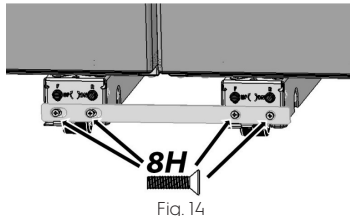


Fig. 14

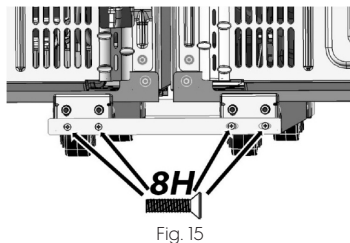


Fig. 15

17. Attach the 1H top tie bar (Fig. 16), keeping the 2 left 4H bolts loose.

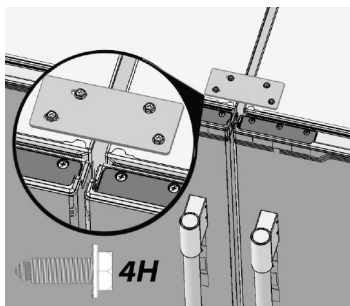


Fig. 16

18. a. Open the doors and place the middle trim in between the 2 units.
b. Adjust the proximity of the units as needed to centralize the middle trim. Start by fastening the screws on top 1H bracket in order to evenly space the Center Trim (Fig. 17).

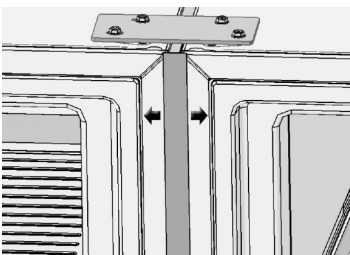


Fig. 17

- c. Fasten the four 8H screws (Fig. 14 and 15) through 2 front and back 9H brackets. You may need several adjustments for the center trim to be consistently flush and centered to the units.

NOTE: Before continuing, ensure doors close without interference and remain parallel. Adjusting the height of the wheels can help remedy door alignment issues. Refer to **INSTALLATION** in the Use & Care Manual to adjust the door height.

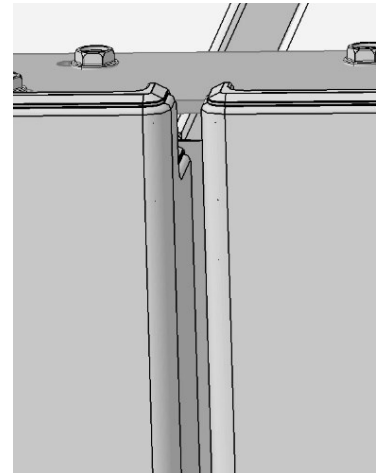
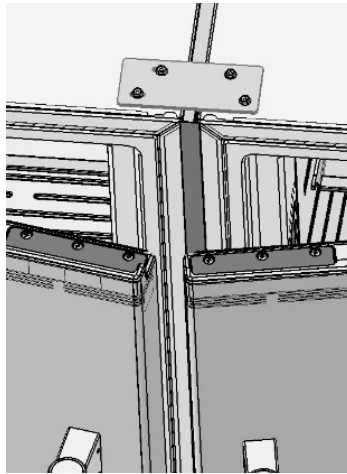


Fig. 18

NOTE

Some cabinet substrates may require pre-drilling holes using a $\frac{1}{8}$ " (3mm) diameter drill bit.

Electrolux TRMKTSS2LV84 Side Trim Attachment Setup (some models)

19. Using eight 3H screws and a power drill, attach the two Side Trim Attachment brackets to the front left and right cabinet cut-out edges with the brackets touching the floor (Fig. 19). Ensure the rectangular slots extend over the cabinet edge.

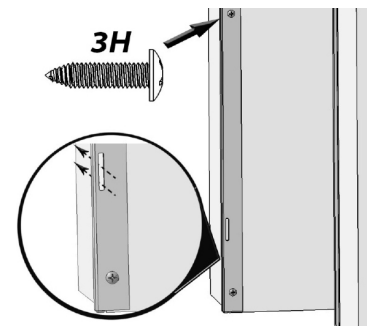


Fig. 19

Side Trim Attachment Setup For:

TRMKTEZ2FL75 (Frigidaire)

TRMKTEZ2LV79 (Frigidaire)

TRMKTEZ2FL79 (Frigidaire)

TRMKTSS2FL79 (Electrolux)

20. Depending on which long screw you received (6H or 7H), screw a long screw into the lower left (Fig. 20A) of the front cabinet, close to the location shown in Fig. 20B.
21. Repeat step 20 for the right side of the cabinet using the other 6H/7H screw.

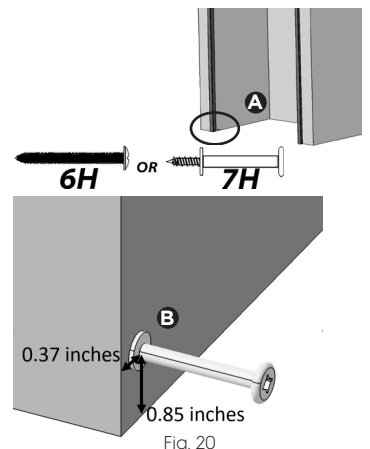


Fig. 20

Power and Water Line Connection

Note: Refer to the Use & Care Manual for power requirements and water supply hookup before proceeding. Find **Service Kit TTFLTRICEKIT** at electroluxappliances.com for connecting the water line and filtering ice.

Top Trim Attachment

NOTE

You will need a step ladder to install top trim components.

22. a. Remove the front outer hinge screws, common on both sides of the dual installation, as well as the two 4H screws that fasten the 1H Tie Bar (Fig. 21).
- b. Roll the dual installation into the cabinet, roughly $\frac{3}{4}$ of the way in, ensuring the product is centered in the cabinet cutout.
- c. Install the top trim by fastening four 4H screws along the base of the trim with a $\frac{5}{16}$ " socket wrench (Fig. 21).
23. a. Slide the dual installation into place, and make sure it is center inside the cabinets.
- b. Drill $\frac{1}{8}$ " pilot holes and fasten two 3H screws on the right side of the Top Trim (one screw per side for Collared top trim) with a Phillips screwdriver to the cabinets (Fig. 22).
- c. Repeat for the left side.

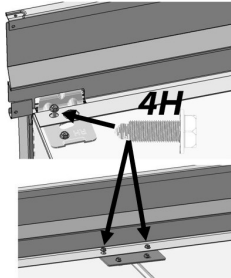


Fig. 21

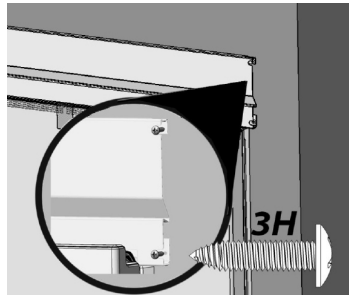


Fig. 22

- b. Fasten 2H screws to the top trim (Fig. 25) and repeat for the right hand side.

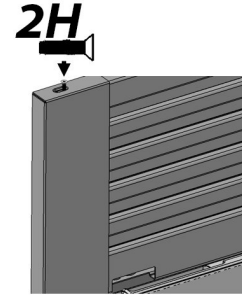


Fig. 25

26. a. Carefully place the Toe Kick over the 4 Leveler Assembly Slots. The first Leveler Assembly slot is circled in Fig. 26, and the fourth Leveler Assembly slot is circled in Fig. 27.
- b. Adjust the Toe kick until the magnets are engaged to the Leveler Assembly bolts and the Toe Kick is resting vertically in place.

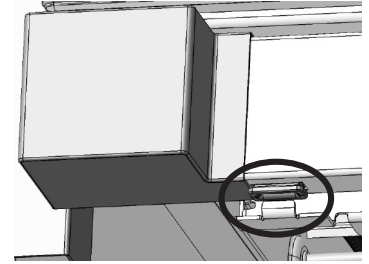


Fig. 26

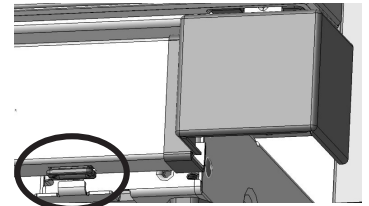


Fig. 27

Side Trim Installation For:

TRMKTEZ2FL75 (Frigidaire)

TRMKTEZ2LV79 (Frigidaire)

TRMKTEZ2FL79 (Frigidaire)

TRMKTSS2FL79 (Electrolux)

24. a. Place side trims in position by dropping them over the placement screw as seen in Fig. 21 and fitting over the top trim (Fig. 23).

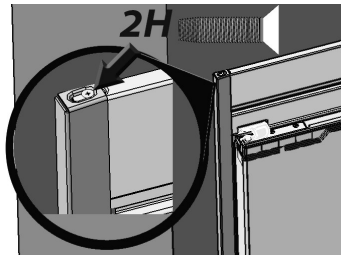


Fig. 23

Electrolux TRMKTSS2LV84 Side Trim Installation

25. a. Slide the left Side Trim into place by carefully guiding the Side Trim Attachment slots. Fig. 24 shows an inside view.

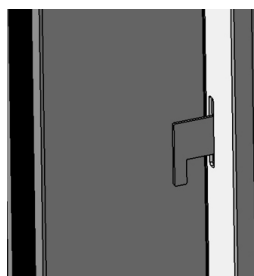


Fig. 24

Instructions for Single Installation Trim Kits:

TRMKTEZ1FL79 (Frigidaire)

TRMKTSSILV84 (Electrolux)

Leveling System Installation

1.
 - a. Lay the unit on its back on packing material or a drop cloth to prevent damage.
 - b. Remove both rear leg levelers by unscrewing counterclockwise (Fig. 1A).
 - c. Remove both front leg levelers by unscrewing the outer peg and 2 bolts on each front leveler with a $\frac{5}{16}$ " nut driver. Remove the hinge cover if it is installed (Fig 1B).
2. Lay the parts out on a cleared area face down. Be sure to place a drop cloth over the floor to prevent scratching the trim kit and/or floor (Fig. 2).

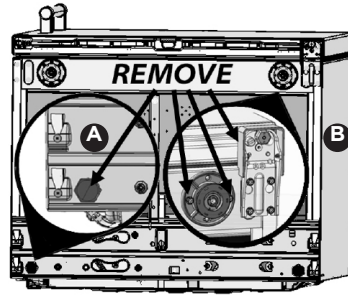


Fig. 1

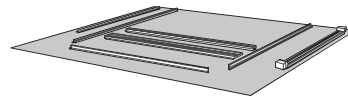


Fig. 2

3.
 - a. Fit the first Leveler Assembly onto a refrigerator/freezer (Fig. 3).

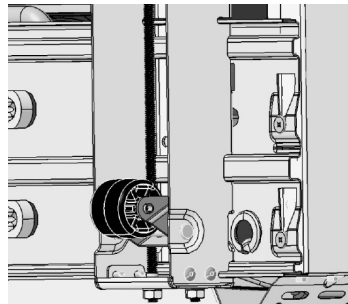


Fig. 3

- b. Using the 4H bolts from step 1, fasten the front of the Leveler Assembly to the refrigerator/freezer using a $\frac{5}{16}$ " nut driver (Fig. 4). If more fastening space is required, rotate the bolt labeled **F** clockwise (Fig. 5) using a flathead screwdriver or a $\frac{3}{8}$ " socket wrench.

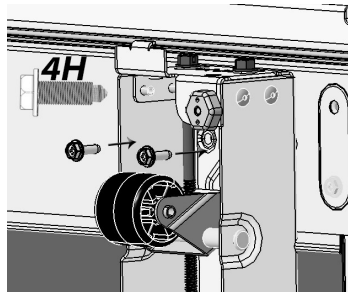


Fig. 4

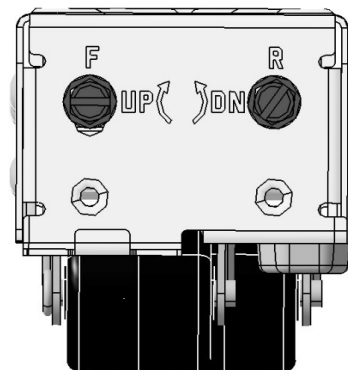


Fig. 5

- c. Using a 5H bolt and a power drill, fasten the bottom of the Leveler Assembly with a $\frac{3}{8}$ " hex drill bit in whichever hole overlaps the screw hole (Fig. 6).

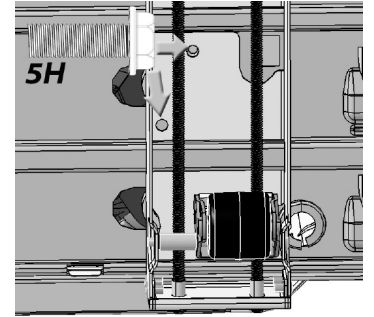


Fig. 6

- d. Attach the remaining Leveler Assembly as described in the previous 3 steps. With the unit still on its back, adjust all leveling wheels to approximately the orientation in Fig. 7.

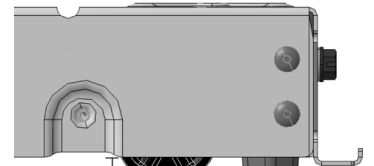


Fig. 7

Leveling the Unit

4.
 - a. Tilt the unit upright.
 - b. Place the unit into the cabinet space, or as close to the final position as possible (do not hook up power or water yet). This step is important to accurately level the unit prior to further installs.
 - c. Use a flat head screw driver or a $\frac{3}{8}$ " socket wrench to adjust the front bolts of the Leveler Assemblies (Fig. 8). Raise or lower the front and back wheels as needed until the unit rests properly in the cabinet space.
 - d. Once the Leveler Assemblies have been checked, roll out the unit in front of the cabinetry for accessibility.

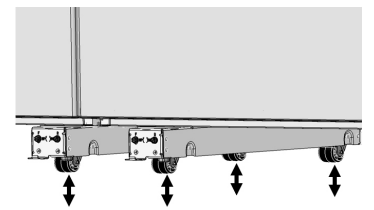


Fig. 8

NOTE

Some cabinet substrates may require pre-drilling holes using a $\frac{1}{8}$ " (3 mm) diameter drill bit.

Electrolux TRMKTSSILV84 Side Trim Attachment Setup

5. Using eight 3H screws and a power drill, attach the 2 Side Trim Attachment brackets to the front left and right cabinet cutout edges with the brackets touching the floor (Fig. 9). Ensure the rectangular slots extend over the cabinet edge.

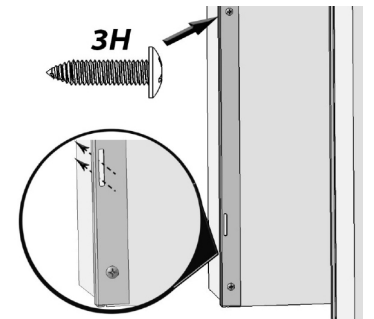
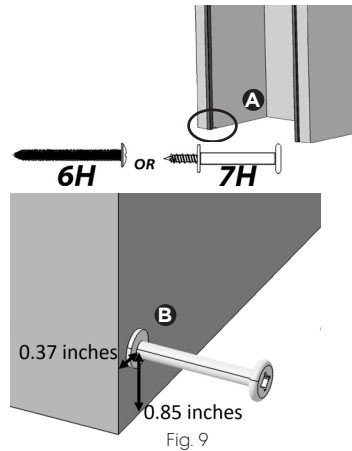


Fig. 8

Frigidaire TRMKTEZIFL79 Side Trim Attachment Setup

6. Depending on which long screw you received (6H or 7H) screw a long screw in the lower left area (Fig. 9A) of the front cabinet space, approximately in the location described in Fig. 9B.
7. Repeat step 6 for the right side of the cabinet using the other 6H/7H screw.

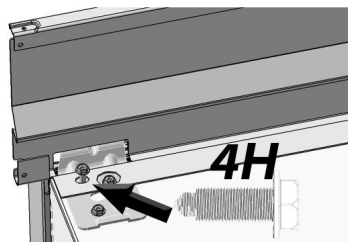
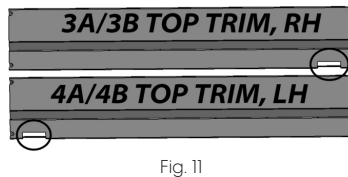
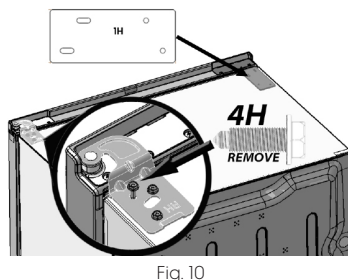

Power and Water Line Connection

Note: Refer to the Use & Care Manual for power requirements and water supply hookup before proceeding. Find **Service Kit TTFLTRICEKIT** at ElectroluxAppliances.com for connecting the water line and filtering ice.

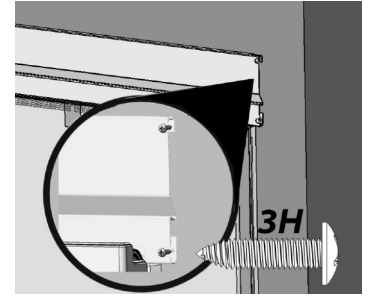
Top Trim Attachment
NOTE

You will need a step ladder to install top trim components.

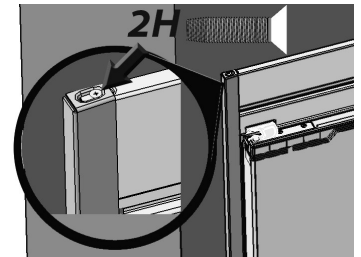
8. a. Remove the front outer screw from the top hinge (Fig. 10) using a $\frac{5}{16}$ " socket driver or wrench and save for later. Locate bracket 1H and place it on the top of the unit to be used on Step 14.
- b. Roll the unit into the cabinet roughly $\frac{3}{4}$ of the way in, ensuring the product is centered in the cabinet cutout.
- c. Choose the top trim according to which side the door hinge is on (Fig. 11). You do not need the other Top Trim for the installation.
- d. Install the Top Trim by fastening two 4H screws along the base of the trim with a $\frac{5}{16}$ " socket wrench (Fig. 12). Screw through the 1H bracket in step 8a to properly level the Top Trim.



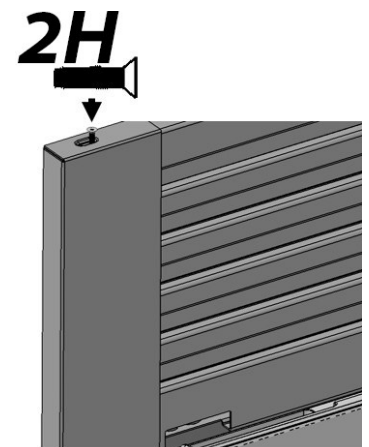
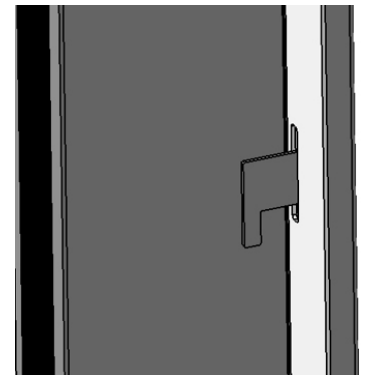
9. a. Slide the unit into place, and ensure the dual installation is centered.
- b. Drill $\frac{1}{8}$ " pilot holes and fasten two 3H screws on the right side of the Top Trim with a Phillips screwdriver to cabinets (Fig. 13).
- c. Repeat for the left side.


Frigidaire TRMKTEZIFL79 Side Trim Installation

10. a. Place the Side Trims in position by dropping them over the placement screw as seen in Fig. 9 and fitting them over the Top Trim (Fig. 14).
- b. Fasten a 2H screw to each side of the Top Trim (Fig. 14).


Electrolux TRMKTSSILV84 Side Trim Installation

11. a. Slide the left Side Trim into place by carefully guiding the Side Trim hooks through the Side Trim Attachment slots. Fig. 15 shows an inside view.
- b. Fasten 2H screws to the Top Trim (Fig. 16) and repeat for the right hand side.



12. a. Choose which Toe Kick to place below the unit based on which side the door hinge is on (Fig. 17). You do not need the other Toe Kick.
- b. Carefully place the Tow Kick over the 2 Leveler Assembly Slots. The first Leveler Assembly slot is circled in Fig. 18, and the second Leveler Assembly slot is circled in Fig. 19.
- c. Adjust the Toe Kick until the magnets are engaged to the Leveler Assembly bolts and the Toe Kick is resting vertically in place.

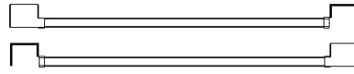


Fig. 17

Note: Refer to the Use & Care Manual to adjust the door height if needed.

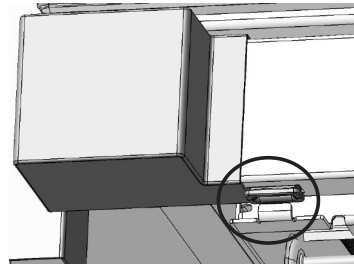


Fig. 18

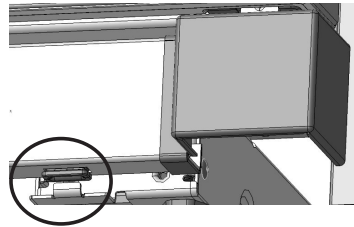


Fig. 19

LG LAUNDRY

WM8900HBA

5.2 cu.ft. Front Load Washer with TurboWash™ and Built-In Intelligence

5.2 cu. ft. Mega Capacity

TurboWash™ Technology

AIDD™ Fabric Sensor/ Smart Pairing™

AAFA Certified LG washer

ThinQ® Technology with Proactive Customer Care

ColdWash™ Technology

Direct Drive Motor 10-Year Limited Warranty

ENERGY STAR® Certified

NeveRust™ Stainless Steel Tub

AVAILABLE COLORS



BLACK STEEL



LG ThinQ®

Enjoy new ways to control your home with LG smart appliances

- Use the ThinQ® app to start the laundry while you're out
- Get alerts when the cycle is finished
- Proactive Customer Care offers preventative maintenance tips



WTR3 - LOT 67



SUMMARY	
Capacity (cu.ft.)	5.2 cu. ft.
Matching Electric Dryer	DLEX8900B
Matching Gas Dryer	DLGX8901B
Color	Black Steel
APPEARANCE	
Hard Buttons	Yes
Touch Buttons	Yes
Dial-A-Cycle™	Yes
ENERGY	
ENERGY STAR® Certified	Yes
CEE Tier	Tier 3 (Advanced Tier)
IMEF	3.1
IWF	2.9
WASHER PROGRAMS	
No. of Programs	12
	Normal, Perm. Press, Heavy Duty, Delicate, Towels, Speed Wash, Sportswear, Bedding, Tub Clean, Bright Whites™, Allergiene™, Downloaded
WASHER OPTIONS	
No. of Options	13
	TurboWash®, Steam, Pre-wash, Remote Start, Delay Wash, Wi-Fi, Add Item, Extra Rinse, Control Lock, Drum Light, ColdWash, Spin Only, Signal
WASH DETAILS	
No. of Wash/Rinse Temps	5
Wash/Rinse Temps	Extra Hot, Hot, Warm, Cold, Tap Cold
No. of Spin Speeds	5
Spin Speeds	Extra High, High, Medium, Low, No Spin
Max RPM	1300
Water Levels	Load Sensing
No. of Soil Levels	5

FABRIC CARE FEATURES	
TurboWash® 2.0 Technology	Yes
Steam Technology	Yes
Allergiene™ Cycle	Yes
ColdWash™ Option	Yes
Drum Light	Yes
AIDD™	Yes
CONVENIENCE FEATURES	
TrueBalance™ Anti-Vibration System	Yes
4 Tray Dispenser	Prewash, Main Wash (with liquid detergent cup), Bleach, Fabric Softener
LoDecibel™ Quiet Operation	Yes
End of Cycle Signal	Yes
LoadSense	Yes
Child Lock*	Yes
Auto Suds Removal	Yes
Leveling Legs	4 Adjustable Legs
Easy Loading TiLTub™	Yes
SMART FEATURES	
LG ThinQ® Technology	Yes
Proactive Customer Care (PCC)	Yes
SmartDiagnosis™	Yes
WiFi Connectivity	Yes
Remote Start and Cycle Monitor	Yes
Energy Monitoring	Yes (WiFi)
MOTOR	
Motor Type	Inverter Direct Drive Motor
Axis	Horizontal
MATERIALS AND FINISHES	
NeveRust™ Stainless Steel Drum	Yes
Door/Rim	Glass/Chrome

CERTIFICATION	
AAFA	Yes
POWER SOURCE	
Ratings	UL Listed
Electrical Requirements	120V, 10 Amps
Type	Electric
OPTIONS/ACCESSORIES	
Pedestal	WDP5B
Pedestal (WxHxD)	29 x 13 5/8" x 29 1/2" (44 3/4" D with door open)
LG Sidekick™ Pedestal Washer	WD200CB
LG Sidekick™ Pedestal Washer (WxHxD)	29 x 14 1/8 x 30 7/8 (52 3/4" D with door open)
Stacking Kit KSTK2	KSTK2
Hose Included	No
DIMENSIONS	
Product (WxHxD)	29" x 40 3/4" x 33"
Depth with Door Open	57 1/2"
Carton (WxHxD)	31 3/8" x 44 3/4" x 33 3/4"
Weight (Product/Carton)	225 / 251.5 lbs.
LIMITED WARRANTY	
Parts and Labor	1 Year
Direct Drive Motor	10 Years
Drum	3 Years
UPC CODES	
WM8900HBA Washer (Black Steel)	195174024829
DLEX8900B Dryer (Black Steel Electric)	195174024836
DLGX8901B Dryer (Black Steel Gas)	195174024843
WDP5B Pedestal (Black Steel)	048231026468
KSTK2 Stacking Kit (Chrome)	048231013017
WD200CB Sidekick™ Pedestal Washer (Black Steel)	048231026482

WM8900HBA

5.2 cu.ft. MEGA Capacity Front Load Washer

QUICK INSTALL & CLEARANCES

For full installation directions/clearances please refer to the corresponding User Manual and Installation Guide.

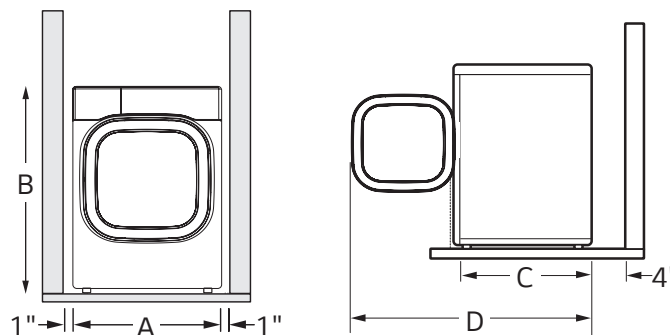
DIMENSIONS

A Width	29"
B Height	40 3/4"
C Depth	33"
D Depth with Door Open	57 1/2"
Carton (WxHxD)	31 3/8" x 44 3/4" x 33 3/4"

ENERGY / POWER SOURCE

ENERGY STAR® Certified	Yes
CEE Tier	Tier 3 (Advanced Tier)
IMEF	3.1
IWF	2.9
Ratings	UL Listed
Electrical Requirements	120V, 10 Amps
Type	Electric

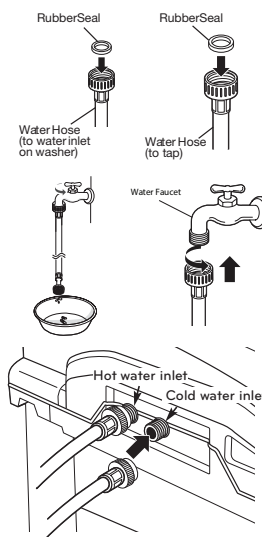
DIMENSIONS AND CLEARANCES



- Install the washing machine on a solid floor that is strong and rigid enough to support the weight of the washing machine, even when fully loaded, without flexing or bouncing. If the floor has too much flex, you may need to reinforce it to make it more rigid. If the floor is not solid, it may cause severe vibration and noise.

CONNECTING THE WATER LINES

- LG recommends the use of LG hoses. Any leaking, property damage, or damage to the washing machine caused by an improper installation or by the use of non-LG hoses is not covered under the terms of the LG warranty and is the sole responsibility of the customer and/or an installer.
- Water supply pressure must be between 20 psi and 120 psi (138-827 kPa). If the water supply pressure is more than 120 psi, a pressure reducing valve must be installed.
- Inspect the threaded fitting on each hose and make sure there is a rubber seal in place in both ends of each hose.
- Connect the water supply hoses to the HOT and COLD water faucets tightly by hand and then tighten another 2/3 turn with pliers.
- Always run a gallon or two of water through each inlet hose to flush dirt, scale and other debris out of the water lines. Doing so will help prevent future problems with clogged filter screens, and will also allow you to verify which water line is hot and which is cold.
- Attach the hot water line to the hot water inlet on the back of the washer. Attach the cold water line to the cold water inlet on the back of the washer. Tighten the fittings securely. Turn ON both faucets all the way and check for leaks at both ends of the hoses.

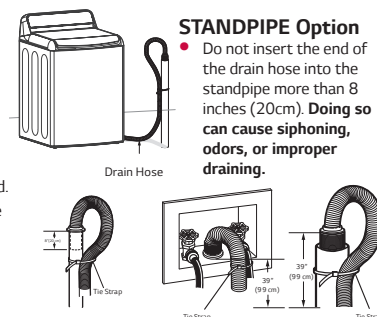


ELECTRICAL REQUIREMENTS

- The washer should be plugged into a 120-VAC, 60-Hz grounded 3-prong outlet. Plug in the washer. Improper connection of the equipment-grounding conductor can result in risk of electric shock. Check with a qualified electrician or service technician if you are in doubt as to whether the appliance is properly grounded. Do not modify the plug provided with the appliance. If it does not fit the outlet, have a proper outlet installed by a qualified electrician. Failure to follow these warnings can cause serious injury, fire, electrical shock, or death.
- The power outlet must be within 60 inches (1.5 m) of either side of the washer.
- The appliance and outlet must be positioned so that the plug is easily accessible.
- Do not overload the outlet with more than one appliance.
- The outlet must be grounded in accordance with current wiring codes and regulations.
- Time-delay fuse or circuit breaker is recommended.
- It is the personal responsibility and obligation of the product owner to have a proper outlet installed by a qualified electrician.

CONNECTING THE DRAIN HOSE

- The drain hose should always be properly secured. Failure to properly secure the drain hose can result in flooding and property damage.
- The drain must be installed in accordance with any applicable local codes and regulations.
- Make sure that the drain hose is not stretched, pinched, crushed, or kinked.
- Normal height of the end of the hose should be approximately 35"-47" (0.9-1.2 m) from the floor.
- Do not install the end of the drain hose lower than 29 in. (73.7 cm) or higher than 96 in. (243.8 cm) above the bottom of the washer or more than 60 in. (152.4 cm) away from the washer.
- Never create an airtight seal between the hose and the drain with tape or other means. If no air gap is present, water can be siphoned out of the tub resulting in poor wash/rinse performance or clothing damage.



STANDPIPE Option

- Do not insert the end of the drain hose into the standpipe more than 8 inches (20cm). Doing so can cause siphoning, odors, or improper draining.

LAUNDRY TUB Option

- Do not use this drain hose with a floor drain. The end of the drain hose must be at least 29 inches above the floor for proper draining to occur.



19 Cu. Ft. Single-Door Refrigerator

All Refrigerator

Available Products: EI33AR80WS

Available Colors: Stainless Steel

Version: 07/23

WTR3 - LOT 67

Product Specifications

Refrigerator

Air Filter	Yes
Crisper Color	Smokey
Door Bin Color	Smokey
Humidity Controls	Automatic
Interior Lighting	LED
Shelf Material	Glass
Water Filter	Yes
Total Number of Door Bins	4
Number of Adjustable Shelves	2
Number of Fixed Shelves	1
Number of Pull Out Shelves	1
Number of Crispers	1

Dimensions and Volume

Height With Hinge	72 1/2"
Height Without Hinge	71 1/2"
Width of Cabinet	32 7/8"
Depth With Door	27"
Depth With Door 90° Open	58 1/4"
Total Capacity	18.9 Cu. Ft.

General Specifications

Annual Energy	331 kWh
Condenser Type	Dynamic
Cooling System	Single Evaporator
Leveling Legs	Yes
Prop 65 Label	Yes
Refrigerant Type	R-600A
Warranty - Labor	2 Years
Warranty - Parts	2 Years

Safety Certifications and Approvals

CSA Listed	Yes
------------	-----

Controls

Air Filter Indicator	Yes
Digital Display	Yes
Door Ajar Alarm	Yes
Power Failure Alarm	Yes
Sabbath Mode	Yes
Vacation Mode	No

Electrical Specifications

Minimum Circuit Required	15 Amps
--------------------------	---------

Performance Certifications and Approvals

ENERGY STAR Certified	Yes
-----------------------	-----

Installation Diagram



NQ70CG600D

30" Microwave Combination Wall Oven

SAMSUNG



WTR3 - LOT 67

Available Colors

- Stainless Steel
NQ70CG600DSR
- Matte Black
NQ70CG600DMT

Design

- Drop-Down Door Design
- Transitional Design

Features

- Steam Cook (Oven)
- Air Sous Vide (Oven)
- Air Fry, Tray Included (Oven)
- Convection Vegetable (Oven)
- Wi-Fi Connectivity
- Dual Convection
- Digital Touch Controls
- 7-Inch LCD Display
- Steam Clean & Self-Clean (Oven)
- Halogen Lights
- 2 Heavy-Duty Racks
- Gliding Rack
- Broil Element
- 6 Rack Positions (Oven)

Convenience

- Sabbath Mode (Oven)
- Delay Start (Oven)
- Child Safety Lock
- Warming Mode
- Kitchen Timer

Specifications

- Microwave Capacity: 1.9 cu. ft.**
- Sensor Cook
 - Speed Convection
 - Speed Broil
 - Air Fry Auto Cook
- Oven Capacity: 5.1 cu. ft.**
- Hidden Bake Element
 - Convection Bake: 175°F–550°F
 - Convection Roast: 175°F–550°F
 - Convection Vegetables: 350°F–450°F
 - Bake: 175°F–550°F
 - Broil: Low-High
 - Air Sous Vide: 100°F–205°F
 - Air Fry: 350°F–500°F
 - Steam Proof
 - Dehydrate

Dimensions

Product Dimensions & Weight (WxHxD)
Outside (Max) Wall Oven Dimensions:
29³/₄" x 43¹/₄" x 24³/₈"
Wall Oven Cut-Out Dimensions:
28⁵/₈" x 42¹/₄" x 23¹/₂"
Weight: 270.1 lbs

Shipping Dimensions & Weight (WxHxD)
Dimensions: 33³/₄" x 48¹/₄" x 29⁷/₁₆"
Weight: 299.8 lbs

Warranty

One (1) Year All Parts and Labor

UPC

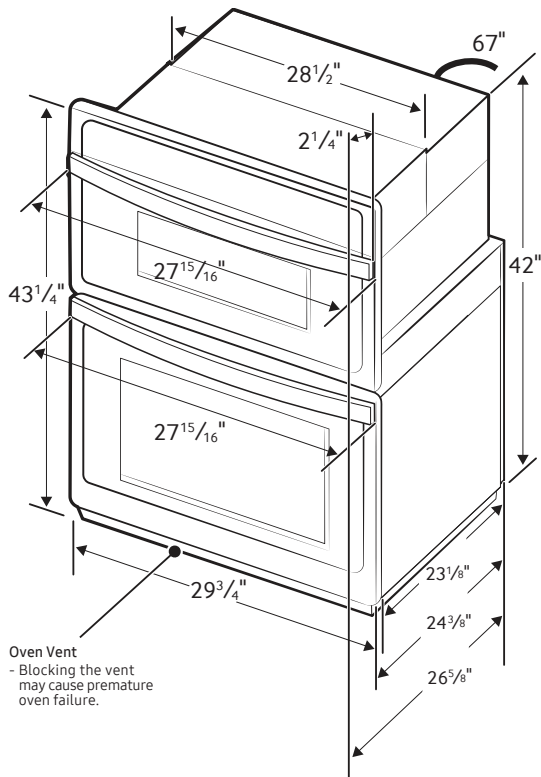
Microwave Combination Wall Oven	Model #	UPC Code
Stainless Steel	NQ70CG600DSR	887276757605
Matte Black	NQ70CG600DMT	887276757599

NQ70CG600D

SAMSUNG

30" Microwave Combination Wall Oven

Product Dimensions



Electrical Requirements

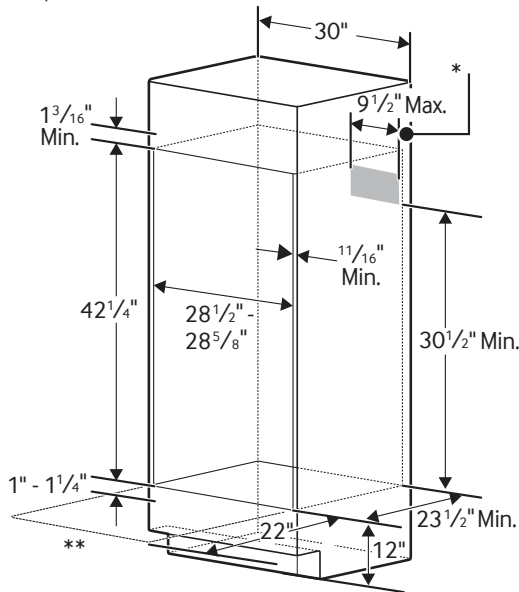
KW RATING	
240V	8.2 kW
208V	6.2 kW
BREAKER SIZE	
240V	40 Amps
208V	30 Amps

Cabinet Dimensions

Combination Oven Installed in Cabinet

* Junction Box.

** Allow a minimum of 22" for clearance to adjacent corners, drawers, walls, etc. when door is open.



Benchmark®, Induction Cooktop, 36", Black NITP660UC

**FlexInduction® cooktop allows you to place
your cookware wherever you want on the
flexible cooking zone.**

Design

- 5 Induction Cooking Zones
- Also Available with Stainless Steel Frame: NITP660SUC
- PreciseSelect® Premium - Direct Cooking Level Selection (17 Settings)

Efficiency

- SpeedBoost® - Adds Even More Power to Speed Up the Cooking Process
- ShortBoost - Ideal for Cooking With Oil, or Pans With Thin Walls or Non-Stick Coating
- PotSense™ - Automatically Adjusts Cooking Element to the Size of the Pan Bottom

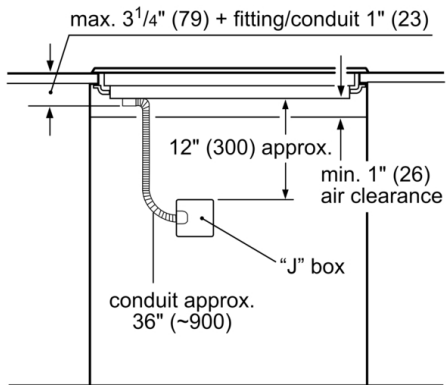
Convenience

- With Home Connect™, the Bosch Cooktop and Matching Hood Operate Perfectly in Sync for an Easier Life
- Use the Kitchen Timer to Measure Cooking Time or as a Reminder
- Count Up Timer – Stopwatch Function That Enables Close Monitoring of the Progress of Each Dish
- AutoChef® Frying Sensor With 5 Automatic Programs
- Keep Warm Function - Ideal for Melting Chocolate or Butter
- ReStart - Quickly Reinstates Previous Settings

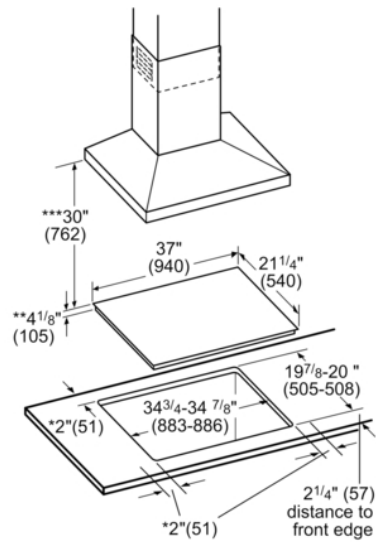
Safety

- ChildLock - Prevents the Cooktop from Being Accidentally Switched on. Locks Temperature Settings if in Use.
- Digital 2-Stage Residual Heat Indicator for Each Cooking Zone
- Wipe Protection - Quickly Pauses Settings to Clean as You Go

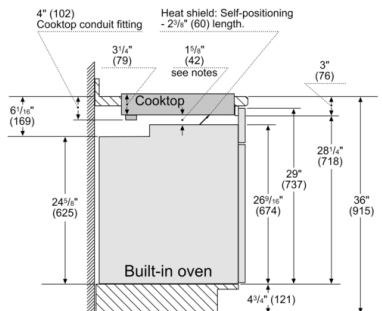
Benchmark®, Induction Cooktop, 36", Black NITP660UC



Measurements in inches (mm)



30\" Built-in oven – under induction cooktop



Notes:

Dimensions based on standard countertop height (36\" with 4 1/4\" toe kick including base plate).

The built-in oven can be installed below the induction cooktop as long as there is a minimum 1\" (26) clearance between the bottom of the cooktop and the top of the oven.

measurements in inches (mm)

* Minimum distance from the hob cut-out
Measurements in inches (mm)

