

24" Recessed Handle Dishwasher

300 Series – Stainless Steel SHEM63W55N



BOSCH
Invented for life



SHEM63W55N
Stainless Steel

Also available in:

White SHEM63W52N
Black SHEM63W56N

The 3rd rack provides the perfect space for silverware and large utensils while its V shape leaves room below for taller items.

Features & Benefits

44 dBA: dishwasher runs quietly so your kitchen conversations aren't interrupted.

With PrecisionWash®, intelligent sensors and precision spray arms target every item of every load, so dishes come out sparkling clean every time.

The AquaStop® leak protection system contains leaks through a precisely engineered system. If a leak occurs, the system contains it by shutting down operation and pumping out water. So you have the ultimate peace of mind whether you are away or at home.

General Properties

Number of wash cycles	5
Number of options	4
dBA	44
Drying system	PureDry
Third rack	Standard 3rd Rack
Rack adjustability	Rackmatic®
Tub material	Stainless Steel
Control type	Buttons
Concealed water heating element	Yes
Leak protection system	24/7 AquaStop®
NSF®-certified* sanitize option	Yes
Water softener	No
Five-level wash	Yes
ChildLock	Yes
Special features	Extra Dry Option

Efficiency

Water usage per cycle	3.5
Energy efficiency class	Tier 1
ENERGY STAR® qualified	Yes
Total annual energy consumption (kWh)	269
Total annual water consumption (g)	623.5

Capacity

Number of place settings	16
--------------------------	----

Technical Details

Watts (W)	1440 W
Current (A)	12 Amps
Volts (V)	120 V
Frequency (Hz)	60 Hz
Power cord full length	67"
Power cord install length from edge of unit when facing the door (in)**	Left – 45" Right – 56"
Minimum water pressure (lb/sin)	14
Length outlet hose (in)	79"

Dimensions & Weight

Overall appliance dimensions (HxWxD) (in)	33 7/8" x 23 9/16" x 23 3/4"
Required cutout size (HxWxD) (in)	33 7/8" x 23 5/8" x 24"
Adjustable feet	Yes
Net weight (lbs)	91 lbs

Accessories—Optional

Junction Box	SMZPCJB1UC
Bosch Dishwasher Water Supply Hose	SMZSH002UC
Drain Hose Extension Kit	SGZ1010UC
Dishwasher Accessory Kit	SMZ5000
Anti-Tarnish Silverware Cassette	SMZ5002UC
Edge Protector + Power Cord Clip Install Kit	SMZEPCC1UC



*Certification to NSF/ANSI Standard 184 for residential dishwashers

**September 2020 running production change to remove adhesive routing clips for power cord. These clips and the edge protector are now included in the dishwasher accessory kit # SMZEPCC1UC.

Accessories: To purchase Bosch accessories, cleaners & parts please visit www.bosch-home.com/us/store or call 1-800-944-2904 (Mon to Fri 5 am to 6 pm PST, Sat 6 am to 3 pm PST).

Notes: All height, width and depth dimensions are shown in inches. BSH reserves the absolute and unrestricted right to change product materials and specifications, at any time, without notice. Consult the product's installation instructions for final dimensional data and other details prior to making cutout.

Warranties: Please see Use & Care manual or Bosch website for statement of limited warranty.

For more information on our entire line of products, go to www.bosch-home.com/us or call 1-800-944-2904

© BSH Home Appliances Corporation. All rights reserved. Bosch is a registered trademark of Robert Bosch GmbH.

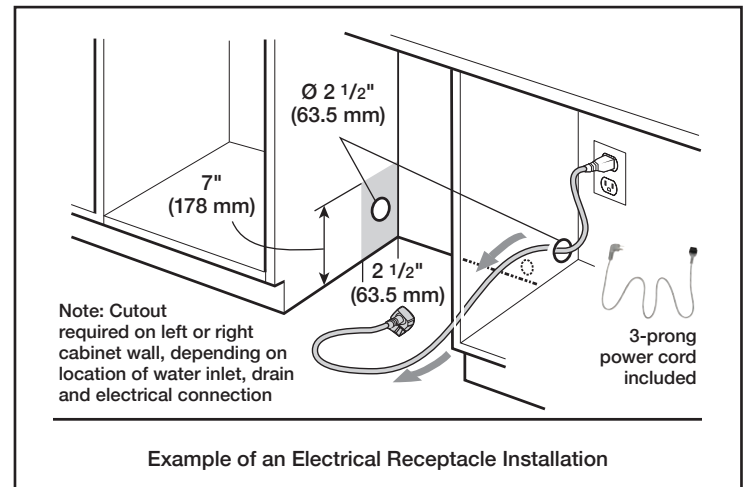
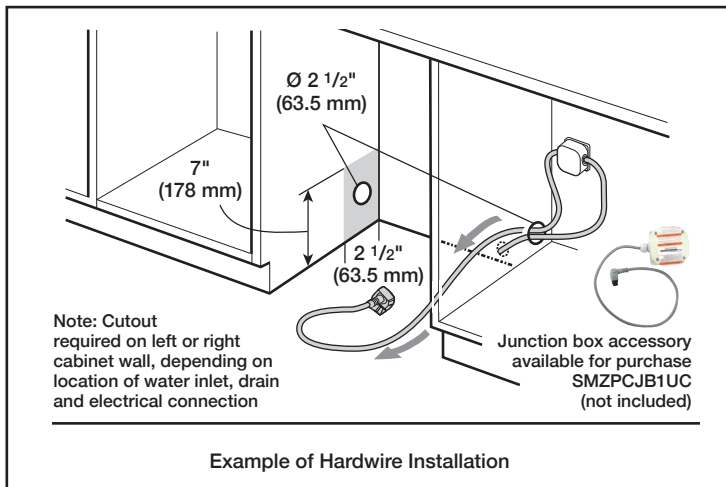
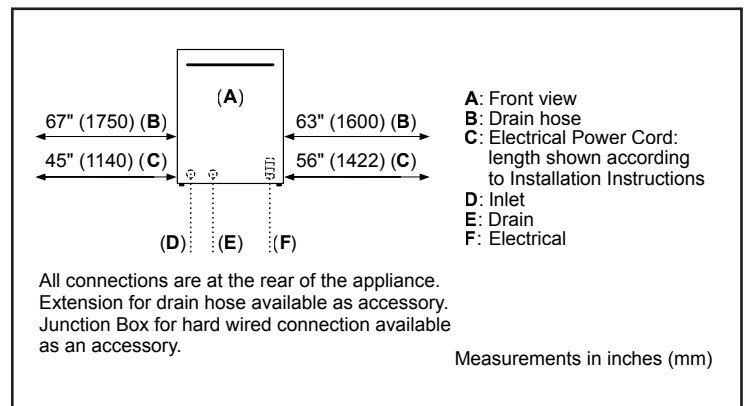
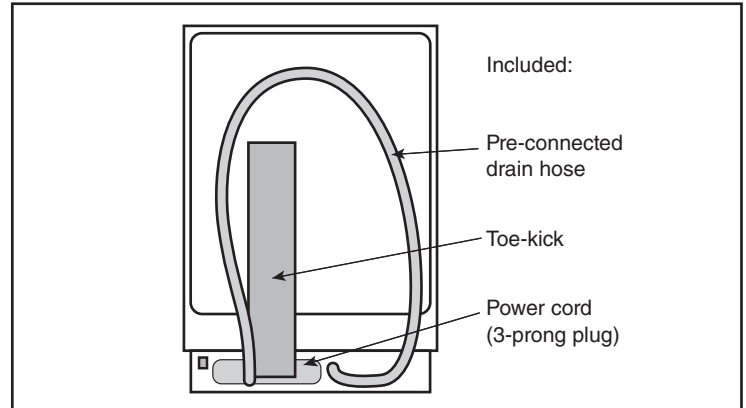
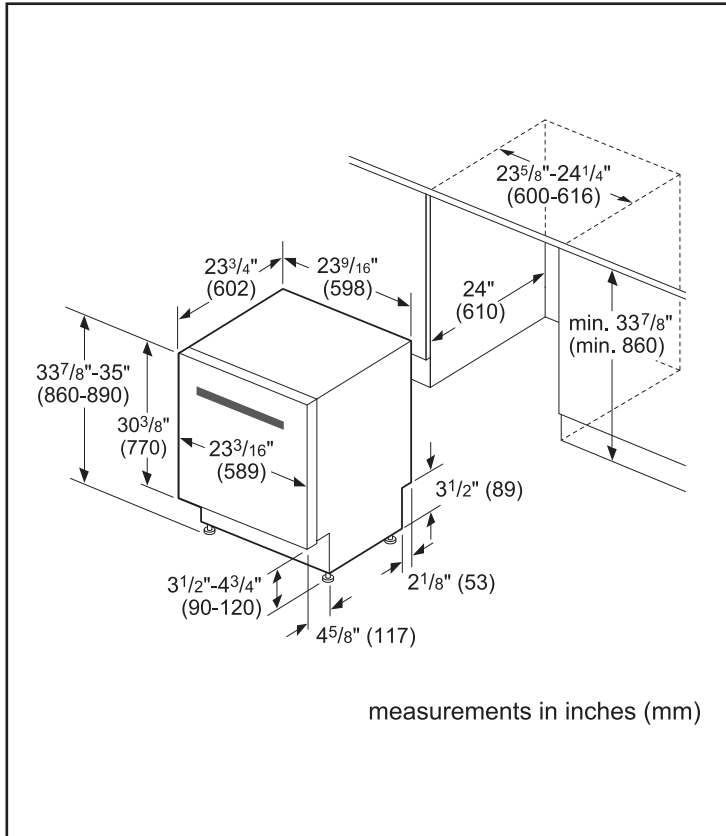
24" Recessed Handle Dishwasher

300 Series – Stainless Steel SHEM63W55N



BOSCH
Invented for life

Installation Details



Accessories: To purchase Bosch accessories, cleaners & parts please visit www.bosch-home.com/us/store or call 1-800-944-2904 (Mon to Fri 5 am to 6 pm PST, Sat 6 am to 3 pm PST).

Notes: All height, width and depth dimensions are shown in inches. BSH reserves the absolute and unrestricted right to change product materials and specifications, at any time, without notice. Consult the product's installation instructions for final dimensional data and other details prior to making cutout.

Warranties: Please see Use & Care manual or Bosch website for statement of limited warranty.

For more information on our entire line of products, go to www.bosch-home.com/us or call 1-800-944-2904

© BSH Home Appliances Corporation. All rights reserved. Bosch is a registered trademark of Robert Bosch GmbH.

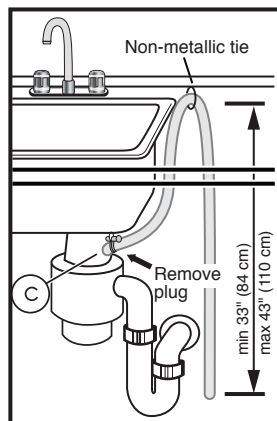
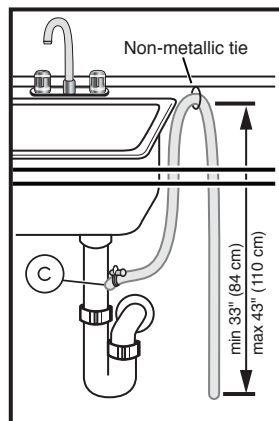
24" Recessed Handle Dishwasher

300 Series – Stainless Steel SHEMA63W55N



BOSCH
Invented for life

Installation Details



Note: Plumbing installations will vary - refer to local codes. Drain hose included is 79" (201 cm) and can be extended to a maximum of 155 3/4" (396 cm).

Always use the approved drain hose extension kit (SGZ1010UC).

Ensure a portion of the drain hose is raised between min. 33" (84 cm) and max. 43" (110 cm) above the cabinet floor.

Accessories: To purchase Bosch accessories, cleaners & parts please visit www.bosch-home.com/us/store or call 1-800-944-2904 (Mon to Fri 5 am to 6 pm PST, Sat 6 am to 3 pm PST).

Notes: All height, width and depth dimensions are shown in inches. BSH reserves the absolute and unrestricted right to change product materials and specifications, at any time, without notice. Consult the product's installation instructions for final dimensional data and other details prior to making cutout.

Warranties: Please see Use & Care manual or Bosch website for statement of limited warranty.

For more information on our entire line of products, go to www.bosch-home.com/us or call 1-800-944-2904

© BSH Home Appliances Corporation. All rights reserved. Bosch is a registered trademark of Robert Bosch GmbH.

Café™ 36" Built-In Touch Control Induction Cooktop

CHP95362MSS



FEATURES & BENEFITS

Take culinary skills to the next level with **Gourmet Guided Cooking**, which combines video-guided recipes from chefs with a system that automatically adjusts the time, temperature and cooking pace for perfect results.

Control your cooktop from any room in the house with your Smart phone using **WiFi Connect**.

Prep like a pro with rapid, precise heat control that stays cool to the touch using **five induction elements**.

When you're updating your kitchen, attention to detail is a priority. That's why Café cooktops are guaranteed for an exact fit for an easy and seamless replacement.

Make your cooking process as impressive as the food itself, with **touch controls** that let you control heat with just one swipe.

Cook pastas al dente in no time, with an **11" induction element** that boils a quart of water in 101 seconds.

Evenly heat large cookware like griddles or dutch ovens by controlling **two 7" synchronized elements** with just the touch of a button.

Make multitasking look easy with a **multi-element timer** that lets you manage up to five pans at once.

Prevent unintended burner activation with **control lock capability**.

Customize your cooktop to meet your unique needs with **personalized settings**.

Sear with speed with **Pan presence and size sensors** that heat to the size of your pan and turn off when it's off the cooktop.

APPEARANCE

Color Appearance	Stainless Steel
Frameless	Yes

FEATURES

Cooktop Surface	Gray Ceramic Glass with Beveled-Edge
Cooktop Burner Type	5 Induction Elements
Element - Left Front	7" 2500W
Element - Left Rear	7" 2500W
Element - Right Front	8" 3200W
Element - Right Rear	6" 1800W
Element - Center	11" 3700W
Control Location	Front Center
Control Type	Glide Touch
Element - Right Rear	6" 1800W
Control Location	Front Center
Control Type	Glide Touch
Cooktop Control Features	All-Off Control
	Control Lock Capability
	Custom Settings
	Kitchen timer
	Melt Setting
Melt Setting	Multi-element timer
	Sync-Burners Capability
Indicator Lights	5 Hot Surface
	Surface Element "ON"
	Setting Level Indicators
	Blue/Red
Power Cord Length	36"
Timer	Yes
Optional Accessories	JXSOUV1 - Precision cooking probe

WEIGHTS & DIMENSIONS

Approximate Shipping Weight	57 lb
Cabinet Width	36 in
Cooktop Size	36 in
Cutout Dimensions (Width x Depth) (In.)	33-7/8 x 19-1/8
Net Weight	50 lb
Overall Depth	20 3/8 in
Overall Height	4 5/8 in
Overall Width	36 in

POWER/RATINGS

Amp Rating at 208V	50
Amp Rating at 240V	50
KW Rating at 208V	9.6
KW Rating at 240V	11.1

ACCESSORIES

Griddle	Included
---------	----------

Café™ 36" Built-In Touch Control Induction Cooktop

CHP95362MSS



WARRANTY

Parts warranty	Limited 1-year entire appliance
Labor warranty	Limited 1-year entire appliance

DIMENSIONS AND INSTALLATION

Important: Requires a 3" free area between the bottom of the cooktop to any combustible material, i.e., shelving. Free area not required when installing wall oven underneath cooktop. Refer to installation instructions. Requires a 15" minimum from cooktop to adjacent overhead cabinets. Units are furnished with a 48" flexible armored cable.

Note: 36" induction cooktops are approved for use over select GE 30" Single Wall Ovens and Warming Drawers. Refer to cooktop and wall oven/warming drawer installation instructions packed with product for current dimensional data. If installed with a GE Telescopic Downdraft System, consult both the cooktop and downdraft installation instructions packed with product before installing. Cooktop gas/electric supply may need to be re-routed to install downdraft. The countertop cutout requires 23-1/2" minimum flat countertop surface and 25" minimum total countertop depth. In addition, other clearances to front edge of the countertop must be considered.

Before installing, consult installation instructions packed with product for current dimensional data.

KW RATING

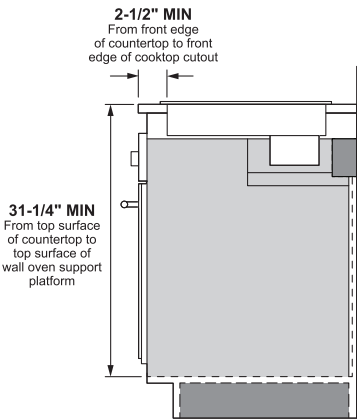
240V	11.1
208V	9.6

AMPERAGE

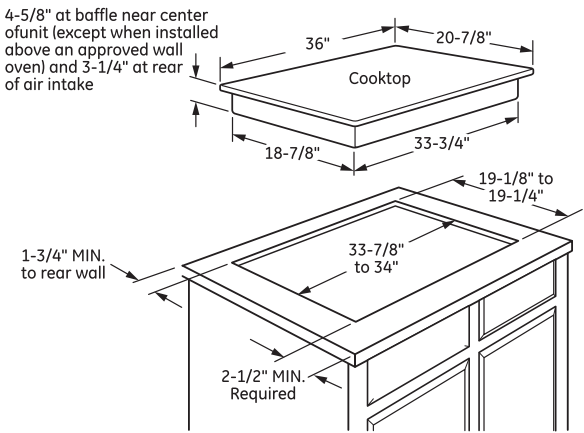
240V	50 Amps¹
208V	50 Amps¹

Note: Check local codes for required breaker size.

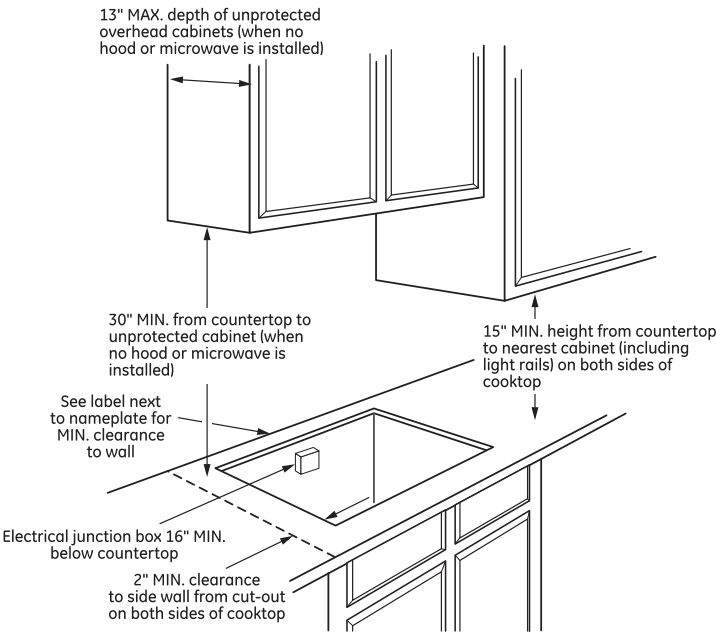
Installation above a wall oven



Approximate Cooking Dimensions



To insure accuracy, it is best to make a template when cutting the opening in the counter



LG LAUNDRY

DLEX4500B

7.4 cu.ft. Capacity Electric Dryer

TurboSteam™ Technology

LG ThinQ Technology (Wi-Fi Enabled)

Sensor Dry System

ENERGY STAR® Qualified

SmartDiagnosis™

Touch Control Panel

AI Sensor Dry™

FlowSense™ Duct Clogging Indicator

Enjoy new ways to control your home with LG smart appliances

- Start the laundry while you're out shopping
- Get alerts when the cycle is finished
- Works with the LG ThinQ® app



CAPACITY	
Capacity (cu.ft.)	7.4
APPEARANCE	
Design Look	Front Control
Intelligent Electronic Controls with LED Display	•
Touch Buttons	•
Dial-A-Cycle™	•
ENERGY	
ENERGY STAR® Qualified	•
DRYING PROGRAMS	
No. of Programs - 14	Normal, Heavy Duty, Bedding, Small Load, Anti Bacterial, SteamSanitary™, SteamFresh™, Perm Press, Delicates, Sportswear, Towels, Speed Dry (Manual Dry), Air Dry (Manual Dry), Downloaded
No. of Options - 12	More Time, Less Time, Damp Dry Signal, Wrinkle Care, Control Lock, Wi-Fi, Energy Saver, TurboSteam™, Reduce Static, Remote Start, Drum Light, Signal
Temperature Settings	High, Mid High, Medium, Low, Ultra Low
Drying Levels	Very, More, Normal, Less, Damp
Manual Dry Times	60 min, 50 min, 40 min, 30 min, 20 min, More Time/Less Time
FABRIC CARE FEATURES	
AI Sensor Dry™	•
Sensor Dry	•
TurboSteam™	•
Precise Temperature Control and Variable Heater	•
CONVENIENCE FEATURES	
3 Minute Installation Check	•
LoDecibel™ Quiet Operation	•
End of Cycle Signal	•
Drum Light	•
Reversible Door	•
FlowSense™ Duct Clogging Indicator	•
Wrinkle Care Option	•
Control Lock	•
Venting Option	4 Way Venting
4 Leveling Legs	•
Remaining Time Display/Status Indicator(s)	•

ThinQ® TECHNOLOGY	
SmartDiagnosis™ (v3.0)	•
Wi-Fi	•
Remote Start and Cycle Monitor	•
Energy Monitoring	•
MATERIALS AND FINISHES	
NeveRust Stainless Steel Drum	•
Cabinet	Painted Steel
Control Panel	Plastic
Door / Rim	Chrome (with Dark Black Tinted Square Cover)
All Available Colours	Black Steel (B)
POWER SOURCE	
Ratings	CSA Listed
Electrical Requirements	240V, 30Ams
Type	Electric
OPTIONS	
Pedestal	WDP4B
Pedestal (WxHxD)	27" x 14 1/8" x 28 2/5"
Stacking Kit	KSTK1
DIMENSIONS	
Product (WxHxD)	27" x 39" x 30" 51" (With door open)
Carton (WxHxD)	29 1/2" x 42 1/4" x 31 1/4"
Weight (Product/Carton)	133.4 lbs / 150.1 lbs
LIMITED WARRANTY	
1 Year Parts and Labour, 3 Years on Drum	
UPC CODES	
WM4500HBA	048231026772
DLEX4500B	772454073052
WDP4B	048231026451
KSTK1	772454059896

LG Washer - MODEL # WM4500HBA

DIMENSIONS



SUMMARY

CAPACITY

5.8 cu.ft.

DIMENSIONS (WXHxD)

27" x 39" x 33 1/4" (55" D with door open)

STEAM TECHNOLOGY

Yes

THINQ®

Yes

CAPACITY

Capacity5.8 cu.ft.

APPEARANCE

Design LookFront Control

Intelligent Electronic Controls with LED DisplayYes

Touch ButtonsYes

Dial-A-Cycle™Yes

ENERGY

2020 Energy Star Most EfficientYes

CEE TierAdvanced

WASH PROGRAMS

No. of Programs14

ProgramsNormal, Heavy Duty, Bedding, Sanitary, Allergiene™, Bright White, Tub Clean, Delicates, Perm. Press, Sportswear, Towels, Speed Wash, Rinse+Spin, Downloaded, Hand Wash/Wool*

*Downloadable Cycle

WASH OPTIONS

No. of Options	16
Options	TurboWash®, Steam, Fresh Care, Pre-wash, Remote Start, Delay Wash, Wi-Fi, Add Item, Extra Rinse, Control Lock, Drum Light, ColdWash, Spin Only, Detergent Level, Softener Level, signal

WASH DETAILS

No. of Wash/Rinse Temps	5
Wash/Rinse Temps	Extra Hot, Hot, Warm, Cold, Tap Cold
No. of Speeds	5
Spin Speeds	Extra High, High, Medium, Low, No Spin
Water Levels	Load Sensing
No. of Soil Levels	5

FABRIC CARE FEATURES

AI DD™	Yes
TurboWash® 360	Yes
Steam Technology	Yes
Allergiene™ Cycle	Yes
Sanitary Cycle	Yes
ColdWash™ Option	Yes

CONVENIENCE FEATURES

TrueBalance™ Anti-Vibration System	Yes
------------------------------------	-----

4 Tray Dispenser	ezDispense cartridge(Detergent, Softener), Main Wash, Bleach(cup)
LoDecibel™ Quiet Operation	Yes
End of Cycle Signal	Yes
LoadSense	Yes
Child Lock	Yes
Auto Suds Removal	Yes
Leveling Legs	Yes
Easy Loading TilTub™	Yes

THINQ® TECHNOLOGY

Smart Diagnosis™ (v3.0)	Yes
WiFi	Yes
Remote Start and Cycle Monitor	Yes
Energy Monitoring	Yes

MOTOR

Max RPM	1300
Motor Type	Inverter Direct Drive Motor
Axis	Horizontal

MATERIALS AND FINISHES

NeveRust™ Stainless Steel Drum	Yes
--------------------------------	-----

Cabinet	PCM
Control Panel	Plastic
Top Plate	Painted Steel
Door / Rim	Glass/Chrome (With Dark Black Tinted Square Cover)
All Available Colours	Black Steel

POWER SOURCE

Ratings	UL Listed
Electrical Requirements	120V, 10 Amps
Type	Electric

OPTIONS/ACCESSORIES

Pedestal	WDP4B
Pedestal (WxHxD)	27" x 14 1/8" x 30 3/4"
LG Pedestal Washer	WD100CB
LG Pedestal Washer (WxHxD)	27" x 14 1/8" x 30 3/4" (50 9/16" D with door open)

DIMENSIONS

Product (WxHxD)	27" x 39" x 33 1/4" (55" D with door open)
Depth with Door Open	55"
Carton (WxHxD)	29 23/32" x 43 4/32" x 33 28/32"
Weight (Product)	201.5 lbs.

LG COOKING

LWC3063ST

Combi Wall Oven

1.7 cu.ft. Microwave (Speed Oven)

Infrared Heating™

4.7 cu.ft. Oven

Crisp Convection

Self+EasyClean

SmartThinQ® WiFi Technology



Enjoy new ways to control your home with LG smart appliances

- Start or stop your Oven remotely
- Set your Monitor Status from your smartphone
- Works with the LG SmartThinQ® app

SmartThinQ®



SUMMARY	
Total Oven Capacity (cu. ft.)	6.4 (Upper & Lower)
Colors	Stainless Steel
UPPER OVEN FEATURES	
Capacity (cu.ft)	1.7
Interior(Cavity) - Upper MWO / Lower Oven	Stainless / Enamel Coating
Microwave Power output	950W
Microwave mode power consumption	1650W
Convection Bake mode power consumption	1550W
Broil mode power consumption	1650W
Convection Element (W)	1500W (Sheath heater)
Broil Upper Element (W)	1200W = 700W (Miraclon heater) + 500W (Infrared Heating™)
Broil Lower Element (W)	375W (Miraclon heater)
Microwave	Yes
Convection Bake	Yes
Broil	Yes
Speed cook	Yes (TurboCook™)
- # of Defrost (4 Menu)	Meat / Poultry / Fish / Bread
- # of Sensor cook (9 Menu)	Beverage / Casserole / Chicken / Pasta / Pizza / Plate of food / Rice / Soup / Vegetable Bacon (regular sliced) / Bagels (frozen) / Baked Corn dog (frozen) / Fresh vegetable / Frozen chicken wings / Frozen fries / Frozen chicken nuggets / Frozen pizza (regular crust) / Frozen soft pretzels / Frozen vegetable / Garlic bread (sliced, frozen) / Hamburger (1/2" thick) / Lamb chops (1/2" chick, 6-7oz) / Meat loaf (9" X 5") / Nachos / Oatmeal / Pork chops (1/2" thick, 6-7oz) / Quinoa / Rib eye steak (1" thick 14-15oz) / Rice / Salmon steak (1" thick) / Sausage / Sirloin steak (1" thick, 18-21oz) / Tenderloin / Vegetable-canned
- # of Auto cook (28 Menu)	
- # of Soften (4 Menu)	Butter & Margarine / Cream Cheese / Ice Cream / Frozen Juice
- # of Melt (5 Menu)	Butter / Caramel / Cheese / Chocolate / Marshmallow
LOWER OVEN FEATURES	
Capacity (cu.ft)	4.7
EasyClean®	Yes
Self Clean	Yes (3,4,5 hours)
Variable cleaning time	Yes (3,4,5 hours)
Variable broil	Yes (Full,Center / High,Med,Low)
Broil element	2,500 watts inner / 1,500 watts outer
Bake element	2,500 watts
Bake element type	Hidden (8 pass)
# of rack position	5
12 hrs. shut-off	Yes
- # of light	3 (Halogen Lamp - 3 dimension lighting)
Convection conversion	Yes
-Convection element	Yes (2,000 watts Sheath heater)
Convection System/Mode/Cooking System	Conventional
Convection Fan	Dual Speed (High/Low)
Oven Cooking mode	Conv.Bake / Conv.Roast / Bake / Broil / Steam Bake / Steam Roast / Probe / more mode (Favorite/Warm/Proof)
Oven Control Features	Glass Touch (SmoothTouch™)
Door Lock	Yes

CONTROL	
Oven Control Type	Glass Touch (SmoothTouch™)
Display	White VFD
Language	English / French
Smart Function	Wi-Fi / Smart Buzzer
Clock	12 hr or 24 hr (option)
Kitchen Timer	Yes
Timed Cook	Yes
Temperature Unit of Measure	Fahrenheit / Celsius
Cooking Complete Reminder Volume	Beeper (1. Loud, 2. Low, 3. Mute)
APPEARANCE	
Available Colors	Stainless Steel
Handle/Knobs	Stainless Steel Finish (Aluminum)
Oven Door Feature	WideView™ Window
Scratch-Resistant	Yes
Smudge Resistant Finish	No

SmartThinQ® SMART FEATURES	
SmartDiagnosis™	Yes
Wi-Fi Connectivity	Yes
Works with	Google Assistant and Amazon Alexa
SmartThinQ®	Yes
DIMENSIONS/CLEARANCES/WEIGHT	
Shipping Weight (lbs)	244 lbs
Product Weight (lbs)	194 lbs
Product (W x H x D)	29 3/4" x 43 13/16" x 24 1/2"
Cut-out (W x H x D)	28 1/2" x 43 8/19" x 23 1/2"
Overall Depth (in) - including handle	26 7/8"
Actual Depth with Door Open (Upper) (in):	37.1"
Actual Depth with Door Open (Lower) (in):	45.7"
Oven Interior Dimensions (Upper) (in) (W x H x D)	20 8/11" x 8 9/25" x 17 5/13"
Oven Interior Dimensions (Lower) (in) (W x H x D)	24 1/2" x 17 5/8" x 18 7/8"
Carton Dimensions (in) (W x H x D)	33" x 30" x 50"
POWER/RATINGS	
Amp at 240V	32.5A
kW at 240V	7.8kW
Requirements	120 / 240 VAC, 120 / 208 VAC
ACCESSORIES	
Glass Tray(Upper)	Yes
Metal Tray(Upper)	Yes
Rack(Upper)	Yes
Broiler pan & Grid	Yes
Gliding Rack	1
Heavy Duty Rack	2
Meat probe	Yes
Scouring Pad	Yes
WARRANTY	
Parts & Labor	1 Year
UPC CODES	
LWC3063ST (Stainless Steel)	048231339810

LWC3063ST

Combi Wall Oven

QUICK INSTALL & CLEARANCES

For full installation directions/clearances please refer to the corresponding User Manual and Installation Guide.

DIMENSIONS / CLEARANCES / WEIGHT

Product Dimensions (in) (W x H x D)	29 3/4" x 43 13/16" x 24 1/2"
Cut-out (W x H x D)	28 1/2" x 43 8/19" x 23 1/2"
Overall Depth (in) - including handle	26 7/8"
Actual Depth with Door Open (Upper) (in):	37.1"
Actual Depth with Door Open (Lower) (in):	45.7"
Oven Interior Dimensions (Upper) (in) (W x H x D)	20 8/11" x 8 9/25" x 17 5/13"
Oven Interior Dimensions (Lower) (in) (W x H x D)	24 1/2" x 17 5/8" x 18 7/8"
Carton Dimensions (in) (W x H x D)	33" x 30" x 50"

POWER RATINGS

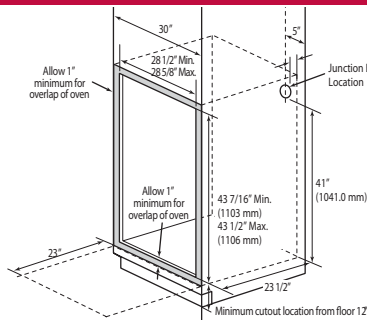
Amp at 240V	32.5A
kW at 240V	7.8kW
Requirements	120 / 240 VAC, 120 / 208 VAC

INSTALLATION REQUIREMENTS

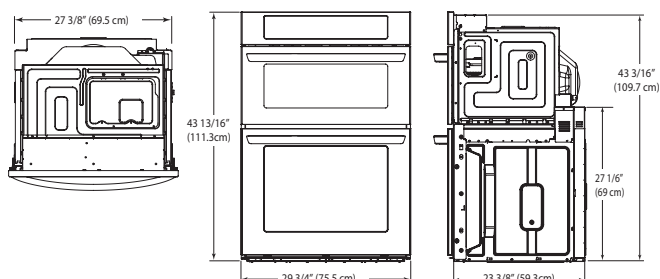
- The cabinet base platform must be able to support 202 lbs (91.65 kg) for a Microwave Combination Wall Oven. If the cabinet does not have a solid bottom, two braces or runners must be installed level with the bottom of the cutout to support the weight of the oven. Make sure the base is level and the front of the cabinet is square. If the cabinet base is not level, the oven racks will tend to slide out when opening the door.
- If marks, blemishes or the cutout opening are visible above the installed oven, it may be necessary to add wood shims under the runners and front trim until the marks or opening are covered.
- If the cabinet does not have a front frame and the sides are less than 3/4" (1.9 cm) thick, shim both sides equally to establish the cutout width.
- The junction box must be flush with the rear wall of the cabinet as shown below.
- Allow at least a 23" clearance for the door depth when it is open.
- Kitchen cabinets in contact with the oven must be heat resistant up to 194°F (90°C), and fronts of nearby units up to at least 158°F (70°C).

CUTOUT DIMENSIONS

- Cabinet Width: 30" (762 mm)
- Recommended Minimum Cutout Location from Floor: 12" (304.8 mm)
- Cutout Depth: 23 1/2" Min. (596.9 mm)
- Cutout Width: 28 1/2" Min. (723.9 mm)
28 5/8" Max. (727 mm)
- Cutout Height: 43 7/16" Min. (1103 mm)
43 1/2" Max. (1106 mm)

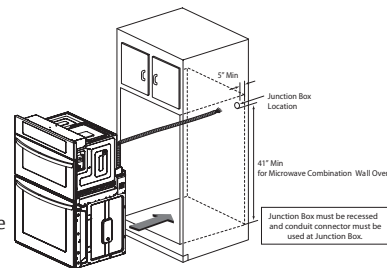


PRODUCT DIMENSIONS



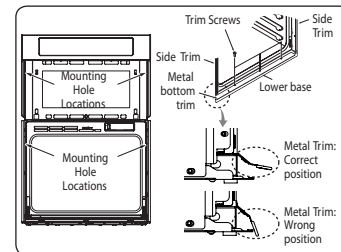
ELECTRICAL CONNECTIONS

- Be sure the wall oven is installed and grounded properly by a qualified installer or service technician.
- This wall oven must be electrically grounded in accordance with local codes or, in their absence, with the National Electrical Code ANSI/NFPA No. 70 - latest edition in United States, or with CSA Standard C22.1-1982 and C22.2 No. 01982 (or latest edition), Canadian Electrical Code, Part 1, and all local codes and ordinances.
- This wall oven must be supplied with the proper voltage and frequency, and connected to an individual, properly grounded branch circuit, protected by a circuit breaker or fuse. For the circuit breaker or fuse required by this model, see the rating plate to find the wattage consumption and refer to the table below to get the circuit breaker or fuse amperage.
- A Microwave Combination Wall Oven can consume up to 7,800 W at 240 VAC. A 50 Amp circuit breaker with wire gauge #8 AWG must be used.
- Do Not ground to a gas pipe.
- Do Not have a fuse in the neutral or grounding circuit.
- A UL-listed conduit connector must be provided at the junction box.
- Prepare the electrical connection as follows:
 - Turn off the circuit breaker or remove fuses to the oven branch circuit.
 - With the oven positioned directly in front of the cabinet opening, connect the flexible conduit to the electrical junction box as shown below. Position the conduit in such a manner that it will lie on top of the oven in a natural loop when the oven is installed.
 - If local codes permit connection of the frame grounding conductor to the neutral(white) wire, follow the instructions for a 3-wire circuit connection.
 - If used in mobile homes or new construction, or a recreational vehicle, or local codes do not permit connection of the frame grounding conductor to the neutral(white) wire, follow the instructions for a 4-wire circuit connection.



INSTALL THE OVEN

- Install the oven into the cabinet as follows:
 - Slide the oven into the opening.
 - Loop (do not tie) a 36" (91 cm) string around the conduit before the oven is slid into place. Lay the string over the top of the oven and use it to keep the conduit from falling behind the oven.
 - Lift oven into cabinet cutout using the oven opening as a grip. Carefully push against the oven front frame. Do not push against outside edges.
 - While sliding the oven back, pull the string so that the conduit lies on the top of the oven in a natural loop.
 - When you are sure the conduit is out of the way, slide the oven 3/4 way back into the opening. Remove the string by pulling on one end of the loop.
 - Secure the oven.
 - Using the mounting holes on the oven side trim as a guide, drill pilot holes for screws provided. (For securing the Combi Oven, use a minimum of 4 screws, one on each side in both the upper and lower ovens.)
 - Secure the oven to the cabinet with screws provided. If the cabinet is particle board, you must use 3/4" particle board screws. These may be purchased at any hardware store.
 - Install the metal bottom trim.
 - Place the metal bottom trim centered over the pre-drilled mounting holes on the lower base.
 - Using 3 screws provided, secure the bottom trim to the bottom edge of the cabinet.
 - Reinstall the oven door.



30" Slow Cook Warming Drawer

SAVE \$300.00 (12%)

Sale: \$2,099.99 ~~\$2,399.99~~

ADD TO CART

☐

COMPARE

30" Slow Cook Warming Drawer

Model: KOWT100ESS

4.5 (113) Write a review

X

SIGN UP



Sale: \$2,099.99

~~\$2,399.99~~ SAVE \$300.00 (12%)

ADD TO CART

WHERE TO BUY

Estimated Arrival for K1A: **Thursday, Dec. 1**

[Change this location?](#)

Key Features

- Slow Cook Function
- Custom-Control Technology
- Sensor Temperature Control
- Bread Proofing
- Humidity Slide Control

Shop with Confidence

FREE STANDARD SHIPPING ON ORDERS OVER \$44.99

Applicable to everydrop® water filters, appliance cleaners and major appliance accessories.

TERMS APPLY

FLEXIBLE & EASY RETURNS

Not happy with your new everydrop® water filter, Affresh® cleaning product or major appliance accessory? No matter the reason, it's no problem. Request your return or exchange within 5 business days from the date of delivery for a product refund.

TERMS APPLY



SIGN UP



NEED HELP? OUR TEAM IS HERE TO HELP

We've Got You Covered! Our Virtual Shopping Team has the answers to all your appliance-buying questions. Try our Live Chat today.

[CONTACT US](#)

Overview

Product Description

30" Slow Cook Warming Drawer

This Architect® Series II 30-inch warming drawer gives you the versatility of an oven, bread maker, and slow cooker in one integrated space. Warm multiple dishes at the same time, proof bread, or slow cook beef and poultry. Custom-control technology allows you to use the drawer for various tasks with mouthwatering results.



SIGN UP



Specifications

[DOWNLOAD DIMENSION GUIDE](#)

Height:
26.04, 10-1/4”
Centimeters, Inches

Width:
75.56, 29-3/4”
Centimeters, Inches

Depth:
66.04, 26.0”
Centimeters, Inches

Certifications

Prop 65



CALIFORNIA RESIDENTS ONLY -
WARNING: Cancer and Reproductive
Harm - www.P65Warnings.ca.gov.

Dimensions

Capacity	1-1/2
Depth	66.04 cm, 26.0 in
Height	26.04 cm, 10-1/4 in
Net Weight	26.31 kg, 58 lbs
Width	75.56 cm, 29-3/4 in

Configuration and Overview

Removable Drawer	Yes
Size	76.20 cm, 30 in

X

SIGN UP

Appearance

Handle Material	Metal
-----------------	-------

Controls

Control Location	Interior Up Front
Humidity Control Location	On Drawer Front
Humidity Control Type	Moist & Dry Selections
Knob Color	Black
Sensor Temperature Manangement	Yes

Details

Heating Elements	600 W, 600 W, 600 W, 600 W
Number of Racks	2

Refinements

Features	Bread Proofing, Slow Cook Function
----------	------------------------------------

EndecaProps

Status Badge Espot	New
Status Badge Espot CA	New

X

SIGN UP

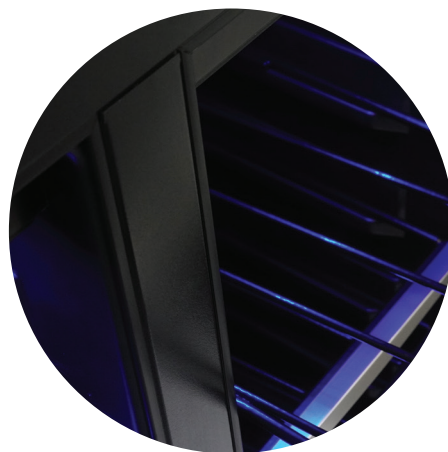
✉

EMMENTAL

24" FRENCH DOOR BEVERAGE CENTER

Silhouette

www.silhouetteappliances.com



*Extendable shelves with
spotless steel trim*



*Modern capacitive
touch controls*

PRODUCT FEATURES



Dual Temperature Control

Strategically placed internal sensors constantly monitor and react to help create a stable internal temperature.



Frost-Free Fan Forced Cooling

Minimizes temperature stratification.



Interior Lighting

Improved interior lighting 50% brighter.

42db

Quiet operation

EMMENTAL

24" FRENCH DOOR BEVERAGE CENTER

Silhouette

www.silhouetteappliances.com

BENEFITS

Model #	SBC051D1BSS
Capacity-Wine	Up to 27 wine bottles*
Capacity-Beverage	Up to 60 beverage cans
Volume	5.1 cu. ft.
Temp Range-Wine	41°F-64°F(5°C-18°C)
Temp Range-Beverage	37°F-64°F(3°C-18°C)
Noise	42 db
Door Frame	Durable 304 grade stainless steel
Cabinet	Matte black textured steel
Interior Finish	Matte black
Door Style	French door
Reversible Door Swing	Yes
Door Hinge	Designed for flush fit installation
Door Handle	Crescent handle
Door Lock	No
Shelving	Up to 40% extension
Shelving Material-Wine	Plastic coated wire
Shelving Material-Bev	Clear glass
Wave Wine Storage	Yes
Lighting Option 1	On/Off with door opening/closing
Lighting Option 2	On 100% illumination for 60min
Lighting Option 3	On 50% illumination for 60min
Lighting Option 4	Always on
Light Colours	Blue LED display light with hi/low selection
Controls	Seamless digital controls
Temperature Recall	Yes reverts to last set temperature after power out
Alarm	Yes, temperature and door ajar

PRODUCT SPECIFICATIONS

UPC 067638023078

Unit Dimensions

Width 23.8" in.
Min. Height 34.1" in.
Max. Height 34.3" in.
Depth 23.8" in.

(DOES NOT INCLUDE HANDLE)

Installation

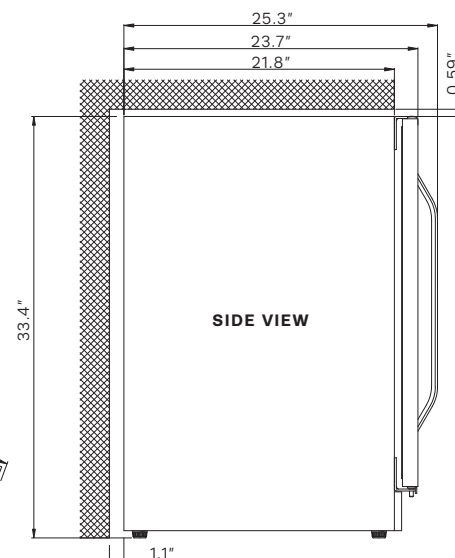
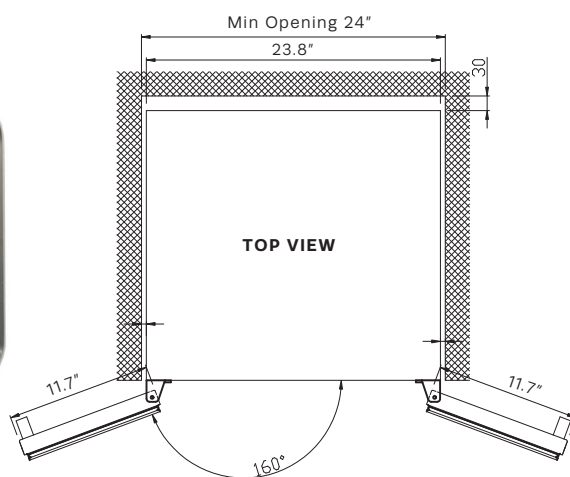
Gross Weight: 127.9 lbs.
Built-in under counter or free standing
Refrigerant: R600a
Size: Min 24" wide opening required

AC Power

115V, 60Hz at MAX 1.5A
Power cord length: 6.5 ft.

Platinum Warranty

2 year parts and labor coverage:
In home service



*based on standard 750ml
Bordeaux style bottle

RF28NHEDBSR

SAMSUNG

Samsung 4-Door French Door with 21.5" Connected Touchscreen Family Hub™ Refrigerator

28 cu. ft. Capacity



Signature Features

Food

- Use your voice to add items to your shopping lists.
- See inside from anywhere with 3 built-in cameras.

Family

- Sync calendars for all family activities and events.
- Remotely share photos, notes and memos.

Fun

- Stream music, mirror your Samsung TV or Samsung phone directly on your Family Hub™ screen.

Connect

- Simplify your life through the SmartThings app by controlling smart devices and appliances: set lights, adjust the thermostat or monitor your baby's room.

Available Colors



Stainless Steel (shown)



Black Stainless Steel



Family Hub™



FlexZone™ Drawer

Features

- Bixby Voice – Intelligent voice assistant allows hands-free navigation
- FlexZone™ Drawer with 4-Temperature Control Settings and Smart Divider
- Twin Cooling Plus®
- Large Capacity – 28 cu. ft.
- External Filtered Water and Ice Dispenser
- Ice Master Ice Maker in the Refrigerator
- High-Efficiency LED Lighting
- ENERGY STAR®-Compliant
- EZ-Open Handle™ on Freezer Door and FlexZone™ Drawer

Convenience

- Two Humidity-Controlled Crispers
- Tempered Glass Spill-Proof Shelves
- Child Lock

Rating



ENERGY STAR®-rated:
745 kWh/yr

RF28NHEDBSR

SAMSUNG

Samsung 4-Door French Door with 21.5" Connected Touchscreen Family Hub™ Refrigerator

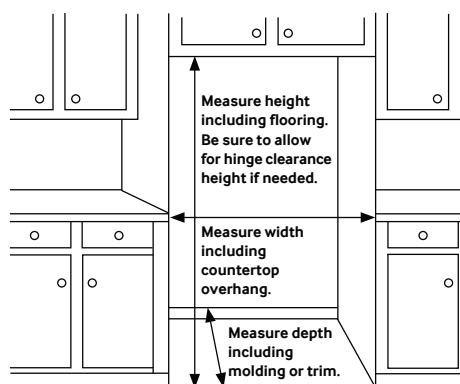
28 cu. ft. Capacity

Installation Specifications

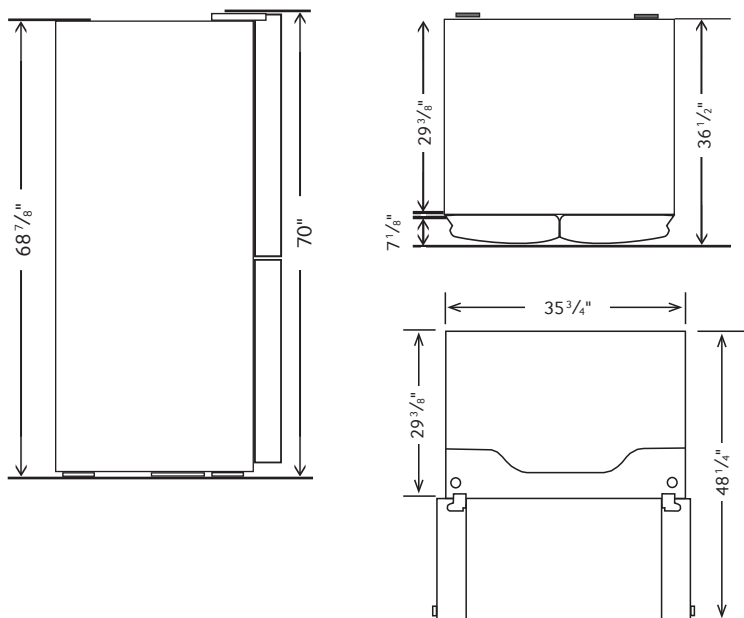
1. Measure the height, width and depth of the opening, making sure to include baseboards, molding tile, countertop overhang, etc. Check to be sure there is enough room to open the door (consider walls, islands or other obstacles when measuring).
2. Refer to illustration below to determine dimensions.
3. Allow 2.5" of clearance on hinge side of refrigerator when installing next to a wall where handle may make contact.
4. Allow 1" minimum clearance at rear for proper air circulation and water/electrical connections. Allow a 3/8" minimum clearance at sides and top for ease of installation.
5. Ensure each door and entryway in the home is wide enough for the refrigerator to be moved through easily.

For optimal usage and to be able to open refrigerator doors completely, do not install next to a wall.

Please note: The following dimension and cutout information is for planning purposes only. For complete installation details, consult manual packed with product, or download manual online at samsung.com.



Dimensions



Total Capacity: 27.7 cu. ft.

Refrigerator: 15.6 cu. ft.

- Premium External Filtered Water and Ice Dispenser (Crushed or Cubed Ice)
- High-Efficiency LED Lighting
- 2 Humidity-Controlled Crispers
- 5 Tempered Glass Spill-Proof Shelves
 - 1 Slide-In
 - 1 Slide-Out
 - 1 Foldable Half
 - 2 Fixed
- 6 Door Bins
 - Right Door: 3 Door Bins
 - Left Door: 3 Regular Bins

FlexZone™ Drawer: 3.8 cu. ft.

- Metal Cooling Plate
- 4 Temperature Zones with Smart Divider:
 - Meat/Fish (29°F)
 - Cold Drinks (33°F)
 - Deli/Snacks (37°F)
 - Wine/Party Dishes (42°F)

Freezer: 8.3 cu. ft.

- EZ-Open Handle™
- Take Out Box
- 1 Drawer Divider
- High-Efficiency LED Lighting

Warranty

One (1) Year Parts and Labor on Refrigerator
Five (5) Years Parts and Labor on Sealed Refrigeration System Only*
Ten (10) Years Parts and Five (5) Years Labor on Digital Inverter Compressor

*Compressor, evaporator, condenser, drier and connecting tubing.

Product Dimensions & Weight

Dimensions (WxHxD with hinges, handles and doors):
35 3/4" x 70" x 36 1/2"

Dimensions (WxHxD without hinges and door):
35 3/4" x 68 7/8" x 29 3/8"

Dimensions (WxHxD with hinge and door, no handle):
35 3/4" x 70" x 34"

Weight: 370.4 lbs.

Shipping Dimensions & Weight (WxHxD)

Dimensions: 38 1/4" x 76" x 36 7/8"

Weight: 394.6 lbs.

Color	Model #	UPC Code
Stainless Steel	RF28NHEDBSR	887276258263
Black Stainless Steel	RF28NHEDBSG	887276258249