



**Universal Appliances**

## **Bosch 800 Series 21 Cu. Ft. Stainless Steel French Door Bottom Freezer Refrigerator-B36CT80SNS**

Model #: B36CT80SNS

**\$3,899.00**

### **At a Glance**

An extra-deep frozen food drawer for practical stacking of frozen foods container or large frozen items like gateaux or pizzas. No matter whether you have to cater for a child's birthday or freeze a wedding cake – in the BigBox you will find enough space for large frozen goods.





Overview

Silence level (dBA)	40
Home Connect	Yes
Home Connect Features	iService Remote, Remote Monitoring and Control
Number of independent cooling systems	2
Door Open Indicator	Yes
No. of shelves in fridge	4
No. cont. in refrig. comp.	2
No. of egg racks	1
Defrost process fridge section	Automatic
Adjustable Shelves - Refrigerator	4
Number of shelves in fridge compartment	4
Temperature display fridge	Digital LED
Defrost process freezer section	Automatic
Freezing drawers (Stck)	3
Temperature adjustable freezer	Yes
Included accessories	1 x cartridge for water filtering system
Shelves for Bottles	Yes
Type of control	Economy setting / Holiday mode, Economy setting chest freezing, Super setting for freezer, Super setting fridge, Temperature display fridge, Temperature for freezer, Warning function freezer sect., Warning signal door open, Warning signal for malfunction
Warning signal / malfunction	Visual and audible

Misc. Specs

Product Weight	332
Width (in.)	35.63
Appliance Color	Stainless Steel
Depth (in.)	27.81
Handle Type	Arch
Total Capacity (cu. ft.)	21
Manufacturer Warranty	1 Year Parts & Labor
Appliance Fit Width (in.)	36
Ice Maker	Yes
Door Swing Option	Double Doors
Freezer Light	No
Door Alarm	No
Color Finish Name	Stainless Steel
Ice/Water Dispenser	Yes
Defrost System	Automatic
Outdoor Approved	No
ENERGY STAR Qualified	Yes
Commercial Use Approved	No
Installation Type	Built-In
ADA Compliant	Yes
Counter Depth	Yes
Wifi Capable	Yes
Smart Compatible	Yes
Width (cm)	90.5002
Depth (cm)	70.6374
Amp	10/16
Voltage	110/127
Frequency	60



CUSTOMER'S OWN APPLIANCE



Universal Appliances

Bosch 500 Series 36" Induction Cooktop-Black-NIT5668UC

Model #: NIT5668UC

\$2,549.00

At a Glance

Bosch 500 Series 36" Induction Cooktop-Black with 5 burners, SpeedBoost® and 17 power levels for each cooking zone



Other

Ignition	Electric
Safety Features	Childlock; SafeStart

Dimensions

Shipping Weight	62
Min to Front Edge of Counter	2.25
Cutout Dimensions	34.88" x 20" x 4.13" (WxDxH)

Styling

Control Panel Color	Black
Cooktop Surface	Ceramic Glass

Misc. Specs

Product Weight	53
Element Type	Induction
Fuel Type	Electric
Appliance Color	Black
Depth (in.)	21.25
Height (in.)	4.44
Width (in.)	37
Appliance Fit Width (in.)	36
Collection	500 Series
Color Finish Name	Black
ADA Compliant	No
ENERGY STAR Qualified	No
Commercial Use Approved	No
Smart Compatible	No
Wifi Capable	No
Number Of Elements Burner	Bosch
Grill Included	No
Griddle Included	No
Depth (cm)	53.98
Height (cm)	11.28
Width (cm)	93.98
Voltage	208/240
Frequency	60
Amp	40
Product Weight (kg)	24.04

DS

CG

DS

LD



# 30" Speed Combination Oven

800 Series – Stainless Steel HBL8753UC



CUSTOMER'S OWN APPLIANCE



**HBL8753UC**  
Stainless Steel

Also available in:

Black HBL8743UC  
Stainless Steel

**Bosch speed combination ovens create an all-in-one cooking center with an upper speed oven and a Genuine European Convection oven below.**

## Features & Benefits

2-in-1 microwave and convection oven with 9 SpeedChef® programs to simplify cooking with fast results.

Lower oven's convection multi-rack mode gives uniform baking results even when using all 3 racks simultaneously.

Oven is equipped with a self-cleaning cycle that easily cleans itself via 2, 3, and 4 hour cycle options.

Download the Home Connect app to remotely monitor and control your Bosch wall oven with your smart phone or tablet.

## General Properties

Home Connect™ – lower cavity (WiFi enabled)	Yes
Cooking modes – upper cavity	Speed oven; 12 Auto Programs (including Auto Defrost, Melt Butter, Soften Ice Cream, Pizza), 9 Sensor Cook Programs, 9 SpeedChef® Programs, Hi & Lo Broil, European Convection, Keep Warm, Frozen Foods
Cooking modes – lower cavity	Bake, Variable Broil (hi & low), Roast, Warm, Sabbath, Proof Dough, Convection Bake, Convection Broil, Convection Roast, Pizza, Multi Rack Genuine European Convection, Convection Conversion, Temperature Probe, Fast Preheat

Cleaning type – lower	Self Clean
Telescopic rack	1
Illumination type	LED (Upper) / Incandescent (Lower)
Interior lights	1 Upper / 2 Lower

## Oven Performance

Microwave power – upper cavity	1000 W
Bake / broil element wattages – upper cavity	600 / 1,750 W
Convection element wattages – upper cavity	1,700 W
Bake / broil element wattages – lower cavity	2,400 / 3,800 W
Convection element wattages – lower cavity	2,000 W

## Technical Details

Watts (W)	9,600 W
Circuit breaker (A)	40 A
Volts (V); Frequency (Hz)	240 / 208 V; 60 Hz
Power cord length (in)	50"
Plug type	Fixed Connection, No Plug
Energy source	Electric

## Dimensions & Weight

Overall appliance dimensions (HxWxD) (in)	49" x 29 3/4" x 24 1/2"
Required cutout size – Standard (HxWxD) (in)	48 5/8" x 28 1/2" x 23 1/2"
Required cutout size – Flush (HxWxD) (in)	49 1/8" x 30" x 24 1/2"
Speed oven cavity size – upper	1.6 cu. ft.
Overall upper speed oven interior dimensions (HxWxD) (in.)	9 7/8" x 16 1/2" x 16 1/2"
Metal turntable diameter (in)	14 1/8" dia.
Ceramic tray diameter (in)	13 3/4" dia.
Rack – rectangular cookware max. – upper	15" x 12"
Oven cavity size – lower	4.6 cu. ft.
Overall lower oven interior dimensions (HxWxD) (in)	17 13/16" x 24 1/8" x 18"
Usable lower oven interior dimensions (HxWxD) (in)	12 1/4" x 23 1/4" x 15 1/4"
Net weight (lbs)	259 lbs

## Accessories – Included

Upper Oven: Metal Turntable, Square rack, Ceramic Cooking Tray  
Lower Oven: 1 Telescopic and 2 Standard Oven Racks, Meat Probe

## Accessories – Optional



**HEZTR301**  
30" Telescopic Rack



\*Lower wall oven only

**Accessories:** To purchase Bosch accessories, cleaners & parts please visit [www.bosch-home.com/us/store](http://www.bosch-home.com/us/store) or call 1-800-944-2904 (Mon to Fri 5 am to 6 pm PST, Sat 6 am to 3 pm PST).

**Notes:** All height, width and depth dimensions are shown in inches. BSH reserves the absolute and unrestricted right to change product materials and specifications, at any time, without notice. Consult the product's installation instructions for final dimensional data and other details prior to making cutout.

**Warranties:** Please see Use & Care manual or Bosch website for statement of limited warranty.

**For more information on our entire line of products, go to [www.bosch-home.com/us](http://www.bosch-home.com/us) or call 1-800-944-2904**

© BSH Home Appliances Corporation. All rights reserved. Bosch is a registered trademark of Robert Bosch GmbH.





# 30" Speed Combination Oven

800 Series – Stainless Steel HBL8753UC

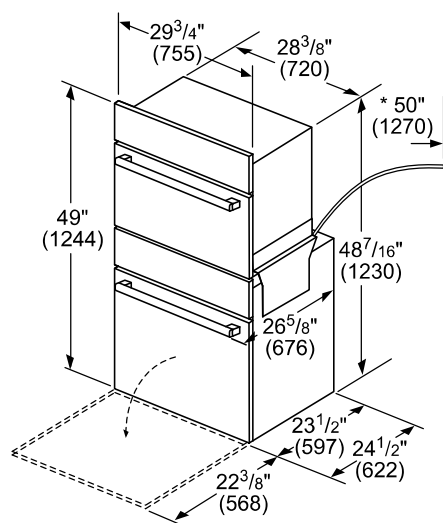


**BOSCH**

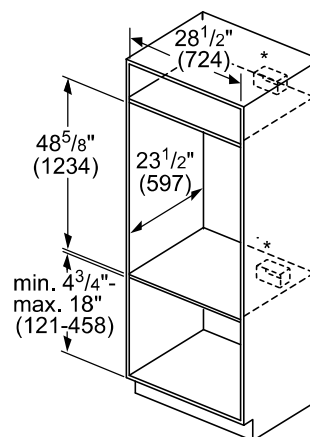
Invented for life

CUSTOMER'S OWN APPLIANCE

## Installation Details



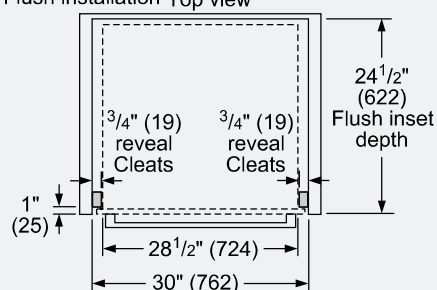
\* Power cable 50" (1270 mm) from the lower oven.



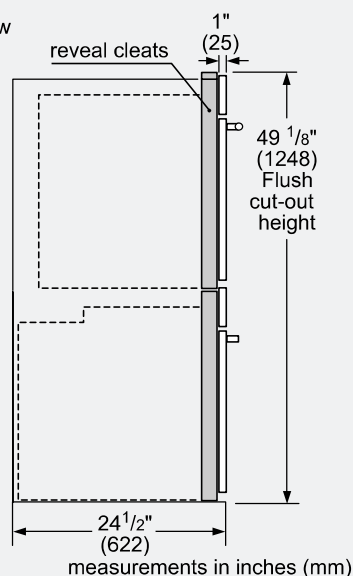
\* Junction box may be installed above, below, or to the left or right of the unit within reach of the power cable

measurements in inches (mm)

Flush installation Top view



Side view



measurements in inches (mm)

Example Flush Install



Single wall oven shown.

**Accessories:** To purchase Bosch accessories, cleaners & parts please visit [www.bosch-home.com/us/store](http://www.bosch-home.com/us/store) or call 1-800-944-2904 (Mon to Fri 5 am to 6 pm PST, Sat 6 am to 3 pm PST).

**Notes:** All height, width and depth dimensions are shown in inches. BSH reserves the absolute and unrestricted right to change product materials and specifications, at any time, without notice. Consult the product's installation instructions for final dimensional data and other details prior to making cutout.

**Warranties:** Please see Use & Care manual or Bosch website for statement of limited warranty.

**For more information on our entire line of products, go to [www.bosch-home.com/us](http://www.bosch-home.com/us) or call 1-800-944-2904**

© BSH Home Appliances Corporation. All rights reserved. Bosch is a registered trademark of Robert Bosch GmbH.

DS  
CA  
DS  
LD



# 30" Speed Combination Oven

800 Series – Stainless Steel HBL8753UC

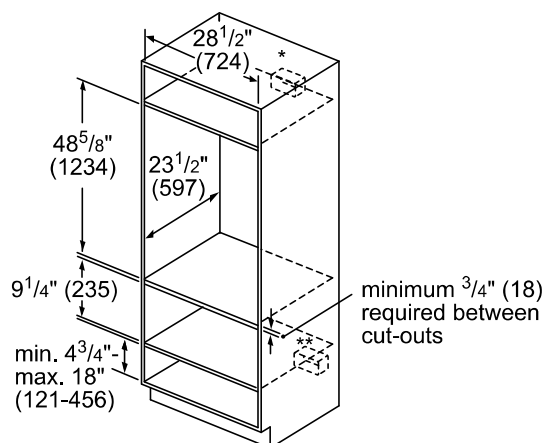


**BOSCH**

Invented for life

## Installation Details

### Standard Installation Combination oven over storage or warming drawer

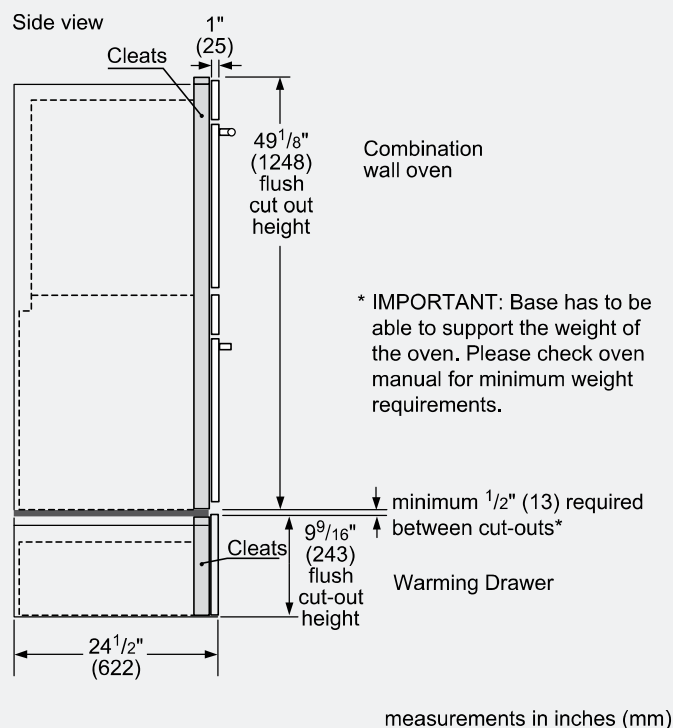


\* Wall oven junction box may be located above or to the right or left of the unit within reach of the power cable.

\*\* Electrical hook-up may be located below (depending on space) or next to the drawer within reach of the power cable.

measurements in inches (mm)

### Flush installation Combination oven over storage or warming drawer



\* IMPORTANT: Base has to be able to support the weight of the oven. Please check oven manual for minimum weight requirements.

measurements in inches (mm)

**Accessories:** To purchase Bosch accessories, cleaners & parts please visit [www.bosch-home.com/us/store](http://www.bosch-home.com/us/store) or call 1-800-944-2904 (Mon to Fri 5 am to 6 pm PST, Sat 6 am to 3 pm PST).

**Notes:** All height, width and depth dimensions are shown in inches. BSH reserves the absolute and unrestricted right to change product materials and specifications, at any time without notice. Consult the product's installation instructions for final dimensional data and other details prior to making cutout.

**Warranties:** Please see Use & Care manual or Bosch website for statement of limited warranty.

**For more information on our entire line of products, go to [www.bosch-home.com/us](http://www.bosch-home.com/us) or call 1-800-944-2904**

© BSH Home Appliances Corporation. All rights reserved. Bosch is a registered trademark of Robert Bosch GmbH.

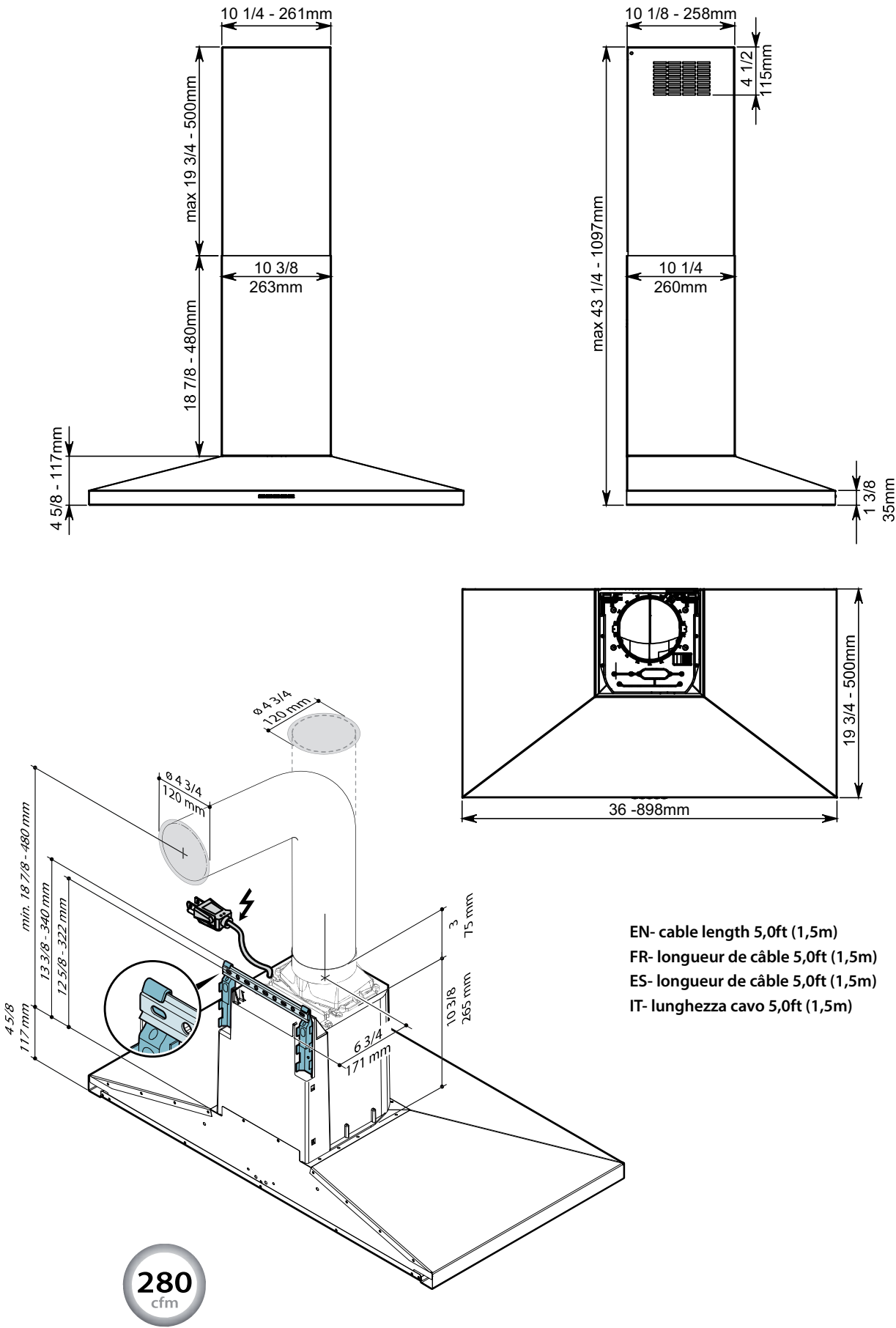
DS  
CA  
DS  
LD



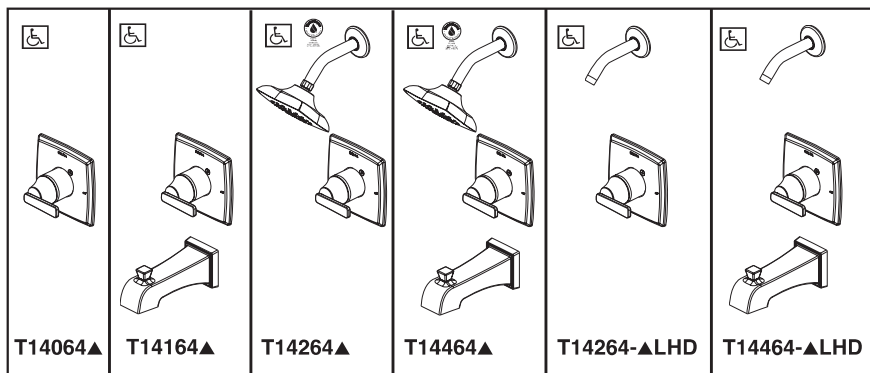
VULCANO 36"  
FPVUL36W3SS

120V 60HZ, 150W

 37lb - 17 kg

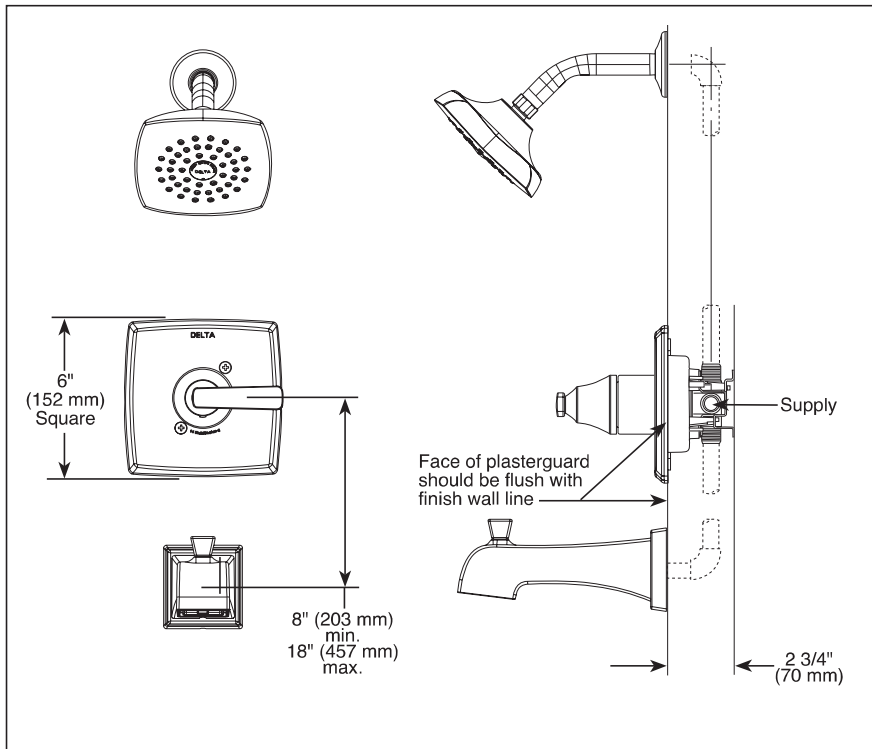
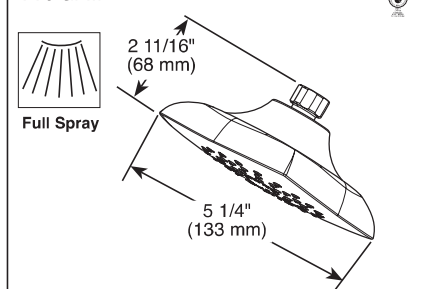
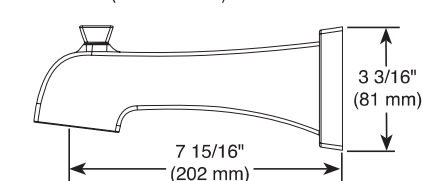
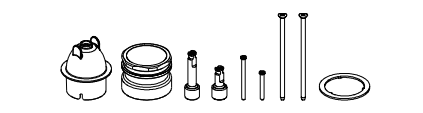
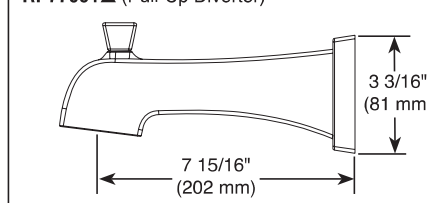






Submitted Model No.: \_\_\_\_\_

Specific Features: \_\_\_\_\_

**RP64859▲** Touch-Clean® Raincan Shower Head  
1.75 GPM**RP77092▲** (Non Diverter)**RP77991** Available Extension Kit**RP77091▲** (Pull-Up Diverter)**▲ Designate Proper Finish Suffix**

Delta reserves the right (1) to make changes in specifications and materials, and (2) to change or discontinue models, both without notice or obligation. Dimensions are for reference only. See current full-line price book or [www.deltafaucet.com](http://www.deltafaucet.com) for finish options and product availability.

DSP-B-T14064 Rev. F



see what Delta can do™

**TUB AND SHOWER  
FAUCET TRIM**

- Ashlyn® Bath Collection
- Valve Only (T14064)
- Tub Only (T14164)
- Shower Only (T14264 & T14264-LHD)
- Tub/Shower (T14464 & T14464-LHD)

**FEATURES:**

- Monitor® 14 Series pressure balanced bath mixing valve trim

**STANDARD SPECIFICATIONS:**

- Maintains a balanced pressure of hot and cold water even when a valve is turned on or off elsewhere in the system
- For use with MultiChoice® Universal rough valve body (R10000 Series)
- Back-to-back installation capability
- Solid brass forged body
- Temperature only controlled with handle
- Field adjustable to limit handle rotation into hot water zone
- 120° maximum handle rotation
- All parts replaceable from the front of the valve
- Maximum 1.75 gpm @ 8-psi, 6.6 L/min @ 550 kPa
- Tub port maximum flow rate 6.0 gpm @ 60 psi with R10000-UNBX
- Shower arm overall horizontal length = 5 1/2" (138 mm), including threaded ends
- Red/blue pad print temperature indicators on handle
- "-LHD" models indicate less shower head
- Stem extension kit RP77991 can be ordered to allow for an additional 1 3/4" wall thickness. RP77991 ships with chrome escutcheon screws. For special finishes also order RP12630 escutcheon screws in desired finish.

**WARRANTY**

- Parts and Finish - Lifetime limited warranty; or for commercial purchasers, 10 years for multi-family residential (apartments and condominiums) and 5 years for all other commercial uses, in each case from the date of purchase.
- Electronic Parts and Batteries (if applicable) - 5 years from the date of purchase; or for commercial purchasers, 1 year from the date of purchase. No warranty is provided on batteries.

**COMPLIES WITH:**

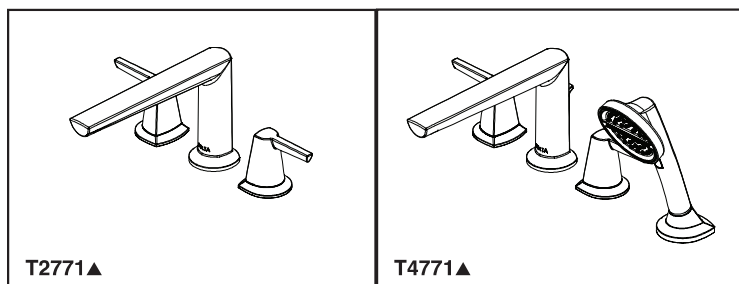
- ASME A112.18.1 / CSA B125.1
- ASSE 1016
- Indicates compliance to ICC/ANSI A117.1 - Valve control only
- EPA WaterSense®

**Delta Faucet Company DS**

55 E. 111th Street, Indianapolis, IN 46280  
350 South Edgeware Road, St. Thomas, ON N5P 4M1  
© 2018 Delta Faucet Company

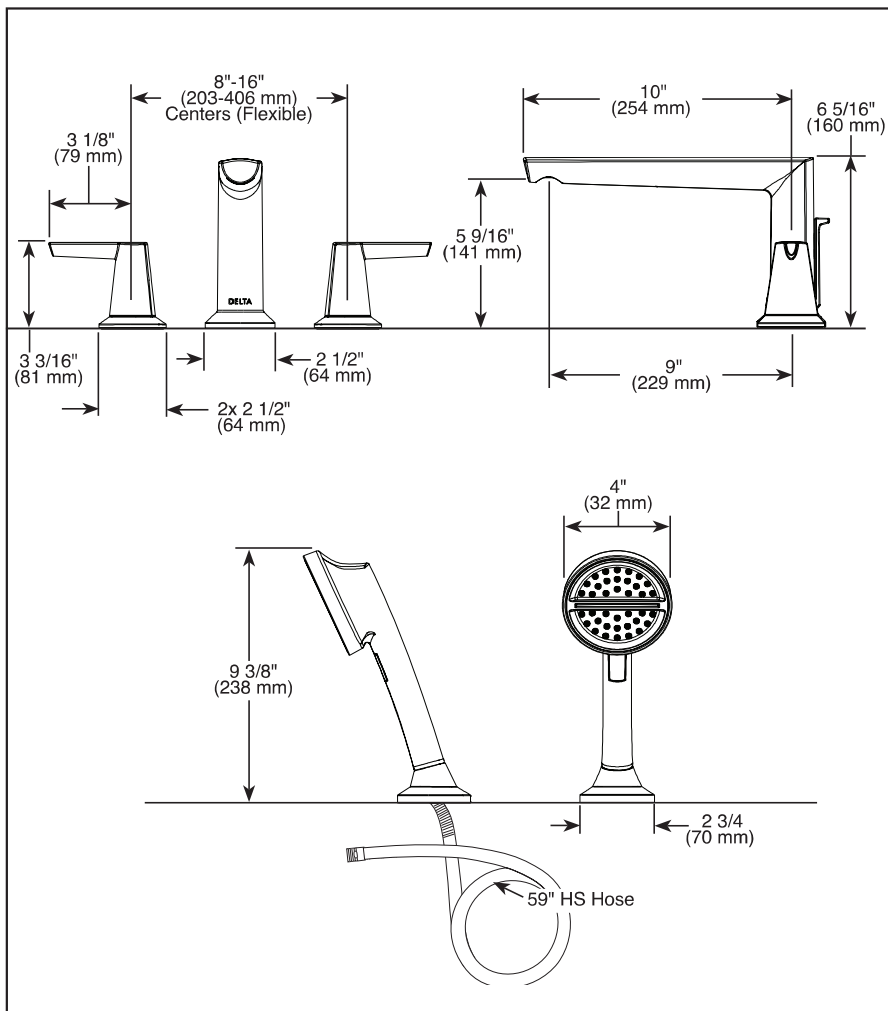
DS  
1/2





Submitted Model No.: \_\_\_\_\_

Specific Features: \_\_\_\_\_



▲ Designate proper finish suffix



see what Delta can do™

## ROMAN TUB/WHIRLPOOL FAUCET TRIM

- Galeon™ Bath Collection
- Three Hole Installation (T2771 Series)
- Four Hole Installation (T4771 Series)

### FEATURES:

- Lumicoat™ Finish (-PR models only)
- Lumicoat™ Finishes easily wipe clean without cleaners and chemicals on the products most commonly touched areas

### STANDARD SPECIFICATIONS:

- Temperature and volume controlled with handles
- Rough-In kit must also be ordered to complete installation
  - R4707 for four hole
  - R2700 or R2707 for three hole
  - RP23601 for three hole 10" fixed installation
 There are separate specification sheets on each rough-in kit if more details are required.
- Hand shower includes certified double check valves for backflow prevention (T4771)
- Hand shower max flow rate 1.75 gpm @ 80 psi, 6.6 L/min @ 550 kPa
- Hot/cold indicators

### WARRANTY

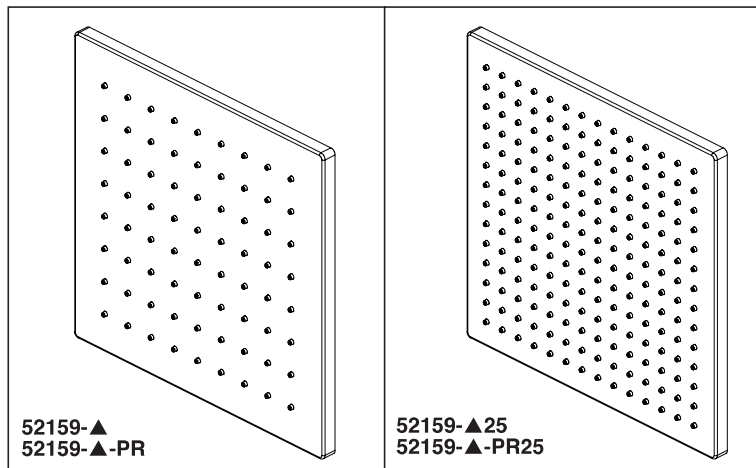
- Parts and Finish - Lifetime limited warranty; or for commercial purchasers, 10 years for multi-family residential (apartments and condominiums) and 5 years for all other commercial uses, in each case from the date of purchase.
- Electronic Parts and Batteries (if applicable) - 5 years from the date of purchase; or for commercial purchasers, 1 year from the date of purchase. No warranty is provided on batteries.



### COMPLIES WITH:

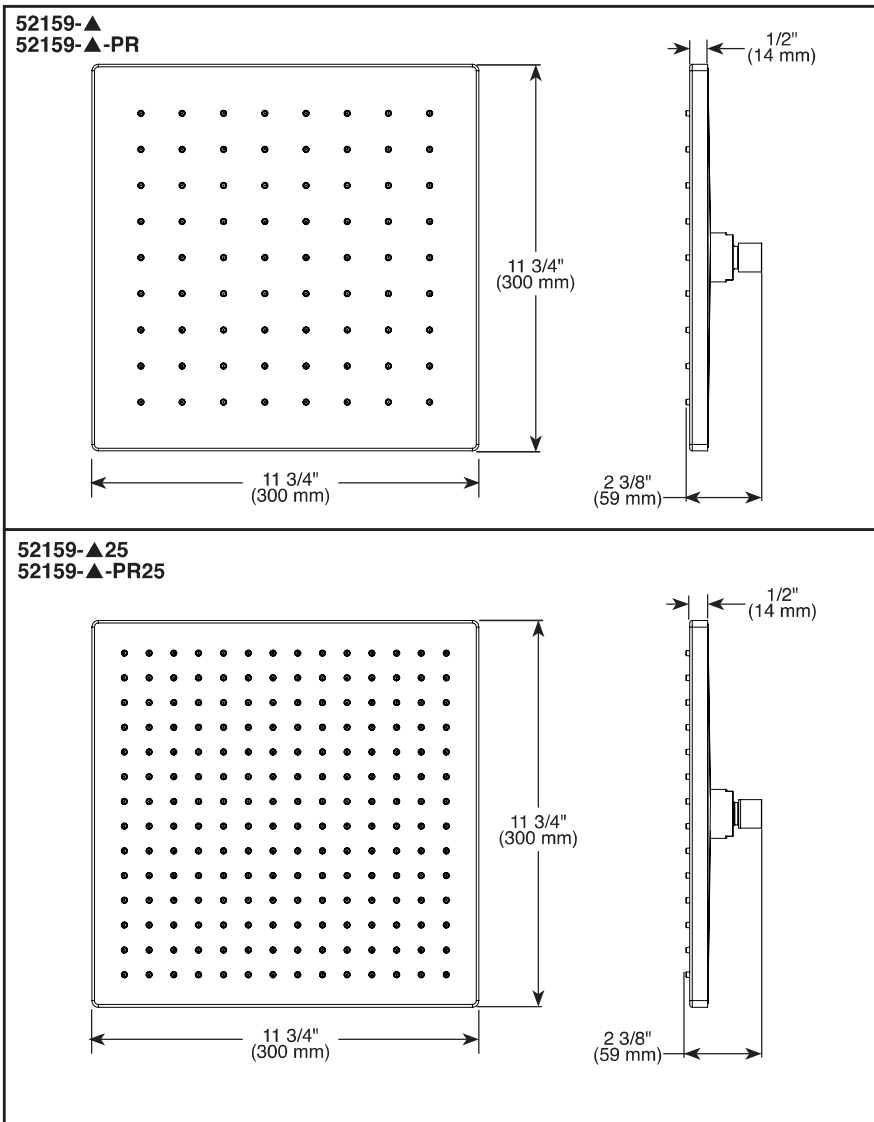
- ASME A112.18.1 / CSA B125.1
- Indicates compliance to ICC/ANSI A117.1 - Valve control only
- EPA WaterSense® - Applies to T4771▲ only





Submitted Model No.: \_\_\_\_\_

Specific Features: \_\_\_\_\_



▲ Designate proper finish suffix



see what Delta can do™

## RAINCAN SHOWER HEAD

### ■ Single-Setting Raincan Shower Head

#### FEATURES:

- Touch-Clean® Nozzles
- Lumicoat™ Finish (-PR models only)
- Lumicoat™ Finishes easily wipe clean without cleaners and chemicals on the products most commonly touched areas

#### STANDARD SPECIFICATIONS:

- Max flow rate 1.75 gpm @ 80 psi, 6.6 L/min @ 550 (52159▲)
- Max flow rate 2.5 gpm @ 80 psi, 9.5 L/min @ 550 k (52159▲-25)
- Metal ball connector for durability
- Ball connector swivel angle is 36° (18° per side)
- Standard 1/2"-14 NPT pipe fitting

#### WARRANTY

- Parts and Finish - Lifetime limited warranty; or for commercial purchasers, 10 years for multi-family residential (apartments and condominiums) and 5 years for all other commercial uses, in each case from the date of purchase.
- Electronic Parts and Batteries (if applicable) - 5 years from the date of purchase; or for commercial purchasers, 1 year from the date of purchase. No warranty is provided on batteries.



#### COMPLIES WITH:

- ASME A112.18.1 / CSA B125.1
- EPA WaterSense® - Applies to 52159-▲ and 52159-▲-PR only

Delta reserves the right (1) to make changes in specifications and materials, and (2) to change or discontinue models, both without notice or obligation. Dimensions are for reference only. See current full-line price book or [www.deltafaucet.com](http://www.deltafaucet.com) for finish options and product availability.

DSP-B-52159 Rev. B

Delta Faucet Company  
55 E. 111th Street, Indianapolis, IN 46280  
350 South Edgeware Road, St. Thomas, VI N5P 4L1  
© 2021 Delta Faucet Company



Submitted Model No.: \_\_\_\_\_

Specific Features: \_\_\_\_\_



see what Delta can do™

## SHOWER ARMS

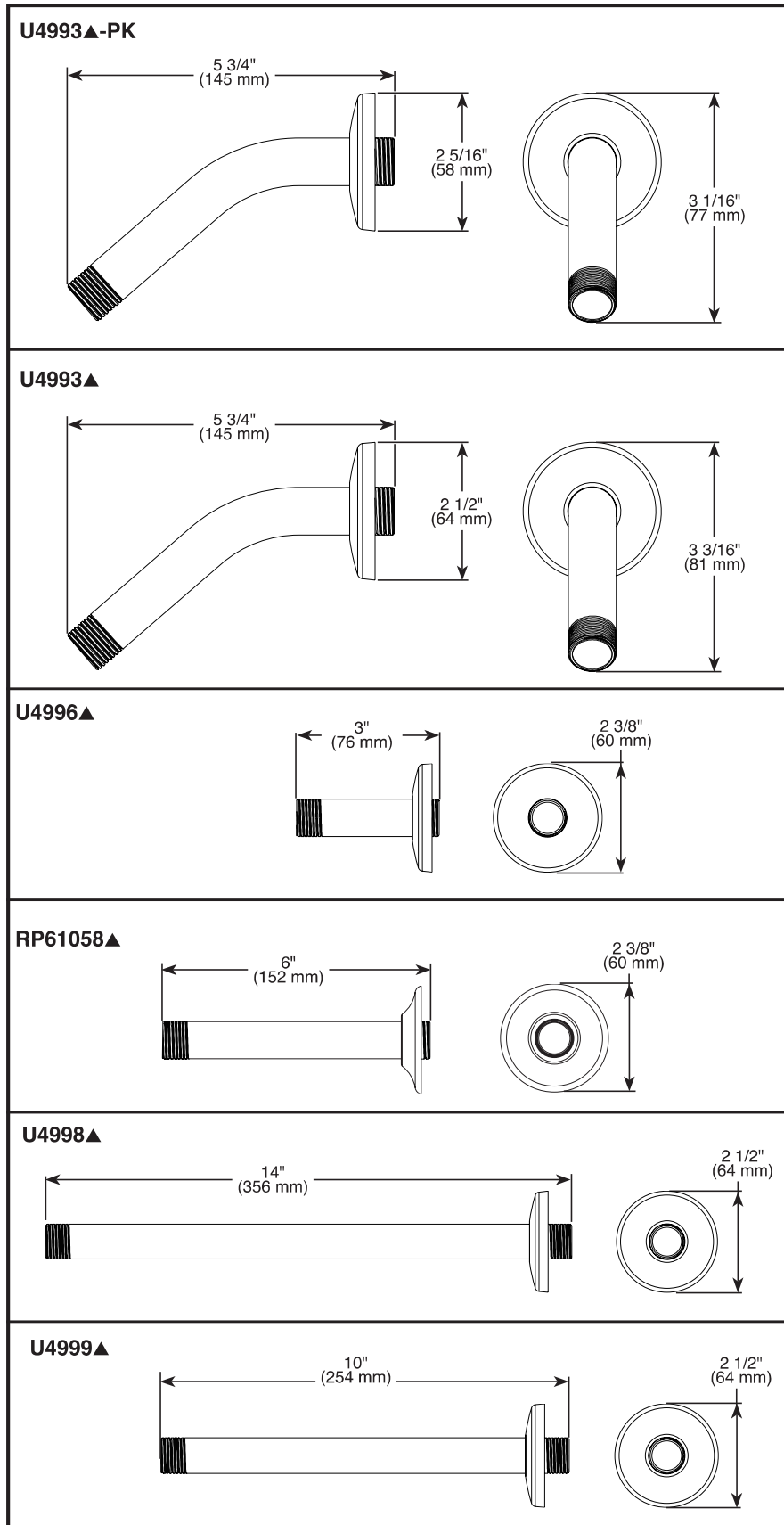
- Fixed Shower Arms
- Brass Construction

### FEATURES:

- Shower arms attach directly to water supply.
- Shower arm with flange.
- 1/2-14 NPT threads.

### WARRANTY

- Parts and Finish – Lifetime limited warranty; or for commercial purchasers, 10 years for multi-family residential (apartments and condominiums) and 5 years for all other commercial uses, in each case from the date of purchase.
- Electronic Parts and Batteries (if applicable) – 5 years from the date of purchase; or for commercial purchasers, 1 year from the date of purchase. No warranty is provided on batteries. No warranty is provided on batteries.



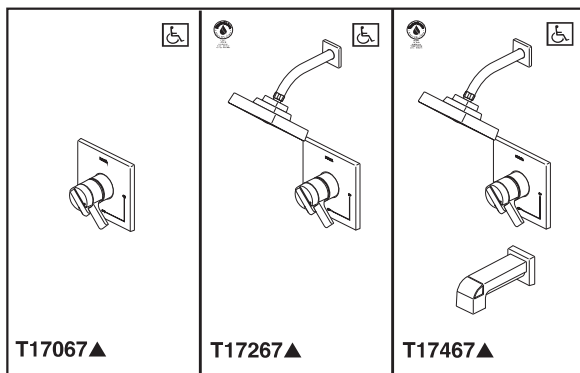
▲ Designate proper finish suffix

Delta reserves the right (1) to make changes in specifications and materials, and (2) to change or discontinue models, both without notice or obligation. Dimensions are for reference only. See current full-line price book or [www.deltafaucet.com](http://www.deltafaucet.com) for finish options and product availability.

DSP-B-U4993-PK Rev. D

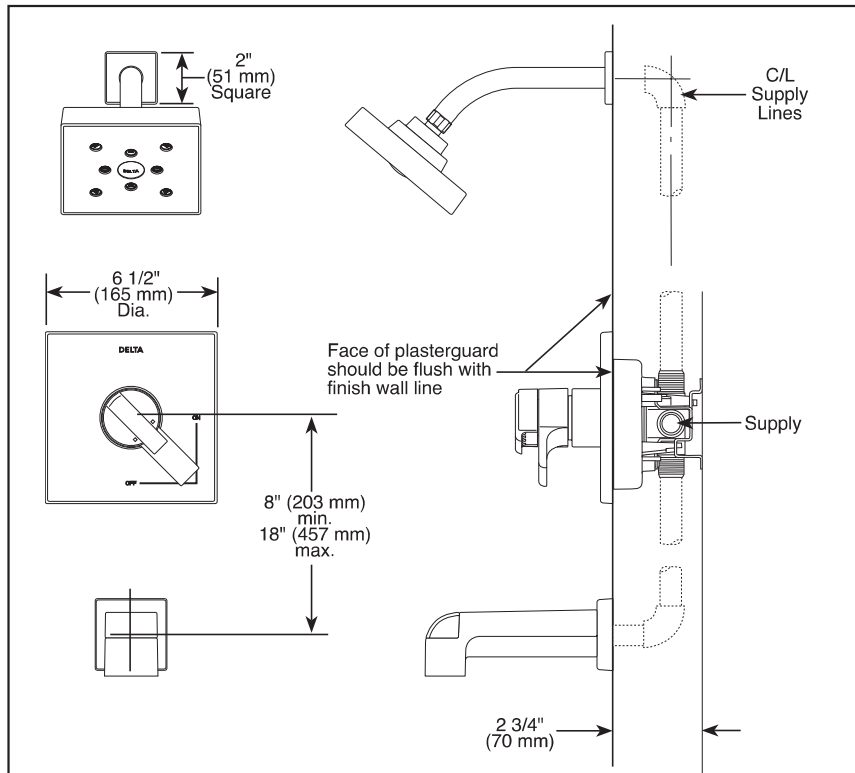
**Delta Faucet Company** DS  
 55 E. 111th Street, Indianapolis, IN 46280  
 350 South Edgeware Road, W. Thomas, CN 18384  
 © 2019 Delta Faucet Company



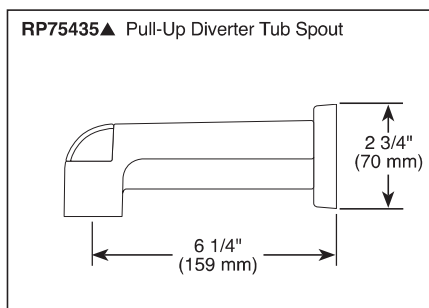
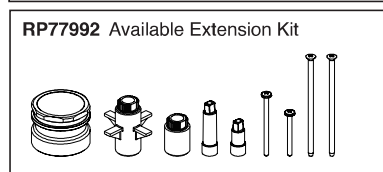
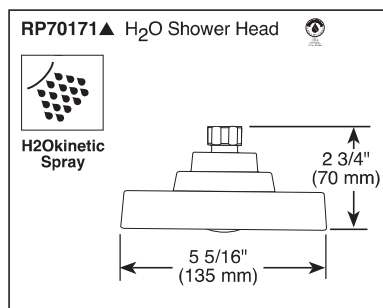


Submitted Model No.: \_\_\_\_\_

Specific Features: \_\_\_\_\_



▲ Designate Proper Finish Suffix



see what Delta can do™

## TUB AND SHOWER FAUCET TRIM

- Ara® Bath Collection
- Valve Only (T17067)
- Shower Only (T17267)
- Tub/Shower (T17467)

### FEATURES:

- Monitor® 17 Series pressure balanced bath mixing valve trim
- Single function H2Okinetic® Technology shower head

### STANDARD SPECIFICATIONS:

- Maintains a balanced pressure of hot and cold water even when a valve is turned on or off elsewhere in the system
- For use with MultiChoice® Universal rough valve body (R10000 Series)
- Back-to-back installation capability
- Solid brass forged body
- Lever volume control handle; temperature adjustment dial
- Field adjustable to limit handle rotation into hot water zone
- Maximum dial rotation adjustable between 90° and 180°
- All parts replaceable from the front of the valve
- 1.75 gpm @ 80 psi, 6.6 L/min @ 550 kPa
- Tub port maximum flow rate 6.2 gpm @ 60 psi with R10000-UNBX
- Shower arm overall horizontal length = 7" (178 mm), including threaded ends
- Red/blue indicator markings
- Stem extension kit RP77992 can be ordered to allow for an additional 1 3/4" wall thickness. RP77992 ships with chrome escutcheon screws. For special finishes also order RP12630 escutcheon screws in desired finish.

### WARRANTY

- Parts and Finish - Lifetime limited warranty; or for commercial purchasers, 10 years for multi-family residential (apartments and condominiums) and 5 years for all other commercial uses, in each case from the date of purchase.
- Electronic Parts and Batteries (if applicable) - 5 years from the date of purchase; or for commercial purchasers, 1 year from the date of purchase. No warranty is provided on batteries.

### COMPLIES WITH:

- ASME A112.18.1 / CSA B125.1
- ASSE 1016
- Indicates compliance to ICC/ANSI A117.1 - Valve control only
- EPA WaterSense®

Delta reserves the right (1) to make changes in specifications and materials, and (2) to change or discontinue models, both without notice or obligation. Dimensions are for reference only. See current full-line price book or [www.deltafaucet.com](http://www.deltafaucet.com) for finish options and product availability.

DSP-B-T17067 Rev. H

Delta Faucet Company DS  
55 E. 111th Street, Indianapolis, IN 46280  
350 South Edgeware Road, W. Troy, OH 45361  
© 2018 Delta Faucet Company