

LG REFRIGERATION

LFCC22426

23 cu.ft. Counter Depth 3-Door French Door Refrigerator

Smudge Resistant Finish

Automatic Ice Maker Installed

Door Cooling+

Glide N' Serve Pantry Drawer

SpillProtector™ Tempered Glass

Flat Duct Design

10 Year Warranty on Inverter Linear Compressor

SmartDiagnosis® System

ENERGY STAR® Qualified



CAPACITY

Refrigerator (cu.ft.)	15.5
Freezer (cu.ft.)	7.3
Total Capacity (cu.ft.)	22.8

ENERGY

Energy Consumption (kWh/Year)	595
ENERGY STAR® Qualified	Yes

WATER & ICE SYSTEM

Automatic Ice Maker	Installed
Water Filter	LT1000P

COOLING

Inverter Linear Compressor	Yes
Multi-Air Flow	Yes
Temperature Sensors	5

CONVENIENCE

Display Type	Membrane / White LED
Temperature Controls	Electronic/Digital
Auto Closing Door Hinge	Yes
LoDecibel™ Quiet Operation	Yes

REFRIGERATOR

No. of Shelves	4 Split
Cantilevered Shelves	Hybrid Cantilevered
Shelf Construction	Spill Protector™ Tempered Glass
Crisper Bins	2 Humidity Crispers
Glide N' Serve Pantry Drawer	Yes
Refrigerator Light	Ceiling LED

REFRIGERATOR DOOR

No. of Bins	6 Total (2 Adjustable Gallon Sized)
Door Bin Construction	1 Piece (Clear)
Door Cooling+	Yes

FREEZER

Door Type	Pull Drawer
Drawers	2-Tier Organization
Drawer Divider	Yes
Freezer Light	LED Lighting
Freezer Handle	SmartPull™ Handle

MATERIALS AND FINISHES

Contour Door	Yes
Hidden Hinges	Yes
Smudge Resistant Finish	Yes
Handles	Matching Commercial
Available Colours	Smudge Resistant Stainless Steel

DIMENSIONS/CLEARANCES/WEIGHTS

Depth with Handles	31 1/4"
Depth without Handles	28 3/4"
Depth without Door	24 3/4"
Depth (Total with Door Open)	43 1/2"
Height to Top of Case	68 3/8"
Height to Top of Door Hinge	69 3/4"
Width	35 3/4"
Width (Door Open 90° with Handle)	44 1/4"
Width (Door Open 90° without Handle)	39 1/4"
Door Edge Clearance with Handle	4 1/2"
Door Edge Clearance without Handle	1 3/4"
Installation Clearance	Sides 1/8", Top 1", Back 2"
Weight (Unit/Carton)	259 lbs. / 289 lbs.
Carton Dimensions (WxHxD)	38" x 73" x 37"

LIMITED WARRANTY

Parts & Labour	1 Year
Sealed System	7 Years
Inverter Linear Compressor	10 Years

UPC CODES

LFCC22426 (Smudge Resistant Stainless Steel)	048231797252
--	--------------

DV2- Lot 12

LG DISHWASHERS

LDT5678_

Top Control Wi-Fi Enabled Dishwasher
with QuadWash® and 3rd Rack

QuadWash®

Smudge Resistant Finish

SmartThinQ® Wi-Fi Connectivity

3rd Rack

EasyRack™ Plus System

Stainless Steel Tub

Inverter Direct Drive™ Motor

LoDecibel™ Quiet Operation (46 dBA)

ENERGY STAR® Qualified



Enjoy new ways to control your
home with LG smart appliances

- Get notifications when dishes are clean
- Monitor the cycle time from your smartphone
- Works with the LG SmartThinQ® app

SmartThinQ®



CAPACITY

Total Place Settings	15
Upper Rack Dish Height Limit	7.1"
Lower Rack Dish Height Limit	12.5"

RACKS AND BASKETS

Cutlery Baskets	Yes
Cup Rack	Yes
Fold Down Tines	Yes (Half Upper & Lower)
BPA-Free Nylon Coated Racks and Tines	Yes
Rack Handle	Yes (Upper)
EasyRack™ Plus System	Yes
Height Adjustable Upper Rack	Yes
3rd Rack	Yes

STYLE AND DESIGN

Control Panel Location	Top Control
Electronic Controls	Fully Integrated Control Panel
Tub Material	NeveRust™ Stainless Steel
Handle	Bar Handle
Available Finishes	Smudge Resistant Stainless Steel, Black Stainless Steel

FEATURES

QuadWash®	Yes
Inverter Direct Drive Motor	Yes
LoDecibel™ Quiet Operation	46 dBA
Number of Wash Cycles	9 (Auto, Heavy, Delicate, Normal, Turbo, Download Cycle, Machine Clean, Rinse, Express)
Number of Options	8 (Dual Zone, Half Load, Energy Saver, High Temp, Extra Dry, Delay Start, Control Lock, Night Dry)
Number of Spray Arms	3 (Top, Upper, Lower)
SenseClean™ Wash System	Yes
Vario Wash	Yes
Detergent and Rinse-Aid Dispenser	Yes
Hybrid Condensing Drying System	Yes
End of Cycle Indicator	Yes (Beeper + END indication on display)
Hidden Water Heater	Yes
Safety Float Switch (Leaks)	Yes
Soil (Turbidity) Sensor	Yes



Tub Insulation (Damping Sheet, Sound Absorbing Material (felt), Base)	Yes
BPA-Free Nylon Coated Racks and Tines	Yes
Anti-Bacterial Treatment (Sump, Inner / Outer filter, Drain pump case, Drain hose)	Yes
Balanced Door	Yes
3-Stage Filtration System	Yes

SmartThinQ® SMART FEATURES

Wi-Fi Enabled	Yes
Voice Activation	Yes
Works with	Google Assistant and Amazon Alexa
SmartDiagnosis™	Yes

POWER RATINGS

ENERGY STAR® Qualified	Yes
CEE Tier	1
Energy Use (kWh/Year)	258 kWh/Year
Water Factor (WF)	2.8

DIMENSIONS / CLEARANCES / WEIGHT

Product Dimensions (in) (W x H x D)	23.75" x 33.6" x 24.6"
Product Weight (lbs)	79.6 lbs
Depth with Door Closed with Handle (in)	24.6"
Depth with Door Open (in)	50.5"
Carton Dimensions (in) (W x H x D)	28" x 34.7" x 29.6"
Shipping Weight with Carton (lbs)	91.7 lbs

LIMITED WARRANTY

Labour	1 Year
Parts	1 Year
Control Board, rack, stainless steel door liner and tub	5 Years
Inverter Direct Drive Motor	10 Years

UPC CODES

LDT5678SS (Smudge Resistant Stainless Steel)	048231341301
LDT5678BD (Black Stainless Steel)	772454071867

DV2- Lot 12

LG DISHWASHERS

LDT5678_

Top Control Wi-Fi Enabled Dishwasher
with QuadWash® and 3rd Rack

QUICK INSTALL & CLEARANCES

For full installation directions/clearances please refer to the corresponding User Manual and Installation Guide.

DIMENSIONS / CLEARANCES / WEIGHT

Product Dimensions (in) (W x H x D)	23 3/4" x 33 5/8" x 24 5/8"
Depth with Door Closed with Handle (in)	24 3/5"
Depth with Door Open (in)	50 1/2"
Carton Dimensions (in) (W x H x D)	28" x 34 3/4" x 29 5/8"

POWER RATINGS

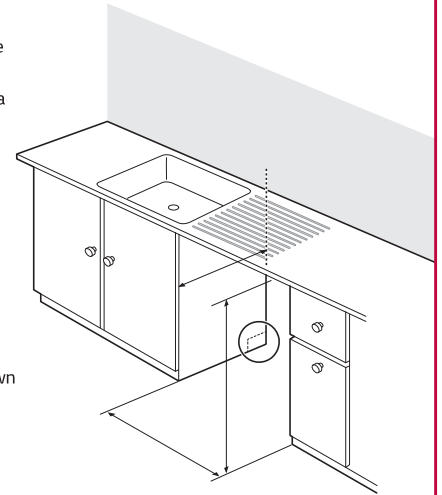
ENERGY STAR® Qualified	Yes
CEE Tier	1
Energy Use (kWh/Year)	258 kWh/Year
Water Factor (WF)	2.8

DV2- Lot 12



PREPARING CABINET OPENING

- This dishwasher is designed to fit a standard dishwasher opening. An opening may be needed on both sides to route plumbing and electrical connections.
- Select a location as close to the sink as possible for easy connections to water and drain lines.
- To ensure proper drainage, install the dishwasher no more than 12 ft. from the sink.
- If installing the dishwasher in a corner, leave a minimum of 2" between the dishwasher and the adjacent wall.
- To allow for proper clearance of plumbing and electrical, use the template included with the literature to determine the clearance on the side of the cabinet where the cabinet meets the back wall. Using a 2 1/2" diameter hole saw, drill a hole in the target area as shown on the template.



⚠ WARNING

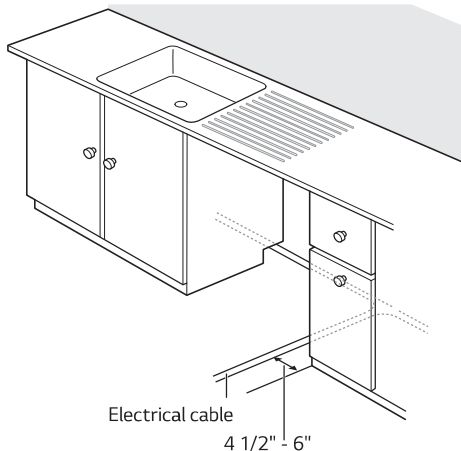
Don't use existing holes unless they are in the target area. Otherwise, the water supply and drain hose may be damaged by being crushed or kinked.

⚠ CAUTION

Failure to properly locate the hole for the water and drain lines may prevent the dishwasher from installing flush with the cabinets and could result in kinked or damaged lines. Installation damage is not covered by the warranty, and leaks caused by improper installation may result in property damage.

PREPARING ELECTRICAL WIRING

- Operate this appliance with the correct voltage as shown in your User Manual and on the rating plate. Connect it to a dedicated, properly grounded branch circuit which is protected by a time delay fuse. Connect the appliance using 3-wires, including a ground wire.
- If an outlet and other power connector are used, it should be in an accessible location adjacent to and not behind the dishwasher and within 4 ft. of the dishwasher's side.
- The wiring must be grounded properly. If in doubt, have it checked by a qualified electrician. Do not connect any other appliance to the same outlet.
- Route the wiring.
- Make sure the electrical cable is oriented in the right side channel.

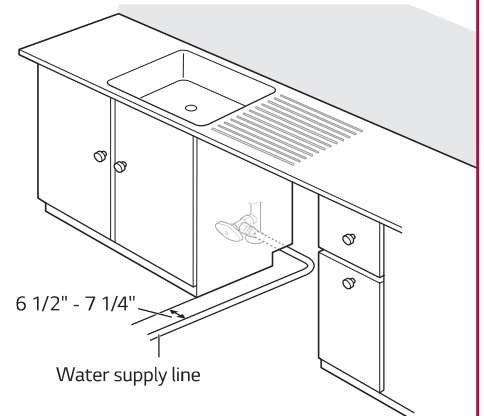


⚠ WARNING

- For personal safety, remove house fuse or open circuit breaker before installation.
- Do not use an extension cable or adapter with this dishwasher
- If you find any damage to the dishwasher, contact your retailer or contractor.

PREPARING WATER SUPPLY CONNECTION

- Make sure the house water supply is turned off before connecting the dishwasher water lines.
- Connect the dishwasher to a hot water supply with a temperature range between 120 °F (49 °C) and 149 °F (65 °C). This temperature range provides the best washing results and shortest cycle time. To prevent damage to dishes, the temperature should not exceed 149 °F (65 °C).
- When connecting the dishwasher water line, sealing tape or compound should be used on pipe threads to avoid leaks. Tape or compound should not be used on compression fittings.
- The water supply tube must be located in the left side channel.



NOTE

Use new hoses when connecting to the water supply. Do not reuse old hoses.

LG LAUNDRY

WT7150CW

5.0 cu. ft. Rear Control Top Load Washer

5.0 cu. ft. Mega Capacity

TurboDrum™ Technology

6Motion™ Technology

SmartDiagnosis™

Water Plus

ColdWash™ Technology

Direct Drive Motor 10-Year Limited Warranty

ENERGY STAR® Certified

SlamProof™ Glass Lid

TrueBalance™ Anti-Vibration System & LoDecibel™

Quiet Operation

SpeedWash™ Cycle



AVAILABLE COLORS



WHITE



SUMMARY	
Energy Star Qualified	Yes
Capacity (cu.ft.)	5.0 cu. ft.
Matching Electric Dryer	DLE7150W
Matching Gas Dryer	DLG7151W
Color	White (W)
CAPACITY	
Capacity	5.0 cu. ft.
APPEARANCE	
Intelligent Electronic Controls with Dual LED Display	Yes
Touch Buttons	Yes
Electronic Control Panel with LED Display	Yes
Dial-A-Cycle™	Yes
ENERGY	
ENERGY STAR® Qualified	Yes
IMEF	2.06
IWF	4.3
WASH PROGRAMS	
No. of Programs	8
Wash Programs	Deep Wash, Normal, Bedding, Heavy Duty, Speed Wash, Delicates, Waterproof, Tub Clean
WASH OPTIONS	
No. of Options	9
Options	Soak, Extra Rinse, Delay Wash, Control Lock, Water Plus, Cold Wash, Signal, Rinse+Spin, Spin Only

WASH DETAILS	
No. of Wash/Rinse Temps	3
Wash/Rinse Temps	Hot, Warm, Cold
No. of Spin Speeds	3
Spin Speeds	High, Medium, Low
No. of Water Levels	Automatically adjusts to the size of load
No. of Soil Levels	3
FABRIC CARE FEATURES	
SmartRinse™ Jet Spray System	Yes
ColdWash™ Option	Yes
SenseClean™ System	Yes
CONVENIENCE FEATURES	
SlamProof™ Lid	Yes
TrueBalance™ Anti-Vibration System	Yes
SmartDiagnosis™	Yes
3-Tray Dispenser	Yes
LoadSense	Yes
Status Indicator(s)	Yes
End of Cycle Signal	Yes
Child Lock	Yes
Auto Suds Removal	Yes
Forced Drain System	Yes
Add Garment Indicator	Yes
Leveling Legs	Yes

MOTOR AND AGITATOR	
Motor Type	Inverter Direct Drive Motor
Max RPM	800
Axis	Vertical
MATERIALS AND FINISHES	
Stainless Steel Drum	Yes
Cabinet	Painted Steel
All Available Colors	White (W)
Lid	White - Transparent Glass
POWER SOURCE	
Ratings	CSA Listed
Electrical Requirements	120V @ 60Hz.
DIMENSIONS	
Product (WxHxD)	27 5/8" x 44 1/2" x 28 3/8" (57 1/5" H with lid open)
Carton (WxHxD)	29" x 46 3/8" x 31 3/8"
Weight (Product)	127 lbs
Weight (Carton)	147 lbs
LIMITED WARRANTY	
Parts and Labor	1 Year
Direct Drive Motor	10 Years
Drum	3 Years
UPC CODES	
WT7150CW (White)	048231028431
DLE7150W (White)	048231028448
DLG7151W (White)	048231028455

DV2- Lot 12

WT7150CW

5.0 cu. ft. Rear Control Top Load Washer

QUICK INSTALL & CLEARANCES

For full installation directions/clearances please refer to the corresponding User Manual and Installation Guide.

DIMENSIONS/CLEARANCES/WEIGHTS

A Width	27 5/8"
B Height	44 1/2"
C Depth	28 3/8"
D Height with lid open	57 1/5"
Carton Dimensions (WxHxD)	29" x 46 3/8" x 31 3/8"

ENERGY / RATINGS

ENERGY STAR® Qualified	Yes
IMEF	2.06
IWF	4.3
Ratings	CSA Listed
Electrical Requirements	120V @ 60Hz.

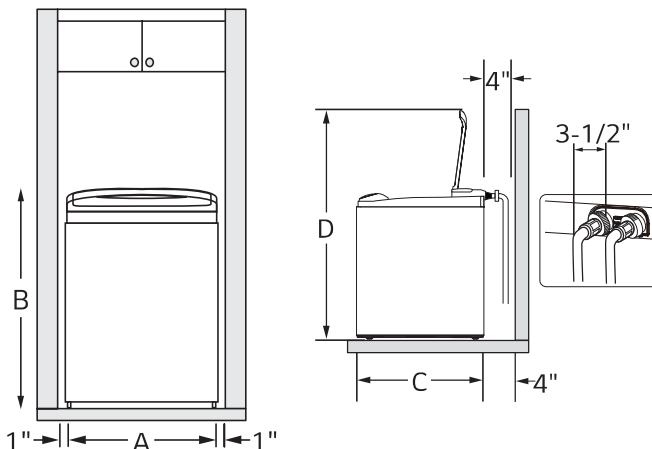
ELECTRICAL REQUIREMENTS

- The washer should be plugged into a 120-VAC, 60-Hz grounded 3-prong outlet. Plug in the washer. Improper connection of the equipment-grounding conductor can result in risk of electric shock. Check with a qualified electrician or service technician if you are in doubt as to whether the appliance is properly grounded. Do not modify the plug provided with the appliance. If it does not fit the outlet, have a proper outlet installed by a qualified electrician. Failure to follow these warnings can cause serious injury, fire, electrical shock, or death.
- The power outlet must be within 60 inches (1.5 m) of either side of the washer.
- The appliance and outlet must be positioned so that the plug is easily accessible.
- Do not overload the outlet with more than one appliance.
- The outlet must be grounded in accordance with current wiring codes and regulations.
- Time-delay fuse or circuit breaker is recommended.
- It is the personal responsibility and obligation of the product owner to have a proper outlet installed by a qualified electrician.



DV2- Lot 12

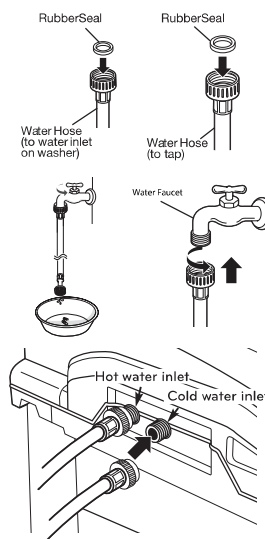
DIMENSIONS AND CLEARANCES



- To ensure sufficient clearance for water lines and airflow, allow minimum clearances of at least 1 in. (2.5 cm) at the sides and 4 in. (10 cm) behind the unit. Be sure to allow for wall, door, or floor moldings that may increase the required clearances.

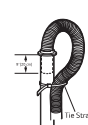
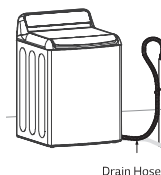
CONNECTING THE WATER LINES

- LG recommends the use of LG hoses. Any leaking, property damage, or damage to the washing machine caused by an improper installation or by the use of non-LG hoses is not covered under the terms of the LG warranty and is the sole responsibility of the customer and/or an installer.
- Water supply pressure must be between 20 psi and 120 psi (138-827 kPa). If the water supply pressure is more than 120 psi, a pressure reducing valve must be installed.
- Inspect the threaded fitting on each hose and make sure there is a rubber seal in place in both ends of each hose.
- Connect the water supply hoses to the HOT and COLD water faucets tightly by hand and then tighten another 2/3 turn with pliers.
- Always run a gallon or two of water through each inlet hose to flush dirt, scale and other debris out of the water lines. Doing so will help prevent future problems with clogged filter screens, and will also allow you to verify which water line is hot and which is cold.
- Attach the hot water line to the hot water inlet on the back of the washer. Attach the cold water line to the cold water inlet on the back of the washer. Tighten the fittings securely. Turn ON both faucets all the way and check for leaks at both ends of the hoses.



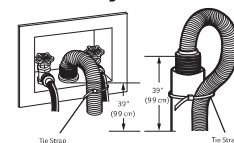
CONNECTING THE DRAIN HOSE

- The drain hose should always be properly secured. Failure to properly secure the drain hose can result in flooding and property damage.
- The drain must be installed in accordance with any applicable local codes and regulations.
- Make sure that the drain hose is not stretched, pinched, crushed, or kinked.
- Normal height of the end of the hose should be approximately 35"-47" (0.9-1.2 m) from the floor.
- Do not install the end of the drain hose lower than 29 in. (73.7 cm) or higher than 96 in. (243.8 cm) above the bottom of the washer or more than 60 in. (152.4 cm) away from the washer.
- Never create an airtight seal between the hose and the drain with tape or other means. If no air gap is present, water can be siphoned out of the tub resulting in poor wash/rinse performance or clothing damage.



STANDPIPE Option

- Do not insert the end of the drain hose into the standpipe more than 8 inches (20cm). **Doing so can cause siphoning, odors, or improper draining.**



LAUNDRY TUB Option

- Do not use this drain hose with a floor drain. The end of the drain hose must be at least 29 inches above the floor for proper draining to occur.

LG LAUNDRY

DLE7150W

7.3 cu.ft. Capacity Electric Dryer

Sensor Dry

Aluminized Alloy Steel Drum

SmartDiagnosis™

ENERGY STAR® Qualified

FlowSense™ Duct Clogging Indicator



CAPACITY	
Capacity (cu.ft.)	7.4
APPEARANCE	
Design Look	Rear Control
Intelligent Electronic Controls with LED Display	•
Touch Buttons	•
Dial-A-Cycle™	•
ENERGY	
ENERGY STAR® Qualified	•
CEF	3.94
DRYER PROGRAMS	
No. of Programs - 8	Normal, Perm Press, Heavy Duty, Bedding, Delicates, Speed Dry, Air Dry, Freshen Up
No. of Options - 6	Wrinkle Care, Control Lock, More Time, Less Time, Damp Dry Signal, Energy Saver
Temperature Settings	3 High, Medium, Low
Drying Levels	3 Very Dry, Normal Dry, Damp Dry
Manual Dry Times	60 min, 40 min, 20 min, More-Less
FABRIC CARE FEATURES	
Sensor Dry	•
Precise Temperature Control and Variable Heater	•
CONVENIENCE FEATURES	
3 Minute Installation Check	•
LoDecibel™ Quiet Operation	•
End of Cycle Signal	•
Reversible Door	•
FlowSense™ Duct Clogging Indicator	•
Wrinkle Care Option	•
Control Lock	•
Venting Option	Electric: 4 Way Venting
Leveling Legs	4 Adjustable Legs
Remaining Time Display/Status Indicator(s)	•

ThinQ® TECHNOLOGY

SmartDiagnosis™ (v3.0)

MATERIALS AND FINISHES

Aluminized Alloy Steel Drum

Tub	Painted
Cabinet	Painted Steel
Door/Trim	Solid / White
All Available Colours	White

POWER SOURCE

Ratings	CSA Listed
Electrical Requirements	240V, 30 Amps
Type	Electric
BTU	10,000 ft.

DIMENSIONS

Product (WxHxD)	27" x 44 1/2" x 29 1/2" (50 1/4" D with door open)
Carton (WxHxD)	29 1/2" x 47 1/8" x 30 31/32"
Weight (Product/Carton)	114.9 lbs / 134.7 lbs

LIMITED WARRANTY

Parts and Labour	1 Year
Drum	3 Years

UPC CODES

WT7150CW	048231028431
DLE7150W	772454074165

DV2- Lot 12

LG COOKING

LREL6323

6.3 cu. ft. Smart Wi-Fi Enabled Fan Convection Electric Range with Air Fry & EasyClean®

6.3 cu. ft. Large Capacity

Built-In Air Fry with Fan Convection

EasyClean® + Self Clean

ThinQ® Technology with Proactive Customer Care

AVAILABLE COLORS



STAINLESS STEEL



PRINTPROOF™ BLACK STAINLESS STEEL

LG ThinQ

Enjoy new ways to control your home with LG smart appliances

- Install Setup Quick Check
- Preventative Alerts & Guidance
- Performance & Usage Reports



SUMMARY		OVEN		SMART FEATURES	
Cooktop Type	Radiant, Ceramic Glass	Oven Type	Single Oven	Wi-Fi Connect	Yes
Number of Cooktop Burners	5	Oven Cooking System	Fan Convection	Proactive Customer Care	Yes
Oven Type	Single Oven	Convection Conversion Auto-Adjust	Yes	Smart Diagnosis™	Yes
Oven Cooking System	Fan Convection	Oven Cleaning Type	EasyClean® + Self Clean	Works with	LG ThinQ®
Oven Capacity (cu. ft.)	6.3	Self-Clean Oven Door Lock	Automatic		Amazon Alexa
Oven Cleaning Type	EasyClean® + Self Clean	Oven Capacity (cu. ft.)	6.3		Google Assistant
Drawer Type	Storage	Broiler Element Power	4200W	SIDECHIEF	
Size in Width (in.)	30	Bake Element Power	3400W		
APPEARANCE		Hidden Bake Element	Yes	POWER/RATINGS	
Color	Stainless Steel, PrintProof™ Black Stainless Steel	Number of Rack Positions	7	Amp Rating at 208V	46.6
Control Type	Touchpad	Number of Oven Racks	2	Amp Rating at 240V	53.8
Knobs	Stainless Steel Appearance, Weighted	Oven Rack Type	2 Standard	KW Rating at 208V	9.7
Oven Door Feature	WideView™ Window	Drawer Type	Storage	KW Rating at 240V	12.9
Cooktop Finish	Ceramic Glass, Stainless Steel	Oven Modes	Bake, Broil, Air Fry, Easy&Self Clean, Convection Bake, Convection Roast, Warm	Required Power Supply Amp	40
COOKTOP		Oven Light Type	Halogen	DIMENSIONS & WEIGHT	
Cooktop Type	Radiant, Ceramic Glass	CONTROL FEATURES		Cabinet Width (in.)	30
Number of Cooktop Burners	5	Kitchen Timer	Yes	Overall Depth (in.) - including handle	28 7/8"
Element/Burner - Left Front	9" / 6" Dual, 3200W UltraHeat™	Timed Cook	Yes	Overall Height (in.)	46 1/2"
Element/Burner - Left Rear	6" Single, 1200W	Oven Control Lock	Yes	Overall Width (in.)	29 7/8"
Element/Burner - Right Front	12" / 9" Dual, 3000W	Door Lock	Yes	Product Weight (lb)	157
Element/Burner - Right Rear	6" Single, 1200W	Sabbath Mode	Yes	Shipping Weight (lb)	181
Element/Burner - Center	7" Single, 100W Warming Zone			Shipping Dimensions (W x H x D) (in.)	32 1/2" x 51" x 30 1/2"
Hot Surface Indicator Light	Yes			UPC CODES	
				LREL6323S (Stainless Steel)	048231341431
				LREL6323D (PrintProof™ Black Stainless Steel)	048231341448

DV2- Lot 12