

City of Ottawa

Building Services Branch

REVIEWED

By Nicholas Winn at 10:20 am, Sep 01, 2021

Building Code Reviewed

Signature

6X6 P.T. POST BOLTED TO METAL SHOE  
SET INTO 10" DIA. CONC. PIER (TO  
EXTEND 6" ABV FINISHED GRADE) OVER  
24"x24"x8" CONC. PAD W/1-15M  
DOWEL INTO SONOTUBE FOR PIER  
(MIN. 66" BELOW GRADE)

COVERED REAR  
DECK ADDED

1 PARTIAL FOUNDATION PLAN

1 scale: 3/16"=1'-0"

TO BE READ IN CONJUNCTION WITH MASTER FOOTPRINTED PLANS

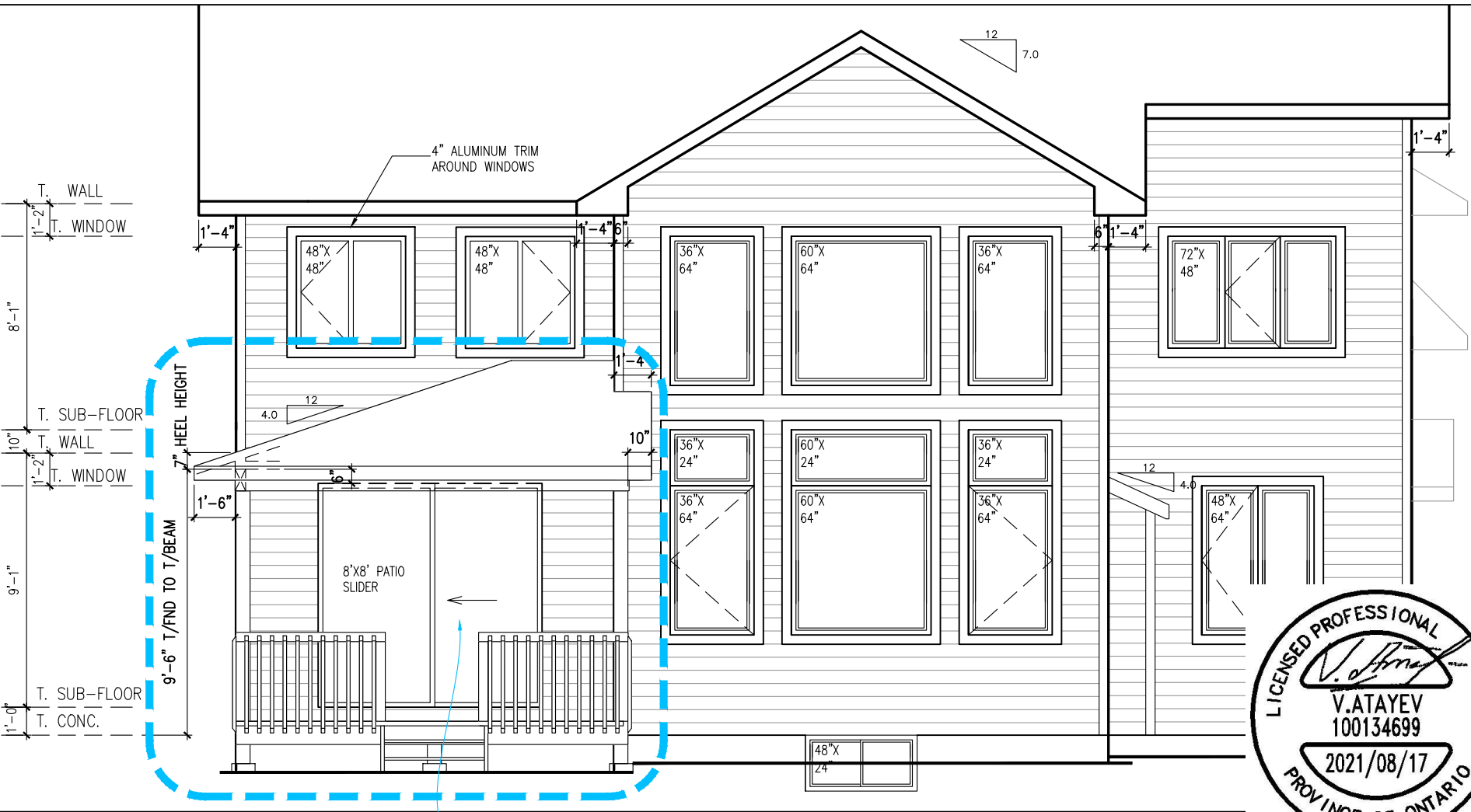
REVIEWED FOR MARKED CHANGE ONLY

-COVERED REAR DECK ADDED  
-PATIO SLIDER INCREASED TO  
8'W X 8'H

GREAT ROOM  
16'8X20'7"

2 PARTIAL GROUND FLOOR PLAN

1 scale: 3/16"=1'-0"



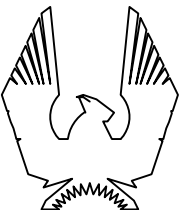
3 PARTIAL REAR ELEVATION

1 scale: 3/16"=1'-0"

-COVERED REAR DECK ADDED  
-PATIO SLIDER INCREASED TO  
8'W X 8'H



Structural Review Only.



PHOENIX HOMES

NEWINGTON - 2018

SITE: DIAMONDVIEW ESTATES

LOT NUMBER:

2-17

CIVIC ADDRESS:  
1967 CESSNA PRIVATE

2 ENGINEER MARKUPS APPLIED

16/08/21

CB

1 COVERED DECK, MUDROOM, ENTRY REVISIONS

09/08/21

CB

No. Description  
REVISIONS

dd/mm/yy  
By

footprint: 518

drawn by: SP

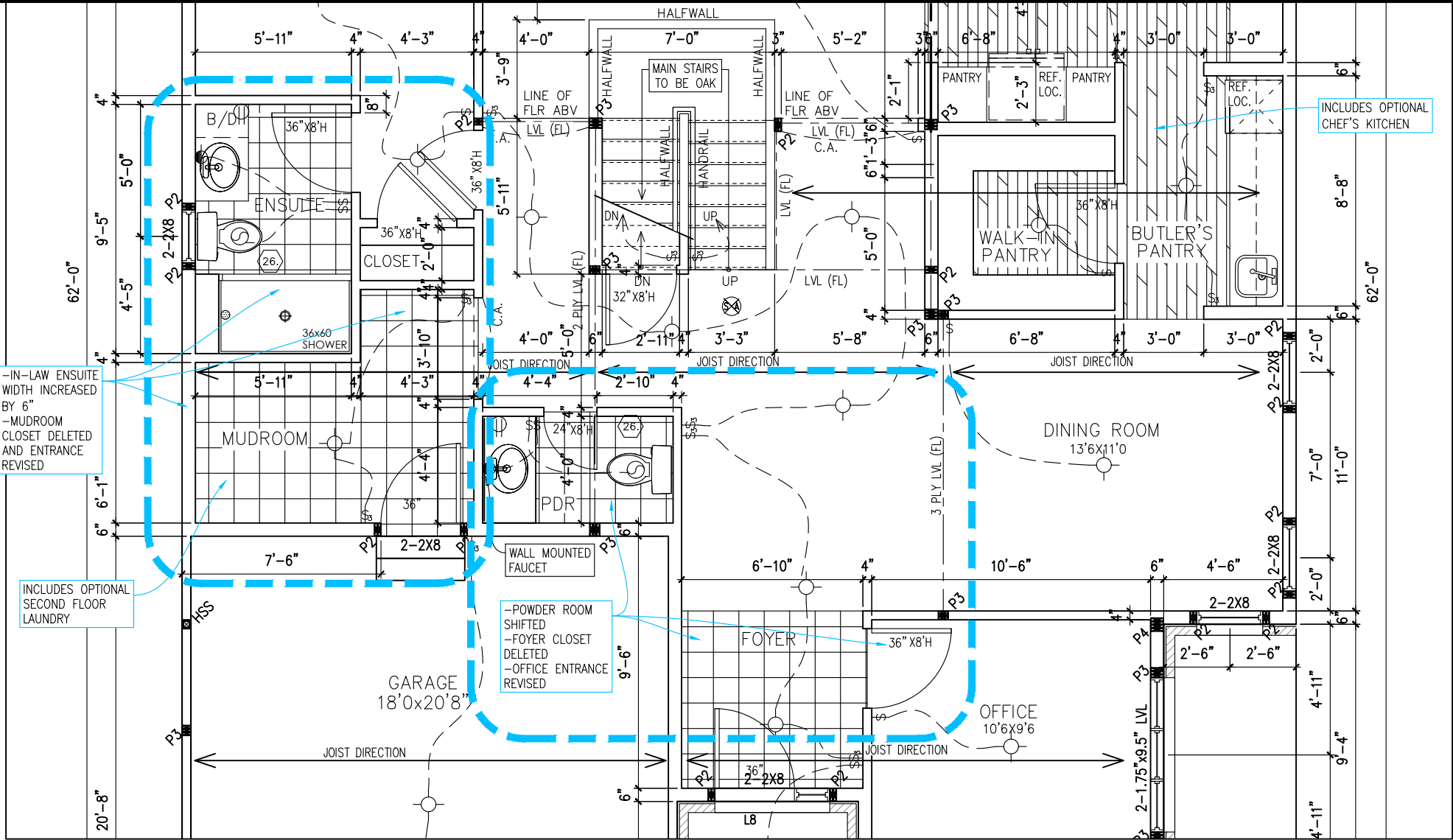
date: JUN 12/16

scale: 3/16"=1'-0"

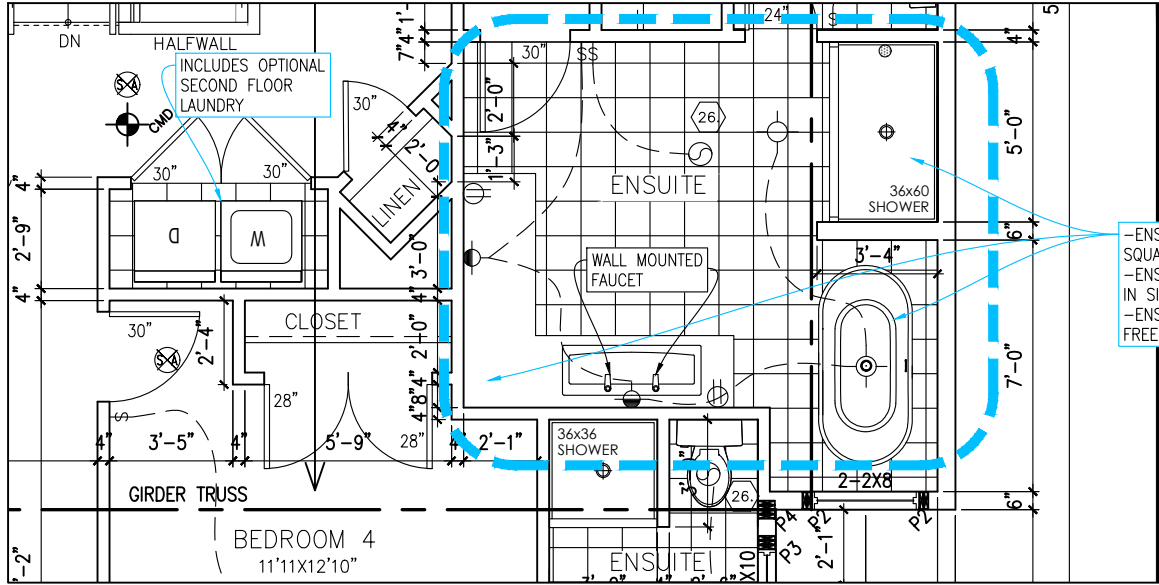
sheet no:

1

2



1 PARTIAL GROUND FLOOR PLAN  
2 scale: 3/16"=1'-0"



2 PARTIAL REAR ELEVATION  
2 scale: 3/16"=1'-0"

City of Ottawa

Building Services Branch

REVIEWED

By Nicholas Winn at 10:20 am, Sep 01, 2021

Building Code Reviewed

Signature

TO BE READ IN CONJUNCTION WITH MASTER FOOTPRINTED PLANS  
REVIEWED FOR MARKED CHANGE ONLY

PHOENIX HOMES

NEWINGTON – 2018

SITE: DIAMONDVIEW ESTATES

LOT NUMBER: 2-17

CIVIC ADDRESS: 1967 CESSNA PRIVATE

2	ENGINEER MARKUPS APPLIED	16/08/21	CB
1	COVERED DECK, MUDROOM, ENTRY REVISIONS	09/08/21	CB
No.	Description	dd/mm/yy	By
REVISIONS			

footprint: 518

drawn by: SP

date: JUN 12/16

scale: 3/16"=1'-0"

sheet no: 2