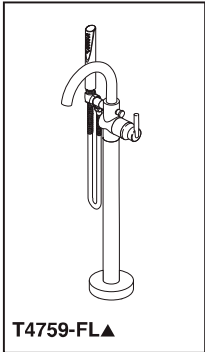


FIREPLACE REFERENCE



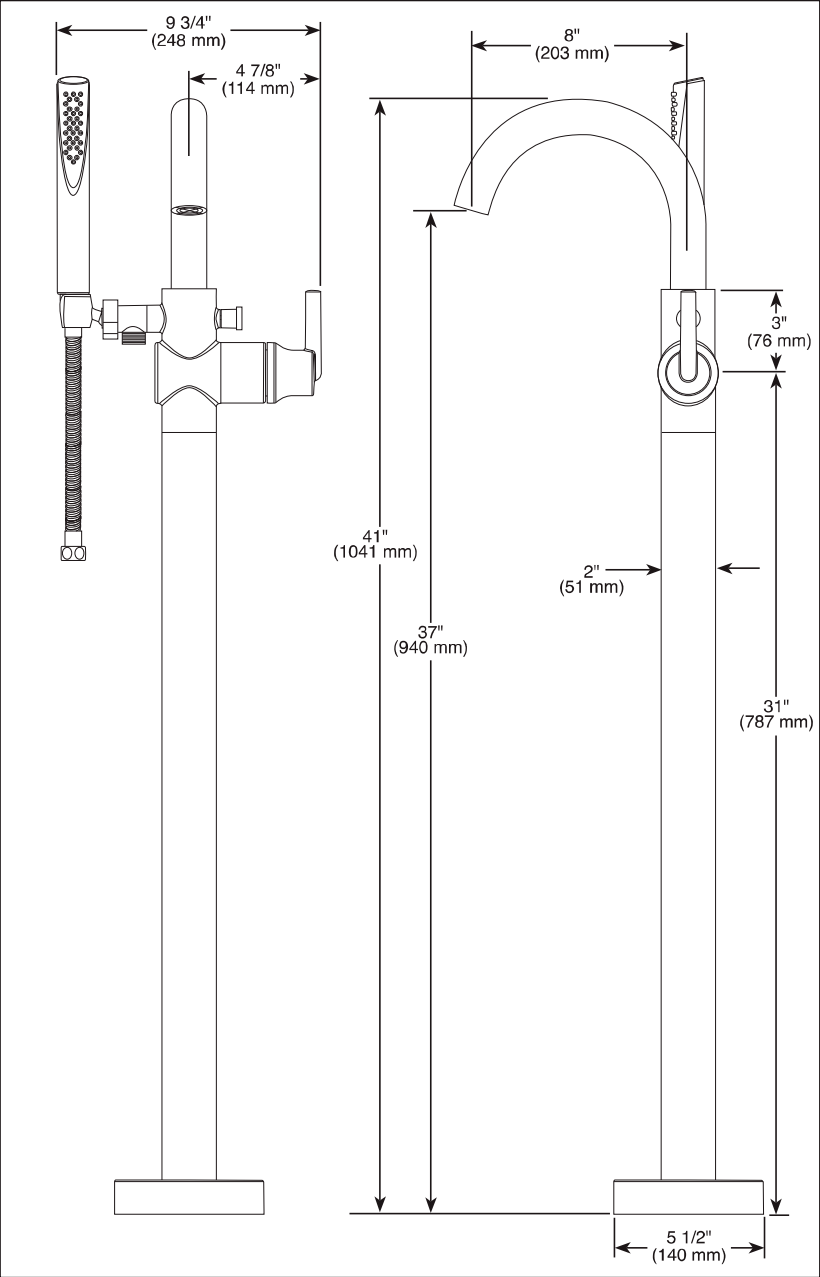
STAIRWELL REFERENCE





Submitted Model No.: _____

Specific Features: _____



▲ Designate Proper Finish Suffix

Delta reserves the right (1) to make changes in specifications and materials, and (2) to change or discontinue models, both without notice or obligation. Dimensions are for reference only. See current full-line price book or www.deltafaucet.com for finish options and product availability.
DSP-B-T4759-FL Rev. G



see what Delta can do™

FLOOR MOUNT TUB FILLER

■ Coordinates with Trinsic® and
Compel® Bath Collections

STANDARD SPECIFICATIONS:

- Hand shower max flow rate 1.75 gpm @ 80 psi, 6.6 L/min @ 550 kPa
- Spout flow up to 10 gpm @ 60 psi, 37.8 L/min @ 410 kPa
- Hot and cold indicators
- Swing spout
- 60"-82" stretchable hose with metal fittings
- Auto resetting diverter
- Dual integral check valves
- Optional pressure balanced cartridge (RP46074) available
- Pivot hand shower holder
- Must order R4700-FL or R4700-FLWS

WARRANTY

- Parts and Finish - Lifetime limited warranty; or for commercial purchasers, 10 years for multi-family residential (apartments and condominiums) and 5 years for all other commercial uses, in each case from the date of purchase.
- Electronic Parts and Batteries (if applicable) - 5 years from the date of purchase; or for commercial purchasers, 1 year from the date of purchase. No warranty is provided on batteries.

⚠ WARNING: Risk of personal injury. Do not use the tub filler as a grab bar or support bar. Install this product according to the installation guide.



COMPLIES WITH:

- ASME A112.18.1 / CSA B125.1
- Indicates compliance to ICC/ANSI A117.1 - Valve control only
- EPA WaterSense®

Delta Faucet Company
55 E. 111th Street, Indianapolis, IN 46280
350 South Edgeware Road, St. Thomas, ON N5P 4L1
© 2020 Delta Faucet Company

Louie 6731

Model number:	106385
---------------	--------

Dimensions: 67" x 31" x 23" Installation: Freestanding Material: Acrylic



Standard Features:
<ul style="list-style-type: none">Seamless 1-piece bathtub with symmetrical lookMaximised bathing well with comfortable backrests and center drainLinear overflow and waste in chrome (pre-installed)F² Drain compatibleMAAX innovative leveling legs for easy installation
Product characteristics:
<ul style="list-style-type: none">1-Piece TubAdjustable Leveling LegsEasy Installation
Warranty:
25 Years

Standard colors:

White (001)

Certifications

MAAX products adhere to one or more of the following certifications:

UL

ICC

ES

PWG

Options (Visit our website for a complete list of our options)

No	Description
<input type="checkbox"/> OPT 20260	Linear-rounded overflow & waste metal trim kit

Louie 6731

Model number:

106385

Dimensions:

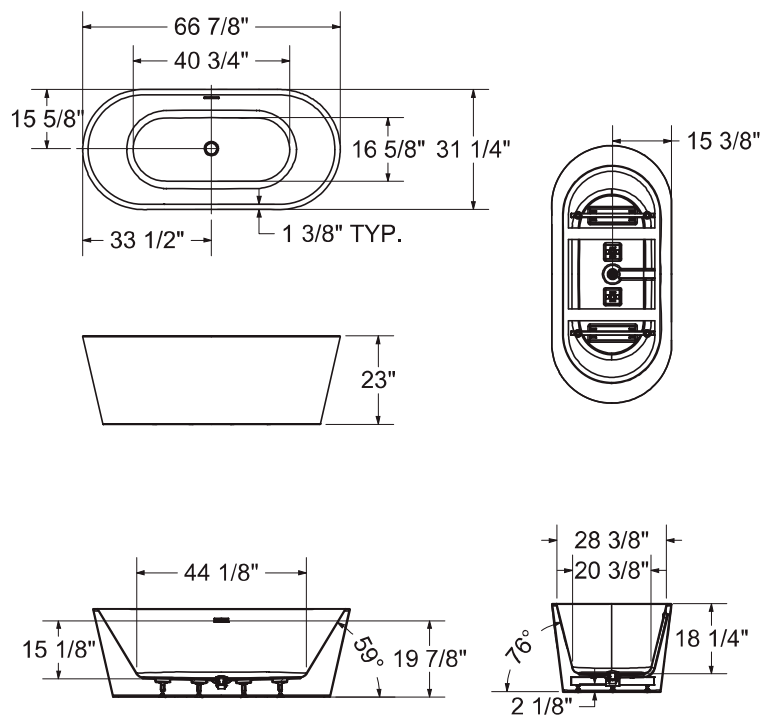
67" x 31" x 23"

Installation:

Freestanding

Material:

Acrylic



All dimensions are approximate. Structure measurements must be verified against the unit to ensure proper fit.

Dimensions:
66 7/8 x 31 1/4 x 23 in. (1699 x 794 x 584 mm)
Water capacity:
70 gallons - 264 liters
Weight:
92 lbs - 58.05 kg
Bathing well:
62 X 28 in. (1575 X 711 mm)
Deep sump height:
18 1/4 in. - 464 mm
Deck width:
2 in. - 51 mm
Drain location:
Center

Project:

Contractor:

Representative:

Date:

Tel:

Notes:

Submitted Model No.: _____
Specific Features: _____



PERSONAL
HAND HELD
SHOWERS

■ Touch-Clean® Nozzles

STANDARD SPECIFICATIONS:

- Maximum 2.5 gpm @ 80 psi, 9.5 L/min @ 550 kPa (57014 only)
- Maximum 1.75 gpm @ 80 psi, 6.6 L/min @ 550 kPa
- Hand held shower with one or three spray settings
- 60"-82" stretchable metal hose
- Certified dual check valves for backflow protection
- 24" (610 mm) wall bar with adjustable slide (allows for adjustable shower height) - 57014, 57021, 57051 and 57085 only. Not to be used as a Grab Bar. Not ADA compliant
- Wall mount bracket - 55013, 55020, 55021, 55051 and 55085 only

WARRANTY

- Parts and Finish - Lifetime limited warranty; or for commercial purchasers, 10 years for multi-family residential (apartments and condominiums) and 5 years for all other commercial uses, in each case from the date of purchase.
- Electronic Parts and Batteries (if applicable) - 5 years from the date of purchase; or for commercial purchasers, 1 year from the date of purchase. No warranty is provided on batteries.



COMPLIES WITH:

- ASME A112.18.1/CSA B125.1
- EPA WaterSense® - Applies to 57021, 57051, 57085, 55013, 55020, 55021, 55051, and 55085 only

<p>57014▲ 2.5 GPM</p> <p>24" (610mm)</p> <p>60"-82" (1524 mm-2083 mm)</p> <p>Full Body Spray Massage Spray Soft Drench Spray</p> <p>Accepts 1/2" - 14 NPSM Male</p>	<p>57021▲ 1.75 GPM</p> <p>24" (610mm)</p> <p>60"-82" (1524 mm-2083 mm)</p> <p>Full Body Spray Massage Spray Soft Drench Spray</p> <p>Accepts 1/2" - 14 NPSM Male</p>	<p>57051▲ 1.75 GPM</p> <p>25 3/4" (654 mm)</p> <p>60"-82" (1524 mm-2083 mm)</p> <p>Full Body Spray</p> <p>Accepts 1/2" - 14 NPSM Male</p>
<p>57085▲ 1.75 GPM</p> <p>24" (610mm)</p> <p>60"-82" (1524 mm-2083 mm)</p> <p>Full Body Spray</p> <p>Accepts 1/2" - 14 NPSM Male</p>	<p>55013▲ 1.75 GPM</p> <p>2 1/4" (57 mm)</p> <p>4" (102 mm)</p> <p>60"-82" (1524 mm-2083 mm)</p> <p>Full Body Spray</p> <p>Accepts 1/2" - 14 NPSM Male</p>	<p>55020▲ 1.75 GPM</p> <p>2 1/4" (57 mm)</p> <p>4" (102 mm)</p> <p>60"-82" (1524 mm-2083 mm)</p> <p>Full Body Spray</p> <p>Accepts 1/2" - 14 NPSM Male</p>
<p>55021▲ 1.75 GPM</p> <p>2 1/4" (57 mm)</p> <p>4" (102 mm)</p> <p>60"-82" (1524 mm-2083 mm)</p> <p>Full Body Spray Massage Spray Soft Drench Spray</p> <p>Accepts 1/2" - 14 NPSM Male</p>	<p>55051▲ 1.75 GPM</p> <p>2 3/8" (61 mm)</p> <p>4 1/16" (104 mm)</p> <p>60"-82" (1524 mm-2083 mm)</p> <p>Full Body Spray</p> <p>Accepts 1/2" - 14 NPSM Male</p>	<p>55085▲ 1.75 GPM</p> <p>2 1/4" (57 mm)</p> <p>4" (102 mm)</p> <p>60"-82" (1524 mm-2083 mm)</p> <p>Full Body Spray</p> <p>Accepts 1/2" - 14 NPSM Male</p>

▲ Designate proper finish suffix

◆ Your Delta Faucet handshower incorporates a backflow protection system that has been tested to be in compliance with ASME A112.18.3 and ASME A112.18.1/CSA B125.1. It incorporates two certified check valves in series, which operate independently and are integral, non-serviceable parts of the wand assembly.

Delta reserves the right (1) to make changes in specifications and materials, and (2) to change or discontinue models, both without notice or obligation. Dimensions are for reference only. See current full-line price book or www.deltafaucet.com for finish options and product availability.

DSP-B-55021 Rev. D

Delta Faucet Company
55 E. 111th Street, Indianapolis, IN 46280
350 South Edgeware Road, St. Thomas, ON N5P 4L1
© 2020 Delta Faucet Company

DS DS