

Sax

Model number:

105797

Dimensions: 60" x 32" x 25"

Installation: Freestanding

Material: AcrylX™ Ap-



Standard Features:

- 2-piece bathtub – Transports and installs easily
- Above-the-Floor Rough (AFR) and F² Drain compatible
- MAAX innovative leveling legs for easy installation
- Faucet installation can be deck-mounted or floor-mounted
- Unique feature: maximized bathing well with

Product characteristics:

- Made in North America
- Transitional Design
- Comfortable Backrest

Warranty:

Lifetime limited

Standard colors:

White (002)

Certifications

MAAX products adhere to one or more of the following certifications:

The image shows three certification logos: UL (Underwriters Laboratories), ICC-ES (International Code Council Evaluation Service), and FMG (Factory Mutual Group).

Options (Visit our website for a complete list of our options)

No	Description
<input type="checkbox"/> OPT 20137	Cable-operated waste and overflow
<input type="checkbox"/> OPT 20210	Waste and overflow



Sax

Model number:

105797

Dimensions:

60'' x 32'' x 25''

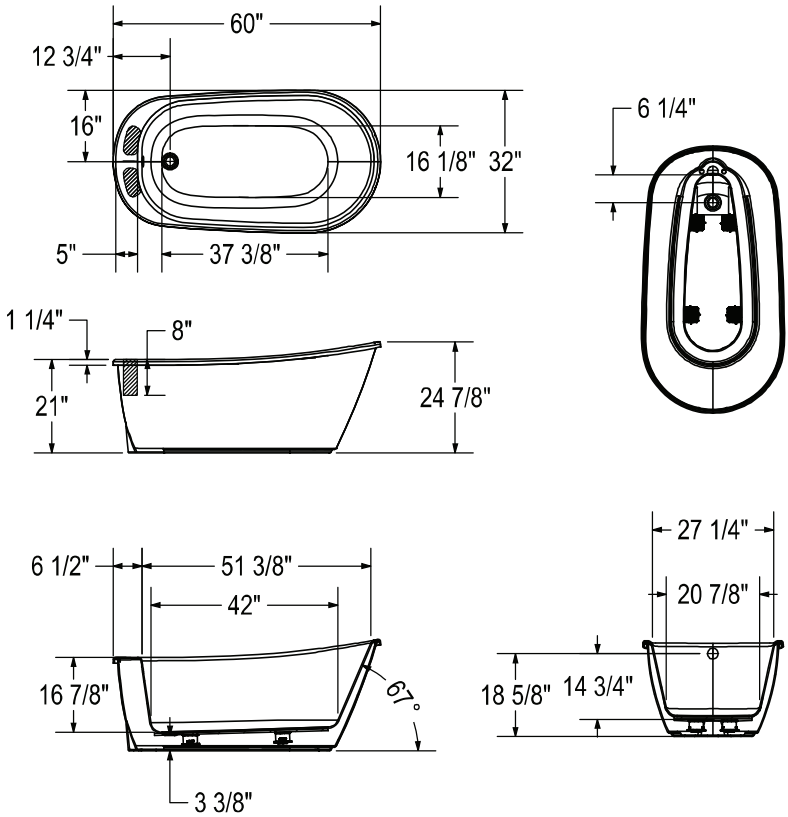
Installation:


Freestanding

Material:

AcrylX™ Ap-

1



(): Recommended faucet area 2 sections of 7" (L) x 3" (W).
Depth recommended for straight pipes 8".

All dimensions are approximate. Structure measurements must be verified against the unit to ensure proper fit.

Dimensions:
60 x 32 x 24 7/8 in. (1524 x 813 x 632 mm)
Water capacity:
44 gallons - 168 liters
Weight:
130 lbs - 58.96 kg
Bathing well:
51 3/8 X 27 1/4 in. (1305 X 692 mm)
Deep sump height:
16 7/8 in. - 429 mm
Deck width:
5 in. - 127 mm
Drain location:
End

Project:

Contractor:

Representative:

Date:

Tel:

Notes:

11/21/2021

Monitor 14 Series Contemporary Square Shower Kit DF-KIT23-PBSBL-WS | Delta Faucet

Monitor 14 Series Contemporary Square Shower Kit

MODEL#: DF-KIT23-PBSBL-WS

Finish: **Matte Black**



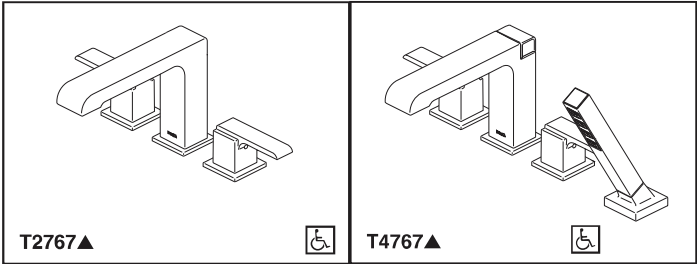
<https://www.deltafaucet.ca/bathroom/product/DF-KIT23-PBSBL-WS>



1/2

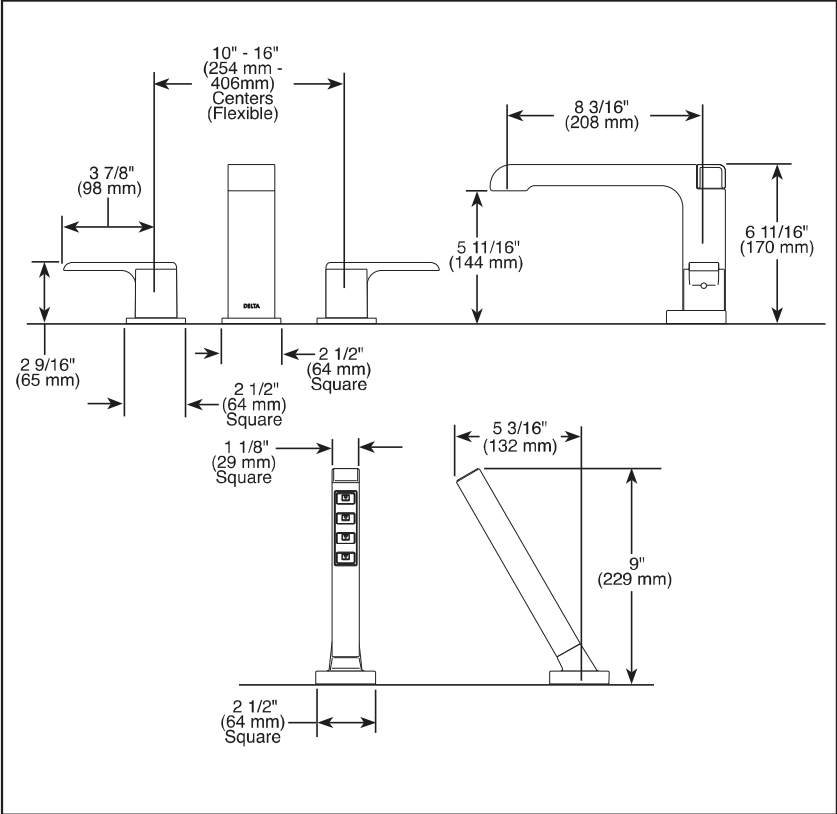
DS
JK

DS
ST



Submitted Model No.: _____

Specific Features: _____



▲ Designate Proper Finish Suffix

◆ Your Delta Faucet hand shower incorporates a backflow protection system that has been tested to be in compliance with ASME A112.18.3, CSA B125.1 and ASME A112.18.1. It incorporates two certified check valves in series, which operate independently and are integral, non-serviceable parts of the wand assembly.



see what Delta can do™

ROMAN
TUB/WHIRLPOOL
FAUCET TRIM

- Ara™ Bath Collection
- Three Hole Installation (T2767 Series)
- Four Hole Installation (T4767 Series)
- Rough-In Kit Must Also be Ordered to Complete Installation (R4707 for four hole and R2707 for three hole)

STANDARD SPECIFICATIONS:


- Trim Only for two handle Roman Tub faucet for concealed mounting
- Temperature and volume controlled with handles
- Red/blue button covers on handle for hot/cold identification
- Rough-In kit must also be ordered to complete installation (R4707 for four hole and R2707 for three hole). There are separate specification sheets on each rough-in kit if more details are required.
- Handshower includes double check valves for backflow prevention (T4767).
- H₂Okinetic® Handshower water efficient flowrate of 1.75 gpm @ 80 psi, 6.6 L/min @ 550 kPa

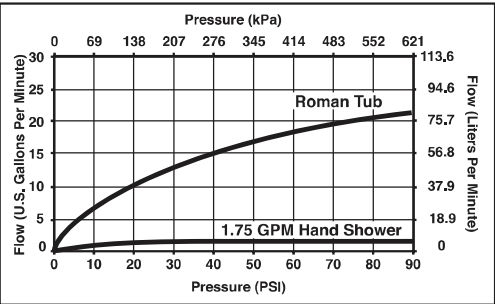
WARRANTY

- Lifetime limited warranty on parts (other than electronic parts and batteries) and finishes; or, for commercial users, for 5 years from date of purchase.
- 5 year limited warranty on electronic parts (other than batteries); or, for commercial users, for 1 year from the date of purchase. No warranty is provided on batteries.



COMPLETE VALVE COMPLIES WITH:

- ASME A112.18.1 / CSA B125.1 ◆
-  Indicates compliance to ICC/ANSI A117.1 - Valve control only
- EPA WaterSense® - Applies to handshower only - 59567*



Delta reserves the right (1) to make changes in specifications and materials, and (2) to change or discontinue models, both without notice or obligation. Dimensions are for reference only. See current full-line price book or www.deltafaucet.com for finish options and product availability.

DSP-B-T2767 Rev. D

Delta Faucet Company
55 E. 111th Street, Indianapolis, IN 46280
350 South Edgeware Road, St. Thomas, ON N5P 4L1
© 2017 Delta Faucet Company



Halo Sliding Shower Door 44 1/2-47 x 78 3/4 in. 8 mm

Model number:

138996

Dimensions: 44 1/2-47" x 78 3/4"

Installation: Alcove

Door type: Slider



Standard Features:

- Glass panels 5/16 in. (8 mm) with a height of 78 3/4 in.
- Lotus easy clean protection for effortless maintenance
- Ball bearing roller technology for smooth and quiet opening
- Reversible shower door allows for left or right opening
- Also available in a corner configuration
- Available in 4 finishes: Chrome, Brushed

Product characteristics:



- Ball Bearing Roller System
- Bestseller
- Utile Compatible

Warranty:

10 Years

Certifications

MAAX products adhere to one or more of the following certifications:



Frame Finish(es):

-  Chrome (084)
-  Dark Bronze (173)
-  Brushed Nickel (305)
-  Matte Black (340)

Glass Pattern(s):

-  Clear (900)

Recommended products (Visit our website for a complete list of our recommended products)

No	Description
106011	Olympia Square Base 4832
102002	Rectangular Base 4834 - 3 in.
105059	Rectangular Base 4836 - 5 in.



Halo Sliding Shower Door 44 1/2-47 x 78 3/4 in. 8 mm

Model number:

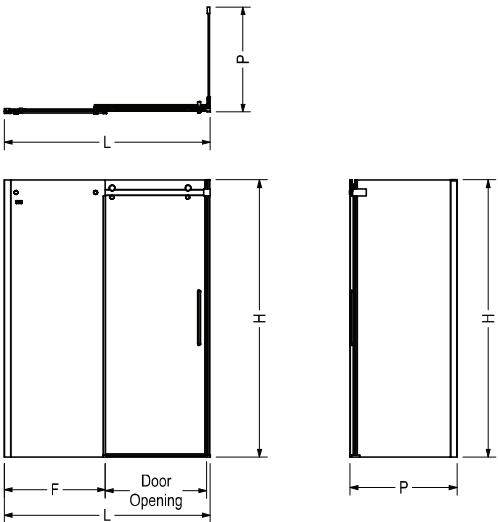
138996

Dimensions: 44 1/2-47" x 78 3/4"

Installation: Alcove

Door type: Slider

STANDARD



Code	Description	H	L Adjustable	F	P Adjustable	Door Opening	Wall Adjustment
138996	Halo 78 3/4" x 47"	78 3/4"	44 1/2" - 47"	22 1/2"	-	16 1/4" - 18 3/4"	1"
138997	Halo 78 3/4" x 59"	78 3/4"	56 1/2" - 59"	28 5/8"	-	22 1/8" - 24 5/8"	1"
139393	Return Panel 30"	78 3/4"	-	-	27 7/8"	-	1"
138998	Return Panel 32"	78 3/4"	-	-	29 7/8"	-	1"
139395	Return Panel 34"	78 3/4"	-	-	31 7/8"	-	1"
139396	Return Panel 36"	78 3/4"	-	-	33 7/8"	-	1"
139394	Return Panel 42"	78 3/4"	-	-	39 7/8"	-	1"

All dimensions are approximate. Structure measurements must be verified against the unit to ensure proper fit.

Dimensions:

44 1/2-47 x 78 3/4 in.
(1130-1194 x 2000 mm)

Glass Thickness:

5/16 in. (8 mm)

Weight:

132 lbs (59.86 kg)

Frame type:

Frameless

Opening:

Reversible

Door adjustment:

For out of plumb walls

Minimum access:

16 3/8 (416 mm)

Maximum access:

18 3/8 (416 mm)

Project:

Contractor:

Representative:

Date:

Tel:

Notes: