

MERCURIO

Version
FPMEX36I6SS-R / MercurioXL
Island 36" (90 cm) - 600 CFM

Collection
Potenza

EAN code
8034122502618



FEATURES

- Electronic control
- LED lighting
- Metallic grease filter, removable and washable
- Optional charcoal filter
- SRS Speed reduction system

Recommended mounting height from cooking surface to hood bottom: 24" - 35"

OPTIONAL ACCESSORIES

- FFCHASQC0BL
FFCHASQC0BL - Square charcoal filter - Type 3
- KACL.815
Protective cleaning cloths for stainless steel (box 10 pcs)

TECHNICAL FEATURES

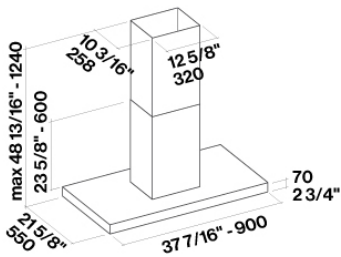
- Installation type
Island
- Dimensions
36 / 90 cm
- Finish
Stainless steel
- Motor
600 CFM
- Type of control
Electronic control
- Speed settings
4
- Lighting
Led 4x1,2 W - 3200 K
- Filter
3 x Metallic filter "Base" - 278x301 mm
- Minimum distance
Gas hob: 25 in
Electric hob: 21 in

PACKAGING:WEIGHTS AND VOLUMES

- Gross weight
75 lbs
- Net weight
62 lbs
- Volumes
13 ft³
- Packaging size
Length
41 in
Height
19 in
Depth
30 in

CONSUMPTION AND CONNECTION FEATURES

- Maximum consumption
430 W
- Plug type
Hood comes standard with Nema 5-15P power cord



The **BRICK**®

COMMERCIAL DIVISION

MIDNORTHERN APPLIANCE

A Division of The Brick Warehouse LP

Specifications for Project

RENE GRAHAM

PHOENIX HOMES

Salesperson

Tom Pearson

tpearson@thebrick.com



REMINDER:

To ensure a smooth project it is the responsibility of the homeowner / purchaser of appliances for this project to share all the attached specifications to ensure the cabinet provider, contractor, or any other tradesperson have all the information required to complete their work accurately.

Specifications are subject to change. If any tradesperson has questions regarding the attached specifications please contact our sales associate.

DV2- Lot 45

RENE GRAHAM

PHOENIX HOMES



<i>Models</i>	<i>Pages</i>
KRMF706ESS KitchenAid Refrigeration	3
KOCE500ESS KitchenAid Wall Oven	4
KDFE204KPS KitchenAid Dishwasher	5
KCGS956ESS KitchenAid Cooktop	6
WT7850HVA LG Washer	7
DLEX7900VE LG Dryer	8

**The Brick Commercial
Division/Midnorthern
Appliance**
brickcommsales.com

Tom Pearson
Director
6132217387

Invoice **08131EZGDYH**
Version 1.1

Mon, Aug 16, 2021
3:11 PM EDT



enterprise.steelcod.com/sp/brck/l63QZZ7Q

Note about page numbers:

Because the original manufacturer's documents are not altered in any way, the page numbers displayed on the page may not correspond to the page number within this package.

All specifications are intended for initial planning purposes only.

Manufacturers reserve the right to change specifications at any time without notice. Always consult the installation instructions found on the manufacturer's website or included with the appliances before installation.

KRMF706ESS

KitchenAid®

25.8 Cu. Ft. 36" Multi-Door Freestanding Refrigerator with Platinum Interior Design

DV2- Lot 45

<http://www.kitchenaid.com>

Key Features:

- 5-Door Configuration
- Preserva® Food Care System
- Herb Storage
- 2 Soft-Close Drawers
- Professionally-Inspired Design
- 3-Tier Freezer Drawer with Storage Divider
- LED Lighting
- SatinGlide® Crispers
- Adjustable Spill Resistant Shelves
- Exterior Ice and Water Dispenser
- Measured Water Fill
- In-Door-Ice® System

Product Dimensions:

Height: 70 1/8

Width: 36

Depth: 36 1/4

Electrical Requirements:

20.

Additional Information:

[Use And Care Guide](#)[Dimension Guide](#)[Energy Guide](#)[Warranty Certificate](#)

Available in:

Black Stainless



Stainless Steel

INVESTED
IN
AMERICAADA
Compliant

®Registered trademark/TM Trademark of Whirlpool, U.S.A. © 2016 Whirlpool Corporation. All Rights Reserved.
All other trademarks are owned by their respective companies.

Because Whirlpool Corporation policy includes a continuous commitment to improve our products, we reserve the right to change materials and specifications without notice. We also reserve the right to discontinue or transition products without notice.

Manufacturer's Suggested Retail Price (MSRP) and Minimum Advertised Price (MAP) provided for reference purposes only. Dealer alone determines advertised and retail prices.

Created On: Monday, March 06, 2017 19:21:39

KOCE500ESS

KitchenAid®

30" Combination Wall Oven with Even-Heat™ True Convection (Lower Oven)

DV2- Lot 45

<http://www.kitchenaid.com>

Key Features:

- Even-Heat™ True Convection Oven (lower oven)
- Microwave Convection Cooking (upper oven)
- Professionally-Inspired Design
- Temperature Probe
- EasyConvect™ Conversion System
- 5.0 Cu. Ft. Total Capacity (lower oven)
- 1.4 Cu. Ft. Capacity (upper oven)
- Crispwave™ Microwave Technology and Crisper Pan (upper oven)
- SatinGlide™ Roll-Out Extension Rack (lower oven)

Product Dimensions:

Height: 42 1/2

Width: 30

Depth: 27 1/8

Electrical Requirements:

40 Amps.

Additional Information:

[Use And Care Guide](#)[Dimension Guide](#)[Installation Guide](#)[Warranty Certificate](#)

Available in:

- Black
- Stainless Steel
- White

INVESTED
IN
AMERICA

®Registered trademark/TM Trademark of Whirlpool, U.S.A. © 2016 Whirlpool Corporation. All Rights Reserved.
All other trademarks are owned by their respective companies.

Because Whirlpool Corporation policy includes a continuous commitment to improve our products, we reserve the right to change materials and specifications without notice. We also reserve the right to discontinue or transition products without notice.

Manufacturer's Suggested Retail Price (MSRP) and Minimum Advertised Price (MAP) provided for reference purposes only. Dealer alone determines advertised and retail prices.

Created On: Monday, March 06, 2017 18:50:58

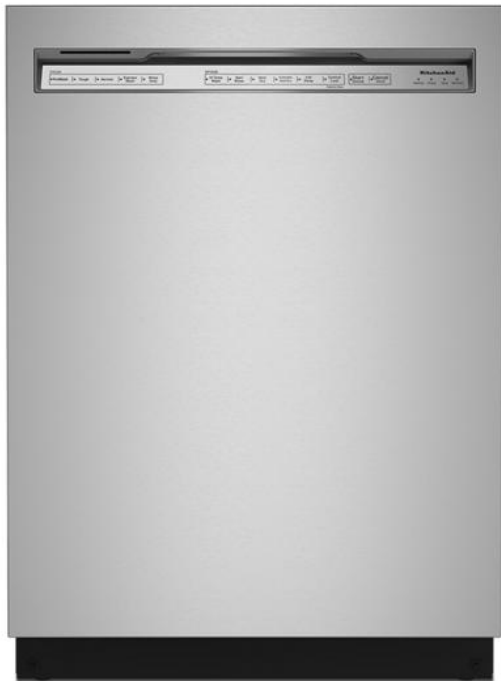
KDFE204KPS

KitchenAid®

DV2- Lot 45

<http://www.kitchenaid.com>

39 dBA Dishwasher in PrintShield™ Finish with Third Level Utensil Rack



Key Features:

- 39 dBA
- ProWash™ Cycle
- PrintShield™ Finish
- Heat Dry Option
- Third Level Utensil Rack
- Extended Heat Dry Option
- Durable Stainless Steel Interior
- SatinGlide® Rails in Third and Middle Racks
- Express Wash Cycle
- Adjustable Middle Rack

Product Dimensions:

Height: 34 1/2

Width: 23 7/8

Depth: 24 1/2

Additional Information:

[Dimension Guide](#)[Energy Guide](#)[Warranty Certificate](#)

Available in:

Black Stainless
Steel with Print-
Shield™ Finish
Stainless Steel with
PrintShield™ Finish



®Registered trademark/TM Trademark of Whirlpool, U.S.A. © 2016 Whirlpool Corporation. All Rights Reserved.

All other trademarks are owned by their respective companies.

Because Whirlpool Corporation policy includes a continuous commitment to improve our products, we reserve the right to change materials and specifications without notice. We also reserve the right to discontinue or transition products without notice.

Manufacturer's Suggested Retail Price (MSRP) and Minimum Advertised Price (MAP) provided for reference purposes only. Dealer alone determines advertised and retail prices.

Created On: Tuesday, July 28, 2020 09:30:36

KCGS956ESS

KitchenAid®

36" 5-Burner Gas Cooktop with Griddle

DV2- Lot 45

<http://www.kitchenaid.com>

Key Features:

- Even-Heat™ 10K BTU Torch Burner
- 20K BTU Professional Dual Ring Burner
- CookShield Finish
- Lighted Knobs
- Even-Heat™ 6K BTU Simmer Burner
- Removable Griddle
- Electronic Ignition and Automatic Reignition
- Full-Width Cast-Iron Grates
- LP Conversion Kit Included

Product Dimensions:

Height: 3 11/16

Width: 36 1/4

Depth: 21

Electrical Requirements:

15.

Additional Information:

[Use And Care Guide](#)[Dimension Guide](#)[Installation Guide](#)[Warranty Certificate](#)

Available in:

 Stainless SteelINVESTED
IN
AMERICAADA
Compliant

®Registered trademark/TM Trademark of Whirlpool, U.S.A. © 2016 Whirlpool Corporation. All Rights Reserved.
All other trademarks are owned by their respective companies.

Because Whirlpool Corporation policy includes a continuous commitment to improve our products, we reserve the right to change materials and specifications without notice. We also reserve the right to discontinue or transition products without notice.

Manufacturer's Suggested Retail Price (MSRP) and Minimum Advertised Price (MAP) provided for reference purposes only. Dealer alone determines advertised and retail prices.

Created On: Friday, March 03, 2017 08:08:55



EMMENTAL

24" French Door Beverage Center - SBC051D1BSS

PRODUCT FEATURES

DV2- Lot 45

ELIMINATE STORAGE INCONSISTENCIES

Dual temperature zones bring an end to tough multi-beverage storage decisions. Wine and beverages require customized levels of cool, so two independently controlled sections, accessible through classic French doors, allow proper temps to be set for your distinct selection.

BANISH ICE BUILD UP

The frost-free, fan-forced cooling system in this unit makes unsightly and often damaging ice accumulation obsolete. The efficient defrosting system ensures you'll never deal with over-frozen frustrations.

NEVER BE LEFT IN THE DARK

The true, blue LED track lighting that illuminates the interior of this unit exquisitely displays your wine without any damaging heat. It is 50% brighter than the previous model and now offers 3 lighting options

*Where some see room for an appliance;
We see room for an experience*

www.silhouetteappliances.com

PRODUCT DESCRIPTION

What prizes are hidden behind doors 1 and 2? Your expertly preserved beverages of choice. This built-in features double the temperature zones to store your wine and beverages simultaneously and fan-forced cooling assists you in enjoying frost-free luxury.

SPECIFICATIONS

Dimensions

Width	60cm	23.8"
Depth	60cm	23.75"
Height	86cm	34"

Capacity

Bottle Capacity 750ml	60
Can capacity 330ml	27

Temperature Range

Temperature	Low: 37 °F	High: 64 °F
-------------	------------	-------------

WARRANTY

The Silhouette SBC051D1BSS model comes with a 24-month warranty on parts and labour with convenient in-home service. The installation and yearly maintenance (cleaning) of the fridge are not covered under the warranty.

Danby Products Ltd. PO Box 1778, Guelph, Ontario Canada N1H 2Z9 (519) 837-0920 FAX: (519) 837-0449

We can make elegance look effortless, but it is always evolving. This is why our specifications may also change along the way, so these specifications are subject to change without notice. MSRP is Manufacturer's Suggested Retail Price and may not necessarily be the price at which the product is sold.

INSTALLATION INSTRUCTIONS

DV2- Lot 45

PREPARING THE ENCLOSURE

Gloves and safety goggles should be worn during installation.

It is not recommended to install the appliance into a corner or directly beside a wall. The door will need to be opened more than 90° to allow full extension of the shelves. If it is necessary to place the unit next to a wall or in a corner, leave at least 2-4 inches (5-10 cm) of space between the wall and the appliance to allow for the door opening.

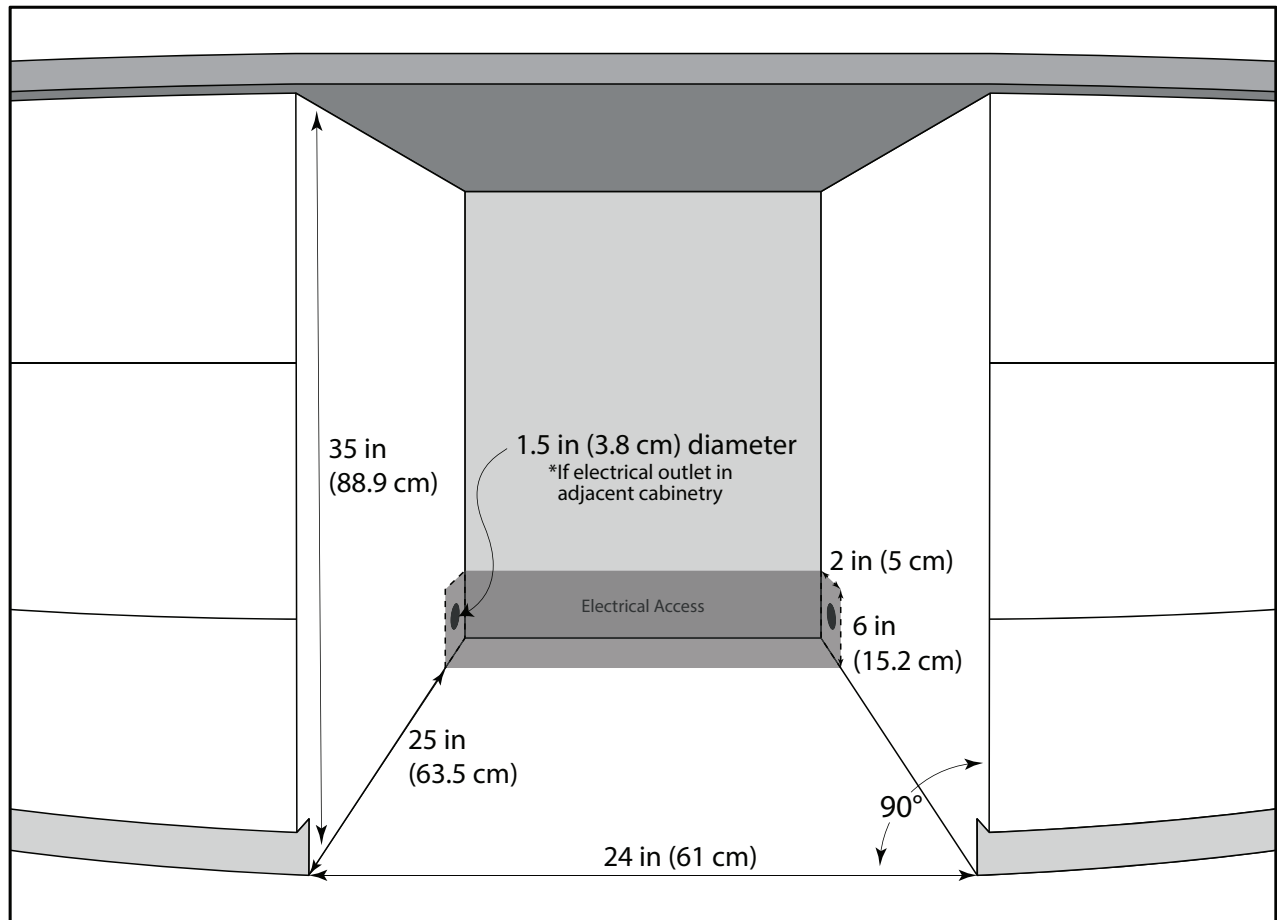
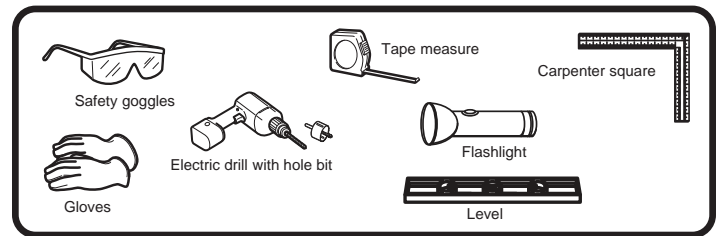
The cabinet opening must be at least 24 inches (61 cm) wide by 35 inches (88.9 cm) high by 25 inches (63.5 cm) deep.

Note: The listed depth requirement is assuming that the electrical outlet is located in the adjacent cabinetry or flush mounted in the rear wall, not surface mounted inside the enclosure.

If the electrical outlet is located inside adjacent cabinetry, cut a 1.5 inch (3.8 cm) diameter hole to admit the power cord. If the cabinet wall is metal, the hole edge must be covered with a bushing or grommet.

REQUIRED TOOLS

- Safety goggles
- Gloves
- Tape measure
- Carpenter square
- Level
- Flashlight
- Electric drill with hole bit



LG LAUNDRY

WT7850HVA

6.0 cu.ft. Capacity Top Load Washer

KEY FEATURES

TurboWash3D™ Technology
TurboDrum™ with High Efficiency Direct Drive (HEDD)
Allergiene™ Steam Cycle Certified by Asthma Canada
SmartThinQ® Technology (Wi-Fi Enabled)
6Motion™ Technology
ENERGY STAR® Qualified
Wi-Fi Connectivity
Inverter BLDC Pump Motor



Enjoy new ways to control your home with LG smart appliances

SmartThinQ®

PRODUCT FEATURES

CAPACITY	
Capacity	6.0 cu. ft.
APPEARANCE	
Design Look	Rear Control
Intelligent Electronic Controls with Dual LED Display	•
Touch Buttons	•
Dial-A-Cycle™	•
ENERGY	
ENERGY STAR®	•
WASH PROGRAMS	
No. of Programs	14
Wash Programs	Normal, Heavy Duty, Bedding, Deep Wash, Bright Whites™, Sanitary, Allergiene™, Pre Wash+Normal, Delicates, Perm.Press, Towels, Speed Wash, Waterproof, Downloaded
No. of Options	16
Options	Steam, Cold Wash, Remote Start, Delay Wash, Wi-Fi Connect, Signal, TurboWash™, Water Plus, Extra Rinse, Tub Clean, Control Lock, Add Garment, Rinse+Spin, Stain Care, Soak, Spin Only
No. of Wash/Rinse Temps	5
	Extra Hot, Hot, Warm, Cold, Tap Cold
Spin Speeds	Extra High, High, Medium, Low, No Spin
No. of Water Levels	Automatically adjusts to the size of load
No. of Soil Levels	3
FABRIC CARE FEATURES	
SmartRinse™ Jet Spray System	•
ColdWash™ Option	•
SenseClean™ System	•
CONVENIENCE FEATURES	
3 Tray Dispenser	Main Wash, Fabric Softener + Liquid Bleach
TrueBalance™ Plus Anti-Vibration System	•
LoadSense	•
Status Indicator(s)	•
End of Cycle Signal	•
Child Lock	•
Auto Suds Removal	•
Forced Drain System	•
Add Garment Indicator	•
LoDecibel™ Quiet Operation	•
Leveling Legs	4 Adjustable Legs

DV2- Lot 45



SMART THINQ™ TECHNOLOGY

SmartDiagnosis™

Wi-Fi Connectivity

MOTOR AND AGITATOR

Motor Type

High Efficiency Direct Drive (HEDD)

Motor Speed

Variable

Max RPM

950

Axis

Vertical

MATERIALS AND FINISHES

NeveRust™ Stainless Steel Drum & Washplate

Cabinet

Painted Steel

Control Panel

Plastic

Lid

Tempered Glass

Available Colours

Black Steel(B), Graphite(V)

POWER SOURCE

Ratings

CSA Listed

Electrical Requirements

120V, 60Hz, 10 Amps

Type

Electric

DIMENSIONS

Product (WxHxD)

27" x 44 1/2" x 28 3/8"
(57 1/4" H with lid open)

Carton (WxHxD)

29 1/2" x 47" x 31 1/4"

Weight (Product/Carton)

138.9 lbs/162.3 lbs

LIMITED WARRANTY

1 Year Parts and Labour, 3 Years on Drum, 10 Years on Direct Drive Motor

UPC CODES

WT7850HVA Washer

772454072758

DLEX7900VE Electric Dryer

772454072765



DLEX7900VE
7.3 cu.ft. TurboSteam™ Dryer with
EasyLoad™ Dual-opening Door

- Key Features
- TurboSteam™ Technology
 - EasyLoad™ Door
 - SmartThinQ® Technology (Wi-Fi Enabled)
 - Sensor Dry System
 - 7.3 cu. ft. Capacity
 - ENERGY STAR® Qualified

POWER SOURCE

Ratings	Electrical Requirements
CSA Listed	230V, 24 Amps
Type	
Electric	

DIMENSIONS

Product (WxHxD)	Carton (WxHxD)
27" x 44 1/4" x 29 1/2" (50 1/4" D with door open)	29 1/2" x 48" x 31 1/4"
Weight (Product/Carton)	
129.8 lbs / 149.6 lbs	

WARRANTY

Warranty
1 year parts and labour

DV2- Lot 45
Master Ensuite

Bathroom / Showering

Monitor 14 Series Contemporary Square Shower Kit

MODEL#: DF-KIT23-PBS-WS

Finish: **Chrome**



DV2- Lot 45
Master Ensuite

- Monitor 14 Series valve-only trim with integrated diverter
- MultiChoice Universal Valve with stops
- H2Okinetic Touch-Clean raincan shower head
- 4-setting H2Okinetic hand shower with slide bar and hose
- Shower arm, flange and wall elbow included

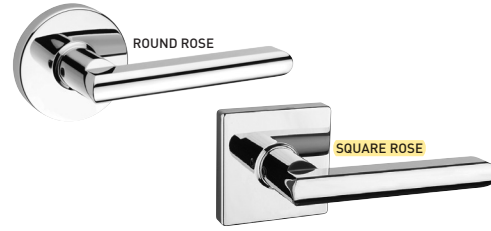


Taymor® | PRODUCT SPECIFICATIONS

THE PREMIER LINE VEGA LEVERSET

SPECIFICATIONS

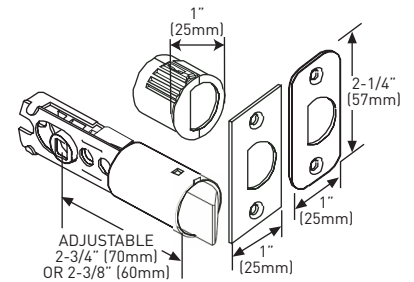
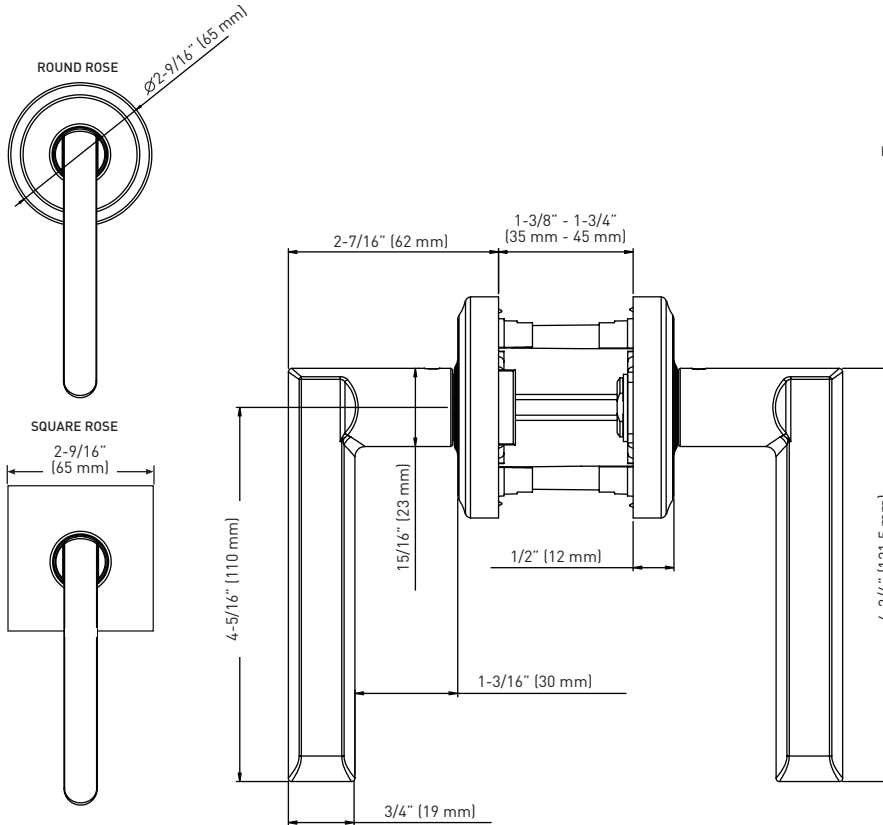
- INTERIOR LOCK SOLUTION FOR SINGLE AND MULTI-FAMILY RESIDENTIAL BUILDINGS
- UNIVERSAL 6-IN-1 LATCH: DRIVE IN, SQUARE MORTISE AND RADIUS CORNER WITH ADJUSTABLE BACKSET: 2-3/8" (60 mm) – 2-3/4" (70 mm)
- STANDARD BORE HOLES: 2-1/8" (54 mm)
- FITS STANDARD DOOR THICKNESS: 1-3/8" (35 mm) – 1-3/4" (45 mm)
- FULL LIP RADIUS CORNER STRIKE WITH ADJUSTABLE TAB STANDARD: 1-3/4" x 2-1/4" (45 mm x 57 mm)
- PUSH BUTTON AUTO-RELEASE ON PRIVACY FUNCTION



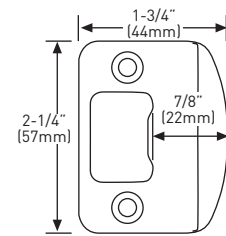
GRADE
3
ANSI GRADE 3



LIFETIME MECHANICAL & FINISH WARRANTY



6-IN-1 PRIVACY/PASSAGE LATCH



FULL LIP RADIUS STRIKE

MEASUREMENTS SUBJECT TO A 3% VARIANCE

MEASUREMENTS ARE FOR REFERENCE ONLY. TAYMOR RESERVES THE RIGHT TO CHANGE THE PRODUCT SPECS WITHOUT NOTICE. FOR PRODUCT WARRANTY, PLEASE VISIT TAYMOR WEBSITE FOR DETAILS www.taymor.com

VEGA - SQUARE ROSE

BUILDER PACK

	PRIVACY	PASSAGE		DUMMY
SATIN NICKEL 15	30-D006724SN	30-D006734SN	-	30-674SN
MATTE BLACK 19	30-D006724BLK	30-D006734BLK	-	30-674BLK
POLISHED CHROME 26	30-D006724PC	30-D006734PC	-	30-674PC
SATIN CHROME 26D	30-D006724SC	30-D006734SC	-	30-674SC

CASE QTY 20

VEGA - ROUND ROSE

BUILDER PACK

	PRIVACY	PASSAGE	INSIDE TRIM	DUMMY
SATIN NICKEL 15	30-D006424SN	30-D006434SN	30-HL0064SN	30-644SN
MATTE BLACK 19	30-D006424BLK	30-D006434BLK	30-HL0064BLK	30-644BLK
POLISHED CHROME 26	30-D006424PC	30-D006434PC	30-HL0064PC	30-644PC
SATIN CHROME 26D	30-D006424SC	30-D006434SC	30-HL0064SC	30-644SC

CASE QTY 20

