

TO BE READ IN CONJUNCTION WITH MASTER FOOTPRINTED PLANS

**REVIEWED FOR MARKED CHANGE ONLY**

WINDOWS REVISED TO 6' PATIO SLIDER WITH JULIETTE BALCONY RAILING

-COVERED REAR DECK ADDED  
-PATIO SLIDER INCREASED TO 8' WIDE

USE FULL HEIGHT STUDS

GREAT ROOM 16'8"x20'7"

JULIETTE RAILING

6' PATIO SLIDER

3-2X10 BEAM

COVERED DECK 13'6"x10'0"

13'-0"

6'-4"

7'-2"

3-2X10 BEAM

GRIDDER

3-2X10

8' PATIO SLIDER

S/I GAS LINE

S/I MAKE-UP AIR SYSTEM

STOVE LOC.

CHEF'S

JOIST DIRECTION

PREDRILLED

FP

FIREPLACE RAISED 12" AFF

GAS

1'-4"

6'-9"

2-2X8

2-2X8

2-2X8

6"

10'-10"

6"

5'-6"

10'-4"

5'-4"

3'-6"

5'-4"

16'-8"

5'-4"

3'-6"

6"

2'-6"

6"

5'-0"

5'-0"

6'-11"

3'-3"

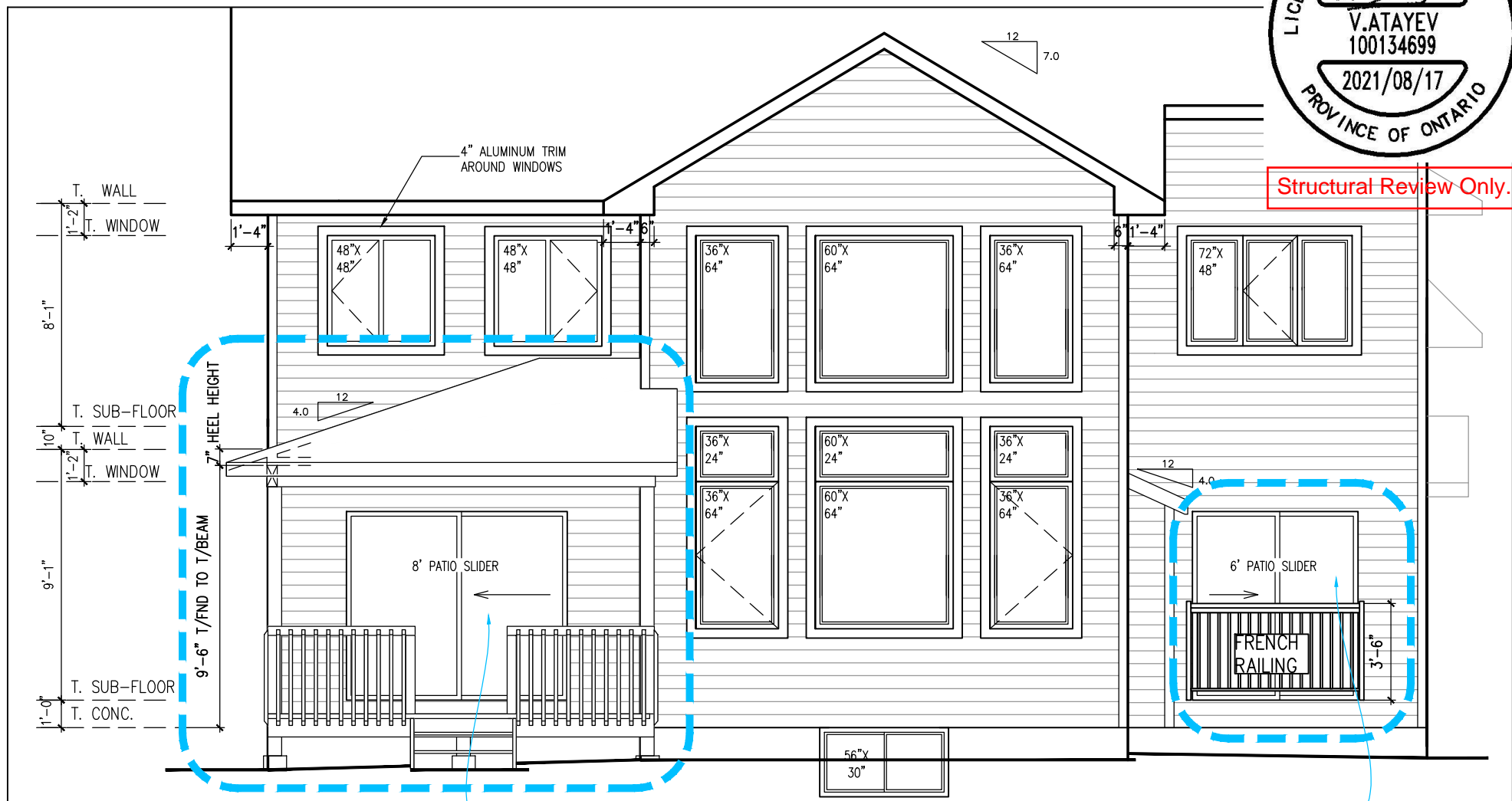
5'-5"

LED LEDGE

A circular professional seal for a Licensed Professional Engineer in the Province of Ontario. The seal contains the following information:

- Top Arc:** LICENSED PROFESSIONAL
- Signature:** A stylized signature of V. Atayev is written across the center.
- Center:** V. ATAYEV  
100134699
- Bottom Arc:** 2021/08/17
- Outer Ring:** PROVINCE OF ONTARIO

Structural Review Only.



- COVERED REAR DECK ADDED
- PATIO SLIDER INCREASED TO 8' WIDE

WINDOWS REVISED TO 6' PATIO  
SLIDER WITH JULIETTE  
BALCONY RAILING



SITE: DIAMONDVIEW ESTATES

LOT NUMBER:

CIVIC ADDRESS:  
1959 CESSNA PRIVATE

2-15

2	ENGINEER MARKUPS APPLIED	16/08/21	CB
1	COVERED DECK & IN-LAW SUITE 6' PATIO SLIDER	06/08/21	CB
No.	Description	dd/mm/yy	By
REVISIONS			

footprint:	518
drawn by:	SP
date:	JUN 12/16
scale:	3/16"=1'-0"

sheet no:

1

---

1