

Ariosa 6636

Model number:	106267
---------------	--------

Dimensions: 66" x 36" x 28" Installation: Freestanding Material: Acrylic



Standard Features:

- 2-piece bathtub with symmetrical look and concealed seam
- Recessed deck with ample space for faucet installation
- Maximized bathing well with center drain
- Above-the-Floor Rough (AFR) and F² Drain compatible
- MAAX innovative leveling legs for easy installation

Product characteristics:

- Made in North America
- Bestseller
- Deck Space for Faucet

Warranty:



25 Years

Standard colors:

White (001)

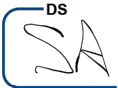
Certifications

MAAX products adhere to one or more of the following certifications:



Options (Visit our website for a complete list of our options)

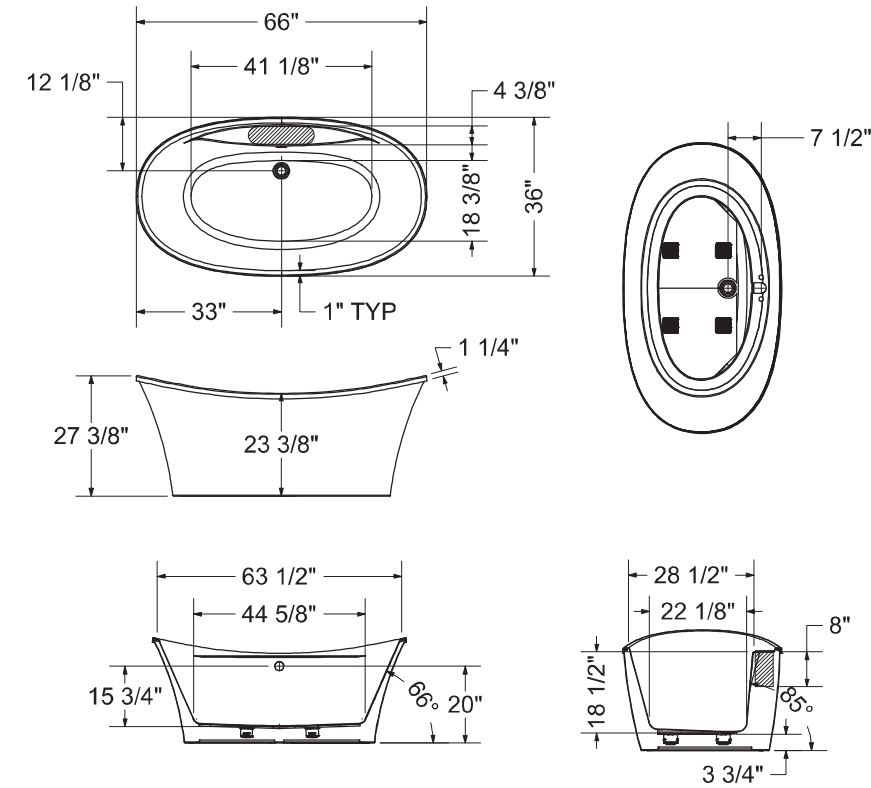
No	Description
<input type="checkbox"/> OPT 20252	Linear Waste and overflow
<input type="checkbox"/> OPT 20137	Cable-operated waste and overflow
<input type="checkbox"/> OPT 20250	Brass waste and overflow for high-rise construction




Ariosa 6636

Model number:	106267
---------------	--------

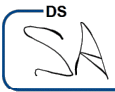
Dimensions: 66" x 36" x 28" Installation: Freestanding Material: Acrylic



(): Recommended faucet area of 15" (L) x 4" (W).
Depth recommended for straight pipes 8".
All dimensions are approximate. Structure measurements must be verified against the unit to ensure proper fit.

Dimensions:
66 x 36 x 28 in. (1676 x 914 x 711 mm)
Water capacity:
56 gallons - 214 liters
Weight:
98 lbs - 44.44 kg
Bathing well:
63 1/2 X 28 1/2 in. (1613 X 724 mm)
Deep sump height:
18 7/8 in. - 479 mm
Deck width:
4 3/8 in. - 111 mm
Drain location:
Center

Project:	
Contractor:	
Representative:	
Date:	
Tel:	
Notes:	



4/22/2015

Studio® Concealed Trapway Right Height® Dual Flush Elongated Front toilet with Seat - American Standard - Product Details



Studio® Concealed Trapway Right Height® Dual Flush Elongated Front toilet with Seat - American Standard - Product Details



This page was printed from <http://americanstandard.ca>

Product Information

Studio® Concealed Trapway Right Height® Dual Flush Elongated Front toilet with Seat

This page was printed from <http://americanstandard-ca.com>

MODEL #: 2794204, 735168-400, 4000204, 3075120, 5218110, 7381203-200 | COLLECTION: STUDIO



Description

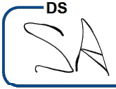
- LXP (Luxury Performance) Toilet
- Combination dual flush bowl and tank, with seat
- 12" (305mm) rough-in
- Siphon action jetted bowl with smooth-sided, concealed trapway
- High efficiency, low consumption
 - Full Flush 1.3 gpf/6.0 Lpf
 - Conserving Flush 0.9 gpf/4.1 Lpf, utilizes 21% less water
- Meets EPA WaterSense® Criteria (Pending)
- EverClean® Surface
- PowerWash™ rim scrubs bowl with each flush
- 16-1/2" (419mm) rim height
- Fully-glazed 2-1/8" trapway
- Oversized 3" flush valve
- Generous 9" x 8" water surface area
- Includes Duroplast slow close seat and cover with concealed seat ring and easy lift-off feature for simple removal and reattachment for cleaning
- Chrome-plated top mounted push button actuator
- 2 colour matched bolt hole covers
- 5 year warranty on entire toilet
- Design coordinates with Studio® and Boulevard® lavatories

Nominal Dimensions -
Length x Width x Height:
30-1/4" x 15-3/4" x 30-3/4"
(769 x 400 x 780mm)

Features and Innovations

- 5 Year Warranty
- EverClean™ Surface
- Right Height
- Toilet Performance - Best - MAP Score between 800-1000g
- Toilet Shape - Elongated
- Water Efficient
- WaterSense® Certified

Buy Now



Product: 7381203-200.0070A
Dual Flush Push Button,Top Mount \$25.00 Each

Qty

Exhibit 6032 IFS

Model number: 105520

Dimensions: 60" x 32" x 18" Installation: Alcove Material: Acrylic



Standard Features:

- Rectangular shape bathtub in alcove installation
- Available in Above-the-Floor Rough (AFR) or not
- Minimalist look with discreet armrests and textured floor
- Integrated tiling flange
- Integrated skirt with access panel when equipped with a system

Product characteristics:

- Made in North America
- Elegant design
- Integrated Tiling Flange and Skirt

Systems:

- Whirlpool
- Combined Whirlpool/Aeroeffect
- Aeroeffect

Warranty:

25 Years

Standard colors:

White (001)

Bone (004)

Biscuit (007)

Certifications
MAAX products adhere to one or more of the following certifications:

Recommended products (Visit our website for a complete list of our recommended doors)

No	Description
139398	Halo Sliding Tub Door 56 ½-59 x 59 in. 8 mm
135330	Incognito 57 Shaker Sliding Tub Door 56-59 x 56 ¾ in. 8 mm
139351	Incognito 57 Sliding Tub Door 56-59 x 56 ¾ in. 6 mm

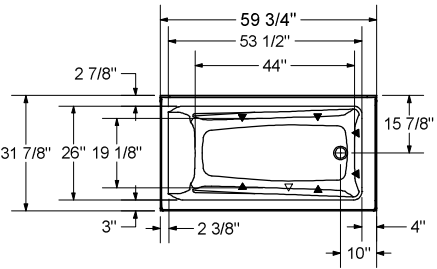
Options (Visit our website for a complete list of our options)

No	Description
<input type="checkbox"/> OPT 10019	Removable access panel
<input type="checkbox"/> OPT 10053	Chromatherapy
<input type="checkbox"/> OPT 10095	Water heater assembly
<input type="checkbox"/> OPT 10106	Metal trim kit for whirlpool and combined systems
<input type="checkbox"/> OPT 20029	Metal trim kit for Air Push Control

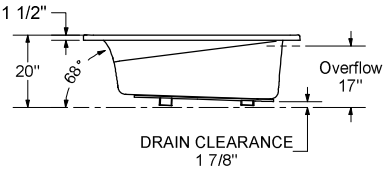
Exhibit 6032 IFS

Model number: 105520

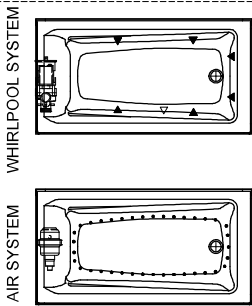
Dimensions: 60" x 32" x 18" Installation: Alcove Material: Acrylic



1" Single Integrated tiling
flange (shown)
2" Double Integrated tiling
flange (not shown)
Drop-in model (Shown)



Wood support design may vary.
Single Integrated tiling flange: 1" height x 1/4" thickness (shown)
Double Integrated tiling flange: 2" height (not shown)
All dimensions are approximate.
Structure measurement must be verified against the unit to ensure proper fit.



- (▲) : Indicates whirlpool jets
- (△) Indicates suction positioning
- (●) Indicates airjets positioning

Dimensions:
59 3/4 x 32 x 17 3/4 in. (1518 x 813 x 451 mm)
Water capacity:
46 gallons - 173 liters
Weight:
78 lbs - 35.37 kg
Bathing well:
53 1/4 X 25 7/8 in. (1353 X 657 mm)
Deep sump height:
16 1/4 in. - 413 mm
Deck width:
4 1/8 in. - 105 mm
Drain location:
Left
Right

Project:

Contractor:

Representative:

Date:

Tel:

Notes: