

LG COOKING

LSE4616_

Electric Single Oven Slide-In

Induction + Radiant Cooktop

ProBake Convection®

EasyClean®

Glass Touch (SmoothTouch™)

WideView™ Window

Slide-in Design

Large Capacity (6.3 cu ft.)

SmartDiagnosis™

wi-fi Connectivity



Enjoy new ways to control your home with LG smart appliances

- Start or stop your Oven remotely
- Set your Monitor Status from your smartphone
- Works with the LG SmartThinQ® app

SmartThinQ®



CAPACITY

Total Oven Capacity (cu.ft.)	6.3 cu.ft.
Storage Drawer Capacity (cu.ft.)	0.8 (no Handle)

COOKTOP

Type	Induction + Radiant
No of Radiant Elements	5 (4- induction; 1 radiant)
Element Size/Wattage - Left Rear	1800 (Boost) / 1300 (Normal) (6")
Element Size/Wattage - Right Rear	100 (6")
Element Size/Wattage - Left Front	3200 (Boost) / 2100 (Normal) (8")
Element Size/Wattage - Right Front	4000 (Boost) / 2400 (Normal) (11")
Center (Warming Zone)	1800 (Boost) / 1300 (Normal) (6")
Cooktop Finish	Grey Patterned on Black Ceramic Glass
Hot Surface LED Indicator	Yes

OVEN FEATURES

Broil Element (Watt)	Sheath (4.2KW)
Convection (Watt)	Sheath 2500W
Convection Fan	Dual Speed (High/Low)
Convection System/Mode/Cooking System	ProBake Convection®
Oven Cooking Modes	Bake, Broil High, Broil Low, Convection Bake, Convection Roast, Speed Roast, Warm, Proof
Oven Control Features	Glass Touch (SmoothTouch™)
Convection Conversion	Yes
EasyClean®	Yes
Self Clean	Yes
GoCook Smart Oven Light	Yes (1 Light)
No. of Rack Positions	7
Door Lock	Yes
Automatic Safety Shut-Down	After 12 hours

DRAWER FEATURES

Type	Storage (no Handle)
------	---------------------

CONTROL

Cooktop Control Type	Front Tilt-Control Knobs
Oven Control Type	Glass Touch
Display	VFD
Language	English
Clock	12 hr or 24 hr (option)
Kitchen Timer	Yes
Timed Cook	Yes
Temperature Unit of Measure	Fahrenheit / Celsius
Cooking Complete Reminder Volume	Beeper (+,-)



APPEARANCE

All Available Colors	Stainless Steel / Black Stainless Steel
Knobs	Stainless Steel / Black Stainless Steel
Handle	Stainless Steel / Black Stainless Steel
Oven Door Feature	WideView™ Window

SmartThinQ® SMART FEATURES

SmartDiagnosis™	Yes
Wi-Fi Connectivity	Yes

DIMENSIONS/CLEARANCES/WEIGHT

Shipping Weight (lbs)	224
Product Weight (lbs)	194
Cabinet Width (in)	30"
Overall Depth (in) - including handle	28 15/16"
Overall Height (in)	37 7/8"
Overall Width (in)	29 7/8"
Oven Interior Dimensions (in) (W x H x D)	24 7/8" x 21 3/8" x 20"
Height to Cooking Surface (in)	36"
Drawer Dimensions (in) (W x H x D)	22 3/16" x 4 1/2" x 16 3/8"
Carton Dimensions (in) (W x H x D)	32 31/32" x 44" x 30 17/32"

POWER/RATINGS

Amp Rating at 208V	47A
Amp Rating at 240V	48.3A
KW Rating at 208V	9.8kW
KW Rating at 240V	11.6kW

ACCESSORIES

Standard Rack	3
Spray Bottle	Yes
Scouring Pad	Yes
Cooktop Cream/ Cleaner	Yes

WARRANTY

Parts & Labor	1 Year
---------------	--------

UPC CODES

LSE4616ST (Stainless Steel)	048231340069
LSE4616BD (Black Stainless Steel)	048231340076

PW2- Lot 298

LSE4616_

Electric Single Oven Slide-In

PW2- Lot 298

QUICK INSTALL & CLEARANCES

For full installation directions/clearances please refer to the corresponding User Manual and Installation Guide.

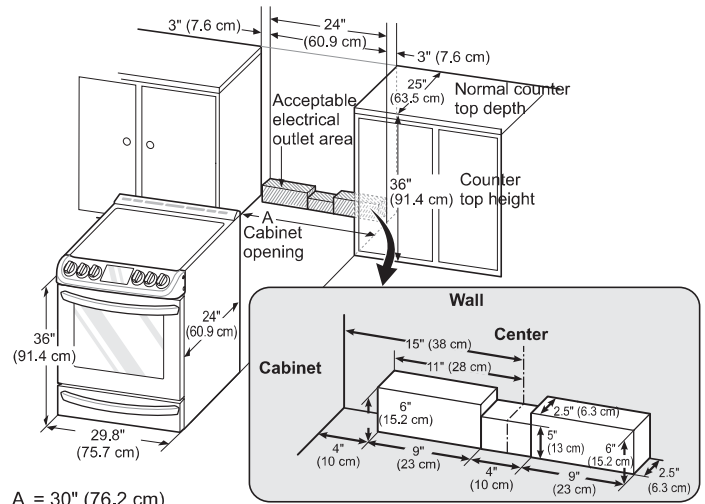
DIMENSIONS/CLEARANCES/WEIGHT

Cabinet Width (in)	30"
Overall Depth (in) - including handle	28 15/16"
Overall Height (in)	37 7/8"
Overall Width (in)	29 7/8"
Oven Interior Dimensions (in) (W x H x D)	24 7/8" x 21 3/8" x 20"
Height to Cooking Surface (in)	36"
Drawer Dimensions (in) (W x H x D)	22 3/16" x 4 1/2" x 16 3/8"
Carton Dimensions (in) (W x H x D)	32 31/32" x 44" x 30 17/32"

POWER/RATINGS

Amp Rating at 208V	47A
Amp Rating at 240V	48.3A
KW Rating at 208V	9.8kW
KW Rating at 240V	11.6kW

DIMENSIONS AND CLEARANCES



A = 30" (76.2 cm)

ELECTRICAL REQUIREMENTS

- This appliance must be installed and grounded on a branch circuit by a qualified technician in accordance with the National Electrical code ANSI/NFPA NO. 70 - latest edition.
- All wiring should conform to Local and NEC codes. This range requires a single-phase, 3 wire, A.C 120/208 V or 120/240 V 60 Hz electrical system. Use only a 3-conductor or a 4-conductor UL - listed range cord with closed-loop terminals, open-end spade lugs with upturned ends or similar termination. Do not install the power cord without a strain relief.
- A range cord rated at 40 amps with 120/240 minimum volt range is required. If a 50 amp range cord is used, it should be marked for use with 1 3/8" diameter connection openings. This appliance may be connected by means of a conduit or power cord. If a conduit is being used, check the Owners Manual for 3 wire conduit connections or 4 wire conduit connections.

Specified power-supply-cord kit rating

Range rating, watts		Specified rating of power supply-cord kit, amperes	Diameter (inches) of Range connection Opening	
120/240 volts 3-wire	120/208 volts 3-wire		Power cord	Conduit
8,750 - 16,500	7,801 - 12,500	40 or 50A	1 3/8"	1 1/8"
16,501 - 22,500	12,501 - 18,500	50	1 3/4"	1 3/8"



4 Wire receptacle (14-50R)



3 Wire receptacle (10-50R)

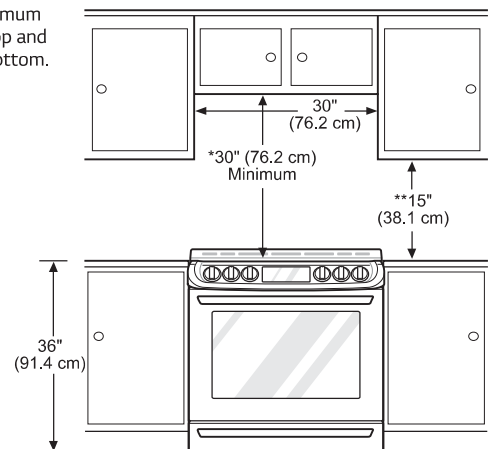
⚠ WARNING

- Allow 2 to 3 ft (61.0 cm to 91.4 cm) of slack in the line so that the range can be moved if servicing is ever necessary.
- The power supply cord and plug should not be modified. If it will not fit the outlet, have a proper outlet installed by a qualified electrician.
- Using an extension cord to connect the power is prohibited. Connect the power cord and plug directly.
- Electrical ground is required on this appliance.
- Make sure that the power cord is not pinched by the range or heavy objects. Failure to do so can result in serious burns or electrical shock.

MINIMUM DIMENSIONS

- * 30" (76.2 cm) minimum clearance between the top of the cooking surface and the bottom of an unprotected wood or metal cabinet; or 24" (60.9 cm) minimum when bottom of wood or metal cabinet is protected by not less than 1/4" (6.4 cm) flame retardant millboard covered with not less than no. 28 MSG sheet steel, 0.015" (0.381 mm) stainless steel, 0.024" (0.610 mm) aluminum or 0.020" (0.508 mm) copper.

- ** 15" (38.1 cm) minimum between countertop and adjacent cabinet bottom.

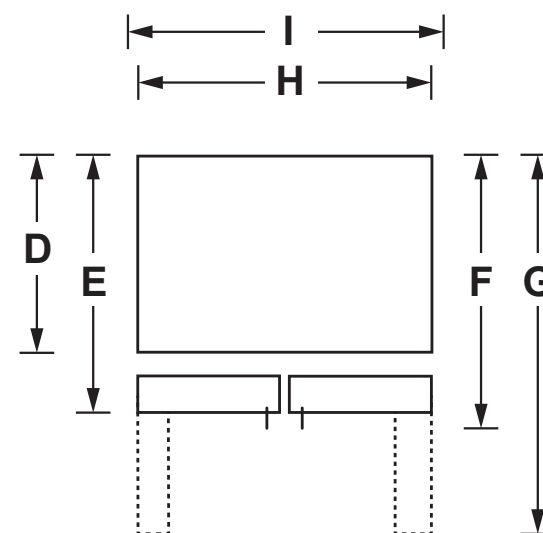
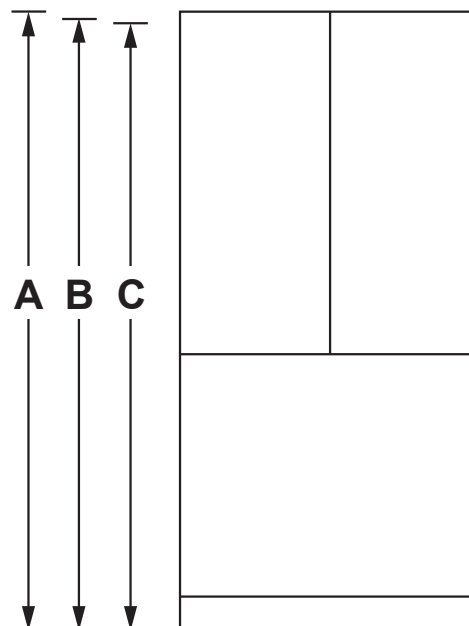


GNE27JGM/JMM/JYM

GE® ENERGY STAR® 27.0 Cu. Ft. French-Door Refrigerator

DIMENSIONS AND INSTALLATION INFORMATION (IN INCHES)

OVERALL DIMENSIONS	Height to top of door - crown or flat (in.) A	69-7/8
	Height to top of hinge (in.) B	69-3/4
	Height to top of case (in.) C	68-5/8
	Case depth without door (in.) D	29
	Case depth less door handle (in.) E	33-3/8
	Case depth with door handle (in.) F	35-7/8
	Depth with fresh food door open 90° (in.) G	48-3/8
	Width (in.) H	35-3/4
	Width with door open 90° inc. door handle (in.) I	43-3/4
AIR CLEARANCES	Each side (in.)	1/8
	Top (in.)	1
	Back (in.)	2



For answers to your Monogram, GE Café™ Series, GE Profile™ Series or GE Appliances product questions, visit our website at geappliances.com or call GE Answer Center® Service, 800.626.2000.



Listed by
Underwriters
Laboratories



As an ENERGY STAR® partner, GE has determined that this product meets the ENERGY STAR guidelines for energy efficiency.

GNE27JGM/JMM/JYM

GE® ENERGY STAR® 27.0 Cu. Ft. French-Door Refrigerator

FEATURES AND BENEFITS

27.0 cu. ft. capacity – Easily store large or bulk food items with three full-width shelves and large capacity

Internal water dispenser – Delivers filtered water with one touch

Factory-installed icemaker with water filtration system – Refrigerator comes ready to automatically create filtered ice

LED lighting – Find exactly what you've been looking for under crisp, clear lighting

Spill-proof shelves – A variety of shelf configurations provide additional options for food storage

Two humidity-controlled drawers and full-width drawer – Create the right environment for keeping fruits and vegetables fresh, while easily storing wider items like a party platter or a sheet cake

Quick Space shelf – Quickly slides out of the way to make room for tall items

Turbo Cool and Turbo Freeze settings – An extra boost of cold air restores interior to set temperature for optimum food freshness

Internal controls with actual-temperature display – Eliminate the guesswork of temperature setting with actual degrees displayed digitally

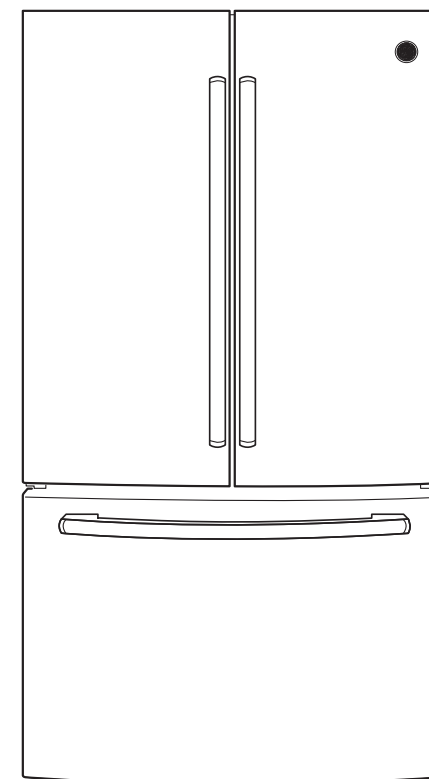
Advanced water filtration uses XWF replacement filter – Reduces trace pharmaceuticals from water and ice* (* Removes 98% of ibuprofen, atenolol, fluoxetine, progesterone and trimethoprim. These pharmaceuticals are not necessarily in all users' water)

Gallon door storage – Deep bins handle large containers in the door and free up valuable shelf space

Two-level freezer storage baskets – Baskets allow easy access to frozen foods

Door alarm – Enjoy peace of mind knowing the refrigerator door is never left open

Fingerprint resistant stainless – Easily wipe away smudges and fingerprints for a look that's always sparkling clean (for model GNE27JYMFS)



Model GNE27JGMWW – High-gloss White

Model GNE27JGMBB – High-gloss Black

Model GNE27JMMES – Slate

Model GNE27JSMSS – Stainless steel

Model GNE27JYMFS – Fingerprint resistant stainless



As an ENERGY STAR® partner, GE has determined that this product meets the ENERGY STAR guidelines for energy efficiency.

CORE

GUST

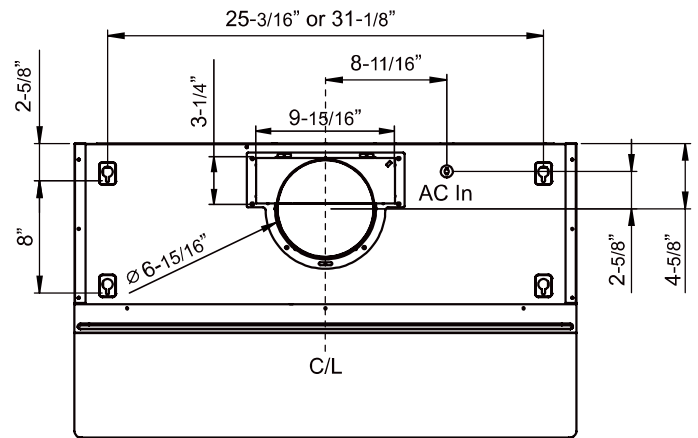
UNDER-CABINET

A discreet, European-style, professional-looking range hood, Gust adds fashion to under-cabinet installations. With its mechanical controls neatly tucked away below the canopy, Gust provides the subtlety its owners require. Its perfectly curved corners and

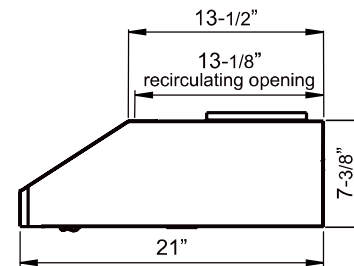
understated top-mounted return-air louver offer further evidence that Gust spares nothing when it comes to quality construction. Available with LumiLight LED lighting and optional recirculating kit.

ZEPHYR

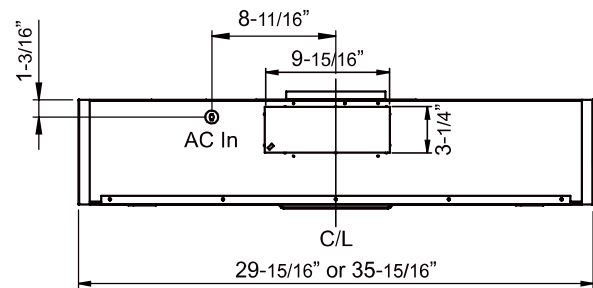
ZEPHYRONLINE.COM

PW2- Lot 298

TOP



SIDE



BACK

MODEL				
Stainless Steel	AK7100BS-BF	AK7100BS290-BF	AK7136BS-BF	AK7136BS290-BF
Size	30"	30"	36"	36"
BLOWER PERFORMANCE				
Blower CFM (Min. - Max.)	150 - 400	120 - 290	150 - 400	120 - 290
Sones (Min. - Max.)	2 - 5	1.1 - 3.2	2 - 5	1.1 - 3.2
FEATURES				
Controls	Mechanical Slide	Mechanical Slide	Mechanical Slide	Mechanical Slide
Speed Levels	3	3	3	3
Auto Delay-Off	No	No	No	No
Lighting	LumiLight LED, 6W x2	LumiLight LED, 6W x2	LumiLight LED, 6W x2	LumiLight LED, 6W x2
Dual-Level Lighting	Yes	Yes	Yes	Yes
Filters	Baffle x2	Baffle x2	Baffle x2	Baffle x2
Recirculating Option	Yes	Yes	Yes	Yes
DUCT SPECIFICATIONS				
Vertical Internal Blower	7" Round or 3-1/4" x 10"	7" Round or 3-1/4" x 10"	7" Round or 3-1/4" x 10"	7" Round or 3-1/4" x 10"
Horizontal Internal Blower	3-1/4" x 10"	3-1/4" x 10"	3-1/4" x 10"	3-1/4" x 10"
400 CFM AC POWER	120V, 60Hz at Max. 1.7A	120V, 60Hz at Max. 1.7A	120V, 60Hz at Max. 1.7A	120V, 60Hz at Max. 1.7A
290 CFM AC POWER	120V, 60Hz at Max. 1.55A	120V, 60Hz at Max. 1.55A	120V, 60Hz at Max. 1.55A	120V, 60Hz at Max. 1.55A
OPTIONAL ACCESSORIES				
Recirculating Kit	ZRC-0071	ZRC-0071	ZRC-0071	ZRC-0071
Make-Up Air Kit	MUA006A	MUA006A	MUA006A	MUA006A
Damper, 7" Round	AK00067	AK00067	AK00067	AK00067
MOUNTING HEIGHT RANGE*				
	24" - 32"	24" - 32"	24" - 32"	24" - 32"
WARRANTY				
	3 years parts, 1 year labor	3 years parts, 1 year labor	3 years parts, 1 year labor	3 years parts, 1 year labor

*Mounting height refers to distance between top of a 36" tall cooking surface and bottom of hood.

Installation Overview

- Preparing Cabinet Opening

Preparing Electrical Wiring

Preparing Water Supply Connection

Preparing the Dishwasher

Removing Lower Cover

Sliding the Dishwasher into Cabinet
- Leveling the Dishwasher

Securing the Dishwasher to Countertop

Connecting the Drain Hose

Connecting Water Supply

Connecting Power

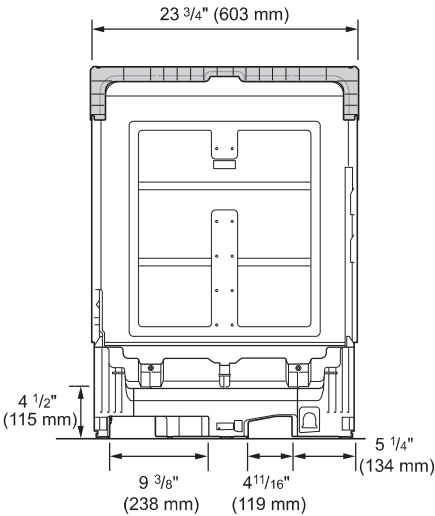
Final Check

PW2- Lot 298

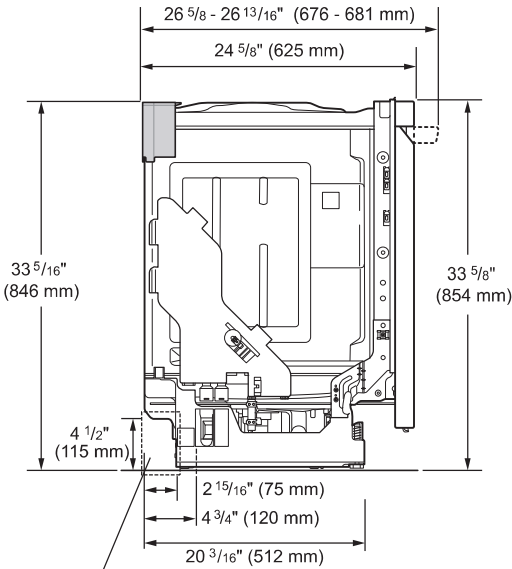
LG LDP6810SS Built-In
Undercounter
Dishwasher, 24"W

Product Dimensions

Back view



Side view



Water supply hose, drain hose and electric cable should be passed through this area.

NOTE

- For easiest installation, see marked areas above for water and electrical clearances in base of dishwasher.

Product Specifications

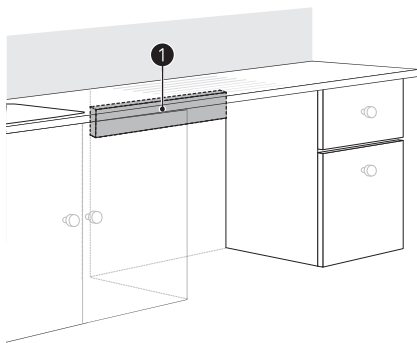
The appearance and specifications listed in this manual may vary due to constant product improvements.

Electrical requirement	120 V, 60 Hz AC only, minimum 15 A circuit breaker
Water pressure	20 - 80 psi (140 - 550 kPa)
Dimensions	23 3/4"(W) X 24 5/8"(D) X 33 5/8"(H) 603 mm(W) X 625 mm(D) X 854 mm(H)
Inlet water temperature	120 °F (49 °C) minimum, 149 °F (65 °C) maximum
Net weight	72 - 89 lbs. (33 - 40 kg)

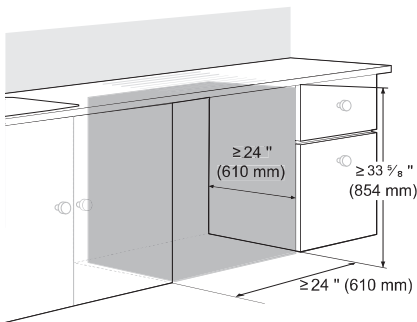
Preparing Cabinet Opening

This dishwasher is designed to fit a standard dishwasher opening. An opening may be needed on both sides to route plumbing and electrical connections.

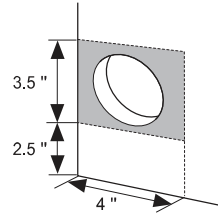
- To ensure proper drainage, install the dishwasher no more than 12 ft. (3.65 m) from the sink.
- The location must have sufficient space for the dishwasher door to open easily and provide at least 0.1" (2 mm) between the dishwasher and the cabinet sides.
- If installing the dishwasher in a corner, leave a minimum of 2" (50 mm) between the dishwasher and the adjacent wall.
- The adjacent wall must be free of obstructions.
- For flush installations only, you may remove the cabinet brace ① inside the cabinet.



- 1 Select a location as close to the sink as possible for easy connections to water supply line, drain hose and electrical connection.

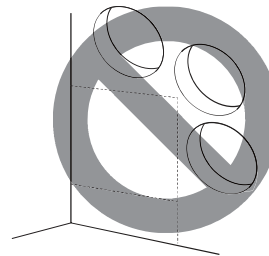


- 2 To allow for proper clearance of plumbing and electrical, use the template included with the literature to determine the clearance on the side of the cabinet where the cabinet meets the back wall. Using a 2 1/2" diameter hole saw, drill a hole in the target area as shown on the template.



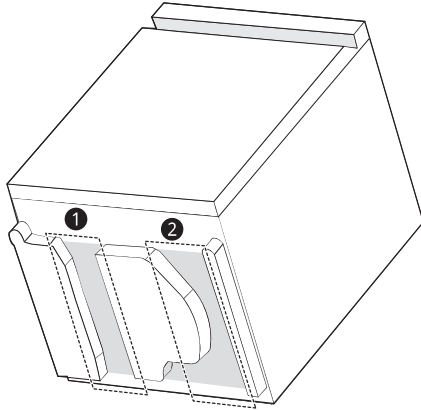
⚠ WARNING

- Installation damage is not covered by the warranty, and leaks caused by improper installation may result in property damage.
- Do not use existing holes unless they are in the target area.
- Failure to properly locate the hole for the water and drain lines may prevent the dishwasher from installing flush with the cabinets and could result in kinked, pinched, crushed, stressed or damaged lines.

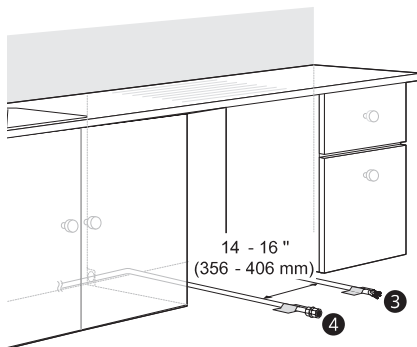


Preparing Water and Electrical Connections

There are 2 channels in the bottom of the dishwasher for routing the water and electrical connections. As shown in the bottom view below, channel ① is for the water supply line, and channel ② is for the electrical cable.



- 1 Turn off the house water supply and the circuit breaker or dedicated power before connecting the dishwasher.
- 2 Run the water supply line along the floor $6\frac{1}{2}$ – $7\frac{3}{4}$ " (165–197 mm) from the left side of the opening and tape it in place in front of the opening.
- 3 Run the electrical cable ③ along the floor 14–16" (356–406 mm) from the water supply line ④ and tape it in place.
 - The electrical outlet must be within 4 ft. (1.22 m) of either side of the dishwasher.
 - The best location for the electrical conduit is on the right side of the back wall. Re-route the electrical cable before installation if the electrical conduit pipe is longer than 3" (76 mm) and is centered on the back wall.



⚠ WARNING

Water Connection

- Do not reuse an old hose. Use only a new hose when installing the dishwasher. The old hose could leak or burst causing flooding and property damage. Contact an LG Customer Information Center for assistance in buying a new hose.

Electrical Connection

- Use a time-delay fuse or circuit breaker.
- Operate this appliance with the correct voltage as shown in this manual and on the rating plate.
- The wiring must be grounded properly. If in doubt, have it checked by a qualified electrician.
- Connect the appliance using 3-wires, including a ground wire.
- The appliance and outlet must be positioned so that the plug is easily accessible.
- Do not use an extension cable or adapter with this dishwasher.
- Do not overload the outlet with more than one appliance.
- The included 16AWG wire nuts should be used.
- It is the personal responsibility and obligation of the product owner to have a proper outlet installed by a qualified electrician.

⚠ CAUTION

- When connecting the dishwasher water supply line to the house water supply, sealing tape or compound should be used on pipe threads to avoid leaks. Tape or compound should not be used on compression fittings.
- Connect the dishwasher to a hot water supply with a temperature range between 120 °F (49 °C) and 149 °F (65 °C). This temperature range provides the best washing results and shortest cycle time. To prevent damage to dishes, the temperature should not exceed 149 °F (65 °C).
- Water supply pressure must be between 20 psi and 80 psi (140–550 kPa). If the water supply pressure exceeds 80 psi, a pressure reducing valve must be installed. Otherwise premature failure of the inlet valve may occur.

LG LAUNDRY

PW2- Lot 298

DLEX4200_ / DLGX4201_

7.4 cu.ft. Front Load Dryer with TurboSteam™ and Built-In Intelligence

7.4 cu. ft. Ultra Large Capacity
 TurboSteam™ Technology
 AI Fabric Sensor/ Smart Pairing™
 LG ThinQ® Technology / Proactive Customer Care
 Tempered Glass Door
 FlowSense™ Duct Clogging and Lint Filter Indicators
 ENERGY STAR® Certified
 Closet Depth
 LoDecibel™ Quiet Operation
 Reversible Door
 Wrinkle Care Option

AVAILABLE COLORS



Enjoy new ways to control your home with LG smart appliances

- Use the ThinQ® app to start the laundry while you're out
- Get alerts when the cycle is finished
- With Smart Pairing™, the washer can tell the dryer to select a compatible drying cycle

LG ThinQ®


SUMMARY		FABRIC CARE FEATURES		POWER SOURCE	
Type	Front Load Dryer	A.I Dry	Yes	Ratings	CSA Listed
Capacity	7.4 cu. ft.	Sensor Dry	Yes	Electrical Requirements	120V, 15 Amps (Gas) / 240V 30 Amps (Electric)
Matching Washer	WM4200HWA, WM4200HBA	Precise Temperature Control with Variable Heater	Yes	Type	Electric, Gas
Sensor Dry	Yes	Steam	TurboSteam™	BTU Rating	20,000 Feet
Steam	Yes	CONVENIENCE FEATURES		OPTIONS	
Color	White (W), Black Steel (B)	3 Minute Installation Check	Yes	LP Conversion Kit	383EEL3002D
APPEARANCE		LoDecibel™ Quiet Operation	Yes	Side Venting Kit	3911EZ9131X
Intelligent Electronic Controls with LED Display	Yes	End of Cycle Signal	Yes	Pedestal	WDP4W, WDP4B
Dial-A-Cycle™	Yes	Drum Light	Yes	Pedestal (WxHxD)	27 x 14 1/8 x 30 3/4 (50 1/2 D with door open)
Touch Buttons	Yes	Reversible Door	Yes	DIMENSIONS (ELECTRIC)	
DRYER PROGRAMS		FlowSense™ Duct Clogging Indicator	Yes	Product (WxHxD)	27" x 39" x 30 1/8"
No. of Programs	14	Wrinkle Care Option	Yes	Depth with Door Open	51 3/8"
Programs (Sensor Dry)	Normal, Heavy Duty, Bedding, Small Load, Anti Bacterial, Steam-Sanitary™, SteamFresh™, Perm Press, Delicates, Sportswear, Towels, Speed Dry (Manual Dry), Air Dry (Manual Dry), Downloaded	Child Lock	Yes	Carton (WxHxD)	29 1/2" x 42 1/4" x 31 1/4"
No. of Options	12	Venting Option	Electric: 4 Way Venting / Gas: 3 Way Venting	Weight (Product)	125.3 lbs.
Options	More Time, Less Time, Damp Dry Signal, Wrinkle Care, Control Lock, Wi-Fi, Energy Saver, TurboSteam™, Reduce Static, Remote Start, Drum Light, Signal	4 Adjustable Legs	Yes	Weight (Carton)	142.6 lbs.
Temperature Settings	High, Med.High, Medium, Low, Ultra Low	Remaining Time Display/Status Indicator(s)	Yes	DIMENSIONS (GAS)	
Drying Levels	Very Dry, More Dry, Normal Dry, Less Dry, Damp Dry	ThinQ® TECHNOLOGY		Product (WxHxD)	27" x 39" x 30 1/8"
Manual Dry Times	60 min., 50 min., 40 min., 30 min., 20 min., More Time/Less Time	SmartDiagnosis™ (v3.0)	Yes	Depth with Door Open	51 3/8"
		Wi-Fi	Yes	Carton (WxHxD)	29 1/2" x 42 1/4" x 31 1/4"
		Remote Start and Cycle Monitor	Yes	Weight (Product)	139.34 lbs.
		Energy Monitoring	Yes (Wi-Fi)	Weight (Carton)	155.0 lbs.
		ENERGY		LIMITED WARRANTY	
		ENERGY STAR® Certified	Yes	Parts & Labor	1 Year
		CEF	Electric: 3.94 / Gas: 3.49	Drum	3 Years
		MATERIALS AND FINISHES		UPC CODES	
		Aluminized Alloy Steel Drum	Yes	DLEX4200W (White)	048231028417
		Tub Rear	Painted	DLGX4201W (White)	048231028424
		Cabinet	Painted Steel	WM4200HWA (White)	048231028301
		Door	Tempered Glass Door	DLEX4200B (Black Steel)	048231028394
		All Available Colors	White (W), Black Steel (B)	DLGX4201B (Black Steel)	048231028400
				WM4200HBA (Black Steel)	048231028295

LG LAUNDRY

WM4100HBA

5.2 cu. ft. Capacity Front Load Washer

TurboWash™ 360 Technology

AI DD™

Steam Technology

ENERGY STAR® Qualified

SmartDiagnosis™

Touch Control Panel

ThinQ™ Technology (Wi-Fi Enabled)

Enjoy new ways to control your home with LG smart appliances

- LG ThinQ™**
- Start the laundry while you're out shopping
 - Get alerts when the cycle is finished
 - Works with the LG ThinQ® app



CAPACITY	
Capacity (cu.ft.)	5.2
APPEARANCE	
Design Look	Front Control
Intelligent Electronic Controls with LED Display	•
Touch Buttons	•
Dial-A-Cycle™	•
ENERGY	
ENERGY STAR® Qualified	•
CEE Tier	2
DRYING PROGRAMS	
No. of Programs - 14	Normal, Perm. Press, Heavy Duty, Delicates, Towels, Speed Wash, Drain+Spin, Bedding, Tub Clean, Bright Whites™, Sanitary, Allergiene™ Sportswear, Downloaded
No. of Options - 14	TurboWash™, Steam, Fresh Care, Pre-wash, Remote Start, Delay Wash, Wi-Fi, Add Item, Cold Wash, Extra Rinse, Rinse+Spin, Control Lock, Spin Only, Signal
Temperature Settings	5 Extra Hot, Hot, Warm, Cold, Tap Cold
Spin Speeds	5 Extra High, High, Medium, Low, No Spin
Water Levels	Load Sensing
Soil Levels	5
FABRIC CARE FEATURES	
AI DD™	•
TurboWash™ 360 Technology	•
Steam Technology	•
Allergiene™ Cycle	•
Sanitary Cycle	•
ColdWash™ Option	•
CONVENIENCE FEATURES	
4 Tray Dispenser	Prewash, Main Wash (with liquid detergent cup), Bleach, Fabric Softener
TrueBalance™ Anti-Vibration System	•
Load Sense	•
Control Lock	•
Auto Suds Removal	•
Leveling Legs	4 Adjustable Legs
ThinQ® TECHNOLOGY	
SmartDiagnosis™ (v3.0)	•
Wi-Fi	•
Remote Start and Cycle Monitor	•
Energy Monitoring	•

PW2- Lot 298



Tub Clean Coach	•
MOTOR	
Motor Type	Inverter Direct Drive Motor
Motor Speed	Variable
Max RPM	1,300
Axis	Horizontal
MATERIALS AND FINISHES	
NeveRust™ Stainless Steel Drum	•
Cabinet	PCM
Control Panel	Plastic
Top Plate	Painted
Door Cover	Tempered Glass Door
Door / Rim	Glass/Chrome
All Available Colours	Black Steel (B)
POWER SOURCE	
Ratings	UL Listed
Electrical Requirements	120V, 10 Amps
Type	Electric
OPTIONS	
Pedestal	WDP4B 27" x 14 1/8" x 30 3/4"
SideKick™ Pedestal Washer	WD100CB 27" x 14 1/8" x 30 3/4"
Stacking Kit	KSTK1
DIMENSIONS	
Product (WxHxD)	27" x 39" x 30 1/4" 55" (With door open)
Carton (WxHxD)	29 23/32" x 42 27/32" x 31 17/32"
Weight (Product/Carton)	198.4 lbs / 212.1 lbs
LIMITED WARRANTY	
1 Year Parts and Labour, 3 Years on Drum, 10 Years on Direct Drive Motor	
UPC CODES	
WM4100HBA	772454073250
DLEX4200B	772454073267
DLGX4201B	772454073366
WD100CB	772454071805
WDP4B	048231026451
KSTK1	772454059896

bathroom / Sink

PW2- Lot 298

KITANO

Two Handle Centreset Bathroom Faucet

MODEL#: 2563LF-BL-LPU



Finish: **Matte Black**



PW2- Lot 298

- 3-hole 4in. installation
- Metal lever handles
- 50/50 pop-up (for non-LPU models only)



PW2- Lot 298

STRYKE™

14 Series Shower Only

MODEL#: T142766-BL

- Backed by Delta Faucet's Lifetime Limited Warranty



WaterSense® Labeled

SHOWER HEAD(S)

Finish: **Matte Black**

Rough Valve



MultiChoice Universal
Tub / Shower Rough -
Universal Inlets /
Outlets

MODEL#: R10000-UN

Base Part





14 Series Shower Only
MODEL#: T142766-BL

PW2- Lot 298

Product Support, Repair Parts & Technical Specifications

[View Maintenance & Installation Sheet](#)

[View Technical Specifications](#)

[View Parts & Accessories Diagram](#)

Installation Information

Flow Rate :

1.75 gpm @ 80 psi, 6.6 L/min @ 552 kPa

Spray Settings : H2Okinetic ® Spray



PW2- Lot 298

STRYKE™

Three Hole Roman Tub Trim

MODEL#: T2776-BL



Finish: Matte Black



Rough Valve



Two Handle Flexible
Mount - PEX Crimp
MODEL#: R2707-PX

Base Part



Three Hole Roman Tub
Trim
MODEL#: T2776-BL

Product Support, Repair Parts & Technical Specifications

[View Maintenance & Installation Sheet](#)

[View Technical Specifications](#)

[View Parts & Accessories Diagram](#)

Installation Information

PW2- Lot 298

Number of Handles : singlehandle

Spout Height : 9-1/4"

Spout Length : 9-23/32"

Deck to Outlet : 6-29/32"

Deck Thickness : 2.5"



Are you browsing the correct region?
Current region: Canada | Change to: USA



ALLUSION

PW2- Lot 298

Single Robe Hook — Matte Black — SKU: 04-32501BLK



- Versatile design to suit any bathroom
- Concealed screw mount ensures a sleek contemporary installation
- Includes mounting hardware for easy setup
- Coordinates with the Taymor Catana or Equinox door lever with square rose

FINISH



SELECT A PRODUCT VARIATION

ALLUSION SINGLE ROBE HOOK

Taymor Celebrates 70th Anniversary

Since 1948, Taymor has proudly designed and manufactured architectural hardware products of exceptional design, quality and value.



Are you browsing the correct region?
Current region: Canada | Change to: USA



/ [Bathware](#) / Allusion

PW2- Lot 298

ALLUSION

Paper Holder — Matte Black — SKU: 04-32548BLK



- Versatile design to suit any bathroom
- Concealed screw mount ensures a sleek contemporary installation
- Includes mounting hardware for easy setup
- Coordinates with the Taymor Catana or Equinox door lever with square rose

FINISH



SELECT A PRODUCT VARIATION

ALLUSION PAPER HOLDER

Taymor Celebrates 70th Anniversary

Since 1948, Taymor has proudly designed and manufactured architectural hardware products of exceptional design, quality and



Are you browsing the correct region?
Current region: Canada | Change to: USA



/ [Bathware](#) / Allusion

PW2- Lot 298

ALLUSION

Towel Bar — Matte Black — SKU: 04-32524BLK



- Versatile design to suit any bathroom
- Concealed screw mount ensures a sleek contemporary installation
- Includes mounting hardware for easy setup
- Coordinates with the Taymor Catana or Equinox door lever with square rose

FINISH



DIMENSIONS

24"



SELECT A PRODUCT VARIATION

ALLUSION TOWEL BAR

Taymor Celebrates 70th Anniversary

