

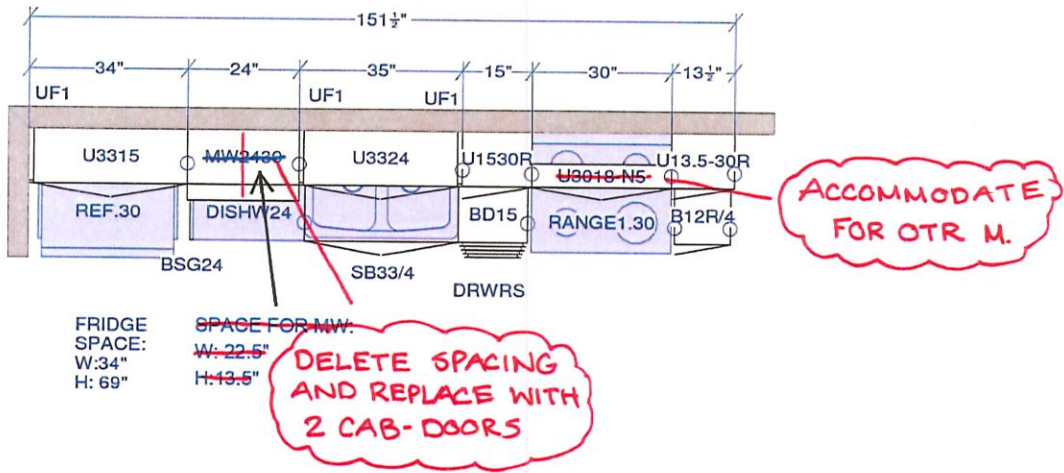
DCR PHOENIX HOMES
TERRA FLATS

MODEL - TYPE C (1st FLOOR)

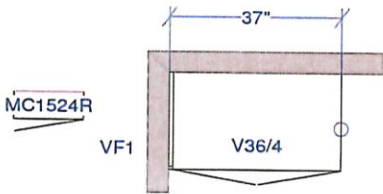
KITCHEN / VANITIES

MOUNTING HEIGHT - 84

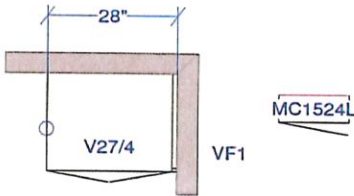
- LINE 1
HARDWARE - U1
STANDARD WHITE INTERIOR
METAL DRAWER BOX
3 PCS - 5/8" KICK - FIN. BOTH ENDS
2 PCS - LOOSE FILLER - 6 x 96
2 PCS - FLAT MOULDING




DS DS



MAIN BATH



ENSUITE

All dimensions _size designations given are subject to verification on job site and adjustment to fit job conditions.		This is an original design and must not be released or copied unless applicable fee has been paid or job order placed.	Designed: 2017-04-04 Printed: 2017-04-07	
TYPE C		All	Drawing #: 1	No Scale.