

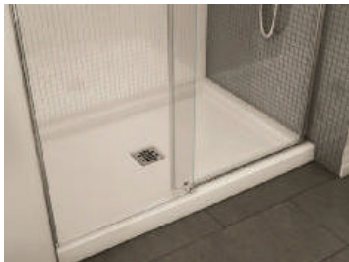
PW 157

MAAX SUBMITTAL SPECIFICATIONS

HALO SLIDING DOOR 44 1/2

MODEL NUMBER 138996

DIMENSIONS: 47" x 78 3/4" Glass
Water Capacity: n/a



Project :
Contractor :
MAAX Representative : Tel :
Date :

www.maax.com

Vivez l'expérience
MAAX[®]
Enjoy the experience

STANDARD FEATURES

- 78 3/4" high luxury clear glass panel 8mm (5/16") tempered glass with chrome handle & hardware Ball bearing roller technology for smooth and quiet opening 48" & 60" reversible door for left or right opening Also available in a corner configuration

OPTIONS

- n/a

UNIQUE FEATURES

- Reversible Header
- Ball Bearing Roller

SYSTEMS

CERTIFICATIONS

Maax products adhere to one or more of the following certifications:



2012-05-05

MAAX SUBMITTAL SPECIFICATIONS

HALO SLIDING DOOR 44 1/2

MODEL NUMBER 138996

Vivez l'expérience
MAAX
Enjoy the experience

TECHNICAL DRAWINGS

All dimensions are approximate. Structure measurements
must be verified against the unit to ensure proper fit.

2012-05-05

DS
RT

PW 157

CILA ONE PIECE TOILET

3.5LPF / 0.92GPF

4710BOXU Unlined Tank

PRODUCT SPECS

- Ultra high efficiency toilet
- 3.5Lpf/0.92Gpf
- Elongated bowl with concealed skirted trapway
- Vitreous china
- 17" bowl height
- Soft white tank lever
- 12" (305mm) Rough-in
- 2" Fully glazed ball pass trapway
- 3" Flapper
- Siphone jet flush action
- Water surface: 7 $\frac{5}{8}$ " x 5 $\frac{5}{8}$ " (198mm x 143mm)
- Floor bolts and decorative soft while side caps included
- Smooth close toilet seat included

COMPLIANCE CERTIFICATIONS

- Meets or exceeds the following:
- IAPMO cUPC
 - US EPA WaterSense
 - ASME A 112.19.2 / CSA B45.1
 - ANSI A117.1 ADA Guideline
 - MaP Premium tested 800g
 - IAPMO Green, Calgreen and LEED Compliant

SHIPPING

Cube	9.39
GW	92.5 lbs

DIMENSIONS

391mm W x 725mm D x 765mm H
15 $\frac{3}{8}$ " W x 28 $\frac{1}{2}$ " D x 30 $\frac{1}{8}$ " H



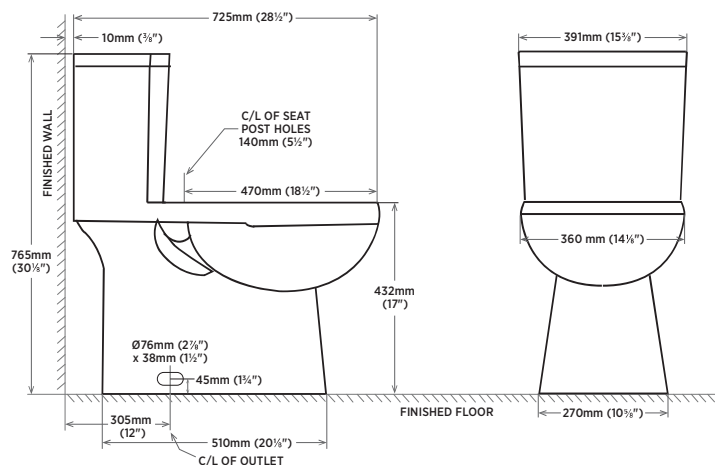
TO BE SPECIFIED

Colour:
☒ Soft White

NOTES: This toilet is designed to rough-in at a minimum dimension of 305mm (12") from finished wall to C/L of outlet. Supply line not included with fixture and must be ordered separately.

Important: Dimensions of fixtures are nominal and may vary within the range of tolerances established by ASME standard A112.19.2. These measurements are subject to change or cancellation. No responsibility is assumed for use of superseded or voided pages.

Products are designed to comply ADA/ANSI A117.1 Standard. It shall be the responsibility of the installer to comply with the local disability codes and standards prior to installing the product.



contrac

CANADA 5970 CHEDWORTH WAY, UNIT B, MISSISSAUGA, ONTARIO, CANADA L5R 4G5 | CONTRAC.CA
USA 6241 NORTHWIND PARKWAY, HOBART, INDIANA, USA 46342 | CONTRAC.US

REVISED OCTOBER 2019

PW 157

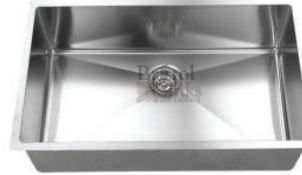


Bristol Sinks
<http://bristolsinks.com/>

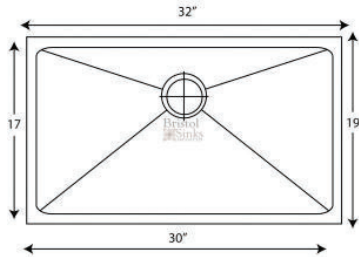
PRODUCT NAME : B926 Undermount Sink w/ 15mm Radius Corners
MODEL : B926
PRICE : \$980.00
SKU : B926
WEIGHT : 35lbs.

DESCRIPTION

Single Bowl Undermount Sink with 15mm radius corners
Outside dimensions: 32 x 19 x 10"
Minimum Cabinet Size: 33"
Stainless Steel Single Bowl Sink
16 Gauge Type 304 Stainless Steel
Stone Guard undercoating over rubber pad
3 1/2" drain opening
Supplied with installation clip, template and strainer
cUPC certified



ADDITIONAL IMAGES



PW 157

76

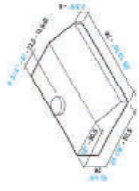


EROS

If you are looking for great performance and don't want the hassle of modifying your kitchen, the Eros offers a powerful motor in the corner area of an under cabinet hood.

Eros

Wall	30" x 76 cm
Motors and control	600 CFM 4 speed Mechanical controls
Filter	304st 23x250 mm
Lighting: Fluorescent	2x20 W
Duct specification	4.3x6" - 14 cm



PFU0000553 Eros Wall 30" 600 CFM

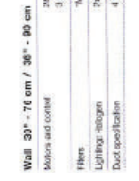


VULCANO

The Vulcano is a twist on the conventional pyramid shape with softer angles, resulting in a classic elegant finish.

Vulcano

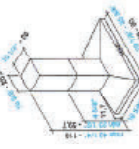
Wall	24" x 66 cm
Motors and control	280 CFM 3 speed Mechanical controls
Filter	"Metallic"
Lighting: Halogen	2x20 W
Duct specification	4.3x6" - 12 cm



PFU0000553 Vulcano Wall 24" 280 CFM
PFU0000553 Vulcano Wall 30" 280 CFM
PFU0000553 Vulcano Wall 36" 280 CFM

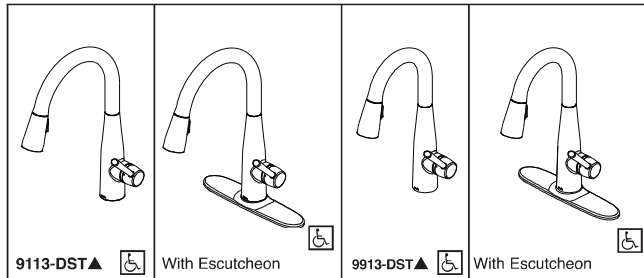
Vulcano xl

Wall	30" x 76 cm / 36" x 90 cm
Motors and control	600 CFM 4 speed Electronic controls
Filter	"Metal"
Lighting: Halogen	2x20 W
Duct specification	6" - 18 cm



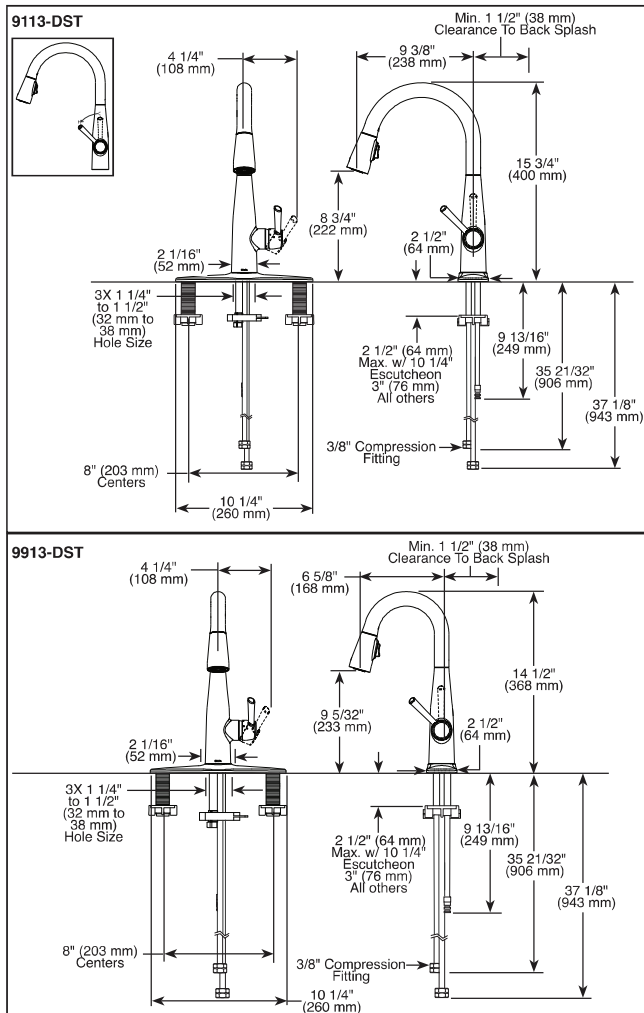
PFU0000553 Vulcano xl Wall 30" 600 CFM
PFU0000553 Vulcano xl Wall 36" 600 CFM

PW 157



Submitted Model No.:

Specific Features:



▲ Designate proper finish suffix

Delta reserves the right (1) to make changes in specifications and materials, and (2) to change or discontinue models, both without notice or obligation. Dimensions are for reference only. See current full-line price book or www.deltafaucet.com for finish options and product availability.

DSP-K-9113-DST Rev. B



see what Delta can do™

KITCHEN FAUCETS

- Essa™ Collection
- Single Handle Pull-Down

FEATURES:

- DIAMOND Seal® Technology
- MagnaTite® Magnetic Docking
- Touch-Clean® Sprayhead

STANDARD SPECIFICATIONS:

- Maximum 1.8 gpm @ 60 psi, 6.8 L/min @ 414 kPa
- One or three hole mount (Escutcheon included with kitchen models. For prep models, order separately)
- Diamond coated ceramic cartridge
- 3/8" O.D. straight, staggered PEX supply lines
- Spout rotates 360°
- Red/Blue indicator markings
- Two-function wand; Aerated stream or spray
- Dual integral check valves in sprayer

WARRANTY

- Parts and Finish - Lifetime limited warranty; or for commercial purchasers, 10 years for multi-family residential (apartments and condominiums) and 5 years for all other commercial uses, in each case from the date of purchase.
- Electronic Parts and Batteries (if applicable) - 5 years from the date of purchase; or for commercial purchasers, 1 year from the date of purchase. No warranty is provided on batteries.

COMPLIES WITH:

- ASME A112.18.1 / CSA B125.1
- ASME A112.18.6
- Indicates compliance to ICC/ANSI A117.1
- Verified compliant with .25% weighted average Pb content regulations.

Delta Faucet Company

55 E. 111th Street, Indianapolis, IN 46280
 350 South Edgeware Road, St. Thomas, ON N5P 4L1
 © 2019 Delta Faucet Company

