

MAAX SUBMITTAL SPECIFICATIONS

JAZZ F

MODEL NUMBER 105359

DIMENSIONS: 66" x 36" x 24" Acrylic  
Water Capacity: Maximum 76 G Minimum 58 G



Project : .....  
Contractor : .....  
MAAX Representative : ..... Tel : .....  
Date : .....

[www.maax.com](http://www.maax.com)

Vivez l'expérience  
**MAAX**  
Enjoy the experience

STANDARD FEATURES

- Unique feature: air massage system available
- Deep soak bathing for ultimate relaxation
- Relaxing backrest
- Deck for faucet
- 4 self-leveling legs for ease of installation
- Center drain
- Freestanding installation

OPTIONS

- Fjord bathtub faucet with hand shower
- Water pipe inlets (Fjord)
- Fjord 8-in. widespread lavatory
- White foam cushion
- Two chromatherapy lights
- Flexible main hose 15 ft for electronic control

UNIQUE FEATURES

- 1 Tub - 2 Pieces

SYSTEMS

 Aerofeel

DOOR SELECTION

Combine with MAAX's complete shower door offering visit [www.maax.com](http://www.maax.com)

CERTIFICATIONS

Maax products adhere to one or more of the following certifications:



2012-05-05

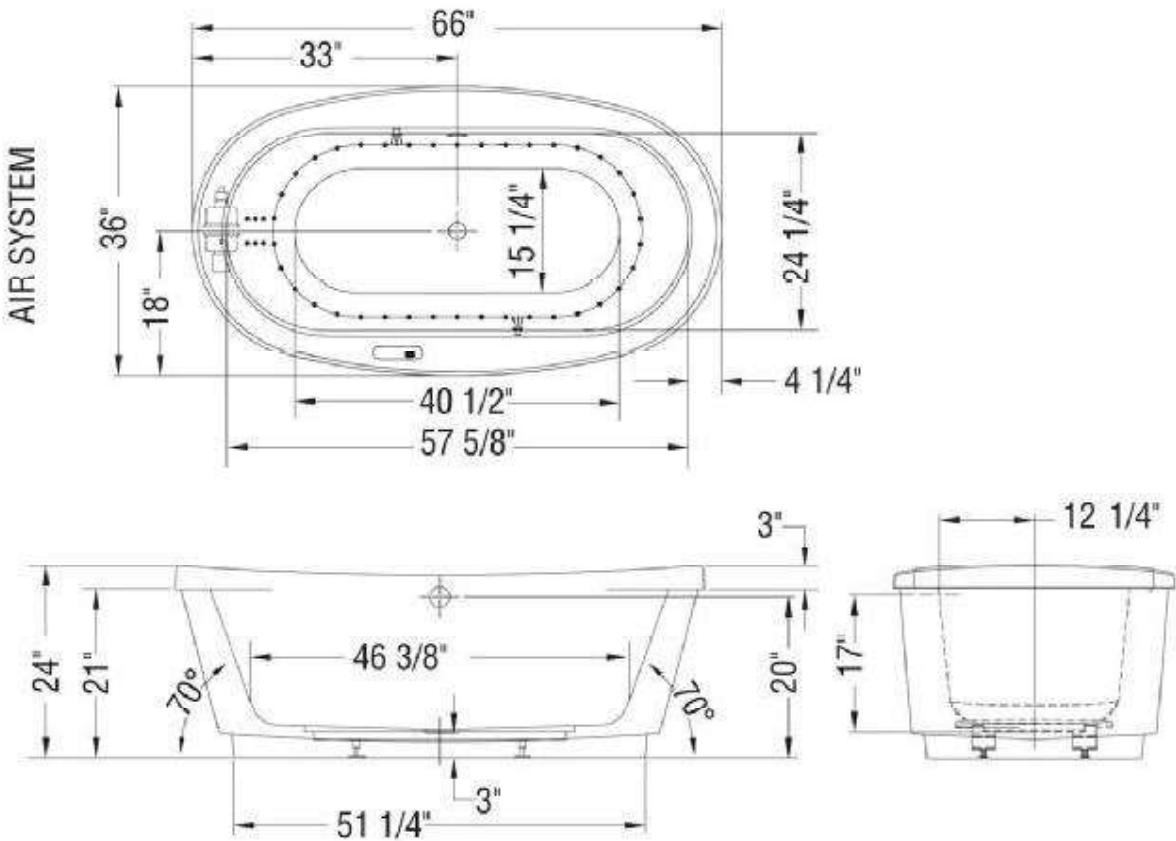
DS  
 DS

MAAX SUBMITTAL SPECIFICATIONS

JAZZ F

MODEL NUMBER 105359

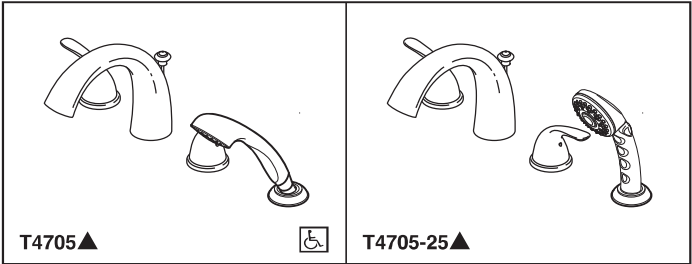
TECHNICAL DRAWINGS



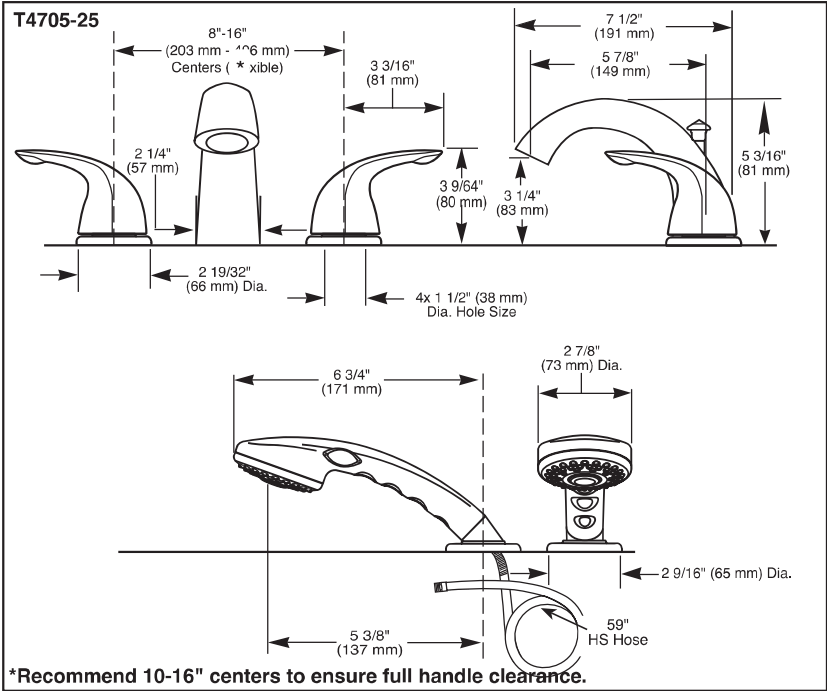
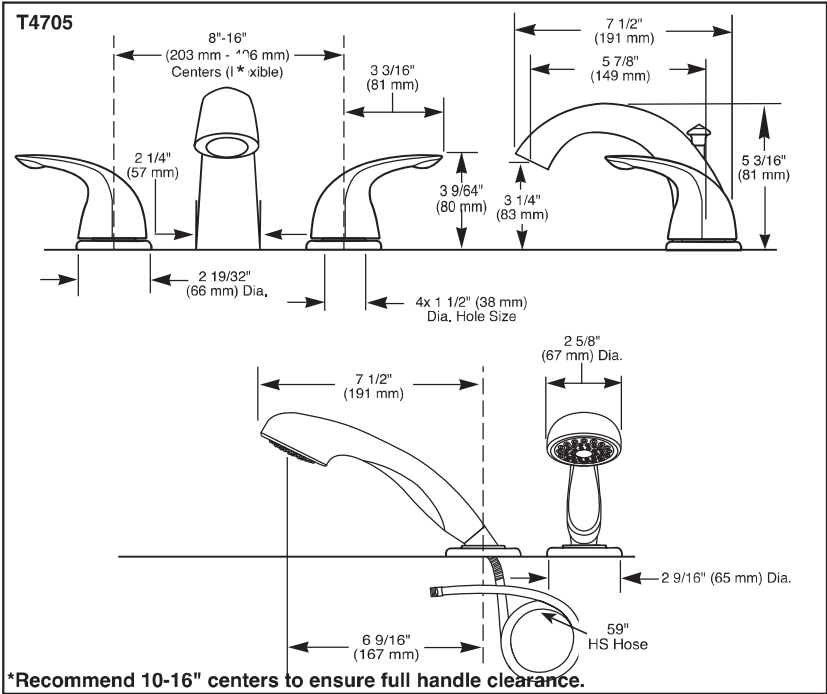
( • ): Indicates airjets positioning  
( ✎ ): Indicates chromatherapy light positioning  
All dimensions are approximate. Structure measurements must be verified against the unit to ensure proper fit.

All dimensions are approximate. Structure measurements must be verified against the unit to ensure proper fit.

DS DS  
Chad [Signature]



Submitted Model No.: \_\_\_\_\_  
Specific Features: \_\_\_\_\_



▲ Designate proper finish suffix  
Delta reserves the right (1) to make changes in specifications and materials, and (2) to change or discontinue models, both without notice or obligation. Dimensions are for reference only. See current full-line price book or [www.deltafaucet.com](http://www.deltafaucet.com) for finish options and product availability.  
DSP-B-T4705 Rev. E



see what Delta can do™

# ROMAN TUB/WHIRLPOOL FAUCET TRIM

- Classic Collection
- Four Hole Installation (T4705 Series)

## STANDARD SPECIFICATIONS:

- T4705 models flow 1.75 gpm @ 80 psi, 6.6 L/min @ 550 kPa through handshower
- T4705-25 models flow 2.5 gpm @ 80 psi, 9.5 L/min @ 550 kPa through handshower
- Trim only for two handle Roman Tub faucet for concealed mounting
- Temperature and volume controlled with handles
- Rough-In kit must also be ordered to complete installation
  - R4707 for four hole
  - R2700 or R2707 for three hole
  - RP23601 for three hole 10" fixed installationThere are separate specification sheets on each rough-in kit if more details are required
- Handshower includes double check valves for backflow prevention

## WARRANTY

- Lifetime limited warranty on parts (other than electronic parts and batteries) and finishes: or, for commercial users, for 5 years from date of purchase.
- 5 year limited warranty on electronic parts (other than batteries); or, for commercial users, for 1 year from the date of purchase. No warranty is provided on batteries.



## COMPLETE VALVE COMPLIES WITH:

- ASME A112.18.1 / CSA B125.1
- Indicates compliance to ICC/ANSI A117.1 - Valve control only
- EPA WaterSense® - Applies to handshower only - RP46683\* (T4705)

DS  
*Chad*  
DS  
*[Signature]*

**Delta Faucet Company**  
55 E. 111th Street, Indianapolis, IN 46280  
350 South Edgeware Road, St. Thomas, ON N5P 4L1  
© 2017 Delta Faucet Company



SABINA

Version  
FISAB28B3SS / Built-in – 28"  
(72 cm) 280 CFM

Collection  
Potenza

EAN code  
8034122500553

FEATURES

Slider  
LED lighting  
Metallic grease filter,  
removable and washable  
Optional charcoal filter

OPTIONAL ACCESSORIES

KACL.815  
Protective cleaning cloths for  
stainless steel (box 10 pcs)  
103050102  
Round charcoal filter Ø212 mm -  
Type 2

TECHNICAL FEATURES

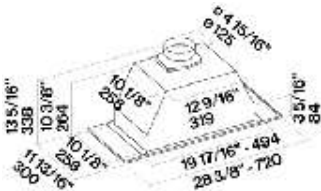
Installation type  
Built-in  
Dimensions  
28 / 72 cm  
Finish  
Scotch brite stainless steel  
Motor  
280 CFM  
Type of control  
Slider  
Speed settings  
3  
Lighting  
Led 2x1,2 W - 3200 K  
Filter  
2 x METALLIC FILTER A.P. AISI  
244,8x190,3  
Minimum distance  
Gas hob: 25 in  
Electric hob: 21 in

PACKAGING:WEIGHTS AND  
VOLUMES

Gross weight  
29 lbs  
Net weight  
23 lbs  
Volumes  
4 ft³  
Packaging size  
Length  
32 in  
Height  
14 in  
Depth  
16 in

CONSUMPTION AND  
CONNECTION FEATURES

Maximum consumption  
150 W  
Plug type  
standard



DS DS  
Chad