



Fireplace Design Studio

Ascent™ Linear 46
(BL46)



WT2-LOT 20

Glass Media Kits
Topaz Glass Embers

Safety Barrier
Standard Black

Surround
Classic Black

DS DS
S. FRL

WT- LOT 20 - MAIN BATH

Exhibit 6032 IFS

Model number: 105520

Dimensions: 60" x 32" x 18" Installation: Alcove Material: Acrylic



Standard Features:

- Rectangular shape bathtub in alcove installation
- Available in Above-the-Floor Rough (AFR) or not
- Minimalist look with discreet armrests and textured floor
- Integrated tiling flange
- Integrated skirt with access panel when equipped with a system

Product characteristics:

- Made in North America
- Elegant design
- Integrated Tiling Flange and Skirt

Systems:

- Whirlpool
- Combined Whirlpool/Aeroeffect
- Aeroeffect

Warranty:

25 Years

Standard colors:

White (001)

Bone (004)

Biscuit (007)

Certifications

MAAX products adhere to one or more of the following certifications:

UL

ICC
ES
PMG

Recommended products (Visit our website for a complete list of our recommended doors)

No	Description
139398	Halo Sliding Tub Door 56 1/2-59 x 59 in. 8 mm
135330	Incognito 57 Shaker Sliding Tub Door 56-59 x 56 3/4 in. 8 mm
139351	Incognito 57 Sliding Tub Door 56-59 x 56 3/4 in. 6 mm

Options (Visit our website for a complete list of our options)

No	Description
<input type="checkbox"/> OPT 10019	Removable access panel
<input type="checkbox"/> OPT 10053	Chromatherapy
<input type="checkbox"/> OPT 10095	Water heater assembly
<input type="checkbox"/> OPT 10106	Metal trim kit for whirlpool and combined systems
<input type="checkbox"/> OPT 20029	Metal trim kit for Air Push Control

DS

S. FRL

DS

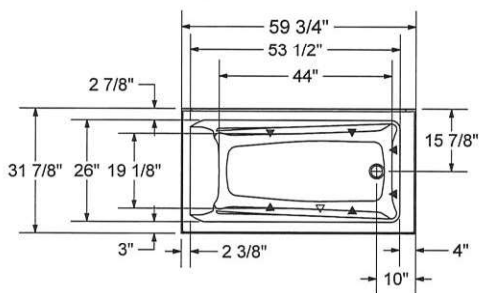
WT2-LOT 20

Exhibit 6032 IFS

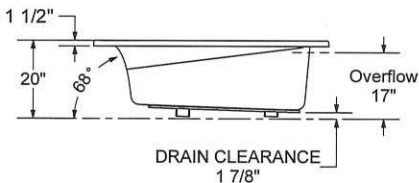
Model number: 105520

Dimensions: 60" x 32" x 18" Installation: Alcove

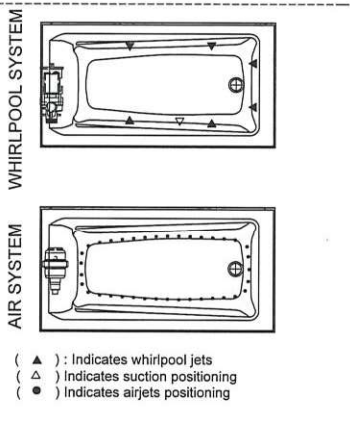
Material: Acrylic



1" Single Integrated tiling flange (shown)
2" Double Integrated tiling flange (not shown)
Drop-in model (Shown)



Wood support design may vary.
Single Integrated tiling flange: 1" height x 1/4" thickness (shown)
Double Integrated tiling flange: 2" height (not shown)
All dimensions are approximate.
Structure measurement must be verified against the unit to ensure proper fit.



Dimensions:

59 3/4 x 32 x 17 3/4 in.
(1518 x 813 x 451 mm)

Water capacity:

46 gallons - 173 liters

Weight:

78 lbs - 35.37 kg

Bathing well:

53 1/4 X 25 7/8 in.
(1353 X 657 mm)

Deep sump height:

16 1/4 in. - 413 mm

Deck width:

4 1/8 in. - 105 mm

Drain location:

Left

Right

Project: _____

Contractor: _____

Representative: _____

Date: _____

Tel: _____

Notes: _____

WT2- LOT 20
American Standard
Style That Works Better

**BOULEVARD
PEDESTAL SINK**
VITREOUS CHINA

BOULEVARD PEDESTAL SINK

- Vitreous china
- Classic styled rectangular pedestal lavatory
- Rear overflow
- Supplied with mounting kit
- Right Height™ for greater comfort during use
- Faucet ledge with large deck area (faucet not included)
- **Design coordinates with Studio Cadet®3 Toilet**
- Basin has flat bottom to also allow use as an **above counter** sink or a **countertop** sink (with u-shaped cut out)

- ☐ **0641.800** Faucet holes on 203mm (8") centers (Illustrated)
- ☒ **0641.400** Faucet holes on 102mm (4") centers
- ☐ **0641.100** Center hole only

Nominal Dimensions:

610 x 483 x 902mm
(24" x 19" x 35-1/2")

- ☐ **0641.008** Lavatory slab-203mm (8") centers
- ☐ **0641.004** Lavatory slab-102mm (4") centers
- ☐ **0641.001** Lavatory slab-center hole only
- ☐ **0010.000** Pedestal only

Bowl sizes:

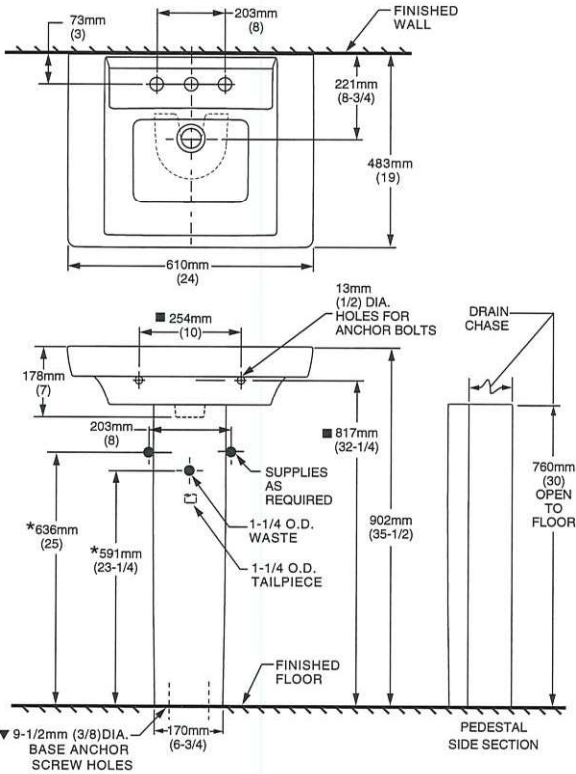
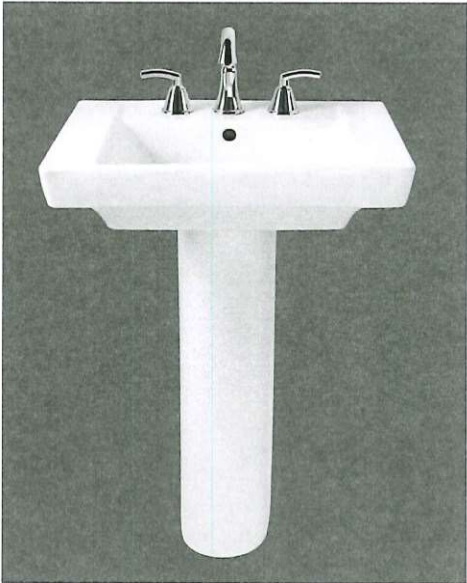
432mm (17") wide,
318mm (12-1/2") front to back,
127mm (5") deep

- Compliance Certifications -
Meets or Exceeds the Following Specifications:**
- ASME A112.19.2 - 2008/CSA B45.1-08

To Be Specified:

- ☐ Color: ☐ White ☐ Bone ☐ Linen ☐ Black
- ☐ Faucet Finish:
- ☐ Supplies:
- ☐ 1-1/4" Trap:
- ☐ Nipple:

* See faucet section for additional models available



NOTES:
* DIMENSIONS SHOWN FOR LOCATION OF SUPPLIES AND "P" TRAPS ARE SUGGESTED.
▼ PEDESTAL ANCHORING SCREWS NOT INCLUDED.
■ SUITABLE FOR REINFORCEMENT ONLY. ACTUAL DIMENSIONS MUST BE TAKEN FROM FIXTURE.
FITTING NOT INCLUDED AND MUST BE ORDERED SEPARATELY.
PROVIDE SUITABLE REINFORCEMENT FOR ALL WALL SUPPORTS.
INSTALLATION INSTRUCTIONS SUPPLIED WITH LAVATORY.

IMPORTANT: Dimensions of fixtures are nominal and may vary within the range of tolerance established by ANSI Standard A112.19.2. These measurements are subject to change or cancellation. No responsibility is assumed for use of superseded or voided pages.

WTZ-LOT 20

MAAX SUBMITTAL SPECIFICATIONS

HALO SLIDING DOOR 44 1/2

MODEL NUMBER 138996

DIMENSIONS: 47" x 78 3/4" Glass
Water Capacity: n/a



Project :
Contractor :
MAAX Representative : Tel :
Date :

www.maax.com

Vivez l'expérience
MAAX[®]
Enjoy the experience

STANDARD FEATURES

- 78 3/4" high luxury clear glass panel 8mm (5/16") tempered glass with chrome handle & hardware Ball bearing roller technology for smooth and quiet opening 48" & 60" reversible door for left or right opening Also available in a corner configuration

OPTIONS

- n/a

UNIQUE FEATURES

- Reversible Header
- Ball Bearing Roller

SYSTEMS

CERTIFICATIONS

Maax products adhere to one or more of the following certifications:



2012-05-05

DS
S. FRL
DS