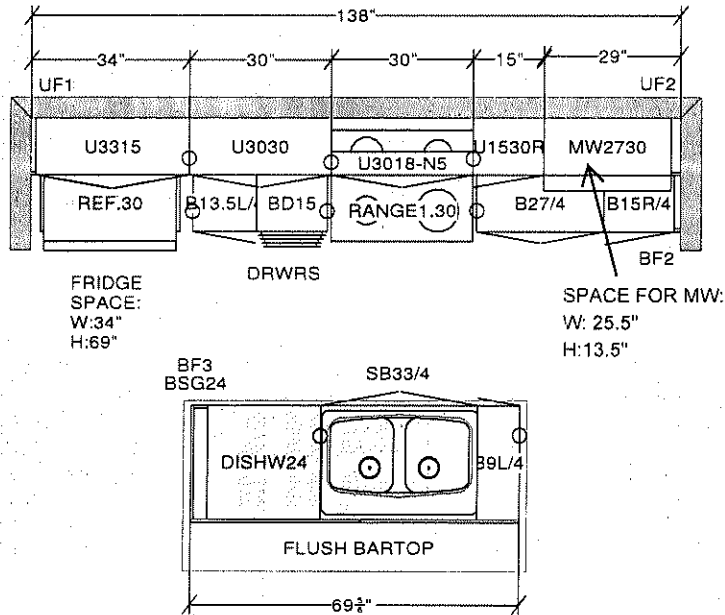


**DCR PHOENIX HOMES
TERRA FLATS**

MODEL - TYPE E (UPPER FLOOR)

KITCHEN / VANITIES

MOUNTING HEIGHT - 84



LINE 1

HARDWARE - U1

STANDARD WHITE INTERIOR

METAL DRAWER BOX

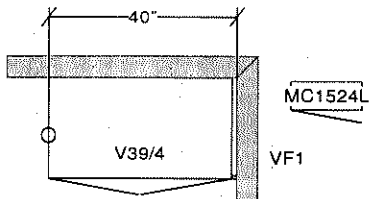
3 PCS - 5/8" KICK - FIN. BOTH ENDS

2 PCS - LOOSE FILLER - 6 x 96

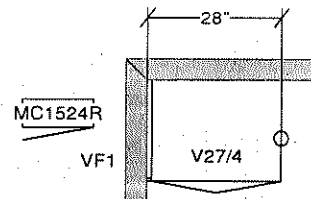
2 PCS - 90 DEG. CORNER MOULD

1 PCS - T-MOULDING

4 PCS - FLAT MOULDING



MAIN BATH



ENSUITE

All dimensions, size designations given are subject to verification on job site and adjustment to fit job conditions.



This is an original design and must not be released or copied unless applicable fee has been paid or job order placed.

Designed: 2017-04-04
Printed: 2017-04-07

TYPE E

All

Drawing #: 1 No Scale.