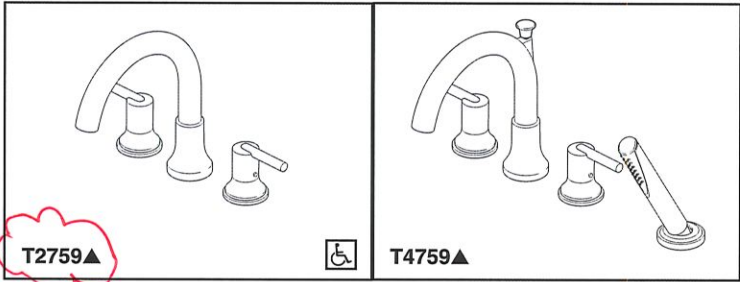
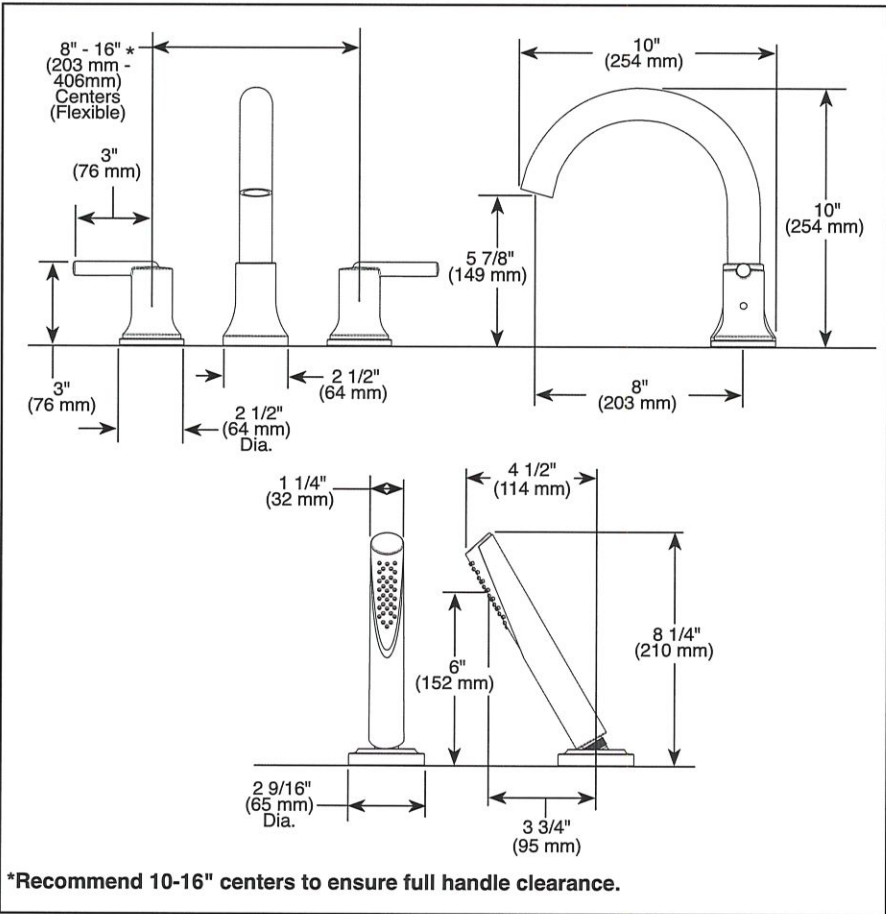


PW 172



Submitted Model No.: \_\_\_\_\_

Specific Features: \_\_\_\_\_



▲ Designate Proper Finish Suffix



see what Delta can do™

## ROMAN TUB/WHIRLPOOL FAUCET TRIM

- Trinsic® Collection
- Three Hole Installation (T2759 Series)
- Four Hole Installation (T4759 Series)

### STANDARD SPECIFICATIONS:

- Hand shower max flow rate of 1.75 gpm @ 80 psi, 6.6 L/min @ 550 kPa
- Trim only for two handle Roman Tub faucet for concealed mounting
- Temperature and volume controlled with handles
- Red/blue indicator markings
- Rough-In kit must also be ordered to complete installation
  - R4707 for four hole
  - R2700 or R2707 for three hole
  - RP23601 for three hole 10" fixed installationThere are separate specification sheets on each rough-in kit if more details are required
- Hand shower includes double check valves for backflow prevention (T4759)

### WARRANTY

- Parts and Finish - Lifetime limited warranty; or for commercial purchasers, 10 years for multi-family residential (apartments and condominiums) and 5 years for all other commercial uses, in each case from the date of purchase.
- Electronic Parts and Batteries (if applicable) - 5 years from the date of purchase; or for commercial purchasers, 1 year from the date of purchase. No warranty is provided on batteries.



### COMPLIES WITH:

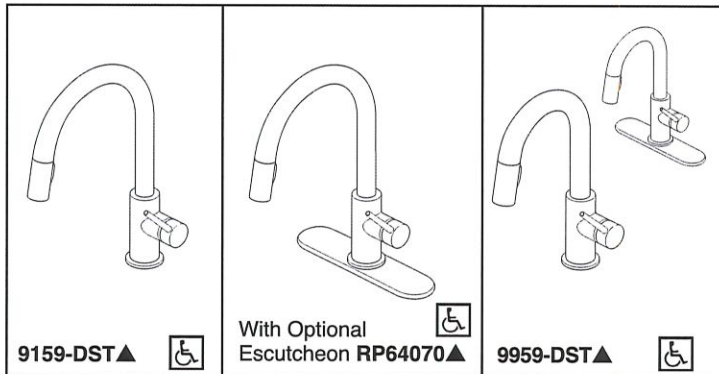
- ASME A112.18.1 / CSA B125.1
- Indicates compliance to ICC/ANSI A117.1 - Valve control only
- EPA WaterSense® - Applies to T4759▲ only

Delta reserves the right (1) to make changes in specifications and materials, and (2) to change or discontinue models, both without notice or obligation. Dimensions are for reference only. See current full-line price book or [www.deltafaucet.com](http://www.deltafaucet.com) for finish options and product availability.

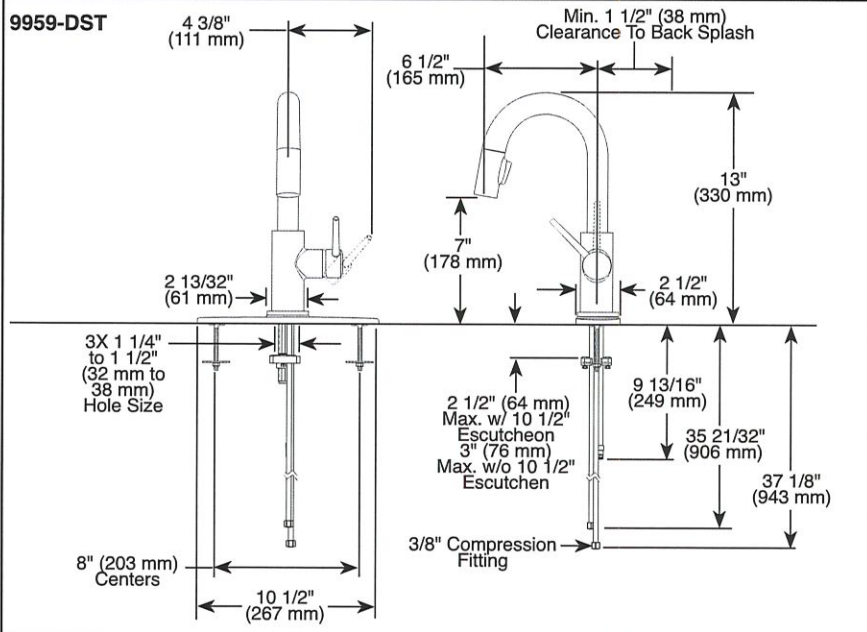
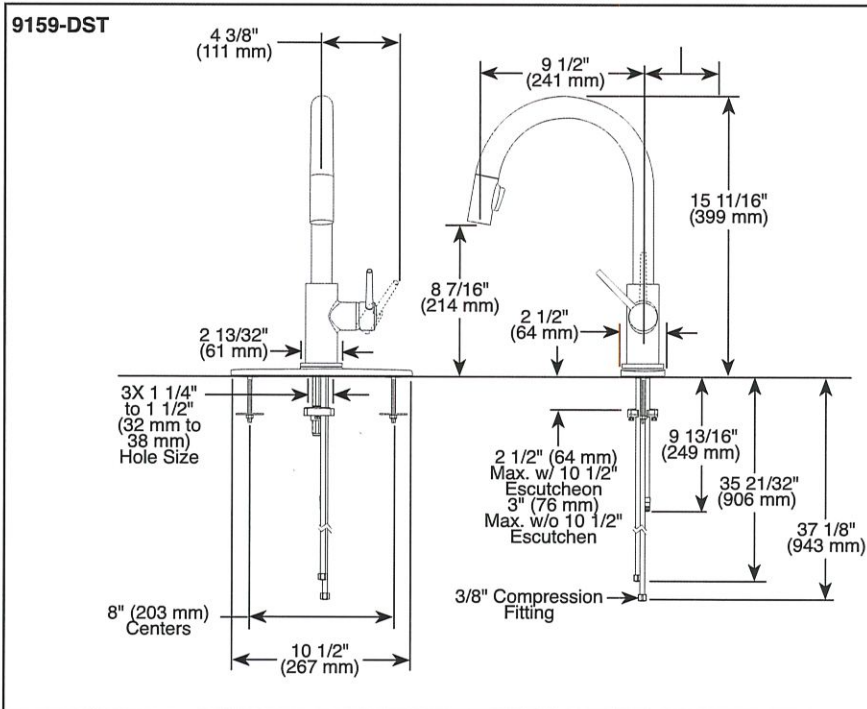
DSP-B-T2759 Rev. F

**Delta Faucet Company**  
55 E. 111th Street, Indianapolis, IN 46280  
350 South Edgeware Road, St. Thomas, ON N5P 4L1  
© 2019 Delta Faucet Company

PW 172



Submitted Model No.: \_\_\_\_\_  
Specific Features: \_\_\_\_\_



▲ Designate proper finish suffix

Delta reserves the right (1) to make changes in specifications and materials, and (2) to change or discontinue models, both without notice or obligation. Dimensions are for reference only. See current full-line price book or [www.deltafaucet.com](http://www.deltafaucet.com) for finish options and product availability.

DSP-K-9159-DST Rev. F



see what Delta can do™

## KITCHEN FAUCETS

- Trinsic® Collection
- Single Handle Deck Mount
- 2-Function Pull-Down Sprayer

### FEATURES:

- MagnaTite® Magnetic System
- DIAMOND Seal® Technology
- Touch-Clean® Sprayhead


### STANDARD SPECIFICATIONS:

- Maximum 1.8 gpm @ 60 psi, 6.8 L/min @ 414 kPa
- One or three hole mount (escutcheon optional, not included)
- Spout rotates 360°
- Control mechanism shall be full-motion valve cartridge
- Two-function wand; Aerated stream or spray
- Red/blue indicator markings
- Dual integral check valves in sprayer
- Quick connect hoses

### WARRANTY

- Parts and Finish - Lifetime limited warranty; or for commercial purchasers, 10 years for multi-family residential (apartments and condominiums) and 5 years for all other commercial uses, in each case from the date of purchase.
- Electronic Parts and Batteries (if applicable) - 5 years from the date of purchase; or for commercial purchasers, 1 year from the date of purchase. No warranty is provided on batteries.

### COMPLIES WITH:

- ASME A112.18.1 / CSA B125.1
- ASME A112.18.6
-  Indicates compliance to ICC/ANSI A117.1
- Verified compliant with .25% weighted average Pb content regulations.



**Delta Faucet Company**  
55 E. 111th Street, Indianapolis, IN 46280  
350 South Edgeware Road, St. Thomas, ON N5P 4L1  
© 2019 Delta Faucet Company

PW 172

Taymor®

ALLUSION

32500 SERIES | BATHWARE



The ultimate in minimalism, our Allusion bath collection features a seamless, sculptural presence with bold curves. Now available in two contemporary finishes: Polished Chrome and Matte Black.

Strong lines and understated curves in a clean design

- › VERSATILE DESIGN TO SUIT ANY BATHROOM
- › CONCEALED SCREW MOUNT ENSURES A SLEEK CONTEMPORARY INSTALLATION
- › INCLUDES MOUNTING HARDWARE FOR EASY SETUP
- › COORDINATES WITH THE TAYMOR CATANA OR EQUINOX DOOR LEVER WITH SQUARE ROSE

LIMITED LIFETIME WARRANTY



BUILDER PACK			
PHOTO	DESCRIPTION	MATTE BLACK	POLISHED CHROME
	18" TOWEL BAR	04-32518BLK	04-32518
	24" TOWEL BAR	04-32524BLK	04-32524
	SINGLE ROBE HOOK	04-32501BLK	04-32501
	HAND TOWEL BAR	04-32510BLK	04-32510
	PAPER HOLDER	04-32548BLK	04-32548

\* MAIN, PWD, ENSUITE \*

\* BASEMENT BATH HAS STD ACCESSORIES \*

PW 172

CORE

OMBRA

WALL

Ombra is the perfect combination of form and function with its capacitive touch controls and optional hybrid baffle filters. Ombra features a powerful 600 CFM blower with our exclusive Airflow Control Tech-

nology™ (ACT™) to meet local code requirements. Available in sleek black stainless steel and stainless steel.

**ZEPHYR**  
ZEPHYRONLINE.COM

ACT™

	INTERNAL BLOWER STANDARD	INTERNAL BLOWER with ACT™ AIRFLOW CONTROL TECHNOLOGY™*	
Min. - Max. CFM	200 - 600	200 - 390	200 - 290
Min. - Max. Sones	1 - 6	1 - 4	1 - 3

\*AIRFLOW CONTROL TECHNOLOGY™ (ACT™) is an exclusive feature built into specific Zephyr hoods which can limit the maximum blower CFM to meet local code requirements.

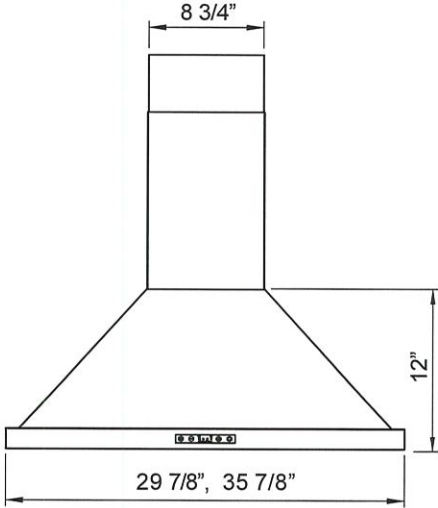


Shown in Black Stainless Steel

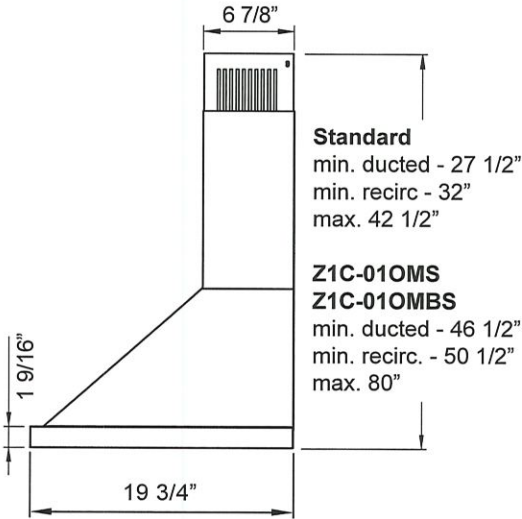


Shown in Stainless Steel

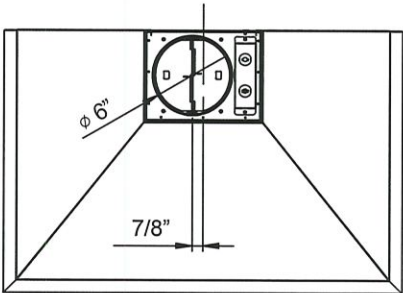
\*290 CFM\*



FRONT



SIDE



TOP



PW 172

CORE

OMBRA

WALL

ZEPHYR  
ZEPHYRONLINE.COM

MODEL		
Stainless Steel	ZOM-E30AS	ZOM-E36AS
Black Stainless Steel	<del>ZOM-E30ABS</del>	ZOM-E36ABS
Size	30"	36"
Blower CFM (Min. - Max.)	200 - 600	200 - 600
Sones (Min. - Max.)	1 - 6	1 - 6
ACT 390 CFM (Min. - Max.)	200 - 390	200 - 390
ACT 390 Sones (Min. - Max.)	1 - 4	1 - 4
ACT 290 CFM (Min. - Max.)	200 - 290	200 - 290
ACT 290 Sones (Min. - Max.)	1 - 3	1 - 3
FEATURES		
ACT™ Technology	Yes	Yes
Controls	Capacitive Touch	Capacitive Touch
Speed Levels	4*	4*
Auto Delay-Off	Yes	Yes
Lighting	Halogen, 35W x2	Halogen, 35W x2
Dual-Level Lighting	Yes	Yes
Filters	Aluminum Mesh x2	Aluminum Mesh x2
Recirculating Option	Yes	Yes
Duct Cover Extension Option	Yes, Up to 12' Ceiling	Yes, Up to 12' Ceiling
DUCT SPECIFICATIONS		
Vertical Internal Blower	6" Round	6" Round
Horizontal Internal Blower	NA	NA
AC POWER	120V, 60Hz at Max. 3.5A	120V, 60Hz at Max. 3.5A
OPTIONAL ACCESSORIES		
Recirculating Kit	ZRC-01OM	ZRC-01OM
Duct Cover Extension	Z1C-01OMS (ss) Z1C-01OMBS (black ss)	Z1C-01OMS (ss) Z1C-01OMBS (black ss)
Bloom™ GU10 LED	Z0B0040	Z0B0040
Hybrid Baffle Filter Kit	Z0F-B002	Z0F-B002
Make-Up Air Kit	MUA006A	MUA006A
MOUNTING HEIGHT RANGE**		
	26" - 34"	26" - 34"
WARRANTY		
	3 years parts, 1 year labor	3 years parts, 1 year labor

CEILING HEIGHT		8'	8.5'	9'	9.5'	10'	10.5'	11'	12'
STANDARD DUCT COVER	Ducted Mounting Height**	26" - 33.5"	26" - 34"	29.5" - 34"	NA	NA	NA	NA	NA
	Recirc Mounting Height**	26" - 28.5"	26" - 34"	29.5" - 34"	NA	NA	NA	NA	NA
DUCT COVER EXTENSION	Ducted Mounting Height**	NA	NA	26" - 30.5"	26" - 34"	26" - 34"	26" - 34"	26" - 34"	28" - 34"
	Recirc Mounting Height**	NA	NA	26" - 26"	26" - 32"	26" - 34"	26" - 34"	26" - 34"	28" - 34"

\*When ACT™ is enabled the maximum speed levels will change. ACT 390 CFM = 3 speeds and ACT 290 CFM = 2 speeds.  
\*\*Mounting height refers to distance between top of a 36" tall cooking surface and bottom of hood.

ACT™ AIRFLOW CONTROL TECHNOLOGY™ (ACT™) is an exclusive feature built into specific Zephyr hoods which can limit the maximum blower CFM to meet local code requirements.

Specifications subject to change, check zephyronline.com for up-to-date information.  
Zephyr Ventilation | 2277 Harbor Bay Parkway, Alameda, CA 94502 | 888.880.VENT

SEP18.0101

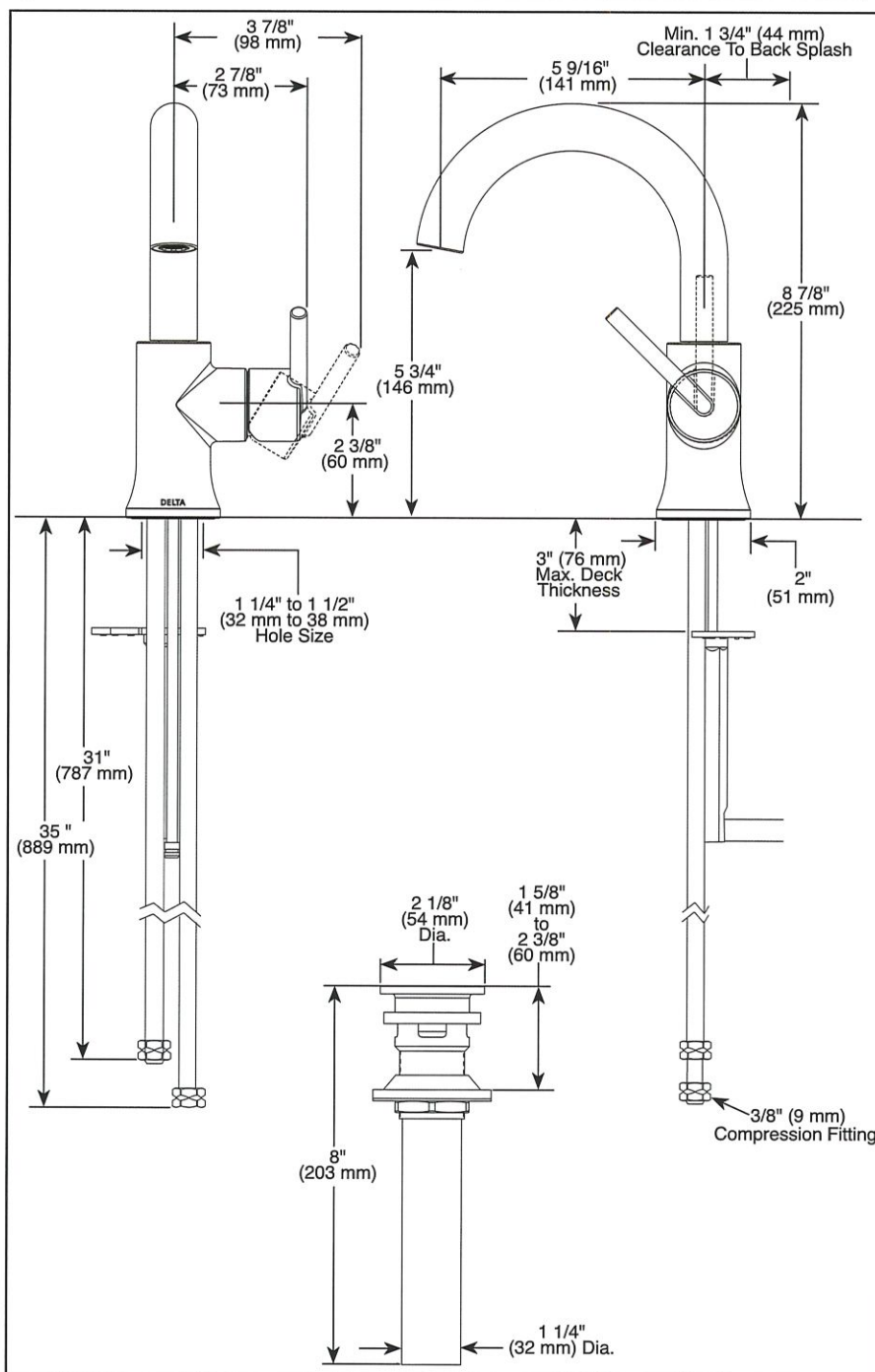


PW 172



Submitted Model No.: \_\_\_\_\_

Specific Features: \_\_\_\_\_



▲ Designate Proper Finish Suffix

Delta reserves the right (1) to make changes in specifications and materials, and (2) to change or discontinue models, both without notice or obligation. Dimensions are for reference only. See current full-line price book or [www.deltafaucet.com](http://www.deltafaucet.com) for finish options and product availability.

DSP-L-559HA-DST Rev. E



see what Delta can do™

## BATHROOM FAUCET

- Trinsic® Collection
- High Arc Swivel Spout

### FEATURES:

- Euro-Motion Diamond™ Valve

### STANDARD SPECIFICATIONS:

- Max. flow rate 1.2 gpm @ 60 psi, 4.5 L/min @ 414 kPa (559HA-DST)
- Max. flow rate 1.0 gpm @ 60 psi, 3.8 L/min @ 414 kPa (559HA-GPM-DST)
- Single hole mount
- Spout swivels 360°
- Solid metal construction
- Diamond coated ceramic cartridge
- Red/blue indicator markings
- Models include metal push-pop drain

### WARRANTY

- Parts and Finish - Lifetime limited warranty; or for commercial purchasers, 10 years for multi-family residential (apartments and condominiums) and 5 years for all other commercial uses, in each case from the date of purchase.
- Electronic Parts and Batteries (if applicable) - 5 years from the date of purchase; or for commercial purchasers, 1 year from the date of purchase. No warranty is provided on batteries.



### COMPLIES WITH:

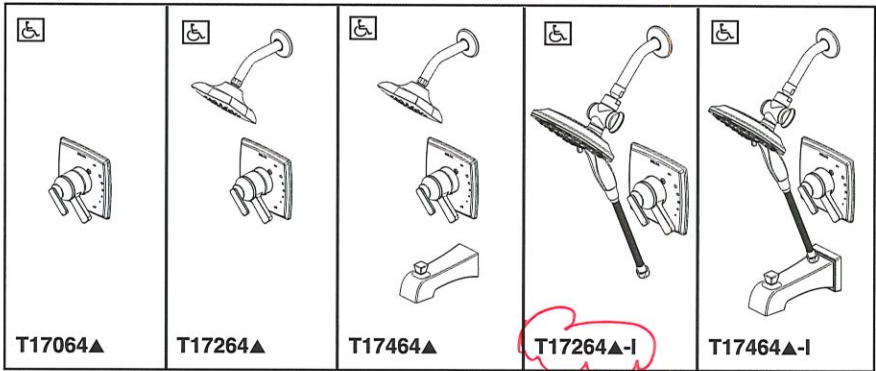
- ASME A112.18.1 / CSA B125.1
- ASME A112.18.2 / CSA B125.2
- Indicates compliance to ICC/ANSI A117.1 - Valve control only
- EPA WaterSense®
- Verified compliant with .25% weighted average Pb content regulations.



### Delta Faucet Company

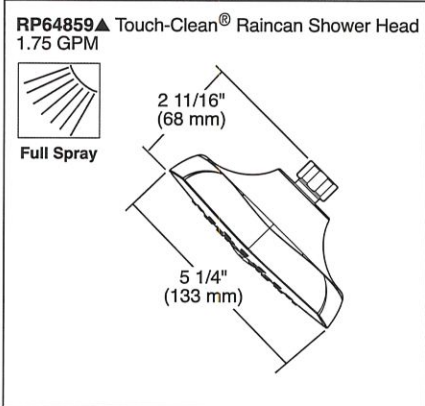
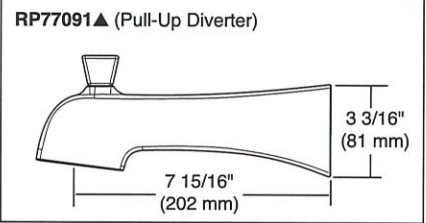
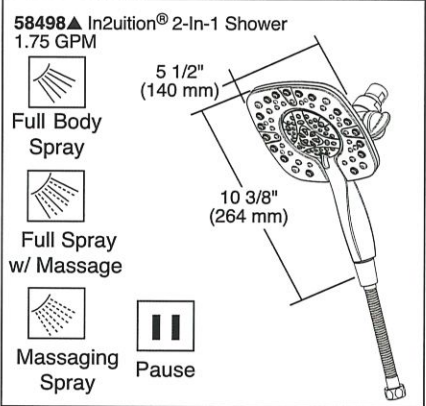
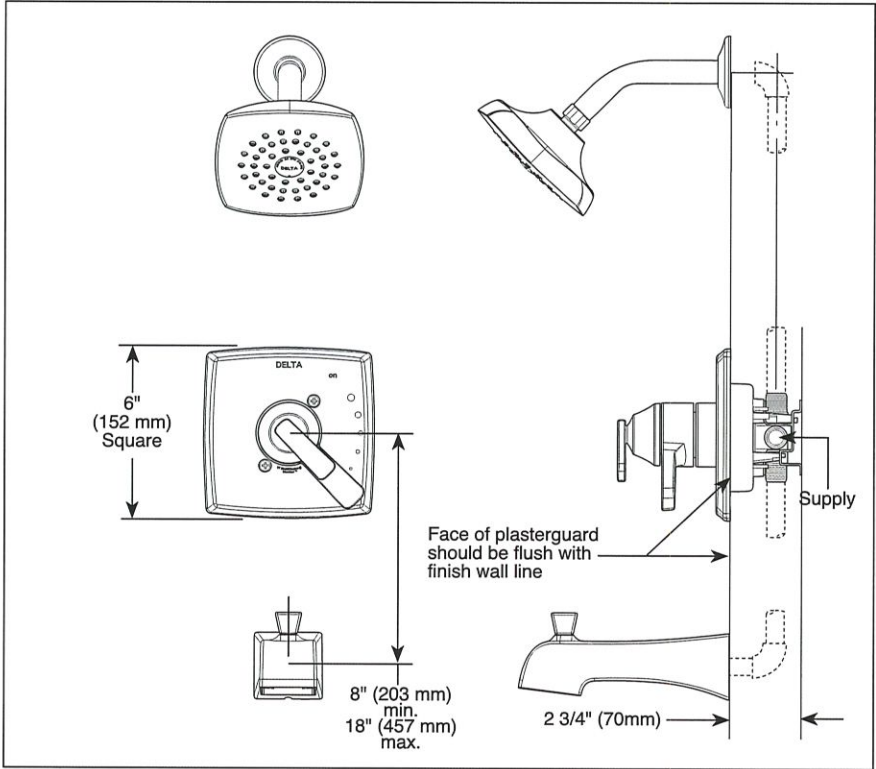
55 E. 111th Street, Indianapolis, IN 46280  
350 South Edgeware Road, St. Thomas, ON N5P 4L1  
© 2020 Delta Faucet Company

PW17Z



Submitted Model No.: \_\_\_\_\_

Specific Features: \_\_\_\_\_



▲ Designate Proper Finish Suffix  
Delta reserves the right (1) to make changes in specifications and materials, and (2) to change or discontinue models, both without notice or obligation. Dimensions are for reference only. See current full-line price book or [www.deltafaucet.com](http://www.deltafaucet.com) for finish options and product availability.  
DSP-B-T17064 Rev. H



see what Delta can do™

## TUB AND SHOWER FAUCET TRIM

- Ashlyn® Bath Collection
- Valve Only (T17064 Series)
- Shower Only (T17264 & T17264-I Series)
- Tub/Shower (T17464 & T17464-I Series)

### FEATURES:

- Monitor® 17 Series pressure balanced bath mixing valve trim
- In2ition® available select models with -I suffix

### STANDARD SPECIFICATIONS:

- Maintains a balanced pressure of hot and cold water even when a valve is turned on or off elsewhere in the system
- For use with MultiChoice® Universal rough valve body (R10000 Series)
- Back-to-back installation capability
- Solid brass forged body
- Lever volume control handle; temperature adjustment dial
- Field adjustable to limit handle rotation into hot water zone
- Maximum dial rotation adjustable between 90° and 180°
- All parts replaceable from the front of the valve
- Max flow rate 1.75 gpm @ 80 psi, 6.6 L/min @ 550 kPa
- Tub port maximum flow rate 6.2 gpm @ 60 psi with R10000-UNBX
- Shower arm overall horizontal length = 5 1/2" (138 mm), including threaded ends
- Red/blue pad print temperature indicators on handle
- Stem extension kit RP77992 can be ordered to allow for an additional 1 3/4" wall thickness. RP77992 ships with chrome escutcheon screws. For special finishes also order RP12630 escutcheon screws in desired finish.

### WARRANTY

- Parts and Finish - Lifetime limited warranty; or for commercial purchasers, 10 years for multi-family residential (apartments and condominiums) and 5 years for all other commercial uses, in each case from the date of purchase.
- Electronic Parts and Batteries (if applicable) - 5 years from the date of purchase; or for commercial purchasers, 1 year from the date of purchase. No warranty is provided on batteries.

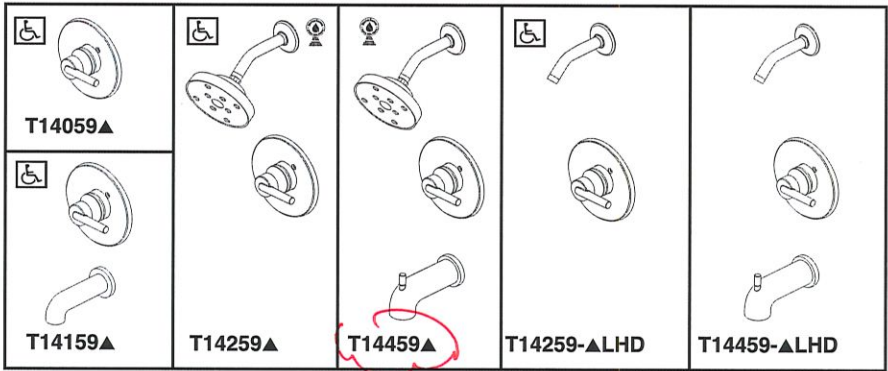


### COMPLIES WITH:

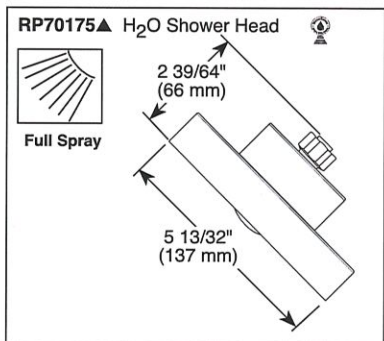
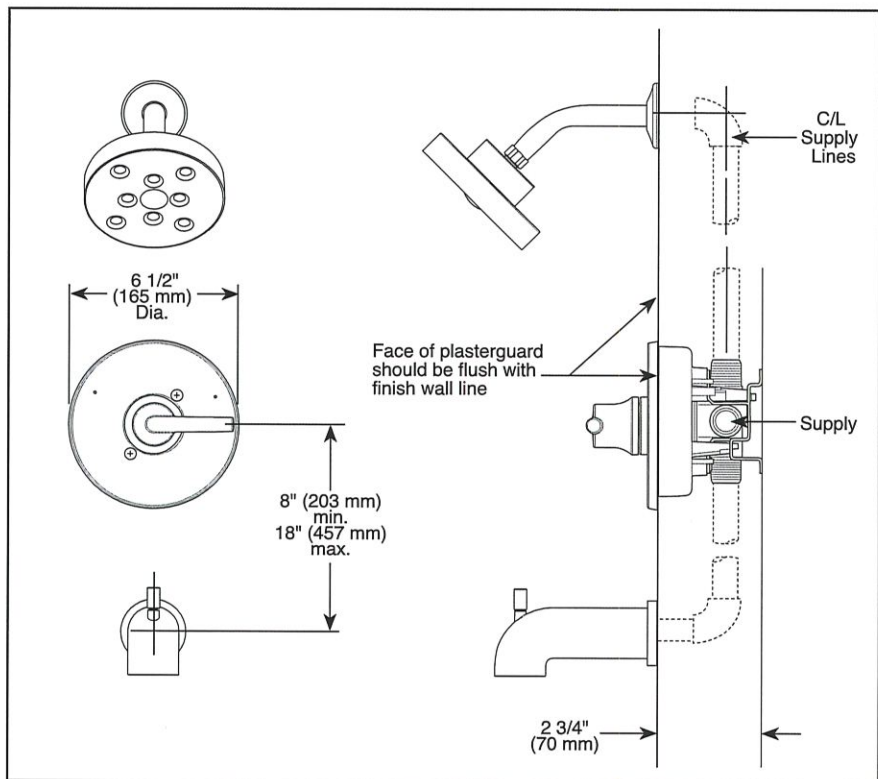
- ASME A112.18.1 / CSA B125.1
- ASSE 1016
- Indicates compliance to ICC/ANSI A117.1 - Valve control only
- EPA WaterSense® - Applies to T17264, T17464, T17264-I, T17464-I, 58498 and RP64859 only

**Delta Faucet Company**  
55 E. 111th Street, Indianapolis, IN 46280  
350 South Edgeware Road, St. Thomas, ON N5P 4L1  
© 2020 Delta Faucet Company

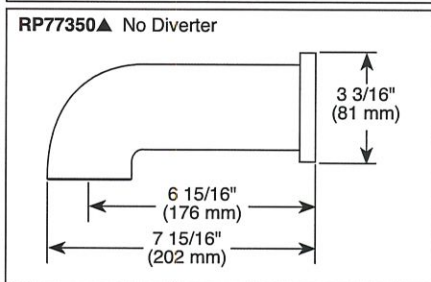
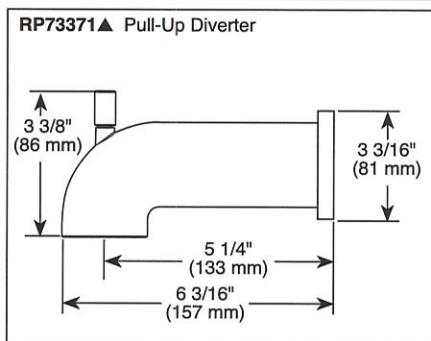
PW 172



Submitted Model No.: \_\_\_\_\_  
Specific Features: \_\_\_\_\_



▲ Designate Proper Finish Suffix



Delta reserves the right (1) to make changes in specifications and materials, and (2) to change or discontinue models, both without notice or obligation. Dimensions are for reference only. See current full-line price book or [www.deltafaucet.com](http://www.deltafaucet.com) for finish options and product availability.

DSP-B-T14059 Rev. L



see what Delta can do™

## TUB AND SHOWER FAUCET TRIM

- Trinsic® Bath Collection
- Valve Only (T14059)
- Tub Only (T14159)
- Shower Only (T14259)
- Tub/Shower (T14459)

### FEATURES:

- Monitor® 14 Series pressure balanced single handle bath mixing valve trim
- Single function H<sub>2</sub>Okinetic® Technology shower head

### STANDARD SPECIFICATIONS:

- Maintains a balanced pressure of hot and cold water even when a valve is turned on or off elsewhere in the system
- For use with MultiChoice® Universal rough valve body (R10000 Series)
- Temperature only controlled with handle
- Field adjustable means to limit handle rotation into hot water zone
- 120° maximum handle rotation
- Maximum 1.75 gpm @ 80 psi, 6.6 L/min @ 550 kPa
- Tub port maximum flow rate 6.0 gpm @ 60 psi with R10000-UNBX
- Shower arm overall horizontal length = 5 1/2" (138 mm), including threaded ends
- Red/blue pad print temperature indicators on escutcheon
- "LHD" models indicate less showerhead
- 1/2" CWT slip-on spout adapter
- Stem extension kit RP77991 can be ordered to allow for an additional 1 3/4" wall thickness. RP77991 ships with chrome escutcheon screws. For special finishes also order RP12630 escutcheon screws in desired finish.

### WARRANTY

- Parts and Finish - Lifetime limited warranty; or for commercial purchasers, 10 years for multi-family residential (apartments and condominiums) and 5 years for all other commercial uses, in each case from the date of purchase.
- Electronic Parts and Batteries (if applicable) - 5 years from the date of purchase; or for commercial purchasers, 1 year from the date of purchase. No warranty is provided on batteries.

### COMPLIES WITH:

- ASME A112.18.1 / CSA B125.1
- ASSE 1016
- Indicates compliance to ICC/ANSI A117.1 - Valve control only
- EPA WaterSense®



**Delta Faucet Company**  
55 E. 111th Street, Indianapolis, IN 46280  
350 South Edgeware Road, St. Thomas, ON N5P 4L1  
© 2018 Delta Faucet Company

PW 172

American Standard



BARRIER FREE

STUDIO™  
UNDERCOUNTER SINK  
VITREOUS CHINA

STUDIO UNDERCOUNTER SINK

- Vitreous china
- Rectangular undercounter mount sink
- Unglazed rim
- Front overflow
- Supplied with mounting kit (047194-0070A) and template (Faucet shown not included)

☐ **0614 000 Unglazed Rim**  
540 x 387mm (21-1/4" x 15-1/4")

Bowl size:  
464mm (18-1/4") wide,  
308mm (12-1/8") front to back,  
171mm (6-3/4") deep

☐ **0618 000 Unglazed Rim**  
600 x 422mm (23-5/8" x 16-5/8")

Bowl size:  
537mm (21-1/8") wide,  
356mm (14") front to back,  
152mm (6") deep

COMPLIANCE CERTIFICATIONS –

- Meets or exceeds the following Specifications:
- ASME A112.19.2M for Vitreous China Fixtures.
  - CAN/CSA B45 Series.

To Be Specified

- ☐ Colour:
- ☐ Faucet\*:
- ☐ Faucet Finish:
- ☐ Supplies & Stops:
- ☐ Trap 1-1/4" (32 mm):

\* See faucet section for additional models available



• Countertop 864mm (34") from finished floor. Sink installed 102mm (4") from front edge of countertop. Countertop thickness to be 25mm (1") maximum.  
**MEETS THE AMERICAN DISABILITIES ACT GUIDELINES AND ANSI A117.1 ACCESSIBLE AND USEABLE BUILDINGS AND FACILITIES - CHECK LOCAL CODES.**

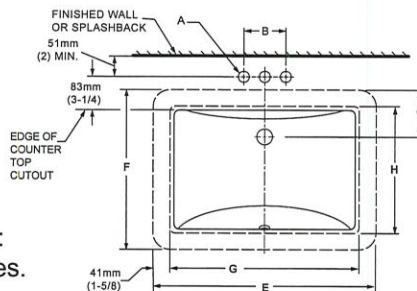
NOTES:

WE RECOMMEND USING SINK AS A TEMPLATE TO DETERMINE PROPER CONTOUR. CUT COUNTERTOP 38MM (1-1/2") INSIDE SINK CONTOUR. FAUCETS NOT INCLUDED AND MUST BE ORDERED SEPARATELY.

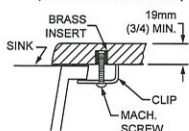
\* DIMENSIONS SHOWN FOR LOCATION OF SUPPLIES AND "P" TRAP ARE SUGGESTED.

▼ UNDERCOUNTER MOUNTING KIT SUPPLIED WITH SINK.

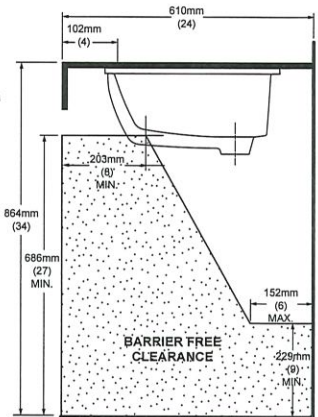
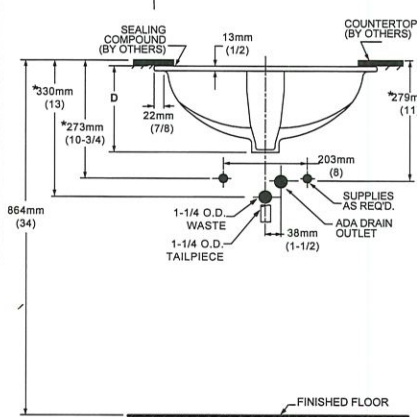
IMPORTANT: Dimensions of fixtures are nominal and may vary within the range of tolerances established by ANSI Standard A112.19.2. These measurements are subject to change or cancellation. No responsibility is assumed for use of superseded or voided pages.



▼ DETAIL OF MOUNTING CLIP  
(KIT No. 047194-0070A)



REFER TO INSTRUCTIONS PROVIDED WITH KIT FOR ADDITIONAL INFORMATION



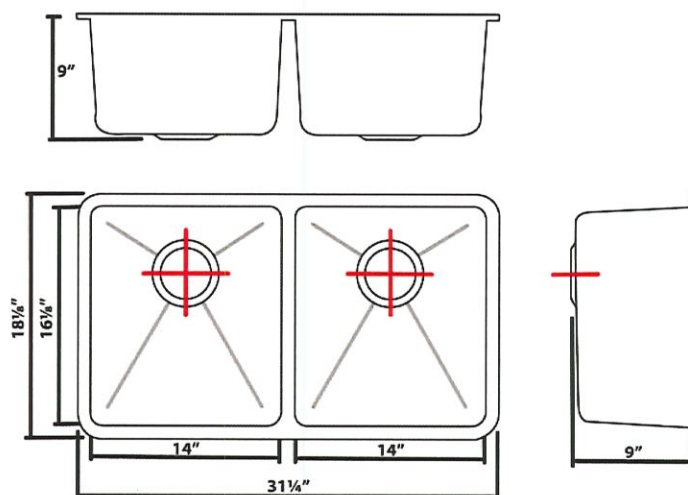
FAUCET	A	B
CENTRESET	1-1/8 (29mm)	4 (102mm)
SPREAD	1-3/8 (35mm)	8 (203mm)

CAT. NO.	E	F	G	H	C	D
0614 000	540mm (21-1/4)	387mm (15-1/4)	464mm (18-1/4)	308mm (12-1/8)	114mm (4-1/2)	209mm (8-1/4)
0618 000	600mm (23-5/8)	422mm (16-5/8)	537mm (21-1/8)	356mm (14)	108mm (4-1/4)	209mm (8-1/4)

PW 172

## Product Specification Sheet

### B1807 Undermount Double Bowl Stainless Steel Sink 18 Gauge



**Colour Finish**  
Stainless Steel

**Model No.**  
B1807

#### Description

- Undermount Double Bowl Stainless Steel Sink 18 Gauge
- Outside dimensions: 31 1/4" x 18 1/8" x 9"
- Minimum Cabinet Size: 33"
- Undermount Stainless Steel Single Bowl Sink
- 18 Gauge Type 304 Stainless Steel
- Stone Guard undercoating over rubber pad
- 3 1/2" drain opening
- Supplied with installation clip, template and strainer
- CUPC certified

#### Available accessories

- BG1807 Stainless Steel Grid
- Colander Strainer - Stainless Steel
- Drying Rack

#### MAIN LOCATION

**BRISTOL SINKS**  
56 Firestone Blvd  
London, Ontario  
N5W 6E6

#### WESTERN LOCATION

**BRISTOL SINKS**  
964 72nd Avenue NE  
Calgary, Alberta  
T2E 8V9

#### CONTACT

Tel: 1(800) 930-0214  
Fax: 1(866) 310-7580  
Email: [sales@bristolsinks.com](mailto:sales@bristolsinks.com)



PW 17Z

Taymor®

PROFESSIONAL SERIES®

STRAIT HANDLESET



Make a lasting first impression with the modern styling of our Strait handleset. Now you can add an updated silhouette to any main doorway with Strait's contemporary lines and clean aesthetic. Enjoy smooth and easy operation with our stylish Equinox lever included on the interior.

Form meets function

- › INCLUDES PREMIER SERIES EQUINOX LEVER
- › OPTIONAL INTERIOR SQUARE ROSE AVAILABLE
- › CONCEALED SCREW MOUNT ENSURES A SLEEK CONTEMPORARY INSTALLATION
- › FITS STANDARD EXTERIOR DOORS
- › COORDINATES WITH A BROAD ARRAY OF TAYMOR CURB APPEAL ACCESSORIES



STRAIT	
BUILDER PACK	
SATIN NICKEL 15	33-0766
POLISHED CHROME 26	33-0726
SATIN CHROME 26	33-0746
RETAIL PACK	
SATIN NICKEL 15	34-FV0766
POLISHED CHROME 26	34-FV0726

