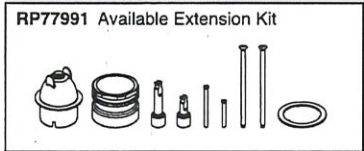
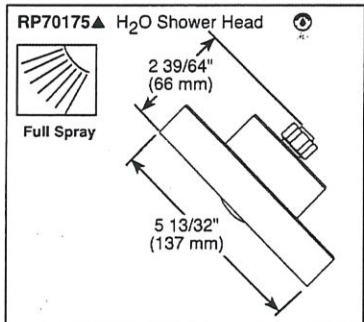
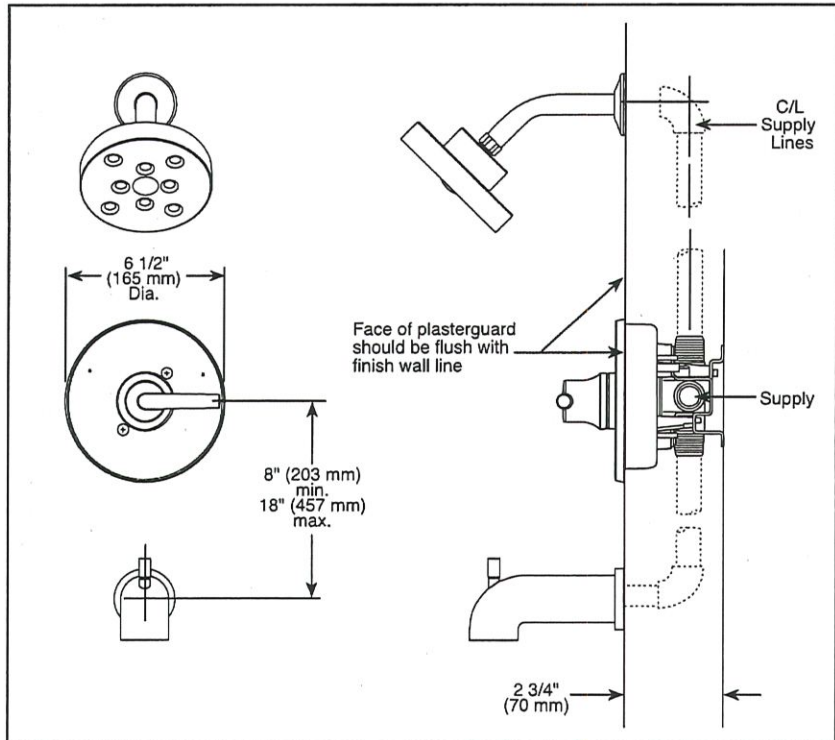
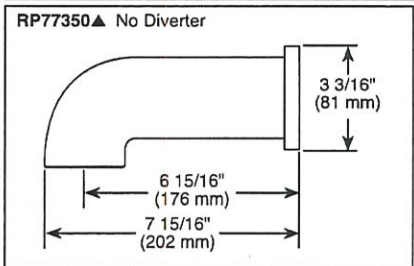
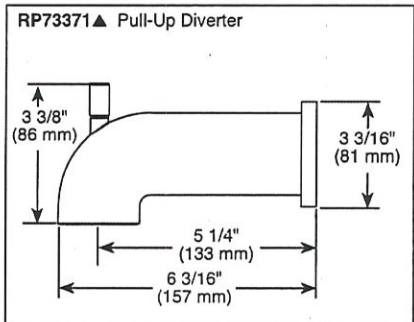


Submitted Model No.: _____
 Specific Features: _____



▲ Designate Proper Finish Suffix



Delta reserves the right (1) to make changes in specifications and materials, and (2) to change or discontinue models, both without notice or obligation. Dimensions are for reference only. See current full-line price book or www.deltafaucet.com for finish options and product availability.

DSP-B-T14059 Rev. L



see what Delta can do™

TUB AND SHOWER FAUCET TRIM

- Trinsic® Bath Collection
- Valve Only (T14059)
- Tub Only (T14159)
- Shower Only (T14259)
- Tub/Shower (T14459)

FEATURES:

- Monitor® 14 Series pressure balanced single handle bath mixing valve trim
- Single function H₂Okinetic® Technology shower head

STANDARD SPECIFICATIONS:

- Maintains a balanced pressure of hot and cold water even when a valve is turned on or off elsewhere in the system
- For use with MultiChoice® Universal rough valve body (R10000 Series)
- Temperature only controlled with handle
- Field adjustable means to limit handle rotation into hot water zone
- 120° maximum handle rotation
- Maximum 1.75 gpm @ 80 psi, 6.6 L/min @ 550 kPa
- Tub port maximum flow rate 6.0 gpm @ 60 psi with R10000-UNBX
- Shower arm overall horizontal length = 5 1/2" (138 mm), including threaded ends
- Red/blue pad print temperature indicators on escutcheon
- "LHD" models indicate less showerhead
- 1/2" CWT slip-on spout adapter
- Stem extension kit RP77991 can be ordered to allow for an additional 1 3/4" wall thickness. RP77991 ships with chrom escutcheon screws. For special finishes also order RP12630 escutcheon screws in desired finish.

WARRANTY

- Parts and Finish - Lifetime limited warranty; or for commercial purchasers, 10 years for multi-family residential (apartments and condominiums) and 5 years for all other commercial uses, in each case from the date of purchase.
- Electronic Parts and Batteries (if applicable) - 5 years from the date of purchase; or for commercial purchasers, 1 year from the date of purchase. No warranty is provided on batteries.

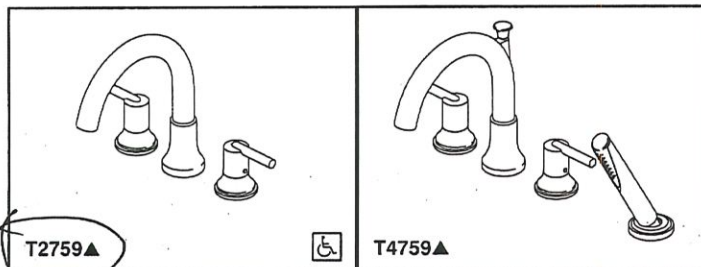
COMPLIES WITH:

- ASME A112.18.1 / CSA B125.1
- ASSE 1016
- Indicates compliance to ICC/ANSI A117.1 - Valve control only
- EPA WaterSense®

PW 38



Delta Faucet Company
 55 E. 111th Street, Indianapolis, IN 46280
 350 South Edgeware Road, St. Thomas, ON N5P 4L1
 © 2018 Delta Faucet Company

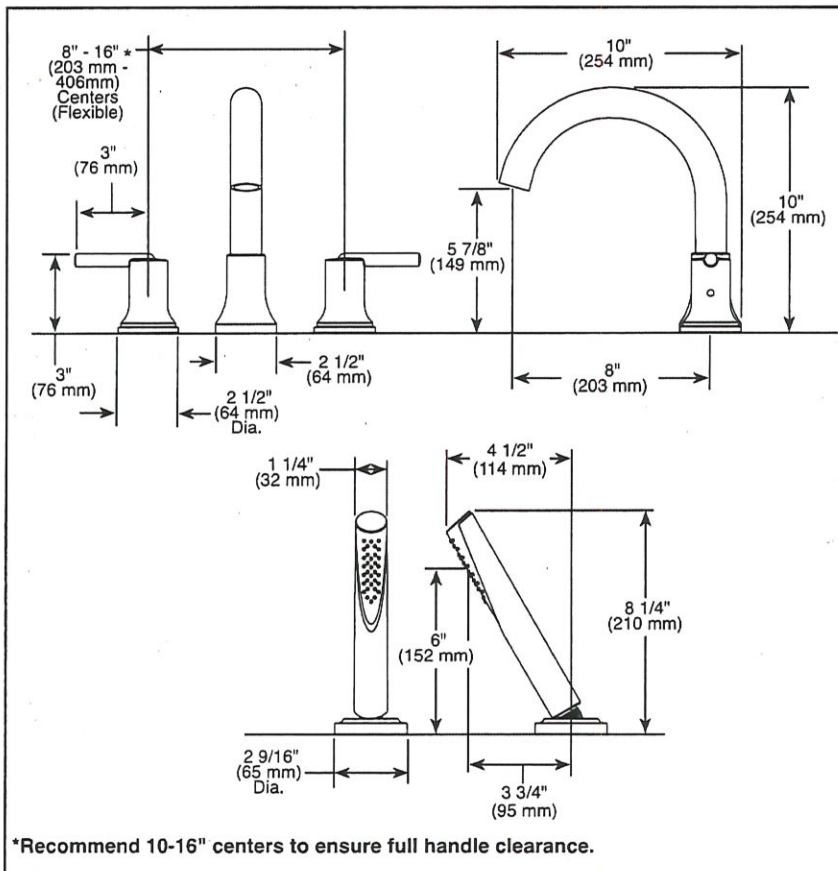


T2759▲

T4759▲

Submitted Model No.: _____

Specific Features: _____



*Recommend 10-16\" centers to ensure full handle clearance.

▲ Designate Proper Finish Suffix

PW 38



see what Delta can do™

ROMAN TUB/WHIRLPOOL FAUCET TRIM

- Trinsic® Collection
- Three Hole Installation (T2759 Series)
- Four Hole Installation (T4759 Series)

STANDARD SPECIFICATIONS:

- Hand shower max flow rate of 1.75 gpm @ 80 psi, 6.6 L/min @ 550 kPa
- Trim only for two handle Roman Tub faucet for concealed mounting
- Temperature and volume controlled with handles
- Red/blue indicator markings
- Rough-In kit must also be ordered to complete installation
 - R4707 for four hole
 - R2700 or R2707 for three hole
 - RP23601 for three hole 10\" fixed installation
 There are separate specification sheets on each rough-in kit if more details are required
- Hand shower includes double check valves for backflow prevention (T4759)

WARRANTY

- Parts and Finish - Lifetime limited warranty; or for commercial purchasers, 10 years for multi-family residential (apartments and condominiums) and 5 years for all other commercial uses, in each case from the date of purchase.
- Electronic Parts and Batteries (if applicable) - 5 years from the date of purchase; or for commercial purchasers, 1 year from the date of purchase. No warranty is provided on batteries.



COMPLIES WITH:

- ASME A112.18.1 / CSA B125.1
- Indicates compliance to ICC/ANSI A117.1 - Valve control only
- EPA WaterSense® - Applies to T4759▲ only



Delta reserves the right (1) to make changes in specifications and materials, and (2) to change or discontinue models, both without notice or obligation. Dimensions are for reference only. See current full-line price book or www.deltafaucet.com for finish options and product availability.

DSP-B-T2759 Rev. F

Delta Faucet Company

55 E. 111th Street, Indianapolis, IN 46280
350 South Edgeware Road, St. Thomas, ON N5P 4L1
© 2019 Delta Faucet Company

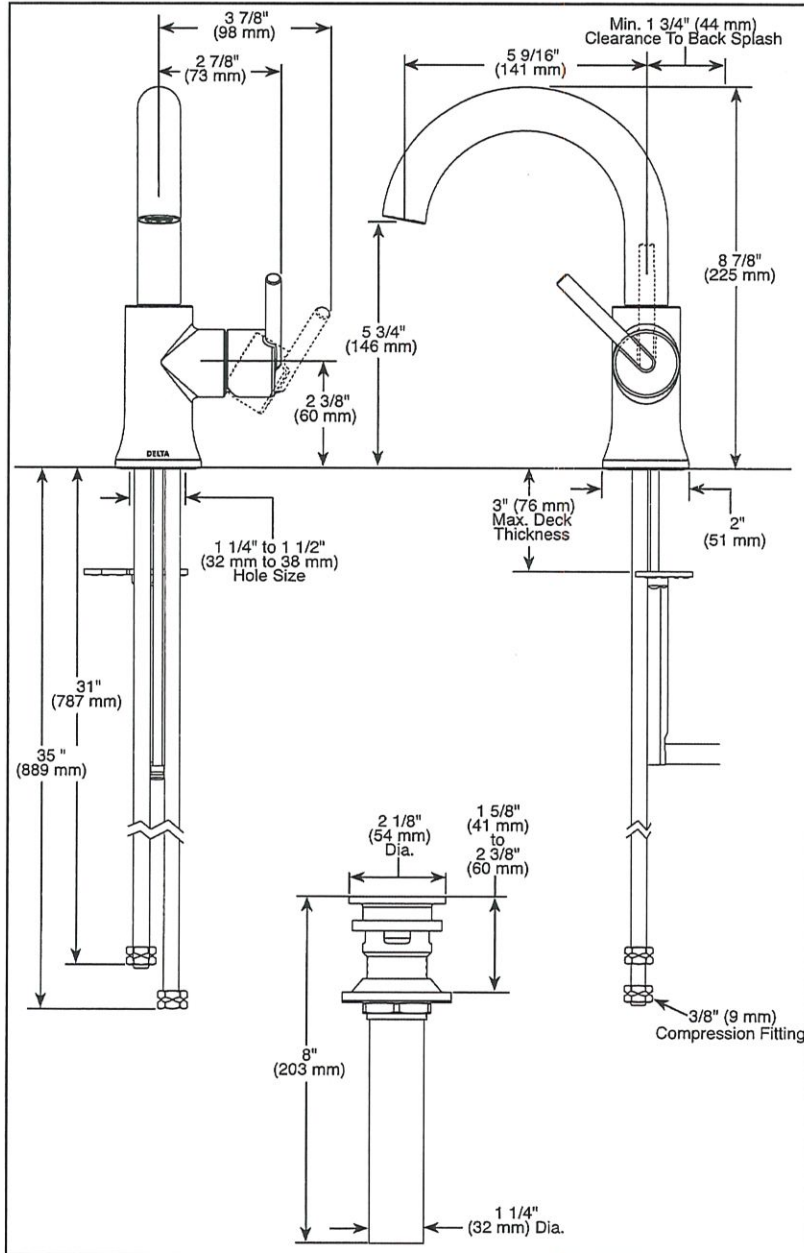


559HA-▲DST
559HA-GPM-DST



Submitted Model No.: PW-38

Specific Features: _____



▲ Designate Proper Finish Suffix

Delta reserves the right (1) to make changes in specifications and materials, and (2) to change or discontinue models, both without notice or obligation. Dimensions are for reference only. See current full-line price book or www.deltafaucet.com for finish options and product availability.

DSP-L-559HA-DST Rev. D



see what Delta can do™

BATHROOM FAUCET

- Trinsic® Collection
- High Arc Swivel Spout

FEATURES:

- Euro-Motion Diamond™ Valve

STANDARD SPECIFICATIONS:

- Max flow rate 1.2 gpm @ 60 psi, 4.5 L/min @ 414 kPa (559HA-DST)
- Max flow rate 1.0 gpm @ 60 psi, 3.8 L/min @ 414 kPa (559HA-GPM-DST)
- Single hole mount
- Spout swivels 360°
- Solid metal construction
- Diamond coated ceramic cartridge
- Red/blue indicator markings
- Models include metal push-pop drain

WARRANTY

- Parts and Finish - Lifetime limited warranty; or for commercial purchasers, 10 years for multi-family residential (apartments and condominiums) and 5 years for all other commercial uses, in each case from the date of purchase.
- Electronic Parts and Batteries (if applicable) - 5 years from the date of purchase; or for commercial purchasers, 1 year from the date of purchase. No warranty is provided on batteries.



COMPLIES WITH:

- ASME A112.18.1 / CSA B125.1
- ASME A112.18.2 / CSA B125.2
- Indicates compliance to ICC/ANSI A117.1
- EPA WaterSense®
- Verified compliant with .25% weighted average Pb content regulations.



Delta Faucet Company

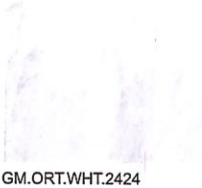
55 E. 111th Street, Indianapolis, IN 46280
350 South Edgewood Road, St. Thomas, ON N5P 4L1
© 2020 Delta Faucet Company

PN LOT 38

Stock Sizes -
Nominal

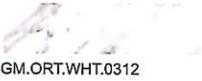
Series: Marble Colour: Oriental White Finish: Polished Additional Options

KITCHEN BACKSPLASH

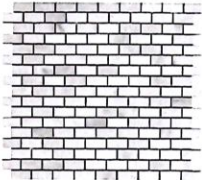


GM.ORT.WHT.2424

GM.ORT.WHT.1224



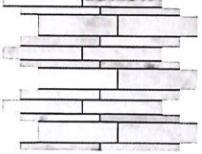
GM.ORT.WHT.0312



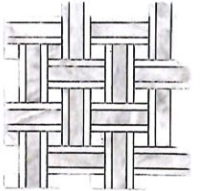
GM.ORT.WHT.0,6X1,3



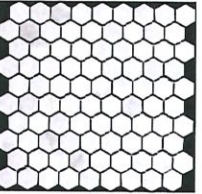
GM.ORT.WHT.1212



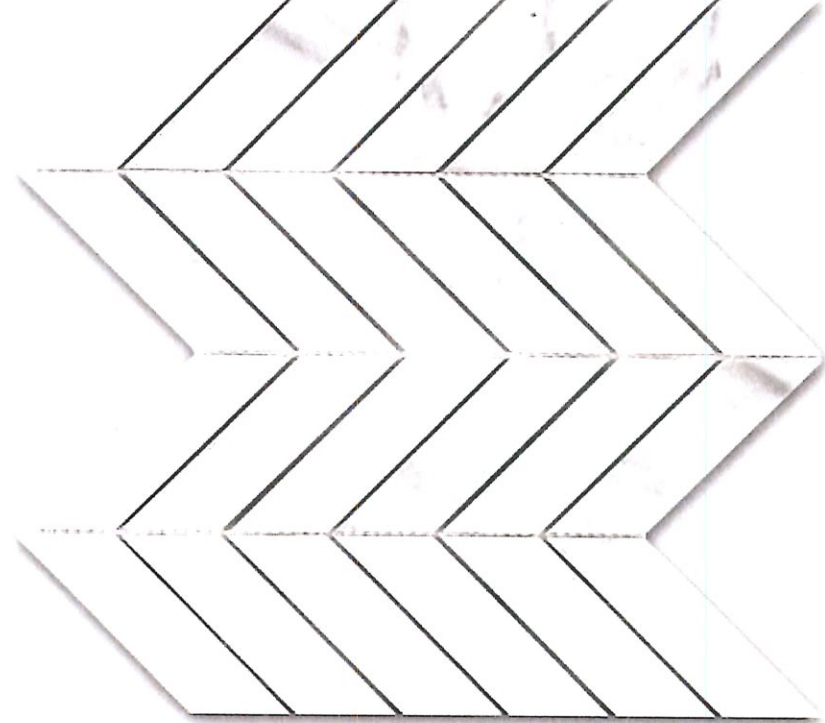
GM.ORT.WHT.LN.12IRR



GM.ORT.WHT.TRI.WEAVE



3CM (1.2") HEXAGON,
IRREGULAR SHEET
GM.ORT.WHT.HEX



COLOUR
RANGE



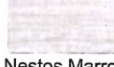
Milky Way White



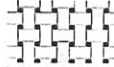
Nero Marquina



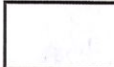
Nero



Nestos Marron



Oriental White /
Nero Marquina



Oriental White

Description

Mild Variegation of background colour from white to greyish white with dark grey and pearl white veining. SLABS ALSO STOCKED in POLISHED finish.

Usage

Floors
Walls
Residential
Commercial

Residential
walls and
floors.
Commercial
walls and light
traffic floors.

Other Information

Colour and shading differ from one tile to another, as created by nature. Some Marbles are more variegated than others, so we recommend viewing a number of full-size tiles to appreciate the range, pattern and colour variegation. Natural stones should be SEALED WITH A PENETRATING SEALER before grouting. We stock a wide range of high quality sealers.

* INSTALLED
VERTICAL *





Sink Specifications

Colour	SKU
White	402071
Anthracite	402065
Café	402066
Cinder	402067
Metallic Gray	402068
Truffle	402069
Concrete Gray	402264

Design and planning tips

- Min cabinet size: 36 in (915 mm cm)
- Bowl Depth: 9 1/2 in (240.0 mm)

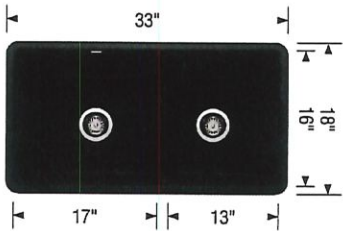
Specifications:
Mounting clips, Sink template, Installation instructions,
3½" (90 mm) stainless steel strainer(s), Limited Lifetime
Warranty

Depending on cabinet construction, a different cabinet
size may be required. Consult the cabinet manufacturer.
Codes/Standards: CSA B45.8-18/ IAPMO Z403-2018

Optional Accessories

Sink Grid	402119
Sink Grid	402120
Floating Grid	406536
CapFlow	517666

PW 38



Warranty
Limited lifetime warranty on all sinks and faucets. One-year warranty on all accessories and soap dispensers.

Code/Standards Compliance
BLANCO sinks and faucets are third-party tested and certified to CSA, cUPC, ANSI/ASME, IAPMO and NSF standards and listed by applicable certification bodies. For more information on individual product listings, contact our office or listing organization.

 Need support? Learn more by watching our sink & faucet How-to videos:
<https://www.blanco.com/ca-en/support/how-to-videos/>

	BLANCO Canada Inc 100 Corporation Drive Brampton ON L6S 6B5	Tel & Fax Tel: 905-494-2400 Toll free: 1-877-425-2626 Fax: 905-494-2425 Toll free: 1-877-825-2626
---	---	---

While BLANCO strives to provide accurate information, all images and dimensions in this document are intended for reference only and are subject to change at any time without notice. This document is not intended for use as an installation guide. For technical installation details, refer to installation instructions provided with the product. BLANCO assumes no responsibility for the use of superseded or voided specifications.

CORE

OMBRA

WALL

Ombra is the perfect combination of form and function with its capacitive touch controls and optional hybrid baffle filters. Ombra features a powerful 600 CFM blower with our exclusive Airflow Control Tech-

nology™ (ACT™) to meet local code requirements. Available in sleek black stainless steel and stainless steel.

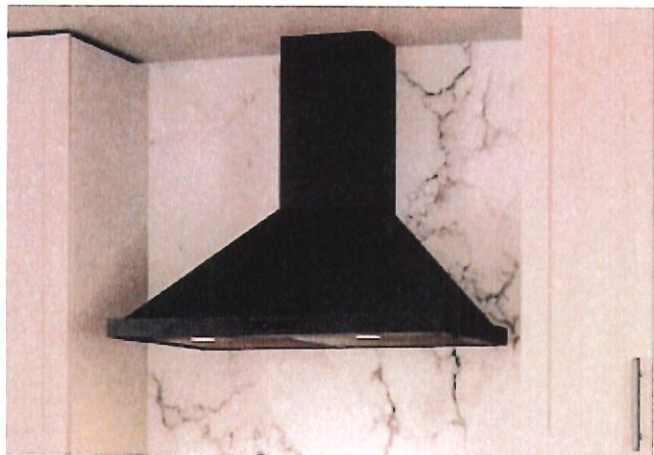
ZEPHYR
ZEPHYRONLINE.COM

ACT™

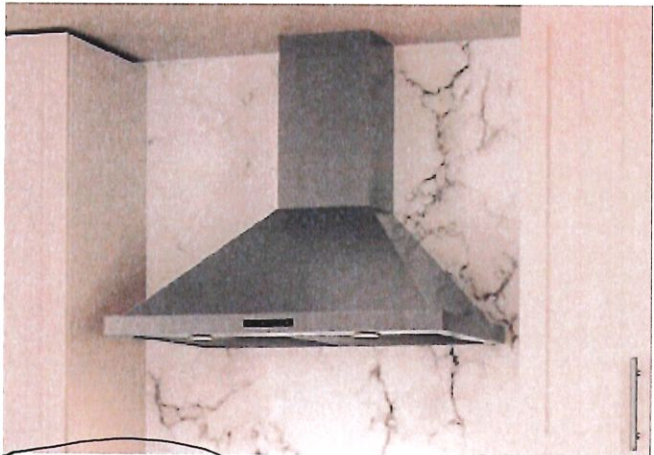
PW 38

	INTERNAL BLOWER STANDARD	INTERNAL BLOWER with ACT™ AIRFLOW CONTROL TECHNOLOGY™*	
Min. - Max. CFM	200 - 600	200 - 390	200 - 290
Min. - Max. Sones	1 - 6	1 - 4	1 - 3

*AIRFLOW CONTROL TECHNOLOGY™ (ACT™) is an exclusive feature built into specific Zephyr hoods which can limit the maximum blower CFM to meet local code requirements.

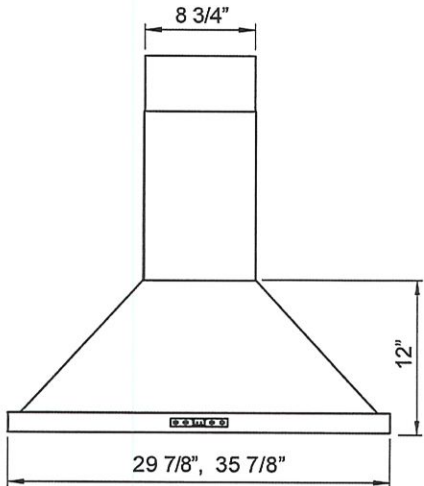


Shown in Black Stainless Steel

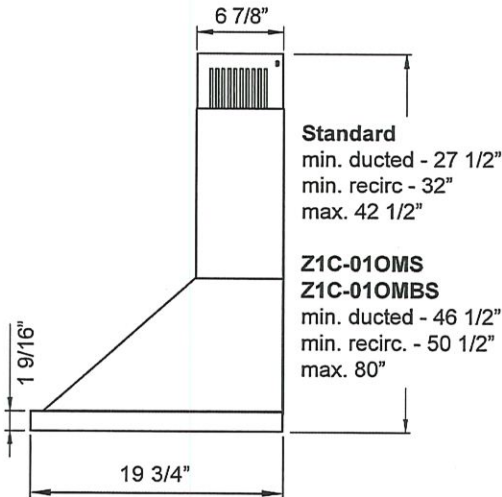


Shown in Stainless Steel

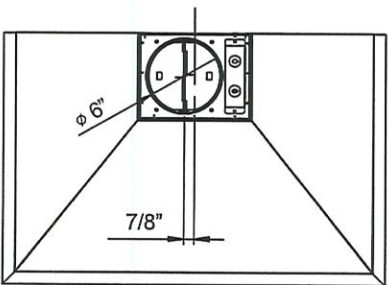
PB GA



FRONT



SIDE



TOP

PW 38

MODEL		
Stainless Steel	ZOM-E30AS	ZOM-E36AS
Black Stainless Steel	ZOM-E30ABS	ZOM-E36ABS
Size	30"	36"
Blower CFM (Min. - Max.)	200 - 600	200 - 600
Sones (Min. - Max.)	1 - 6	1 - 6
ACT 390 CFM (Min. - Max.)	200 - 390	200 - 390
ACT 390 Sones (Min. - Max.)	1 - 4	1 - 4
ACT 290 CFM (Min. - Max.)	200 - 290	200 - 290
ACT 290 Sones (Min. - Max.)	1 - 3	1 - 3
FEATURES		
ACT™ Technology	Yes	Yes
Controls	Capacitive Touch	Capacitive Touch
Speed Levels	4*	4*
Auto Delay-Off	Yes	Yes
Lighting	Halogen, 35W x2	Halogen, 35W x2
Dual-Level Lighting	Yes	Yes
Filters	Aluminum Mesh x2	Aluminum Mesh x2
Recirculating Option	Yes	Yes
Duct Cover Extension Option	Yes, Up to 12' Ceiling	Yes, Up to 12' Ceiling
DUCT SPECIFICATIONS		
Vertical Internal Blower	6" Round	6" Round
Horizontal Internal Blower	NA	NA
AC POWER	120V, 60Hz at Max. 3.5A	120V, 60Hz at Max. 3.5A
OPTIONAL ACCESSORIES		
Recirculating Kit	ZRC-01OM	ZRC-01OM
Duct Cover Extension	Z1C-01OMS (ss) Z1C-01OMBS (black ss)	Z1C-01OMS (ss) Z1C-01OMBS (black ss)
Bloom™ GU10 LED	ZOB0040	ZOB0040
Hybrid Baffle Filter Kit	ZOF-B002	ZOF-B002
Make-Up Air Kit	MUA006A	MUA006A
MOUNTING HEIGHT RANGE**	26" - 34"	26" - 34"
WARRANTY	3 years parts, 1 year labor	3 years parts, 1 year labor

CEILING HEIGHT		8'	8.5'	9'	9.5'	10'	10.5'	11'	12'
STANDARD DUCT COVER	Ducted Mounting Height**	26" - 33.5"	26" - 34"	29.5" - 34"	NA	NA	NA	NA	NA
	Recirc Mounting Height**	26" - 28.5"	26" - 34"	29.5" - 34"	NA	NA	NA	NA	NA
DUCT COVER EXTENSION	Ducted Mounting Height**	NA	NA	26" - 30.5"	26" - 34"	26" - 34"	26" - 34"	26" - 34"	28" - 34"
	Recirc Mounting Height**	NA	NA	26" - 26"	26" - 32"	26" - 34"	26" - 34"	26" - 34"	28" - 34"

*When ACT™ is enabled the maximum speed levels will change. ACT 390 CFM = 3 speeds and ACT 290 CFM = 2 speeds.
**Mounting height refers to distance between top of a 36" tall cooking surface and bottom of hood.

ACT™ AIRFLOW CONTROL TECHNOLOGY™ (ACT™)
is an exclusive feature built into specific Zephyr hoods which can limit the maximum blower CFM to meet local code requirements.

Specifications subject to change, check zephyronline.com for up-to-date information.
Zephyr Ventilation | 2277 Harbor Bay Parkway, Alameda, CA 94502 | 888.880.VENT

SEP18.0101



PW 38 MAIN BATH

American Standard

 BARRIER FREE

STUDIO®
DROP IN SINK
VITREOUS CHINA

STUDIO® DROP IN SINK

☐ 0643.008 Faucet holes on 8" (203mm) centers (illustrated)

☒ 0643.001 Center hole only

- Rectangular self-rimming drop in sink
- Made from vitreous china
- Front overflow
- Cutout template supplied
- Faucet ledge (Faucet not included)
- Shown with Moments 2506.821 Widespread Faucet (Not included)

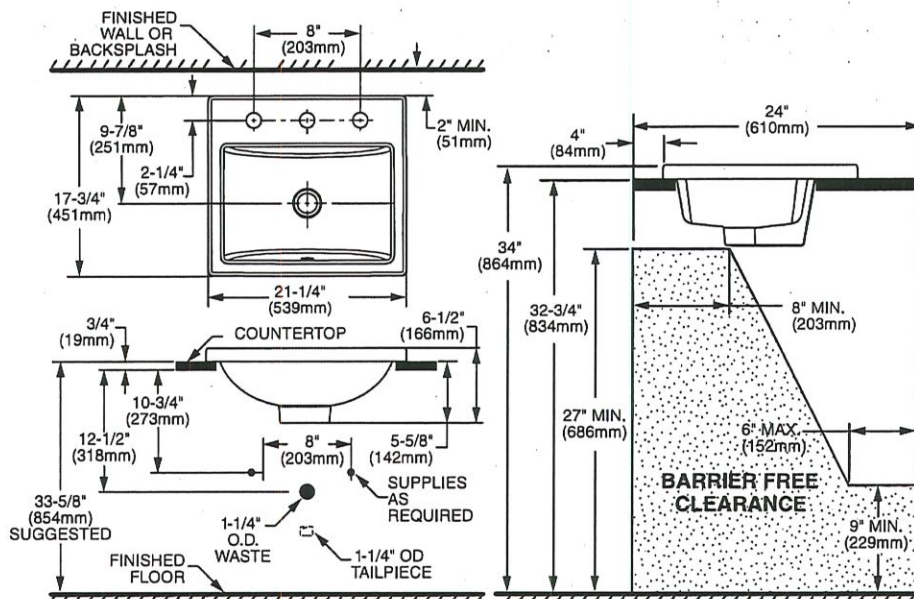


Nominal Dimensions:

21-1/4" x 17-3/4" x 6-1/2"
(539 x 451 x 166mm)

Bowl sizes:

18" (457mm) wide
12" (305mm) front to back
4-1/2" (114mm) deep



Compliance Certifications -

Meets or Exceeds the Following Specifications:

- ASME A112.19.2-2008/CSA B45.1-08 for Vitreous China Fixture

NOTES:

* DIMENSIONS SHOWN FOR LOCATION OF SUPPLIES AND "P" TRAP ARE SUGGESTED. FOR COUNTERTOP CUTOUT AND INSTALLATION INSTRUCTIONS USE TEMPLATE SUPPLIED WITH SINK. FITTINGS NOT INCLUDED WITH FIXTURE AND MUST BE ORDERED SEPARATELY. SEALING COMPOUND SUPPLIED BY OTHERS.

IMPORTANT: Dimensions of fixtures are nominal and may vary within the range of tolerances established by ANSI Standard A112.19.2. These measurements are subject to change or cancellation. No responsibility is assumed for use of superseded or voided pages.

To Be Specified:

- ☐ Color: ☐ White
- ☐ Faucet:
- ☐ Faucet Finish:
- ☐ Supplies:
- ☐ 1-1/4" Trap:

* See faucet section for additional models available



MEETS THE AMERICANS WITH DISABILITIES ACT GUIDELINES AND ICC ANSI A117.1 ACCESSIBLE AND USABLE BUILDINGS AND FACILITIES - CHECK LOCAL CODES.

Install lavatory 864mm (34") from finished floor. Lavatory installed 51mm (2") minimum from front edge of countertop provides 686mm (27") knee clearance area.

PW 38 - MASTER ENSUITE

American Standard



BARRIER FREE

STUDIO™
UNDERCOUNTER SINK
VITREOUS CHINA

STUDIO UNDERCOUNTER SINK

- Vitreous china
- Rectangular undercounter mount sink
- Unglazed rim
- Front overflow
- Supplied with mounting kit (047194-0070A) and template (Faucet shown not included)



0614 000 Unglazed Rim

540 x 387mm (21-1/4" x 15-1/4")

Bowl size:

464mm (18-1/4") wide,
308mm (12-1/8") front to back,
171mm (6-3/4") deep



0618 000 Unglazed Rim

600 x 422mm (23-5/8" x 16-5/8")

Bowl size:

537mm (21-1/8") wide,
356mm (14") front to back,
152mm (6") deep

COMPLIANCE CERTIFICATIONS –

- Meets or exceeds the following Specifications:
- ASME A112.19.2M for Vitreous China Fixtures.
 - CAN/CSA B45 Series.

To Be Specified

- ☐ Colour:
- ☐ Faucet*:
- ☐ Faucet Finish:
- ☐ Supplies & Stops:
- ☐ Trap 1-1/4" (32 mm):

* See faucet section for additional models available



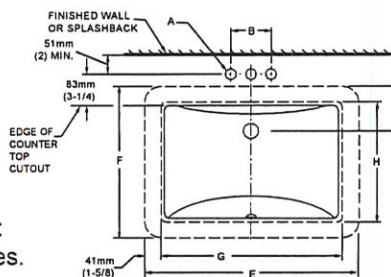
• Countertop 864mm (34") from finished floor. Sink installed 102mm (4") from front edge of countertop. Countertop thickness to be 25mm (1") maximum.
MEETS THE AMERICAN DISABILITIES ACT GUIDELINES AND ANSI A117.1 ACCESSIBLE AND USEABLE BUILDINGS AND FACILITIES - CHECK LOCAL CODES.

NOTES:

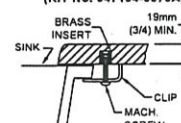
WE RECOMMEND USING SINK AS A TEMPLATE TO DETERMINE PROPER CONTOUR. CUT COUNTERTOP 38MM (1-1/2") INSIDE SINK CONTOUR. FAUCETS NOT INCLUDED AND MUST BE ORDERED SEPARATELY.
★ DIMENSIONS SHOWN FOR LOCATION OF SUPPLIES AND "P" TRAP ARE SUGGESTED.

▼ UNDERCOUNTER MOUNTING KIT SUPPLIED WITH SINK.

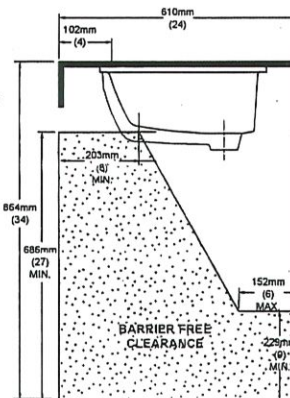
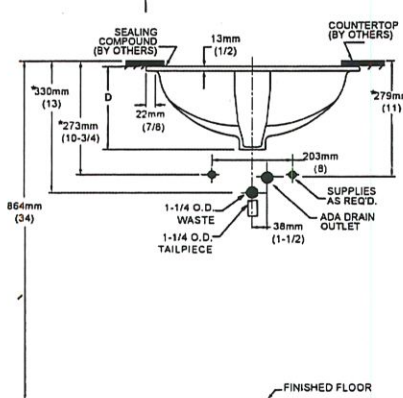
IMPORTANT: Dimensions of fixtures are nominal and may vary within the range of tolerances established by ANSI Standard A112.19.2. These measurements are subject to change or cancellation. No responsibility is assumed for use of superseded or voided pages.



▼ DETAIL OF MOUNTING CLIP (KIT No. 047194-0070A)



REFER TO INSTRUCTIONS PROVIDED WITH KIT FOR ADDITIONAL INFORMATION



FAUCET	A	B
CENTRESET	1-1/8 (29mm)	4 (102mm)
SPREAD	1-3/8 (35mm)	8 (203mm)

CAT. NO.	E	F	G	H	C	D
0614 000	540mm (21-1/4")	387mm (15-1/4")	464mm (18-1/4")	308mm (12-1/8")	114mm (4-1/2")	209mm (8-1/4")
0618 000	600mm (23-5/8")	422mm (16-5/8")	537mm (21-1/8")	356mm (14")	108mm (4-1/4")	209mm (8-1/4")

BAS-132

© 2002 American Standard Inc.

11/02



PW 38

MAAX SUBMITTAL SPECIFICATIONS

JAZZ F

MODEL NUMBER 105359

DIMENSIONS: 66" x 36" x 24" Acrylic

Water Capacity: Maximum 76 G Minimum 58 G



Project :

Contractor :

MAAX Representative :

Date :

Tel :

www.maax.com



Vivez l'expérience

MAAX®

Enjoy the experience

STANDARD FEATURES

- Unique feature: air massage system available
- Deep soak bathing for ultimate relaxation
- Relaxing backrest
- Deck for faucet
- 4 self-leveling legs for ease of installation
- Center drain
- Freestanding installation


OPTIONS

- Fjord bathtub faucet with hand shower
- Water pipe inlets (Fjord)
- Fjord 8-in. widespread lavatory
- White foam cushion
- Two chromatherapy lights
- Flexible main hose 15 ft for electronic control

UNIQUE FEATURES

- 1 Tub - 2 Pieces

SYSTEMS

 Aerofeel

DOOR SELECTION

Combine with MAAX's complete shower door offering visit www.maax.com

CERTIFICATIONS

Maax products adhere to one or more of the following certifications:



2012-05-05

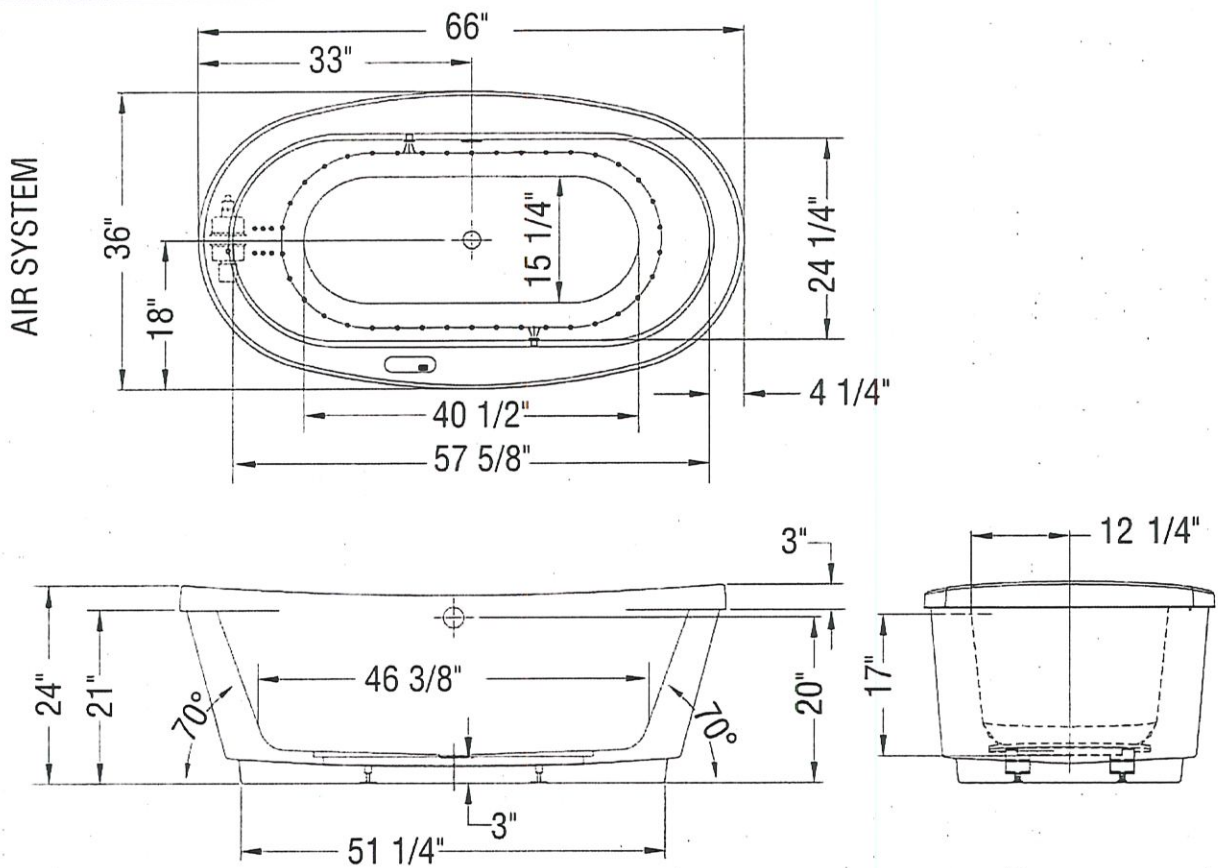
PW 38

MAAX SUBMITTAL SPECIFICATIONS

JAZZ F

MODEL NUMBER 105359

TECHNICAL DRAWINGS



(•): Indicates airjets positioning

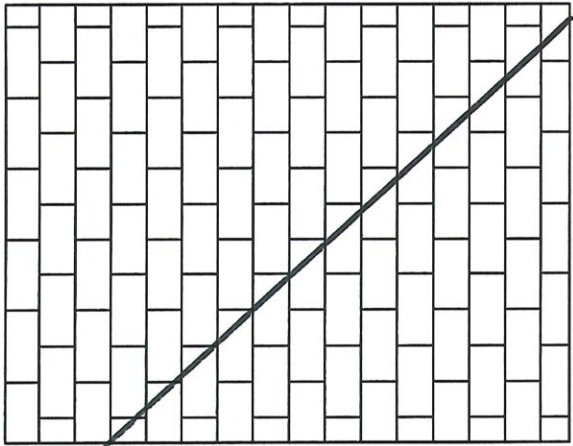
(✎): Indicates chromatherapy light positioning

All dimensions are approximate. Structure measurements must be verified against the unit to ensure proper fit.

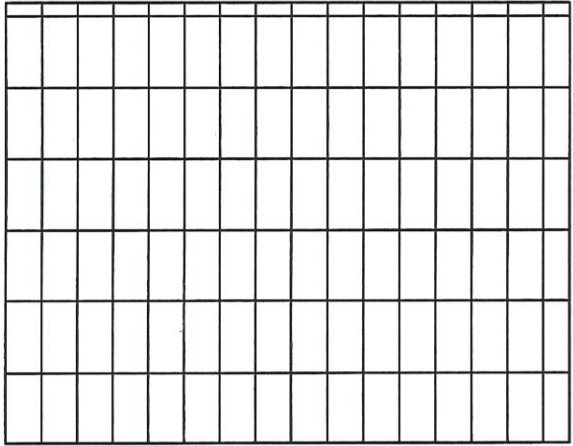
All dimensions are approximate. Structure measurements must be verified against the unit to ensure proper fit.

Vivez l'expérience
MAAX[®]
Enjoy the experience

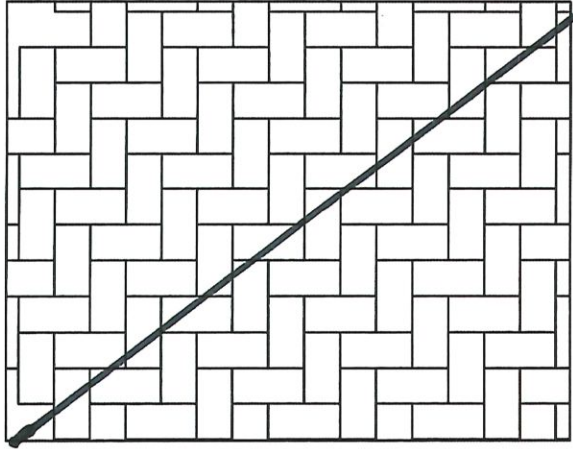
2012-05-05



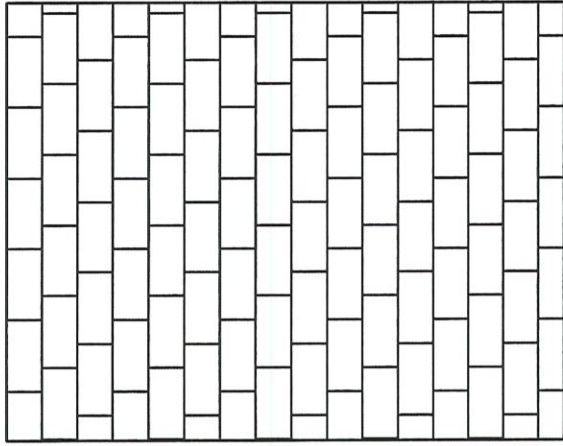
☐ BRICK PATTERN



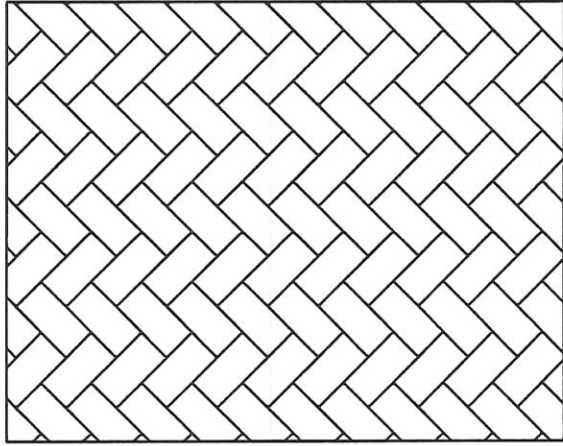
☒ STACKED PATTERN
MASTER ENSUITE FLOOR



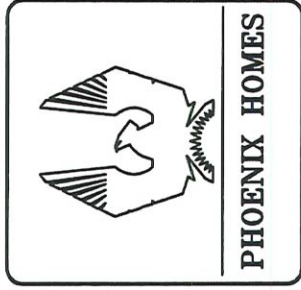
☐ HERRINGBONE PATTERN 90



☒ STAGGERED PATTERN
FOYER / PWD



☒ HERRINGBONE PATTERN 45
MAIN & ENSUITE BATH WALLS



TILE PATTERN SELECTION FOR LOT PW 38

NOTES:
