

PNT BUK B LOT 124

DCR PHOENIX HOMES

TOWNHOUSE 124 - COLBY

KITCHEN / VANITIES

MOUNTING HEIGHT: 96

42" UPPERS

LINE 2 - KITCHEN

HARDWARE - STD & 1st UPGRADE

STANDARD WHITE INTERIOR

METAL DRAWER BOX

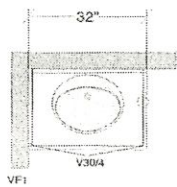
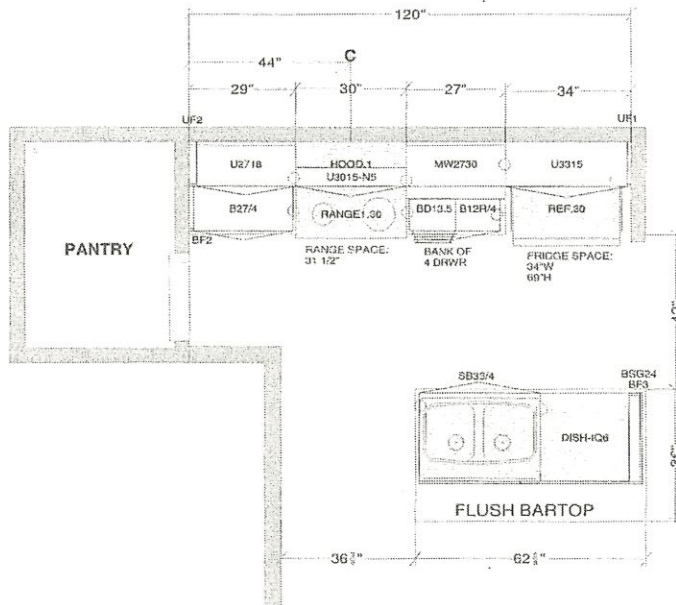
6 PCS - 5/8" KICK - FIN. BOTH ENDS

3 PCS - LOOSE FILLER - 3 x 96

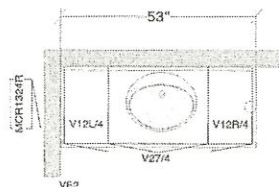
2 PCS - 90 DEG. CORNER MOULD

1 PCS - T-MOULD

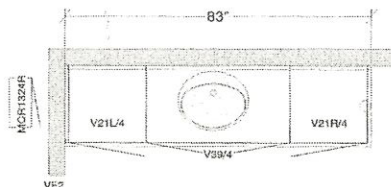
6 PCS - FLAT MOULDING



POWDER



MAIN



ENSUITE

All dimensions, size designations given are subject to verification on job site and adjustment to fit job conditions.

SPECTRUM KITCHEN and BATH DESIGN

TH 20 - 14 - Colby -KIT -VAN.kit

This is an original design and must not be released or copied unless applicable fee has been paid or job order placed.

DRAWN BY: LORI DISAVERIO, B.I.D

Designed: 2018-02-28
Printed: 2018-03-01

All

Drawing #: 1 No Scale.

95 San