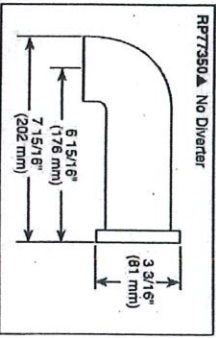
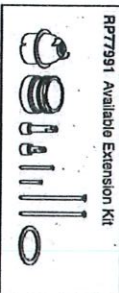
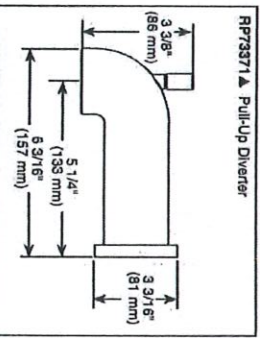
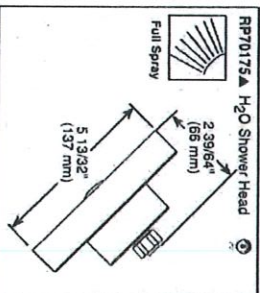
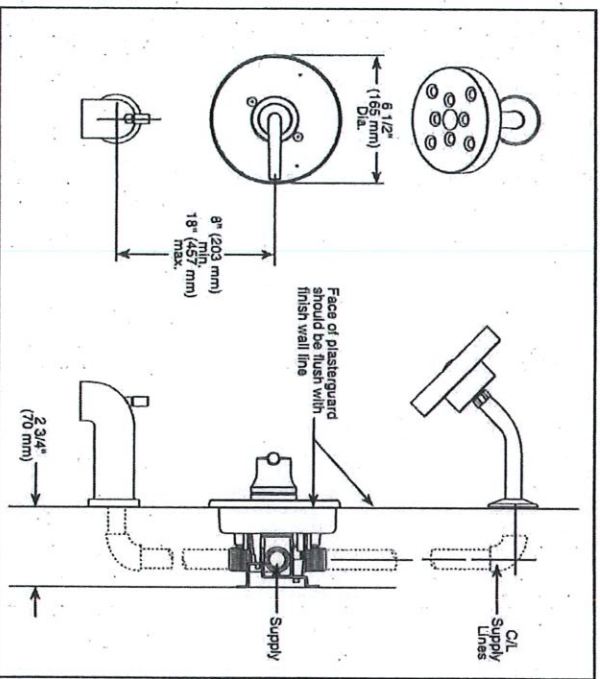


DV 50 - EN804E

T14059A	T14059A	T14059A	T14059A	T14059A
T14159A	T14159A	T14159A	T14159A	T14159A
T14259A	T14259A	T14259A	T14259A	T14259A
T14459A	T14459A	T14459A	T14459A	T14459A
T14259-ALHD	T14259-ALHD	T14259-ALHD	T14259-ALHD	T14259-ALHD
T14459-ALHD	T14459-ALHD	T14459-ALHD	T14459-ALHD	T14459-ALHD

Submitted Model No.: A181AL TO TESTED @ 18" AFF

Specific Features: A181AL TO TESTED @ 18" AFF



Delta reserves the right (1) to make changes in specifications and materials, and (2) to change or discontinue products without notice. Dimensions are for reference only. See current full-line price book or www.deltafaucet.com for finish options and product availability.

DSP-B-T14059 Rev. L



see what Delta can do-

TUB AND SHOWER FAUCET TRIM

- Trinsic® Bath Collection
- Valve Only (T14059)
- Tub Only (T14159)
- Shower Only (T14259)
- Tub/Shower (T14459)

FEATURES:

- Monitor® 14 Series pressure balanced single handle bath mixing valve trim
- Single function H₂Okinetec® Technology shower head

STANDARD SPECIFICATIONS:

- Maintains a balanced pressure of hot and cold water even when a valve is turned on or off elsewhere in the system
- For use with MultiChoice® Universal rough valve body (R10000 Series)
- Temperature only controlled with handle
- Field adjustable means to limit handle rotation into hot water zone
- 120° maximum handle rotation
- Maximum 1.75 gpm @ 80 psi, 6.6 L/min @ 550 kPa
- Tub port maximum flow rate 6.0 gpm @ 60 psi with R10000-UNBX
- Shower arm overall horizontal length = 5 1/2" (138 mm), including threaded ends
- Red/blue pad print temperature indicators on escutcheon
- "LHD" models indicate less showerhead
- 1/2" CWI slip-on spout adapter
- Stem extension kit RP77991 can be ordered to allow for an additional 1 3/4" wall thickness. RP77991 ships with chrome escutcheon screws. For special finishes also order RP12630 escutcheon screws in desired finish.

WARRANTY

- Parts and Finish - Lifetime limited warranty, or for commercial purchasers, 10 years for multi-family residential (apartments and condominiums) and 5 years for all other commercial uses, in each case from the date of purchase.
- Electronic Parts and Batteries (if applicable) - 5 years from the date of purchase, or for commercial purchasers, 1 year from the date of purchase. No warranty is provided on batteries.

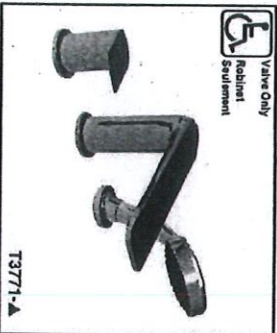
COMPLIES WITH:

- ASME A112.18.1 / CSA B125.1
- ASSE 1016
- ICC/ANSI A17.1 - Valve control only
- EPA WaterSense®

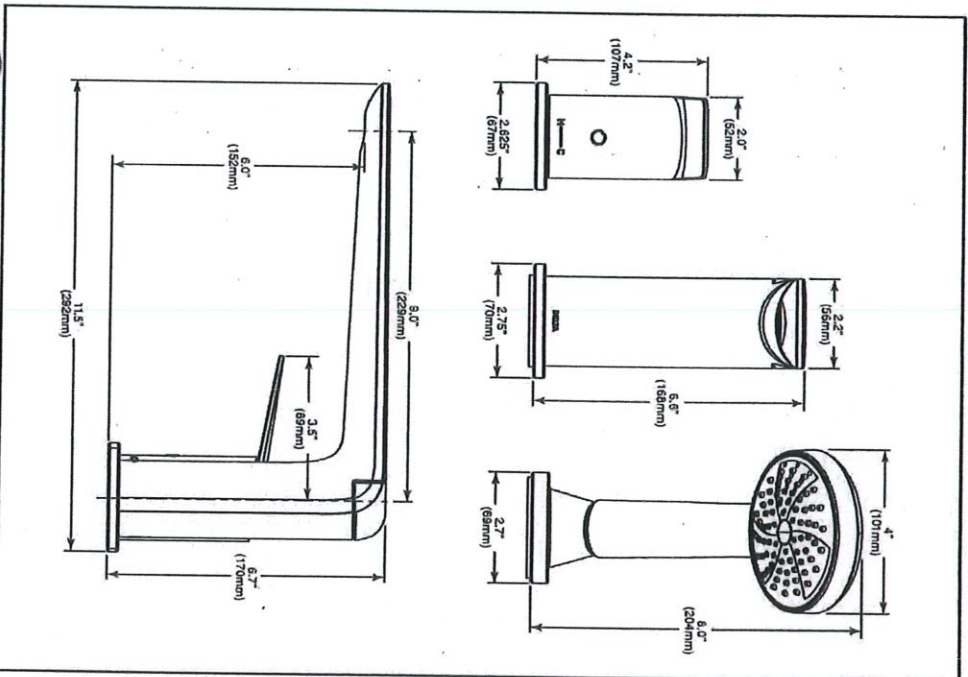


Delta Faucet Company
5541 Linton Avenue, York, PA 17402-20
350 South Enterprise Road, St. Thomas, ON N5P 4L1
© 2018 Delta Faucet Company

DN 50



Submitted Model No.: CHROME-ENROUTE TUB
Specific Features: _____



▲ Designate Proper Finish Suffix.
Delta Faucet Company reserves the right (1) to make changes in specifications and materials, and (2) to change or discontinue models without notice or obligation. Dimensions are for reference only. See current full-line price book or www.deltafaucet.com for finish options and product availability.
DSR-P-13771, Rev. A



BATHROOM FAUCETS

- Portage™ Bath Collection
- Single Handle Roman Tub Faucet with Hand Shower
- Three Hole Installation

STANDARD SPECIFICATIONS:

- Hand Shower maximum flow rate 1.75gpm @ 80psi, 6.6 L/min @ 550KPa
- Trim only for single handle Roman Tub Faucet with Hand Shower
- Hand Shower includes double check valves for backflow prevention
- Temperature only controlled with handle
- Hot/cold indicator
- Rough-in kit must be ordered to complete installation:
 - R3707 for flexible rough-in
 - R3707-4MF for flexible PEX cold expansion rough-in
 - R3707-PX for flexible PEX crimp rough-in
 - R3716 for fixed rough-in
 - R3716-4MF for fixed PEX cold expansion rough-in
 - R3716-PX for fixed PEX crimp rough-in
- There are separate specification sheets on each rough-in kit, if more detail is required

WARRANTY

- Parts and Finish - Lifetime limited warranty, or for commercial purchasers, 10 years for multi-family residential (apartments and condominiums) and 5 years for all other commercial uses, in each case from the date of purchase.
- Electronic Parts and Batteries (if applicable) - 5 years from the date of purchase; or for commercial purchasers, 1 year from the date of purchase. No warranty is provided on batteries.



COMPLIES WITH:

- ASME A112.18.1 / CSA B125.1
- EPA WaterSense®
- Indicates compliance to ICC/ANSI A117.1

Delta Faucet Company
55 E. 11th Street, Indianapolis, IN 46203
3500 N. Meridian Road, St. Joseph, MO 64506
© 2020 Delta Faucet Company



Bristol Sinks
<http://bristolsinks.com/>

PRODUCT NAME : B926 Undermount Sink w/ 15mm Radius Corners

MODEL : B926

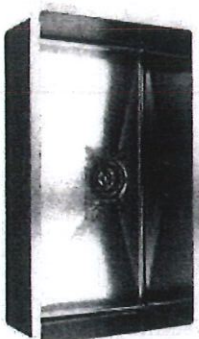
PRICE : \$980.00

SKU : B926

WEIGHT : 35lbs.

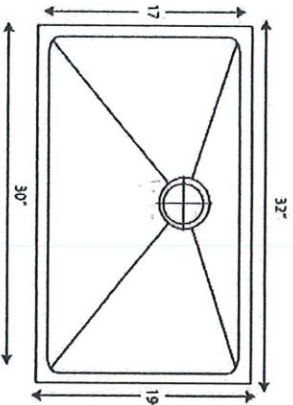
DESCRIPTION

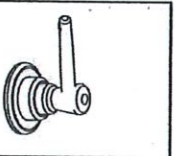
Single Bowl Undermount Sink with 15mm radius corners
Outside dimensions: 32 x 19 x 10"
Minimum Cabinet Size: 33"
Stainless Steel Single Bowl Sink
16 Gauge Type 304 Stainless Steel
Stone Guard undercoating over rubber pad
3 1/2" drain opening
Supplied with installation clip, template and strainer
cUPC certified



ADDITIONAL IMAGES

DV 50

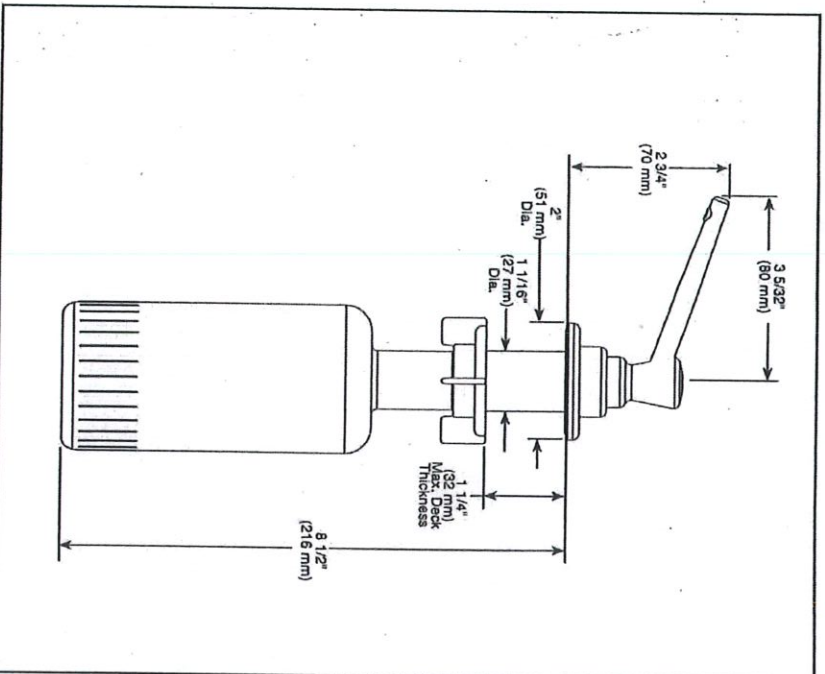




RP1001 ▲

DV 50

Submitted Model No.: _____
Specific Features: _____



▲ Designate Proper Finish Suffix

DELTA **SOAP** **DISPENSER**

STANDARD SPECIFICATIONS:

- 10 ounce bottle.
- Refillable from above the deck.
- 1 1/4" max. deck thickness.
- Order RP31845, for extended mounting nut. Allows for 2 1/2" max. deck thickness.
- Includes RP30395 refill funnel.
- Mounts in standard hole sizes 1 1/4" - 1 1/2".



WARRANTY

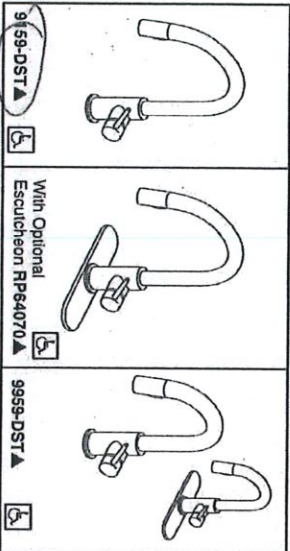
- Lifetime limited warranty on parts (other than electronic parts and batteries) and finishes: or, for commercial users, for 5 years from date of purchase.
- 5 year limited warranty on electronic parts (other than batteries); or, for commercial users, for 1 year from the date of purchase. No warranty is provided on batteries.

Delta reserves the right (1) to make changes in specifications and materials, and (2) to change or discontinue models, both without notice or obligation. To view the most current specifications, visit www.deltafaucet.com for finish options and product availability.

DSF-K-RP1001 Rev. A


DELTA
 FAUCET COMPANY
 55 E. 111th Street, Indianapolis, Indiana 46280
 350 South Edgeview Road, St. Thomas, ON N5P 4L1
 © 2014 Delta Faucet Company of Indiana

DN 50



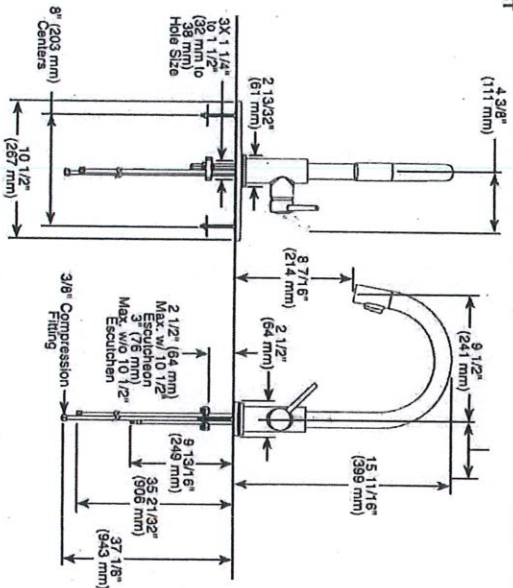
see what Delta can do

KITCHEN FAUCETS

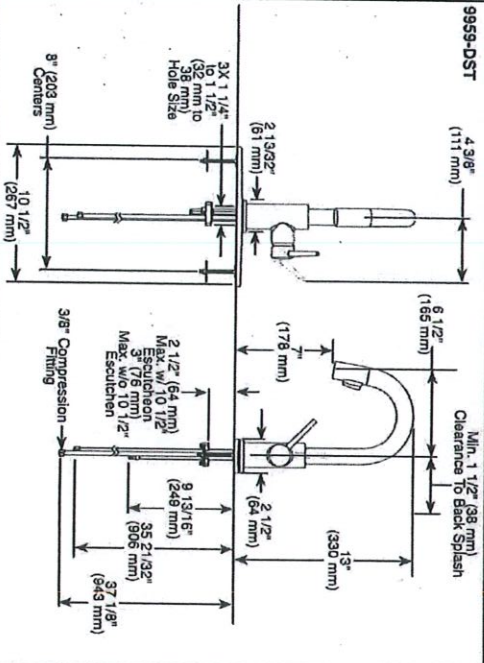
- Trinsic® Collection
- Single Handle Deck Mount
- 2-Function Pull-Down Sprayer

Submitted Model No.: 9159-DST
Specific Features: WITH OPTIONAL ESCUTCHION

9159-DST



9959-DST



▲ Designate proper finish suffix

Delta reserves the right (1) to make changes in specifications and materials, and (2) to change or discontinue products without notice. Dimensions are for reference only. See current full-line price book or www.deltafaucet.com for finish options and product availability.

DSP-K-9159-DST Rev. F

FEATURES:

- Magnetite® Magnetic System
- DIAMOND Seal® Technology
- Touch-Clean® Sprayhead

STANDARD SPECIFICATIONS:

- Maximum 1.8 gpm @ 60 psi, 6.8 L/min @ 4.14 MPa
- One or three hole mount (escutcheon optional, not included)
- Spout rotates 360°
- Control mechanism shall be full-motion valve cartridge
- Two-function wand: Aerial stream or spray
- Red/Blue indicator markings
- Dual integral check valves in sprayer
- Quick connect hoses

WARRANTY

- Parts and Finish - Lifetime limited warranty, or for commercial purchasers, 10 years for multi-family residential (apartments and condominiums) and 5 years for all other commercial uses, in each case from the date of purchase.
- Electronic Parts and Batteries (if applicable) - 5 years from the date of purchase, or for commercial purchasers, 1 year from the date of purchase. No warranty is provided on batteries.

COMPLIES WITH:

- ASME A112.18.1 / CSA B125.1
- ASME A112.18.6
- Indicates compliance to ICC/ANSI A117.1
- Verified compliant with .25% weighted average Pb content regulations.



Delta Faucet Company
351 E. 11th Street, Indianapolis, IN 46202
350 South Washington Street, St. Thomas, CN 00801-4111
© 2019 Delta Faucet Company

DV 50

American Standard

BARrier FREE

STUDIO UNDERCOUNTER SINK

STUDIO™
UNDERCOUNTER SINK
VITREOUS CHINA

- Vitreous china
- Rectangular undercounter mount sink
- Unglazed rim
- Front overflow
- Supplied with mounting kit (047194-0070A) and template (Faucet shown not included)

☒ **0614 000 Unglazed Rim**
540 x 387mm (21-1/4" x 15-1/4")

Bowl size:
464mm (18-1/4") wide,
308mm (12-1/8") front to back,
171mm (6-3/4") deep

☐ **0618 000 Unglazed Rim**
600 x 422mm (23-5/8" x 16-5/8")

Bowl size:
537mm (21-1/8") wide,
356mm (14") front to back,
152mm (6") deep

COMPLIANCE CERTIFICATIONS -

- Meets or exceeds the following Specifications:
- ASME A112.19.2M for Vitreous China Fixtures.
- CAN/CSA B45 Series.

- To Be Specified**
- ☐ Colour:
 - ☐ Faucet:
 - ☐ Faucet Finish:
 - ☐ Supplies & Stops:
 - ☐ Trap 1-1/4" (32 mm):

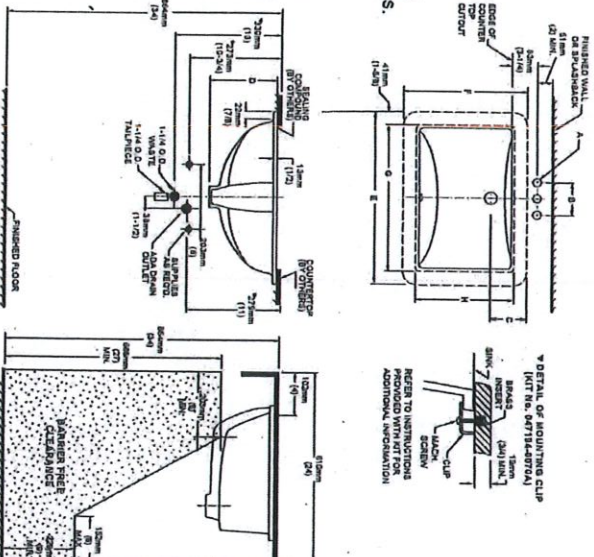
* See faucet section for additional models available

- ☒ **Counter 864mm (34") from finished floor. Sink installed 102mm (4") from front edge of countertop. Countertop thickness to be 25mm (1") minimum. MEETS THE AMERICAN DISABILITIES ACT GUIDELINES AND ANSI A117.1 ACCESSIBLE AND USEABLE BUILDINGS AND FACILITIES - CHECK LOCAL CODES.**

NOTES:
WE RECOMMEND USING SINK AS A TEMPLATE TO DETERMINE PROPER COUNTERTOP CUT. COUNTERTOP 38MM (1-1/2") INSIDE SINK COUNTER. FAUCET IS NOT INCLUDED AND MUST BE ORDERED SEPARATELY. * DIMENSIONS ARE FOR LOCATION OF SUPPLIES AND "P" TRAP ARE SUGGESTED.
* UNDERCOUNTER MOUNTING KIT SUPPLIED WITH SINK.
IMPORTANT: Dimensions of fixtures are nominal and may vary within the range of tolerances established by ANSI Standard A112.19.2. These measurements are subject to change or cancellation. No responsibility is assumed for use of superseded or voided pages.

FAUCET	A	B
CENTRESET	1-1/8" (28mm)	4" (102mm)
SPREAD	1-3/8" (35mm)	8" (203mm)

CAT. NO.	E	F	G	H	C	D
0614 000	864mm (21-1/4")	357mm (13-5/8")	464mm (18-1/4")	308mm (12-1/8")	114mm (4-1/2")	209mm (8-1/4")
0618 000	600mm (23-5/8")	422mm (16-5/8")	537mm (21-1/8")	356mm (14")	109mm (4-1/4")	209mm (8-1/4")



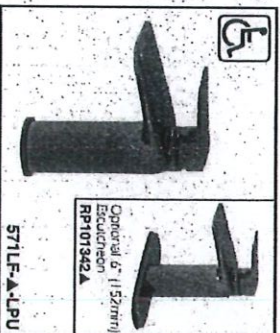
BAS-132

© 2002 American Standard Inc.

11/02

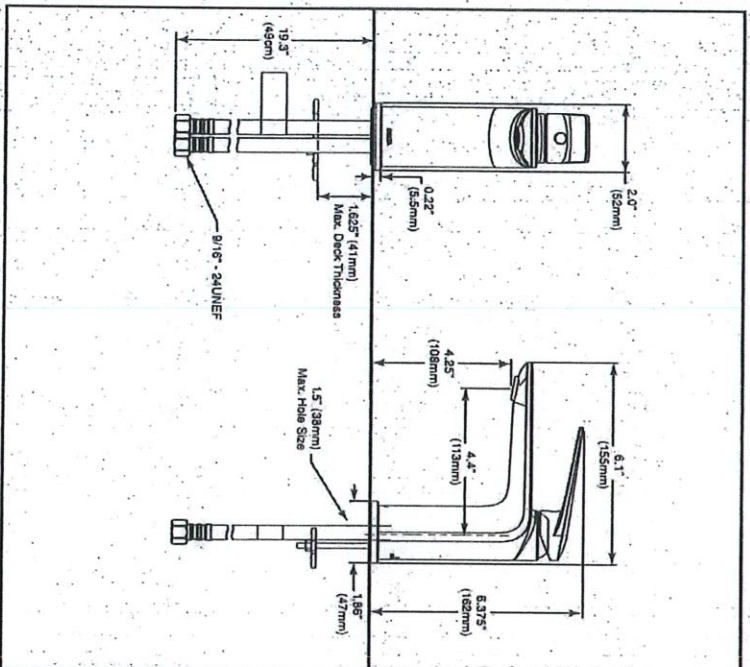


BV 50



Submitted Model No.: CHROME - ALL BATHS

Specific Features: _____



▲ Designate Proper Finish Suffix.

Delta Faucet Company reserves the right (1) to make changes in specifications and materials, and (2) to change or discontinue models, both without notice or obligation. Dimensions are for reference only. See current full-line price book or www.deltafaucet.com for finish options and product availability.

DSP-LS71LF-LPU, Rev. A



see what Delta can do™

BATHROOM FAUCETS

- Portage™ Bath Family
- Single Handle Deck Mount

STANDARD SPECIFICATIONS:

- Max flow rate 1.2 gpm @ 60 psi; 4.5 L/min @ 414 kPa (aerated pressure compensating)
 - Standard single hole mount or three hole mount with optional - 6" (152mm) Escutcheon (sold separately)
 - 1 5/8" (41mm) max. deck thickness
 - Ceramic cartridge
 - Red/blue indicator markings
 - Metal lever handle
 - Solid brass body
 - 19" (483mm) long flexible supply lines with 3/8" supply fittings
 - Rigid Spout
 - Less pop-up, no pop-up hole
 - Less pop-up, no pop-up hole
- OPTIONAL ACCESSORIES:**
(sold separately)
- RP101342A - 6" (152mm) Escutcheon
 - 72173A - push pop-up with overflow
 - 33W576A - push pop-up with overflow holes

WARRANTY

- Parts and Finish - Lifetime limited warranty, or for commercial purchasers, 10 years for multi-family residential (apartments and condominiums) and 5 years for all other commercial uses, in each case from the date of purchase.
- Electronic Parts and Batteries (if applicable) - 5 years from the date of purchase, or for commercial purchasers, 1 year from the date of purchase. No warranty is provided on batteries.



COMPLIES WITH:

- ASME A112.18.1 / CSA B125.1
- EPA WaterSense®
- Verified compliant with 0.25% weighted average Pb content regulations
- Indicates compliance to ICC/ANSI A117.1

Delta Faucet Company
35 E. 11th Street, Indianapolis, IN 46280
3500 N. Meridian Road, St. Thomas, CN, NSP 411
© 2020 Delta Faucet Company