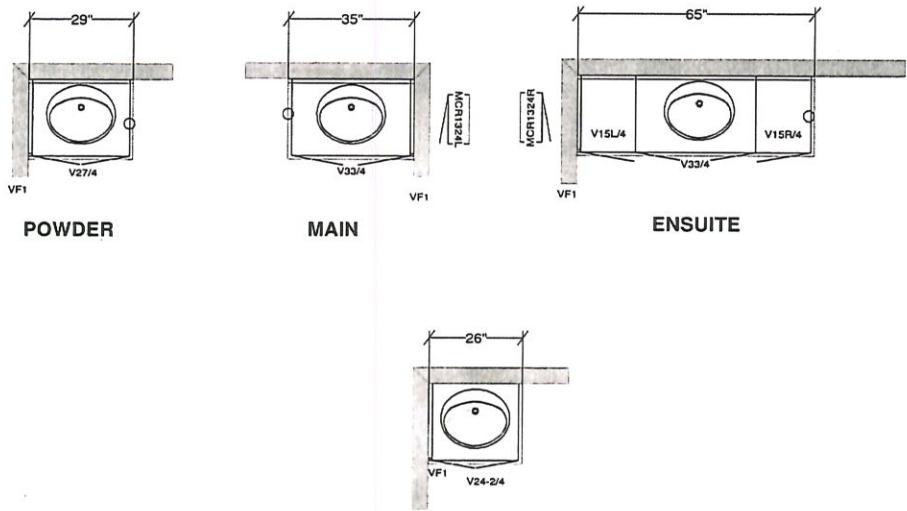
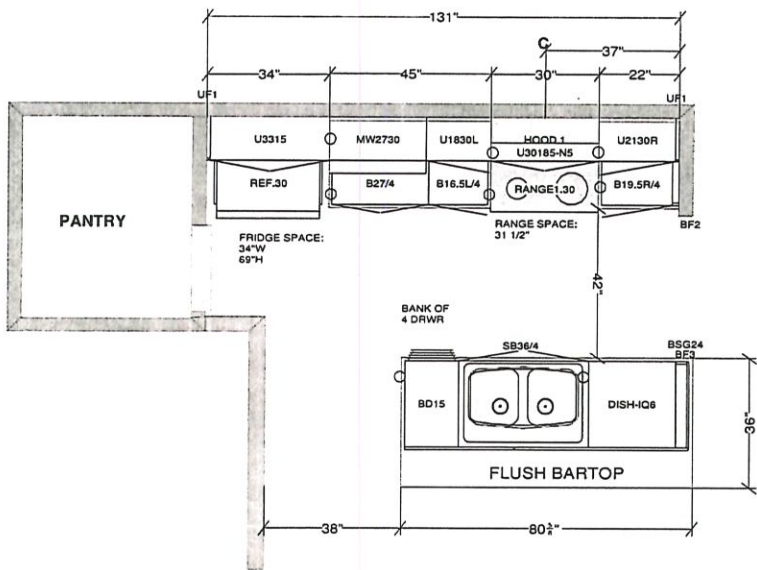


PNT BUK 13 LOT 125

DCR PHOENIX HOMES

TOWNHOUSE 20-18 - ELSTON
KITCHEN / VANITIES
MOUNTING HEIGHT: 84

- LINE 1 - KIT LINE 2
- HARDWARE - STD & 1st UPGRADE
 - STANDARD WHITE INTERIOR
 - METAL DRAWER BOX
 - 6 PCS - 5/8" KICK - FIN. BOTH ENDS
 - 2 PCS - LOOSE FILLER - 6 x 96
 - 2 PCS - 90 DEG. CORNER MOULD
 - 1 PCS - T-MOULD
 - 6 PCS - FLAT MOULDING



| | | | |
|---|--|---|-----------|
| All dimensions .size designations given are subject to verification on job site and adjustment to fit job conditions. | This is an original design and must not be released or copied unless applicable fee has been paid or job order placed. | Designed: 2018-02-28 Printed: 2018-03-01 | |
| | | | |
| SPECTRUM KITCHEN and BATH DESIGN | DRAWN BY: LORI DISAVERIO, B.I.D | | |
| TH 20 - 18 - Elston - KIT_VAN.kit | All | Drawing #: 1 | No Scale. |

FC LC TC