

# TENDER WALL RANGE HOOD

**FABER**  
AIR MATTERS

**A UPGRADED ROUNDED CANOPY HOOD WITH ADVANCED FEATURES.** The upgraded Tender by Faber features a rounded canopy and chimney, advanced electronic controls, an optional remote control and two level energy efficient LED lights. Available with 600 or 300 cfm motors, the Tender delivers your choice of performance level in a stylish chimney style range hood.



## AVAILABLE MODELS

Model #	Size / Color	Motor Class (CFM)	Sound Levels (sones)
TEND30SS600-B	30" Stainless	600 CFM	2.8 - 7.5
TEND36SS600-B	36" Stainless	600 CFM	2.8 - 7.5
TEND30SS300-B	30" Stainless	300 CFM	2.5 - 5.0
TEND36SS300-B	36" Stainless	300 CFM	2.5 - 5.0

LOT 13 DV

## KEY FEATURES



### Backlit electronic controls

Backlit electronic controls with a White LED light to indicate the current speed and two level lighting



### LED bulbs

Low consumption 1 watt LED bulbs with a dimmer light up your cooking but use very little energy



### Remote Control (optional)

Control all features of the hood from the convenience of a wireless remote control (sold separately)

# TENDER WALL RANGE HOOD

**FABER**  
AIR MATTERS

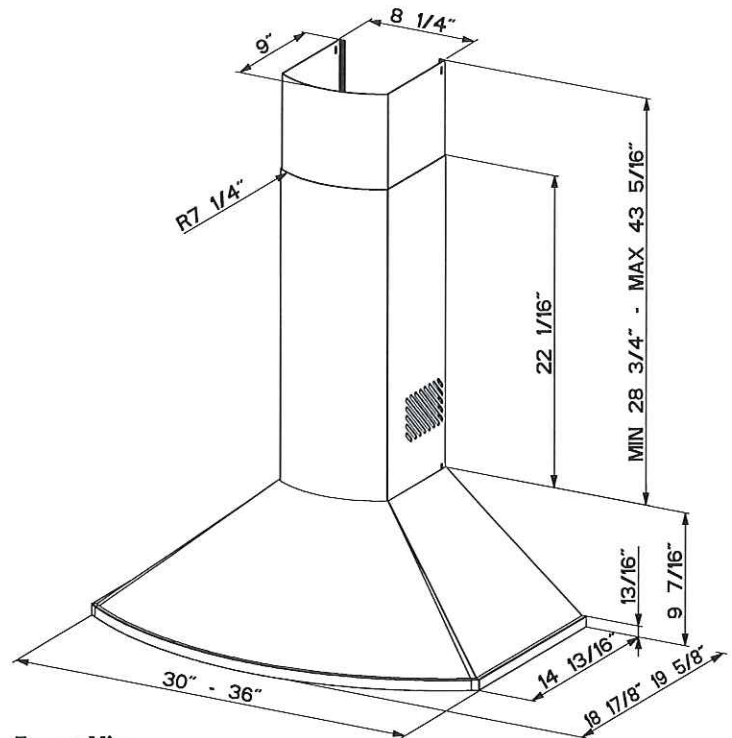
## SPECIFICATIONS

min. / max. ceiling height	7' 9 1/8" - 9' 11 1/8"
convertible to ductless / recirculating	yes - kit sold separately
canopy depth / height	19 5/8" d / 9 7/16" h
high ceiling kit	yes - reaches up to 11' 4 1/2" ceilings
controls	4 speed electronic w/ white led
lighting	2 x 1 (w) led - two level
ducting top	6" round
grease filters	dishwasher safe mesh
10 minute intensive speed	yes
15 minute auto shut off	yes
ADA compliant	yes (with remote control purchase)
power cord included	yes
AC power	320 watts / 2.7 amps

## PERFORMANCE (600 CFM Motor shown)

	SPEED	1	2	3	BOOST
CFM		150	300	450	560
sones		2.8	4.3	6.0	7.5

## DIMENSIONS



Front View

## ACCESSORIES

### # FILTER1 -

#### Charcoal Filter Kit

High quality charcoal filter for use when recirculating the air back into the kitchen. Filters out odor and should be replaced every 6 months

### # HIGHTNDR -

#### High Ceiling Kit

High ceiling kit replaces both the upper chimney with a 39" chimney to reach up to 11' 4 1/2"

### # DUCTCLPL -

#### Ductless Conversion Kit

To convert the Tender to ductless, this kit includes charcoal filters and a diverter to send the air thru the side grates on the lower chimney.

### # BAFFLE2 (30") / BAFFLE3 - (36")

#### Baffle Filter Kit

Upgrade mesh grease filters to stainless baffle grease filters. BAFFLE2 for 30" models, BAFFLE3 for 36" models.

### # REMCTRL -

#### Remote Control

Control all features of the hood from the convenience of a wireless remote control

### # WIREBOX -

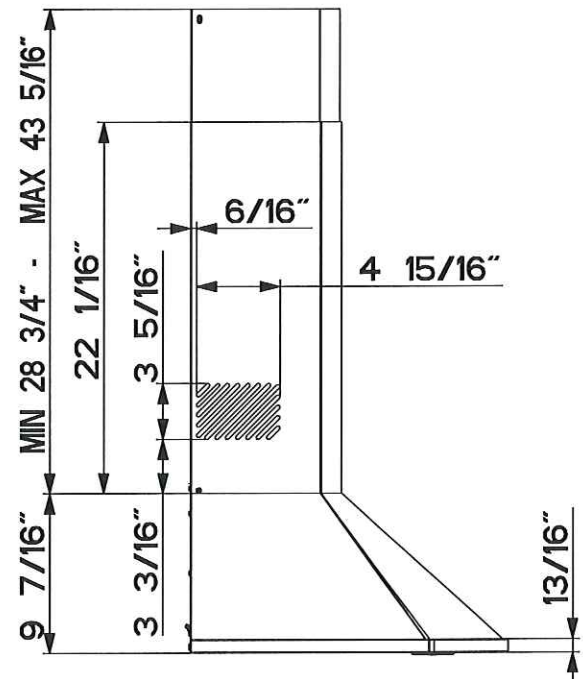
#### Fixed Wiring Box

Replace the power cord with a hard wired box to power the range hood

### # MUDAMPER6 / MUDAMPER8 -

#### Universal Make-Up Air Damper

Satisfies make-up air requirements, this kit uses an air switch to activate the make-up air damper to open and bring fresh air into the home when the hood fan is on. It then closes tightly when the hood is off. The CFM level is not reduced with this accessory.



Side View







## ESSA

### Single Handle Pull-Down Kitchen Faucet



[Pin it](#)

[+ Share](#)

Model #: 9113-BL-DST  
What does this model number mean?

Finish Shown: Matte Black

#### Own this product?

Registering it helps us provide the best service.

Want to save this product so you can quickly find it later?

Need help with your product?

LOT 13 DV  
KITCHEN.

## Product Features and Benefits

- MagnaTite Docking uses a powerful integrated magnet to snap your faucet spray wand precisely into place and hold it there so it stays docked when not in use and doesn't droop over time
- Soft, rubber Touch-Clean spray holes allow you to easily wipe away calcium and lime build-up with the touch of a finger
- DIAMOND Seal Technology is less hassle to install and helps your faucet perform like new for life, reducing leak points and lasting twice as long as the industry standard
- Everything you need is together in one convenient box, including integrated InnoFlex PEX supply lines
- 1 or 3-hole 8" installation
- ADA Compliant
- The high-arc, gooseneck design swivels 360 degrees with a 20-in. retractable hose for added convenience during everyday kitchen tasks
- Lifetime Faucet and Finish Warranty

#### Featured Smart Features:

ADA Compliant

MagnaTite® Docking

DIAMOND™ Seal Technology

With Soap / Lotion Dispenser

## Product Support, Repair Parts & Tech Specs

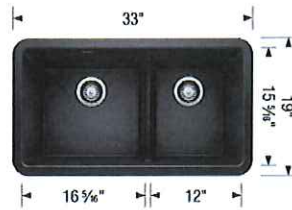
# Product Specification Sheet









## IKON 33 1 3/4 Low Divide

SILGRANIT®



### PRODUCT DIMENSIONS



IKON 33 1 3/4 Low Divide	Colour Finish	Model No.	FEATURES / SPECIFICATIONS
	White	402337	<ul style="list-style-type: none"> <li>Made in Canada</li> <li>Contemporary farmhouse sink with an ultra-durable apron front</li> <li>Double bowl size with a lower sink partition allows you to maneuver large pots, long-handled pans or baking sheets with ease</li> <li>Low divide partition makes it easy to handle large pots and pans</li> <li>Available in a range of non-fading colours</li> <li>SILGRANIT is a high-quality granite composite, made of up to 80% natural granite</li> <li>Heat, scratch and impact resistant</li> <li>IKON kitchen sinks have a non-porous surface making them stain resistant and anti-bacterial</li> <li>Easy to clean without the use of harsh chemicals</li> </ul>
	Truffle	402336	
	Metallic Gray	402335	
	Concrete Gray	402338	
	Cinder	402334	
	Café	402333	
	Biscuit	402332	
	Anthracite	402331	
			<h3>DESIGN AND PLANNING TIPS</h3> <p>Cabinet Size: 36" (915 mm)  Bowl depth: 9 1/4" (235 mm) / 9 1/4" (235 mm)  Apron Front depth: 10" (254 mm)  Rim thickness: 1 1/2" (38 mm)  Depending on cabinet construction, a different cabinet size may be required.  Consult the cabinet manufacturer.</p>

### WARRANTY

Limited Lifetime warranty

### Code/Standards Compliance

BLANCO sinks and faucets are third-party tested and certified to CSA, cUPC, ANSI/ASME and NSF standards and listed by applicable certification bodies. For more information on individual product listings, contact our office or listing organization.

BLANCO CANADA  
100 Corporation Drive  
Brampton, ON L6S 6B5

Tel: 905 494 2400  
Fax: 905 494 2425  
[www.blancocanada.com](http://www.blancocanada.com)

Toll Free: 1 877 425 2626  
Toll Free: 1 877 825 2626

© 2016 BLANCO CANADA



## TRINSIC® Single Handle Vessel Bathroom Faucet



[Pin it](#)

[+ Share](#)

Model #: 759-BL-DST  
What does this model number mean?

Finish Shown: Matte Black

### Own this product?

Registering it helps us provide the best service.

Want to save this product so you can quickly find it later?

Need help with your product?

LOT 13 DV  
POWDER RM.

## Product Features and Benefits

- DIAMOND Seal Technology is less hassle to install and helps your faucet perform like new for life, reducing leak points and lasting twice as long as the industry standard
- Everything you need is together in one convenient box, including integrated InnoFlex PEX supply lines
- Single hole installation
- Less pop-up
- ADA Compliant
- Rigid spout
- Water-efficient faucet helps you conserve water and protect one of Earth's most valuable natural resources
- Lifetime Faucet and Finish Warranty

### Featured Smart Features:

ADA Compliant

DIAMOND™ Seal Technology

## Product Support, Repair Parts & Tech Specs

### SUPPORT INFORMATION:

#### View Parts for this Product:

[View Parts List](#)

[View Parts Diagram](#)

### INSTALLATION INFORMATION



Single hole installation

Number of Handles: 1



LOT 13 DW  
POWDER ROOM.

American  
Standard

 BARRIER FREE

# LOFT® ABOVE COUNTER BASIN FIRE CLAY

## LOFT® ABOVE COUNTER BASIN

### ✓ 0552.000

- Rectangular above counter basin
- Made from fire clay
- Cutout template supplied
- Shown with Times Square Monoblock 7184.101 faucet (Not included)

### Nominal Dimensions:

19-5/8" x 15-3/4" x 5-7/8"  
(499mm x 399mm x 150mm)

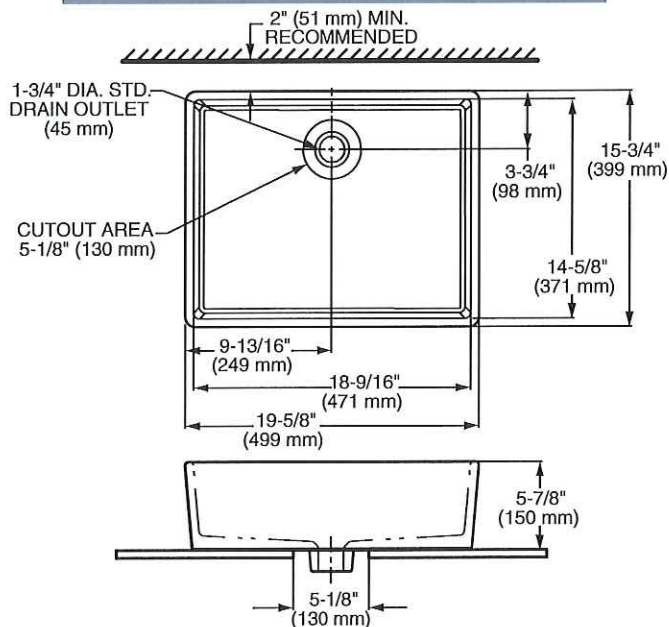
### Bowl sizes:

18-9/16" (471mm) wide,  
14-5/8" (371mm) front to back,  
5" (127mm) deep

### Compliance Certifications -

### Meets or Exceeds the Following Specifications:

- ASME A112.19.2 / CSA B45.1



### To Be Specified:

- ☐ Color: ☐ White
- ☐ Faucet\*:
- ☐ Faucet Finish:
- ☐ Supplies:
- ☐ 1-1/4" Trap:

\* See faucet section for additional models available

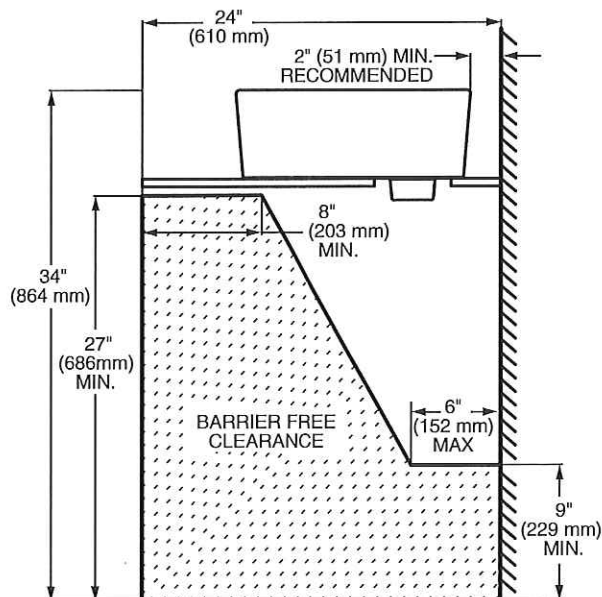
### NOTES:

\* DIMENSIONS SHOWN FOR LOCATION OF SUPPLIES AND "P" TRAP ARE SUGGESTED. FOR COUNTERTOP CUTOUT AND INSTALLATION INSTRUCTIONS USE TEMPLATE SUPPLIED WITH SINK. FITTINGS NOT INCLUDED WITH FIXTURE AND MUST BE ORDERED SEPARATELY. SEALING COMPOUND SUPPLIED BY OTHERS.

**IMPORTANT:** Dimensions of fixtures are nominal and may vary within the range of tolerances established by ASME A112.19.2 / CSA B45.1. These measurements are subject to change or cancellation. No responsibility is assumed for use of superseded or voided pages.



MEETS THE AMERICANS WITH DISABILITIES ACT GUIDELINES AND ICC ANSI A117.1 ACCESSIBLE AND USABLE BUILDINGS AND FACILITIES - CHECK LOCAL CODES. Install lavatory 864mm (34") from finished floor. Lavatory installed 51mm (2") minimum from front edge of countertop provides 686mm (27") knee clearance area.



**TOWN SQUARE™ COUNTERTOP SINK**

- Historic American classic design
- Clean straight lines with classic ogee curves
- Tapered interior bowl with flat bottom design, provides dramatic look
- Self-rimming fireclay countertop sink (Faucet shown not included)
- Front overflow
- Supplied with template
- Made from fine fireclay



- ☐ **0700 004** Faucet holes on 102mm (4") centres (Illustrated)
- ☒ **0700 008** Faucet holes on 203mm (8") centres
- ☐ **0700 001** Centre Hole Only

**Nominal Dimensions:**

584 x 470mm  
(23" x 18-1/2")

**Bowl Sizes:**

470mm (18-1/2") wide,  
267mm (10-1/2") front to back,  
159mm (6-1/4") deep

**COMPLIANCE CERTIFICATIONS –**

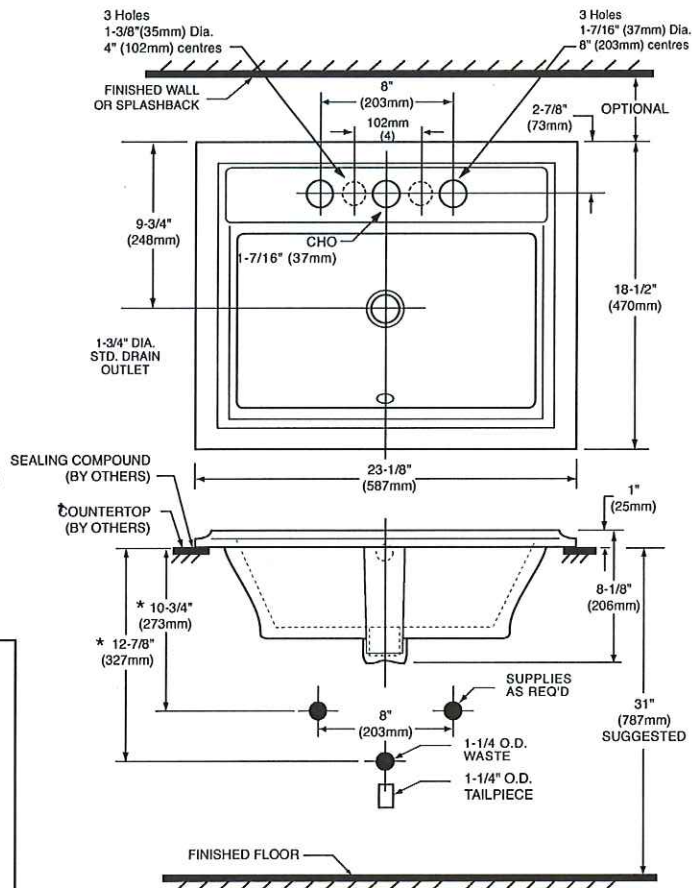
Meets or exceeds the following Specifications:

- ASME A112.19.2M for China Fixtures.
- CAN/CSA B45 Series.

**To Be Specified**

- ☐ Colour:
- ☐ Town Square Faucet & Finish:
  - ☐ Centreset Sink Faucet: 2555 201 (shown)
  - ☐ Widespread Sink Faucet: 2555 801
- ☐ Other Sink Faucet & Finish:
- ☐ Supplies & Stops:
- ☐ Trap 1-1/4" (32 mm):

\* See faucet section for additional models available



**NOTES:**

\* DIMENSIONS SHOWN FOR LOCATION OF SUPPLIES AND "P" TRAPS ARE SUGGESTED. FOR COUNTERTOP CUTOUT AND INSTALLATION INSTRUCTIONS USE TEMPLATE SUPPLIED WITH SINK.

FAUCET NOT INCLUDED AND MUST BE ORDERED SEPARATELY. INSTALLATION INSTRUCTIONS SUPPLIED WITH SINK.

IMPORTANT: Dimensions of fixtures are nominal and may vary within the range of tolerance established by ANSI Standard A112.19.2

These measurements are subject to change or cancellation. No responsibility is assumed for use of superseded or voided pages.



## TRINSIC® Monitor 14 Series H<sub>2</sub>Okinetic Tub & Shower Trim



[Pin it](#)

[+ Share](#)

Model #: T14459-BL  
What does this model number mean?

Finish Shown: Matte Black

### Own this product?

Registering it helps us  
provide the best service.

Want to save this  
product so you can  
quickly find it later?

Need help with your product?

LOT 13 DV  
MAIN BATH

## Product Features and Benefits

- H2Okinetic Shower technology sculpts water into a unique wave pattern, forming a powerful drench spray
- Gives you the feeling of more water without using more water
- Monitor pressure balance valve keeps water temperature within a safe +/-3degrees F (+/-1.6degrees C), helping to protect you from sudden changes in hot or cold water pressure
- Spray settings include: H2OKinetic spray
- H2OKinetic spray creates a shower with more warmth, coverage and intensity
- Trim kit only, must order MultiChoice Universal Valve separately to complete the unit
- ADA Compliant
- WaterSense labeled shower heads use at least 20% less water than the industry standard without compromising performance
- Lifetime Faucet and Finish Warranty

### Featured Smart Features:

ADA Compliant

MultiChoice® Universal Valve

H2Okinetic® Technology

Monitor

## Product Support, Repair Parts & Tech Specs





## TRINSIC® Two Handle Widespread Bathroom Faucet



[Pin it](#)

[+ Share](#)

Model #: 3559-BLMPU-DST  
What does this model number mean?

Finish Shown: Matte Black

### Own this product?

Registering it helps us  
provide the best service.

Want to save this  
product so you can  
quickly find it later?

Need help with your product?

LOT 13 DV

(2) ENSUITE

(1) MAIN BATH

## Product Features and Benefits

- DIAMOND Seal Technology is less hassle to install and helps your faucet perform like new for life, reducing leak points and lasting twice as long as the industry standard
- Everything you need is together in one convenient box, including integrated InnoFlex PEX supply lines
- 3-hole 4-16" installation
- Metal pop-up
- ADA Compliant
- WaterSense labeled faucet uses at least 20% less water than the industry standard without compromising performance
- Lifetime Faucet and Finish Warranty

### Featured Smart Features:

ADA Compliant

DIAMOND™ Seal Technology

## Product Support, Repair Parts & Tech Specs

### SUPPORT INFORMATION:

#### View Parts for this Product:

[View Parts List](#)

[View Parts Diagram](#)

### INSTALLATION INFORMATION



3-hole 4-16" installation

Number of Handles:

2



BARRIER FREE

STUDIO UNDERCOUNTER SINK

- Vitreous china
- Rectangular undercounter mount sink
- Unglazed rim
- Front overflow
- Supplied with mounting kit (047194-0070A) and template (Faucet shown not included)

☒ 0614 000 Unglazed Rim

540 x 387mm (21-1/4" x 15-1/4")

Bowl size:

464mm (18-1/4") wide,  
308mm (12-1/8") front to back,  
171mm (6-3/4") deep

☐ 0618 000 Unglazed Rim

600 x 422mm (23-5/8" x 16-5/8")

Bowl size:

537mm (21-1/8") wide,  
356mm (14") front to back,  
152mm (6") deep

COMPLIANCE CERTIFICATIONS –

Meets or exceeds the following Specifications:

- ASME A112.19.2M for Vitreous China Fixtures.
- CAN/CSA B45 Series.

To Be Specified

- ☐ Colour:
- ☐ Faucet\*:
- ☐ Faucet Finish:
- ☐ Supplies & Stops:
- ☐ Trap 1-1/4" (32 mm):

\* See faucet section for additional models available



- Countertop 864mm (34") from finished floor. Sink installed 102mm (4") from front edge of countertop. Countertop thickness to be 25mm (1") maximum.
- MEETS THE AMERICAN DISABILITIES ACT GUIDELINES AND ANSI A117.1 ACCESSIBLE AND USEABLE BUILDINGS AND FACILITIES - CHECK LOCAL CODES.**

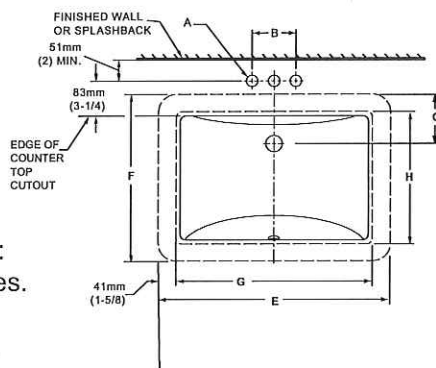
NOTES:

WE RECOMMEND USING SINK AS A TEMPLATE TO DETERMINE PROPER CONTOUR. CUT COUNTERTOP 38mm (1-1/2") INSIDE SINK CONTOUR. FAUCETS NOT INCLUDED AND MUST BE ORDERED SEPARATELY.

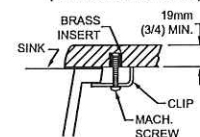
\* DIMENSIONS SHOWN FOR LOCATION OF SUPPLIES AND "P" TRAP ARE SUGGESTED.

▼ UNDERCOUNTER MOUNTING KIT SUPPLIED WITH SINK.

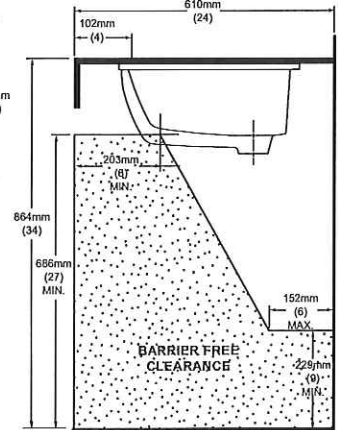
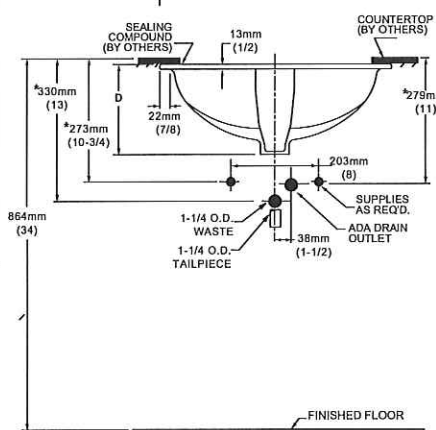
IMPORTANT: Dimensions of fixtures are nominal and may vary within the range of tolerances established by ANSI Standard A112.19.2. These measurements are subject to change or cancellation. No responsibility is assumed for use of superseded or voided pages.



▼ DETAIL OF MOUNTING CLIP (KIT No. 047194-0070A)



REFER TO INSTRUCTIONS PROVIDED WITH KIT FOR ADDITIONAL INFORMATION



FAUCET	A	B
CENTRESET	1-1/8 (29mm)	4 (102mm)
SPREAD	1-3/8 (35mm)	8 (203mm)

CAT. NO.	E	F	G	H	C	D
0614 000	540mm (21-1/4)	387mm (15-1/4)	464mm (18-1/4)	308mm (12-1/8)	114mm (4-1/2)	209mm (8-1/4)
0618 000	600mm (23-5/8)	422mm (16-5/8)	537mm (21-1/8)	356mm (14)	108mm (4-1/4)	209mm (8-1/4)



## TRINSIC® Roman Tub Trim



[Pin it](#)

[Share](#)

Model #: T2759-BL  
What does this model number mean?

Finish Shown: Matte Black

### Own this product?

Registering it helps us provide the best service.

Want to save this product so you can quickly find it later?

Need help with your product?

LOT 13 DV  
ENSUITE

## Product Features and Benefits

- ADA Compliant
- Trim kit only, must purchase rough-in R2707 separately to complete the unit
- Alternative rough options: R2707-PX (pex crimp applications), R2707-MF (memory fitting/cold expansion applications)
- 3-hole 8-16" installation
- Rigid slip-on spout
- Lifetime Faucet and Finish Warranty

### Featured Smart Features:

ADA Compliant

## Product Support, Repair Parts & Tech Specs

### SUPPORT INFORMATION:

#### View Parts for this Product:

[View Parts List](#)

[View Parts Diagram](#)

[Download/Print Parts Diagram](#)

### INSTALLATION INFORMATION



3-hole 8-16" installation

### TROUBLESHOOTING RESOURCES





## TRINSIC® Monitor 14 Series H<sub>2</sub>Okinetic Shower Trim


[Pin it](#)
[+ Share](#)

Model #: T14259-BL  
What does this model number mean?

Finish Shown: Matte Black

### Own this product?

Registering it helps us provide the best service.

Want to save this product so you can quickly find it later?

Need help with your product?

LOT 13 BV  
ENSUITE

## Product Features and Benefits

- H<sub>2</sub>Okinetic Shower technology sculpts water into a unique wave pattern, forming a powerful drench spray
- Gives you the feeling of more water without using more water
- Monitor pressure balance valve keeps water temperature within a safe +/-3degrees F (+/-1.6degrees C), helping to protect you from sudden changes in hot or cold water pressure
- Spray settings include: H<sub>2</sub>Okinetic spray
- H<sub>2</sub>Okinetic spray creates a shower with more warmth, coverage and intensity
- Trim kit only, must order MultiChoice Universal Valve separately to complete the unit
- ADA Compliant
- WaterSense labeled shower heads use at least 20% less water than the industry standard without compromising performance
- Lifetime Faucet and Finish Warranty

### Featured Smart Features:

ADA Compliant

MultiChoice® Universal Valve

H<sub>2</sub>Okinetic® Technology

Monitor

## Product Support, Repair Parts & Tech Specs



## TRINSIC® 6-Setting 3-Port Diverter Trim


[Pin it](#)
[+ Share](#)

Model #: T11959-BL  
What does this model number mean?

Finish Shown: Matte Black

### Own this product?

Registering it helps us  
provide the best service.

Want to save this  
product so you can  
quickly find it later?

Need help with your product?

LOT 13 DV  
ENSUITE

## Product Features and Benefits

- Trim kit only, must purchase rough separately
- 6-setting, 3-port diverter
- Perfectly coordinates with the Delta Trinsic Bath collection
- ADA Compliant
- Lifetime Faucet and Finish Warranty

### Featured Smart Features:

ADA Compliant

## Product Support, Repair Parts & Tech Specs

### SUPPORT INFORMATION:

#### View Parts for this Product:

[View Parts List](#)

[View Parts Diagram](#)

[Download/Print Parts Diagram](#)

#### Installation Instructions / Owner's Manual

[View](#) [Download / Print](#)

### TROUBLESHOOTING RESOURCES

[Troubleshoot Your Faucet](#)

[Frequently Asked Questions](#)

[General Faucet Installation Instructions](#)



## DELTA

### ActivTouch HS 1.75 GPM w/ Slide Bar 9S



[Pin it](#)

[Share](#)

Model #: 51549-BL  
What does this model number mean?

Finish Shown: Matte Black

#### Own this product?

Registering it helps us provide the best service.

Want to save this product so you can quickly find it later?

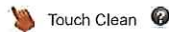
Need help with your product?

LOT 13 DV  
ENSUITE

## Product Features and Benefits

- Soft, rubber Touch-Clean spray holes allow you to easily wipe away calcium and lime build-up from the spray face of your shower head and hand shower with the touch of a finger
- Spray settings include: Full Body spray, Fast Massage spray, Full Spray with Massage, Shampoo Rinsing spray, Shampoo Rinsing spray with Massage, Drenching spray, Drenching spray with Massage, Soft Full spray, and Pause
- Pause feature reduces water to a trickle, giving you space for shaving, lathering and other shower tasks while maintaining your temperature settings
- Includes 60-82 in. stretchable metal hose
- WaterSense labeled showers use at least 20% less water than the industry standard@saving you money without compromising performance
- Certified dual neoperl check valves for backflow protection
- Three spray selection buttons for a simple one-handed operation
- Soft touch non-slip grip
- Slide bar bracket for hands-free showering
- Slide bar w/adjustable slide (allows for adjustable shower height)
- Not to be used as a grab bar
- Lifetime Faucet and Finish Warranty

#### Featured Smart Features:







## DELTA

### Wall Elbow for Hand Shower



Model #: 50560-BL  
What does this model number mean?

Finish Shown: Matte Black

#### Own this product?

Registering it helps us provide the best service.

Want to save this product so you can quickly find it later?

Need help with your product?

LOT 13 DV  
ENSUITE

## Product Features and Benefits

- Matte Black finish
- 90 degree wall elbow
- Can be used for replacement or for new construction installation
- RP32549 and RP3913 Replacement
- Personal shower wall supply
- Genuine Delta repair part
- Overall Product Dimensions: 2-3/8" H x 1-1/2" D x 2-3/16" W
- Lifetime Faucet and Finish Warranty

## Product Support, Repair Parts & Tech Specs

### SUPPORT INFORMATION:

#### Installation Instructions / Owner's Manual

[View](#) [Download / Print](#)

#### Technical Specifications

[View](#) [Download / Print](#)

### TROUBLESHOOTING RESOURCES

[Troubleshoot Your Faucet](#)

[Frequently Asked Questions](#)

[General Faucet Installation Instructions](#)

**KINDRED**

**QSL2020/7**



**Optional Accessories**



CA1W



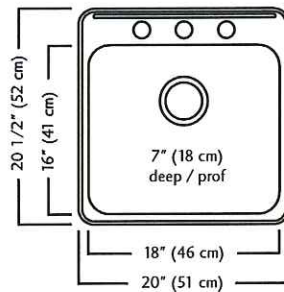
DBR10S



MB1610



BG11S



## QSL2020/7 SPECIFICATION

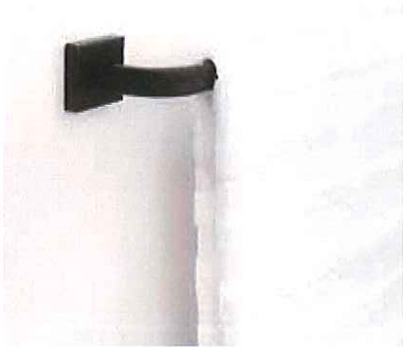
Model QSL2020/7 is a single bowl, ledgeback sink manufactured by Franke Kindred Canada Limited from 20 gauge, 18-8 stainless steel. Product has a bright mirror finished rim and satin finished bowl. Sink is fully undercoated and has the EZTorque installation system. Basket strainer waste fitting (3 1/2", 89 mm) and installation kit are included. Sink is backed with a limited buyer lifetime warranty.

- O.D. 20 1/2" x 20" x 7" (52 x 51 x 18 cm)
- **Recommended for minimum 24" cabinet**

QSL2020/7/3 3 hole - 1 1/2" diameter, 4" center-to-center FUN# 101.0045.226

QSL2020/7/4 4 hole - 4th hole on right hand side FUN# 101.0045.227

QSL2020/7/1 1 hole on center FUN# 101.0045.225



The ultimate in minimalism, our Allusion bath collection features a seamless, sculptural presence with bold curves. Now available in two contemporary finishes: Polished Chrome and Matte Black.

Strong lines and understated curves in a clean design

- › VERSATILE DESIGN TO SUIT ANY BATHROOM
- › CONCEALED SCREW MOUNT ENSURES A SLEEK CONTEMPORARY INSTALLATION
- › INCLUDES MOUNTING HARDWARE FOR EASY SETUP
- › COORDINATES WITH THE TAYMOR CATANA OR EQUINOX DOOR LEVER WITH SQUARE ROSE



LIMITED LIFETIME WARRANTY

BUILDER PACK

PHOTO	DESCRIPTION	MATTE BLACK	POLISHED CHROME
	18" TOWEL BAR 24" TOWEL BAR	04-32518BLK 04-32524BLK	04-32518 04-32524
	SINGLE ROBE HOOK	04-32501BLK	04-32501
	HAND TOWEL BAR	04-32510BLK	04-32510
	PAPER HOLDER	04-32548BLK	04-32548





LOT 13 dv.

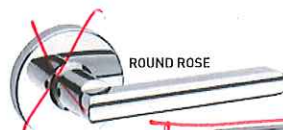
# Taymor®

## PRODUCT SPECIFICATIONS

## THE PREMIER LINE VEGA LEVERSET

### SPECIFICATIONS

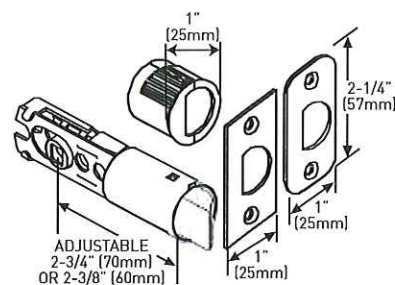
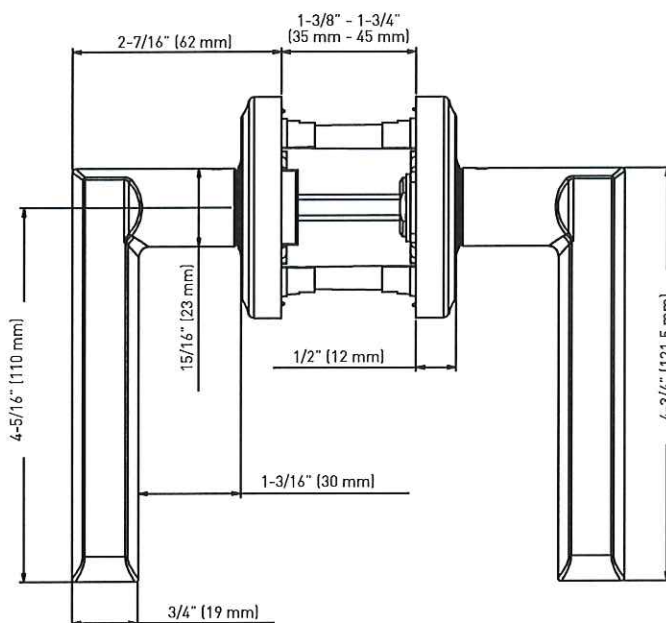
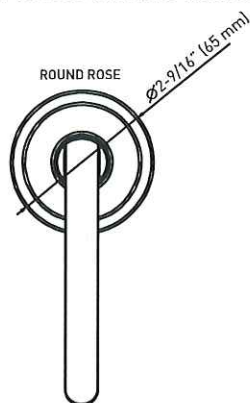
- INTERIOR LOCK SOLUTION FOR SINGLE AND MULTI-FAMILY RESIDENTIAL BUILDINGS
- UNIVERSAL 6-IN-1 LATCH: DRIVE IN, SQUARE MORTISE AND RADIUS CORNER WITH ADJUSTABLE BACKSET: 2-3/8" (60 mm) – 2-3/4" (70 mm)
- STANDARD BORE HOLES: 2-1/8" (54 mm)
- FITS STANDARD DOOR THICKNESS: 1-3/8" (35 mm) – 1-3/4" (45 mm)
- FULL LIP RADIUS CORNER STRIKE WITH ADJUSTABLE TAB STANDARD: 1-3/4" x 2-1/4" (45 mm x 57 mm)
- PUSH BUTTON AUTO-RELEASE ON PRIVACY FUNCTION



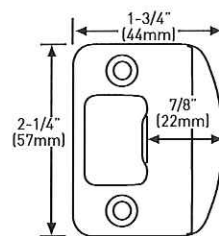
GRADE  
**3**  
ANSI GRADE 3



LIMITED LIFETIME MECHANICAL & FINISH WARRANTY



6-IN-1 PRIVACY/PASSAGE LATCH



FULL LIP RADIUS STRIKE

MEASUREMENTS SUBJECT TO A 3% VARIANCE

MEASUREMENTS ARE FOR REFERENCE ONLY. TAYMOR RESERVES THE RIGHT TO CHANGE THE PRODUCT SPECS WITHOUT NOTICE. FOR PRODUCT WARRANTY, PLEASE VISIT TAYMOR WEBSITE FOR DETAILS [www.taymor.com](http://www.taymor.com)

### VEGA - SQUARE ROSE

BUILDER PACK	PRIVACY	PASSAGE		DUMMY
SATIN NICKEL 15	30-D006724SN	30-D006734SN	-	30-674SN
MATTE BLACK 19	30-D006724BLK	30-D006734BLK	-	30-674BLK
POLISHED CHROME 26	30-D006724PC	30-D006734PC	-	30-674PC
SATIN CHROME 26D	30-D006724SC	30-D006734SC	-	30-674SC
CASE QTY 20				
RETAIL PACK				
SATIN NICKEL 15	31-FV006724SN	31-FV006734SN	-	-
CASE QTY 4				

### VEGA - ROUND ROSE

BUILDER PACK	PRIVACY	PASSAGE	INSIDE TRIM	DUMMY
SATIN NICKEL 15	30-D006424SN	30-D006434SN	30-HL0064SN	30-644SN
MATTE BLACK 19	30-D006424BLK	30-D006434BLK	30-HL0064BLK	30-644BLK
POLISHED CHROME 26	30-D006424PC	30-D006434PC	30-HL0064PC	30-644PC
SATIN CHROME 26D	30-D006424SC	30-D006434SC	30-HL0064SC	30-644SC
CASE QTY 20				
RETAIL PACK				
SATIN NICKEL 15	31-FV006424SN	31-FV006434SN	-	-
CASE QTY 4				



# HERITAGE® SERIES

EXPO

ARTISTIC | CONTEMPORARY | SLEEK



NEW  
Logan™

HERITAGE®  
SERIES



LINCOLN PARK™



new

LOGAN™



WINSLOW™

LOT 13 DV.



# ASHFORD

## PROFESSIONAL SERIES® HANDLESET



MANCHESTER  
INSIDE KNOB



CAPRI  
INSIDE KNOB  
FOR MATTE BLACK  
FINISH ONLY

### SPECIFICATIONS

- › INCLUDES MANCHESTER KNOB (CAPRI KNOB FOR MATTE BLACK OPTION)
- › COMPATIBLE WITH BOTH PREMIER AND PROFESSIONAL SERIES® LOCKSETS
- › UNIVERSAL 6-IN-1 LATCH: DRIVE IN, SQUARE MORTISE AND RADIUS CORNER WITH ADJUSTABLE BACKSET: 2-3/8" (60 mm) - 2-3/4" (70 mm)
- › HIGH TENSILE STEEL ANTI-SAW DEADBOLT WITH 1" THROW
- › STANDARD CENTER TO CENTER BORE DISTANCE: 5-1/2" (140 mm)
- › STANDARD BORE HOLES: 2-1/8" (54 mm)
- › FITS STANDARD DOOR THICKNESS: 1-3/8" TO 1-3/4" (35 mm-45 mm)
- › 4 ADJUSTABLE MOUNTING POSITIONS
- › FULL LIP RADIUS CORNER SPRING LATCH STRIKE WITH ADJUSTABLE TAB
- › HIGH SECURITY DEADBOLT STRIKE
- › LIMITED LIFETIME MECHANICAL WARRANTY
- › 5 YEAR FINISH WARRANTY

GRADE  
**3**

ANSI GRADE 3



#### EXTENSION KIT AVAILABLE

Optional Extension Kit accommodates doors that are 2-1/4" thick



#### FULL KEYING SERVICES AVAILABLE

WR5 keyway, packaged in Keyed Different (KD)

RETAIL PACK	AGED BRONZE 10B+	SATIN NICKEL 15	ANTIQUE NICKEL 17A	MATTE BLACK 19	CASE PACK
INSIDE TRIM	MANCHESTER KNOB	MANCHESTER KNOB	MANCHESTER KNOB	CAPRI KNOB	
6-IN-1 ADJUSTABLE LATCH - KD	34-FV0477	34-FV0467	34-FV0457	34-FV0482	6