



see what Delta can do™

LOT 52 FC
POWDER, MAIN; ENSUITE

Lahara Two Handle Centerset Lavatory Faucet

Model Number: 2538-SSMPU-DST



Features & Benefits

- Lahara, inspired by the beauty and bliss created by waves
- The elegant, one-piece curved handles and sleek spout of Lahara compliments any decor.
- Fits 2 1/4 max. deck thickness
- Two handle design for precise temperature control
- DIAMOND Valve
- Metal pop-up drain included

Smart Features

-  ADA Compliant
 -  DIAMOND™ Seal Technology
 -  WaterSense® Labeled Product
 -  Water-Efficient
 -  Brilliance® Finish
 -  Legislation Compliant
- This product meets EPA criteria for WaterSense.

LOT 52 FC
ENSUITE SHOWER

MAAX SUBMITTAL SPECIFICATIONS

Carlton I

MODEL NUMBER 100961

DIMENSIONS: 48" x 35" x 75" Fiberglass



Vivez l'expérience
MAAX[®]
Enjoy the experience

STANDARD FEATURES

- 1-piece shower without roof cap
- Integrated shelf and seat
- Center drain

OPTIONS

- ABS shower drain with Chrome stainless steel grid
- PVC shower drain with Chrome stainless steel grid
- ABS shower drain with ABS grid, white or bone

UNIQUE FEATURES

- None

SYSTEMS

- None

DOOR SELECTION

Combine with MAAX's complete shower door offering visit www.maax.com

CERTIFICATIONS

Maax products adhere to one or more of the following certifications:



Project :
Contractor :
MAAX Representative : Tel :
Date :

www.maax.com

2013-02-26

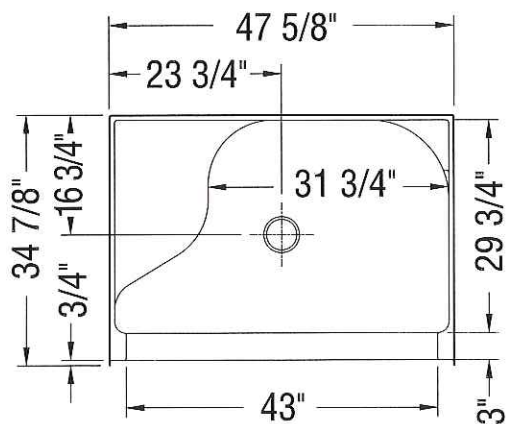
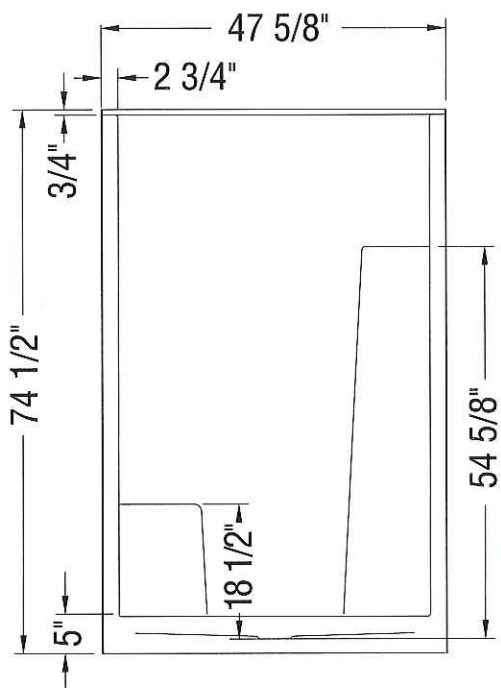
MAAX SUBMITTAL SPECIFICATIONS

Carlton I

MODEL NUMBER 100961

TECHNICAL DRAWINGS

Vivez l'expérience
MAAX[®]
Enjoy the experience



All dimensions are approximate. Structure measurements must be verified against the unit to ensure proper fit.

American Standard

LOT 52 FC
ENSUITE



BARRIER FREE

STUDIO™
UNDERCOUNTER SINK
VITREOUS CHINA

STUDIO UNDERCOUNTER SINK

- Vitreous china
- Rectangular undercounter mount sink
- Unglazed rim
- Front overflow
- Supplied with mounting kit (047194-0070A) and template (Faucet shown not included)

☐ 0614 000 Unglazed Rim

540 x 387mm (21-1/4" x 15-1/4")

Bowl size:
464mm (18-1/4") wide,
308mm (12-1/8") front to back,
171mm (6-3/4") deep

☐ 0618 000 Unglazed Rim

600 x 422mm (23-5/8" x 16-5/8")

Bowl size:
537mm (21-1/8") wide,
356mm (14") front to back,
152mm (6") deep

COMPLIANCE CERTIFICATIONS –
Meets or exceeds the following Specifications:
• ASME A112.19.2M for Vitreous China Fixtures.
• CAN/CSA B45 Series.

To Be Specified

- ☐ Colour:
- ☐ Faucet*:
- ☐ Faucet Finish:
- ☐ Supplies & Stops:
- ☐ Trap 1-1/4" (32 mm):

* See faucet section for additional models available



• Countertop 864mm (34") from finished floor. Sink installed 102mm (4") from front edge of countertop. Countertop thickness to be 25mm (1") maximum.
MEETS THE AMERICAN DISABILITIES ACT GUIDELINES AND ANSI A117.1 ACCESSIBLE AND USEABLE BUILDINGS AND FACILITIES - CHECK LOCAL CODES.

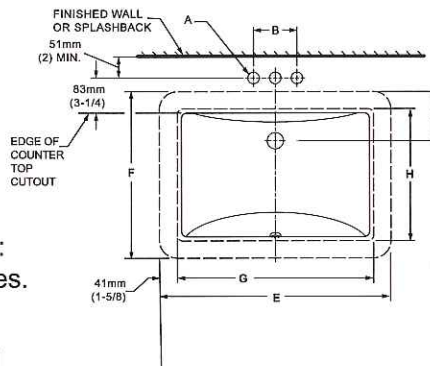
NOTES:

WE RECOMMEND USING SINK AS A TEMPLATE TO DETERMINE PROPER CONTOUR. CUT COUNTERTOP 38mm (1-1/2") INSIDE SINK CONTOUR. FAUCETS NOT INCLUDED AND MUST BE ORDERED SEPARATELY.

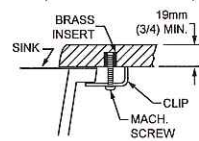
* DIMENSIONS SHOWN FOR LOCATION OF SUPPLIES AND "P" TRAP ARE SUGGESTED.

▼ UNDERCOUNTER MOUNTING KIT SUPPLIED WITH SINK.

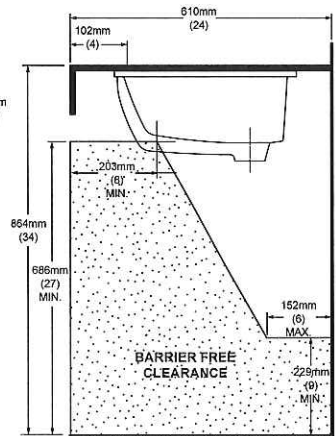
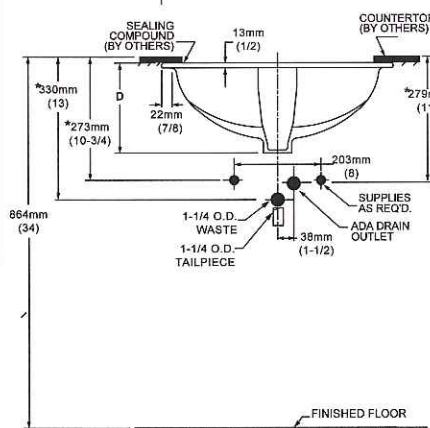
IMPORTANT: Dimensions of fixtures are nominal and may vary within the range of tolerances established by ANSI Standard A112.19.2. These measurements are subject to change or cancellation. No responsibility is assumed for use of superseded or voided pages.



▼ DETAIL OF MOUNTING CLIP (KIT No. 047194-0070A)



REFER TO INSTRUCTIONS PROVIDED WITH KIT FOR ADDITIONAL INFORMATION



FAUCET	A	B
CENTRESET	1-1/8 (29mm)	4 (102mm)
SPREAD	1-3/8 (35mm)	8 (203mm)

CAT. NO.	E	F	G	H	C	D
0614 000	540mm (21-1/4)	387mm (15-1/4)	464mm (18-1/4)	308mm (12-1/8)	114mm (4-1/2)	209mm (8-1/4)
0618 000	600mm (23-5/8)	422mm (16-5/8)	537mm (21-1/8)	356mm (14)	108mm (4-1/4)	209mm (8-1/4)