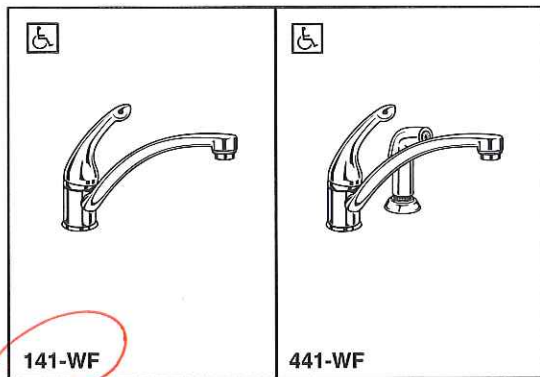
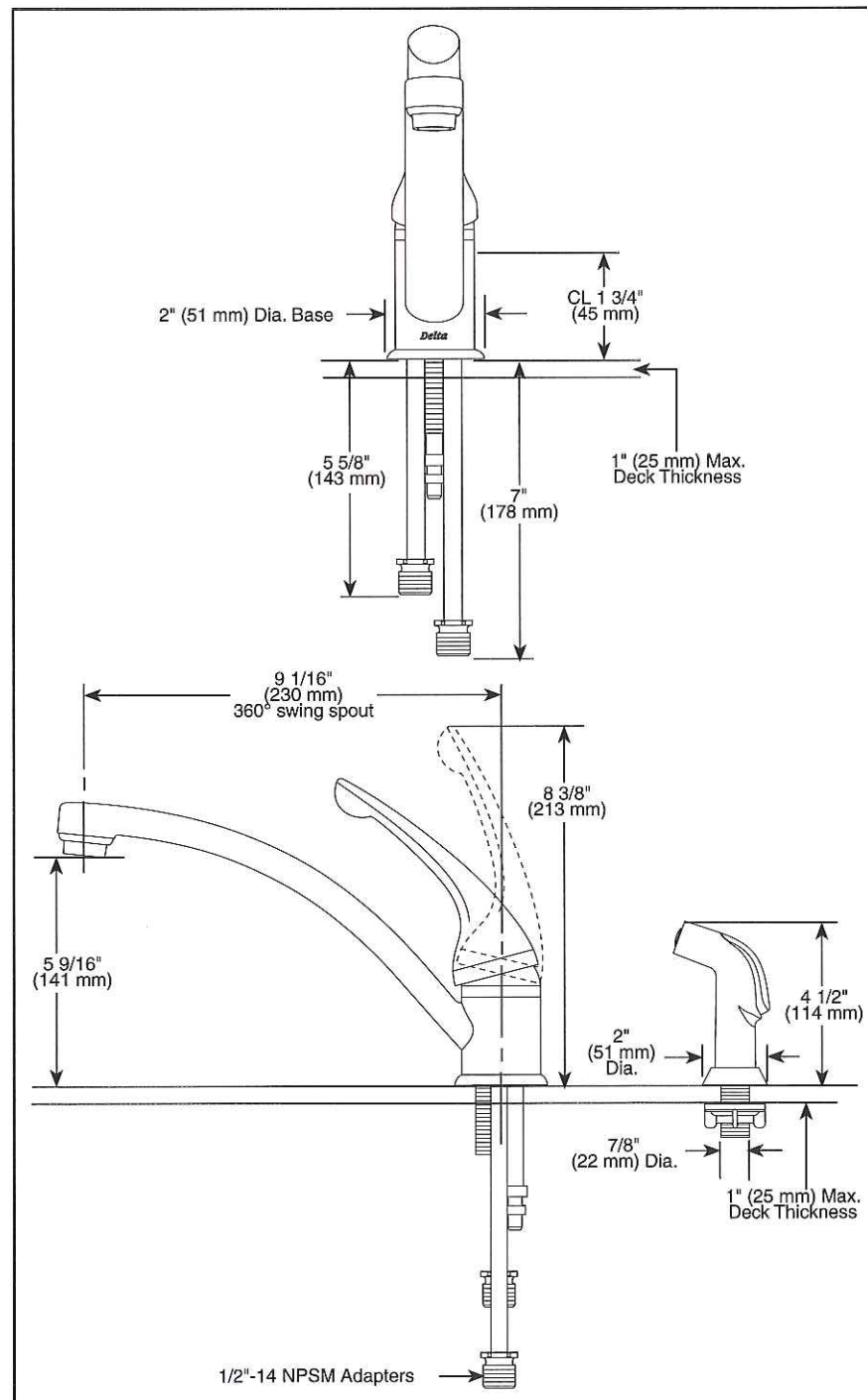


LOT 24 FC
KITCHEN



Submitted Model No.: _____

Specific Features: _____



Delta reserves the right (1) to make changes in specifications and materials, and (2) to change or discontinue models, both without notice or obligation. Dimensions are for reference only. See full-line price book for finish options and product availability.

DSP-K-141 Rev. E



KITCHEN FAUCETS

- Signature® Series
- Single Handle Deck Mount
- Single and 2 Hole Sink Applications
- Quick Snap® Vegetable Sprayer Hose Installation on Model 441 Series

STANDARD SPECIFICATIONS:

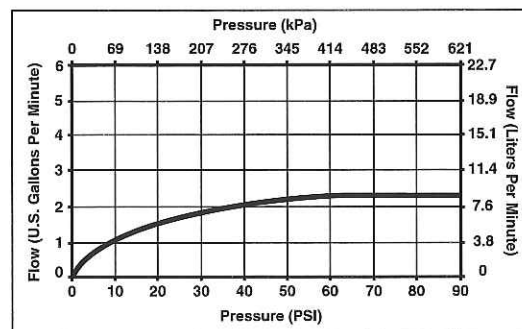
- Solid brass fabricated body.
- 9 1/16" (230 mm) long spout swings 360°.
- Lever handle shall return to neutral position when faucet is turned off.
- Red and blue button on handle.
- Control mechanism shall be of the rotating stainless steel ball type with replaceable non-metallic seats operating in stainless steel lined sockets.
- Model 441 series with spray attachment has anti-siphon device as integral part of valve body.
- Quick Snap® vegetable sprayer hose with matching finish sprayhead on model 441 series - 45" (1143 mm) long hose.
- 3/8" O.D. straight, staggered copper supply tubes - 5 5/8" (143 mm) and 7" (178 mm) long supplied with 1/2"-14 NPSM adapters.

WARRANTY

- Lifetime Faucet and Finish Limited Warranty to the original consumer purchaser to be free from defects in material and workmanship.
- 5 Year Limited Warranty for usage in all industrial, commercial and business applications.

COMPLIES WITH:

- ASME A112.18.1 / CSA B125.1
- Indicates ADA compliance to ICC/ANSI A117.1
- IAPMO Listed
- CSA Certified



Indianapolis, Indiana 46280
A Division of Masco Corporation of Indiana
© 2006 Masco Corporation of Indiana

EVOLUTION™ 2 ELONGATED TOILET

❑ 2427.012

- Vitreous china
- Low-consumption (6.0 Lpf/1.6 gpf)
- 305mm (12") rough-in
- Elongated siphon action bowl with direct-fed jet
- Fully glazed 2" Trapway
- Generous 9" x 8" water surface area
- Pilot Valve Water Control
- 2" Flapper flush valve
- Color-matched trip lever
- Sanitary bar on bowl
- 2 color matched bolt caps
- 100% factory flush tested
- 2 Year Limited Warranty on Total Toilet

☑ 3063.016 Elongated Bowl

❑ 3063.001 Elongated Universal Bowl

❑ 4061.016 Tank

Nominal Dimensions:

755 x 456 x 722mm
(29-3/4" x 18" x 28-3/8")

Fixture only, seat and supply by others

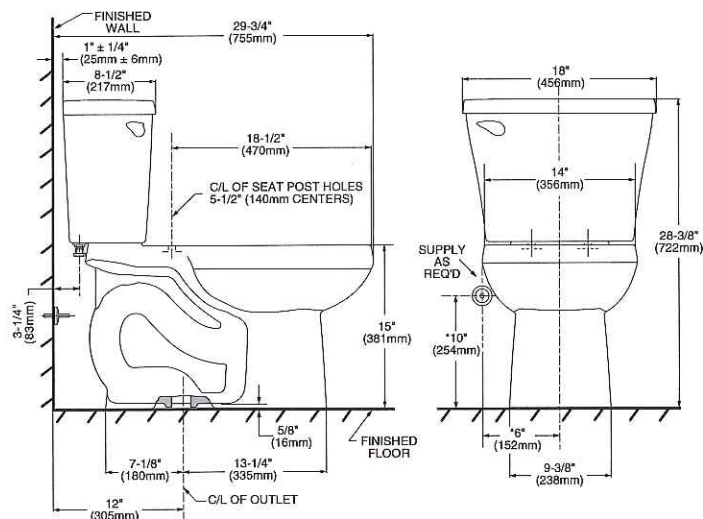
Alternate Tank Configurations Available:

- ❑ 4061.500 Tank complete with Aquagard liner
- ❑ 4061.800 Tank complete with tank lever located on right side

Compliance Certifications -

Meets or Exceeds the Following Specifications:

- ASME A112.19.2-2008/CSA B45.1-08 for Vitreous China Fixtures



To Be Specified:

- ❑ Color: ❑ White ❑ Bone ❑ Linen
- ❑ Seat: American Standard #5324.019 "Rise and Shine" solid plastic closed front seat with cover.
- ❑ Seat: American Standard #5311.012 "Laurel" molded closed front seat with cover.
- ❑ Seat: American Standard #5321.110 EverClean™ Elongated Seat with Cover and Slow Close Snap-Off hinges
- ❑ Alternate Seat:
- ❑ Supply with stop:

NOTES:

THIS COMBINATION IS DESIGNED TO ROUGH-IN AT A MINIMUM DIMENSION OF 305MM (12") FROM FINISHED WALL TO C/L OF OUTLET. * DIMENSION SHOWN FOR LOCATION OF SUPPLY IS SUGGESTED. SUPPLY NOT INCLUDED WITH FIXTURE AND MUST BE ORDERED SEPARATELY.

IMPORTANT: Dimensions of fixtures are nominal and may vary within the range of tolerance established by ANSI Standard A112.19.2. These measurements are subject to change or cancellation. No responsibility is assumed for use of superseded or voided pages.

LOT 24 FC
ENSUITE

MAAX SUBMITTAL SPECIFICATIONS

Reveal 71 Pivot Door 44 - 47 X 71 1/2 IN.

MODEL NUMBER 136671

DIMENSIONS: 47" x 71 1/2" Glass



Vivez l'expérience
MAAX[®]
Enjoy the experience

STANDARD FEATURES

- 71 1/2" high luxury clear glass panel 8mm (5/16") tempered glass with chrome hardware
- Unique MAAX Patent hinge - allows for 3" lateral adjustment
- Ideal for non-plumb walls 48" & 60" reversible door for left or right opening
- Acrylic and tile wall installation

OPTIONS

- None

UNIQUE FEATURES

- 3" Lateral Adjustment
- Reversible Header

SYSTEMS

- None

CERTIFICATIONS

Maax products adhere to one or more of the following certifications:



Project :
Contractor :
MAAX Representative : Tel :
Date :

www.maax.com

2012-10-19

MAAX SUBMITTAL SPECIFICATIONS

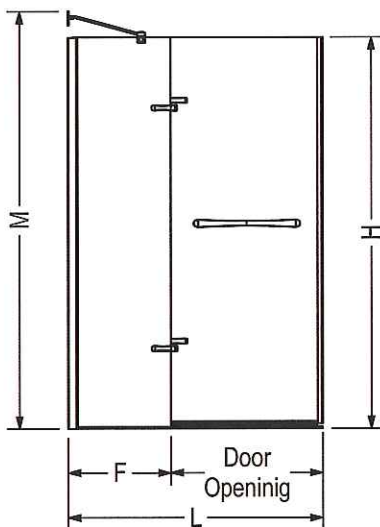
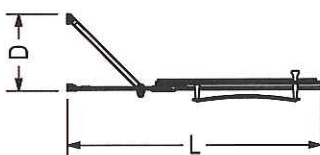
Vivez l'expérience
MAAX[®]
Enjoy the experience

Reveal 71 Pivot Door 44 - 47 X 71 1/2 IN.

MODEL NUMBER 136671

TECHNICAL DRAWINGS

STANDARD



Code	Description	H	M	L Adjustable	F	D Adjustable	Door Opening	Wall Adjustment
136671	Reveal 71 - 47"	71 1/2"	76 1/4"	44" - 47"	17 1/4"	9" - 15"	23" - 26"	3/4"
136672	Reveal 71 - 59"	71 1/2"	76 1/4"	56" - 59"	30"	9" - 15"	23" - 26"	3/4"

All dimensions are approximate. Structure measurements must be verified against the unit to ensure proper fit.