

# Kräus®

SPECIFICATION SHEET

## SINK SPECIFICATIONS

Model KFR1-33GWH

Fireclay 33 Inch Single Bowl

Farmhouse Kitchen Sink

### FEATURES

- Fireclay
- Apron Front Farmhouse
- Single Bowl Sink
- Reversible Traditional and Contemporary Designs
- Required Minimum Cabinet Size: 33"
- 3 1/2" Drain Opening

### ACCESSORIES INCLUDED

Kitchen Sink Grid: KBG-FC2914

### OPTIONAL ACCESSORIES SOLD SEPARATELY

Kitchen Sink Strainers: PST1, ST-2, ST-5

### CODES/STANDARDS:

cUPC

### KRAUS LIMITED LIFETIME WARRANTY

See website for details [www.kraususa.com](http://www.kraususa.com)

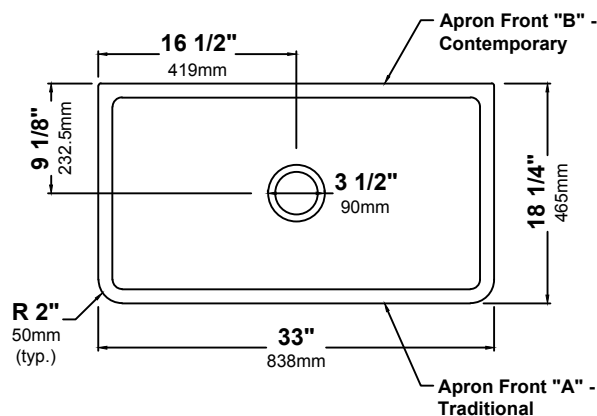
### AVAILABLE COLORS

Glossy White

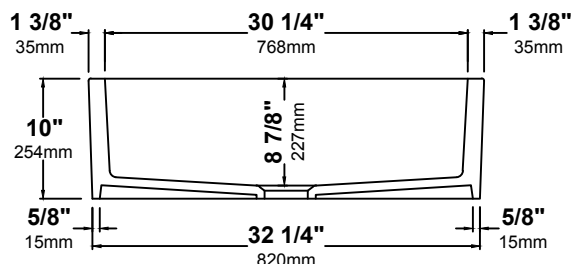


### NOMINAL DIMENSIONS

Sink Length	Sink Width	Sink Depth
33"	18 1/4"	10"



### TOP VIEW



### FRONT VIEW



# **Fireclay Farmhouse Kitchen Sink**

KFR1-33GWH

### **Prior to Installation:**

- Inspect the sink prior to installation to make sure the sink has not been damaged during shipping.
- Use the cut-out template provided by Kraus.
- Observe all plumbing and building codes according to your state requirements.
- Additional floor and wall preparation may be required to avoid damaging the sink.
- Make sure to purchase the correct cabinet for your farmhouse sink. Farmhouse base cabinets should be 3" larger than the actual size of the sink.
- Not recommended to be installed with laminate countertop.

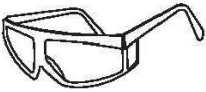


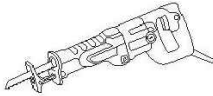
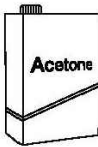



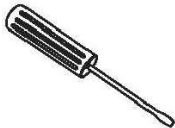
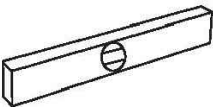
**For technical assistance or replacement parts, please contact Kraus**

**Customer Service and one of our representatives will be happy to help:**

Toll-Free: 800-775-0703 or [customerservice@kraususa.com](mailto:customerservice@kraususa.com)

The step-by-step guidelines in the installation instructions are a general reference for installing a Kraus Sink. Should there be any discrepancies, Kraus cannot be held liable. It is recommended to install all Kraus products by hiring a licensed professional.

## Tools you will need:

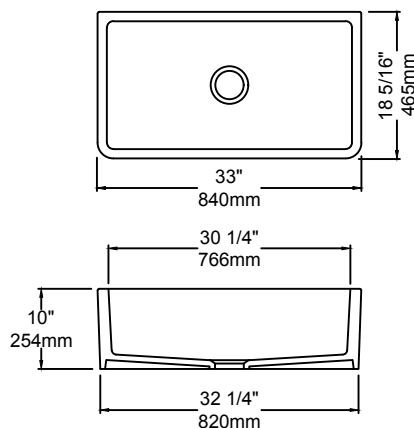
				
Safety Goggles	Drill	Silicone Adhesive	Jig Saw	Acetone
				
Phillips Screwdriver	Tape Measure	Pencil	Screwdriver	Level

**NOTE:** Specialized tools may be necessary to install Kraus Fireclay sinks with countertop materials other than wood, marble or granite.

## Parts List

- Cut-out Template
- Bottom Grid

## Dimensions



KFR1-33GWH  
33" x 18 5/16" x 10"

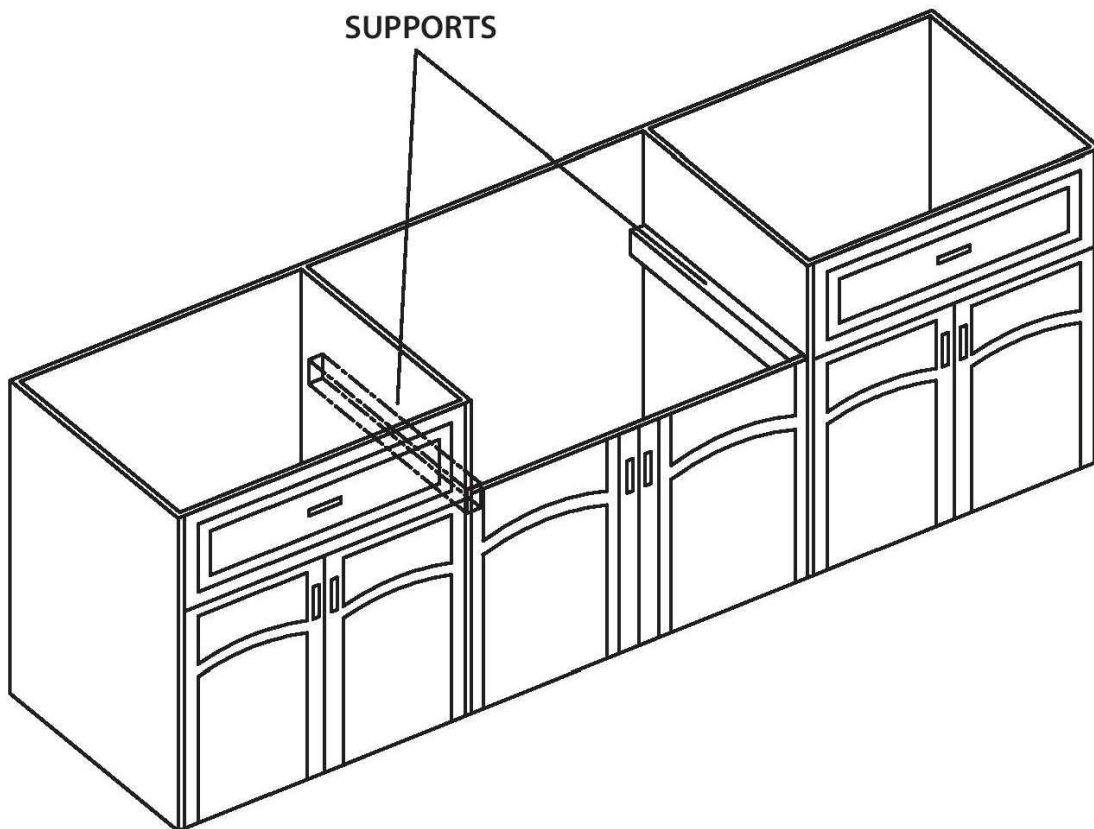
## 1. Measure & Build Supports

---

- Measure the actual height of apron
- Build supports on inside of cabinet based on sink measurements

**Installer Tip:** Support options

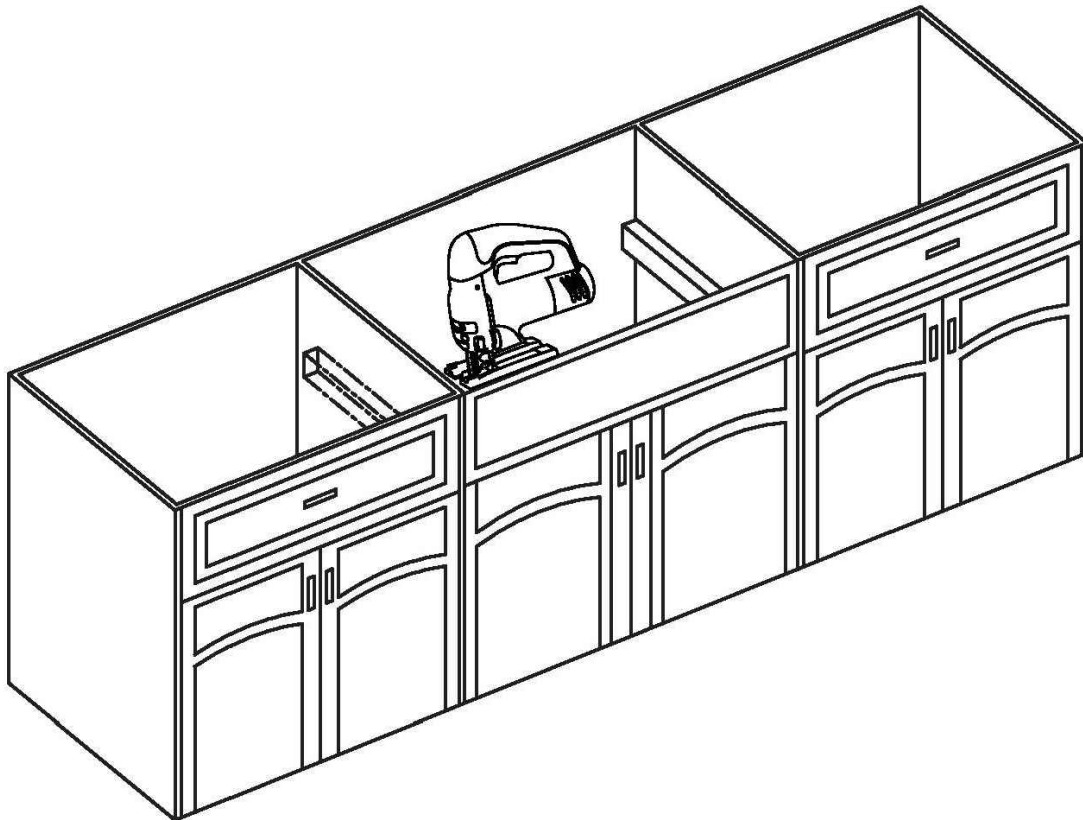
- 1 1/4" Angle Irons
- (2) 2" x 4'
- 3/4" Plywood



## 2. Cut Cabinet Front

---

- Measure height of apron front. Add  $\frac{1}{16}$ " to the dimension when you mark base cabinet front cutout. Use jigsaw to cut.

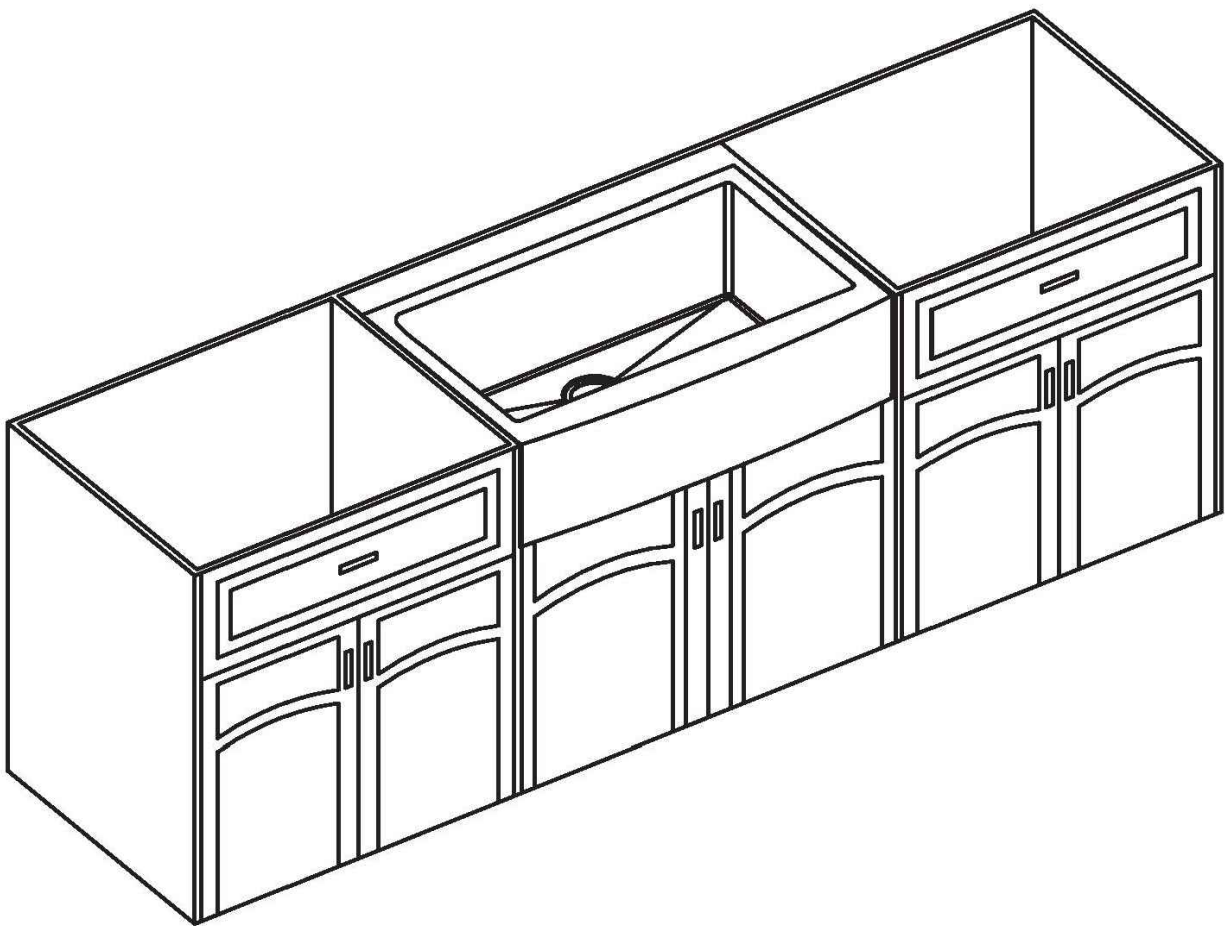


### 3. Install Sink

---

- Place sink in opening. The weight of sink should be sustained by the built supports.
- Make sure sink is leveled from front to back and side to side
- Uses silicone to fill in gaps where necessary

**NOTE:** This sink is reversible. Pick which apron you'd like facing forward before installing.

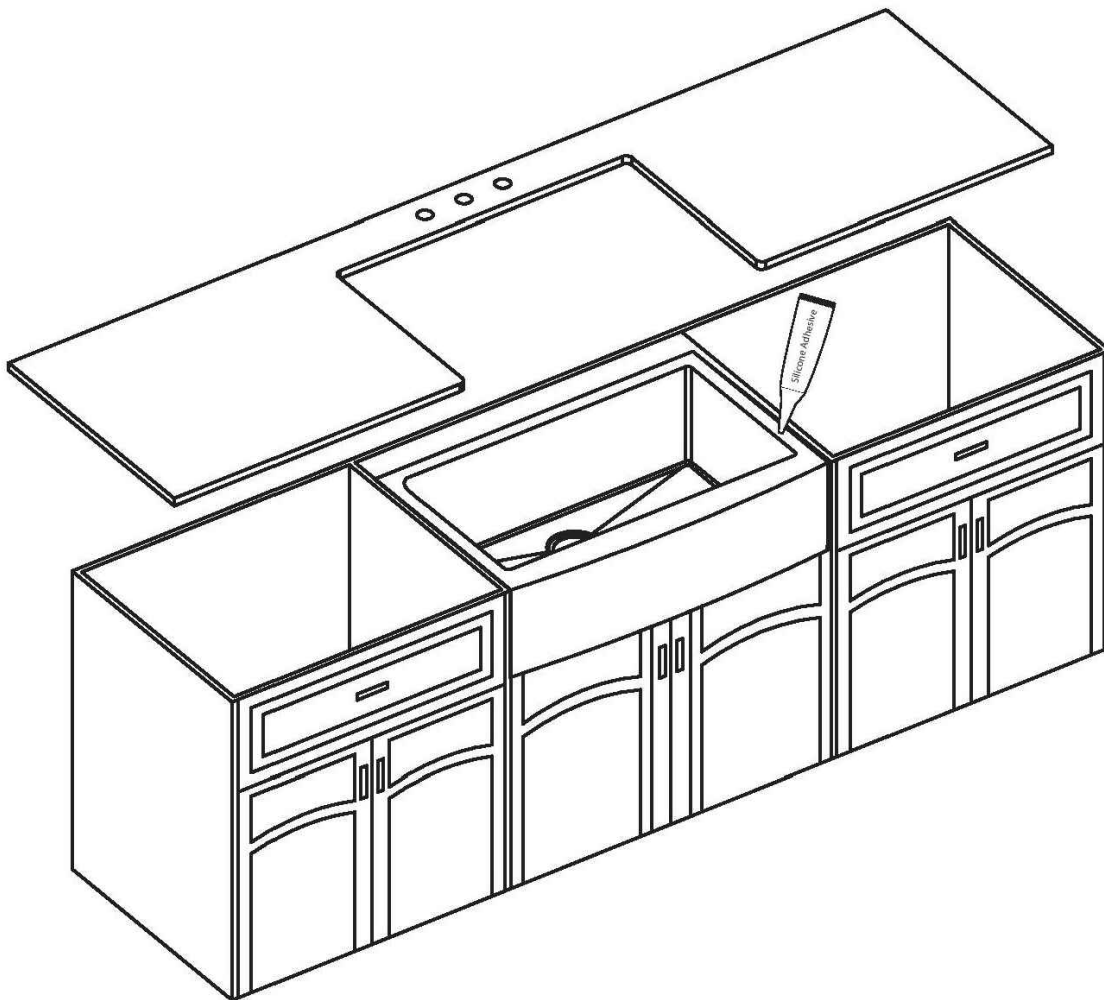


## 4. Cut Countertop

---

- Use a bead of silicone (or preferred adhesive) around the rim of the sink. Check the alignment of the sink to the cutout in the countertop. Place countertop cutout hole over sink and press firmly.

**Installer Tip:** Use acetone or denatured alcohol to remove any excess sealant.

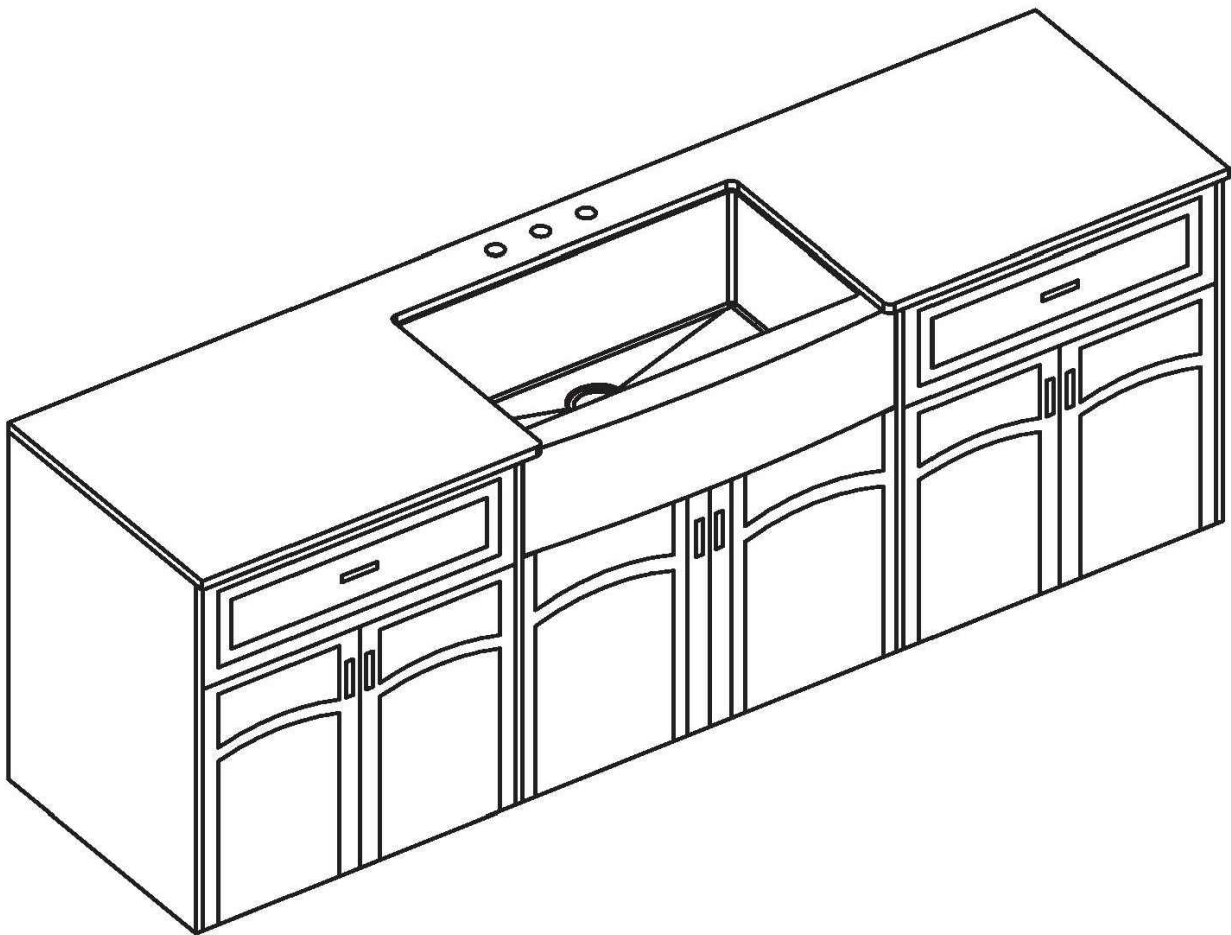




## 5. Installing Plumbing Fixtures

---

- Connect drain, trap to drain and water supply connections to the faucet according to manufacturer's instruction.
- Run water into sink and check for leaks.



# VIGO

LOT 5-58, PH5, BATH (ALL) SINK SPECS

17 1/8"  
[435 mm]

13 1/8"  
[333 mm]

4 3/4"  
[121 mm]



# Specifications

LOT 5-58, PH5, BATH (ALL) SINK SPECS

## Dimensions

Assembled Depth (in inches)	22	Assembled Height (in inches)	9
Assembled Weight (in lbs)	15	Assembled Width (in inches)	15
Packaged Depth (in inches)	22	Packaged Height (in inches)	9
Packaged Weight (In lbs)	15	Packaged Width (in inches)	15

## Details

Basin Depth (in.)	13.125	Basin Length (in.)	13.125
Basin Width (in.)	17.125	Colour Family	White
Compatible Faucet Type	No Faucet Holes	Country of Origin	CN-China
Faucet Included	No	Faucet Installation Type	None
Features	Antimicrobial, ADA Compliant, Easy to Install, Anti-microbial, Low Lead, Rust-resistant, Commercial Use, ADA-Compliant	Included	Sink

## LOT 5-58, PH5, BATH (ALL) SINK SPECS