



LOT 5-71, INNISFIL

Purchaser's Initial: EK MK

LOT 5-71, INNISFIL



Samsung Stainless Steel Air Fry Kitchen Package

Package Includes (3):

- 1 x 36-inch W 22.8 cu. ft. French Door Refrigerator in Stainless Steel, Counter Depth
- 1 x 6.3 cu.ft. Single Oven Slide-In Electric Range with Self-Cleaning True Convection Oven and Air Fry in Stainless...
- 1 x 24-inch Top Control Dishwasher with 3rd Rack, Stainless Steel Tub, 39 dBA in Stainless Steel

Price Before Savings \$7,085.00

Package Savings \$300.00

Package Price \$6,785.00

APPLIANCE DELIVERY

Enter your postal code for availability and earliest delivery date:

A1A 1A1

Add To Cart

Price and availability may vary by store, and between online and in-store. [Click here for details.](#)



Package Details:



Samsung 36-inch W 22.8 cu. ft. French Door Refrigerator in Stainless Steel, Counter Depth

★★★★☆ (14) Model #RF23A9771SR | Store SKU # 1001618172

\$3,995.00

Qty 1

Feedback

|                                   |       |                           |                         |
|-----------------------------------|-------|---------------------------|-------------------------|
| Refrigerator Width (in.)          | 36    | Capacity (cu. ft.)        | 22.5                    |
| Height to Top of Door Hinge (In.) | 71.88 | Counter or Standard Depth | Standard Depth          |
| Depth Including Door (In.)        | 28.5  | Ice/Water Dispenser       | Water and Ice Dispenser |

LOT 5-71, INNISFIL



**Samsung 6.3 cu.ft. Single Oven Slide-In Electric Range with Self-Cleaning True Convection Oven and Air Fry in Stainless Steel**

**\$1,895.00**

Qty

1

★★★★☆ (304) Model #NE63T8711SS | Store SKU # 1001551503

|                  |          |                         |               |
|------------------|----------|-------------------------|---------------|
| Range Size (in.) | 30       | Oven Capacity (cu. ft.) | 6.3           |
| Fuel Type        | Electric | Number of Main Burners  | 5             |
| Range Style      | Slide-In | Cleaning Type           | Self Cleaning |



**Samsung 24-inch Top Control Dishwasher with 3rd Rack, Stainless Steel Tub, 39 dBA in Stainless Steel**

**\$1,195.00**

Qty

1

★★★★☆ (1344) Model #DW80R9950US | Store SKU # 1001296346

|                    |                 |                     |       |
|--------------------|-----------------|---------------------|-------|
| Cutout Width (In.) | 24              | Cutout Height (In.) | 34.13 |
| Sound Rating (dB)  | 39              | Cutout Depth (In.)  | 24    |
| Tub Material       | Stainless Steel |                     |       |



Purchaser's Initial: Ek Mk  
Ek Mk



LOT 5-71, INNISFIL

My Store: **Dufferin** Closed • Opens 6 a.m. ▾

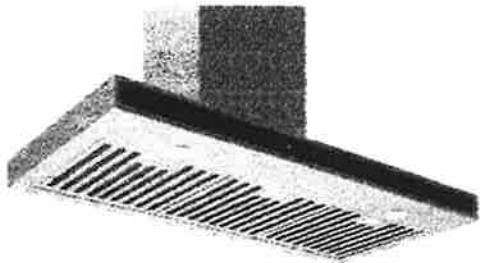
Rental Credit Services For the Pro  
Order Status Customer Support  
Gift Cards Français

🔍

👤 Account / Sign In ▾ 🛒 Cart

Shop by Department ▾ Shop by Room Ideas & How-to Home Services  
Warehouse Value & Specials Weekly Flyer

3-Hour Express Delivery Starting at \$9.97\* [Learn More](#)



**Ancona WRC636 36<sup>30</sup>-inch Wall-Mounted Rectangular Range Hood in Stainless Steel with Night Light Feature**

Model # AN-1510 | Store SKU # 1001414571

★★★★ (8) [Write a Review](#) [Q&A \(1\)](#)

**\$679.99** / each

OR

**As low as \$113.34 / month\*** for 6 months with our consumer credit card.

Advertisement not available in Quebec.

[Details](#) ⓘ [Apply Now](#) ↗



Purchaser's Initial: EK  
Ek

MK  
MK

Choose Your Options

Colour/Finish: **Stainless Steel**



Range Hood Width: 36 in.



! Not Sold In-Store



LOT 5-71, INNISFIL

Want it Installed?

☐ Connect me to Local Pros  
Local Pros are available near **M3J 3N2**  
What are Local Pros?

Purchaser's Initial: EK  
EK

MK  
MK

Qty 1

Add To Cart

Delivery options for **M3J 3N2**

**STANDARD SHIPPING**

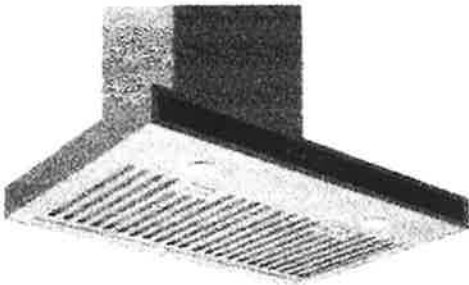
Estimated Arrival **May 13-15**  
**FREE**

Price and availability may vary by store, and between online and in-store. [Click here for details.](#)

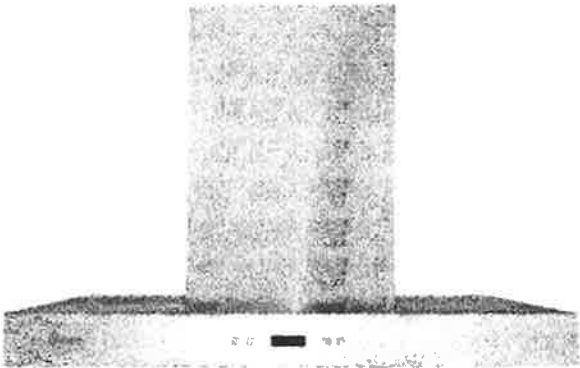


Feedback

Customers Who Viewed this Item Bought



**Ancona** WRC630 30-inch Wall-Mounted Rectangular Range Hood in Stainless Steel with Night Light Feature



**Turin** Bellissimo Wall Mounted Range Hood 36 inch 900 CFM



★★★★★ (8)  
\$629.99 / each

LOT 5-71, INNISFIL

(0)  
\$1,082.00 / each

Add to Cart

Add to Cart



Overview

Model # AN-1510 Store SKU # 1001414571

The modern and sophisticated Ancona WRC630 and WRC636 range hood will definitely transform your kitchen. With its powerful 650 CFM, this range hood is made out of 430 stainless steel and comes with the easy to clean dishwasher safe baffle filters. It is fully equipped with bright eco-friendly LED lights with multiple settings that will brighten your cooking surface while cooking. In addition to the Ancona Ultra Quiet Technology, it also features our latest exclusive Night Light function which will automatically turn on and adjust to ambient light room setting. This stylish range hood is the perfect appliance for any kitchen style, combining performance and innovation.

- High grade 430 stainless steel. Baffle filters Dishwasher safe, Easy to clean.
- Ancona Ultra Quiet Technology (first speed below 40 dBA). cULus approved.
- Night Light Function Automatically turns on when room gets dark
- 650 CFM - Independently tested. Top venting application (Round 6 in.). Can be converted to an internal recirculation unit with purchase of a conversion filter kit, purchased separately.
- 5-speed touch control panel with LED including time-delay auto shut-off.
- 2 x 2.5-Watt LED lights with multiple settings - Designed by Ancona, powerful, bright and eco-friendly, known to last up to 10 times longer than conventional lights

Manual

- [1001414571\\_instruction.pdf](#)
- [1001414571\\_specification.pdf](#)
- [1001414571\\_user&care.pdf](#)
- [1001414571\\_warranty.pdf](#)

The Home Depot will provide an accessible format of PDFs upon request. Please contact us at 1-800-628-0525.



Purchaser's Initial: Ek  
Ek

Mk  
MK

Specifications

Vent  
Installation  
Type  
Ducted

Range  
Hood  
Width  
36 in.

30"

Cubic  
Feet/Minute  
(CFM)

Fan  
Speeds



LOT 5-71, INNISFIL

650 5

CFM

Purchaser's Initial: Ek Mk  
Ek Mk

Noise  
Level  
(Sones)

2

Range  
Hood  
Features

Delay  
Shut-  
Off,  
Removable  
Filter,  
Dishwasher  
Safe,  
Removable  
Grease  
Filter



Dimensions

|                                   |       |                                    |      |
|-----------------------------------|-------|------------------------------------|------|
| Assembled<br>Depth (in<br>inches) | 19.6  | Assembled<br>Height (in<br>inches) | 2.3  |
| Assembled<br>Weight (in lbs)      | 37.48 | Assembled<br>Width (in<br>inches)  | 35.4 |
| Packaged<br>Depth (in<br>inches)  | 40    | Packaged<br>Height (in<br>inches)  | 23.6 |
| Packaged<br>Weight (In lbs)       | 48.94 | Packaged<br>Width (in<br>inches)   | 18.5 |



LOT 5-71, INNISFIL

Details

|                                     |                    |                                          |                 |
|-------------------------------------|--------------------|------------------------------------------|-----------------|
|                                     |                    | Purchaser's Initial: <u>Ek</u> <u>Mk</u> |                 |
| ADA Compliant                       | Not ADA Compliant  | Amperage (amps)                          | 3.4             |
| Appliance Series                    | WRC636             | Appliance Type                           | Range Hood      |
| Bulb Included                       | Bulb Included      | Bulb Type Required                       | LED             |
| Certifications and Listings         | UL Listed          | Colour Family                            | Stainless Steel |
| Control Type                        | Touch pad          | Country of Origin                        | CN-China        |
| Cubic Feet/Minute (CFM)             | 650 CFM            | Duct Shape                               | Rectangular     |
| Exhaust Vent Location               | Top                | Fan Speeds                               | 5               |
| Features - Approved for Outdoor Use | No                 | Features - Charcoal Filter               | No              |
| Features - Dishwasher Safe Filters  | ✓                  | Features - Integrated Lights             | No              |
| Features - Removable Filter         | ✓                  | Found Duct Diameter                      | 6               |
| Labour                              | 1 Year             | Max Bulb Wattage                         | 2.5             |
| Minimum Air Flow Capacity CFM       | 650 CFM            | Mounting Type                            | Wall-Mounted    |
| Noise Level                         | Moderate (Medium)  | Noise Level (Sones)                      | 2               |
| NSF® Certified                      | NSF® Not Certified | Number of Filters                        | 5               |



LOT 5-71, INNISFIL

Purchaser's Initial: Ek  
Ek

Mk  
MK

|                  |                   |                                        |                                                                            |
|------------------|-------------------|----------------------------------------|----------------------------------------------------------------------------|
| Number of Lights | 2                 | Operating Sound Level (dBA)            | 40                                                                         |
| Parts            | 1 Year            | Range Hood Features                    | Delay Shut-Off, Removable Filter, Dishwasher Safe, Removable Grease Filter |
|                  | 30"               |                                        |                                                                            |
| Range Hood Width | <del>36 in.</del> | Required Clearance above Cooktop (In.) | 24                                                                         |
| Room Type        | Kitchen           | Smart Technology                       | No                                                                         |
| Swatch Colour    | Stainless Steel   | The Home Depot Exclusive               | No                                                                         |
| Usage            | Indoor            | Vent Installation Type                 | Ducted                                                                     |
| Vent Type        | External          | Voltage (volts)                        | 120                                                                        |
| Wattage          | 405               | Works with (Smart Home)                | No, No Smart Technology                                                    |



Warranty / Certifications

1 Year Limited Warranty

Customer Reviews





# NE63T8711SS

LOT 5-71, INNISFIL

SAMSUNG

6.3 cu. ft. Slide-In Electric Range

Purchaser's Initial: Ek Mk  
Ek Mk



### Signature Features

#### Intelligent User Experience

- Simplified control panel remembers your cooking habits while offering intuitive messaging on an LCD with one knob and minimum buttons.

#### Air Fry

- The ideal way to cook healthier fried food as it eliminates excess fat, but everything is still crispy and brown outside and juicy inside.

#### True Convection

- A heated fan distributes heat all around the oven and keeps the temperature constant so dishes are cooked quickly and thoroughly.



#### Wi-Fi Connectivity

- Monitor and control the oven using the SmartThings App<sup>1</sup>. And control the oven with your voice using a voice assistant<sup>2</sup>, such as Samsung Bixby<sup>3</sup>, Amazon Alexa or Google Assistant.

#### Fingerprint Resistant Finish

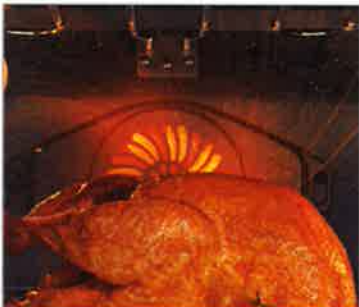
- Prevents surfaces from being covered in unsightly fingerprints or marks and smudges.

### Available Colours

-  Fingerprint Resistant Stainless Steel (shown)
-  Fingerprint Resistant Black Stainless Steel



Air Fry



True Convection

### Features

- Intelligent User Experience
- Air Fry with included Air Fry Rack
- True Convection
- Bread Proof 95°F (35°C)
- Wi-Fi Connectivity
- Voice Control
- Fingerprint Resistant Finish
- Slide-In Design
- Flexible Cooktop – 5 Electric Elements
- Large Oven Capacity: 6.3 cu. ft.
- Storage Drawer
- Hidden Bake Element

### Convenience

- Self & Steam Clean
- Illuminated Knobs
- Auto Oven Light
- Proofing
- Kitchen Timer
- Delay Start
- Auto Shut-Off Option
- Child Safety Lock
- Easy Preset Cook Options
- Sabbath Mode
- Temperature Probe

<sup>1</sup>Available on Android and iOS devices. A Wi-Fi connection and a Samsung account are required.

<sup>2</sup>A Wi-Fi connection is required.

<sup>3</sup>Bixby is Samsung's brand of artificial intelligence (AI) / Internet of Things (IoT) voice assistant. A Samsung account is required.

# NE63T8711SS

LOT 5-71, INNISFIL

SAMSUNG

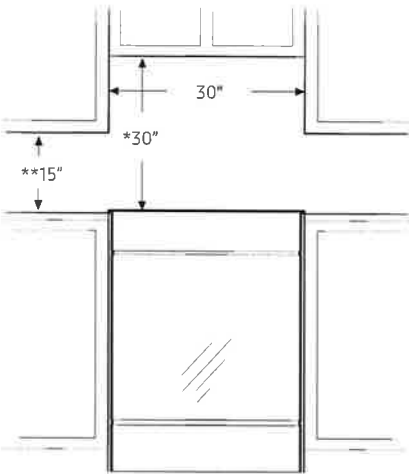
## 6.3 cu. ft. Slide-In Electric Range

Purchaser's Initial: Ek  
Ek

Mk  
MK

### Installation Specifications

**IMPORTANT:** To eliminate the risk of burns or fire caused by reaching over heated surface units, avoid having cabinet storage space located above the surface units. If you have cabinet storage space over the heating elements, you can reduce the risk by installing a range hood that projects horizontally a minimum of 5 inches beyond the bottom of the cabinets.



\* A minimum of 30" is required between the top of the cooking surface and the bottom of an unprotected wood or metal cabinet; a minimum of 24" is required if the bottom of the wood or metal cabinet is protected by not less than 1/4" of flame retardant millboard covered with not less than no.28 MSG of sheet steel, 0.015" of stainless steel, 0.024" of aluminum, or 0.020" of copper.

\*\* A minimum of 15" is required between the countertop and the adjacent cabinet bottom.

### Power Source

240V/60Hz/40A

### Electric Ceramic Cooktop

- Right Front: 6"/9"/12", 3000W
- Left Front: 6"/9", 3600W
- Right Rear: 6", 1200W
- Left Rear: 6", 1200W
- Warm Center: 7", 100W

### Oven

- Hidden Bake Element: 3000W
- Bake: 175°F - 550°F
- Convection Bake: 175°F - 550°F
- Convection Roast: 175°F - 550°F
- Broil: (Low – High)
- Convection Element/Heater: 1250W
- Proofing
- Sabbath Mode

### Storage Drawer

- Capacity: 1.0 cu. ft.

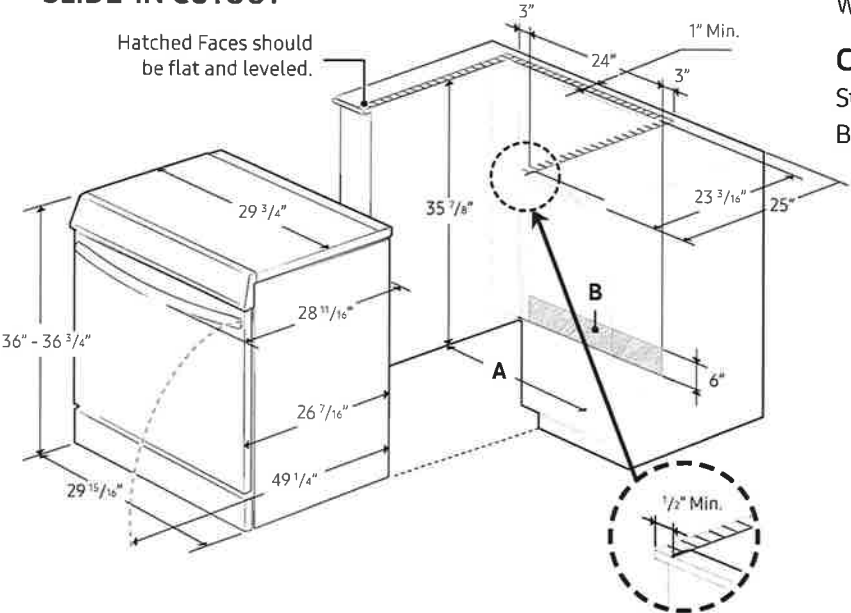
### Warranty

One (1) Year Parts and Labour

### Dimensions

**CAUTION:** This range has been designed to comply with the maximum allowable wood cabinet temperatures of 194 °F. Make sure the wall covering, countertops, and cabinets around the range can withstand the heat (up to 194 °F) generated by the range. If not, discolouration, delamination, or melting may occur.

### SLIDE-IN CUTOUT



### Product Dimensions & Weight (WxHxD)

Outside Dimensions:

29<sup>15</sup>/<sub>16</sub>" x 36"-36<sup>3</sup>/<sub>4</sub>" x 28<sup>11</sup>/<sub>16</sub>"

Weight: 174.8 lbs (79.3 Kg)

### Shipping Dimensions & Weight (WxHxD)

Dimensions: 33<sup>1</sup>/<sub>16</sub>" x 41<sup>3</sup>/<sub>4</sub>" x 30<sup>5</sup>/<sub>16</sub>"

Weight: 201.3 lbs (91.3 Kg)

### Colour

Stainless Steel

Black Stainless Steel

### Model #

NE63T8711SS

NE63T8711SG

### UPC Code

887276414997

887276414980

Actual colour may vary. Design, specifications and colour availability are subject to change without notice. Non-metric weights and measurements are approximate.  
© 2020 Samsung Electronics Canada Inc. All rights reserved. Samsung is a registered trademark of Samsung Electronics Co., Ltd., used with permission.

# Electric Range

## Installation manual

### Anti-tip device

**⚠ WARNING**

To reduce the risk of tipping the appliance, the appliance must be secured by properly installed anti-tip devices packed with the appliance.



- A. A child or adult can tip the range and be killed.
- B. Install the anti-tip device to the structure and/or the range at rear right (or rear left) of the range bottom.
- C. Engage the range to the anti-tip device by leveling leg at rear right (or rear left) of the range bottom.
- D. Re-engage the anti-tip device if the range is moved.
- E. See installation instructions for details.
- F. Failure to do so can result in death or serious burns to children or adults.

### About this manual

**READ THESE INSTRUCTIONS COMPLETELY AND CAREFULLY.**

**Important note to the installer**

- Read all instructions contained in these installation instructions before installing the range.
- Remove all packing materials from the oven compartments before connecting the electrical supply to the range.
- Observe all governing codes and ordinances.
- Save for the local electrical inspector's use.
- Be sure to leave these instructions with the consumer.

**Important note to the consumer**

**Keep these instructions for the local electrical inspector's use.**

- As when using any appliance generating heat, there are certain safety precautions you should follow.
- Be sure your range is installed and grounded properly by a qualified installer or service technician.
- For the range to ventilate properly, make sure the range's vents are not blocked or covered, and that there is enough clearance at the top, back, sides, and underneath the range. The vents allow the necessary exhaust for the range to operate properly with correct combustion and get the good cooking result.
- Make sure the wall coverings around the range can withstand the heat generated by the range.
- To eliminate the need to reach over the surface elements, avoid having cabinet storage space above the cooktop.
- The range should not be placed on a base.

### For your safety

**⚠ WARNING**

- If the information in this manual is not followed exactly, a fire or electrical shock may result causing property damage, personal injury, or death.
- Before beginning the installation, switch the power off at the service panel and lock the service disconnecting switch to prevent power from being switched on accidentally. When the service disconnecting switch cannot be locked, securely fasten a prominent warning device, such as a tag, to the service panel.
- This appliance must be properly grounded.

**SAMSUNG**



DG68-01303A-01

Purchaser's Initial: EK MK  
EK MK

## Prepare tools & Parts

Drill      Adjustable Wrench      Pliers      1/4" Nut Driver      Phillips Screwdriver      Flat Screwdriver      Pencil      Level

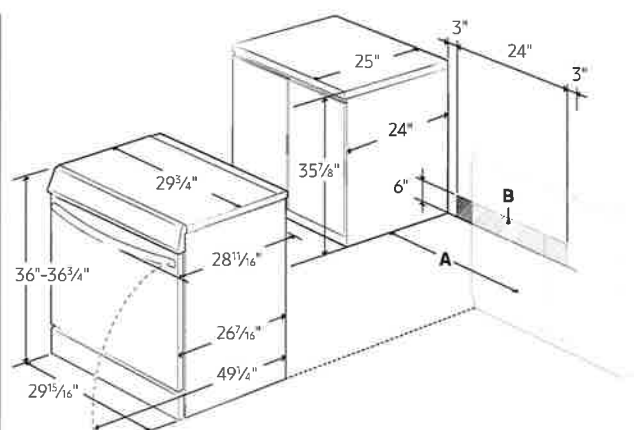
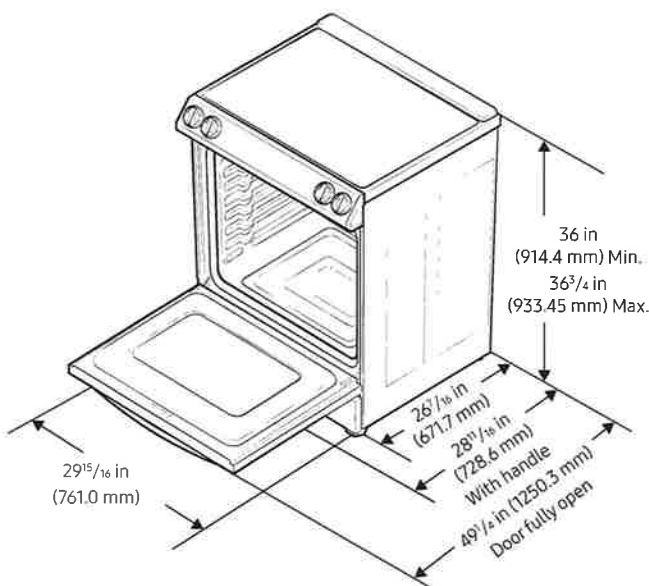
Anti-tip Bracket Template      Anti-Tip Bracket      Screws (short:2 ea, long:2 ea)      Filler Kit

4-Wire Cord or 3-Wire Cord  
(UL Approved 40 or 50 AMP)

Strain Relief  
(For Conduit Installation Only)

To install the range, refer to the following figure.

This range has been designed to comply with the maximum allowable wood cabinet temperatures of 194 °F. Make sure the wall covering, countertops, and cabinets around the range can withstand the heat (up to 194 °F) generated by the range. If not, discoloration, delamination, or melting may occur.



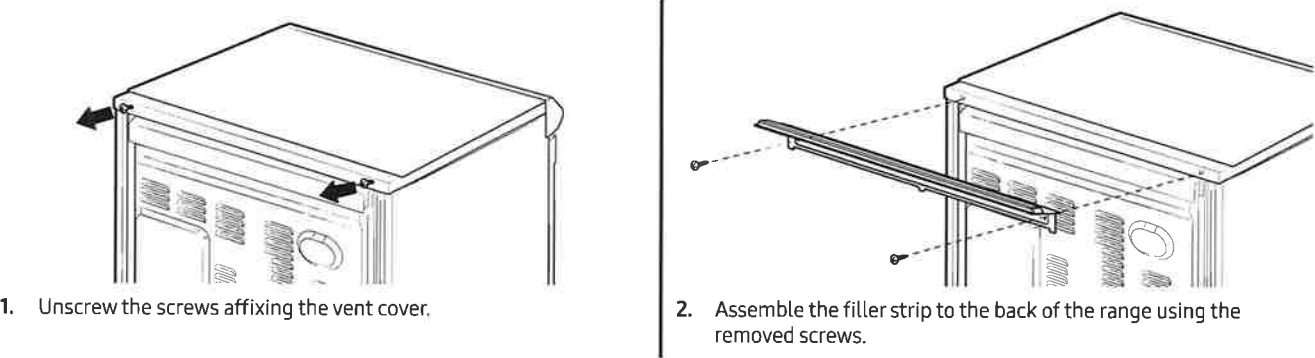
**IMPORTANT:** If your cabinets are over 36¾" high, you must install this range on a hard, heat resistant support that raises the surface of the range so that it is about even with the countertop.

You must use the rear filler kit to install the range in a freestanding cutout cabinet. For more information, see “Optional rear filler kit” as shown below.

If you install the product in a kitchen island, you must maintain minimum 2½" from cutout to back edge of the countertop and minimum 3" from cutout to side edges of the countertop.

Optional rear filler kit

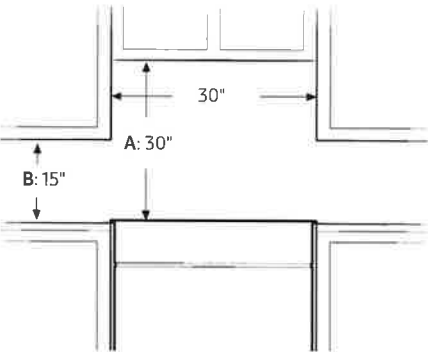
Used to fill gap between the range back and wall. Adds a filler strip to the rear of the range. This kit can only be used when the opening in the countertop is 25" deep.



NOTE

If the countertop depth is greater than 25", there will be a gap between the filler kit and the back wall.

Minimum dimensions



**IMPORTANT:** To eliminate the risk of burns or fire caused by reaching over heated surface units, avoid having cabinet storage space located above the surface units. If you have cabinet storage space over the heating elements, you can reduce the risk by installing a range hood that projects horizontally a minimum of 5 inches beyond the bottom of the cabinets.

- A. A minimum of 30" is required between the top of the cooking surface and the bottom of an unprotected wood or metal cabinet; a minimum of 24" is required if the bottom of the wood or metal cabinet is protected by not less than 1/4" of flame retardant millboard covered with not less than no.28 MSG of sheet steel, 0.015" of stainless steel, 0.024" of aluminum, or 0.020" of copper.
- B. A minimum of 15" is required between the countertop and the adjacent cabinet bottom.

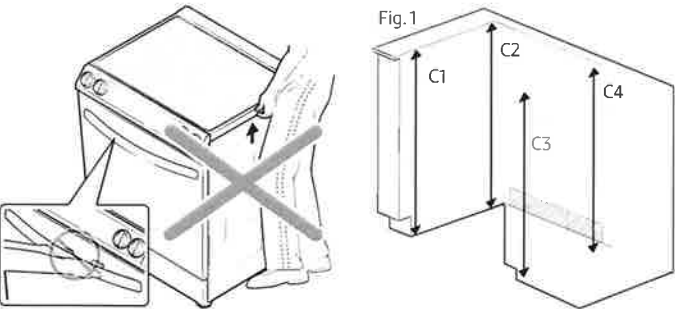
CAUTION

Vapors may come out from the vent. It is normal, but be careful as it may be hot. Depending on the material of your wall, hot vapors may leave stains on it.

To avoid breakage

CAUTION

Do NOT lift or handle the unit by the cooktop glass or door handle.



1. The counter top around the cut-out should be flat and leveled.
2. Before installing the unit, measure the heights of the two cabinet sides (C1-C4), front and back (See Fig. 1) from the floor to the top of the counter.
3. Level the range using the four leveling legs so that the height from the floor to the underside of the cooktop glass frame is greater than the tallest cabinet measurement by at least 1/8".
4. Slide the unit into the cabinet (**DO NOT PUSH THE UNIT HARD**). Make sure the center of the unit aligns with the center of the cabinet cut-out.

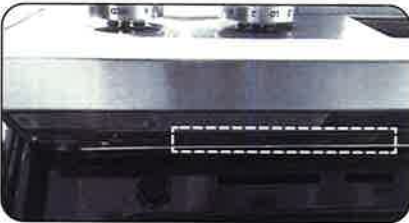
# Connecting the power

Purchaser's Initial: Ek Mk  
Ek Mk

## Step 1. Meeting electrical connection requirements

**⚠ CAUTION**

For personal safety, do not use an extension cord with this appliance. Remove the house fuse or open the circuit breaker before beginning installation.



This appliance must be supplied with the proper voltage and frequency, and be connected to an individual, properly grounded branch circuit, protected by a circuit breaker or fuse having amperage as specified on the rating plate. The rating plate is located on the bottom side of the control panel.

We recommend you have the electrical wiring and hookup of your range connected by a qualified electrician. After installation, have the electrician show you where your main range disconnect is located.

Check with your local utilities for electrical codes which apply in your area. Failure to wire your oven according to governing codes could result in a hazardous condition. If there are no local codes, your range must be wired and fused to meet the requirements of the National Electrical Code, ANSI/NFPA No. 70–Latest Edition. You can get a copy by writing:

National Fire Protection Association  
Batterymarch Park  
Quincy, MA 02269

Effective January 1, 1996, the National Electrical Code requires that new construction (not existing) utilize a 4-conductor connection to an electric range.

When installing an electric range in new construction, follow Steps 2 and 3 for a 4-wire connection.

You must use a 3-wire or 4-wire, single-phase A.C. 208Y/120 Volt or 240/120 Volt, 60 hertz electrical system.

If the electrical service provided does not meet the above specifications, have a licensed electrician install an approved outlet.

Use only a 3-conductor or a 4-conductor UL-listed range cord. These cords may be provided with ring terminals on the wire and a strain relief device.

A range cord rated at 40 amps with 125/250 minimum volt range is required. A 50 amp range cord is not recommended but if used, it should be marked for use with nominal 1 3/8" diameter connection openings. Care should be taken to center the cable and strain relief within the knockout hole to keep the edge from damaging the cable.

- Because range terminals are not accessible after the range is in position, a flexible service conduit or cord must be used.

**📄 NOTE**

If the power connection is plugged in improperly, the following message appears on the display.

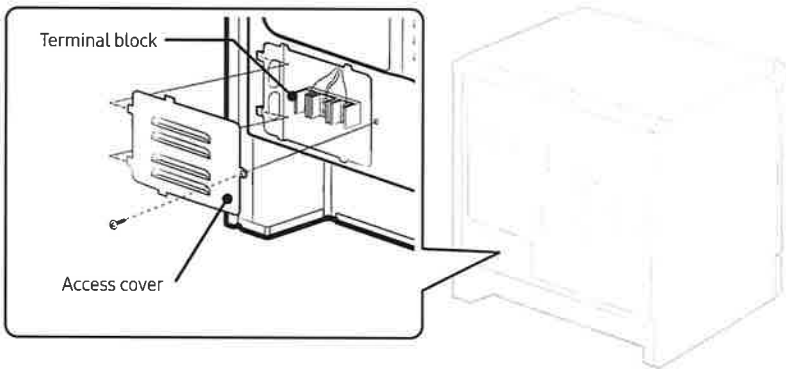
- LCD, PMOLED : Wire installation fail
- LED : bAd LinE

Reconnect the power connection properly, and the message disappears.



ALL NEW BRANCH-CIRCUIT CONSTRUCTIONS, MOBILE HOMES, RECREATIONAL VEHICLES, AND INSTALLATIONS WHERE LOCAL CODES DO NOT ALLOW GROUNDING THROUGH NEUTRAL, REQUIRE A 4-CONDUCTOR UL-LISTED RANGE CORD.

Step 2. Accessing the power cord connection



Loosen and then remove the rear access cover screw with a screwdriver. Remove the rear access cover by pull right and then out. The terminal block will then be accessible.

Specified rating of power-supply-cord kit and circuit protection

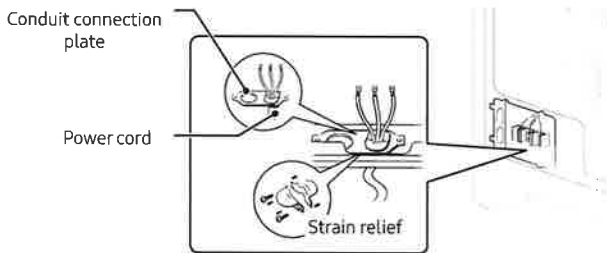
| Range rating, watts  |                      | Specified rating of power-supply-cord kit and circuit protection, Amps | Diameter (inches) of range connection opening |         |
|----------------------|----------------------|------------------------------------------------------------------------|-----------------------------------------------|---------|
| 120/240 volts 3-wire | 120/208 volts 3-wire |                                                                        | Power cord                                    | Conduit |
| 8750-16500           | 7801-12500           | 40 or 50 A                                                             | 1 3⁄8"                                        | 1 1⁄8"  |

This appliance must be supplied with the proper voltage at the proper frequency and must be connected to a dedicated, properly grounded branch circuit protected by a 40 amp or larger circuit breaker.

NOTE

- For power cord installations, go to Step 3 on page 4.
- For conduit installations, go to Step 4 on page 5.

Step 3. Installing the power cord



For power cord installations, hook the strain relief over the power cord hole (1 3⁄8") located below the rear of the drawer body. Insert the power cord through the strain relief and tighten the device.

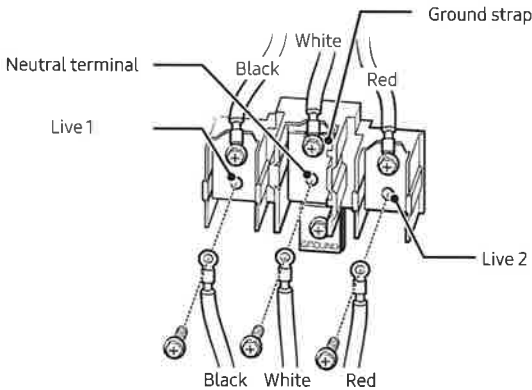
- You must install the power cord with a strain relief.
- Attach the strain relief to the 1 3⁄8" opening in the conduit connection plate.

CAUTION

You must check voltage after connecting power cord.

|                  |               |
|------------------|---------------|
| Live1 - Neutral  | 120 V         |
| Live 2 - Neutral | 120 V         |
| Live1 - Live 2   | 208 V / 240 V |

Installing a 3-wire power cord

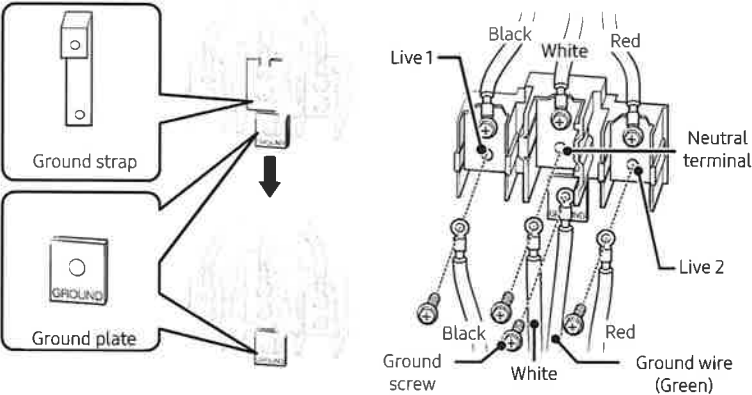


WARNING

The neutral or ground wire of the power cord must be connected to the neutral terminal located in the center of the terminal block. The power leads must be connected to the lower left and the lower right terminals of the terminal block.

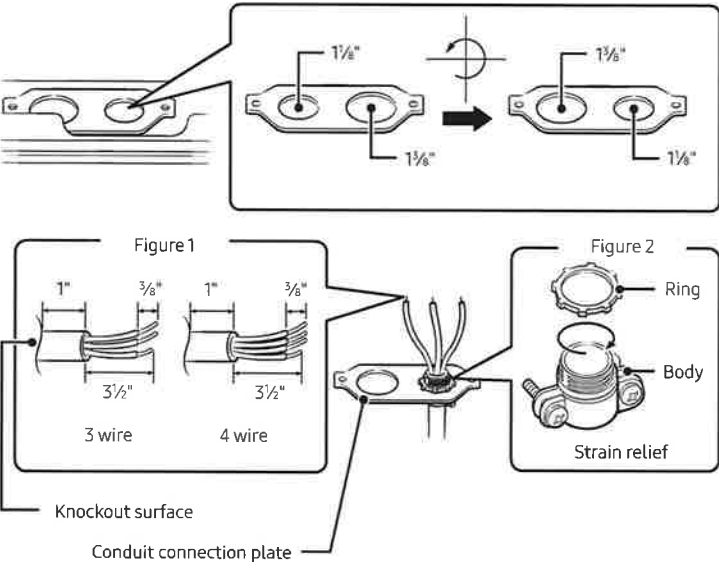
- Remove the 3 lower terminal screws from the terminal block.
- Insert the 3 terminal screws through each power cord terminal ring and into the lower terminals of the terminal block. Be certain that the center wire (white/neutral) is connected to the center lower position of the terminal block.
- Tighten screws securely to the terminal block. **DO NOT remove the ground strap connection.**
- Go to Step 5 on page 6 to continue with the installation.

Installing a 4-wire power cord



- ⚠ WARNING**
- The neutral wire of the supply circuit must be connected to the neutral terminal located in the lower center of the terminal block. The power leads must be connected to the lower left and the lower right terminals of the terminal block. The 4th grounding lead must be connected to the frame of the range with the ground plate and the ground screw.
1. Remove the 3 lower terminal screws from the terminal block. Remove the ground screw and ground plate and retain them.
  2. **Cut and discard the ground strap. Do not discard any screws.**
  3. Insert the ground screw into the power cord ground wire terminal ring, through the ground plate, and into the frame of the range.
  4. Insert the 3 terminal screws (removed earlier) through each power cord terminal ring and into the lower terminals of the terminal block. Be certain that the center wire (white/neutral) is connected to the center lower position of the terminal block. Tighten screws securely to the terminal block.
  5. Go to **Step 5** on page 6 to continue with the installation.

Step 4. Installing the conduit



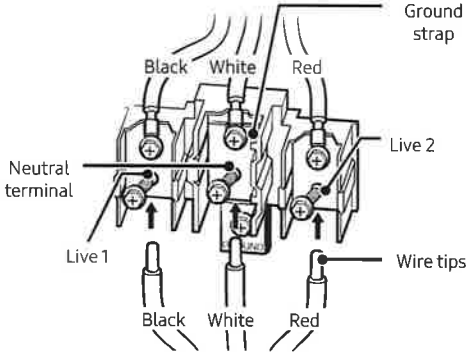
Remove the conduit connection plate and rotate it as shown below.  
The conduit hole (1 1/8") must be used.

1. Prepare the conduit cord as shown in Figure 1.
2. Install the conduit cord as shown in Figure 2.  
For conduit installations, insert the strain relief (not included) into the conduit hole (1 1/8"). Then thread the conduit cord through the body of the strain relief and fasten the ring. Reinstall the bracket.

**⚠ CAUTION**  
You must check voltage after connecting power cord.

|                  |               |
|------------------|---------------|
| Live 1 - Neutral | 120 V         |
| Live 2 - Neutral | 120 V         |
| Live 1 - Live 2  | 208 V / 240 V |

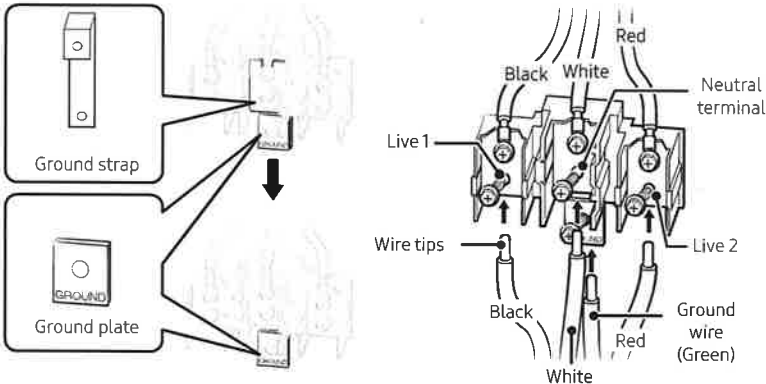
Installing a 3-wire conduit



- Aluminum building wire may be used but it must be rated for the correct amperage and voltage. Connect the wires as described below.
  - The wire you use, the location and enclosure of splices, etc., must conform to good wiring practices and local codes.
1. Loosen the 3 lower terminal screws from the terminal block.
  2. Insert the center bare wire (white/neutral) tip through the bottom center terminal block opening. On certain models, the wire will need to be inserted through the ground strap opening and then into the bottom center block opening.
  3. Insert the two side bare wire tips into the lower left and the lower right terminal block openings.
  4. Tighten the screws until the wire is firmly secured (35 to 50 inch-lbs.). Do not over-tighten the screws since it could damage the wires.
  5. Go to **Step 5** on page 6 to continue with the installation.

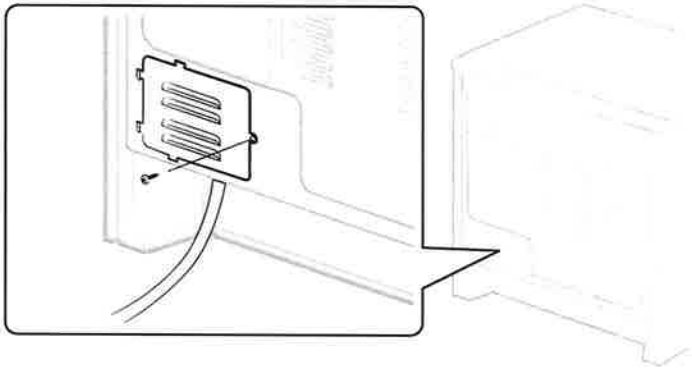


Installing a 4-wire conduit



- Aluminum building wire may be used but it must be rated for the correct amperage and voltage to make the connection. Connect the wires as described below.
  - The wire you use, the location and enclosure of splices, etc., must conform to good wiring practices and local codes.
- Loosen the 3 lower terminal screws from the terminal block. Remove the ground screw and ground plate and retain them.
  - Cut and discard the ground strap. Do not discard any screws.**
  - Insert the ground bare wire tip between the range frame and the ground plate (removed earlier) and secure it in place with the ground screw (removed earlier).
  - Insert the bare wire (white/neutral) tip through the bottom center of the terminal block opening.
  - Insert the two side bare wire tips into the lower left and the lower right terminal block openings.
  - Tighten the screws until the wire is firmly secured (35 to 50 inch-lbs.). Do not over-tighten the screws since it could damage the wires.
  - Go to **Step 5** on page **6** to continue with the installation.

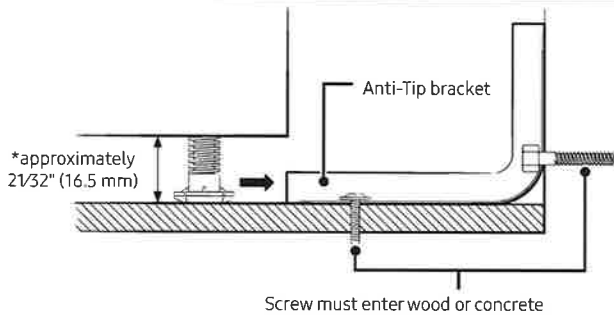
Step 5. Replacing the access cover



To replace the rear access cover on the range back. Insert the double projections on the bottom of the cover into the pockets located below the opening, and then insert and tighten the rear access cover screw.

Installing the range

Installing the anti-tip device



**WARNING**

To reduce the risk of tipping, you must secure the appliance by properly installing the Anti-Tip device packed with the appliance.

- Refer to the installation instructions supplied with the bracket.
- If the anti-tip device is not installed properly, an adult or child stepping on or sitting on the range door could tip the range and suffer serious injuries caused by spilled hot liquids or by the range itself.

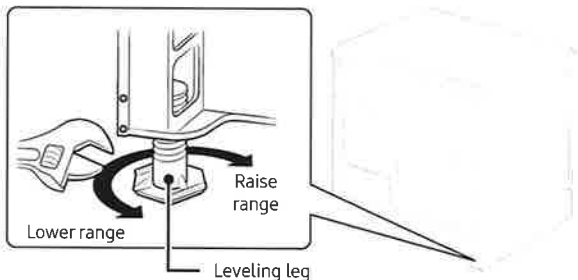
**NOTE**

To install the Anti-Tip bracket, release the leveling leg. A minimum clearance of  $2\frac{1}{32}$ " (16.5 mm) is required between the range bottom and the kitchen floor.

1. Install the bracket using the template

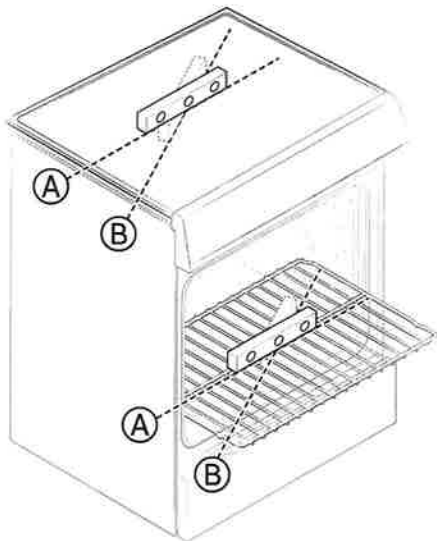
The Anti-Tip bracket is packaged with a template. The instructions include information necessary to complete the installation. Read and follow the instructions on the sheet (template) for range installation.

2. Level the range



Level the range by adjusting the leveling legs with a wrench.

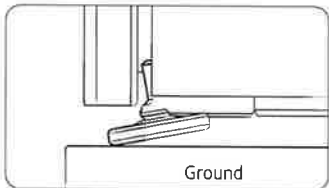
3. Check your adjustments



Use a spirit level to check your adjustments. Place the level diagonally on the oven rack or surface cooktop, and confirm the range is level in the two directions shown below.

- A. Check direction A.
- B. Check direction B.

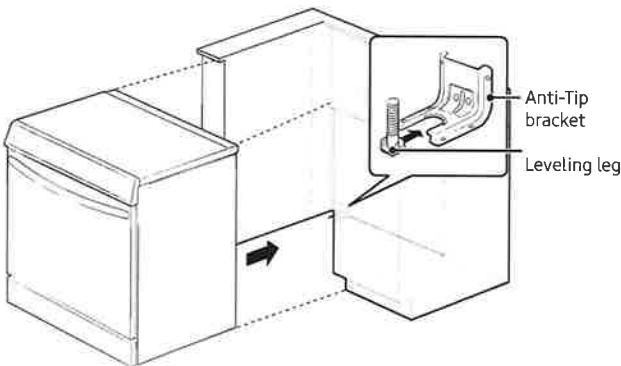
If the spirit level indicates that the range is not level, adjust the leveling legs with a wrench.



**CAUTION**

For your safety, do not attempt to modify or straighten front legs. Front leveling legs on the range are designed to be slanted to prevent accidental tipping.

Finalizing the installation



- Move range close enough to the opening to plug into the receptacle.
- Slide the range into position ensuring that the rear left (or rear right) leg slides under the Anti-Tip bracket.
- Carefully tip the range forward to insure that the Anti-Tip bracket engages the back brace and prevents tip-over.
- Turn on the electrical power. Check the range for proper operation as described in the user manual.

# ANCONA

LOT 5-71, INNISFIL

Purchaser's Initial: Ek

Mk  
MK

## WRC630 & WRC636

