

Lot 114



(/img/xxlarge/kitchenaid/slide-in-gas-range/KSGB900ESS_1.jpg)



Step up to KitchenAid KFGC500JSS for an extra \$1,500
(https://www.canadianappliance.ca/product/KitchenAid_KFGC500JSS_Range_KitchenAid_KFGC500JSS.html)

~~\$2,800~~
Step down to KitchenAid KSGG700ESS and save \$200
(https://www.canadianappliance.ca/product/KitchenAid_KSGG700ESS_Range_KitchenAid_KSGG700ESS.html)

- Description & Features
- Specs
- Manuals
- Video
- Reviews
- Warranty
- Financing
- Install
- FAQ

Install (https://www.canadianappliance.ca/product/KitchenAid_KSGB900ESS_Range_KitchenAid_KSGB900ESS.html#tab-inst...)

FAQ (https://www.canadianappliance.ca/product/KitchenAid_KSGB900ESS_Range_KitchenAid_KSGB900ESS.html#tab-faq)

Refinement KAD

FIT System

FIT System

Baking Drawer

Baking Drawer

Certifications

Prop 65

CALIFORNIA RESIDENTS ONLY - WARNING: Cancer and Reproductive Harm - www.P65Warnings.ca.gov

Oven Details

Drawer Type

Baking Drawer

Power On Indicator Light

Yes

Automatic Convection Conversion

Yes

Temperature Adjust

Oven Cooking System

Convection

Interior Color

Grey

Oven Control Type

Electronic Touch

Bake Element Power

18,000 BTU

Broiler Location

Top of Oven

Convection Element Type

Single-Fan

Oven Light Type

Incandescent

Number of Oven Lights

2

Number of Oven Racks

3

Number of Rack Guides

7

Oven Rack Type

1 Max Capacity, 1 Gliding Roll-Out, 1 Steam Rack

Oven Self-Cleaning

AquaLift® Self Clean

Hidden Bake Element

Yes

Convection Functions

Bake , Broil , Roast

Appearance

Handle Material

Metal

Door Type

Metal & Glass

Handle Color

Stainless Steel

Handle Type

Towel Bar

GDS

Product Type

EA

UDEX

1100400623

Dimensions

Depth Closed Including Handles

28-7/8 in

Depth Closed Excluding Handles

26-3/8 in

Capacity

6-1/2

Depth With Door Open 90 Degree

48-3/4 in

Height

36.0 in

Width

29-7/8 in

Dimensions

Gross Weight

261-1/2 lbs

Refinements

Features

Baking Drawer , EasyConvect Conversion , Even-Heat True Convection , FIT System , SatinGlide Racks , Steam Rack , ADA Compliant

Cooktop Details

Left Rear Element-Burner Type

Sealed Burner

Center Rear Element-Burner Power

8000 BTU

Left Front Element-Burner Type

Sealed Burner

Cooktop Element Style

Gas Burner

Right Rear Element-Burner Type

Sealed Burner

Left Rear Element-Burner Power

5000 BTU

Cooktop Surface Material

Stainless Steel

Cooktop Control Location

Front

Left Front Element-Burner Power

19,000 BTU

Number of Grates

2

Heating Element On Indicator Light

No

Number of Cooking Element-Burners

5

\$2,000

Power Outage Compatible

No

Hot Surface Indicator Light

No

Auto Re-ignition

No

Description & Features

Specs

Manuals

Video

Reviews

Warranty

Financing

Install

FAQ

Ignition Type	Electronic
Grate Details	Dishwasher Safe , Matte Finish , Continuous , Cast Iron Grates
Right Front Element-Burner Power	15,000 BTU
Cooktop Control Type	Knobs
Configuration and Overview	
Size	30 in
Fuel Type	Gas
Range Type	Slide-in
LP Convertible	Yes
ADA Compliant	ADA Height and Operation Compliant
UL	UL
Exterior	
Handle Color	Stainless Steel
Electrical Requirements	
Hz	
Power Cord Included	

Configuration and Overview

Fuel Type	Gas
Range Type	Slide-in

Cooktop Features

Cooktop Element Style	Gas Burner
Cooktop Surface Color	Color Coordinated
Cooktop Surface Material	Stainless Steel
Number of Cooking Element-Burners	5
Center Rear Element-Burner Power	8000 BTU
Center Rear Element-Burner Type	Sealed Burner
Left Front Element-Burner Power	19,000 BTU
Left Front Element-Burner Type	Sealed Burner
Left Rear Element-Burner Power	5000 BTU
Left Rear Element-Burner Type	Sealed Burner
Right Front Element-Burner Power	15,000 BTU
Right Front Element-Burner Type	Sealed Burner
Right Rear Element-Burner Power	9200 BTU
Right Rear Element-Burner Type	Sealed Burner
Number of Grates	2

Oven Features

Number of Oven Lights	2
Automatic Convection	Yes
Conversion Temperature Adjust	
Heating Element On Indicator Light	No
Hot Surface Indicator Light	No
Power On Indicator Light	Yes
Light Type	Incandescent
Oven Rack Type	1 Max Capacity, 1 Gliding Roll-Out, 1 Steam Rack
Self-Cleaning	AquaLift® Self Clean

Controls

Drawer Type	Baking Drawer
Handle Material	Metal
Handle Type	Towel Bar
Selections	Keep Warm Setting, Steam Bake, Baking Drawer Bake, Baking Drawer Slow Cook, Proofing, Cook Time Indicator, Delay Start, Baking Drawer Keep Warm, Sabbath Mode, Clock, Warm Zone
ADA Compliant	ADA Height and Operation Compliant
UL	UL

Dimensions

Height	36
Width	29 7/8

\$2,000

Lot 114

lot 114
ph 2



(/img/xxlarge/kitchenaid/french-door-freestanding-refrigerator/KRMF706ESS_1.jpg)



< > >> View & Compare KitchenAid French Door Refrigerator Line Up <<
KRMF706ESS_1.jpg KRMF706ESS_2.jpg KRMF706ESS_3.jpg KRMF706ESS_4.jpg KRMF706ESS_5.jpg KRMF706ESS_6.jpg KRMF706ESS_7.jpg KRMF706ESS_8.jpg KRMF706ESS_9.jpg KRMF706ESS_10.jpg KRMF706ESS_11.jpg KRMF706ESS_12.jpg KRMF706ESS_13.jpg KRMF706ESS_14.jpg

Step down to KitchenAid KRFF507HPS and save \$1,050
(https://www.canadianappliance.ca/product/KitchenAid_KRFF507HPS_French_Door_Refrigerator_KitchenAid_KRFF507HPS)

\$8,800

- Description & Features
- Ratings & Reviews
- Specs
- Manuals
- Video
- Rebates
- Warranty
- Financing
- Install
- FAQ

Warranty (https://www.canadianappliance.ca/product/KitchenAid_KRMF706ESS_French_Door_Refrigerator_KitchenAid_KRM...)

Financing (https://www.canadianappliance.ca/product/KitchenAid_KRMF706ESS_French_Door_Refrigerator_KitchenAid_KRM...)

Install (https://www.canadianappliance.ca/product/KitchenAid_KRMF706ESS_French_Door_Refrigerator_KitchenAid_KRMF70...)

FAQ (https://www.canadianappliance.ca/product/KitchenAid_KRMF706ESS_French_Door_Refrigerator_KitchenAid_KRMF706...)

Specifications

Compatibility

Connectivity No

Works With No

Configuration

Door Style Configuration French Door

Installation Configuration Freestanding

Refrigeration Configuration Refrigerator

Dimensions

Cabinet Width 90.49 cm, 35-5/8 in

Capacity 25-19/25

Cutout Height 175.26 cm, 69.0 in

Cutout Width 91.44 cm, 36.0 in

Depth 92.08 cm, 36-1/4 in

Depth Closed Excluding Handles 87.63 cm, 34-1/2 in

Depth Closed Including Handles 92.08 cm, 36-1/4 in

Depth Excluding Doors 73.66 cm, 29.0 in

Depth With Door Open 90 Degree 124.46 cm, 49.0 in

Freezer Volume 215.36 l, 7.61 cu. ft.

Height 178.12 cm, 70-1/8 in

Height To Top Of Cabinet 173.67 cm, 68-3/8 in

Height To Top Of Door Hinge 178.12 cm, 70-1/8 in

Refrigerator Volume 513.64 l, 18.15 cu. ft.

Width 91.44 cm, 36.0 in

Configuration and Overview

Advance Foam Insulation 99.9% lower Global Warming Potential and Better Energy Performance

Counter Depth No

Number of Doors 5

Appearance

Cabinet Finish Textured

Door Style Flat

Handle Material Metal

Hidden Hinge Yes

LCD Touch Screen No

Controls

Air Filter Indicator/Reset Yes

Automatic Defrost Yes

Control Location Exterior Dispenser

Door Ajar/Open Alarm Yes

Max Cool/Fast Cool Yes

Sabbath Mode Yes

Verrouillage des commandes Yes

Filter Details

Produce Preserver Yes

\$2,000

Water Filter Indicator/Reset Yes

Water Filter Location Interior

Lot 114

Description & Features

Specs

Manuals

Video

Reviews

Rebates

Warranty

Financing

Install

FAQ

Refrigerator Details	
Deli Drawer	No
Door Bins	Herb Tender Container
Lighting	LED
Number of Interior Shelves	5
Pantry Drawer	No
Freezer Details	
Freezer Number of Shelves	0
Dispenser Details	
Dispenser Options	Filtered Water, Measured/Metered Fill, Control/Child Lock
Dispenser Type	Exterior Ice and Water
Types of Ice	Crushed/Cubed
Icemaker Details	
Icemaker Location	Refrigerator Door
Certifications	
CEE Tier	Not Rated
Energy Star® Qualified	No
Prop 65	CALIFORNIA RESIDENTS ONLY - WARNING: Cancer and Reproductive Harm - www.P65Warnings.ca.gov .
ULe Environmentally Preferred Certified	Passed 60 point AHAM (Association of Home Appliance Manufacturers) Sustainability Standards
Refinements	
Features	Preserva Food Care System, Platinum Interior, Adjustable Spill Resistant Glass Shelves, Under-Shelf LED Lighting, Measured Water Fill, LED Lighting, 5-Door Refrigerators, Exterior Ice and Water Dispenser
Refinement KAD	
3-Tier Drawer with Storage Divider	3-Tier Drawer with Storage Divider
5-Door Refrigerators	5-Door Refrigerators
LED Lighting	LED Lighting
Measured Water Fill	Measured Water Fill
Preserva Food Care System	Preserva Food Care System
Produce Preserver	Produce Preserver
Details	
Cooling Type	Dual Evaporator
Exterior	
Base Grille Color	Grey
Cabinet Color	Grey
Freezer Compartment	
Door Bins	Pizza Pocket
Freezer Type	3 Tier
Light	LED
Filters	
Water Filter Part Number	EDR2RXD1
Icemaker	
Icemaker	Factory Installed
GDS	
GPC Code	10003695
IsInvoiceUnit	true
IsOrderableUnit	true
Product Type	EA
UDEX	1101290375
isBaseUnit	true
isConsumerUnit	true
EndecaProps	
ProductOutletCategories	Refrigerators
Status Badge	Esport CA New

W51 114
ph 2

Performance	
Freezer Capacity	7.61
Refrigerator Capacity	18.15
Energy Star® Qualified	No

\$8,888

Refrigerator Features
Humidity-Controlled Drawers

Specs
2 Half-Width

Video

Rebates
Rebate

Warranty

Financing

Install

FAQ

Lighting	LED
Number of Interior Shelf(s)	5
Spill-Proof Glass Shelf(s)	1 Adjustable Fold, 1 Fixed Full-Width, 3 Adjustable Half-Width
Temperature-Controlled Drawers	2 External Refrigerated Drawers
Door Bins	1 Fixed Full-Width, 3 Adjustable Gallon

Freezer Features

Number of Shelves	0
Interior Shelves	No
Freezer Light	LED
Ice Maker	Factory Installed

Controls

Automatic Defrost	Yes
Control Location	Exterior Dispenser
Control Type	Electronic

Dimensions

Depth	36 1/4
Height	70 1/8
Width	36
Cutout Height	69
Cutout Width	36
Height To Top Of Cabinet	68 3/8
Depth With Door Open 90 Degree	49
Depth Excluding Handles	34 1/2
Depth Closed Including Handles	36 1/4
Width with Doors Closed	36

114
ph 2
L-1

084099 08TA4494



Complete Suite

\$8,888

Description & Features

Specs

Manuals

Video

Rebates

Warranty

Financing

Install

FAQ

Silhouette



PRODUCT DESCRIPTION

What prizes are hidden behind doors 1 and 2? Your expertly preserved beverages of choice. This built-in features double the temperature zones to store your wine and beverages simultaneously and fan-forced cooling assists you in enjoying frost-free luxury.

SPECIFICATIONS

Dimensions

Width	60cm	23.8"
Depth	60cm	23.75"
Height	86cm	34"

Capacity

Bottle Capacity 750ml	60
Can capacity 330ml	27

Temperature Range

Temperature	Low: 2.8 °C	High: 17.8 °C
-------------	-------------	---------------

WARRANTY

The Silhouette SBC051D1BSS model comes with a 24-month warranty on parts and labour with convenient in-home service. The installation and yearly maintenance (cleaning) of the fridge are not covered under the warranty.

EMMENTAL

24" French Door Beverage Center - SBC051D1BSS

PRODUCT FEATURES

ELIMINATE STORAGE INCONSISTENCIES

Dual temperature zones bring an end to tough multi-beverage storage decisions. Wine and beverages require customized levels of cool, so two independently controlled sections, accessible through classic French doors, allow proper temps to be set for your distinct selection.

BANISH ICE BUILD UP

The frost-free, fan-forced cooling system in this unit makes unsightly and often damaging ice accumulation obsolete. The efficient defrosting system ensures you'll never deal with over-frozen frustrations.

NEVER BE LEFT IN THE DARK

The true, blue LED track lighting that illuminates the interior of this unit exquisitely displays your wine without any damaging heat. It is 50% brighter than the previous model and now offers 3 lighting options

*Where some see room for an appliance;
We see room for an experience*

www.silhouetteappliances.com

Lot 114, Ph2
Bladford

207 114 - DRADPOX

Venmar Connaisseur

Toscana Series

New Toscana Series... for the real *Connaisseur*!

Pleasure for your senses: Contemporary lines combined with retro touches, inspired by timeless Italian kitchens. A *Bravissimo* Chimney Range Hood!

- Brushed stainless steel finish
- Electronic push button control with LED
- Four ventilation speeds
- Two-intensity exclusive PURLED™ lighting including nightlight: two 5.5 watt LED bulbs (included)
- 5-minute delay function
- Dishwasher-safe thin baffle filters
- Filter maintenance indicator
- Heat Sentry™ detects excessive heat and adjusts speed to high automatically
- Ducted telescopic flue accommodates ceiling heights from 8 to 9 feet
- 8" round vertical discharge or 3 1/4" x 10" horizontal discharge (adapter/dampers included)
- Possibility of 2 different heights for horizontal ductwork to ease retrofit installation

Specifications

Width	Stainless Steel	Volts	Amps	CFM (max / min)	Sones (max / min)
30"	CC32I30SSL	120	4	600/200	9.5/1.4
36"	CC32I36SSL	120	4	600/200	9.5/1.4

Options

09019	Flue extension for 10' ceiling
09025	Non-duct kit
18524	Charcoal filter kit (2)
ARP8	Air flow reducer (limits the airflow of the hood under 300 CFM)

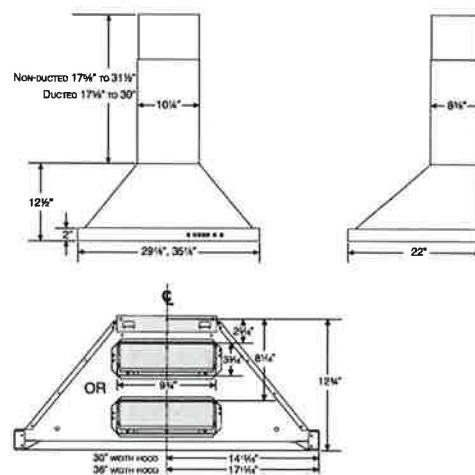
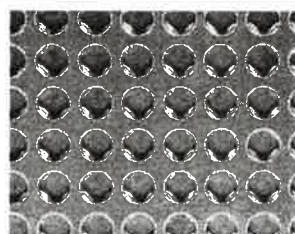
**PUR
LED**

IMPROVES
LIGHT OUTPUT
BY 25%
↑ 25%

IMPROVES
ENERGY EFFICIENCY
BY 88%
88%

DISTRIBUTES LIGHT
ON COOK SURFACES
6 TIMES BETTER
6X

EXCLUSIVE LIGHTING



For horizontal installation, in order to ease a retrofit installation, the horizontal discharge may be positioned on higher OR lower back of the hood.



VENMAR
Connaisseur

914468

www.venmar.ca
1-800-567-3855

Venmar Ventilation ULC
550 Lemire Boulevard
Drummondville, Quebec J2C 7W9

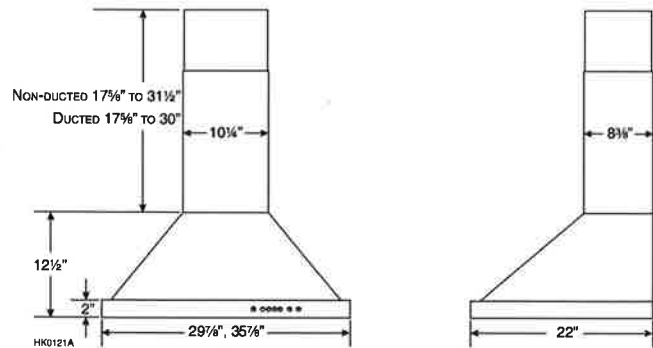
Specifications subject to change without notice.

SPECIFICATIONS

MODEL	CC32I
VOLTS	120 VAC
Hz	60
AMPS	4.0
CFM (LOW SPEED)	200
CFM (HIGH SPEED)	600*
SONES (LOW SPEED)	1.4
SONES (HIGH SPEED)	9.5
DUCTING SIZES	8" ROUND OR 3 1/4" x 10"
2 LED MODULES	120 V, 5.5 W
WARRANTY	5 YEARS (EXCEPT LED MODULES, 3 YEARS)

*OPTIONAL ARP8 AIR FLOW REDUCER
(LIMITS THE AIRFLOW OF THE HOOD UNDER 300 CFM).

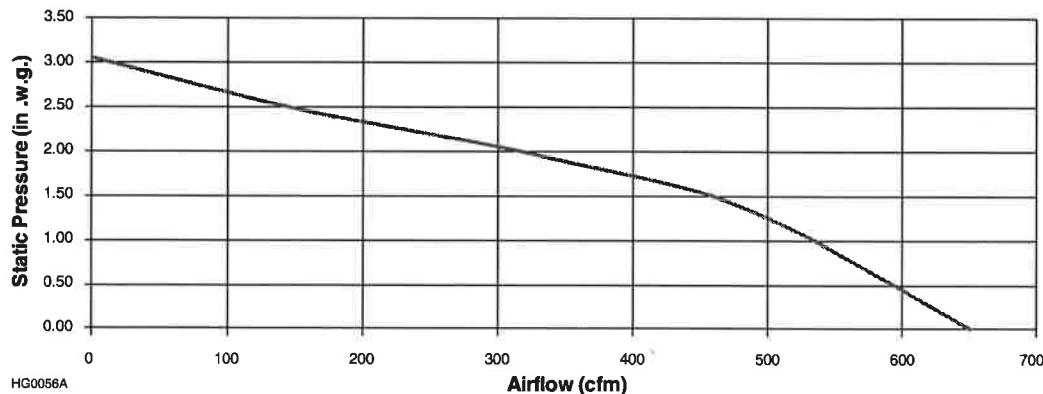
DIMENSIONS



REQUIREMENTS & STANDARDS

- Complies with CSA C22.2 no. 113 Standard
- Complies with UL 507 requirements
- HVI certified

AIR FLOW PERFORMANCE



HVI-2100 CERTIFIED RATINGS comply with new testing technologies and procedures prescribed by the Home Ventilating Institute, for off-the-shelf products, as they are available to consumers. Product performance is rated at 0.1 in. (2.54 mm) static pressure, based on tests conducted in a state-of-the-art test laboratory. Sones are a measure of humanly-perceived loudness, based on laboratory measurements.



www.venmar.ca

Venmar Ventilation ULC, 550 Lemire Blvd., Drummondville, Québec, Canada J2C 7W9 - Tel: 1-800-567-3855 Fax: 1-800-567-1715

PROJECT	REMARKS
LOCATION	
MODEL No.	
QTY.	
SUBMITTED BY	
DATE	

LOT 114
Ph 2



CAS

(/img/xxlarge/whirlpool/washer/WFW8620HC_1.jpg)



(/img/xxlarge/whirlpool/washer/WFW8620HC_1.jpg) (img/xxlarge/whirlpool/washer/WFW8620HC_2.jpg) (img/xxlarge/whirlpool/washer/WFW8620HC_3.jpg)
>> View & Compare Whirlpool Front Load Washer Line Up <<
load- washer/WFW8620HC_1.jpg load- washer/WFW8620HC_2.jpg load- washer/WFW8620HC_3.jpg
canada.jpg reviews.jpg review.jpg

Step up to Whirlpool WFW9620HC for an extra \$250
(https://www.canadianappliance.ca/product/Whirlpool_WFW9620HC_Front_Load_Washer_Whirlpool_WFW9620HC.html)

\$1,848

- Description & Features
- Ratings & Reviews
- Specs
- Manuals
- Video
- Reviews
- Rebates
- Warranty
- Financing
- Install
- FAQ

Specs (https://www.canadianappliance.ca/product/Whirlpool_WFW8620HC_Front_Load_Washer_Whirlpool_WFW8620HC.html)

Manuals (https://www.canadianappliance.ca/product/Whirlpool_WFW8620HC_Front_Load_Washer_Whirlpool_WFW8620HC.html)

Video (https://www.canadianappliance.ca/product/Whirlpool_WFW8620HC_Front_Load_Washer_Whirlpool_WFW8620HC.html)

Reviews (https://www.canadianappliance.ca/product/Whirlpool_WFW8620HC_Front_Load_Washer_Whirlpool_WFW8620HC.html)

Rebates (https://www.canadianappliance.ca/product/Whirlpool_WFW8620HC_Front_Load_Washer_Whirlpool_WFW8620HC.html)

Warranty (https://www.canadianappliance.ca/product/Whirlpool_WFW8620HC_Front_Load_Washer_Whirlpool_WFW8620HC.html)

Financing (https://www.canadianappliance.ca/product/Whirlpool_WFW8620HC_Front_Load_Washer_Whirlpool_WFW8620HC.html)

Install (https://www.canadianappliance.ca/product/Whirlpool_WFW8620HC_Front_Load_Washer_Whirlpool_WFW8620HC.html)

FAQ (https://www.canadianappliance.ca/product/Whirlpool_WFW8620HC_Front_Load_Washer_Whirlpool_WFW8620HC.html#t...)

Dimensions	
Capacity	5.00
Depth	33-1/4 in
Depth With Door Open 90 Degree	54-7/8 in
Height	38-5/8 in
Minimum Height	38-5/8 in
Width	27.0 in
LCD Touch Screen	No
Window	Yes
Dispense System	Detergent, Fabric Softener & Bleach
Drum Material	Stainless Steel
Hoses Included	4ft 4in Drain Hose Included
Interior Light	LED
Number of Wash Cycles	37
Energy Star® Qualified	No
Power Cord Included	Yes
Location of Controls	Front
Connectivity	No
Works With	No
Number of Washer Options	11
Pedestal Options	WFP2715HC, WFP2715HW
Stackable	Yes
Features	Load & Go Dispenser, Sanitize, Sanitize Cycle
Lid/Door Lock	Yes
Lid/Door Swing	Left
Number of Rinse Options	2
Number of Soil Levels	3
Number of Spin Speeds	5
Pre Soak	Yes
Soil Selections	Heavy, Normal, Light
Spin Speed Selections	Extra Fast, Fast, Medium, Off, Slow
Temperature Selections	Cold, Cool, Warm, Hot, Extra Hot

Lot 114 Ph 2

\$1,095



Lot 114
Ph 2

(/img/xxlarge/kitchenaid/dishwasher/KDTM404KPS_1.jpg)



Step up to KitchenAid KDTM604KPS for an extra \$100 (https://www.canadianappliance.ca/product/KitchenAid_KDTM604KPS_Built-In_Undercounter_Dishwashers_KitchenAid_KDTM604KPS.html)

Step down to KitchenAid KDFE104HPS and save \$400 (https://www.canadianappliance.ca/product/KitchenAid_KDFE104HPS_Built-In_Undercounter_Dishwashers_KitchenAid_KDFE104HPS.html)

Ratings & Reviews

4.8

96% of respondents would recommend this to a friend

\$599

Read Reviews (https://www.canadianappliance.ca/Reviews/KitchenAid_KDTM404KPS_Built-In_Undercounter_Dishwashers_KitchenAid_KDTM404KPS.html)

Description & Features

Specs

Manuals

Video

Reviews

Rebates

Warranty

Financing

Install

FAQ



Earn 32 AIR MILES® Reward Miles!*(<https://www.canadianappliance.ca/air-miles/>)

Call now to order! 1-877-374-3439 (tel:1-877-374-3439) 8:30 AM - 10:00 PM (ET)

Call showroom: [Select a Location](#)

Call Now! 877-374-3439 Or Chat For Bundle Discounts

MAP Price [Info](#) **\$1,294.99 CAD**

[Add to Cart](#)

[Visit a Showroom](#)

[Sales: 1-877-374-3439](#)
(tel:18773743439)

Multi-Offer Combo Deal

Buy this item and **make your picks during checkout!**
Grab more than one offer, up to \$50 in savings!* [Go on -- don't be shy.](#)

☐ Take Free Old Appliance Removal/Recycling! (\$20)

Pickup & Delivery

Postal Code

[Calculate Delivery](#)

Other Colours and Options

Loi 114



(https://www.canadianappliance.ca/product/KitchenAid_KDTM404KPS_Built-In_Undercounter_Dishwashers_KitchenAid_KDTM404KPS.html)

KDTM404KPS
E Star



KDTM404KBS
PrintShield™ Finish



KDTM604KPS
PrintShield™ Finish



KDTM704KPS
PrintShield™ Finish



KDTM804KPS
PrintShield™ Finish

(https://www.canadianappliance.ca/product/KitchenAid_KDTM404KPS_Built-In_Undercounter_Dishwashers_KitchenAid_KDTM404KPS.html)
\$1,294.99 CAD
(https://www.canadianappliance.ca/product/KitchenAid_KDTM404KBS_Built-In_Undercounter_Dishwashers_KitchenAid_KDTM404KBS.html)
\$1,294.99 CAD
(https://www.canadianappliance.ca/product/KitchenAid_KDTM604KPS_Built-In_Undercounter_Dishwashers_KitchenAid_KDTM604KPS.html)
\$1,494.99 CAD
(https://www.canadianappliance.ca/product/KitchenAid_KDTM704KPS_Built-In_Undercounter_Dishwashers_KitchenAid_KDTM704KPS.html)
\$1,794.99 CAD
(https://www.canadianappliance.ca/product/KitchenAid_KDTM804KPS_Built-In_Undercounter_Dishwashers_KitchenAid_KDTM804KPS.html)
\$1,794.99 CAD

Description & Features (https://www.canadianappliance.ca/product/KitchenAid_KDTM404KPS_Built-In_Undercounter_Dishwashers_KitchenAid_KDTM404KPS.html#tab-...)

Specs (https://www.canadianappliance.ca/product/KitchenAid_KDTM404KPS_Built-In_Undercounter_Dishwashers_KitchenAid_KDTM404KPS.html#tab-specs)

Manuals (https://www.canadianappliance.ca/product/KitchenAid_KDTM404KPS_Built-In_Undercounter_Dishwashers_KitchenAid_KDTM404KPS.html#tab-manuals)

Video (https://www.canadianappliance.ca/product/KitchenAid_KDTM404KPS_Built-In_Undercounter_Dishwashers_KitchenAid_KDTM404KPS.html#tab-video)

Reviews (https://www.canadianappliance.ca/product/KitchenAid_KDTM404KPS_Built-In_Undercounter_Dishwashers_KitchenAid_KDTM404KPS.html#tab-reviews)

Rebates (https://www.canadianappliance.ca/product/KitchenAid_KDTM404KPS_Built-In_Undercounter_Dishwashers_KitchenAid_KDTM404KPS.html#tab-rebates)

Warranty (https://www.canadianappliance.ca/product/KitchenAid_KDTM404KPS_Built-In_Undercounter_Dishwashers_KitchenAid_KDTM404KPS.html#tab-warranty)

Financing (https://www.canadianappliance.ca/product/KitchenAid_KDTM404KPS_Built-In_Undercounter_Dishwashers_KitchenAid_KDTM404KPS.html#tab-financing)

Install (https://www.canadianappliance.ca/product/KitchenAid_KDTM404KPS_Built-In_Undercounter_Dishwashers_KitchenAid_KDTM404KPS.html#tab-installation)

FAQ (https://www.canadianappliance.ca/product/KitchenAid_KDTM404KPS_Built-In_Undercounter_Dishwashers_KitchenAid_KDTM404KPS.html#tab-faq)

Specifications

Refinements

Features

Third Level Rack

Dimensions

Depth

67.94 cm, 26-3/4 in

Depth Closed Excluding Handles

62.23 cm, 24-1/2 in

Depth Closed Including Handles

67.94 cm, 26-3/4 in

Depth With Door Open 90 Degree

129.54 cm, 51.0 in

Height

85.09 cm, 33-1/2 in

Number of Place Settings

16

Width

60.64 cm, 23-7/8 in

Configuration and Overview

Decibel Level dBA

44

Dishwasher Type

Built-In

\$5000

Controls

Automatic Temperature Controls Yes

Desiccant Drawer

Specs Hidden

Manuals

Video

Reviews

Rebates

Warranty

Financing

Install

FAQ

Sensor	Yes
Appearance	
Door Style	Flat
Handle Material	Metal
Details	
Built-In Water Softener	No
Dispenser	Detergent and Rinse Aid
Interior Light	No
Number of Racks	3
Number of Wash Levels	7.0
Number of Washarms	5
Rack Material	Nylon
Rinse Aid Dispenser Level Indicator	Yes
True Hold Door	Yes
Tub Material	Stainless Steel
Tub Style	Built-in Tall Tub 24"
Water Filtration	Yes
Features	
Sound Package	Yes
Cycles and Options	
Number of Wash Cycles	5
Options	
Dishwasher Option Selections	Hi Temp Wash, Sani Rinse®, Heated Dry, 2-4-8 Hour Delay, Extended Heat Dry
Lower Rack	
Cushion-Tip Tines	Yes
Fold-Down Tines	1 Adjustable & 1 Fold Down
Style	Extended
Utility Basket	No
Silverware Basket	
Covers	Yes
Culinary Basket	No
Location	Bottom Rack
Third Level Rack	
Adjustable	No
Removable	Yes
Certifications	
CEE Tier	Tier I
Energy Star® Qualified	ENERGY STAR® Qualified
Kosher Consumer Friendly	Yes
NSF® Certified	Yes
Prop 65	CALIFORNIA RESIDENTS ONLY - WARNING: Cancer and Reproductive Harm - www.P65Warnings.ca.gov
Electrical	
Power Cord Included	No
EndecaProps	
ProductOutletCategories	Dishwashers
Exterior	
Magnetic Door	Yes
2nd Level Rack	
Adjustable	2 Position-Removable

LOT 114

Dimensions
Depth 26 3/4
Width 23 7/8
Height 34 1/2
Carton Depth 26 7/16
Carton Height 35 1/16
Carton Width 24 1/4
Gross Weight 116
Net Weight 105.0
Depth Closed Excluding Handles 24 1/2
Depth Closed Including Handles 26 3/4
Depth With Door Open 90 Degree 51
Maximum Height 34 1/2
Minimum Height 33 1/2

Certifications
Prop 65 Standard
ADA Compliant No
CEE Tier Tier I
Energy Star® Qualified ENERGY STAR® Qualified
NSF® Certified Yes
CUL Yes
Energy Rating (kWH/year) 270
Kosher Consumer Friendly Yes
UL Yes

Configuration and Overview
Dishwasher Type Built-In
Decibel Level dBA 44

Controls
Automatic Temperature Controls Yes
Control Type Tap Touch
Control Location Hidden,Top
Sensor Yes
Status Light White

\$599.00

4/8/2021

KDTM404KPS KitchenAid Dishwasher Canada - Sale! Best Price, Reviews and Specs - Toronto, Ottawa, Montréal, Vancouver, Calgary

Dispenser Detergent and Rinse Aid
Rinse Aid Dispenser Level Indicator Yes
True Hold Door Yes
Rack Material Nylon
Tub Material Stainless Steel
Number of Wash Levels 7
Built-In Water Softener No
Interior Light No
Drying System Type Vent Dry with Heating Element
Number of Racks 3
Number of Washarms 5
Tub Style Built-in Tall Tub 24"
Wash System Clean Water Wash
Wash System Type MicroFilter
Water Filtration Yes
Hoses Included Drain Hose

Exterior
Handle Type Towel Bar
Handle Color Stainless Steel
Magnetic Door Yes

Features
Sound Package Yes

Appearance
Door Style Flat
Handle Material Metal

Cycles and Options
Number of Wash Cycles 5
Dishwasher Cycle Selections Express Wash,Normal,ProWash™,Rinse Only,Tough

2nd Level Rack
Adjustable 2 Position-Removable
Cushion-Tip Tines Yes
Style Extended
Extras 2 Stemware Holders,Stainless Steel Wash Arm
Fold-Down Tines 1 Row 6 Position
Glides Ball Bearings
Utility Basket No

Options
Dishwasher Option Selections Extended Heat Dry,2-4-8 Hour Delay,Heated Dry,Hi Temp Wash,Sani Rinse®

Electrical
Amps 15
Power Cord Included No
Hz 60
Volts 120

Silverware Basket
Type Large In-the-Rack Basket
Covers Yes
Location Bottom Rack
Culinary Basket No

Third Level Rack
Removable Yes

Lot 114

08CW1199 08AC1294 08TA1294



KitchenAid

BUILT-IN SAVINGS EVENT

APRIL 1ST - MAY 26, 2021

SAVE UP TO \$1300

WHEN YOU BUY 3 OR MORE KITCHENAID® MAJOR APPLI

CAS CANADIAN APPLIANCE SOURCE

See our Best Stores for details.

[Description & Features](#) [Specs](#) [Manuals](#) [Video](#) [Reviews](#) [Rebates](#) [Warranty](#) [Financing](#) [Install](#) [FAQ](#)