

Lindsay 2017 Developments Inc. / Sugarwood

**Lot/Unit: 189 Block 96 Phase/Building: 1 Model/Floor Plan: Four Mile Lake(2004)Elev B
3Bed 2.5Bath**

CABINETRY APPLIANCE - FRIDGE

Inv.6607	1 - 66CM DEEP FRIDGE ENCLOSURE - COUNTER DEPTH WITH NO WALLS - 2 66CM DEEP GABLES AND 1 66CM DEEP CABINET - THIS IS NOT A ZERO CLEARANCE ENCLOSURE. STANDARD HEIGHTS AND WIDTHS WILL BE USED. - CLASSIC SERIES	
Line 82357	Note:	
9Jun25 / 20Jun25		

CABINETRY BASE CABINETS

Inv.6607	1 - POTS & PANS DRAWER - MINIMUM 60 CM - MAXIMUM 90 CM - SIZE SUBJECT TO FLOOR PLAN - CLASSIC SERIES, SEE SKETCH #1	
Line 82359	Note:	
9Jun25 / 20Jun25		

CABINETRY HOOD FANS

Inv.6607	1 - HOOD FAN - PRO COLLECTION (PTB5630) UNDERMOUNT RANGE HOOD WITH 600 CFM FAN - 30 INCH	
Line 82454	Note:	
9Jun25 / 20Jun25		

CABINETRY VANITY

Inv.6607	3 - INCREASE VANITY TO KITCHEN HEIGHT - 90CM HIGH - MAINTAINS VANITY DEPTH - CLASSIC SERIES IN THE PWD, MASTER ENSUITE AND MAIN BATHROOM	
Line 82360	Note:	
9Jun25 / 20Jun25		

CABINETRY WALL AND HUTCH

Inv.6607	1 - UPPER ANGLE CORNER PER UNIT - CLASSIC SERIES	
Line 82452	Note:	
9Jun25 / 20Jun25		

ELECTRICAL

Inv.6607	1 - TO SUPPLY THE ELEC. REQUIRED FOR THE OPTIONAL FIREPLACE	
Line 82462	Note:	
9Jun25 / 20Jun25		
Inv.6607	1 - TO SUPPLY AND INSTALL STD. TV AND PHONE ROUGH-IN, SEE SKETCH #2	
Line 82455	Note:	
9Jun25 / 20Jun25		
Inv.6607	1 - SUPPLY AND INSTALL AN ADDITIONAL BASIC RECEPTACLE (NOT DEDICATED) AT 66" UP FROM THE FLOOR OVER THE F/P MANTLE, SEE SKETCH #2	
Line 82456	Note:	
9Jun25 / 20Jun25		

Lindsay 2017 Developments Inc. / Sugarwood

**Lot/Unit: 189 Block 96 Phase/Building: 1 Model/Floor Plan: Four Mile Lake(2004)Elev B
3Bed 2.5Bath**

Inv.6607	3 - DO NOT SUPPLY AND INSTALL THE STANDARD MAIN HALLWAY LIGHT, KEEP THE SWITCH, SUPPLY & INSTALL THREE IC 4 in POT LIGHT C/W PAR 20 BULB AND WHTIE TRIM CONNECTED TO THE STD. SWITCH, SEE SKETCH #2	
Line 82457	Note:	
9Jun25 / 20Jun25		
Inv.6607	4 - TO SUPPLY & INSTALL FOUR IC 4 in POT LIGHT C/W PAR 20 BULB AND WHTIE TRIM CONNECTED TO A SEP. SWITCH, SEE SKETCH #2	
Line 82458	Note:	
9Jun25 / 20Jun25		
Inv.6607	4 - TO SUPPLY & INSTALL FOUR IC 4 in POT LIGHT C/W PAR 20 BULB AND WHTIE TRIM CONNECTED TO A SEP. SWITCH IN THE GREAT ROOM, SEE SKETCH #2	
Line 82459	Note:	
9Jun25 / 20Jun25		
Inv.6607	1 - TO RELOCATE THE STD KITCHEN LIGHT, TO OVER THE ISLAND IN THE KITCHEN, SEE SKETCH #2	
Line 82460	Note:	
9Jun25 / 20Jun25		

FIREPLACE

Inv.6607	1 - TO SUPPLY AND INSTALL THE OPTIONAL F/P IN THE GREAT ROOM	
Line 82461	Note:	
9Jun25 / 20Jun25		

PLUMBING

Inv.6607	1 - To supply the optional double sink in the main bathroom, see sketch #1	
Line 82366	Note:	
9Jun25 / 20Jun25		

EXTRAS AS PER OFFER

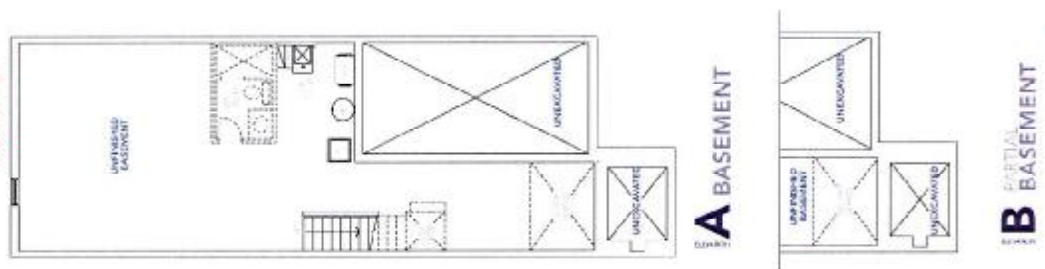
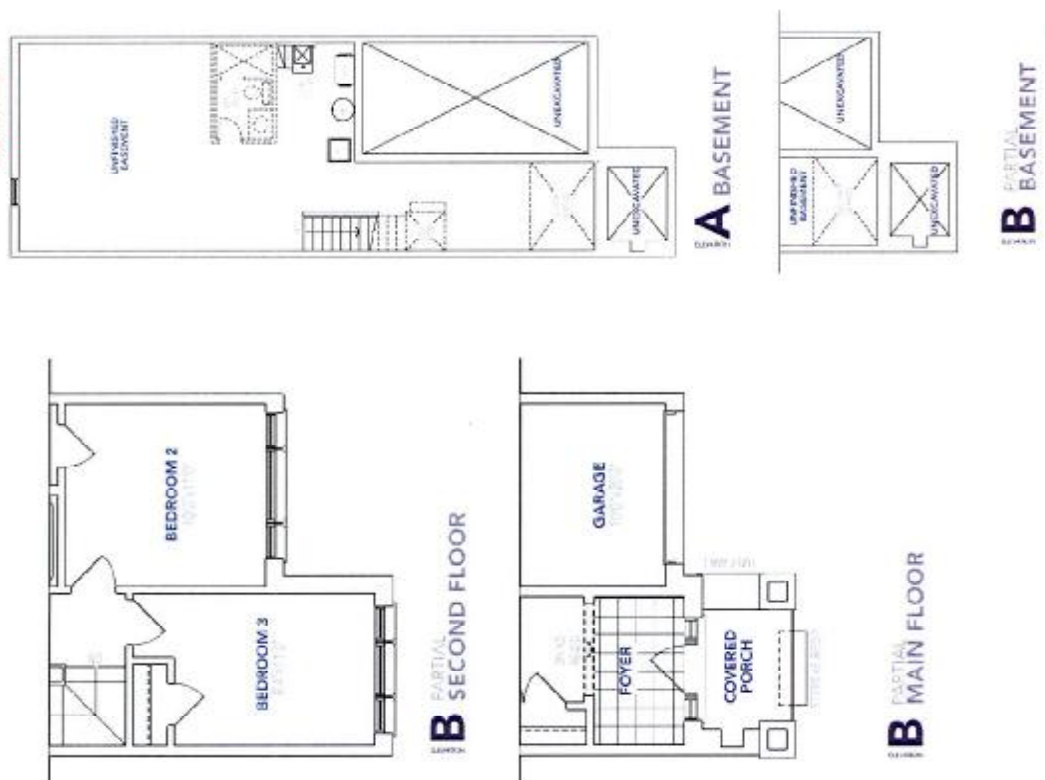
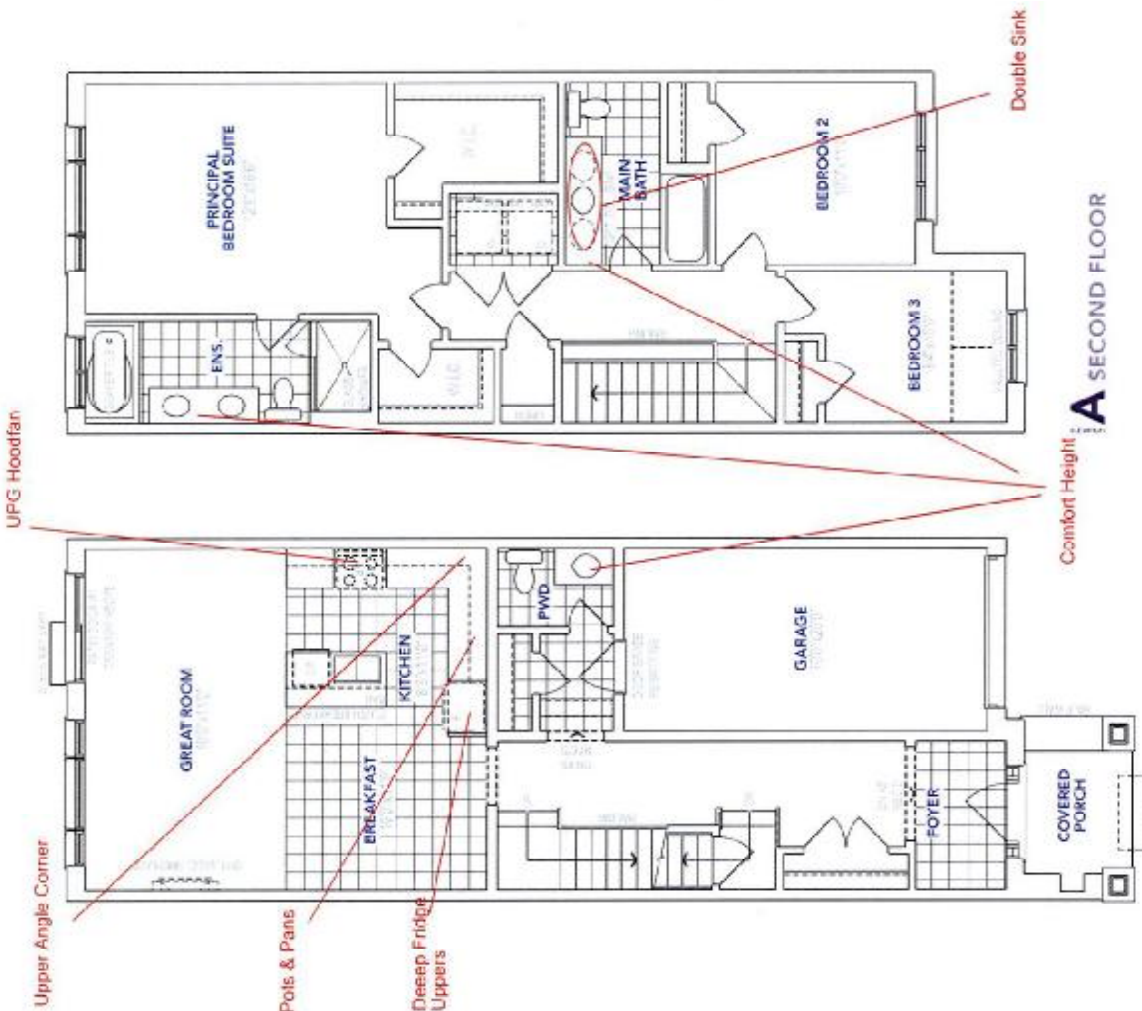
Note:	
-------	--

Four Mile Lake

1770 sq. ft. / 3 Bedrooms / 2 1/2 Bathrooms

KINGSILLEN
GROUP INC.

Lot 189 PH 1
SKETCH #1



Four Mile Lake

2004

1770 sq. ft. / 3 Bedrooms / 2 1/2 Bathrooms

KINGSJIEN GROUP INC.

Lot 189 PH
1 SKETCH
#2

4 Potlights connected to a sep. switch

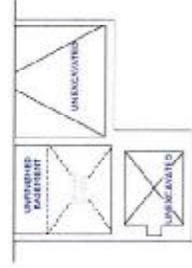
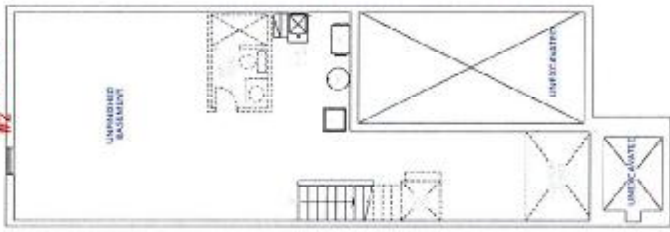
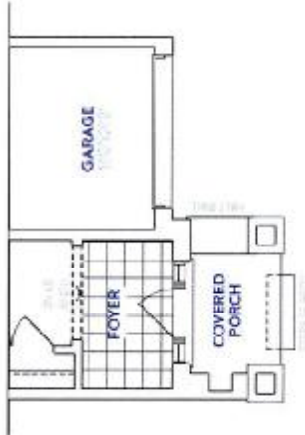
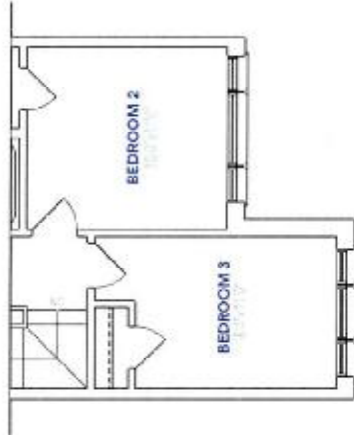
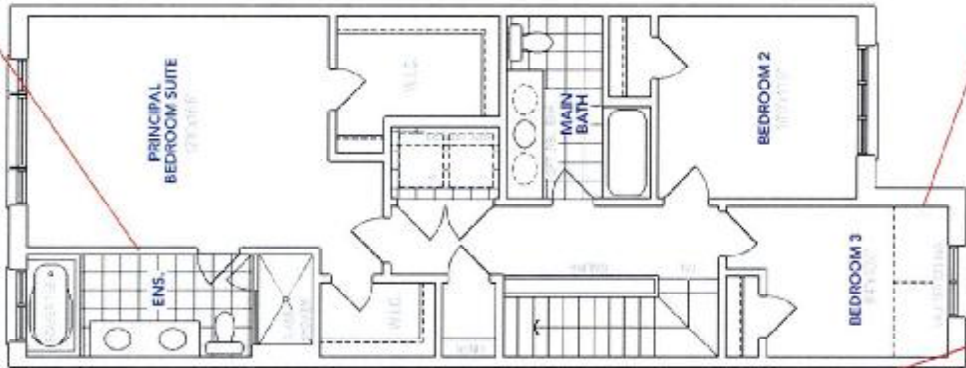
PH
TV
Receptacle
@66"

3 Potlights connected to the std. hallway switch

Relocate Std Light

PH
TV

PH



SUGARWOOD

Nature's Splendor and Nurture are inherent in every design. Sugarwood is a leading name in the industry. Our designs are innovative and unique. Sugarwood is a leading name in the industry. Our designs are innovative and unique. Sugarwood is a leading name in the industry. Our designs are innovative and unique.