

Lindsay 2017 Developments Inc. / Sugarwood

Lot/Unit: 188 Block 96 Phase/Building: 1 Model/Floor Plan: Four Mile Lake(2004)Elev B
3Bed 2.5Bath

CABINETRY

Inv.6606	1 - TO ACCOMODATE FOR CHIMENY HOODFAN	
Line 82450	Note:	
9Jun25 / 20Jun25		

CABINETRY APPLIANCE - FRIDGE

Inv.6606	1 - 66CM DEEP FRIDGE ENCLOSURE - COUNTER DEPTH WITH NO WALLS - 2 66CM DEEP GABLES AND 1 66CM DEEP CABINET - THIS IS NOT A ZERO CLEARANCE ENCLOSURE. STANDARD HEIGHTS AND WIDTHS WILL BE USED. - CLASSIC SERIES	
Line 82446	Note:	
9Jun25 / 20Jun25		

CABINETRY BASE CABINETS

Inv.6606	1 - POTS & PANS DRAWER - MINIMUM 60 CM - MAXIMUM 90 CM - SIZE SUBJECT TO FLOOR PLAN - CLASSIC SERIES	
Line 82448	Note:	
9Jun25 / 20Jun25		

CABINETRY HOOD FANS

Inv.6606	1 - HOOD FAN - ALITO COLLECTION (SCB51930) WALL MOUNT RANGE HOOD WITH BAFFLED GRILLS AND WITH 550 CFM FAN - 30 INCH	
Line 82449	Note:	
9Jun25 / 20Jun25		

CABINETRY VANITY

Inv.6606	3 - INCREASE VANITY TO KITCHEN HEIGHT - 90CM HIGH - MAINTAINS VANITY DEPTH - CLASSIC SERIES IN THE MASTER, MAIN AND PWD	
Line 82451	Note:	
9Jun25 / 20Jun25		

CABINETRY WALL AND HUTCH

Inv.6606	1 - UPPER ANGLE CORNER PER UNIT - CLASSIC SERIES	
Line 82447	Note:	
9Jun25 / 20Jun25		

ELECTRICAL

Inv.6606	1 - TO SUPPLY THE ELEC. REQUIRED FOR THE OPTIONAL F/P	
Line 82442	Note:	
9Jun25 / 20Jun25		
Inv.6606	1 - TO SUPPLY AND INSTALL AN ADDITIONAL BASIC RECEPTACLE (NOT DEDICATED) AT 66" UP FROM THE FLOOR OVER THE F/P MANTLE, SEE SKETCH #2	
Line 82443	Note:	
9Jun25 / 20Jun25		
Inv.6606	1 - TO SUPPLY AND INSTALL STD TV AND PHONE ROUGH-IN, SEE SKETCH #2	
Line 82436	Note:	
9Jun25 / 20Jun25		



CONSTRUCTION SUMMARY

Lindsay 2017 Developments Inc. / Sugarwood

Lot/Unit: 188 Block 96 Phase/Building: 1 Model/Floor Plan: Four Mile Lake(2004)Elev B
3Bed 2.5Bath

Inv.6606 Line 82437 9Jun25 / 20Jun25	1 - TO RELOCATE THE STANDARD KITCHEN LIGHT, SEE LOCATION ON SKETCH #2 Note:	
Inv.6606 Line 82438 9Jun25 / 20Jun25	3 - DO NOT SUPPLY OR INSTALL THE STANDARD MAIN HALLWAY LIGHT, KEEP THE SWITCH, SUPPLY & INSTALL THREE IC 4 in POT LIGHT C/W PAR 20 BULB AND WHTIE TRIM CONNECTED TO THE STD SWITCH, SEE SKETCH #2 Note:	
Inv.6606 Line 82439 9Jun25 / 20Jun25	4 - TO SUPPLY & INSTALL FOUR IC 4 in POT LIGHT C/W PAR 20 BULB AND WHTIE TRIM IN THE KITCHEN CONNECTED TO A SEP SWITCH, SEE SKETCH #2 Note:	
Inv.6606 Line 82440 9Jun25 / 20Jun25	4 - TO SUPPLY & INSTALL FOUR IC 4 in POT LIGHT C/W PAR 20 BULB AND WHTIE TRIM IN THE GREAT ROOM CONNECTED TO A SEP. SWITCH, SEE SKETCH #2 Note:	

FIREPLACE

Inv.6606 Line 82441 9Jun25 / 20Jun25	1 - TO SUPPLY AND INSTALL OPTIONAL F/P Note:	
--	---	--

PLUMBING

Inv.6606 Line 82445 9Jun25 / 20Jun25	1 - To supply and install the optional double sink in the main bathroom, see sketch #1 Note:	
--	---	--

EXTRAS AS PER OFFER

Note:	
-------	--

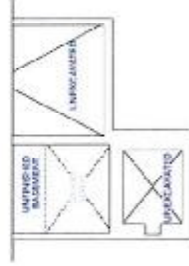
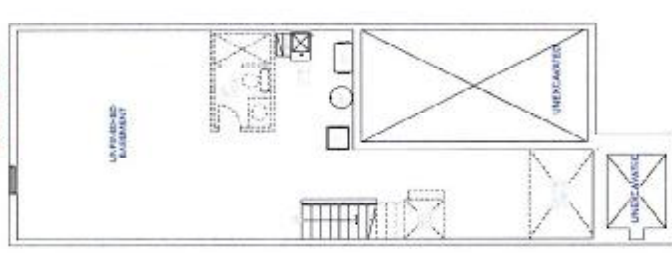
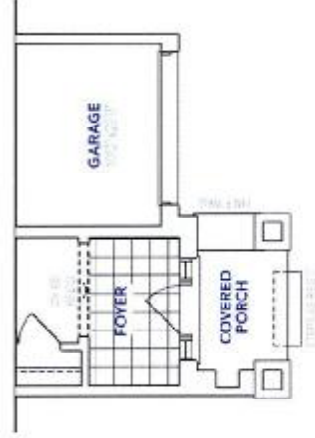
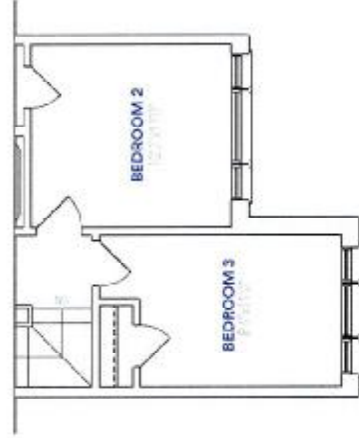
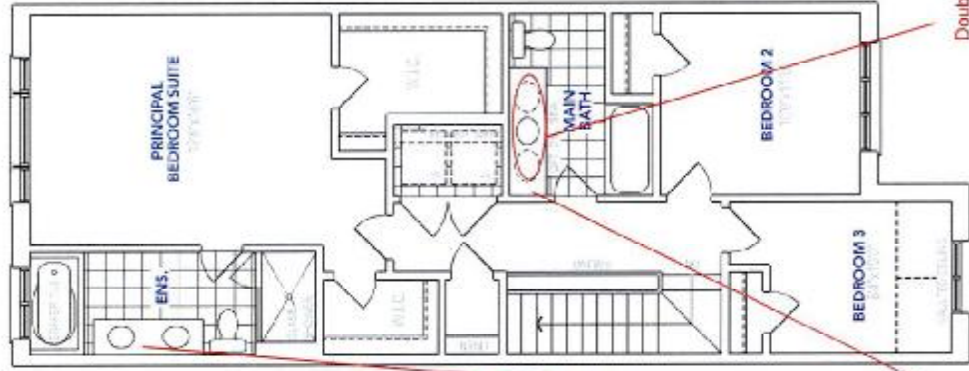
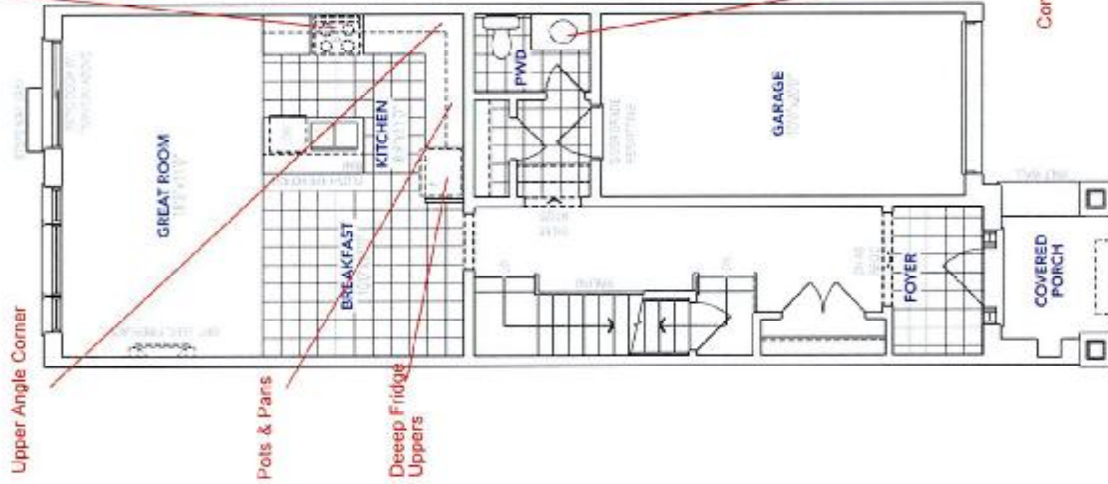
2004

Four Mile Lake

1770 sq. ft. / 3 Bedrooms / 2 1/2 Bathrooms

KINGSILLEN GROUP INC.

Lot 188 PH 1
SKETCH #1



SUGARWOOD

Materials, specifications and dimensions are subject to change without notice. All measurements are approximate and should not be used for construction purposes. Sugarwood is not responsible for any errors or omissions. Sugarwood is not a registered trademark.

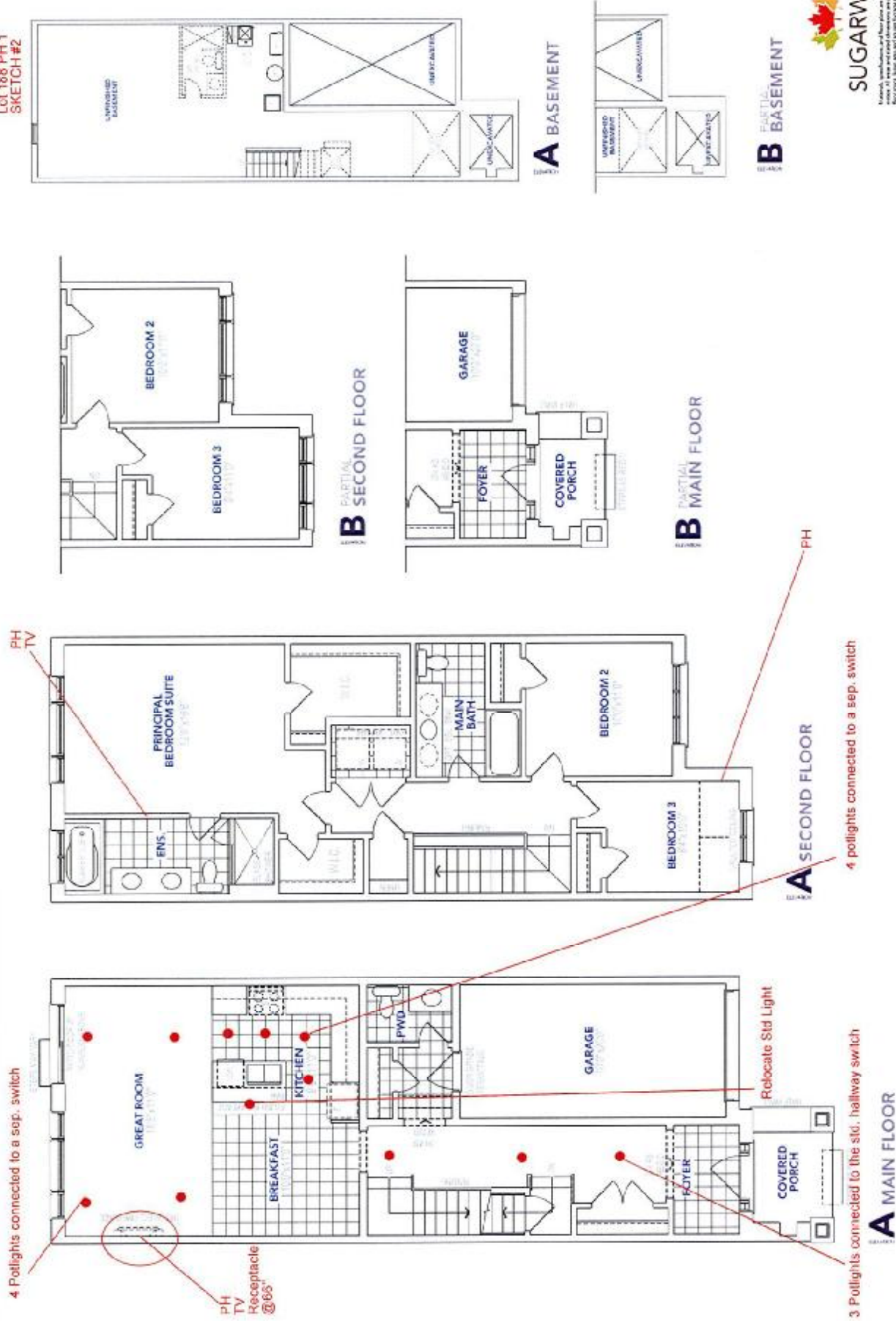
Four Mile Lake

2004

KINGSIJEN GROUP INC.

1770 sq. ft. / 3 Bedrooms / 2 1/2 Bathrooms

Lot 188 PH 1
SKETCH #2



SUGARWOOD

Residential developments and floor plans are subject to change without notice. All areas and room dimensions are approximate. All dimensions are given in feet and inches. All dimensions are given in feet and inches. All dimensions are given in feet and inches.