

Lindsay 2017 Developments Inc. / Sugarwood

Lot/Unit: 187 Block 96    Phase/Building: 1    Model/Floor Plan: Mitchell Lake(2002)Elev B  
3Bed 2.5Bath

CABINETRY

Inv.6605	1 - To accomodate for upgraded hoodfan, see spec's	
Line 82435	Note:	
9Jun25 / 19Jun25		

CABINETRY APPLIANCE - FRIDGE

Inv.6605	1 - 66CM DEEP FRIDGE ENCLOSURE - COUNTER DEPTH WITH NO WALLS - 2 66CM DEEP GABLES AND 1 66CM DEEP CABINET - THIS IS NOT A ZERO CLEARANCE ENCLOSURE. STANDARD HEIGHTS AND WIDTHS WILL BE USED. - CLASSIC SERIES	
Line 82429	Note:	
9Jun25 / 19Jun25		

CABINETRY BASE CABINETS

Inv.6605	1 - POTS & PANS DRAWER - MINIMUM 60 CM - MAXIMUM 90 CM - SIZE SUBJECT TO FLOOR PLAN - CLASSIC SERIES	
Line 82432	Note:	
9Jun25 / 19Jun25		

CABINETRY HOOD FANS

Inv.6605	1 - HOOD FAN - PRO COLLECTION (SCB72230) WALL MOUNT RANGE HOOD WITH 650 CFM FAN - 30 INCH	
Line 82430	Note:	
9Jun25 / 19Jun25		

CABINETRY VANITY

Inv.6605	3 - INCREASE VANITY TO KITCHEN HEIGHT - 90CM HIGH - MAINTAINS VANITY DEPTH - CLASSIC SERIES IN PWD, MAIN AND MASTER BATHROOM	
Line 82433	Note:	
9Jun25 / 19Jun25		
Inv.6605	1 - VANITY BANK OF DRAWERS - 60CM TO 90CM WIDE - CLASSIC SERIES, MASTER ENSUITE, SEE SKETCH #1	
Line 82434	Note:	
9Jun25 / 19Jun25		

CABINETRY WALL AND HUTCH

Inv.6605	1 - UPPER ANGLE CORNER PER UNIT - CLASSIC SERIES	
Line 82431	Note:	
9Jun25 / 19Jun25		

ELECTRICAL

Inv.6605	1 - TO SUPPLY THE ELEC. REQUIRED FOR THE OPTIONAL ELEC. F/P	
Line 82427	Note:	
9Jun25 / 19Jun25		



CONSTRUCTION SUMMARY

Lindsay 2017 Developments Inc. / Sugarwood

Lot/Unit: 187 Block 96    Phase/Building: 1    Model/Floor Plan: Mitchell Lake(2002)Elev B  
3Bed 2.5Bath

Inv.6605	1 - TO SUPPLY AND INSTALL AN ADDITIONAL BASIC RECEPTACLE (NOT DEDICATED) AT 66" UP FROM THE GROUND OVER THE F/P MANTLE. SEE SKETCH #2	
Line 82428	Note:	
9Jun25 / 19Jun25		
Inv.6605	1 - TO SUPPLY AND INSTALL STD TV AND PHONE ROUGH-IN, SEE SKETCH #2 FOR LOCATION	
Line 82421	Note:	
9Jun25 / 19Jun25		
Inv.6605	1 - To relocate the standard kitchen light to over the island, see sketch #2	
Line 82422	Note:	
9Jun25 / 19Jun25		
Inv.6605	2 - DO NOT INSTALL THE STANDARD MAIN HALLWAY LIGHT & KEEP THE SWITCH.. SUPPLY & INSTALL TWO IC 4 in POT LIGHT C/W PAR 20 BULB AND WHTIE TRIM CONNECTED TO THE STANDARD SWITCH.. SEE SKETCH #2	
Line 82423	Note:	
9Jun25 / 19Jun25		
Inv.6605	4 - TO SUPPLY & INSTALL FOUR IC 4 in POT LIGHT C/W PAR 20 BULB AND WHTIE TRIM CONNECTED TO A SEP SWITCH IN THE KITCHEN, SEE SKETCH #2	
Line 82424	Note:	
9Jun25 / 19Jun25		
Inv.6605	4 - TO SUPPLY & INSTALL FOUR IC 4 in POT LIGHT C/W PAR 20 BULB AND WHTIE TRIM IN THE LIVING/DINING ROOM CONNECTED TO A SEP. SWITCH, SEE SKETCH #2	
Line 82425	Note:	
9Jun25 / 19Jun25		

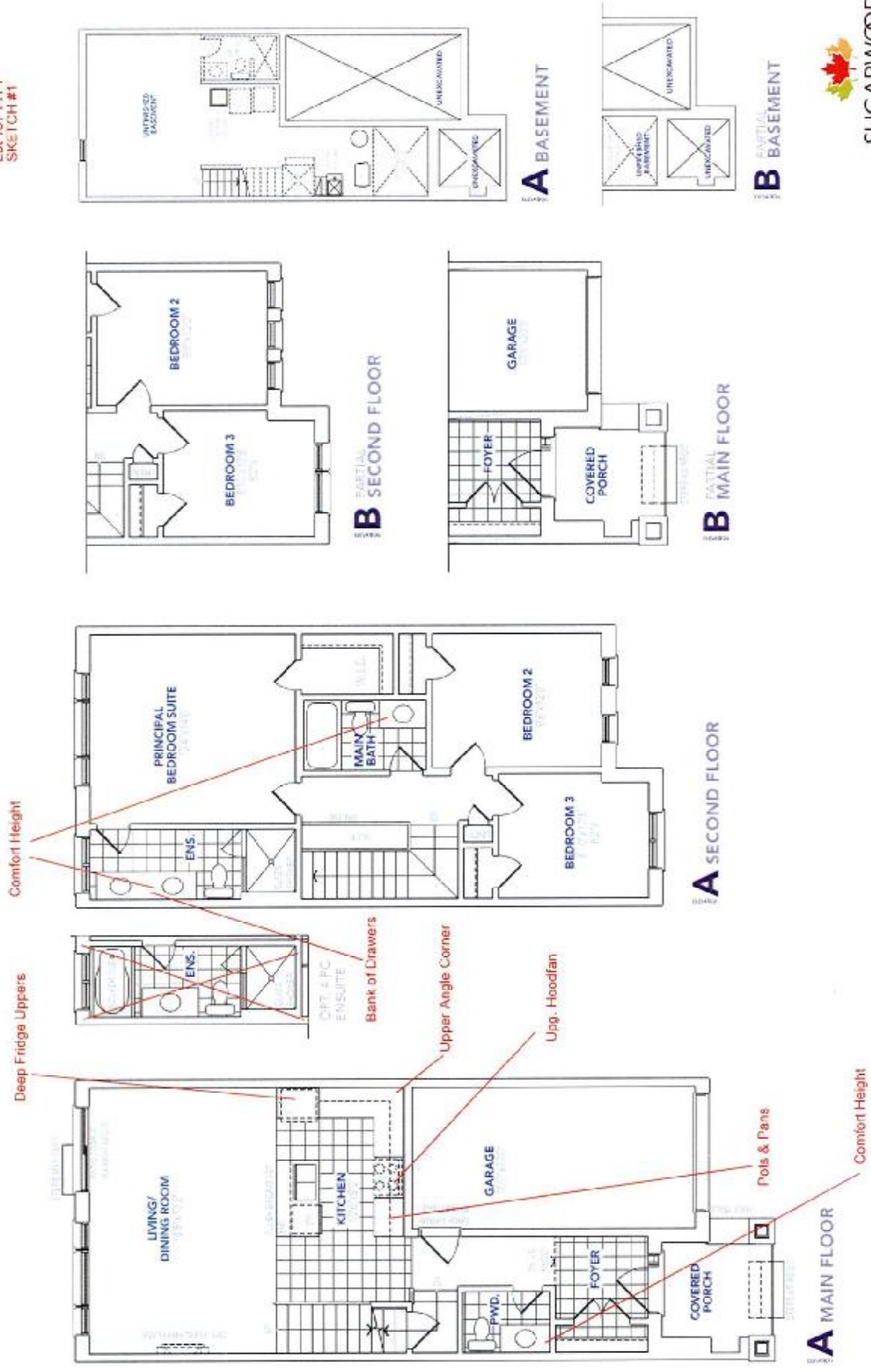
FIREPLACE

Inv.6605	1 - TO SUPPLY AND INSTALL OPT. ELEC. F/P	
Line 82426	Note:	
9Jun25 / 19Jun25		

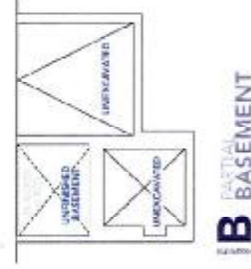
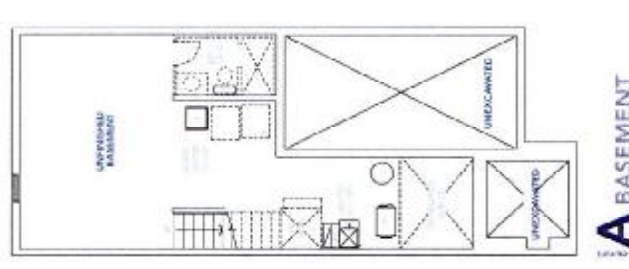
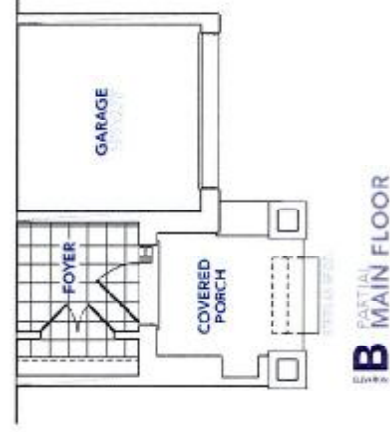
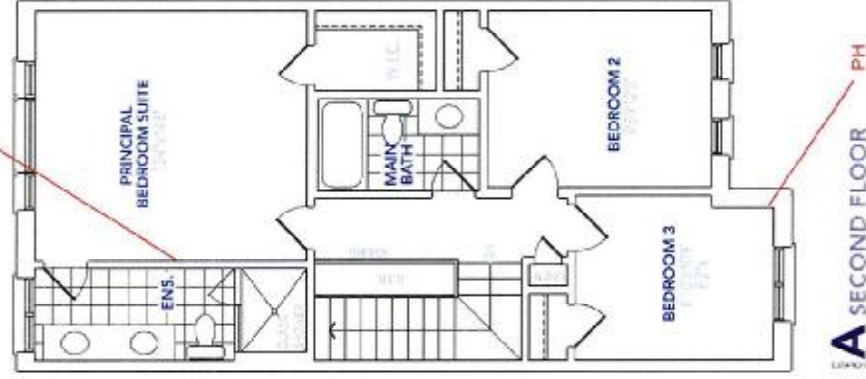
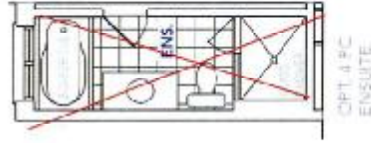
EXTRAS AS PER OFFER

Note:	
-------	--

Lot 187 PH 1  
SKETCH #1



PH TV



Do not install STD. Light, keep the switch an supply 2 potlights connected to std. switch



SUGARWOOD

[illegible]