

Lindsay 2017 Developments Inc. / Sugarwood

Lot/Unit: 186 Block 96 Phase/Building: 1 Model/Floor Plan: Pigeon Lake(2007)ElevB
Corner Opt 2nd-4Bed 2.5Bath

CABINETRY

Inv.6604	1 - To accomodate for upgraded hoodfan	
Line 82476	Note:	
9Jun25 / 20Jun25		

CABINETRY APPLIANCE - FRIDGE

Inv.6604	1 - 66CM DEEP FRIDGE ENCLOSURE - COUNTER DEPTH WITH NO WALLS - 2 66CM DEEP GABLES AND 1 66CM DEEP CABINET - THIS IS NOT A ZERO CLEARANCE ENCLOSURE. STANDARD HEIGHTS AND WIDTHS WILL BE USED. - CLASSIC SERIES	
Line 82482	Note:	
9Jun25 / 20Jun25		

CABINETRY BASE CABINETS

Inv.6604	1 - 45CM WIDE PULL-OUT DOOR BASE CABINET WASTE - RECYCLE CENTRE - 2 35L BINS - AVAILABLE ONLY WITH 45CM WIDE CABINET - CLASSIC SERIES	
Line 82480	Note:	
9Jun25 / 20Jun25		
Inv.6604	1 - POTS & PANS DRAWER - MINIMUM 60 CM - MAXIMUM 90 CM - SIZE SUBJECT TO FLOOR PLAN - CLASSIC SERIES	
Line 82481	Note:	
9Jun25 / 20Jun25		

CABINETRY HOOD FANS

Inv.6604	1 - HOOD FAN - PRO COLLECTION (SCB72230-NF) WALL MOUNT RANGE HOOD WITH 650 CFM FAN - 30 INCH -	
Line 82313	Note:	
9Jun25 / 20Jun25		

CABINETRY VANITY

Inv.6604	3 - INCREASE VANITY TO KITCHEN HEIGHT - 90CM HIGH - MAINTAINS VANITY DEPTH - CLASSIC SERIES in the PWD, MASTER AND MAIN BATHROOM	
Line 82483	Note:	
9Jun25 / 20Jun25		

ELECTRICAL

Inv.6604	1 - SEE SKETCH #2 FOR TV AND PHONE LOCATIONS	
Line 82417	Note:	
9Jun25 / 20Jun25		
Inv.6604	1 - To relocate the standard kitchen light over the kitchen island, See sketch #2	
Line 82418	Note:	
9Jun25 / 20Jun25		
Inv.6604	4 - To SUPPLY & INSTALL FOUR NON IC 4 in POT LIGHT C/W LED BULB AND WHITE TRIM on a separate switch in the kitchen, see sketch #2	
Line 82419	Note:	
9Jun25 / 20Jun25		



CONSTRUCTION SUMMARY

Lindsay 2017 Developments Inc. / Sugarwood

Lot/Unit: 186 Block 96 Phase/Building: 1 Model/Floor Plan: Pigeon Lake(2007)ElevB
Corner Opt 2nd-4Bed 2.5Bath

Inv.6604	4 - To SUPPLY & INSTALL FOUR NON IC 4 in POT LIGHT C/W LED BULB AND WHITE TRIM on a separate switch in the great room, see sketch #2	
Line 82420	Note:	
9Jun25 / 20Jun25		
Inv.6604	1 - To supply the elec. required for the optional F/P	
Line 82478	Note:	
9Jun25 / 20Jun25		
Inv.6604	1 - SUPPLY AND INSTALL AN ADDITIONAL BASIC RECEPTACLE (NOT DEDICATED) at 66" up from the floor over the F/P Mantle, see sketch #2	
Line 82479	Note:	
9Jun25 / 20Jun25		

FIREPLACE

Inv.6604	1 - TO SUPPLY AND INSTALL THE OPTIONAL FIREPLACE IN THE GREAT ROOM	
Line 82477	Note:	
9Jun25 / 20Jun25		

EXTRAS AS PER OFFER

Note:	
-------	--

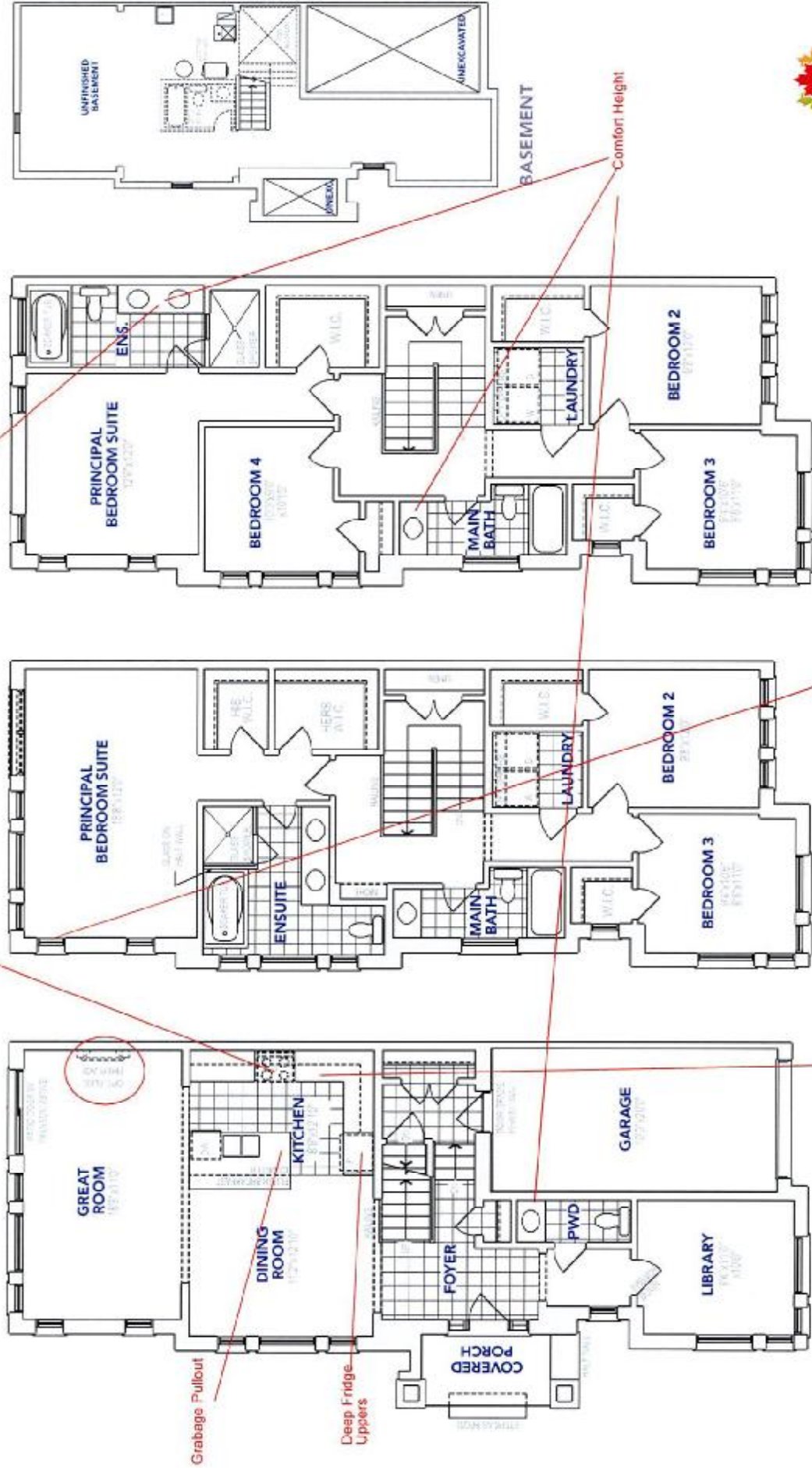
2007-CORNER

Pigeon Lake B

2024 sq. ft. / 3 & 4 Bedrooms / 2 ½ Bathrooms

KINGSILLEN GROUP INC.

Lot 186-PH1
SKETCH #1



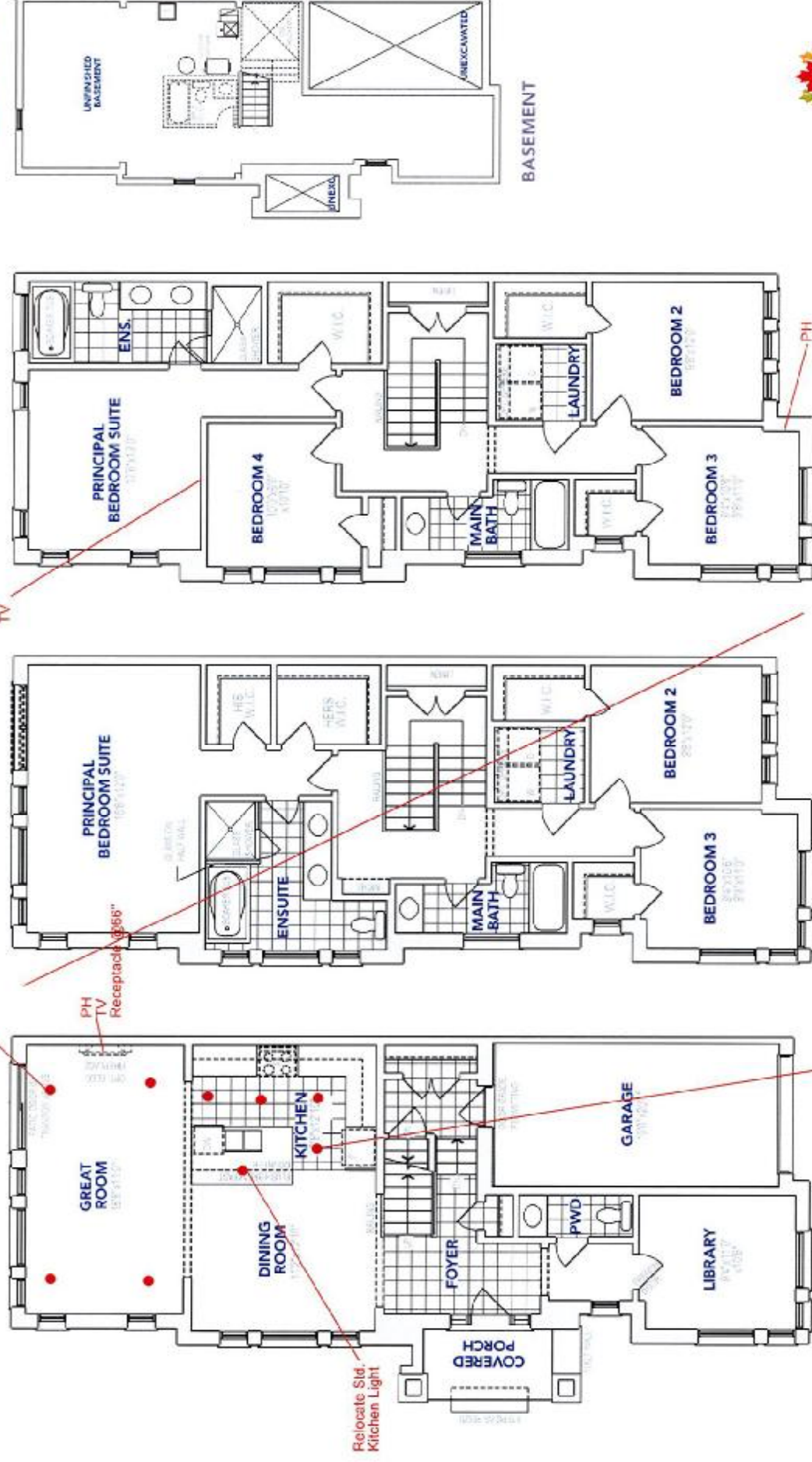
SUGARWOOD
Mainly, specifications and floor plans are subject to design change without notice. All areas and finished dimensions are approximate. Final construction documents are subject to change. © 2024 SUGARWOOD GROUP INC.

B MAIN FLOOR

B SECOND FLOOR

B OPTIONAL SECOND FLOOR

Lot 186-PH1
SKETCH #2



B MAIN FLOOR

B SECOND FLOOR

B CLEAR CHOICE
OPTIONAL
SECOND FLOOR

SUGARWOOD