



CONSTRUCTION SUMMARY

Lindsay 2017 Developments Inc. / Sugarwood

Lot/Unit: 75 Phase/Building: 2 Model/Floor Plan: Silver Lake (3702) Elev B 3Bed 2.5Bath

DOORS AND WINDOWS

Inv.6283 Line 79207 6Jun23 / 9Jun23	1 - TO SUPPLY AND INSTALL THE OPTIONAL SIDE DOOR.. SEE SKETCH #1 Note:	
Inv.6283 Line 79208 6Jun23 / 9Jun23	5 - TO SUPPLY AND INSTALL UPGRADED BASMENT WINDOWS ("36X24") IN LIEU OF THE STANDARD.. SEE SKETCH #2 Note:	

PLUMBING

Inv.6283 Line 79209 6Jun23 / 9Jun23	1 - TO SUPPLY AND INSTALL THE OPTIONAL 3-PC ROUGH-IN.. SEE SKETCH #2 Note:	
---	---	--

EXTRAS AS PER OFFER

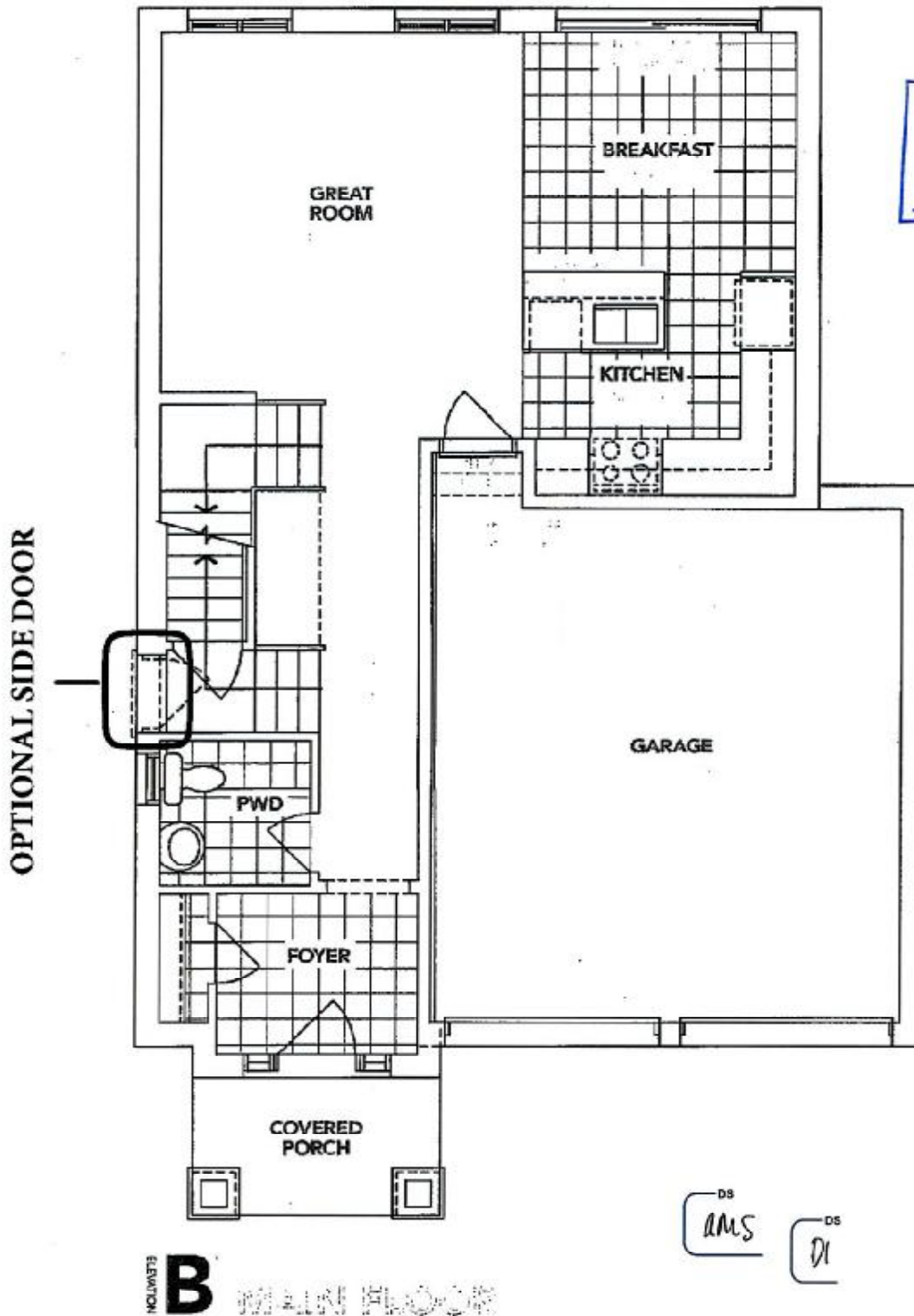
Lindsay PH. 2 Lot 75

SCHEDULE "B-1"

Floor Plan

Lot 75
Phase 2
Model: Silver Lake (3702) Elev B 3Bed 2.5Bath
Standard

SKETCH #1



REC'D/RECEIVED
12-06-2023

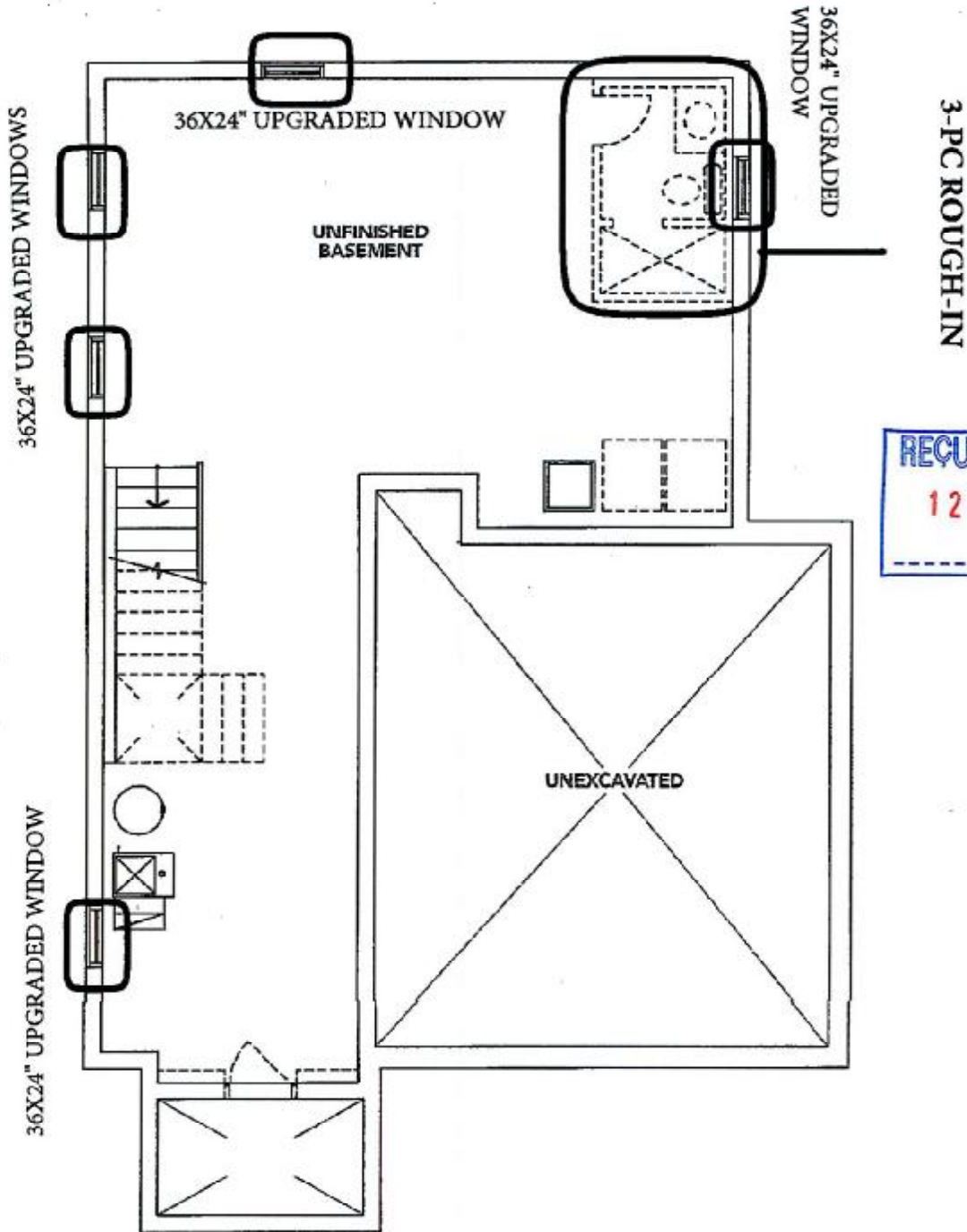
The floor plans and elevations shown are pre-construction plans and may be revised or improved as necessitated by architectural controls and the construction process. The measurements adhere to the rules and regulations of the TARIION Warranty Corporation's official method for the calculation of floor area. Materials, specifications and floor plans are subject to change without notice. All house renderings are artist's concept only. Actual usable floor space may vary from the stated floor area. All options shown are upgrades. E. & O. E.

Lindsay pt 2 lot 75

SCHEDULE "B-1"
Floor Plan

Lot 75
Phase 2
Model: Silver Lake (3702) Elev B 3Bed 2.5Bath
Standard

SKETCH #2



ELEVATION **B** BASEMENT ^{DS} AMS ^{DS} DI

The floor plans and elevations shown are pre-construction plans and may be revised or improved as necessitated by architectural controls and the construction process. The measurements adhere to the rules and regulations of the TARION Warranty Corporation's official method for the calculation of floor area. Materials, specifications and floor plans are subject to change without notice. All house renderings are artist's concept only. Actual usable floor space may vary from the stated floor area. All options shown are upgrades. E. & O. E.