

**KINGSMEN (THAMES) INC. / Havelock Corners (Kingsmen)**

**Lot/Unit: 62    Phase/Building: 5B    Model/Floor Plan: Robert (3604) Elev C 4 Bed - 2+1 Bath  
Corner**

**HEATING AND AIR CONDITIONING**

Inv.6162	<b>1</b> - As per schedule "PE": Vendor to install capped gas line ( Rough in only ) at rear of home for future BBQ location. Location to be finalized at vendors sole discretion.	
Line 78032	Note:	
14Apr23 / 18Apr23		
Inv.6162	<b>1</b> - As per schedule "PE": Vendor to supply & install air conditioning unit, sized accordingly, from vendors standard samples.	
Line 78033	Note:	
14Apr23 / 18Apr23		

**MISCELLANEOUS**

Inv.6162	<b>1</b> - To supply & install the optioanl Raised ceiling in the master bedroom....see sketch # 2	
Line 78034	Note:	
14Apr23 / 18Apr23		

**PLUMBING**

Inv.6162	<b>1</b> - To supply & install a stand up shower with a frameless glass panel and door includes shower pot light in lieu of the tub/shower combination in the main bathroom... see sketch # 2	
Line 78037	Note:	
14Apr23 / 18Apr23		
Inv.6162	<b>2</b> - To Raise the toe tester to approx. 28" + - up from the unfinished shower floor in the stand up shower in the master ensuite shower and main bathroom shower.	
Line 78038	Note:	
14Apr23 / 18Apr23		

**TRIM**

Inv.6162	<b>1</b> - To supply & install the 8’ interior standard style interior doors to the main floor area only where applicable..	
Line 78035	Note:	
14Apr23 / 18Apr23		

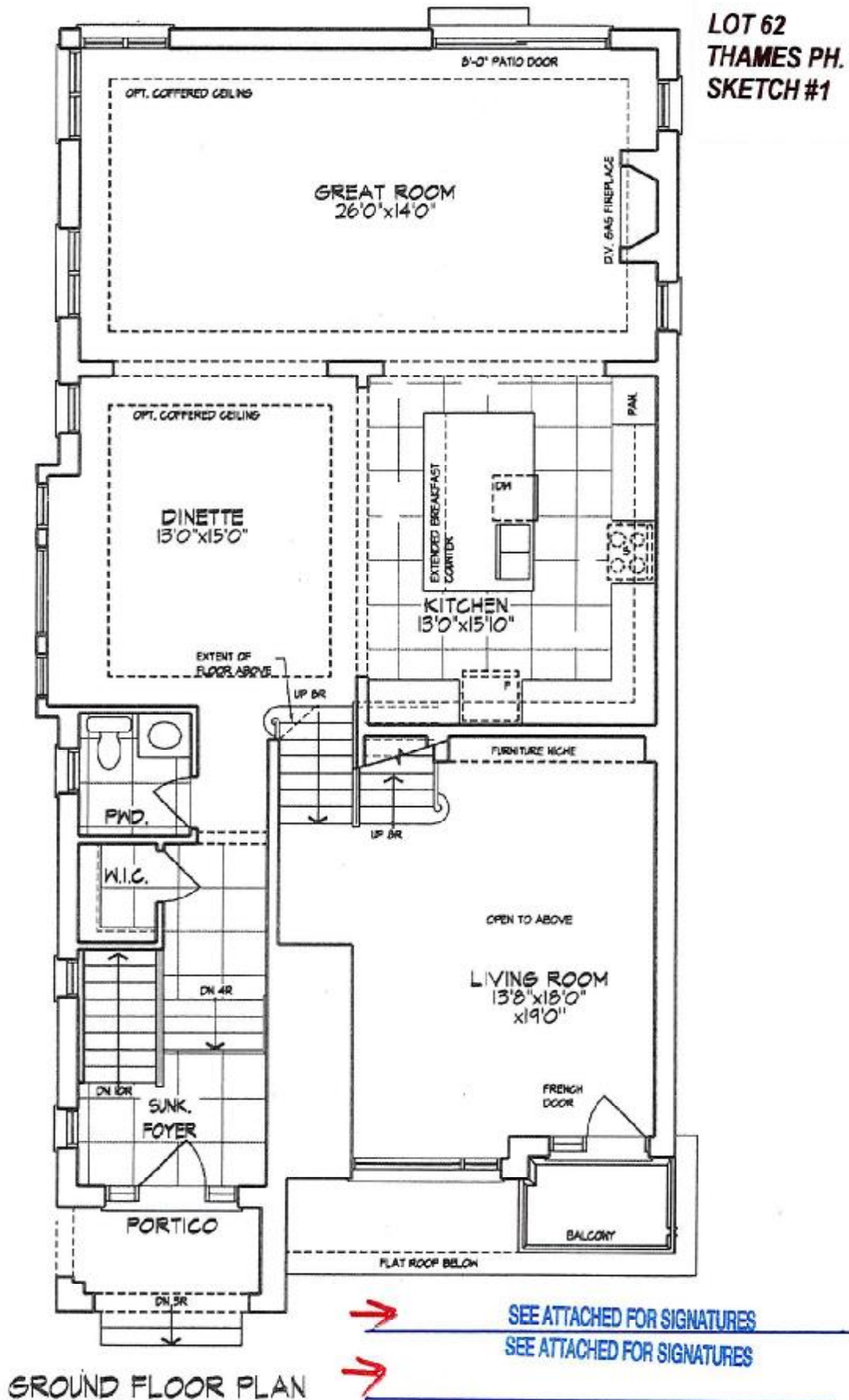
**EXTRAS AS PER OFFER**

5 FREE APPLIANCES ? STAINLESS STEEL FRONT - FRIDGE: STOVE AND DISHWASHER. WHITE WASHER AND DRYER (SUPPLIED ONLY, NOT INSTALLED, FROM BUILDERS STANDARD LINE). AN APPLIANCES VOUCHER WILL BE GIVEN BY OUR DECOR CONSULTANT AT THE TIME OF BOOKING YOUR COLOUR A <i>Worksheet</i> Note:	
VENDOR TO INSTALL CAPPED GAS LINE (ROUGH-IN ONLY) AT REAR OF HOME FOR FUTURE BBQ LOCATION. LOCATION TO BE FINALIZED AT VENDORS SOLE DISCRETION. <i>Worksheet</i> Note:	
VENDOR TO SUPPLY & INSTALL AIR CONDITIONING UNIT, SIZED ACCORDINGLY, FROM VENDORS STANDARD SAMPLES. <i>Worksheet</i> Note:	

APR 24 2023

SB-62

LOT 62  
THAMES PH. 5B  
SKETCH #1

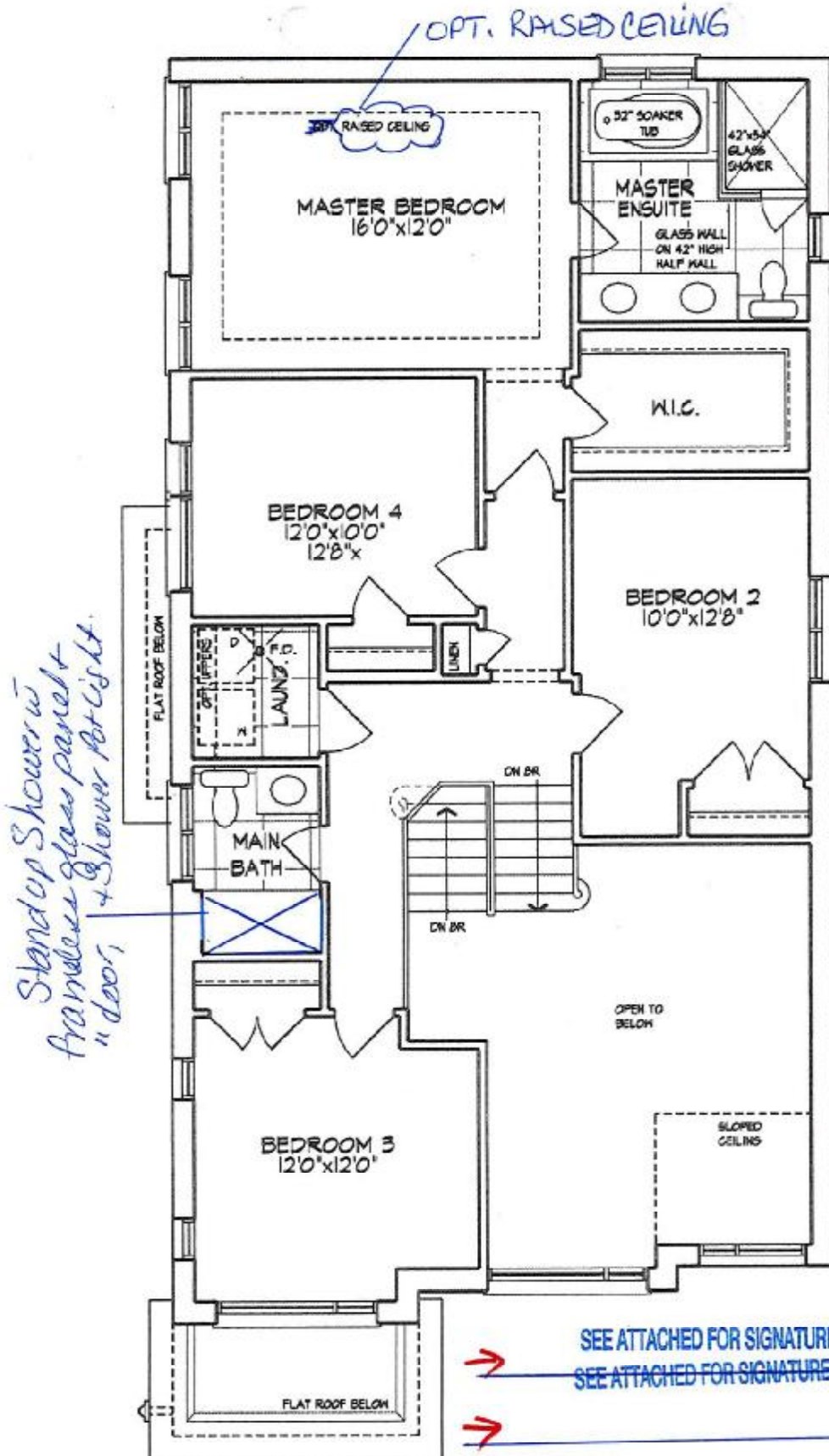


The floor plans and elevations shown are pre-construction plans and may be revised or improved as necessitated by architectural controls and the construction process. The measurements adhere to the rules and regulations of the TARIION Warranty Corporation's official method for the calculation of floor area. Materials, specifications and floor plans are subject to change without notice. All house renderings are artist's concept only. Actual usable floor space may vary from the stated floor area. All options shown are upgrades. E. & O. E.

APR 24 2023

5B-62

LOT 62  
THAMES PH. 5B  
SKETCH #2



SECOND FLOOR PLAN

The floor plans and elevations shown are pre-construction plans and may be revised or improved as necessitated by architectural controls and the construction process. The measurements adhere to the rules and regulations of the TARION Warranty Corporation's official method for the calculation of floor area. Materials, specifications and floor plans are subject to change without notice. All house renderings are artist's concept only. Actual usable floor space may vary from the stated floor area. All options shown are upgrades. E. & O. E.

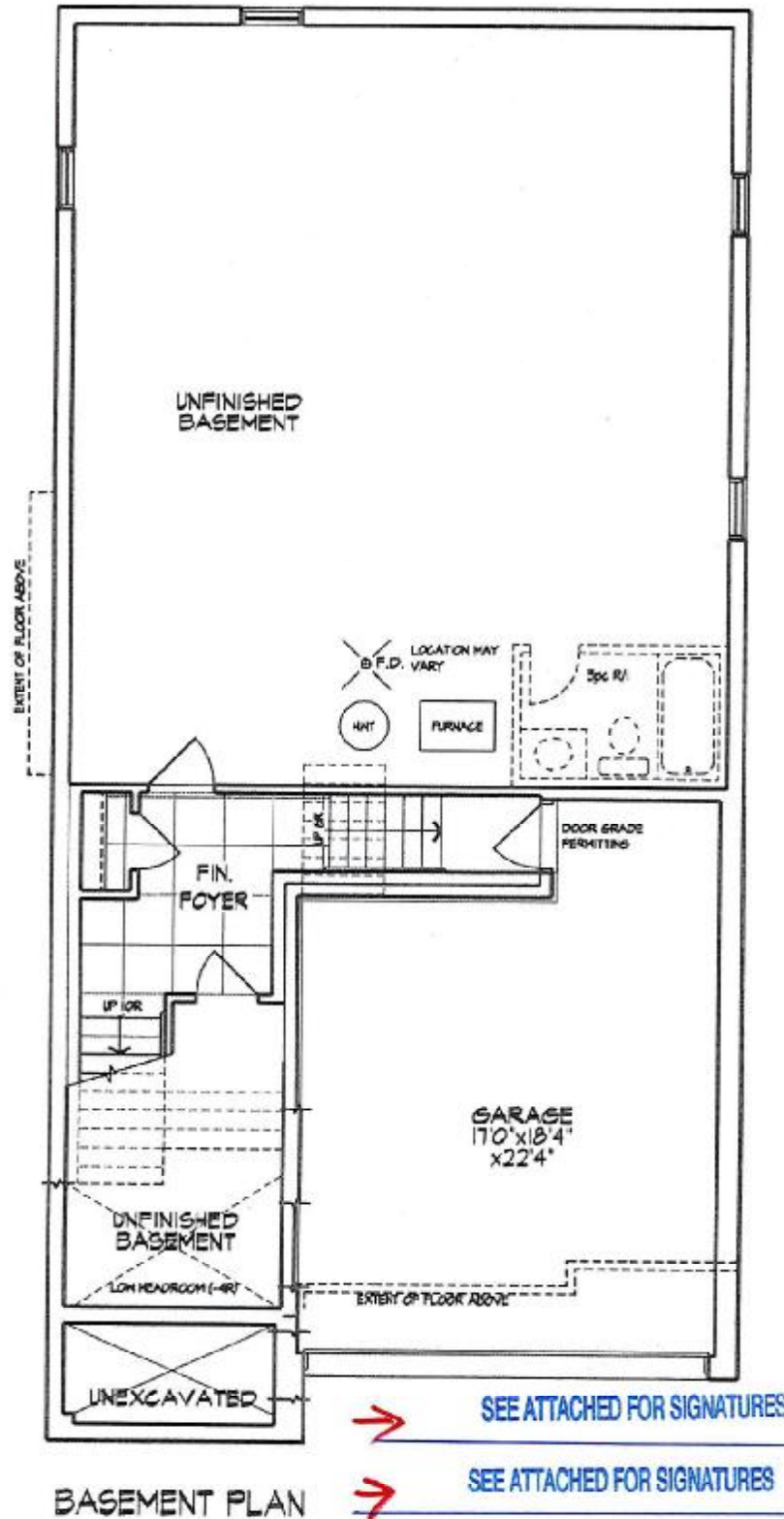


**SCHEDULE "B-1"**  
**Floor Plan**

APR 24 2023

5B-62  
Lot 62  
Phase 5B  
Model: Robert (3604) Elev C 4 Bed - 2+1 Bath Corner  
Corner Corner

**LOT 62**  
**THAMES PH. 5B**  
**SKETCH #3**



The floor plans and elevations shown are pre-construction plans and may be revised or improved as necessitated by architectural controls and the construction process. The measurements adhere to the rules and regulations of the TARION Warranty Corporation's official method for the calculation of floor area. Materials, specifications and floor plans are subject to change without notice. All house renderings are artist's concept only. Actual usable floor space may vary from the stated floor area. All options shown are upgrades. E. & O. E.