



CONSTRUCTION SUMMARY

Lindsay 2017 Developments Inc. / Sugarwood

Lot/Unit: 71 Phase/Building: 1 Model/Floor Plan: Buckhorn Lake (3704) Elev A 4Bed
2.5Bath

DOORS AND WINDOWS

Inv.5976	2 - To supply and install basement windows sized 36x24" in lieu of the standard size.. see sketch #1 for details	
Line 76535	Note: IF THE SITE IS UNABLE TO ACCOMODATE THIS UPGRADE THE PURCHASER WILL BE CREDITED ON CLOSING	
10Nov22 / 17Nov22		
Inv.5976	1 - To supply and install the optional side door to the home (grade permitting).. see sketch #1 for details	
Line 76565	Note:	
10Nov22 / 17Nov22		

MISCELLANEOUS

PLUMBING

Inv.5976	2 - To increase the toe tester in the master ensuite shower and main bathroom shower to approx. 3' 8" up from unfinished floor, in lieu of the standard height	
Line 76536	Note:	
10Nov22 / 17Nov22		
Inv.5976	1 - To change the main bathroom tub/shower combination to a standup shower with a framless glass panel (including a potlight).. see sketch #1 for details	
Line 76564	Note:	
10Nov22 / 17Nov22		

EXTRAS AS PER OFFER

Lindsay PH. 1 Lot 71

SCHEDULE "B-1"
Floor Plan

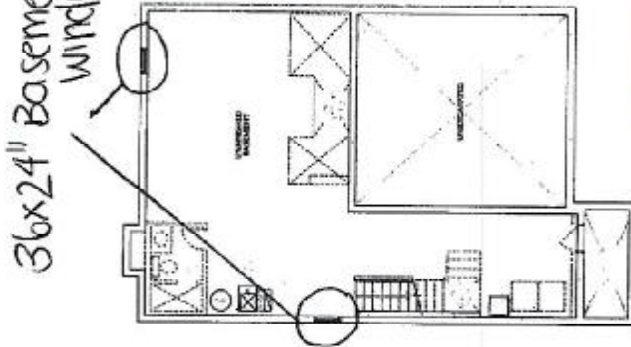
Model: Buckhorn Lake (3704) Elev A 4Bed 2.5Bath
Standard

Lot 71
Phase 1

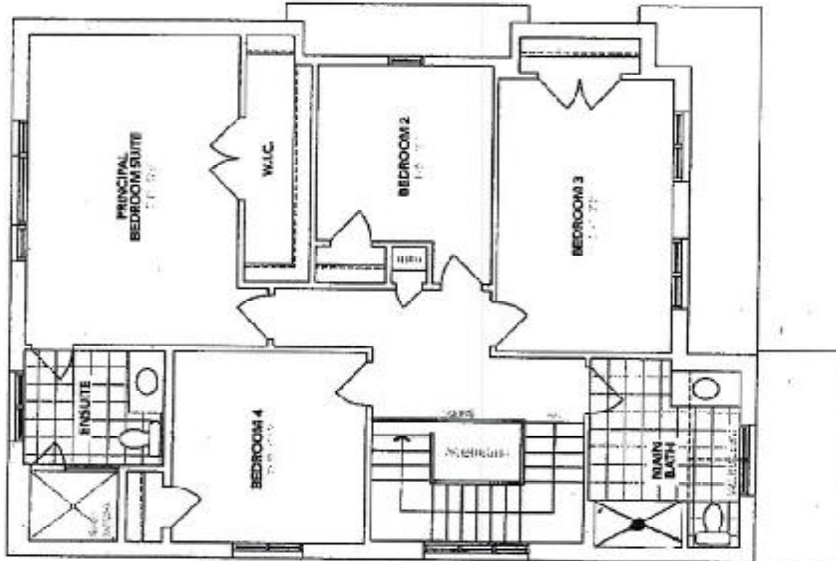


Sketch #1

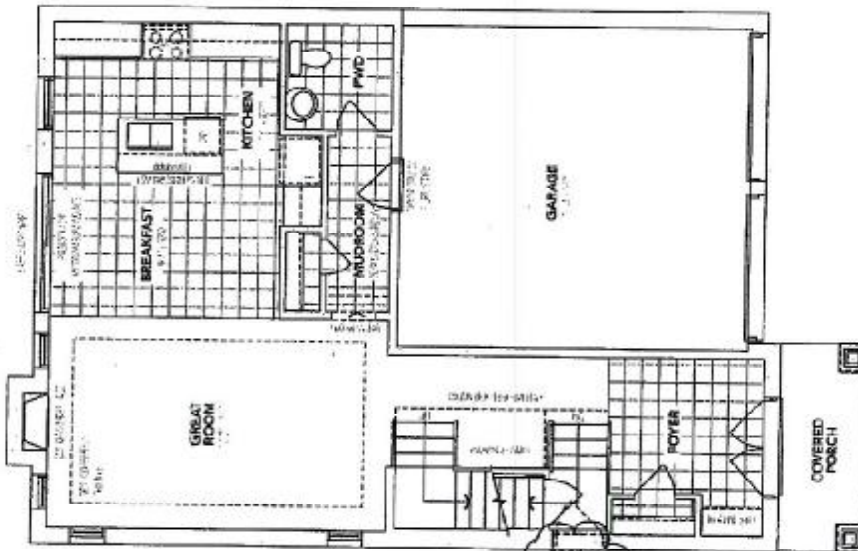
36x24" Basement
Windows



A BASEMENT



A SECOND FLOOR



A MAIN FLOOR

Side Door
(grade permitting)

The floor plans and elevations shown are pre-construction plans and may be revised or improved as necessitated by architectural controls and the construction process. The measurements adhere to the rules and regulations of the TARIION Warranty Corporation's official method for the calculation of floor area. Materials, specifications and floor plans are subject to change without notice. All house renderings are artist's concept only. Actual usable floor space may vary from the stated floor area. All options shown are upgrades. E. & O. E.

Initials: 
