



CONSTRUCTION SUMMARY

Lindsay 2017 Developments Inc. / Sugarwood

Lot/Unit: 27 Phase/Building: 1 Model/Floor Plan: Buckhorn Lake (3704) Elev B 4Bed 2.5Bath

DOORS AND WINDOWS

Inv.5776	1 - To supply and install the optional side door to the main floor as per plan.. see sketch #1 for details	
Line 73733	Note:	
31Aug22 / 1Sep22		
Inv.5776	2 - To supply and install upgraded basment windows, sized 36x24" in lieu of the standard size.. see sketch #1 for details	
Line 73734	Note: IF UNABLE TO ACCOMODATE, THE PURCHASER WILL BE CREDITED ON CLOSING.	
31Aug22 / 1Sep22		

MISCELLANEOUS

Inv.5776	1 - To increase the standard basement ceiling height by approx. 1' in lieu of the standard height. The purchaser is aware the height may vary due to HVAC, Plumbing, and Electrical drops.	
Line 73736	Note: THIS UPGRADE IS TO BE COMPLETED BY THE EXCAVATING AND FORMING COMPANY.	
31Aug22 / 1Sep22		IF UNABLE TO ACCOMODATE, THE PURCHASER WILL BE CREDITED ON CLOSING.

EXTRAS AS PER OFFER

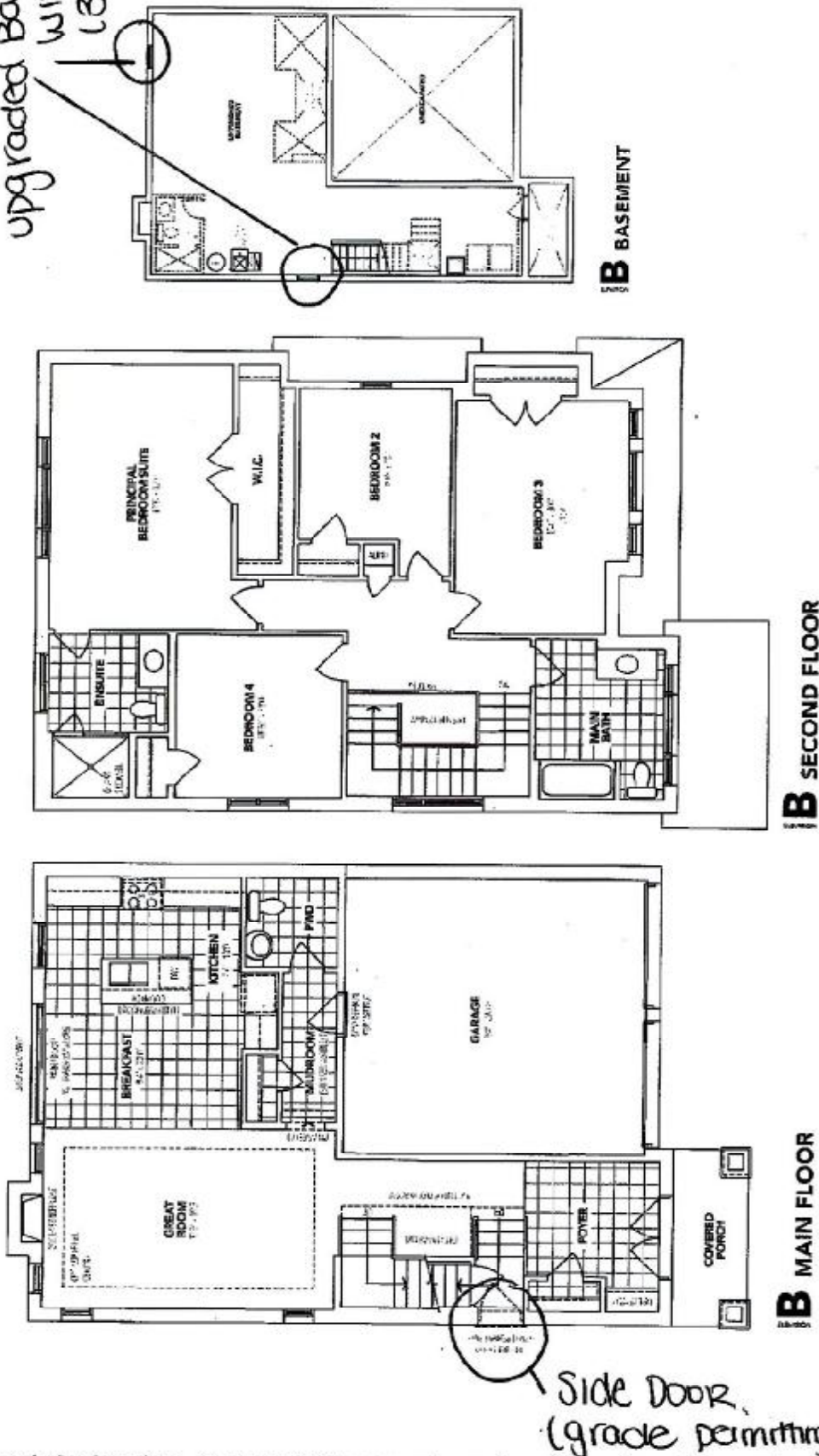
Lindsay PH.1 Lot 27

SCHEDULE "B-1"
Floor Plan

Lot 27
Phase 1
Model: Buckhorn Lake (3704) Elev B 4Bed 2.5Bath
Standard

Sketch #1

upgraded Basement
windows
(36" x 24")



The floor plans and elevations shown are pre-construction plans and may be revised or improved as necessitated by architectural controls and the construction process. The measurements adhere to the rules and regulations of the TARIION Warranty Corporation's official method for the calculation of floor area. Materials, specifications and floor plans are subject to change without notice. All house renderings are artist's concept only. Actual usable floor space may vary from the stated floor area. All options shown are upgrades. E. & O. E.



DS
ML

Initials
DS
ML