

KINGSMEN (THAMES) INC. / Havelock Corners (Kingsmen)

Lot/Unit: 17 Phase/Building: 5A Model/Floor Plan: Andrew (3603) Elev A 4 Bed - 2+1 Bath

COUNTER TOP

| | | |
|-----------------|--|--|
| Inv.5377 | 1 - As per schedule "PE": Vendor to include level 1, 2cm. quartz in all bathrooms, as per plan, in lieu of the included laminate counter tops. Selections to be made from builders standard samples. | |
| Line 69713 | Note: | |
| 8Feb22 / 8Feb22 | | |

HEATING AND AIR CONDITIONING

| | | |
|-----------------|---|--|
| Inv.5377 | 1 - As per schedule "PE": Vendor to install capped gas line (rough in only) at rear of home for future BBQ location. Location to be finalized at vendors sole discretion. | |
| Line 69712 | Note: | |
| 8Feb22 / 8Feb22 | | |

MISCELLANEOUS

| | | |
|-----------------|--|--|
| Inv.5377 | 1 - To supply & instal the optional side door if grade permits... see sketch # 1 | |
| Line 69714 | Note: | |
| 8Feb22 / 8Feb22 | | |

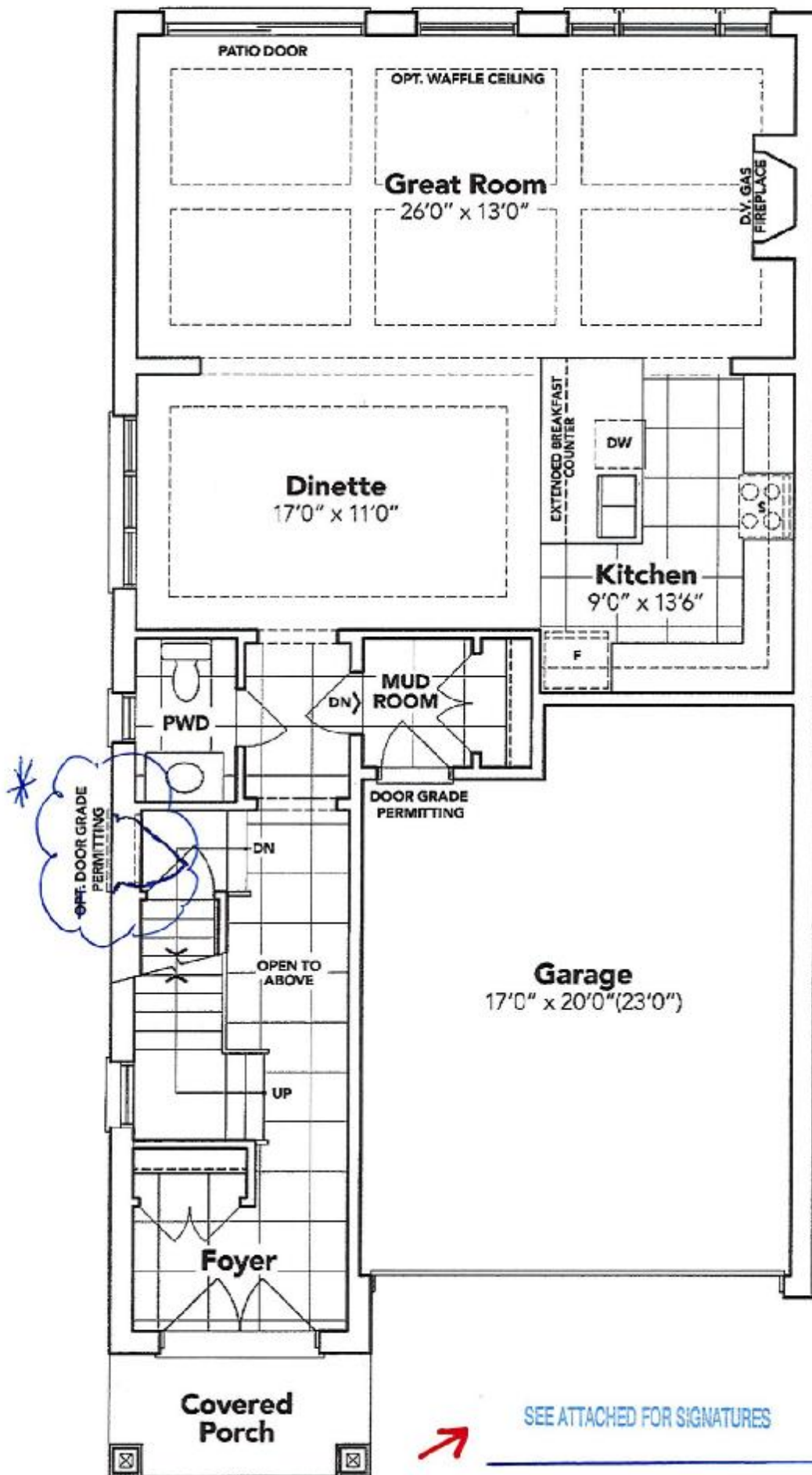
EXTRAS AS PER OFFER

| | |
|--|--|
| 5 FREE APPLIANCES – STAINLESS STEEL FRONT - FRIDGE: STOVE AND DISHWASHER. WHITE WASHER AND DRYER (SUPPLIED ONLY, NOT INSTALLED, FROM BUILDERS STANDARD LINE). AN APPLIANCES VOUCHER WILL BE GIVEN BY OUR DECOR CONSULTANT AT THE TIME OF BOOKING YOUR COLOUR A <i>Worksheet</i> Note: | |
| VENDOR TO INSTALL CAPPED GAS LINE (ROUGH-IN ONLY) AT REAR OF HOME FOR FUTURE BBQ LOCATION. LOCATION TO BE FINALIZED AT VENDORS SOLE DISCRETION. <i>Worksheet</i> Note: | |
| VENDOR TO SUPPLY & INSTALL AIR CONDITIONING UNIT, SIZED ACCORDINGLY, FROM VENDORS STANDARD SAMPLES. <i>Worksheet</i> Note: | |
| VENDOR TO INCLUDE LEVEL 1, 2CM QUARTZ IN ALL BATHROOMS, AS PER PLAN, IN LIEU OF THE INCLUDED LAMINATE COUNTER TOPS. SELECTIONS TO BE MADE FROM BUILDERS STANDARD SAMPLES. <i>Worksheet</i> Note: | |

SCHEDULE "B-1"
Floor Plan

Lot 17
Phase 5A
Model: Andrew (3603) Elev A 4 Bed - 2+1 Bath
Standard

Sketch
#1



SEE ATTACHED FOR SIGNATURES

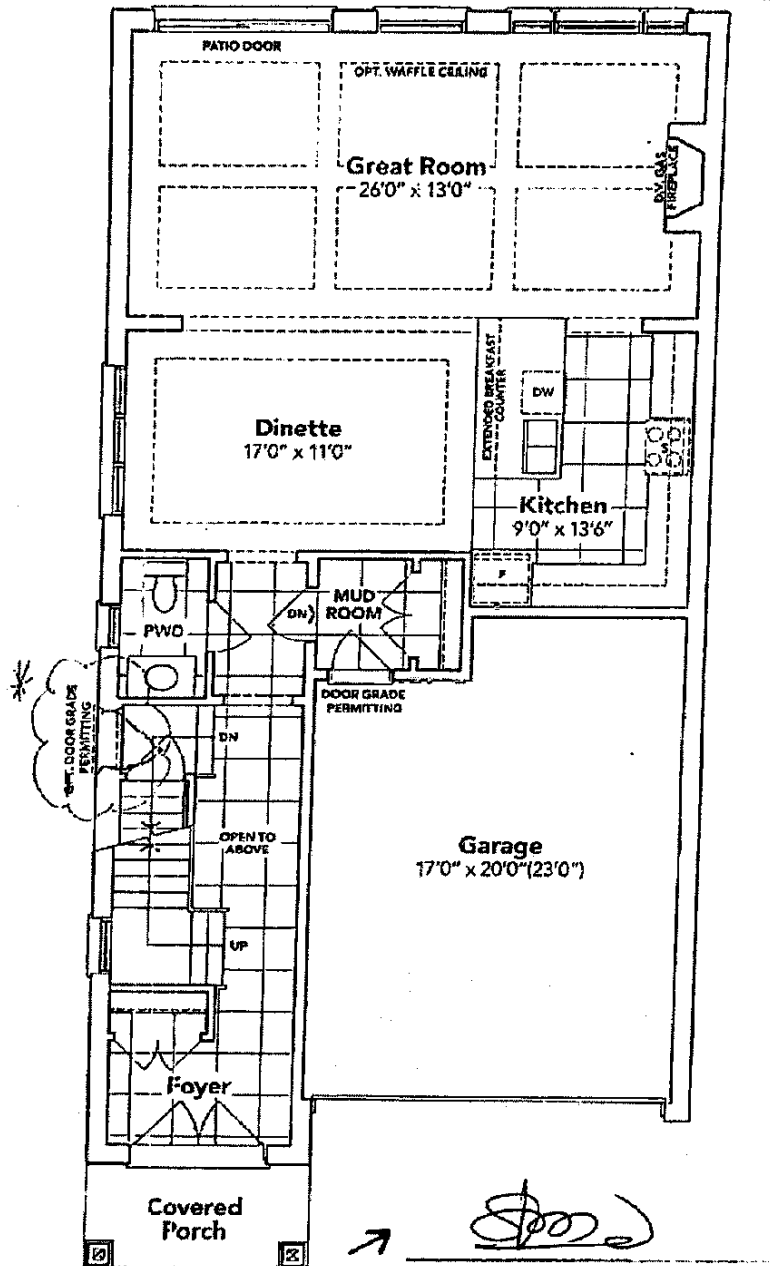
GROUND FLOOR EL. A

The floor plans and elevations shown are pre-construction plans and may be revised or improved as necessitated by architectural controls and the construction process. The measurements adhere to the rules and regulations of the TARION Warranty Corporation's official method for the calculation of floor area. Materials, specifications and floor plans are subject to change without notice. All house renderings are artist's concept only. Actual usable floor space may vary from the stated floor area. All options shown are upgrades. E. & O. E.

SCHEDULE "B-1"
Floor Plan

Lot 17
Phase 5A
Model: Andrew (3633) Elev A 4 Bed - 2+1 Bath
Standard

Sketch
4/



GROUND FLOOR EL. A

The floor plans and elevations shown are pre-construction plans and may be revised or improved as necessitated by architectural controls and the construction process. The measurements adhere to the rules and regulations of the TALLON Warranty Corporation's official method for the calculation of floor area. Materials, specifications and floor plans are subject to change without notice. All house markings are artist's concept only. Actual usable floor space may vary from the stated floor area. All options shown are upgrades. E. & D. E.

indiv_614.rpt 22Sep16

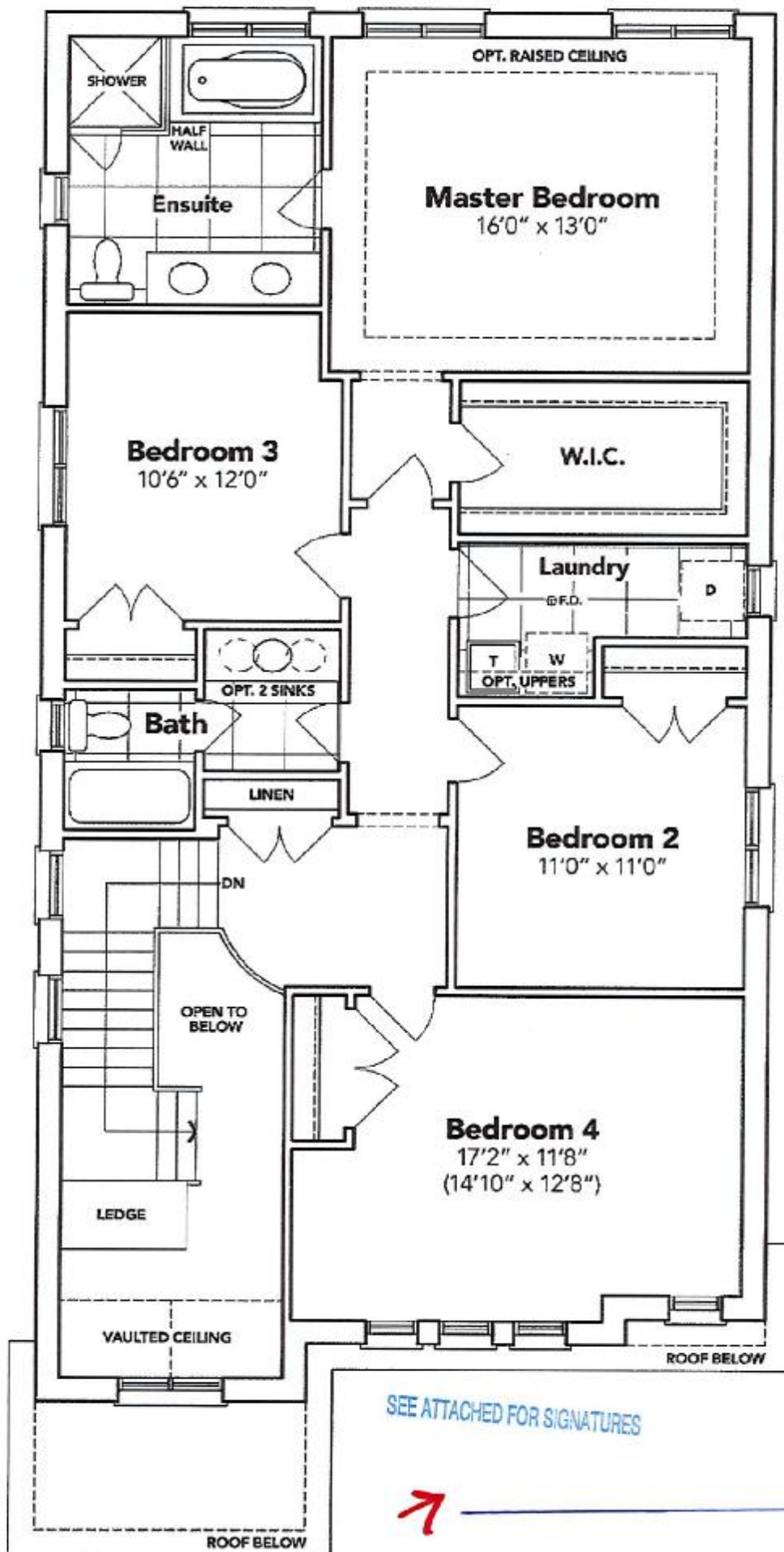
SCHEDULE "B-1" - Page 3 of 3

Initials

SCHEDULE "B-1"
Floor Plan

Lot 17
Phase 5A
Model: Andrew (3603) Elev A 4 Bed - 2+1 Bath
Standard

Sketch
#2

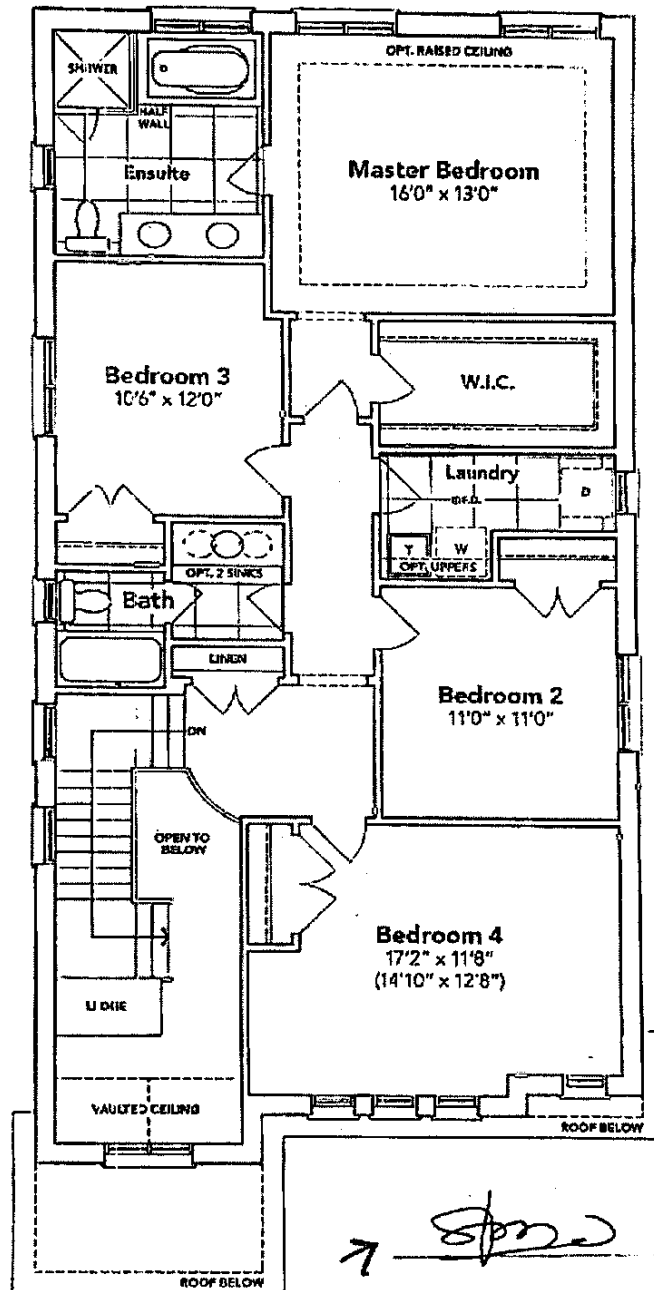


SECOND FLOOR EL. A

The floor plans and elevations shown are pre-construction plans and may be revised or improved as necessitated by architectural controls and the construction process. The measurements adhere to the rules and regulations of the TARION Warranty Corporation's official method for the calculation of floor area. Materials, specifications and floor plans are subject to change without notice. All house renderings are artist's concept only. Actual usable floor space may vary from the stated floor area. All options shown are upgrades. E. & O. E.

SCHEDULE "B-1"
Floor Plan

Model: Andrew (3602) Elev A 4-Bpd - 2+1 Bath
Lot 17
Phase 3A
Standard



SECOND FLOOR EL. A

The floor plans and elevations shown are pre-construction plans and may be revised or improved as necessitated by architectural constraints and the construction process. The measurements adhere to the rules and regulations of the TARIION Warranty Corporation's Official method for the calculation of floor area. Materials, specifications and floor plans are subject to change without notice. All house renderings are artist's concept only. Actual usable floor space may vary from the stated floor area. All options shown are upgrades.
E. & J.E.

SCHEDULE "B-1" - Page 2 of 3

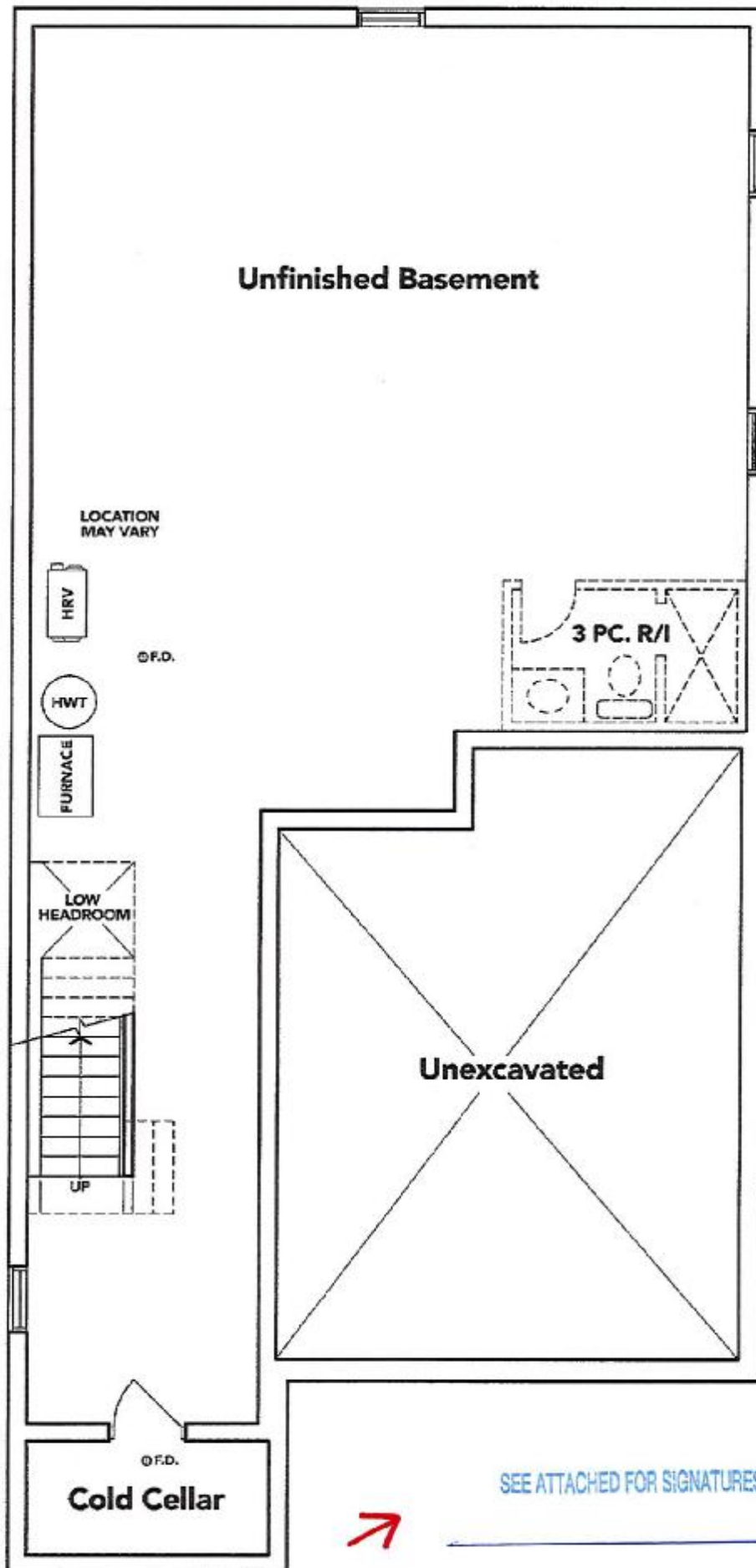
Initials *[Signature]*

014.rpt 22Sep16

SCHEDULE "B-1"
Floor Plan

Lot 17
Phase 5A
Model: Andrew (3603) Elev A 4 Bed - 2+1 Bath
Standard

sketch
#3



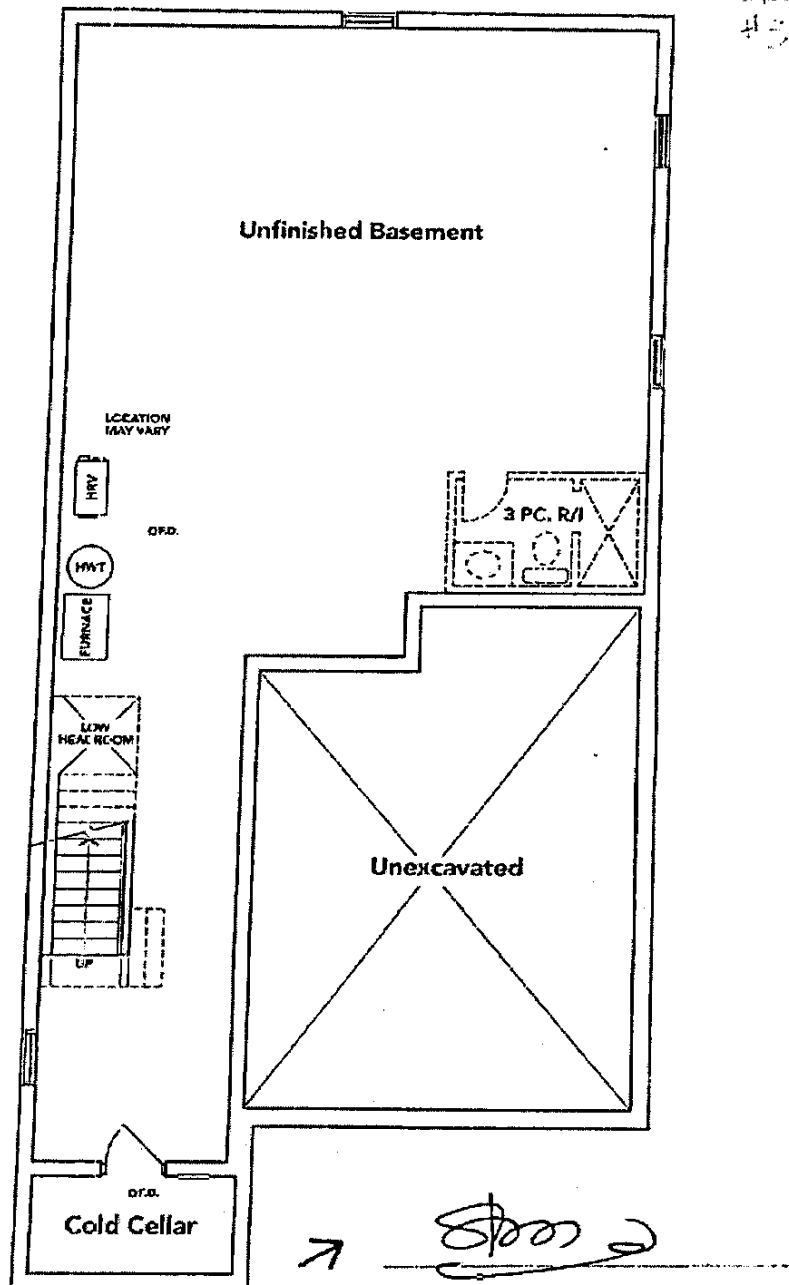
BASEMENT EL. A

The floor plans and elevations shown are pre-construction plans and may be revised or improved as necessitated by architectural controls and the construction process. The measurements adhere to the rules and regulations of the TARION Warranty Corporation's official method for the calculation of floor area. Materials, specifications and floor plans are subject to change without notice. All house renderings are artist's concept only. Actual usable floor space may vary from the stated floor area. All options shown are upgrades. E. & O. E.

SCHEDULE "B-1"
Floor Plan

Lot 17
Phase 5A
Modul: Andrew (3503) Elev A 4 Bed - 2+1 Bath
Standard

Sketch
4/3



BASEMENT EL. A

The floor plans and elevations shown are pre-construction plans and may be revised or improved as necessitated by architectural controls and the construction process. The measurements adhere to the rules and regulations of the TARION Warranty Corporation's official method for the calculation of floor area. Materials, specifications and floor plans are subject to change without notice. All house workings are artist's concept only. Actual usable floor space may vary from the stated floor area. All options shown are upgrades. E.A.D.E.

SCHEDULE "B-1" - Page 1 of 3

Initials: [Signature]

1312_014.rpt 22Sep16