

Kingsmen (Islington) Inc. / 9560 Islington

Lot/Unit: L147 Block 4 Phase/Building: 1 Model/Floor Plan: The Amalfi - 2
Bed+Den(C3-2B)

ELECTRICAL

Inv.5231 Line 68545 9Dec21 / 10Dec21	1 - To supply & install the standard T.V. rough in in Living room and Master bedroom... see sketch # 1 & # 2 Note:	
Inv.5231 Line 68546 9Dec21 / 10Dec21	1 - To supply & install the standard Phone rough in the living room, master bedroom and den area..see sketch # 1 & # 2 Note:	
Inv.5231 Line 68547 9Dec21 / 10Dec21	1 - To supply & install the standard ceiling lights to the hallway infront of the front closet and powder room and in the dining room area.. see sketch # 1 Note:	
Inv.5231 Line 68548 9Dec21 / 10Dec21	1 - Relocate the std. ceiling light in the kitchen over to the island in the kitchen... see sketch # 1 Note:	
Inv.5231 Line 68549 9Dec21 / 10Dec21	1 - To supply & install NINE slim LED Down pot lights (AFR4-0930-WH) in the kitchen on a sep. switch ... see sketch # 1 Note:	
Inv.5231 Line 68550 9Dec21 / 10Dec21	1 - To supply & install FOUR slim LED Down pot lights (AFR4-0930-WH) in the living room area on a sep. switch ... see sketch # 1 Note:	

EXTRAS AS PER OFFER

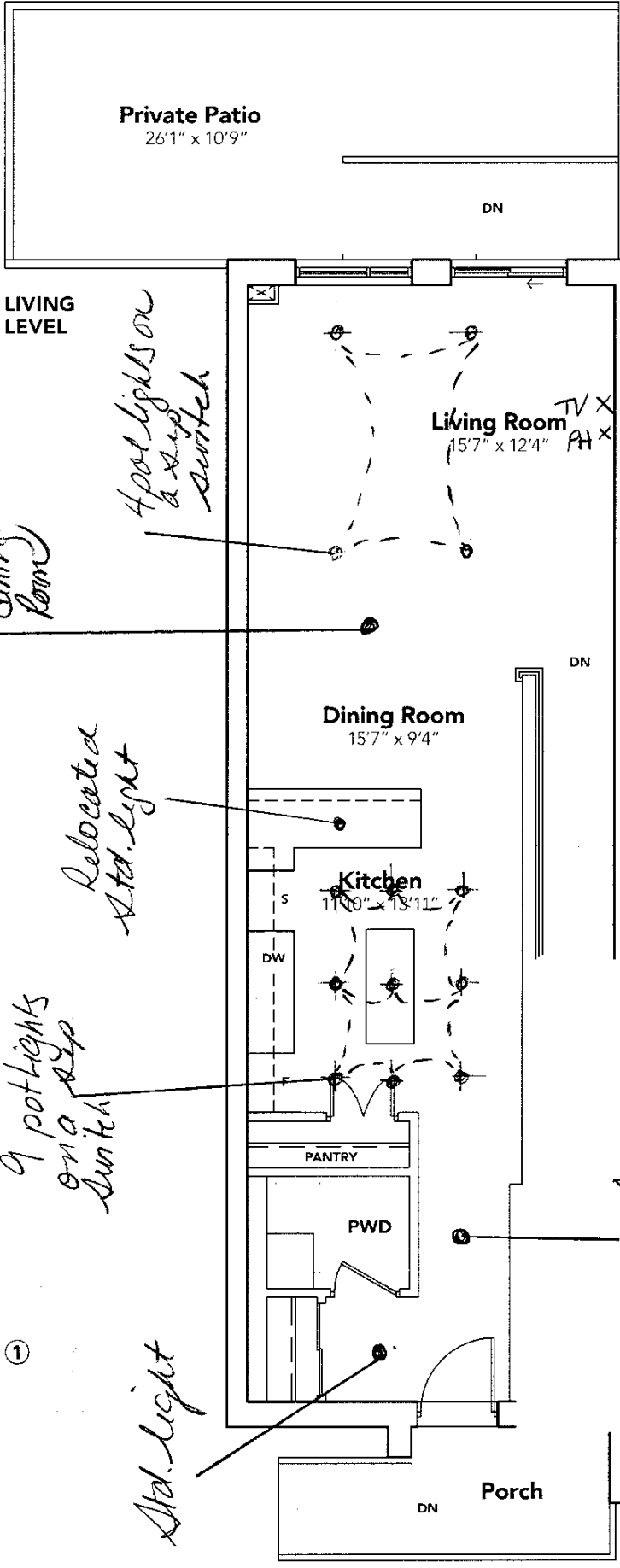
Note:	
-------	--

Unit L147 Block 4
"9560 Islington"
Sketch # 1

9560
ISLINGTON

C3 THE AMALFI
COURTYARD COLLECTION

1680 SQ. FT.



③

④

①

②

BLOCK 4

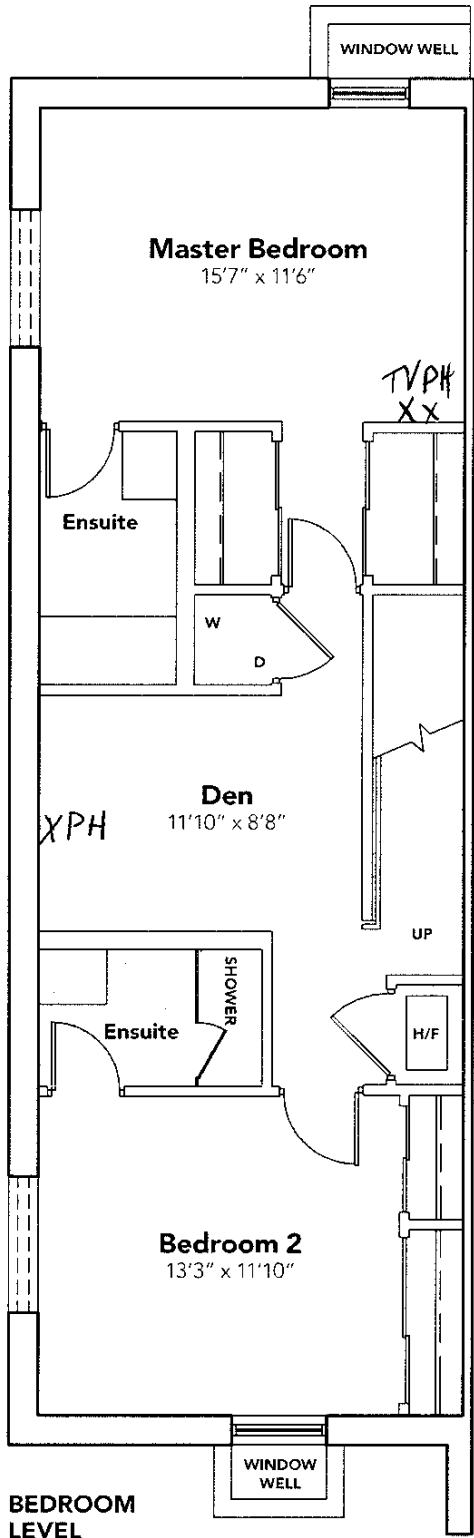
As shown, figures, sizes, specifications and information are subject to change without notice. All areas and stated dimensions are approximate. Measurements are actual inside finish space, including any separate through-trays, tray, floor, stairs, etc. All areas are actual dimensions. © 2011

Unit L147 Block 4
"9560 Islington"
Sketch # 2

9560
ISLINGTON

THE AMALFI
COURTYARD COLLECTION

1680 SQ. FT.



KINGSLEY
HILL

All prices, figures and specifications are subject to change without notice. All areas and stated dimensions are approximate. Mechanical and electrical rough-in space, including areas for future installation of equipment, is shown in the plan.