

Kingsmen (Thames) Inc. / Havelock Corners (Kingsmen)

Lot/Unit: 110    Phase/Building: 4B    Model/Floor Plan: Spencer (4204) Elev C 4 Bed - 4+1 Bath

CABINETRY

Inv.5087	1 - To increase stove opening from 30" to 36"..	
Line 66618	Note:	
18Aug21 / 19Aug21		
Inv.5087	1 - To accomodate quartz countertop for 36" cooktop	
Line 66625	Note:	
18Aug21 / 19Aug21		

CABINETRY APPLIANCE - FRIDGE

Inv.5087	1 - To supply and install 66CM DEEP FRIDGE ENCLOSURE - COUNTER DEPTH WITH - 1 WALL - 1 66CM DEEP GABLE AND 1 66CM DEEP CABINET - THIS IS NOT A ZERO CLEARANCE ENCLOSURE. STANDARD HEIGHTS AND WIDTHS WILL BE USED. - CLASSIC SERIES see sketch #1	
Line 66622	Note: See attached for fridge spec's	
18Aug21 / 19Aug21		

CABINETRY BASE CABINETS

Inv.5087	1 - To supply and install a 45CM WIDE PULL-OUT DOOR BASE CABINET WASTE - RECYCLE - 2 35L BINS - AVAILABLE ONLY WITH 45CM WIDE CABINET - CLASSIC SERIES.. see sketch #1	
Line 66624	Note:	
18Aug21 / 19Aug21		

CABINETRY MICROWAVE OVEN STOVE COOKTOP

Inv.5087	1 - To supply and install BUILT-IN TALL APPLIANCE CABINET WITH DRAWER - S BELOW FOR PANEL-MOUNT - PROUD - OR TRIM KIT INSTALLATIONS - TRIM KIT REQUIRED - SUPPLY ALL SPECS AND INSTALLATION GUIDES - COUNTER DEPTH - CLASSIC SERIES.. see sketch #1	
Line 66619	Note:	
18Aug21 / 19Aug21		
Inv.5087	1 - To accomodate for the future 36" COOKTOP CABINET WITH FALSE TOP DRAWER AND POTS AND PANS DRAWERS BELOW - SUPPLY SPECS - LAMINATE COUNTER SHOULD BE CLEAN CUT - SEE 01F - CLASSIC SERIES..see sketch #1	
Line 66620	Note:	
18Aug21 / 19Aug21		

CABINETRY PANTRY

Inv.5087	1 - To supply and install a PANTRY 66 CM DEEP IN LIEU OF UPPER - BASE - COUNTER DEPTH - - CLASSIC SERIES.. see sketch #1	
Line 66623	Note:	
18Aug21 / 19Aug21		

CABINETRY VANITY

Inv.5087	1 - To INCREASE VANITY TO KITCHEN HEIGHT - 90CM HIGH - MAINTAINS VANITY DEPTH - CLASSIC SERIES in the Powder Room	
Line 66626	Note:	
18Aug21 / 19Aug21		

Kingsmen (Thames) Inc. / Havelock Corners (Kingsmen)

Lot/Unit: 110    Phase/Building: 4B    Model/Floor Plan: Spencer (4204) Elev C 4 Bed - 4+1 Bath

Inv.5087	1 - To INCREASE VANITY TO KITCHEN HEIGHT - 90CM HIGH - MAINTAINS VANITY DEPTH - CLASSIC SERIES in Ensuite #3	
Line 66627	Note:	
18Aug21 / 19Aug21		
Inv.5087	1 - To INCREASE VANITY TO KITCHEN HEIGHT GREATER - 90CM HIGH - MAINTAINS VANITY DEPTH - CLASSIC SERIES in the Master Ensuite	
Line 66628	Note:	
18Aug21 / 19Aug21		
Inv.5087	1 - To supply & install the VANITY BANK OF DRAWERS - CLASSIC SERIES in the master ensuite... see sketch # 2	
Line 66630	Note:	
18Aug21 / 19Aug21		

COUNTER TOP

Inv.5087	1 - To supply & install the quartz shower niche in the master ensuite... see sketch # 2	
Line 66616	Note: Colour to be determined at the interior finishing appointent.	
18Aug21 / 19Aug21		
Inv.5093	1 - To supply the Qurtz Shower Niche in the Master Ensuite (Purchased August 19/2021) in the colour: IMPERIAL WHITE	
Line 66757	Note:	
25Aug21 / 25Aug21		
Inv.5087	1 - As per schedule "PE": Vendor to include level 1, 2cm. granite or quartz in all bathrooms, as per plan, in lieu of the included laminate counter tops. Selections to be made from builders standard samples.	
Line 66538	Note:	
18Aug21 / 19Aug21		

DOORS AND WINDOWS

Inv.5087	1 - As per schedule "PE": Vendor agrees to increase the size of the front door to 42 inches wide door, 8 feet high, which will have no side lights or transom on top, and the door will not have glass insert, but a peep hole.	
Line 66540	Note:	
18Aug21 / 19Aug21		

ELECTRICAL

Inv.5087	1 - To supply and install the standard T.V Rough-in, in the Great Room and Master Bedroom... see sketch #1 and #2	
Line 66602	Note:	
18Aug21 / 19Aug21		
Inv.5087	1 - To supply and install the standard Phone (CAT 5) rough-in, in the Great Room, Master Bedroom and Bedroom #3.. see sketch #1 and #2	
Line 66603	Note:	
18Aug21 / 19Aug21		
Inv.5087	1 - To SUPPLY AND INSTALL AN ADDITIONAL BASIC RECEPTACLE (NOT DEDICATED) centered +- above the F/P Mantle in the Great Room at approx. 66" +- up from the floor... see sketch #1	
Line 66604	Note:	
18Aug21 / 19Aug21		

**Kingsmen (Thames) Inc. / Havelock Corners (Kingsmen)**

**Lot/Unit: 110    Phase/Building: 4B    Model/Floor Plan: Spencer (4204) Elev C 4 Bed - 4+1 Bath**

Inv.5087	1 - To SUPPLY AND INSTALL CONDUIT FOR TV OVER THE FIREPLACE next to +- the upg. elec outlet in the Great Room– TERMINATED IN SAME ROOM next to standard Phone and T.V Rough-in.. see sketch #1	
Line 66605	Note: This is for a future wall mount t.v.	
18Aug21 / 19Aug21		
Inv.5087	1 - To SUPPLY AND INSTALL EXTRA 240 STOVE PLUG for future single wall oven..see spec's and sketch #1	
Line 66606	Note:	
18Aug21 / 19Aug21		
Inv.5087	1 - To SUPPLY AND INSTALL AN ADDITIONAL BASIC RECEPTACLE (DEDICATED CIRCUIT AND INCLUDES ARC FAULT BREAKER) for future microwave.. see spec's and sketch #1	
Line 66607	Note:	
18Aug21 / 19Aug21		
Inv.5087	1 - To SUPPLY AND INSTALL EXTRA CEILING BOX ROUGH IN CAPPED (ON A SEP. SWITCH) over the breakfast bar in the kitchen.. see sketch #1	
Line 66609	Note:	
18Aug21 / 19Aug21		
Inv.5087	1 - To relocate the standard light from the second floor landing to the open to below area...see sketch #2	
Line 66610	Note:	
18Aug21 / 19Aug21		
Inv.5087	1 - To SUPPLY AND INSTALL REINFORCING FOR A CEILING to the open to below area light.. see sketch #2	
Line 66611	Note:	
18Aug21 / 19Aug21		
Inv.5087	1 - To supply & install the standard sytle hood fan in 36" wide in lieu of the std. 30" wide	
Line 66613	Note:	
18Aug21 / 19Aug21		

**HARDWOOD**

Inv.5087	1 - As per schedule "PE" Vendor to include engineered hardwood flooring throughout the second floor in lieu of included carpet, as per plan,and selections as outlined in schedule A for included engineered hardwood on the main floor.This has no cash value.	
Line 66539	Note:	
18Aug21 / 19Aug21		

**HEATING AND AIR CONDITIONING**

Inv.5087	1 - As per schedule "PE": Vendor to install capped gas line ( rough in only ) at rear of home for future BBQ location. Location to be finalized at vendors sole discretion.	
Line 66535	Note:	
18Aug21 / 19Aug21		
Inv.5087	1 - As per schedule "PE": Vendor to install gas line ( rough in only ) to kitchen in as stove location ( as per plan ) to include 110 V code requirement.	
Line 66536	Note:	
18Aug21 / 19Aug21		

**Kingsmen (Thames) Inc. / Havelock Corners (Kingsmen)**

**Lot/Unit: 110    Phase/Building: 4B    Model/Floor Plan: Spencer (4204) Elev C 4 Bed - 4+1 Bath**

Inv.5087	1 - As per schedule "PE": Vendor to supply & install air conditioning unit, sized accordingly, from vendors standard samples.	
Line 66537	Note:	
18Aug21 / 19Aug21		

**HVAC**

Inv.5087	1 - To supply and install a humidifier...	
Line 66596	Note:	
18Aug21 / 19Aug21		

**MISCELLANEOUS**

Inv.5093	1 - Interior finishes have been selected on August 25/2021	
Line 66756	Note:	
25Aug21 / 25Aug21		

**PLUMBING**

Inv.5087	1 - To supply and install a KITCHEN SOAP DISPENSER - MOEN CHROME - MODEL 3942 in the kitchen... see spec's and sketch #1	
Line 66617	Note:	
18Aug21 / 19Aug21		
Inv.5087	1 - To supply and install the Mirolin Brooke free standing tub in the Master Ensuite in lieu of the standard... see spec's	
Line 66598	Note:	
18Aug21 / 19Aug21		
Inv.5087	2 - To increase the height of the toe tester in th Master Ensuite Shower and Bedroom #2 Shower to approx. 28"+- up from the floor	
Line 66599	Note:	
18Aug21 / 19Aug21		
Inv.5087	1 - To supply a WATERLINE ROUGH-IN TO THE FRIDGE LOCATION (NO HOOK UP)	
Line 66600	Note:	
18Aug21 / 19Aug21		
Inv.5087	6 - To supply and install VANITY SINK - CONTRAC CATENA UNDERMOUNT - MODEL 4210CIY in ALL BATHROOMS (PWD, Master Ensuite, Bedroom #2, #3 and #4) in lieu of the standard.. see spec's	
Line 66615	Note: Still to install the standard lav. faucets.	
18Aug21 / 19Aug21		

**RAILING**

Inv.5093	1 - To supply and install RAILING - UPGRADE 1 - METAL HANDRAIL 3 INCH OVAL IN OAK - PICKETS STEEL ½ INCH SQUARE, PLAIN, WITH SHOES IN FLAT BLACK - POSTS 3½ INCH SQUARE, WITH CAP OAK IN OAK in lieu of the standard	
Line 66758	Note:	
25Aug21 / 25Aug21		

Kingsmen (Thames) Inc. / Havelock Corners (Kingsmen)

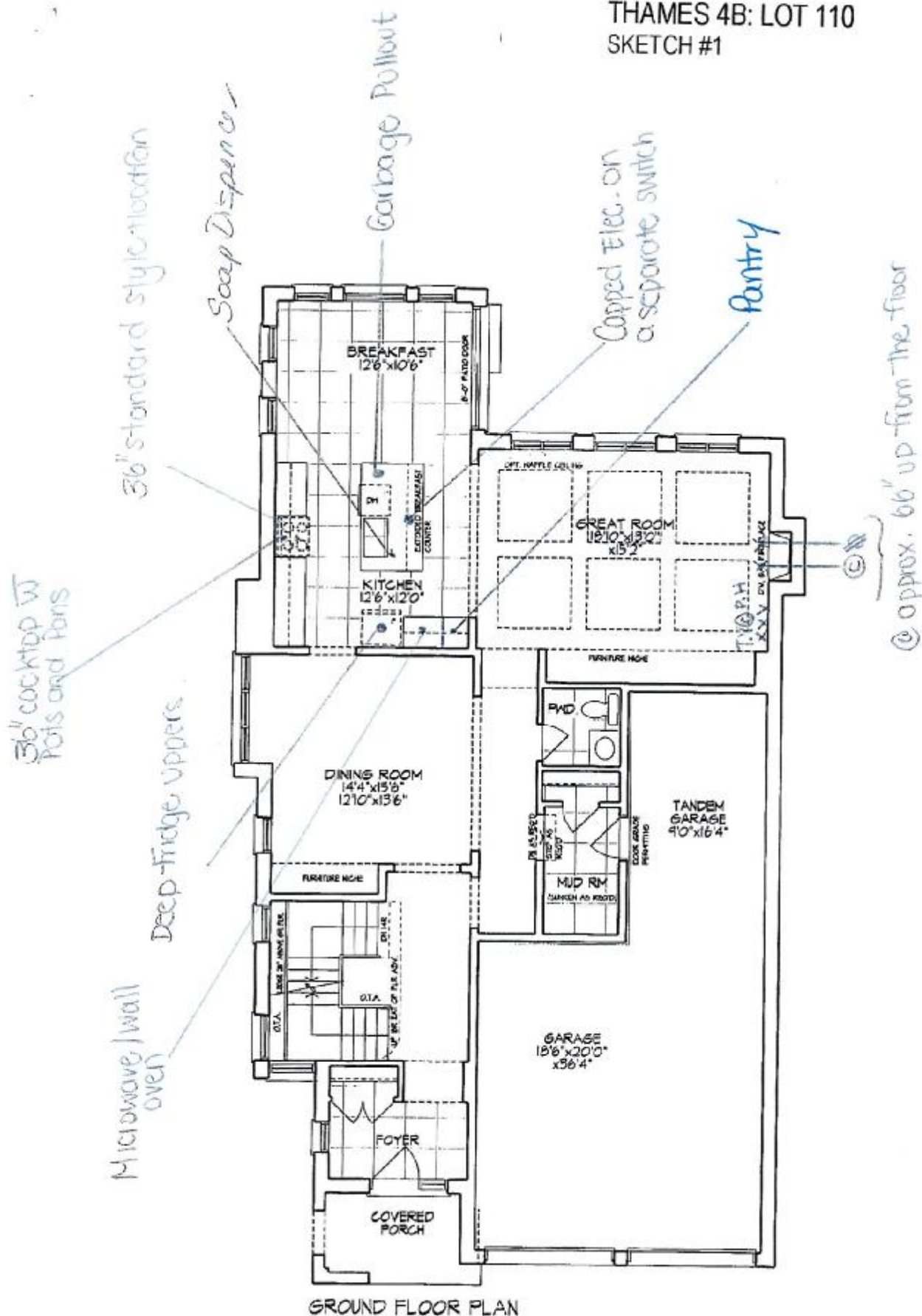
Lot/Unit: 110    Phase/Building: 4B    Model/Floor Plan: Spencer (4204) Elev C 4 Bed - 4+1 Bath

EXTRAS AS PER OFFER

PURCHASER ACKNOWLEDGES THIS HOME WILL RECIEVE A CORNER LOT UPGRADE TO THE ELEVATION. SUCH UPGRADE WILL BE DESIGNED AND APPROVED BY THE BUILDER AND/OR THEIR ARCHITECTS AND IS NOT SUBJECT TO CHANGE OR MODIFICATION BY THE PURCHASER. AS PER SCHEDULE B1 AND <i>Worksheet</i> Note:	
5 FREE APPLIANCES ? STAINLESS STEEL FRONT - FRIDGE: STOVE AND DISHWASHER. WHITE WASHER AND DRYER (SUPPLIED ONLY, NOT INSTALLED, FROM BUILDERS STANDARD LINE). A BAD BOY APPLIANCES VOUCHER WILL BE GIVEN BY OUR DECOR CONSULTANT AT THE TIME OF BOOKING YOUR C <i>Worksheet</i> Note:	
VENDOR TO INSTALL CAPPED GAS LINE (ROUGH-IN ONLY) AT REAR OF HOME FOR FUTURE BBQ LOCATION. LOCATION TO BE FINALIZED AT VENDORS SOLE DISCRETION. <i>Worksheet</i> Note:	
VENDOR TO INSTALL GAS LINE (ROUGH-IN ONLY) TO KITCHEN IN AT STOVE LOCATION (AS PER PLAN) TO INCLUDE 110V CODE REQUIREMENT. <i>Worksheet</i> Note:	
VENDOR TO SUPPLY & INSTALL AIR CONDITIONING UNIT, SIZED ACCORDINGLY, FROM VENDORS STANDARD SAMPLES. <i>Worksheet</i> Note:	
VENDOR TO INCLUDE LEVEL 1, 2CM GRANITE OR QUARTZ IN ALL BATHROOMS, AS PER PLAN, IN LIEU OF THE INCLUDED LAMINATE COUNTER TOPS. SELECTIONS TO BE MADE FROM BUILDERS STANDARD SAMPLES. <i>Worksheet</i> Note:	
VENDOR TO INCLUDE ENGINEERED HARDWOOD FLOORING THROUGHOUT THE SECOND FLOOR IN LIEU OF INCLUDED CARPET, AS PER PLAN, AND SELECTIONS AS OUTLINED IN SCHEDULE A FOR INCLUDED ENGINEERED HARDWOOD ON THE MAIN FLOOR. THIS HAS NO CASH VALUE. <i>Worksheet</i> Note:	
VENDOR AGREES TO INCREASE THE SIZE OF THE FRONT DOOR TO 42 INCHES WIDE DOOR, 8 FEET HIGH, WHICH WILL HAVE NO SIDE LIGHTS OR TRANSOM ON TOP, AND THE DOOR WILL NOT HAVE A GLASS INSERT, BUT A PEEP HOLE. <i>Worksheet</i> Note:	



THAMES 4B: LOT 110  
SKETCH #1



Unit 4204 - El. C1  
SPENCER - CORNER

LOT 110 Phase 4B

Handwritten signature

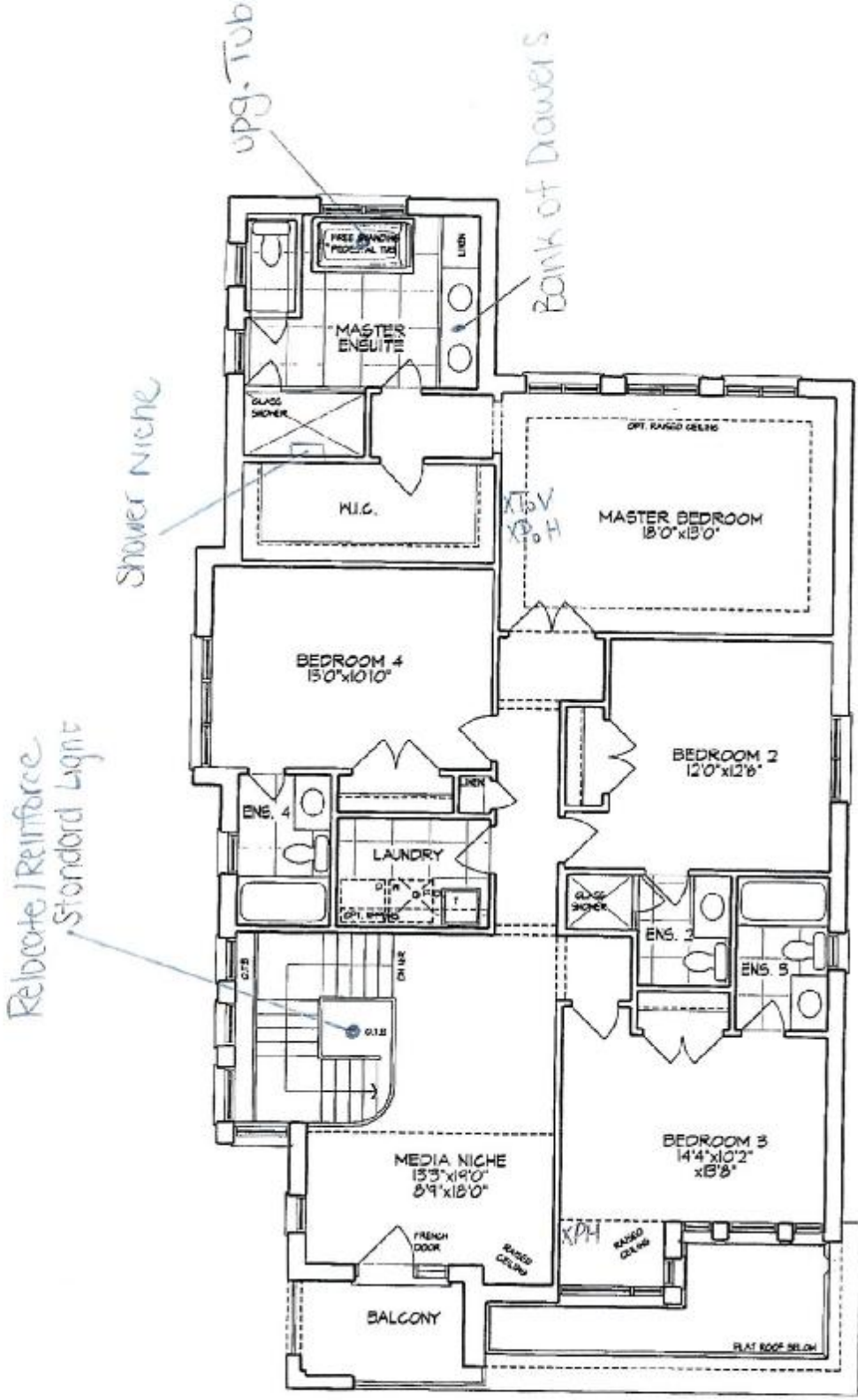
+ Handwritten signature

Schedule B 1 Page 1 of 3

Materials, specifications, and floor plans are subject to change without notice. All renderings are artist conceptions. All floor plans are approximate dimensions. Actual usable floor space may vary from the stated floor area. E. & E.O.

Handwritten initials

Handwritten initials



SECOND FLOOR PLAN

Unit 4204 - El. C1  
SPENCER - CORNER  
Lot 110 Phase 4B

+ *Stewardship* + *SEM*

Schedule B 1

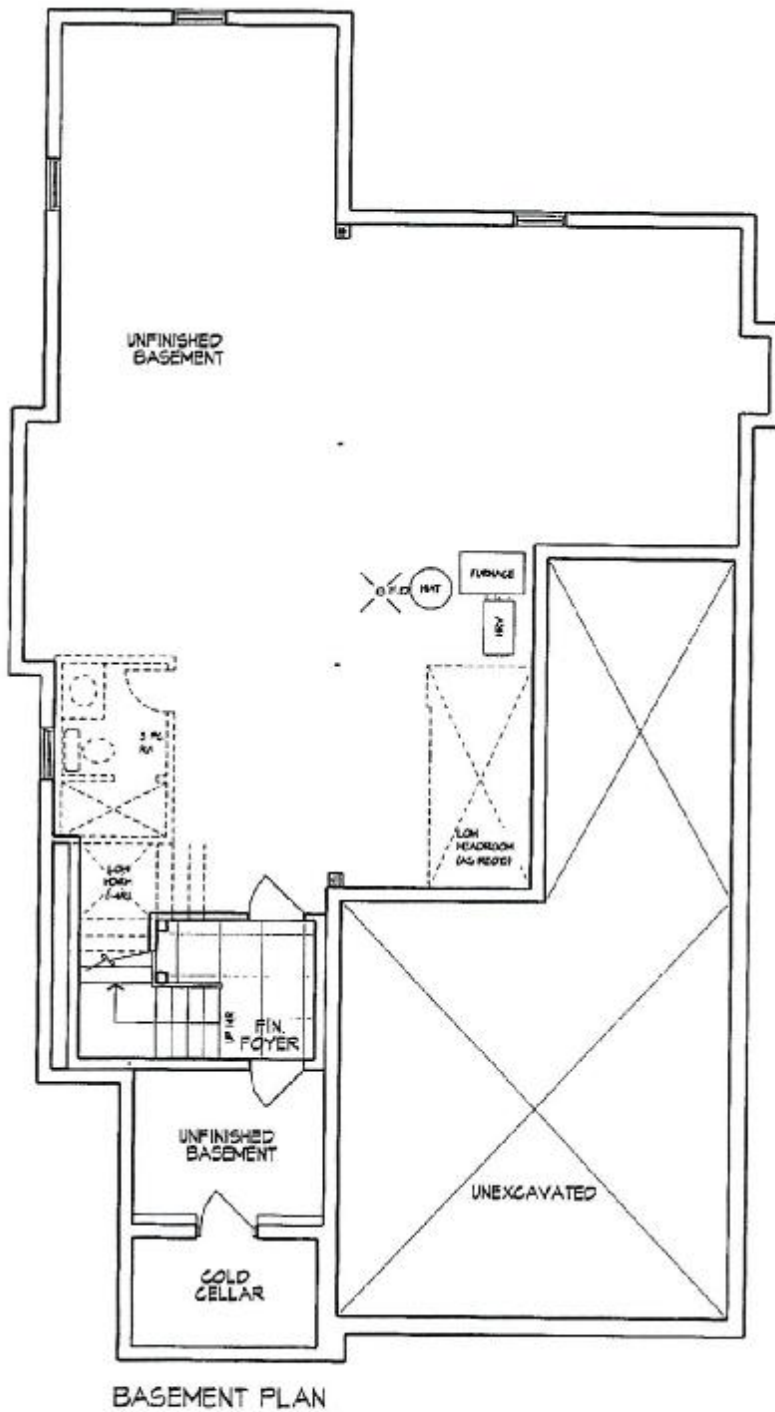
Page 2 of 3

Materials, specifications, and floor plans are subject to change without notice. All renderings are artist conceptions. All floor plans are approximate dimensions. Actual usable floor space may vary from the stated floor area. E. & E.O.



*Jim*

THAMES 4B: LOT 110  
SKETCH #3



Unit 4204 - El. C1  
SPENCER - CORNER

*Spencerplan*

*Spencer*

LOT 110 Phase 4B

Materials, specifications, and floor plans are subject to change without notice.  
All renderings are artist conceptions. All floor plans are approximate dimensions.  
Actual usable floor space may vary from the stated floor area. E. & S.G.

Schedule B1

Page 3 of 3.



THAMES 4B: LOT 110  
RE:UPG. SOAP DISPENSER



**Transitional Soap or  
Lotion Dispenser**

Model 3942

Chrome

Quadrup Ken.

W. S. M.



Brooke™ | 1

### Brooke™

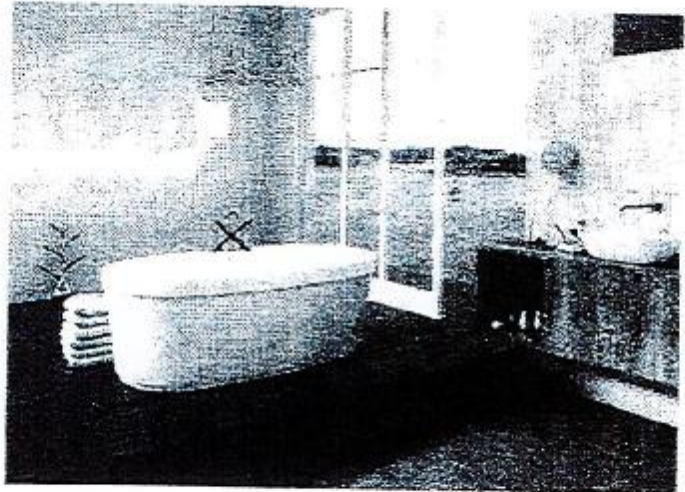
Categories: Acrylic Freestanding

#### DESCRIPTION

68" Freestanding Bath  
SKU #: CF2002

#### FEATURES

- Installation friendly two piece design
- Accepts deck mounted faucet
- Includes a chrome integral pop up drain and rectangular overflow
- ~~• Brushed nickel drain and overflow covers available~~
- Centre drain
- Includes levelling feet
- Available in White Only



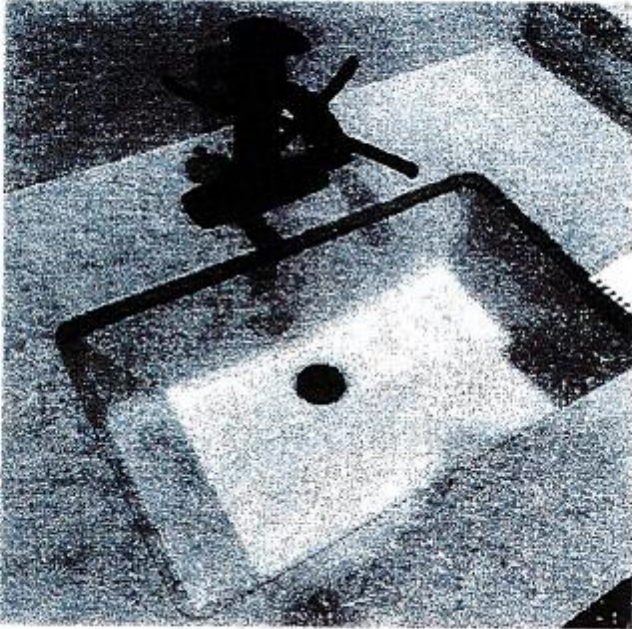
#### DIMENSIONS

68" x 36" x 23"

*[Handwritten signature]*  
+ *[Handwritten signature]*

THAMES 4B: LOT 110

RE: UPG. BATHROOM SINKS (PWD, MASTER  
ENSUITE, BEDROOM #2, #3 & #4)



## DISPLAY ITEMS

### Sink ( Item 9)

Contrac Catena Undermount  
Model 4210CIY

+ Dis

+ down

# NA36N7755TS

36" Gas Cooktop

**SAMSUNG**



## Signature Features

### 22K True Dual-Power Burner

- Two independent heating burners offer intense heat and precise control to quickly boil water or temper chocolate.

### Analog Controls with Digital Wi-Fi and Bluetooth® Technology

- The ultimate combination of analog comfort and digital technology delivers exceptional cooking performance.

### Cast Iron Griddle

- Cook breakfast, grill sandwiches, or sauté vegetables on the removable griddle.

## Available Colors



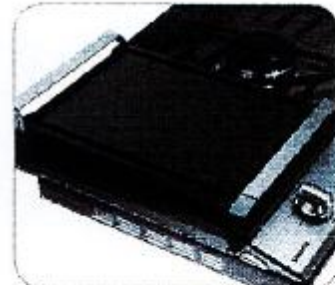
Stainless Steel (shown)



Fingerprint Resistant  
Black Stainless Steel



22K True Dual-Power Burner



Cast Iron Griddle

## Features

- Bluetooth® Connected to Hood
- Blue LED Lights
- Wi-Fi Connectivity
- Powerful Cooktop
  - Right Front: 13K BTU
  - Left Front: 9.5K BTU
  - Right Rear: 5K BTU
  - Left Rear: 9.5K BTU
  - Center: True Dual, 22K BTU (Brass)

- Cast Iron 3-Piece Grates
- Sealed Burners
- Burner On/Off Monitoring
- ADA Compliant

## Convenience

- Wok Grate
- LP Conversion Kit



ADA Compliant





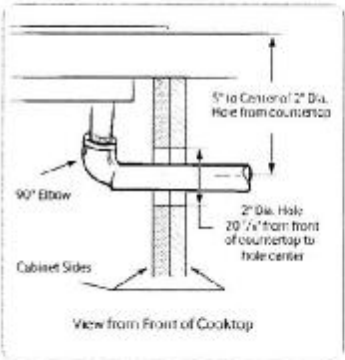
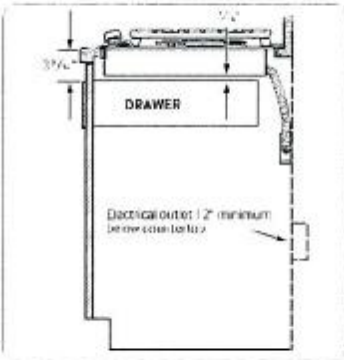
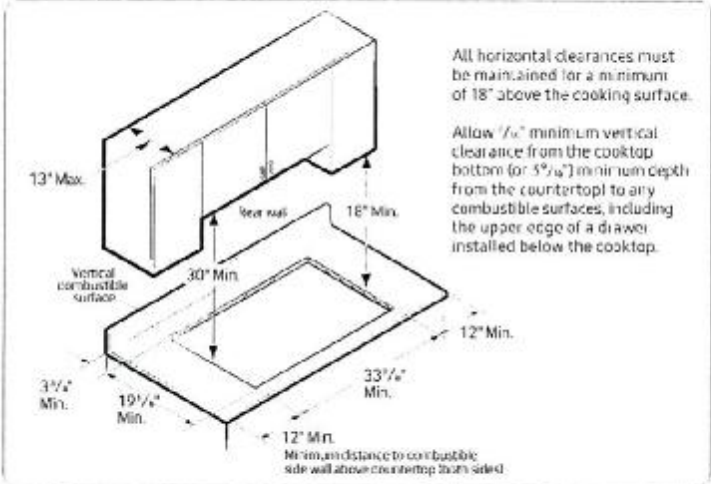
# NA36N7755TS

SAMSUNG

## 36" Gas Cooktop

### Installation Requirements

Countertop cut-out and minimum clearance dimensions:



### Total Power (BTU)

59K

### Power Source

120V / 60 Hz / 1A

### Gas Cooktop (BTU)

- Right Front: 13K
- Left Front: 9.5K
- Right Rear: 5K Simmer
- Left Rear: 9.5K
- Center: 22K (True Dual)

### Warranty

One (1) Year A.I. Parts and Labor

### Product Dimensions & Weight (WxHxD)

Outside (Max) Cooktop Dimensions:

36" x 5 11/12" x 22 1/8"

Cooktop Cut-Out Dimensions:

33 7/8" x 3 1/8" x 19 1/8"

Weight: 87.7 lbs. (88.4 lbs. Fingerprint Resistant Black Stainless Steel)

### Shipping Dimensions & Weight (WxHxD)

Dimensions: 40 3/16" x 10 5/8" x 25 5/8"

Weight: 95.9 lbs. (97.2 lbs. Fingerprint Resistant Black Stainless Steel)

### Color

Stainless Steel

### Model #

NA36N7755TS

### UPC Code

887276281766

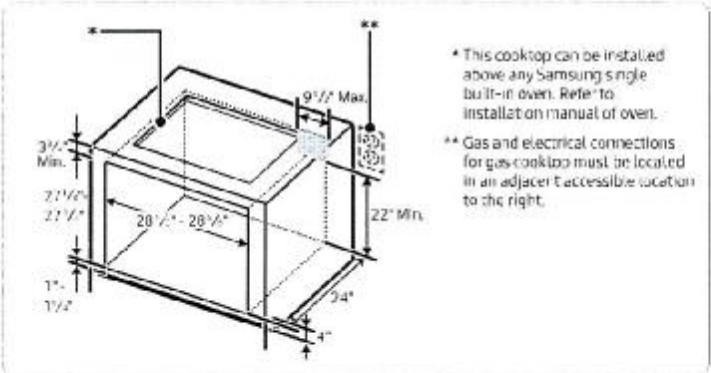
Fingerprint Resistant

Black Stainless Steel

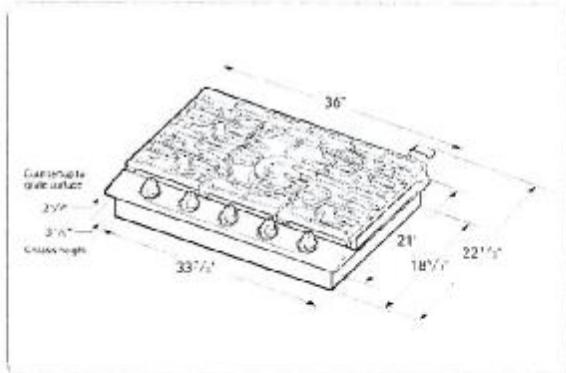
NA36N7755TG

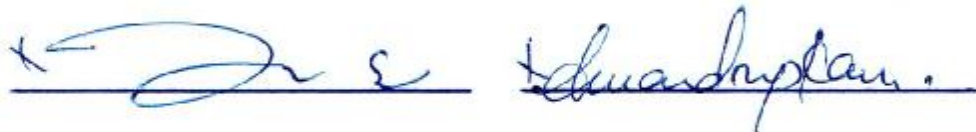
887276281759

### Installing Over a Single Oven



### Cooktop Dimensions







# MS19M8020TG

**SAMSUNG**

1.9 cu. ft., Countertop Microwave and Trim Kit  
for Built-in Applications in Stainless Steel Finish



## Signature Features

### 1.9 cu. ft. Capacity

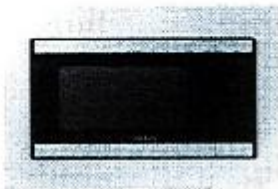
- Accommodates a variety of dishes so you can prep large meals quickly.

### Sensor Cook

- Automatically adjusts cooking time for optimal results.

### Easy Clean Interior

- The smooth and durable Ceramic Enamel is easy to keep clean without scrubbing and won't discolour over time. It is highly rust and scratch-resistant, so it lasts longer.



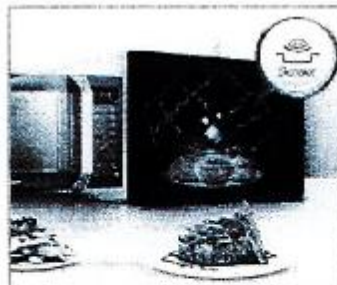
## Available Colours



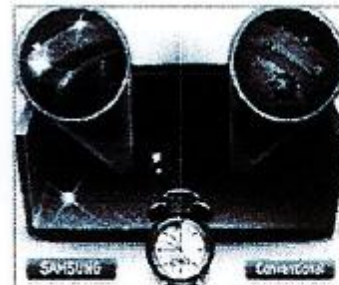
Black Stainless Steel (shown)



Stainless Steel



Sensor Cook



Ceramic Enamel Interior

## Features

- Eco Mode
- Cooking Presets
- 900W of Cooking Power
- 10 Power Levels

- Auto Defrost
- LED Display
- 30" Matching Trim Kit  
(see next page for details.)

## Convenience

- Kitchen Timer
- Clock (12hr/24hr) with Daylight Saving Time Adjustment
- Child Safety Lock
- Reminder End Signal

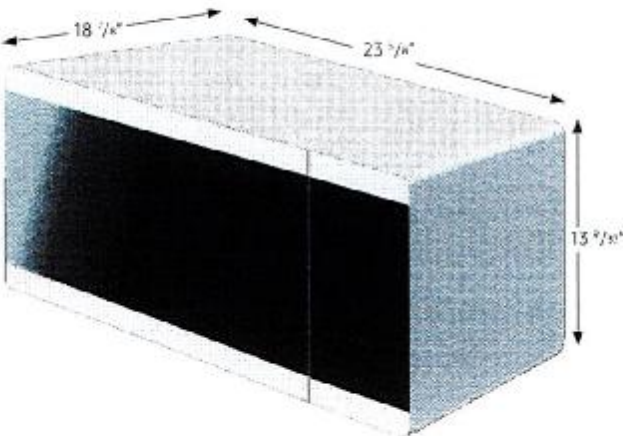
MS19M8020TG

SAMSUNG

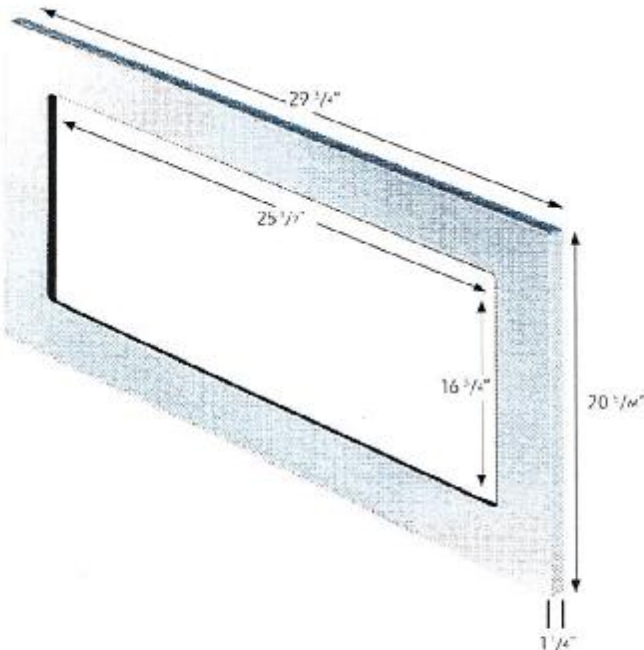
1.9 cu. ft., Countertop Microwave and Trim Kit  
for Built-in Applications in Stainless Steel Finish

Dimensions

Microwave



Trim Kit



Specifications

- Oven Cavity: 1.9 cu. ft.
- Power Output: 900W
- Power Consumption: 1600W/13.3 A
- Power Source: 120V / 60 Hz
- Control Method: Electronic Touch
- Display: LED (Ice Blue)
- Cooking Control: 10 Power Levels Including Defrost
- Cooking Timer: Digital, up to 99 Minutes, 99 Seconds
- Microwave Distribution System: Turntable

Warranty

One (1) Year Parts and Labour  
Five (5) Years on Magnetron Microwave Technology

Microwave Product Dimensions & Weight (WxHxD)

Outside Dimensions: 23 1/4" x 13 1/2" x 18 1/4"  
Interior Cavity Dimensions: 17 1/8" x 10 1/8" x 17 1/16"  
Weight: 42.5 lbs. (19.28 Kg)

Trim Kit Dimensions (WxHxD)

Outside Dimensions: 29 1/4" x 20 1/4" x 1 1/4"  
Cut Out (WxH): 25 1/2" x 16 3/4"  
Weight: 12.83 lbs. (5.81 Kg)

Microwave Shipping Dimensions & Weight (WxHxD)

Dimensions: 26 1/4" x 16 1/2" x 20 1/4"  
Weight: 47.4 lbs. (21.5 Kg)

Trim Kit Shipping Dimensions (WxHxD)

Dimensions: 22 1/4" x 6 3/4" x 33 1/2"  
Weight: 16.78 lbs. (7.6 Kg)

Countertop Microwave and Trim Kit for  
Built-in Applications

For installation with Wall Ovens, respective codes must  
be paired together:

Colour	Product:	Model #	UPC Code
Black Stainless Steel	Microwave	MS19M8020TG	887275263052
Black Stainless Steel	Trim Kit	MA-1K80201G	887275263021
Stainless Steel	Microwave	MS19M8000AS	887275263045
Stainless Steel	Trim Kit	MA-TK8020TS	887275263038





# NV51K6650SS

30" Single Wall Oven

## Features

- Guiding Light Controls
- Wi-Fi Connectivity
- Wi-Fi Enabled Temperature Probe
- LED Spotlights
- Easy View Window
- 2 Heavy Duty Racks including a Gliding Rack
- Broil Element
- Smart Control Key
- 6 Rack Positions
- Drop-Down Door Design
- Full Touch Control Method
- ADA Compliant

## Convenience

- Rapid Preheat
- Sabbath Mode
- Hybrid Clean and Self-Clean
- Hidden Bake Element
- Delay Start
- Convection Conversion
- Child Safety Lock
- Proofing
- Warming Mode
- Kitchen Timer



ADA Compliant



Steam Cook



Dual Convection

## Available Colors



Stainless Steel (shown)



Black Stainless Steel

## Signature Features

### STEAM COOK

- Delivers moisture at precise times for a crisp and brown outside and tender inside.

### DUAL CONVECTION

- Circulates air far faster, more even cooking using true convection.

### 5.1 CU. FT. CAPACITY

- Accommodates a roast, multiple casserole dishes or several racks of cookies.

**SAMSUNG**



# NV51K6650SS

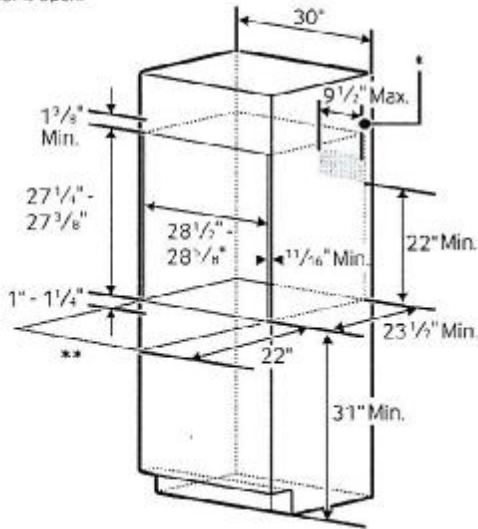
30" Single Wall Oven

## Cabinet Dimensions

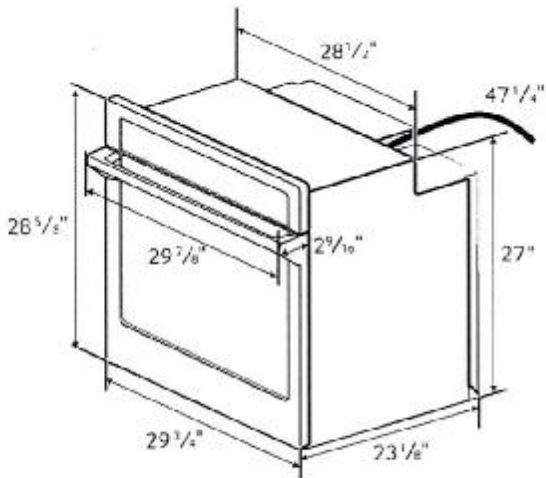
Single Oven Installed in Cabinet

\* Junction Box

\*\* Allow a minimum of 22" for clearance to adjacent corners, drawers, walls, etc. when door is open.



## Product Dimensions



## Convection Wall Oven

- Hidden Bake Element
- Bake: 175°F–550°F
- Convection Bake: 175°F–550°F
- Convection Roast: 175°F–550°F
- Broil: Low-High
- Steam Bake: 230°F–550°F
- Steam Roast: 230°F–550°F
- Proofing
- Sabbath Mode

## Warranty

One (1) Year All Parts and Labor

## Product Dimensions & Weight (WxHxD)

Outside (Max) Wall Oven Dimensions:

29 7/8" x 28 5/8" x 25 1/8"

Wall Oven Cut-Out Dimensions:

28 1/2" x 27 1/4" x 23 1/2"

Weight: 136.7 lbs.

## Shipping Dimensions & Weight (WxHxD)

Dimensions:

33 1/2" x 33 1/4" x 29 15/16"


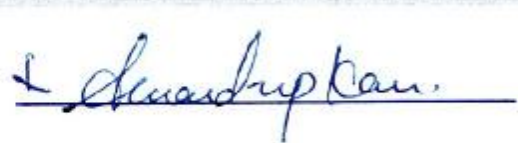
Weight: 163.1 lbs.

Color	Model #	UPC Code
Stainless Steel	NV51K6650SS	887276184029
Black Stainless Steel	NV51K6650SG	887276184012

RATING	
240V	4.9 kW
208V	3.7 kW
BREAKER SIZE	
240V	30 Amps
208V	20 Amps

**SAMSUNG**

Actual color may vary. Design, specifications, and color availability are subject to change without notice.  
Non-metric weights and measurements are approximate.  
©2017 Samsung Electronics America, Inc. 65 Challenger Road, Ridgefield Park, NJ 07666. Tel: 800-SAMSUNG, samsung.com  
Samsung is a registered trademark of Samsung Electronics Co., Ltd.

# RF28R7201SR

28 cu. ft. 4-Door French Door Refrigerator

THAMES 4B: LOT 110

RE: FRIDGE SPEC'S



## Signature Features

### FlexZone™ Drawer

A flexible storage drawer with four different temperature settings and an adjustable Smart Divider to stay organized.

### Fingerprint Resistant

A special finish to reduce smudges and minimize cleaning.

### Wi-Fi and Bixby Enabled

Use your smartphone to control the temperature and monitor your refrigerator remotely.

## Available Colors

-  Fingerprint Resistant Stainless Steel (shown)
-  Fingerprint Resistant Black Stainless Steel
-  Fingerprint Resistant Tuscan Stainless Steel



French Door Design



FlexZone™ Drawer

## Convenience

- FlexZone™ Drawer with 4 Temperature Settings and Smart Divider
- Adjustable Shelves for Tall Oversized Items
- Auto Pull-Out Upper Freezer Drawer
- Water Filter Indicator

## Design

- Modern External Filtered Water and Ice Dispenser
- High Efficiency LED Lighting
- Accessibility (ADA Compliant)
- EZ-Open Handle™ on Freezer Door and FlexZone™ Drawer
- Tempered Glass Spill-Proof Shelves
- Gallon Door Bins
- Dispenser Light

## Performance

- Twin Cooling Plus®
- Ice Max - Stores up to 10 lbs of ice
- Energy Star® Compliant
- Power Freeze and Power Cool Options
- Two Humidity-Controlled Crispers
- CoolTight Door
- Door Alarm

## Rating



ENERGY STAR® rated:  
755 kWh/yr



# RF28R7201SR

28 cu. ft. 4-Door French Door Refrigerator

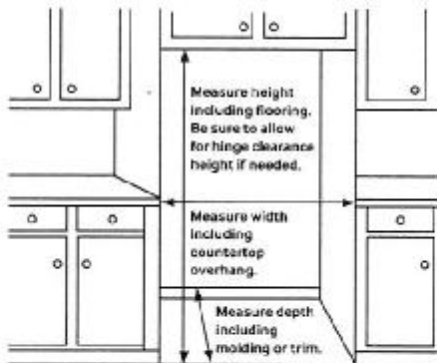
THAMES 4B: LOT 110  
RE: FRIDGE SPEC'S

## Installation Specifications

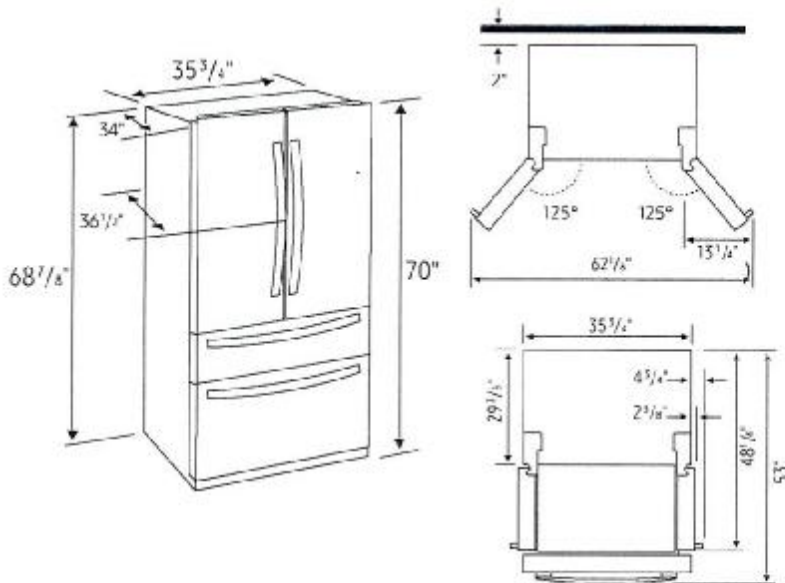
1. Measure the height, width and depth of the opening, making sure to include baseboards, molding tile, countertop overhang, etc. Check to be sure there is enough room to open the door (consider walls, islands or other obstacles when measuring).
2. Refer to illustration below to determine dimensions.
3. Allow 2.5" of clearance on hinge side of refrigerator when installing next to a wall where handle may make contact.
4. Allow 1" minimum clearance at rear for proper air circulation and water/electrical connections. Allow a 3/8" minimum clearance at sides and top for ease of installation.
5. Ensure each door and entryway in the home is wide enough for the refrigerator to be moved through easily.

For optimal usage and to be able to open refrigerator doors completely, do not install next to a wall.

Please note: The following dimension and cutout information is for planning purposes only. For complete installation details, consult manual packed with product, or download manual online at [samsung.com](http://samsung.com).



## Dimensions



**Total Capacity: 28 cu. ft.**

**Refrigerator: 15.9 cu. ft.**

- Modern External Filtered Water and Ice Dispenser – Crushed or Cubed Ice
- Ice Max
- 2 Humidity-Controlled Crispers
- 5 Tempered Glass Spill-Proof Shelves
- Adjustable Shelf for Tall Oversized Items
- 6 Door Bins
  - Right Door: 3 Gallon Bins
  - Left Door: 3 Regular Bins
- High Efficiency LED Lighting

**FlexZone™ Drawer: 3.8 cu. ft.**

- EZ-Open Handle™
- 4 Temperature Zones with Smart Divider:
  - Meat/Fish (29°F)
  - Cold Drinks (33°F)
  - Deli/Snacks (37°F)
  - Wine/Party Dishes (42°F)
- High Efficiency LED Lighting

**Freezer: 8.3 cu. ft.**

- EZ-Open Handle™
- 1 Drawer Divider
- High Efficiency LED Lighting

## Warranty

One (1) Year Parts and Labor on Refrigerator

Five (5) Years Parts and Labor on

Sealed Refrigeration System Only\*

Ten (10) Years Parts and Five (5) Years

Labor on Digital Inverter Compressor

\*Compressor, evaporator, condenser, drier and connecting tubing

## Product Dimensions & Weight

Dimensions (WxHxD with hinges, handles and doors):

35 3/4" x 70" x 36 1/2"

Dimensions (WxHxD without hinges and door):

35 3/4" x 68 7/8" x 29 3/8"

Dimensions (WxHxD with hinge and door, no handle):

35 3/4" x 70" x 34"

Weight: 322 lbs.

## Shipping Dimensions & Weight (WxHxD)

Dimensions: 38 1/4" x 75 3/4" x 36 1/4"

Weight: 344 lbs.

Color	Model #	UPC Code
Fingerprint Resistant Stainless Steel	RF28R7201SR	887276304922
Fingerprint Resistant Black Stainless Steel	RF28R7201SG	887276304915
Fingerprint Resistant Tuscan Stainless Steel	RF28R7201DT	887276304908

Actual color may vary. Design, specifications, and color availability are subject to change without notice. Non-metric weights and measurements are approximate.

©2019 Samsung Electronics America, Inc., 85 Challenger Road, Ridgefield Park, NJ 07660. Tel: 800-SAMSUNG, [samsung.com](http://samsung.com). Samsung is a registered trademark of Samsung Electronics Co., Ltd.