

Kingsmen (Thames) Inc. / Havelock Corners (Kingsmen)

Lot/Unit: 15    Phase/Building: 4B    Model/Floor Plan: Kensington(6001)Elev A OPT GRND 4  
BED-4+1 BATH

CABINETRY

Inv.5086	1 - To increase stove opening from 30" to 36"	
Line 66594	Note:	
18Aug21 / 19Aug21		

CABINETRY MICROWAVE OVEN STOVE COOKTOP

Inv.5086	1 - To supply and install a WALL CABINET WITH SHELF FOR MICROWAVE - FINISHED INTERIOR - OPENING 24INCHESW X 13 3 - 4INCHESH X 17INCHESD - CLASSIC SERIES.. see sketch #1	
Line 66593	Note:	
18Aug21 / 19Aug21		

COUNTER TOP

Inv.5086	1 - As per schedule "PE": Vendor to include level 1, 2cm. granite or quartz in all bathrooms, as per plan, in lieu of the included laminate counter tops. Selections to be made from builders standard samples.	
Line 66534	Note:	
18Aug21 / 19Aug21		

ELECTRICAL

Inv.5086	1 - To supply and install the standard T.V Rough-in, in the Great Room and Master Bedroom... see sketch #1 and #2	
Line 66585	Note:	
18Aug21 / 19Aug21		
Inv.5086	1 - To supply and install the standard Phone (CAT 5) rough-in, in the Great Room, Master Bedroom and Library... see sketch #1 and #2	
Line 66586	Note:	
18Aug21 / 19Aug21		
Inv.5086	1 - To SUPPLY AND INSTALL AN ADDITIONAL BASIC RECEPTACLE (NOT DEDICATED) centered +- over the F/P Mantle in the Great Room at approx. 66" +- up from the floor.. see sketch #1	
Line 66587	Note: This is for a future wall mount T.V.	
18Aug21 / 19Aug21		
Inv.5086	1 - To SUPPLY AND INSTALL CONDUIT FOR TV OVER THE FIREPLACE next to +- the upg. elec outlet in the Great Room – TERMINATED IN SAME ROOM next to +- the upg. T.V and Phone rough-in... see sketch #1	
Line 66588	Note: This is for a future wall mount T.V.	
18Aug21 / 19Aug21		
Inv.5086	1 - To SUPPLY AND INSTALL REINFORCING FOR A CEILING to the Open to Below Area in the Foyer.. see sketch #2	
Line 66589	Note:	
18Aug21 / 19Aug21		
Inv.5086	1 - To supply and install the standard kitchen hoodfan style in 36"	
Line 66591	Note:	
18Aug21 / 19Aug21		

Kingsmen (Thames) Inc. / Havelock Corners (Kingsmen)

Lot/Unit: 15    Phase/Building: 4B    Model/Floor Plan: Kensington(6001)Elev A OPT GRND 4  
BED-4+1 BATH

Inv.5086	1 - To supply SUPPLY AND INSTALL AN ADDITIONAL BASIC RECEPTACLE (DEDICATED CIRCUIT AND INCLUDES ARC FAULT BREAKER) for microwave shelf.. see sketch #1	
Line 66592	Note:	
18Aug21 / 19Aug21		

HEATING AND AIR CONDITIONING

Inv.5086	1 - As per schedule "PE": Vendor to install capped gas line ( rough in only ) at rear of home for future BBQ location. Location to be finalized at vendors sole discretion.	
Line 66531	Note:	
18Aug21 / 19Aug21		
Inv.5086	1 - As per schedule "PE": Vendor to install gas line ( rough in only ) to kitchen in as stove location ( as per plan ) to include 110 V code requirement.	
Line 66532	Note:	
18Aug21 / 19Aug21		
Inv.5086	1 - As per schedule "PE": Vendor to supply & install air conditioning unit, sized accordingly, from vendors standard samples.	
Line 66533	Note:	
18Aug21 / 19Aug21		

HVAC

Inv.5086	1 - To supply and install a humidifier	
Line 66581	Note:	
18Aug21 / 19Aug21		

MISCELLANEOUS

Inv.5086	1 - As per schedule "PE": Purchaser to receive \$10,000 to spend at the decor centre towards the purchase of upgrades at their scheduled design appointment. ( no cash value, non-negotiable and non-transferrable )	
Line 66530	Note:	
18Aug21 / 19Aug21		

PAINT AND DRYWALL

Inv.5086	1 - To supply and install the optional Waffle ceiling in Great Room... see sketch #1	
Line 66582	Note:	
18Aug21 / 19Aug21		

PLUMBING

Inv.5086	1 - To supply a WATERLINE ROUGH-IN TO THE FRIDGE LOCATION (NO HOOK UP)	
Line 66595	Note:	
18Aug21 / 19Aug21		



CONSTRUCTION SUMMARY

Kingsmen (Thames) Inc. / Havelock Corners (Kingsmen)

Lot/Unit: 15    Phase/Building: 4B    Model/Floor Plan: Kensington(6001)Elev A OPT GRND 4  
BED-4+1 BATH  
EXTRAS AS PER OFFER

5 FREE APPLIANCES – STAINLESS STEEL FRONT - FRIDGE: STOVE AND DISHWASHER. WHITE WASHER AND DRYER (SUPPLIED ONLY, NOT INSTALLED, FROM BUILDERS STANDARD LINE). A BAD BOY APPLIANCES VOUCHER WILL BE GIVEN BY OUR DECOR CONSULTANT AT THE TIME OF BOOKING YOUR C <i>Worksheet</i> Note:	
VENDOR TO INSTALL CAPPED GAS LINE (ROUGH-IN ONLY) AT REAR OF HOME FOR FUTURE BBQ LOCATION.    LOCATION TO BE FINALIZED AT VENDORS SOLE DISCRETION. <i>Worksheet</i> Note:	
VENDOR TO INSTALL GAS LINE (ROUGH-IN ONLY) TO KITCHEN IN AT STOVE LOCATION (AS PER PLAN) TO INCLUDE 110V CODE REQUIREMENT. <i>Worksheet</i> Note:	
VENDOR TO SUPPLY & INSTALL AIR CONDITIONING UNIT, SIZED ACCORDINGLY, FROM VENDORS STANDARD SAMPLES. <i>Worksheet</i> Note:	
VENDOR TO INCLUDE LEVEL 1, 2CM GRANITE OR QUARTZ IN ALL BATHROOMS, AS PER PLAN, IN LIEU OF THE INCLUDED LAMINATE COUNTER TOPS.    SELECTIONS TO BE MADE FROM BUILDERS STANDARD SAMPLES. <i>Worksheet</i> Note:	

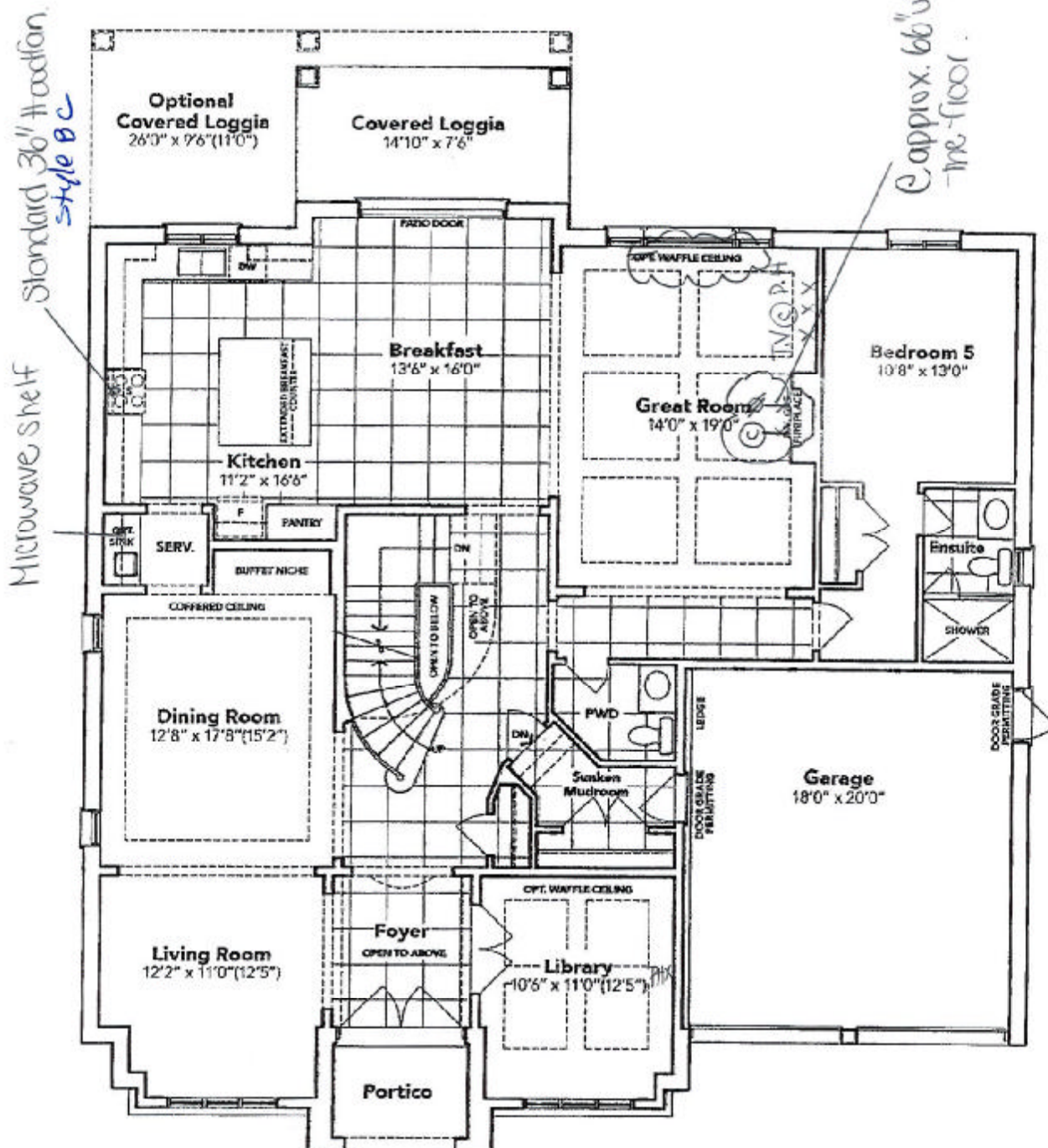
# SCHEDULE "B-1"

## Floor Plan

Model: Kensington(6001)Elev A OPT GRND 4 BED-4+1 BATH

Lot 15  
Phase 4B

SKETCH #1



### OPT. 5 BEDROOM GROUND FLOOR EL. A

The floor plans and elevations shown are pre-construction plans and may be revised or improved as necessitated by architectural controls and the construction process. The measurements adhere to the rules and regulations of the TARIION Warranty Corporation's official method for the calculation of floor area. Materials, specifications and floor plans are subject to change without notice. All house renderings are artist's concept only. Actual usable floor space may vary from the stated floor area. All options shown are upgrades. E. & O. E.

SCHEDULE "B-1" - Page 1 of 3

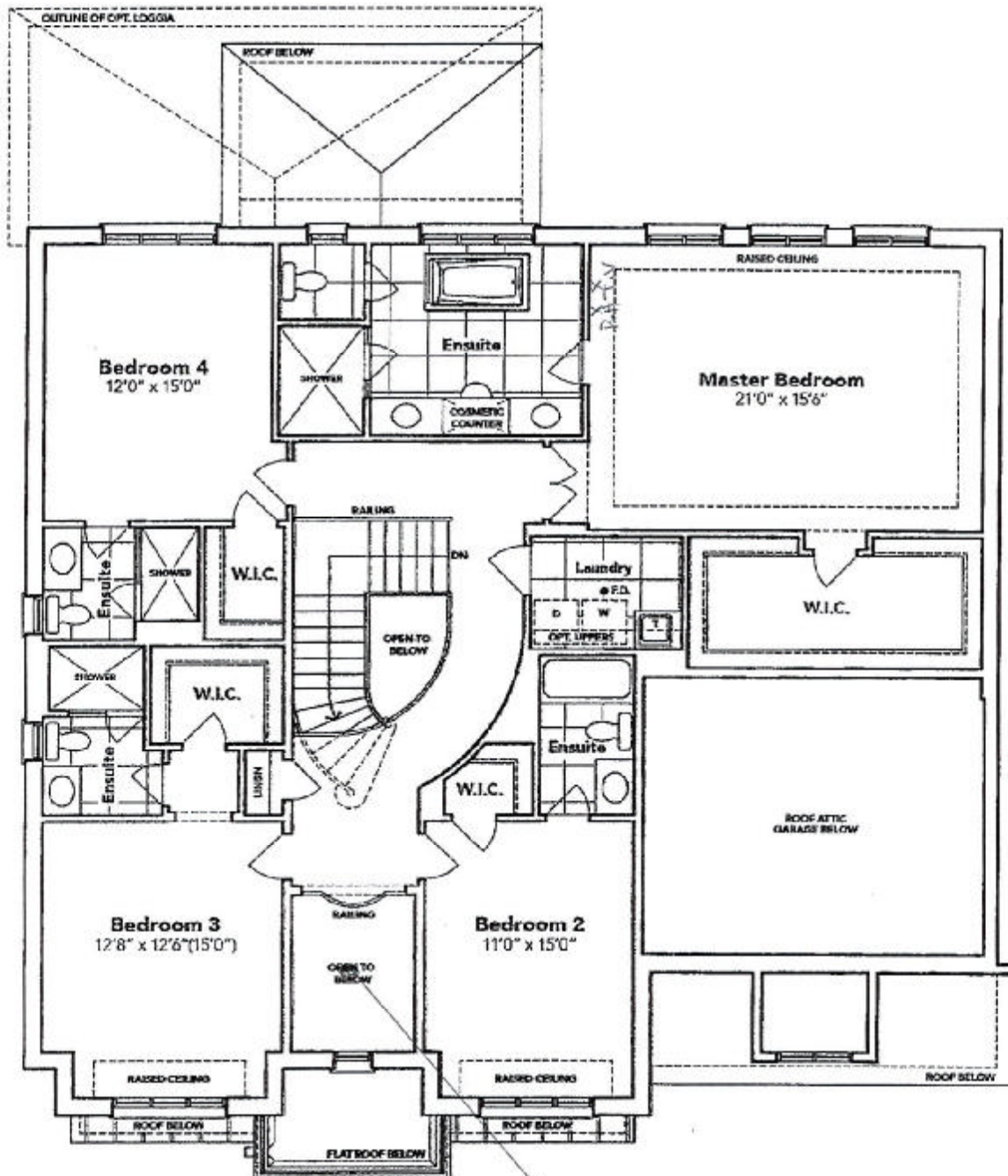


# SCHEDULE "B-1"

## Floor Plan

Lot 15  
Phase 4B  
Model: Kensington(6001)Elev A OPT GRND 4 BED-4+1 BATH

SKETCH #2



## SECOND FLOOR EL. A

The floor plans and elevations shown are pre-construction plans and may be revised or improved as necessitated by architectural controls and the construction process. The measurements adhere to the rules and regulations of the TARIION Warranty Corporation's official method for the calculation of floor area. Materials, specifications and floor plans are subject to change without notice. All house renderings are artist's concept only. Actual usable floor space may vary from the stated floor area. All options shown are upgrades. E. & O. E.

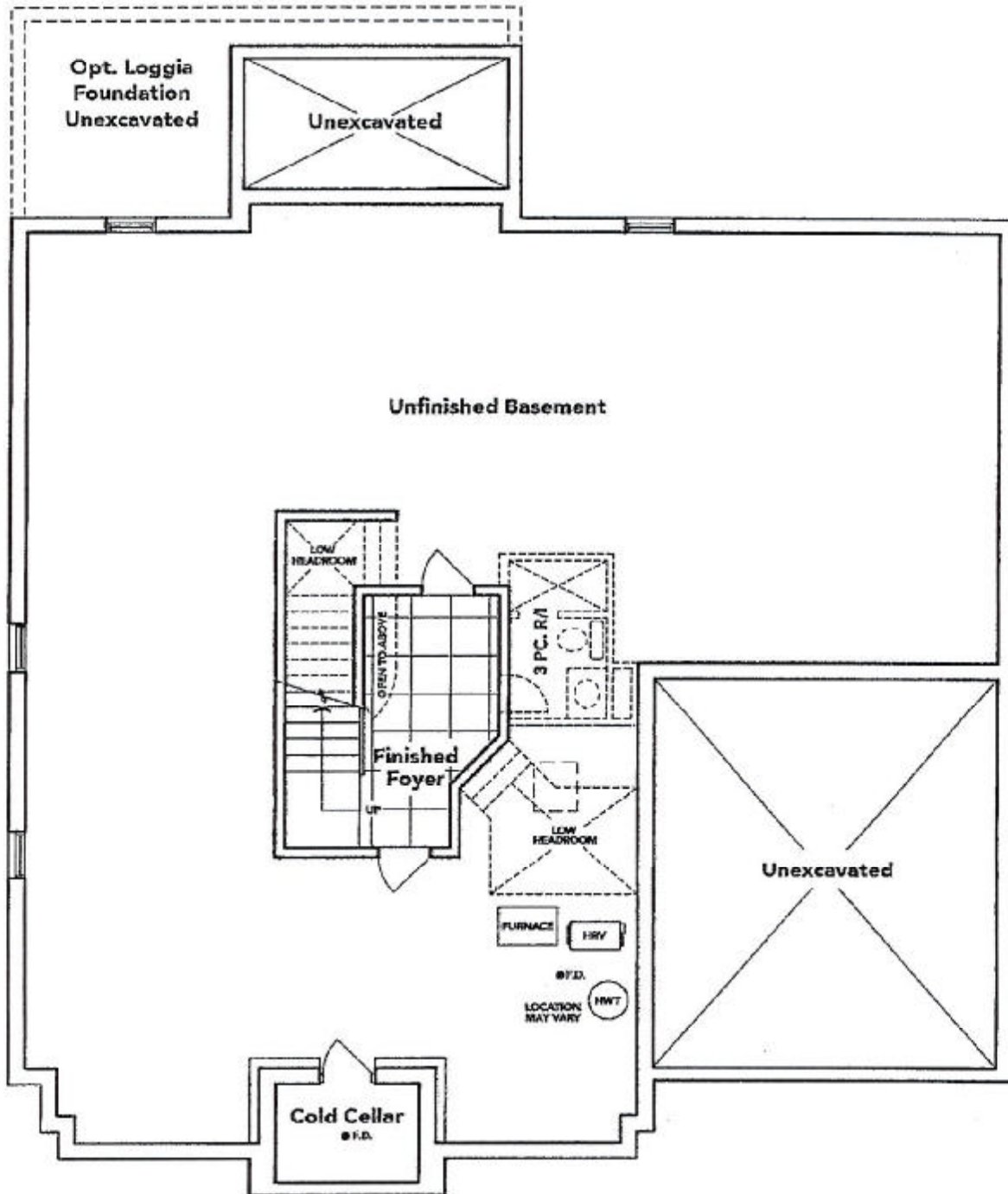
SCHEDULE "B-1" - Page 2 of 3

# SCHEDULE "B-1"

## Floor Plan

Lot 15  
Phase 4B  
Model: Kensington(6001)Elev A OPT GRND 4 BED-4+1 BATH

SKETCH #3



## OPT. BASEMENT EL. A

The floor plans and elevations shown are pre-construction plans and may be revised or improved as necessitated by architectural controls and the construction process. The measurements adhere to the rules and regulations of the TARION Warranty Corporation's official method for the calculation of floor area. Materials, specifications and floor plans are subject to change without notice. All house renderings are artist's concept only. Actual usable floor space may vary from the stated floor area. All options shown are upgrades. E. & O. E.

SCHEDULE "B-1" - Page 3 of 3



# FRIGIDAIRE

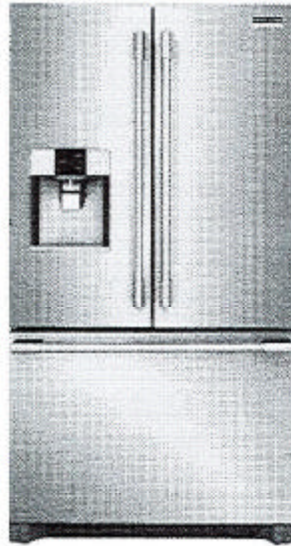
## PROFESSIONAL

THAMES 4B: LOT 15  
RE: FRIDGE SPEC'S

### FPBS2778UF

Frigidaire Professional  
26.7 Cu. Ft. French Door  
Refrigerator

**Smudge-Proof**  
STAINLESS STEEL



AVAILABLE  
COLORS

#### MORE EASY-TO-USE FEATURES

**Smudge-Proof™ Stainless Steel**  
Resists fingerprints and cleans easily.

**Multi-level LED Lighting**  
Find fresh foods quickly with bright multi-level LED lighting.

**EvenTemp™ Cooling System**  
Our EvenTemp™ cooling system keeps food cool without breaking a sweat, distributing air effectively so groceries stay at the right temperature.

**SpaceWise™ Freezer Organization System**  
Our SpaceWise™ Freezer Organization System keeps frozen foods organized and accessible with deep freezer storage and an adjustable divider.

**Effortless™ Glide Freezer Drawers**  
Drawers glide out smoothly and fully extend, giving you easy access to what's inside.

**Automatic Alerts**  
Alerts you if the door is left open, if the temperature rises or if the power goes out so your food stays at its optimal temperature.

**Exterior Water and Ice Dispenser**  
Easily access fresh drinking water and cold ice without opening your refrigerator or freezer.

#### SIGNATURE FEATURES



#### SpaceWise® Organization System

Our SpaceWise® Organization System makes it easy to keep food organized and accessible, with a flip-up shelf to fit taller items with ease, plus adjustable door bins and shelves that offer storage capacity and flexibility.



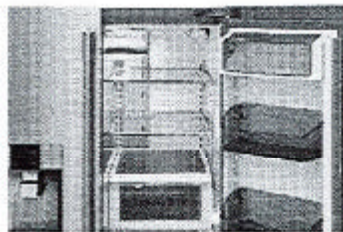
#### Full-Width Deli Drawer

Easily store anything from meats and cheeses to sheet cakes and large platters in our fully-extendable, large capacity deli drawer.



#### CrispSeal™ Crispers

Humidity-controlled CrispSeal™ crispers keep produce fresher longer, so you can waste less and save money.



#### Professional-Grade Design

Durable hardware and professional-grade design features including smoky door bins, door bin liners, edge-to-edge glass shelving with metallic trim, and a distinctive handle lend a high-quality look to your kitchen.

#### CERTIFICATIONS

CSA Certified

[frigidaire.com/frigidaire.ca](http://frigidaire.com/frigidaire.ca)



FPBS2778UF

Frigidaire Professional 26.7 Cu.  
Ft. French Door Refrigerator

THAMES 4B: LOT #15  
RE: FRIDGE SPEC'S

General Specifications

Condenser Type	Dynamic
Product Weight	346.75 lbs
Warranty - Labor	1 Year
Warranty - Parts	1 Year
Power Type	Electric
Size	27 Cu. Ft.
Installation Type	Free-Standing
Collection	Frigidaire Professional

Dispenser

Crushed Ice	Yes
Cube Ice	Yes
Dispenser	Yes
Light Control	Yes
Water	Yes

Electrical Specifications

Minimum Circuit Required	15 Amps
--------------------------	---------

Ice Maker

Ice Maker	Yes
Ice Maker Location	Frozen Section
Second Ice Maker	Yes

Exterior

Exterior Finish	Smudge-Proof <sup>®</sup> Stainless Steel
Cabinet Finish	Textured
Counter-Depth	No
Door Stops	No
Front Rollers	Yes
Rear Rollers	Yes
Water Inlet Location	Left Rear Bottom

Safety Certifications & Approvals

CSA Listed	Yes
ETL Listed	No
NSF Certified	No
ENERGY STAR Certified	No
ADA Compliant	No

Dimensions and Volume

Height With Hinge	70 3/16"
Height Without Hinge	69 7/8"
Width	36"
Width of Cabinet	36"
Depth of Cabinet	32"
Depth With Door	32"
Depth With Door 90° Open	47 3/8"
Depth With Door and Handle	34 3/4"
Depth With Drawer Open	54 3/8"
Fresh Food Capacity	18 Cu. Ft.
Freezer Capacity	8.7 Cu. Ft.
Total Capacity	26.7 Cu. Ft.

Refrigerator

Air Filter	Yes
Crisper Color	Smoky
Dairy Bin	Yes
Door Bin Color	Smoky
Humidity Controls	Automatic
Interior Lighting	LED
Number of Adjustable Gallon Door Bins	4
Number of Other Door Bins	1
Number of Fixed Shelves	1
Number of Crispers	2

Freezer

Auto Close Drawer	Yes
Baskets / Bins Color	White
Interior Lighting	LED
Number of Baskets / Bins	1

Installation

Power Cord Length	72"
-------------------	-----

Controls

Air Filter Indicator	Yes
Control Location	Dispenser
Digital Display	Yes
Door Ajar Alarm	Yes
External Control Lock	Yes
High Temp Alarm	Yes
Ice Maker On/Off	Yes
On/Off Display	No
Power On/Off	Yes
Water Filter Indicator	Yes

**Notes:** For planning purposes only. Always consult local and national electric, gas and plumbing codes. Refer to Product Installation Guide for detailed installation instructions on the web at [frigidaire.com](http://frigidaire.com) / [frigidaire.ca](http://frigidaire.ca).  
Specifications subject to change. Accessories information available on the web at [frigidaire.com](http://frigidaire.com) / [frigidaire.ca](http://frigidaire.ca)

FRIGIDAIRE

USA • 10200 David Taylor Drive • Charlotte, NC 28262 • 1-800-FRIGIDAIRE • [frigidaire.com](http://frigidaire.com)  
CANADA • 5855 Terry Fox Way • Mississauga, ON L5V 3E4 • 1-800-265-8352 • [frigidaire.ca](http://frigidaire.ca)

FPBS2778UF  
©2017 Electrolux Home Products, Inc.

