

Kingsmen (Thames) Inc. / Havelock Corners (Kingsmen)

Lot/Unit: 101 Phase/Building: 4B Model/Floor Plan: Spencer (4204) Elev A 4 Bed - 4+1 Bath

CABINETRY

Inv.5085	1 - To accomodate for 36" chimney in the kitchen...	
Line 66507	Note:	
17Aug21 / 17Aug21		
Inv.5085	1 - Increase the stove opening to 36" in lieu of the standard 30"	
Line 66521	Note:	
17Aug21 / 17Aug21		
Inv.5085	1 - Relocate the standard bank of drawers in the kitchen... see sketch # 2	
Line 66528	Note:	
17Aug21 / 17Aug21		

CABINETRY ACCESSORIES

Inv.5085	4 - To supply & install the LIGHT VALANCE - LIGHT VALANCE IS NOW APPROXIMATELY 2INCHES 50MM HIGH - CLASSIC SERIES in the kitchen.	
Line 66522	Note: Rough in wires on a sep. switch is sold sep.	
17Aug21 / 17Aug21		

CABINETRY APPLIANCE - FRIDGE

Inv.5085	1 - To supply & install the 66CM DEEP FRIDGE ENCLOSURE - COUNTER DEPTH WITH - 1 WALL - 1 66CM DEEP GABLE AND 1 66CM DEEP CABINET - THIS IS NOT A ZERO CLEARANCE ENCLOSURE. STANDARD HEIGHTS AND WIDTHS WILL BE USED. - CLASSIC SERIES ... see sketch # 2	
Line 66525	Note: See fridge spec's attached.	
17Aug21 / 17Aug21		

CABINETRY HOOD FANS

Inv.5085	1 - To supply and install a HOOD FAN - PRO COLLECTION (SCB72236) WALL MOUNT RANGE HOOD WITH 650 CFM FAN - 36 INCH - in the kitchen in lieu of the standard.. see spec's	
Line 66506	Note:	
17Aug21 / 17Aug21		

CABINETRY MICROWAVE OVEN STOVE COOKTOP

Inv.5085	1 - To supply & install the accomodations for a futureBUILT-IN TALL APPLIANCE CABINET WITH DRAWER - S BELOW FOR PANEL-MOUNT - PROUD - OR TRIM KIT INSTALLATIONS - TRIM KIT REQUIRED - SUPPLY ALL SPECS AND INSTALLATION GUIDES - COUNTER DEPTH - CLASSIC SERIES	
Line 66523	Note: In the kitchen... see skech # 2	
17Aug21 / 17Aug21		
Inv.5085	1 - To accomodate for the future 36" COOKTOP CABINET WITH FALSE TOP DRAWER AND POTS AND PANS DRAWERS BELOW - SUPPLY SPECS- CLASSIC SERIES in the kitchen... see specs...see sketch # 2	
Line 66524	Note:	
17Aug21 / 17Aug21		

CABINETRY WALL AND HUTCH

Kingsmen (Thames) Inc. / Havelock Corners (Kingsmen)

Lot/Unit: 101 Phase/Building: 4B Model/Floor Plan: Spencer (4204) Elev A 4 Bed - 4+1 Bath

Inv.5085	2 - To supply & install TWO GLASS DOOR - FROSTED GLASS - UNFINISHED CABINET INTERIOR - PRICED PER EACH - CLASSIC SERIES in the kitchen... see sketch # 2	
Line 66527	Note:	
17Aug21 / 17Aug21		

COUNTER TOP

Inv.5067	1 - As per schedule "PE" Vendor to include level 1, 2cm. granite or quartz in all bathrooms, as per plan, in lieu of the included laminate counter tops. Selections to be made from builders standard samples.	
Line 65977	Note:	
21Jul21 / 21Jul21		

DOORS AND WINDOWS

Inv.5067	1 - To supply & install the optional side door if grade permits... see sketch # 1	
Line 65979	Note:	
21Jul21 / 21Jul21		

ELECTRICAL

Inv.5085	1 - To supply and install the rough-in wires for future Light Valance	
Line 66502	Note: LOWER VALANCE TRIM HAS BEEN PURCHASED AS A SEPARATE UPG.	
17Aug21 / 17Aug21		
Inv.5085	1 - To supply and install the standard Phone (CAT 5) rough-in, in the Great Room, Master Bedroom and Media Niche... see sketch #2 and #3	
Line 66503	Note: Install the phone (CAT 5) rough in at approx. 66" + - up from the floor centered to the F/P mantle in the great room..	
17Aug21 / 17Aug21		
Inv.5085	1 - To supply and install the standard T.V Rough-in, in the Great Room and Master Bedroom.. see sketch #2 and #3	
Line 66504	Note: To install the standard T.V. rough in in the great room at approx. 66" + - up from the floor centered + - to the F/P mantle.	
17Aug21 / 17Aug21		
Inv.5085	1 - To SUPPLY AND INSTALL AN ADDITIONAL BASIC RECEPTACLE (NOT DEDICATED) centered +- over the F/P Mantle in the Great Room, at approx. 66" +- up from the floor.. see sketch #2	
Line 66505	Note:	
17Aug21 / 17Aug21		
Inv.5085	2 - To SUPPLY & INSTALL 4" POT LIGHT IN THE SHOWER C/W LED BULB AND WHITE TRIM (ON A SEPARATE SWITCH) IN Bedroom #3 and Bedroom #4 Bathtub/Shower Combo.. see sketch #3	
Line 66508	Note:	
17Aug21 / 17Aug21		
Inv.5085	1 - To relocate the standard light from the 2nd floor landing to the open to below area.. see sketch #3	
Line 66509	Note:	
17Aug21 / 17Aug21		
Inv.5085	1 - To supply and install FOUR LED POTLIGHTS (ON A SEPARATE SWITCH) in the Dining Room.. see sketch #2	
Line 66511	Note: STILL TO INSTALL THE STANDARD LIGHT	
17Aug21 / 17Aug21		

Kingsmen (Thames) Inc. / Havelock Corners (Kingsmen)

Lot/Unit: 101 Phase/Building: 4B Model/Floor Plan: Spencer (4204) Elev A 4 Bed - 4+1 Bath

Inv.5085	1 - To supply and install SIX LED POTLIGHTS (ON A SEPARATE SWITCH) in the Great Room.. see sketch #2	
Line 66512	Note: STILL TO INSTALL THE STANDARD LIGHT	
17Aug21 / 17Aug21		
Inv.5085	1 - To relocate the standard light in the kitchen to over the breakfast bar.. see sketch #2	
Line 66513	Note:	
17Aug21 / 17Aug21		
Inv.5085	1 - To supply and install FIVE LED POTLIGHTS (ON A SEPARATE SWITCH) in the kitchen... see sketch #2	
Line 66514	Note:	
17Aug21 / 17Aug21		
Inv.5085	1 - To SUPPLY AND INSTALL EXTRA 240 STOVE PLUG for future Microwave Oven Combo... see spec's	
Line 66516	Note:	
17Aug21 / 17Aug21		

HARDWOOD

Inv.5067	1 - As per schedule "PE" Vendor to include engineered hardwood flooring throughout the second floor in lieu of included carpet, as per plan, and selections as outlined in schedule A for included engineered hardwood on the main floor. This has no cash value.	
Line 65978	Note:	
21Jul21 / 21Jul21		

HEATING AND AIR CONDITIONING

Inv.5067	1 - As per schedule "PE" Vendor to install capped line (rough in only) at rear of home for future BBQ location. Location to be finalized at vendors sole discretion.	
Line 65974	Note:	
21Jul21 / 21Jul21		
Inv.5067	1 - As per schedule "PE" Vendor to install gas line (rough in only) to kitchen in at stove location (as per plan) to include 110V code requirement.	
Line 65975	Note:	
21Jul21 / 21Jul21		
Inv.5067	1 - As per schedule "PE" Vendor to supply & install air conditioning unit, sized accordingly, from vendors standard samples.	
Line 65976	Note:	
21Jul21 / 21Jul21		

HVAC

Inv.5085	1 - To supply and install a humdifier...	
Line 66500	Note:	
17Aug21 / 17Aug21		

MISCELLANEOUS

Inv.5085	1 - AMENDMENT FEE	
Line 66529	Note:	
17Aug21 / 17Aug21		

Kingsmen (Thames) Inc. / Havelock Corners (Kingsmen)

Lot/Unit: 101 Phase/Building: 4B Model/Floor Plan: Spencer (4204) Elev A 4 Bed - 4+1 Bath

PAINT AND DRYWALL

Inv.5085	1 - To supply and install the standard Coffered Ceiling, as per plan... see sketch #1	
Line 66501	Note:	
17Aug21 / 17Aug21		

PLUMBING

Inv.5085	6 - To supply and install a VANITY SINK - CONTRAC CATENA UNDERMOUNT - MODEL 4210CIY in the Powder Room, Master Ensuite, Bedroom #2, #3 and #4 in lieu of the standard... see spec's	
Line 66518	Note:	
17Aug21 / 17Aug21		
Inv.5085	1 - Relocate the sink and dishwasher in the kitchen island	
Line 66519	Note:	
17Aug21 / 17Aug21		

EXTRAS AS PER OFFER

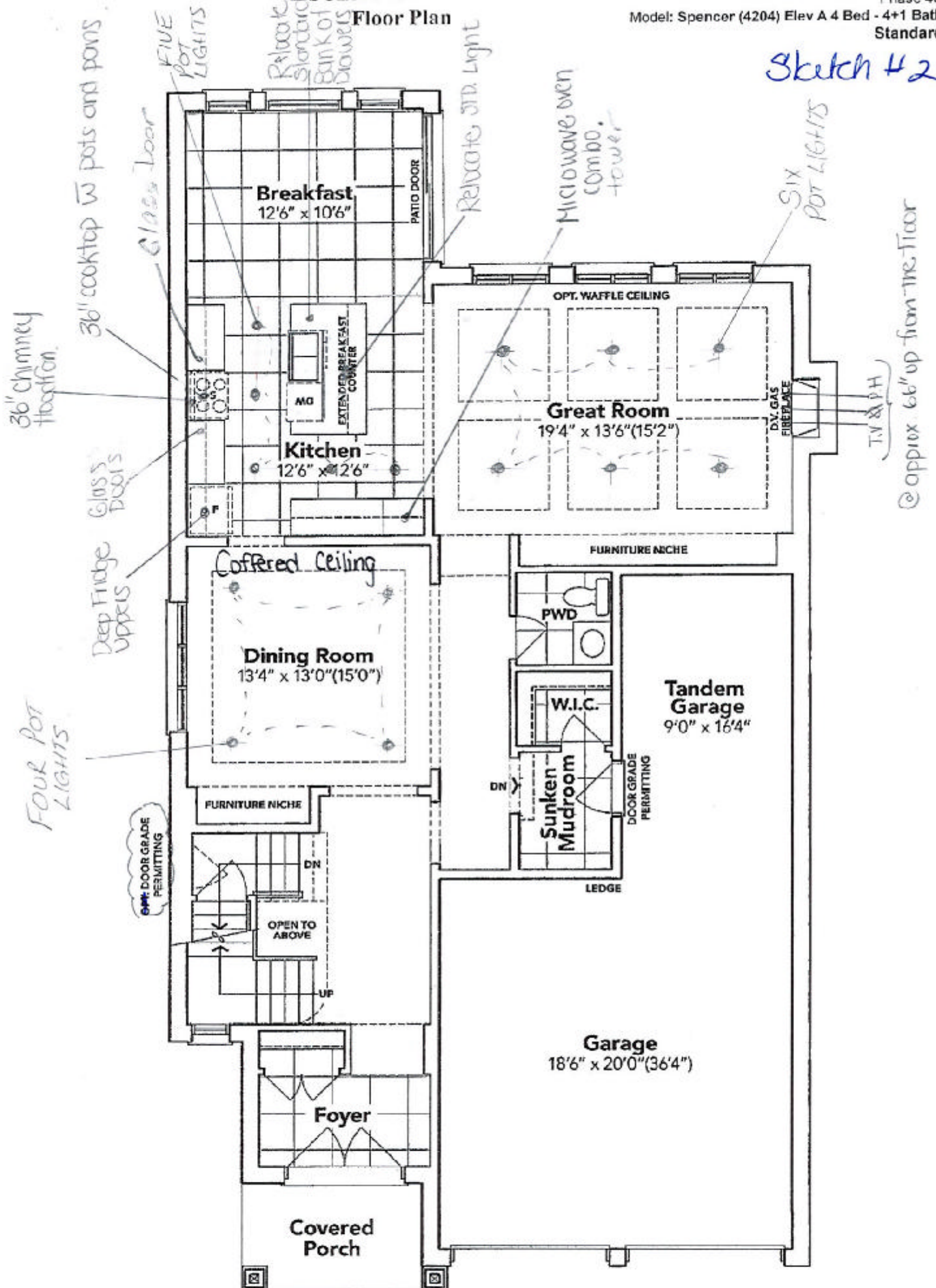
VENDOR TO INSTALL CAPPED GAS LINE (ROUGH-IN ONLY) AT REAR OF HOME FOR FUTURE BBQ LOCATION. LOCATION TO BE FINALIZED AT VENDORS SOLE DISCRETION. <i>Worksheet</i> Note:		
VENDOR TO INSTALL GAS LINE (ROUGH-IN ONLY) TO KITCHEN IN AT STOVE LOCATION (AS PER PLAN) TO INCLUDE 110V CODE REQUIREMENT. <i>Worksheet</i> Note:		
VENDOR TO SUPPLY & INSTALL AIR CONDITIONING UNIT, SIZED ACCORDINGLY, FROM VENDORS STANDARD SAMPLES. <i>Worksheet</i> Note:		
VENDOR TO INCLUDE LEVEL 1, 2CM GRANITE OR QUARTZ IN ALL BATHROOMS, AS PER PLAN, IN LIEU OF THE INCLUDED LAMINATE COUNTER TOPS. SELECTIONS TO BE MADE FROM BUILDERS STANDARD SAMPLES. <i>Worksheet</i> Note:		
VENDOR TO INCLUDE ENGINEERED HARDWOOD FLOORING THROUGHOUT THE SECOND FLOOR IN LIEU OF INCLUDED CARPET, AS PER PLAN, AND SELECTIONS AS OUTLINED IN SCHEDULE A FOR INCLUDED ENGINEERED HARDWOOD ON THE MAIN FLOOR. THIS HAS NO CASH VALUE. <i>Worksheet</i> Note:		

SCHEDULE "B-1"

Floor Plan

Lot 101
Phase 4B
Model: Spencer (4204) Elev A 4 Bed - 4+1 Bath
Standard

Sketch #2



GROUND FLOOR EL. A

+ B-Scale

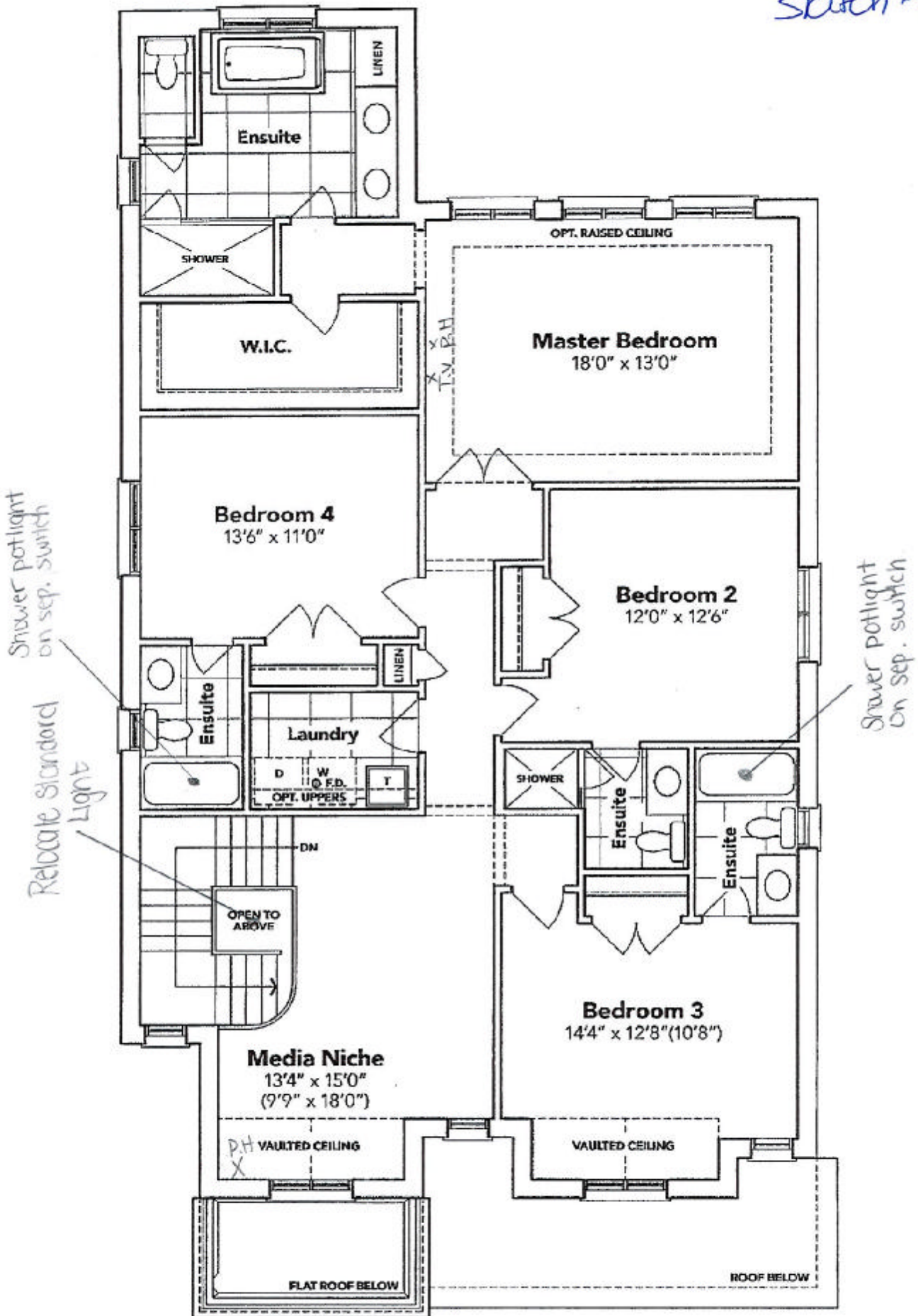
The floor plans and elevations shown are pre-construction plans and may be revised or improved as necessitated by architectural controls and the construction process. The measurements adhere to the rules and regulations of the TARIION Warranty Corporation's official method for the calculation of floor area. Materials, specifications and floor plans are subject to change without notice. All house renderings are artist's concept only. Actual usable floor space may vary from the stated floor area. All options shown are upgrades. E. & O. E.



SCHEDULE "B-1"
Floor Plan

Lot 101
Phase 4B
Model: Spencer (4204) Elev A 4 Bed - 4+1 Bath
Standard

Sketch #3



SECOND FLOOR EL. A

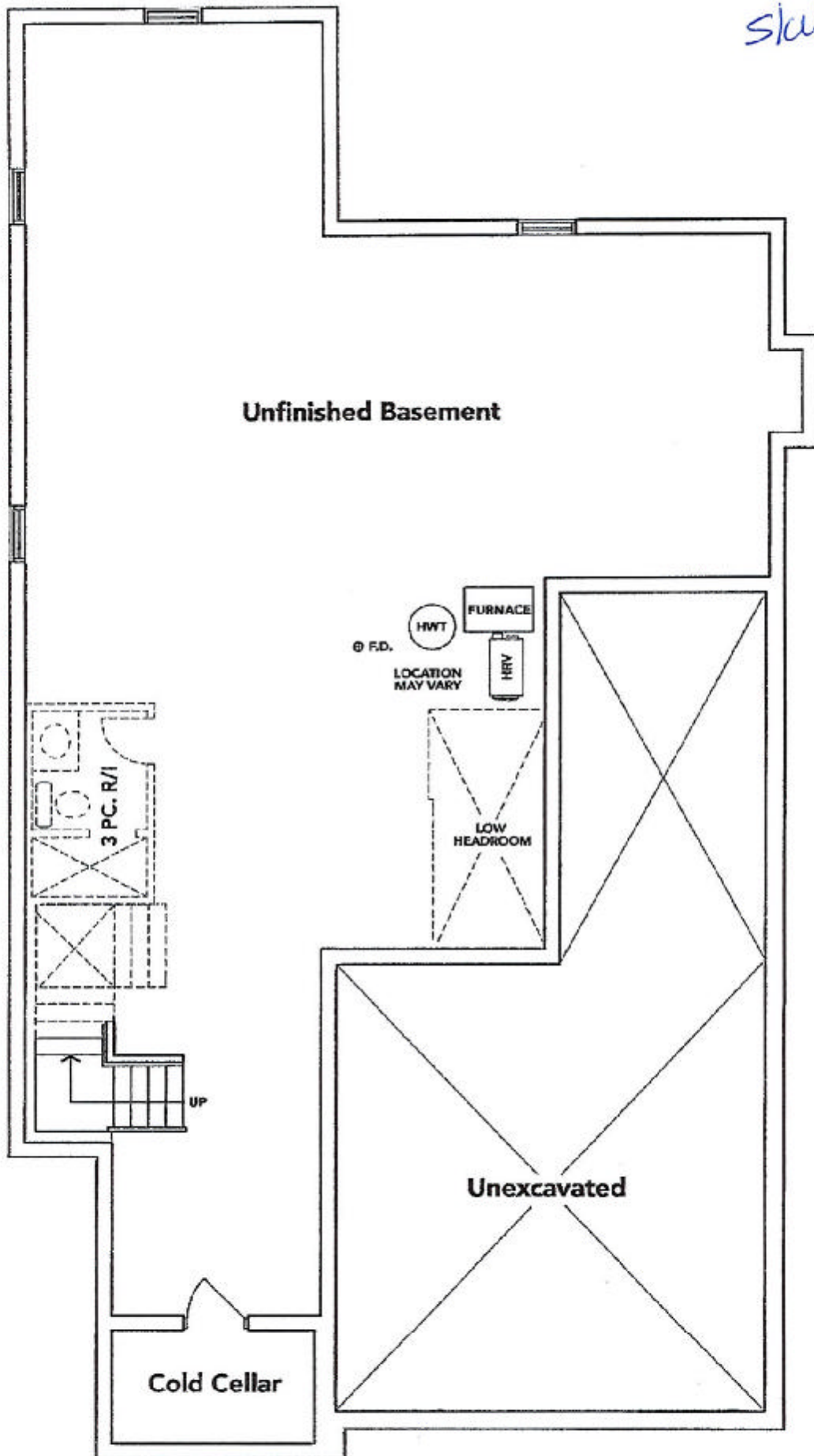
The floor plans and elevations shown are pre-construction plans and may be revised or improved as necessitated by architectural controls and the construction process. The measurements adhere to the rules and regulations of the TARIION Warranty Corporation's official method for the calculation of floor area. Materials, specifications and floor plans are subject to change without notice. All house renderings are artist's concept only. Actual usable floor space may vary from the stated floor area. All options shown are upgrades. E. & O. E.

SCHEDULE "B-1" - Page 2 of 3

SCHEDULE "B-1"
Floor Plan

Lot 101
Phase 4B
Model: Spencer (4204) Elev A 4 Bed - 4+1 Bath
Standard

Sketch #4



BASEMENT EL. A

B-S-111

The floor plans and elevations shown are pre-construction plans and may be revised or improved as necessitated by architectural controls and the construction process. The measurements adhere to the rules and regulations of the TARION Warranty Corporation's official method for the calculation of floor area. Materials, specifications and floor plans are subject to change without notice. All house renderings are artist's concept only. Actual usable floor space may vary from the stated floor area. All options shown are upgrades. E. & O. E.

SCHEDULE "B-1" - Page 1 of 3

B-S

Specifications

Air Flow Volume: 650 CFM
Electrical Connection: 120V/60Hz
Power Consumption: 240 Watts
Current: 2.0 Amps
Fan Speed: 1599 RPM
Finishes: Stainless Steel
Duct: 6" Round
Knock-out: 6" Round - Top Only
Dimensions: Width: 30"/36"
Height: 44 1/2"
Depth: 19 3/4"
Noise Level: Min. 2 Sones
Max. 7 Sones



SCB722 - Baffle Filter



Ordering Model Chart

Model	Colour	Knock-out	Duct	Size	Filter	CFM
SCB72230	Stainless Steel	6"	6" Round	30"	Baffle	650
SCB72236	Stainless Steel	6"	6" Round	36"	Baffle	650

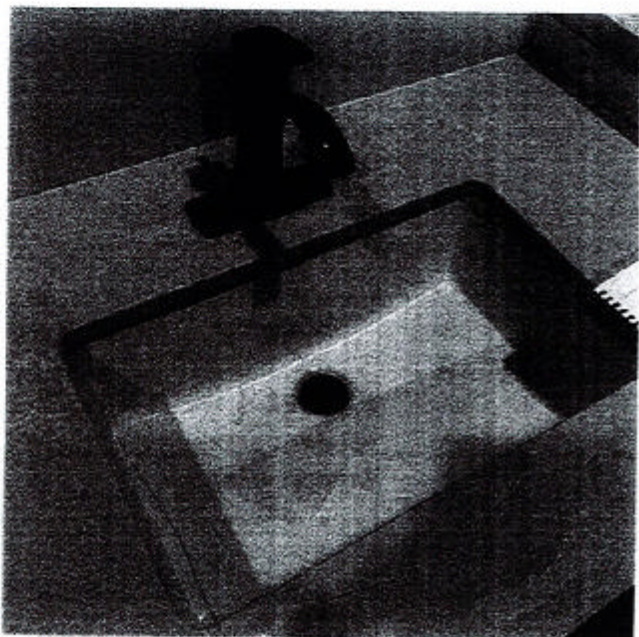
Notes

to B-sail



THAMES 4B: LOT 101

RE: upgraded under mount vanity sinks for
powder room, master ens, ens #2 #3 & #4



DISPLAY ITEMS

Sink (Item 9)

Contrac Catena Undermount
Model 4210CIY

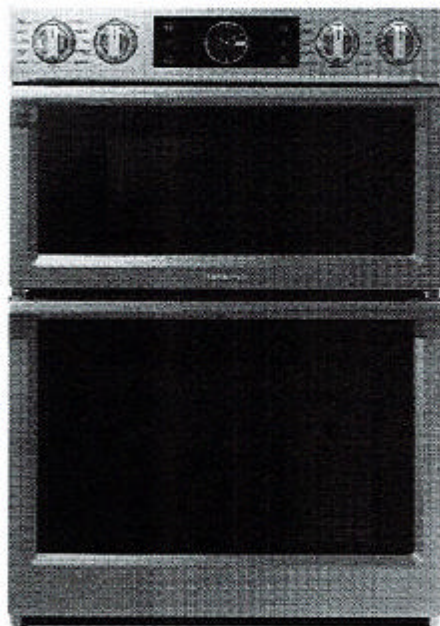
+ B. Savan

NQ70M7770DS

30" Microwave Combination Wall Oven

THAMES 4B: LOT 101

RE: 30" MICROWAVE COMBO WALL OVEN
SPEC'S



Signature Features

Steam Cook (Oven)

- Delivers moisture at precise times for a crisp, browned outside and tender inside.

Speed Cook (Microwave)

- Cook food faster and more evenly by using power convection.

Flex Duo™ (Oven)

- Cook two dishes at different temperatures simultaneously with the Smart Divider.

Available Colors



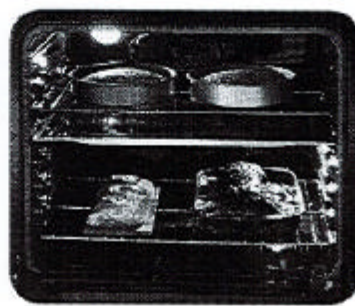
Stainless Steel (shown)



Black Stainless Steel



Steam Cook



Flex Duo™

Features

- Digital-Analog Controls
- 1.9/5.1 cu. ft. Capacity
- Hybrid Clean and Self-Clean (Oven)
- Gourmet Cook (Oven)
- Dual Convection (Oven)
- Wi-Fi Connectivity
- Wi-Fi Enabled Temperature Probe (Oven)
- LED Spotlights (Oven)
- Easy View Window
- 3 Heavy-Duty Racks including a Gliding Rack (Oven)

- Soft-Close Door (Oven)
- Ceramic Plate (Microwave)
- Rapid Preheat (Oven)
- Auto Latch Microwave Door
- 6 Oven Modes including Steam Bake and Steam Roast
- Blue LED Illuminated Knobs
- Broil Element
- Smart Control Key (Oven)
- 6 Rack Positions (Oven)
- Drop-Down Door Design
- LCD Display

Convenience

- Hidden Heating Element (Oven)
- Sabbath Mode (Oven)
- Delay Start (Oven)
- Proofing (Oven)
- Warming Mode (Oven)
- Kitchen Timer
- Child Safety Lock
- Convection Conversion

13.50-14

NQ70M7770DS

30" Microwave Combination Wall Oven

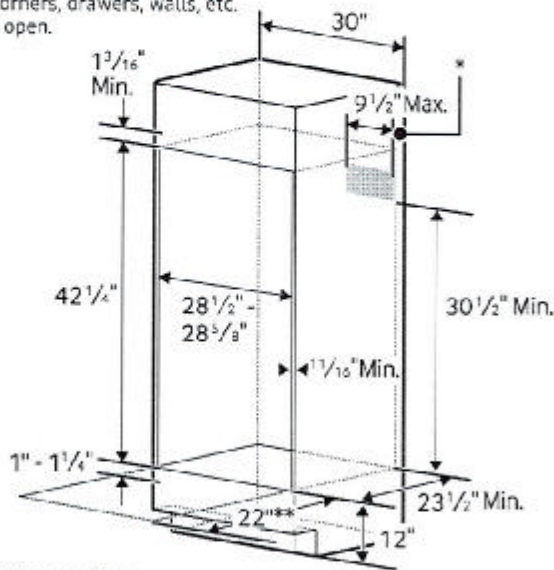
THAMES 4B: LOT 101
RE:30" MICROWAVE COMBO WALL OVEN
SPEC'S

Cabinet Dimensions

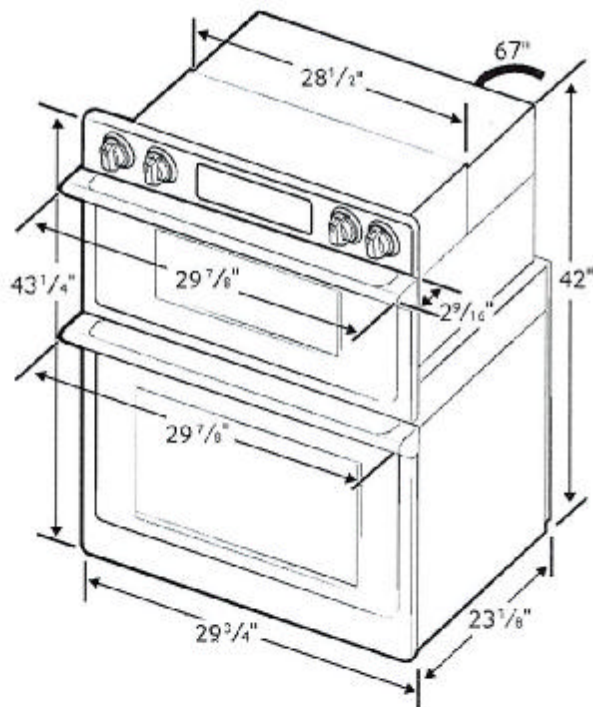
Combination Oven Installed in Cabinet

* Junction Box

** Allow a minimum of 22" for clearance to adjacent corners, drawers, walls, etc. when door is open.



Product Dimensions



Total Capacity: 1.9/5.1 cu. ft.

- Microwave: 1.9 cu. ft.
- Wall Oven: 5.1 cu. ft. total, 2.8/2.2 cu. ft.
- Hidden Bake Element
- Bake: 175°F–550°F
- Convection Bake: 175°F–550°F
- Convection Roast: 175°F–550°F
- Broil: Low-High
- Steam Bake: 230°F–550°F
- Steam Roast: 230°F–550°F
- Proofing
- Sabbath Mode

Warranty

One (1) Year All Parts and Labor
Ten (10) Years Parts Warranty for Magnetron

Product Dimensions & Weight (WxHxD)

Outside (Max) Combination Oven Dimensions:
29 7/8" x 43 1/4" x 25 11/16"

Combination Oven Cut-Out Dimensions:
28 1/2" x 42 1/4" x 23 1/2"

Weight: 119 lbs.

Shipping Dimensions & Weight (WxHxD)

Dimensions:
33 5/8" x 48 5/8" x 29 51/64"

Weight: 132.5 lbs.

Color

Stainless Steel
Black Stainless Steel

Model

NQ70M7770DS
NQ70M7770DG

UPC Code

887276195186
887276195162

RATING	
240V	9.5 kW
208V	7.2 kW
BREAKER SIZE	
240V	40 Amps
208V	40 Amps

Actual color may vary. Design, specifications, and color availability are subject to change without notice. Non-metric weights and measurements are approximate.
©2017 Samsung Electronics America, Inc. 25 Challenge Road, Ridgefield Park, NJ 07643. Tel: 800-SAMSUNG. samsung.com. Samsung is a registered trademark of Samsung Electronics Co., Ltd.

+ B. Song

NA36N7755TS

36" Gas Cooktop

THAMES 4B: LOT 101
RE: 36" GAS COOKTOP SPEC'S



Signature Features

22K True Dual-Power Burner

- Two independent heating burners offer intense heat and precise control to quickly boil water or temper chocolate.

Analog Controls with Digital Wi-Fi and Bluetooth® Technology

- The ultimate combination of analog comfort and digital technology delivers exceptional cooking performance.

Cast Iron Griddle

- Cook breakfast, grill sandwiches, or sauté vegetables on the removable griddle.

Available Colors



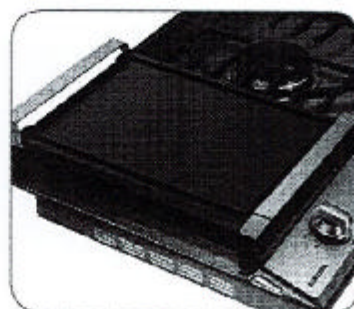
Stainless Steel (shown)



Fingerprint Resistant
Black Stainless Steel



22K True Dual-Power Burner



Cast Iron Griddle

Features

- Bluetooth® Connected to Hood
- Blue LED Lights
- Wi-Fi Connectivity
- Powerful Cooktop
 - Right Front: 13K BTU
 - Left Front: 9.5K BTU
 - Right Rear: 5K BTU
 - Left Rear: 9.5K BTU
 - Center: True Dual, 22K BTU (Brass)

- Cast Iron 3-Piece Grates
- Sealed Burners
- Burner On/Off Monitoring
- ADA Compliant

Convenience

- Wok Grate
- LP Conversion Kit



ADA Compliant

+ B-50-10

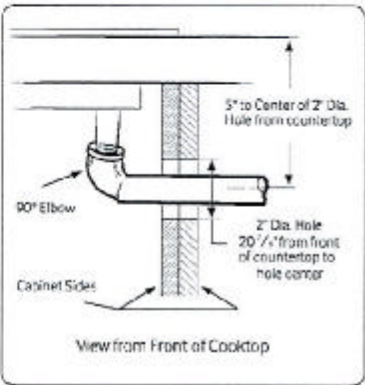
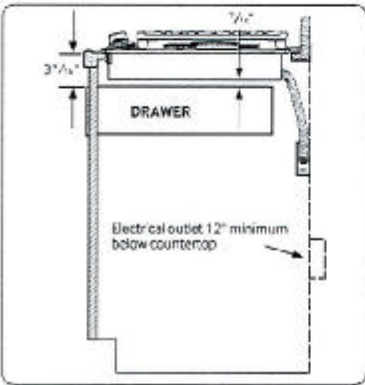
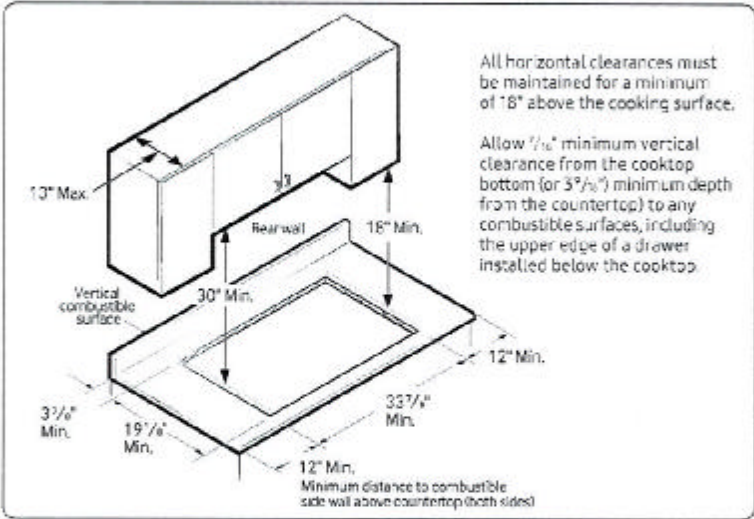
NA36N7755TS

36" Gas Cooktop

THAMES 4B: LOT 101
RE: 36" GAS COOKTOP SPEC'S

Installation Requirements

Countertop cut-out and minimum clearance dimensions:



Total Power (BTU)

59K

Power Source

120V / 60 Hz / 1A

Gas Cooktop (BTU)

- Right Front: 13K
- Left Front: 9.5K
- Right Rear: 5K Simmer
- Left Rear: 9.5K
- Center: 22K (True Dual)

Warranty

One (1) Year All Parts and Labor

Product Dimensions & Weight (WxHxD)

Outside (Max) Cooktop Dimensions:

36" x 5 41/12" x 22 1/8"

Cooktop Cut-Out Dimensions:

33 7/8" x 3 1/8" x 19 1/8"

Weight: 87.7 lbs. (88.4 lbs. Fingerprint Resistant Black Stainless Steel)

Shipping Dimensions & Weight (WxHxD)

Dimensions: 40 9/16" x 10 5/8" x 25 3/8"

Weight: 95.9 lbs. (97.2 lbs. Fingerprint Resistant Black Stainless Steel)

Color

Stainless Steel

Model

NA36N7755TS

UPC Code

887276281766

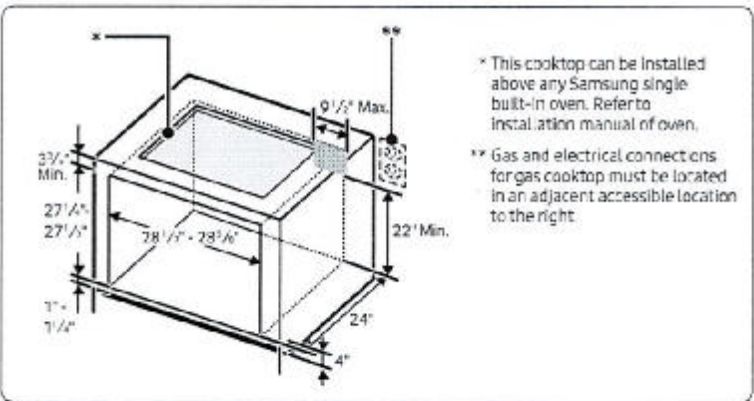
Fingerprint Resistant

Black Stainless Steel

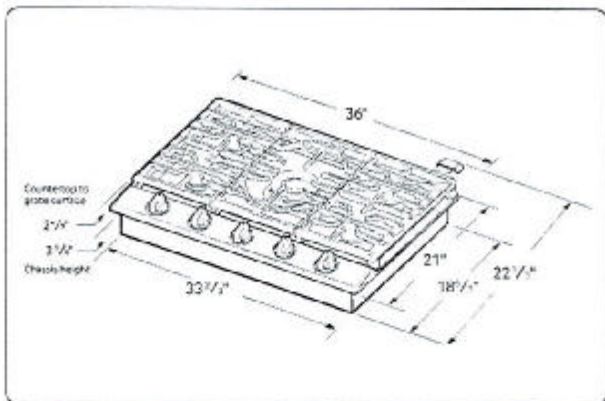
NA36N7755TG

887276281759

Installing Over a Single Oven



Cooktop Dimensions



Actual color may vary. Design, specifications, and color availability are subject to change without notice. Non-metric weights and measurements are approximate.
©2018 Samsung Electronics America, Inc., 85 Challenger Road, Ridgefield Park, NJ 07660. Tel: 800-SAMSUNG.samsung.com. Samsung is a registered trademark of Samsung Electronics Co., Ltd.

135014

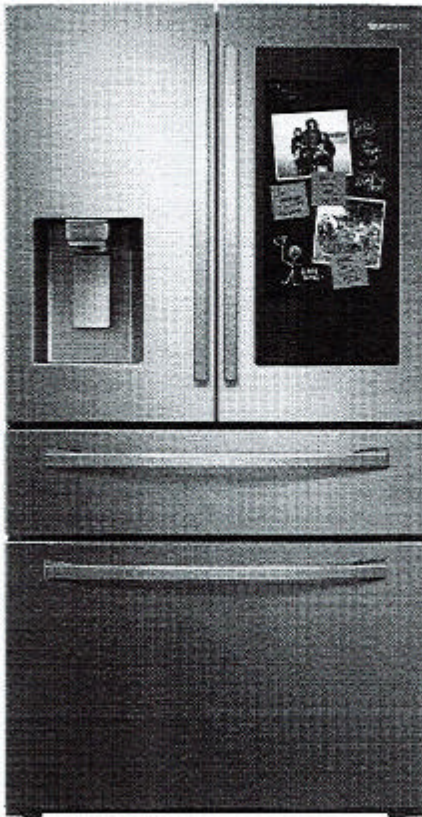
RF28R7551SR

28 cu. ft. 4-Door French Door Refrigerator
with 21.5" Connected Touchscreen Family Hub™

THAMES 4B: LOT 101

RE: FRIDGE SPEC'S

** NO WATER LINE HAS BEEN PURCHASED



Signature Features

Food

- See inside your refrigerator from anywhere, with 3 built-in cameras.
- Create and share shopping lists, plan meals based on the food inside your refrigerator and automatically set expiration dates.

Family

- Create your own home screen with Family Board, by adding personalized pictures, stickers and handwritten notes.
- Customize your screen saver with picture slide show, weather and animations.

Fun

- Stream your favorite music service directly on your Family Hub™ screen.
- Mirror your Samsung TV or Samsung phone, right on your Family Hub™.

Your Home

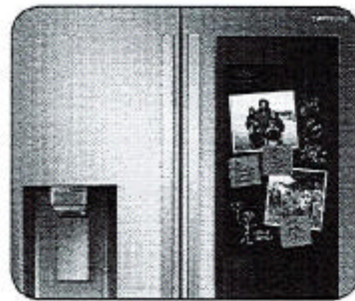
- Access your smart devices and Samsung appliances from your Family Hub™ screen; set lights, hear and speak to someone at your front door, monitor your baby's room and receive laundry end-of-cycle notifications.
- Receive Wi-Fi updates so your fridge stays up to date with the latest features and apps.

Bixby Voice 2.0

- Intelligent voice assistant allows hands-free navigation.
- Recognizes user's voice and provides a personalized experience.

Available Colors

-  Fingerprint Resistant Stainless Steel (shown)
-  Fingerprint Resistant Black Stainless Steel
-  Fingerprint Resistant Tuscan Stainless Steel



Family Hub™



FlexZone™ Drawer

Convenience

- FlexZone™ Drawer with 4 Temperature Settings and Smart Divider
- Wi-Fi and Bixby Enabled
- Adjustable Shelves for Tall Oversized Items
- Auto Pull-Out Upper Freezer Drawer
- Water Filter Indicator

Design

- Fingerprint Resistant Finish
- Modern External Filtered Water and Ice Dispenser
- High Efficiency LED Lighting
- EZ-Open Handle™ on Freezer Door and FlexZone™ Drawer
- Tempered Glass Spill-Proof Shelves
- Gallon Door Bins
- Dispenser Light

Performance

- Twin Cooling Plus®
- Metal Cooling
- 25W Built-In Speaker
- Ice Max - Stores up to 4.2 lbs of ice
- ENERGY STAR® Compliant
- Power Freeze and Power Cool Options
- Two Humidity-Controlled Crispers
- CoolTight Door
- Door Alarm

Rating



ENERGY STAR® rated:
755 kWh/yr

B. GARCIA

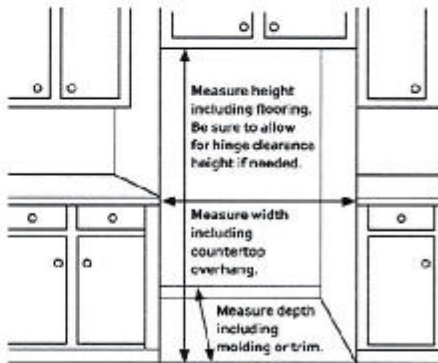
RF28R7551SR

28 cu. ft. 4-Door French Door Refrigerator with 21.5" Connected Touchscreen Family Hub™

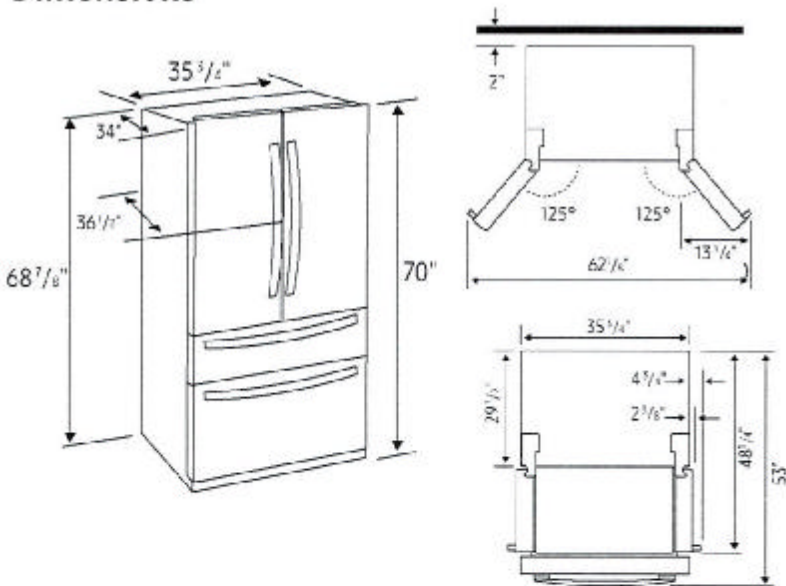
Installation Specifications

1. Measure the height, width and depth of the opening, making sure to include baseboards, molding tile, countertop overhang, etc. Check to be sure there is enough room to open the door (consider walls, islands or other obstacles when measuring).
 2. Refer to illustration below to determine dimensions.
 3. Allow 2.5" of clearance on hinge side of refrigerator when installing next to a wall where handle may make contact.
 4. Allow 1" minimum clearance at rear for proper air circulation and water/electrical connections. Allow a 3/8" minimum clearance at sides and top for ease of installation.
 5. Ensure each door and entryway in the home is wide enough for the refrigerator to be moved through easily.
- For optimal usage and to be able to open refrigerator doors completely, do not install next to a wall.

Please note: The following dimension and cutout information is for planning purposes only. For complete installation details, consult manual packed with product, or download manual online at samsung.com.



Dimensions



THAMES 4B: LOT 101

RE: FRIDGE SPEC'S

** NO WATER LINE HAS BEEN PURCHASED**

Total Capacity: 27.7 cu. ft.

Refrigerator: 15.6 cu. ft.

- 2 Humidity-Controlled Crispers
- 5 Tempered Glass Spill-Proof Shelves
 - 1 Slide-In
 - 1 Slide-Out
 - 1 Foldable Half
 - 2 Fixed
- 6 Door Bins
 - Right Door: 3 Door Bins
 - Left Door: 3 Regular Bins
- Metal Cooling
- High Efficiency LED Lighting

FlexZone™ Drawer: 3.8 cu. ft.

- EZ-Open Handle™
- 4 Temperature Zones with Smart Divider
 - Meat/Fish (29°F)
 - Cold Drinks (33°F)
 - Deli/Snacks (37°F)
 - Wine/Party Dishes (42°F)

Freezer: 8.3 cu. ft.

- EZ-Open Handle™
- Take Out Box
- 1 Drawer Divider
- High Efficiency LED Lighting

Warranty

One (1) Year Parts and Labor on Refrigerator

Five (5) Years Parts and Labor on Sealed Refrigeration System Only*

Ten (10) Years Parts and Five (5) Years Labor on Digital Inverter Compressor

*Compressor, evaporator, condenser, drier and connecting tubing.

Product Dimensions & Weight

Dimensions (WxHxD with hinges, handles and doors): 35 3/4" x 70" x 36 1/2"

Dimensions (WxHxD without hinges and door): 35 3/4" x 68 7/8" x 29 1/2"

Dimensions (WxHxD with hinge and door, no handle): 35 3/4" x 70" x 34"

Weight: 346 lbs

Shipping Dimensions & Weight (WxHxD)

Dimensions: 38 1/4" x 75 1/4" x 36 1/4"

Weight: 368 lbs

Color	Model #	UPC Code
Fingerprint Resistant Stainless Steel	RF28R7551SR	887276345321
Fingerprint Resistant Black Stainless Steel	RF28R7551SG	887276345314
Fingerprint Resistant Tuscan Stainless Steel	RF28R7551DT	887276345307

Actual color may vary. Design, specifications, and color availability are subject to change without notice. Non-metric weights and measurements are approximate.

©2019 Samsung Electronics America, Inc., 85 Challenger Road, Ridgefield Park, NJ 07660. Tel: 800-SAMSUNG, samsung.com. Samsung is a registered trademark of Samsung Electronics Co., Ltd.

+ B-s-a-g