



CONSTRUCTION SUMMARY

Kingsmen (Thames) Inc. / Havelock Corners (Kingsmen)

Lot/Unit: 118    Phase/Building: 4B    Model/Floor Plan: Arthur (4205) Elev C 4 Bed - 4+1 Bath

CABINETRY

Inv.5079	1 - See fridge spec's attached.	
Line 66423	Note: NO ROUGH IN WATER LINE HAS BEEN PURCHASE.	
11Aug21 / 11Aug21		

COUNTER TOP

Inv.5079	1 - As per Schedule "PE" Vendor to include level 1, 2cm granite or quartz in all bathrooms, as per plan, in lieu of the includd laminate counter tops. Selections to be made from Vendors standard samples	
Line 66376	Note:	
11Aug21 / 11Aug21		

ELECTRICAL

Inv.5079	1 - To supply and install the standard T.V Rough-in, in the Great Room and Master Ensuite.. see sketch #1 and #2	
Line 66417	Note: Install the T.V. rough in at approx. 66 " +- up from the floor centered + - to the F/P mantle In the great room .	
11Aug21 / 11Aug21		
Inv.5079	1 - To supply and install the standard Phone (CAT 5) rough-in, in the Great Room, Master Ensuite and Computer Niche.. see sketch #1 and #2	
Line 66418	Note: Install the Phone rough in at approx. 66 " +- up from the floor centered + - to the F/P mantle in the great room	
11Aug21 / 11Aug21		
Inv.5079	1 - To SUPPLY AND INSTALL AN ADDITIONAL BASIC RECEPTACLE (NOT DEDICATED) centered +- above the F/P Mantle in the Great Room at approx. 66" +- up from the floor... see sketch #1	
Line 66419	Note:	
11Aug21 / 11Aug21		
Inv.5079	1 - To SUPPLY AND INSTALL EXTRA CEILING BOX ROUGH IN CAPPED (ON A SEPARATE SWITCH) over the breakfast bar in the kitchen... see sketch #1	
Line 66420	Note:	
11Aug21 / 11Aug21		

HARDWOOD

Inv.5079	1 - As per Schedule "PE": Vendor to include engineered hardwood flooring throughout the second floor in lieu of included carpet, as per plan and selections as outlined in schedule A for included engineered hardwood on the main floor. This has no cash value	
Line 66377	Note:	
11Aug21 / 11Aug21		

HEATING AND AIR CONDITIONING

Inv.5079	1 - As per Schedule "PE": Vendor to supply and install air conditioning unit, sized accordingly from Vendor's standard samples	
Line 66375	Note:	
11Aug21 / 11Aug21		

HVAC

Inv.5079	1 - To supply and install a humifier..	
Line 66414	Note:	
11Aug21 / 11Aug21		

Kingsmen (Thames) Inc. / Havelock Corners (Kingsmen)

Lot/Unit: 118    Phase/Building: 4B    Model/Floor Plan: Arthur (4205) Elev C 4 Bed - 4+1 Bath

Inv.5079	1 - As per Schedule "PE": Vendor to install capped gas line (ROUGH-IN ONLY) at rear of home for future BBQ location. Location to be finalized at Vendors sole discretion.	
Line 66373	Note:	
11Aug21 / 11Aug21		
Inv.5079	1 - As per Schedule "PE" Vendor to install gas line (Rough in ONLY) to kitchen in at stove location (as per plan) to include 110V Code requirement	
Line 66374	Note:	
11Aug21 / 11Aug21		

MISCELLANEOUS

Inv.5079	1 - As per Schedule "PE": Vendor to include seamless glass doors as per plan, in Master Ensuite and Bedroom #3 Ensuite	
Line 66378	Note:	
11Aug21 / 11Aug21		

PAINT AND DRYWALL

Inv.5079	1 - To install the coffered ceiling in the Dining Room, as per plan.. see sketch #1	
Line 66415	Note:	
11Aug21 / 11Aug21		

PLUMBING

Inv.5079	6 - To supply and install VANITY SINK - CONTRAC CATENA UNDERMOUNT - MODEL 4210CIY in the PWD, Master Ensuite, Bedroom #2, #3 and #4 in lieu of the standard topmount sinks.. see spec's	
Line 66421	Note: STILL TO INSTALL THE STANDARD FAUCETS	
11Aug21 / 11Aug21		
Inv.5079	1 - To supply & install the MOEN soap dispencer in the kitchen model # 3942 in chrome... see spec's ... see sketch # 1 for location	
Line 66422	Note:	
11Aug21 / 11Aug21		



CONSTRUCTION SUMMARY

Kingsmen (Thames) Inc. / Havelock Corners (Kingsmen)

Lot/Unit: 118    Phase/Building: 4B    Model/Floor Plan: Arthur (4205) Elev C 4 Bed - 4+1 Bath

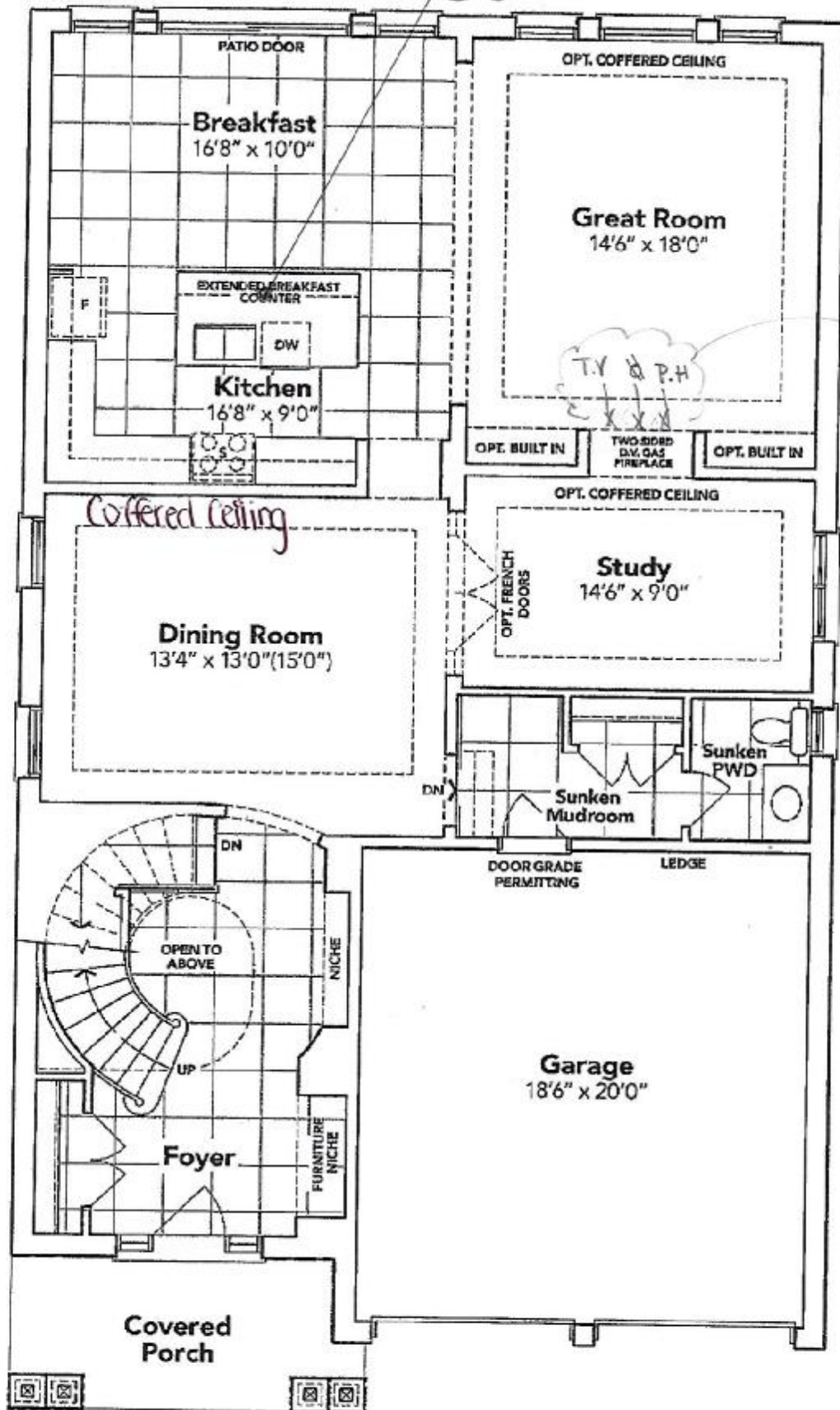
EXTRAS AS PER OFFER

5 FREE APPLIANCES ? STAINLESS STEEL FRONT - FRIDGE: STOVE AND DISHWASHER. WHITE WASHER AND DRYER (SUPPLIED ONLY, NOT INSTALLED, FROM BUILDERS STANDARD LINE). A BAD BOY APPLIANCES VOUCHER WILL BE GIVEN BY OUR DECOR CONSULTANT AT THE TIME OF BOOKING YOUR C <i>Worksheet</i> Note:	
VENDOR TO INSTALL CAPPED GAS LINE (ROUGH-IN ONLY) AT REAR OF HOME FOR FUTURE BBQ LOCATION.   LOCATION TO BE FINALIZED AT VENDORS SOLE DISCRETION. <i>Worksheet</i> Note:	
VENDOR TO INSTALL GAS LINE (ROUGH-IN ONLY) TO KITCHEN IN AT STOVE LOCATION (AS PER PLAN) TO INCLUDE 110V CODE REQUIREMENT. <i>Worksheet</i> Note:	
VENDOR TO SUPPLY & INSTALL AIR CONDITIONING UNIT, SIZED ACCORDINGLY, FROM VENDORS STANDARD SAMPLES. <i>Worksheet</i> Note:	
VENDOR TO INCLUDE LEVEL 1, 20CM GRANITE OR QUARTZ IN ALL BATHROOMS, AS PER PLAN, IN LIEU OF THE INCLUDED LAMINATE COUNTER TOPS.   SELECTIONS TO BE MADE FROM BUILDERS STANDARD SAMPLES. <i>Worksheet</i> Note:	
VENDOR TO INCLUDE ENGINEERED HARDWOOD FLOORING THROUGHOUT THE SECOND FLOOR IN LIEU OF INCLUDED CARPET, AS PER PLAN, AND SELECTIONS AS OUTLINED IN SCHEDULE A FOR INCLUDED ENGINEERED HARDWOOD ON THE MAIN FLOOR.   THIS HAS NO CASH VALUE. <i>Worksheet</i> Note:	
Vendor to include seamless glass shower doors as per plan,in Master ensuite and Bedroom #3 ensuite. <i>Worksheet</i> Note:	

SCHEDULE "B-1"  
Floor Plan

Lot 118  
Phase 4B  
Model: Arthur (4205) Elev C 4 Bed - 4+1 Bath  
Standard

Sketch #1



GROUND FLOOR EL. C

Sandeep Marahar

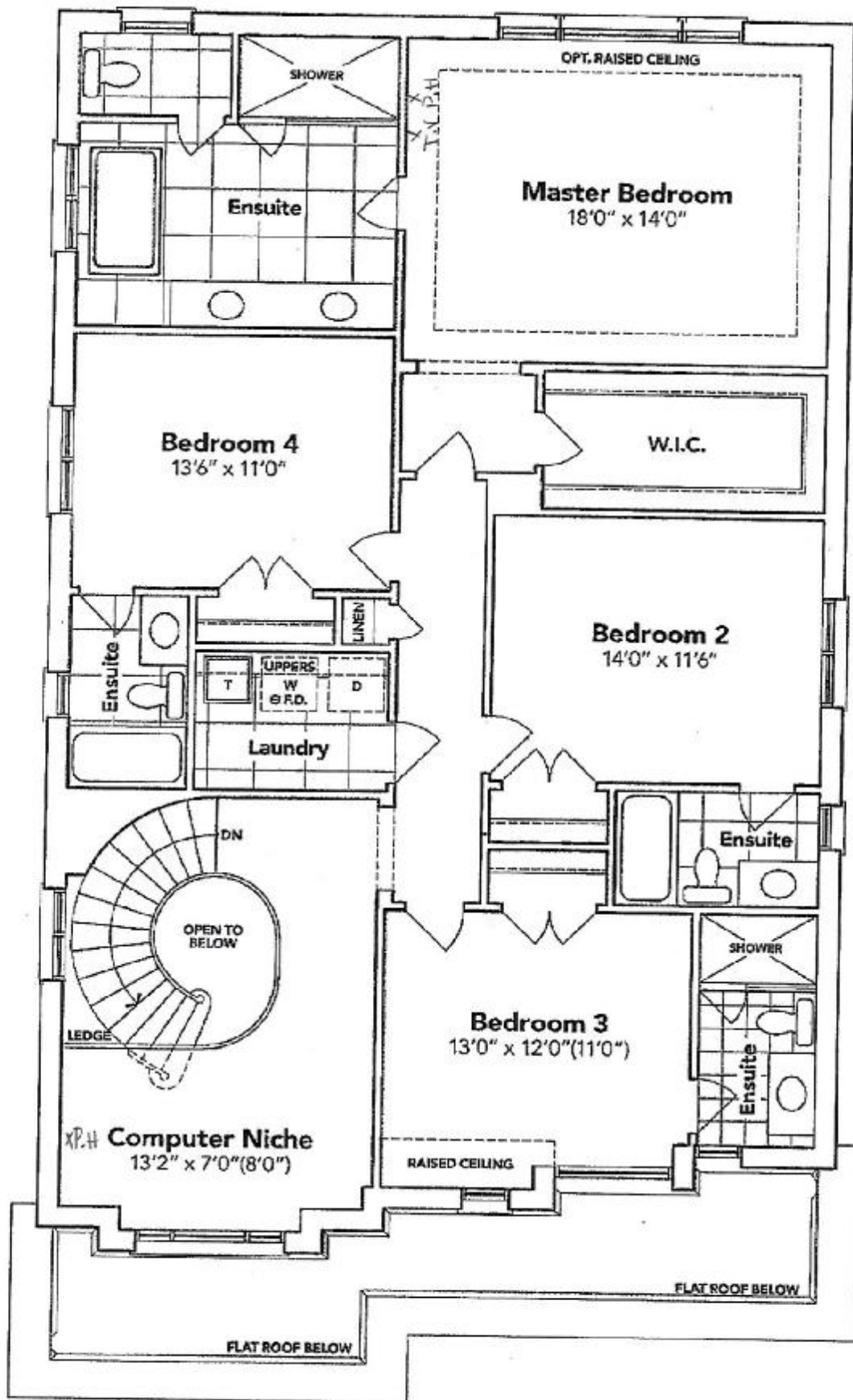
The floor plans and elevations shown are pre-construction plans and may be revised or improved as necessitated by architectural controls and the construction process. The measurements adhere to the rules and regulations of the TARIION Warranty Corporation's official method for the calculation of floor area. Materials, specifications and floor plans are subject to change without notice. All house renderings are artist's concept only. Actual usable floor space may vary from the stated floor area. All options shown are upgrades. E. & O. E.



**SCHEDULE "B-1"**  
**Floor Plan**

Lot 118  
Phase 4B  
Model: Arthur (4205) Elev C 4 Bed - 4+1 Bath  
Standard

Sketch #2



**SECOND FLOOR EL. C**

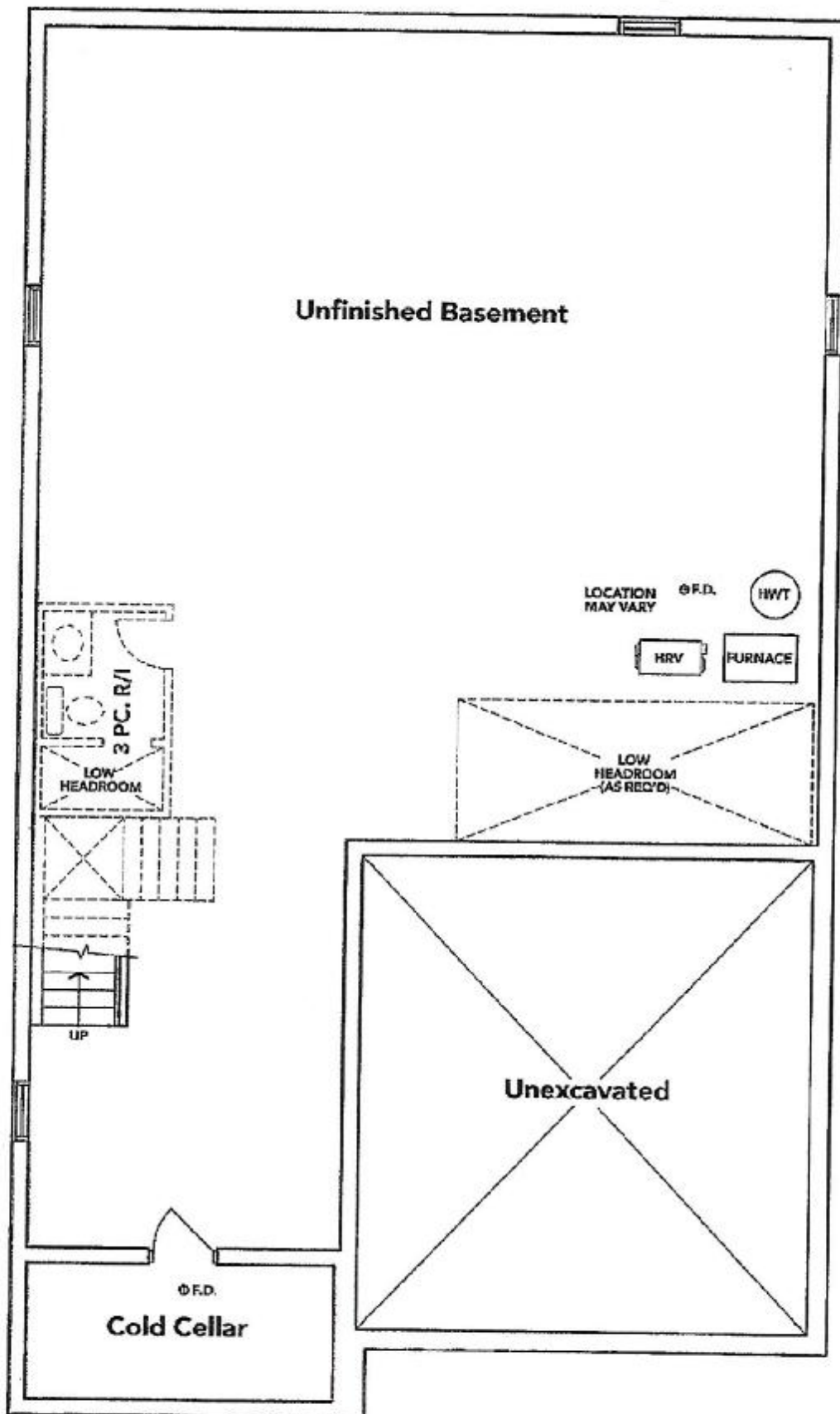
+ Sandeep Marahar

The floor plans and elevations shown are pre-construction plans and may be revised or improved as necessitated by architectural controls and the construction process. The measurements adhere to the rules and regulations of the TARION Warranty Corporation's official method for the calculation of floor area. Materials, specifications and floor plans are subject to change without notice. All house renderings are artist's concept only. Actual usable floor space may vary from the stated floor area. All options shown are upgrades. E. & O. E.

**SCHEDULE "B-1"**  
**Floor Plan**

Lot 118  
Phase 4B  
Model: Arthur (4205) Elev C 4 Bed • 4+1 Bath  
Standard

Sketch #3



**BASEMENT EL. C**

The floor plans and elevations shown are pre-construction plans and may be revised or improved as necessitated by architectural controls and the construction process. The measurements adhere to the rules and regulations of the TARION Warranty Corporation's official method for the calculation of floor area. Materials, specifications and floor plans are subject to change without notice. All house renderings are artist's concept only. Actual usable floor space may vary from the stated floor area. All options shown are upgrades. E. & O. E.

SCHEDULE "B-1" - Page 1 of 3

THAMES 4B: LOT 118  
RE: UPG. SOAP DISPENSER



**Transitional Soap or  
Lotion Dispenser**

Model 3942

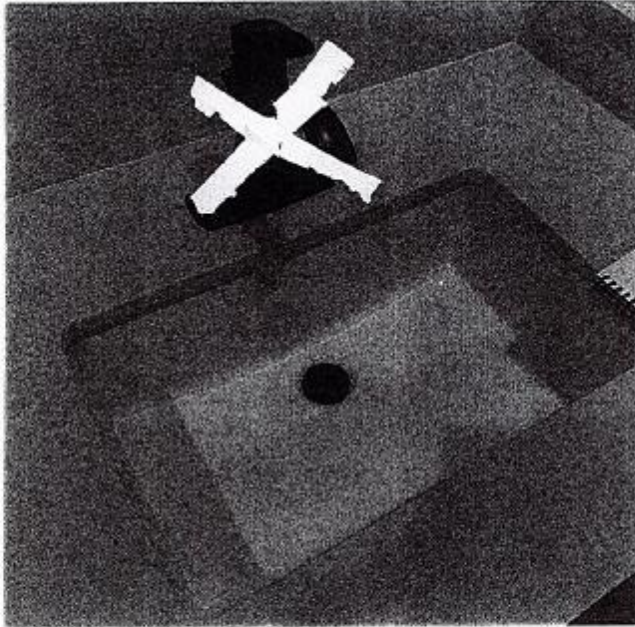
Chrome

+

A handwritten signature in blue ink, appearing to read "Sandeep Marahar", written over a horizontal line.

X Sandeep Marahar


THAMES 4B: LOT 118  
RE: UPG. SINKS (PWD, MASTER ENSUITE,  
BEDROOM #2, #3 & #4)



## DISPLAY ITEMS

### **Sink ( Item 9)**

Contrac Catena Undermount  
Model 4210CIY

+ 

+ Sandeep Marathe



# RF26HFPNBSR

THAMES 4B: LOT 118  
RE: FRIDGE SPEC'S

26 cu. ft. French Door Refrigerator with Internal Filtered Water Dispenser

\*No waterline has been purchased\*

## Features

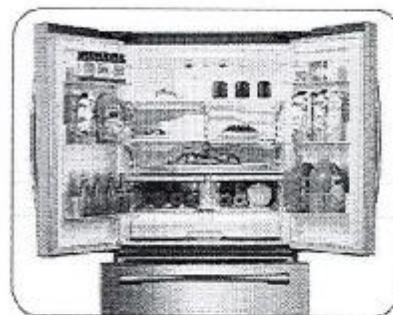
- Large Capacity – 26 cu. ft.
- Internal Filtered Water Dispenser
- Additional Filtered Ice Maker in the Freezer
- High-Efficiency LED Lighting
- Twin Cooling Plus System<sup>®</sup>
- ENERGY STAR<sup>®</sup> Compliant
- CoolSelect Pantry<sup>™</sup> with Temperature Control
- Power Freeze and Power Cool Options
- Two Humidity-Controlled Crispers
- Tempered Glass Spill-Proof Shelves
- Gallon Door Bins
- EZ-Open Handle<sup>™</sup> on Freezer Door
- Auto Pull-Out Upper Freezer Drawer

## Convenience

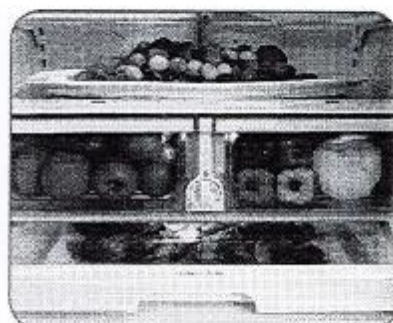
- CoolTight Door
- Door Alarm
- Water Filter Indicator
- Removable Ice Caddy



**ENERGY STAR<sup>®</sup> Rated:**  
CEE Tier 3: More Efficient  
(30% more efficient than Federal Standard)  
535 kWh/yr



French Door Design



CoolSelect Pantry<sup>™</sup> with Temperature Control

## Available Color



Stainless Steel

## Signature Features

### FILTERED WATER

- Get great-tasting, filtered water directly from your refrigerator. Spend less time and money buying bottled water.

### TWIN COOLING PLUS<sup>®</sup>

- Refrigerator air is kept at higher, near-commercial grade humidity levels to keep perishable fruits and vegetables fresher longer.
- Drier freezer air means less freezer burn for better-tasting frozen foods.

### HIGH-EFFICIENCY LED LIGHTING

- High-efficiency design beautifully lights up the interior so you're able to quickly spot what you want.
- Sleek design saves more space than traditional incandescent light bulbs.



**Ranked "Highest in customer satisfaction with French Door refrigerators, in a tie."\***

—J.D. Power

**SAMSUNG**

\*

+ Sundeep Marahar

# RF26HFPNBSR

THAMES 4B: LOT 118  
RE: FRIDGE SPEC'S

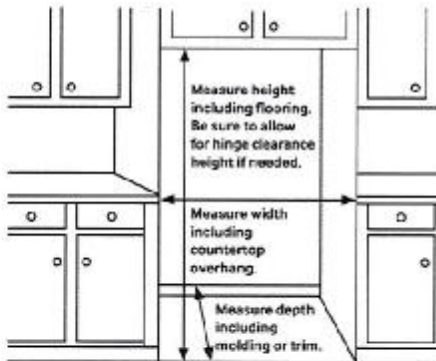
26 cu. ft. French Door Refrigerator with Internal Filtered Water Dispenser

\* No waterline has been purchased \*

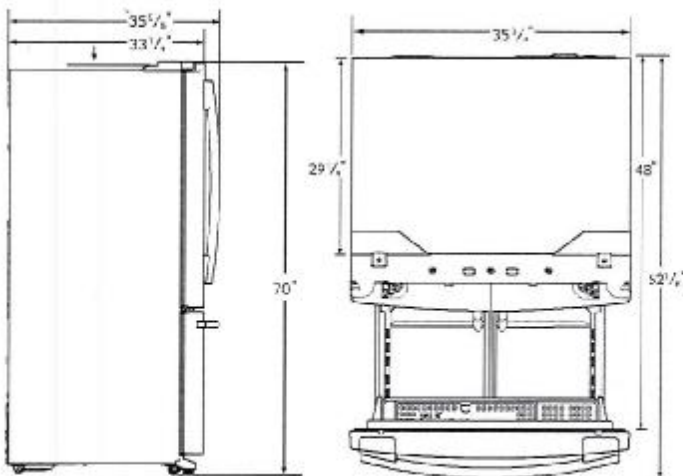
## Installing Your Refrigerator

1. Measure the height, width and depth of the opening, making sure to include baseboards, molding tile, countertop overhang, etc. Check to be sure there is enough room to open the door (consider walls, islands or other obstacles when measuring).
2. Refer to illustration below to determine dimensions.
3. Allow 2" of clearance on hinge side of refrigerator when installing next to a wall where handle may make contact.
4. Allow 1" minimum clearance at rear for proper air circulation and water/electrical connections. Allow a 3/8" minimum clearance at sides and top for ease of installation.
5. Ensure each door and entry way in the home is wide enough for the refrigerator to be moved through easily.

Please note: The following dimension and cutout information is for planning purposes only. For complete installation details consult manual packed with product, or download manual on-line at [samsung.com](http://samsung.com).



## Dimensions



## Total Capacity: 25.5 cu. ft.

### Refrigerator: 17.5 cu. ft.

- Internal Filtered Water Dispenser
- CoolSelect Pantry™ with Temperature Control
- 2 Humidity-Controlled Crispers
- 5 Tempered Glass Spill-Proof Shelves
- 6 Clear Door Bins
  - Right Door: 3 Gallon Bins
  - Left Door: 3 Gallon Bins
- High-Efficiency LED Lighting

### Freezer: 8.0 cu. ft.

- EZ-Open Handle™
- 1 Large Opaque Bin with Divider
- Auto Pull-Out Upper Drawer
- Filtered Ice Maker (Cubed)
- High-Efficiency LED Lighting

## Accessories

Water Filter: HAF-CIN

## Warranty

One (1) Year Parts and Labor on Refrigerator

Five (5) Years Parts and Labor on Sealed Refrigeration System Only\*

Ten (10) Years Parts and Five (5) Years Labor on Digital Inverter Compressor

\*Compressor, evaporator, condenser, drier, connecting tubing

## Product Dimensions & Weight

Dimensions (WxHxD with hinges, handles and doors):

35 1/4" x 70" x 35 5/8"

Dimensions (WxHxD without hinges and door):

35 1/4" x 68 5/8" x 29 1/4"

Dimensions (WxHxD with hinge and door, no handle):

35 1/4" x 70" x 33 1/4"

Weight: 306.4 lbs.

## Shipping Dimensions & Weight (WxHxD)

Dimensions: 38 5/8" x 75 3/4" x 36 1/4"

Weight: 332.9 lbs.

Color	Model #	UPC Code
Stainless Steel	RF26HFPNBSR	887276042305

**SAMSUNG**

\*Samsung received the highest numerical score for French door refrigerators in a tie in the proprietary D. Power 2014 Kitchen Appliance Study™. Study based on 15,380 total responses measuring 10 French door refrigerators. Brands and measures opinions of consumers about their new appliance purchased in the past 24 months. Proprietary study results are based on experiences and perceptions of consumers surveyed in January-March 2014. Your experiences may vary. Visit [dpower.com](http://dpower.com).

Actual color may vary. Design, specifications, and color availability are subject to change without notice. Non-metric weights and measurements are approximate.

©2014 Samsung Electronics America, Inc. 65 Cholla Road, Ridgefield Park, NJ 07660. Tel: 800-SAMSUNG, [samsung.com](http://samsung.com). Samsung is a registered trademark of Samsung Electronics Co., Ltd.



+ Sandeep Narayan