

Kingsmen (Thames) Inc. / Havelock Corners (Kingsmen)

Lot/Unit: 78 Phase/Building: 4B Model/Floor Plan: Arthur (4205) Elev B 4 Bed - 4+1 Bath

CABINETRY

Inv.4872	1 - To supply & install the OPTIONAL BUILT IN'S in the great room... see sketch # 1 See sketch attached for design of optional built in's SAME CABINETRY AS THE KITCHEN.	
Line 62579	Note:	
21Jan21 / 21Jan21		
Inv.4872	1 - To supply & instal the CABINETRY - KITCHEN - UPGRADE - CLASSIC III in lieu of the standad cabinetry... see colour chart for details.	
Line 62599	Note:	
21Jan21 / 21Jan21		
Inv.4872	1 - To supply & intall the CABINETRY - VANITY - POWDER ROOM - UPGRADE - CLASSIC III in lieu of the standard cabinetry... see colour chart for details.	
Line 62600	Note:	
21Jan21 / 21Jan21		
Inv.4872	1 - To supply & intall the CABINETRY - VANITY - MASTER ENSUIT BATHROOM - UPGRADE - CLASSIC III in lieu of the standard cabinetry... see colour chart for details.	
Line 62601	Note:	
21Jan21 / 21Jan21		
Inv.4872	1 - To supply & intall the CABINETRY - VANITY - ENS. #2'S BATHROOM - UPGRADE - CLASSIC III in lieu of the standard cabinetry... see colour chart for details.	
Line 62602	Note:	
21Jan21 / 21Jan21		
Inv.4872	1 - To supply & intall the CABINETRY - VANITY - ENS. #3 'S BATHROOM - UPGRADE - CLASSIC III in lieu of the standard cabinetry... see colour chart for details.	
Line 62604	Note:	
21Jan21 / 21Jan21		
Inv.4872	1 - To supply & intall the CABINETRY - VANITY - ENS. #4 'S BATHROOM - UPGRADE - CLASSIC III in lieu of the standard cabinetry... see colour chart for details.	
Line 62605	Note:	
21Jan21 / 21Jan21		
Inv.4872	1 - Purchaser has upgraded to a 30" Chimney hood fan... see spec's	
Line 62597	Note:	
21Jan21 / 21Jan21		

CABINETRY APPLIANCE - FRIDGE

Inv.4872	1 - To supply & install the 66CM DEEP FRIDGE ENCLOSURE - COUNTER DEPTH WITH NO WALLS - 2 66CM DEEP GABLES AND 1 66CM DEEP CABINET ' WITH FLIP UP DOOR - THIS IS NOT A ZERO CLEARANCE ENCLOSURE. STANDARD HEIGHTS AND WIDTHS WILL BE USED. - CLASSIC SERIES	
Line 62610	Note: in the kitchen... see sketch # 1	
21Jan21 / 21Jan21 SEE FRIDGE SPEC'S ATTACHED.		

CABINETRY BASE CABINETS

Inv.4872	1 - To supply & install BANK OF DRAWERS CABINET - 40 CM + - - SIZE SUBJECT TO FLOOR PLAN - CLASSIC SERIES in the kitchen... see sketch # 1	
Line 62611	Note:	
21Jan21 / 21Jan21		

Kingsmen (Thames) Inc. / Havelock Corners (Kingsmen)

Lot/Unit: 78 Phase/Building: 4B Model/Floor Plan: Arthur (4205) Elev B 4 Bed - 4+1 Bath

Inv.4872	1 - To supply & install the POTS & PANS DRAWER - SIZE SUBJECT TO FLOOR PLAN - CLASSIC SERIES in the kitchen... see sketch # 1	
Line 62612	Note:	
21Jan21 / 21Jan21		
Inv.4872	1 - To supply & install the BASE PIE CUT CORNER - CLASSIC SERIES in the kitchen.... see sketch # 1	
Line 62609	Note:	
21Jan21 / 21Jan21		

CABINETRY HARDWARE

Inv.4872	1 - To supply & install the KITCHEN - CABINET HARDWARE - UPGRADE 2 - DISPLAY BOARD.. see colour chart for details.	
Line 62630	Note:	
21Jan21 / 21Jan21		
Inv.4872	1 - To supply & install the VANITY - CABINET HARDWARE - UPGRADE 2 - DISPLAY BOARD for the powder room...see colour chart for details.	
Line 62631	Note:	
21Jan21 / 21Jan21		

CABINETRY HOOD FANS

Inv.4872	1 - To supply & install the HOOD FAN - PRO COLLECTION (SCB72230) WALL MOUNT RANGE HOOD WITH 650 CFM FAN - 30 INCH in the kitchen... see spec's	
Line 62596	Note:	
21Jan21 / 21Jan21		

CABINETRY MICROWAVE OVEN STOVE COOKTOP

Inv.4872	1 - To supply & install the WALL CABINET WITH SHELF FOR MICROWAVE - FINISHED INTERIOR - OPENING 24INCHESW X 13 3 - 4INCHESH X 17INCHESD - CLASSIC SERIES in the kitchen.. see sketch # 1	
Line 62613	Note: Elec. outlet for this upgrade is sold sep.	
21Jan21 / 21Jan21		

CABINETRY VANITY

Inv.4872	1 - To supply & install a VANITY BANK OF DRAWERS - - CLASSIC SERIES in the master ensuite... see sketch # 2	
Line 62615	Note:	
21Jan21 / 21Jan21		
Inv.4872	2 - To supply & install a VANITY LOWER DRAWER - CLASSIC SERIES in Ens. #2's bathroom... see sketch # 2	
Line 62616	Note:	
21Jan21 / 21Jan21		
Inv.4872	2 - To supply & install a VANITY LOWER DRAWER - CLASSIC SERIES in Ens. #3 's bathroom... see sketch # 2	
Line 62617	Note:	
21Jan21 / 21Jan21		

Kingsmen (Thames) Inc. / Havelock Corners (Kingsmen)

Lot/Unit: 78 Phase/Building: 4B Model/Floor Plan: Arthur (4205) Elev B 4 Bed - 4+1 Bath

Inv.4872	1 - To supply & install a VANITY LOWER DRAWER - CLASSIC SERIES in Ens. #4 's bathroom... see sketch # 2	
Line 62618	Note:	
21Jan21 / 21Jan21		

CABINETRY WALL AND HUTCH

Inv.4872	1 - To supply & install the UPPER ANGLE CORNER PER UNIT - CLASSIC SERIES in the kitchen... see sketch # 1	
Line 62606	Note:	
21Jan21 / 21Jan21		

Inv.4872	1 - To supply & install a FINISHED - MATCHING INTERIOR PER CABINET - CLASSIC SERIES to the upper angled corner cabinet... see sketch # 1	
Line 62607	Note:	
21Jan21 / 21Jan21		

Inv.4872	1 - To supply & install a GLASS DOOR - CLEAR - GLASS - UNFINISHED CABINET INTERIOR - PRICED PER EACH - CLASSIC SERIES to the upper angled corner cabinet... see sketch # 1	
Line 62608	Note:	
21Jan21 / 21Jan21		

COUNTER TOP

Inv.4872	4 - To supply & install a quartz shower niche to the: Master ensuite: IMPERIAL WHITE Ens. #2: IMPERIAL WHITE Ens. #3: IMPERIAL WHITE Ens. #4: IMPERIAL WHITE	
Line 62598	Note: See sketch # 2 for location of instalation	
21Jan21 / 21Jan21		

COUNTER TOP - KITCHEN

Inv.4872	1 - To supply & install the COUNTER TOP - KITCHEN - KITCHEN - 3CM COUNTER TOP - UPGRADE LEVEL 2 in lieu of the standard level 1 quartz counter top... see colour chart for details.	
Line 62624	Note:	
21Jan21 / 21Jan21		

COUNTER TOP - VANITY

Inv.4872	1 - To supply & install the COUNTER TOP - VANITY - POWDER ROOM - 2CM COUNTER TOP - UPGRADE LEVEL 2 in lieu of the standard laminate counter top... see colour chart for details.	
Line 62625	Note:	
21Jan21 / 21Jan21		
Inv.4872	1 - To supply & install the COUNTER TOP - VANITY - MASTER ENSUITE BATHROOM - 2CM COUNTER TOP - UPGRADE LEVEL 2 in lieu of the standard laminate counter top... see colour chart for details.	
Line 62626	Note:	
21Jan21 / 21Jan21		

Kingsmen (Thames) Inc. / Havelock Corners (Kingsmen)

Lot/Unit: 78 Phase/Building: 4B Model/Floor Plan: Arthur (4205) Elev B 4 Bed - 4+1 Bath

Inv.4872	1 - To supply & install the COUNTER TOP - VANITY--ENSUITE #2'S BATHROOM - 2CM COUNTER TOP - UPGRADE LEVEL 2 in lieu of the standard laminate counter top... see colour chart for details.	
Line 62627	Note:	
21Jan21 / 21Jan21		
Inv.4872	1 - To supply & install the COUNTER TOP - VANITY--ENSUITE #3 ' S BATHROOM - 2CM COUNTER TOP - UPGRADE LEVEL 2 in lieu of the standard laminate counter top... see colour chart for details.	
Line 62628	Note:	
21Jan21 / 21Jan21		
Inv.4872	1 - To supply & install the COUNTER TOP - VANITY--ENSUITE #4 ' S BATHROOM - 2CM COUNTER TOP - UPGRADE LEVEL 2 in lieu of the standard laminate counter top... see colour chart for details.	
Line 62629	Note:	
21Jan21 / 21Jan21		

DOORS AND WINDOWS

Inv.4872	1 - To supply & install plain glass french doors to the study area on the main floor... see sketch # 1	
Line 62576	Note:	
21Jan21 / 21Jan21		

ELECTRICAL

Inv.4872	1 - To SUPPLY AND INSTALL MICROWAVE PLUG (DEDICATED CIRCUIT AND INCLUDES ARC FAULT BREAKER) at the microwave shelf in the kitchen...see sketch # 1	
Line 62614	Note:	
21Jan21 / 21Jan21		
Inv.4872	1 - To supply & install SIX LED pot lights in the great room on a sep. switch... see sketch # 1	
Line 62586	Note: CAP THE STANDARD CEILING LIGHT IN THIS ROOM.	
21Jan21 / 21Jan21		
Inv.4872	1 - To supply & install the standard T.V. rough in in the great room and master bedroom... AND To supply & install the standard Phone (CAT 5) rough in in the great room, master bedroom and computer niche area on the second floor...see sketch # 1 & # 2	
Line 62587	Note:	
21Jan21 / 21Jan21		
Inv.4872	1 - To SUPPLY AND INSTALL AN ADDITIONAL BASIC RECEPTACLE (NOT DEDICATED) at approx. 66" + - up from the floor centered to the F/P in the great room..	
Line 62588	Note: See sketch # 1	
21Jan21 / 21Jan21		
Inv.4872	1 - To SUPPLY AND INSTALL CONDUIT FOR TV OVER THE FIREPLACE – TERMINATED IN SAME ROOM at approx. 66" + - up from the floor next to + - the upg. elec. outlet and terminated next to + - the std. T.V. rough in in the great room.....see sketch # 1	
Line 62589	Note:	
21Jan21 / 21Jan21		

Kingsmen (Thames) Inc. / Havelock Corners (Kingsmen)

Lot/Unit: 78 Phase/Building: 4B Model/Floor Plan: Arthur (4205) Elev B 4 Bed - 4+1 Bath

Inv.4872	1 - To supply & install an additional exterior light at the Portico, have this light connected to the other standard light at Portico, both on the same switch.. see sketch # 1	
Line 62590	Note:	
21Jan21 / 21Jan21		
Inv.4872	1 - To supply & install an additional exterior light at the Patio door area have this light connected to the other standard light at the Patio door , both on the same switch.. see sketch # 1	
Line 62591	Note:	
21Jan21 / 21Jan21		
Inv.4872	1 - To SUPPLY AND INSTALL EXTRA CEILING BOX ROUGH IN CAPPED (DOES NOT INCLUDE SWITCH) over the breakfast bar area... see sketch # 1	
Line 62592	Note: Have this capped elec. connected to a sep. switch, switch is sold sep.	
21Jan21 / 21Jan21		
Inv.4872	1 - To supply & install AN ADDITIONAL SINGLE POLE SWITCH connected to the upgraded capped elec. over the breakfast bar in the kitchen.	
Line 62593	Note:	
21Jan21 / 21Jan21		
Inv.4872	1 - To SUPPLY AND INSTALL REINFORCING FOR A CEILING to the standard dining room light... see sketch # 1	
Line 62594	Note:	
21Jan21 / 21Jan21		
Inv.4872	1 - To SUPPLY AND INSTALL REINFORCING FOR A CEILING to the standard light at the O.T.B. area on the second floor... see sketch # 2	
Line 62595	Note:	
21Jan21 / 21Jan21		

HARDWOOD

Inv.4872	1 - To supply & install the 3 1/2" Elements Oak Engineered hardwood to the second floor in lieu of the standard carpet... see colour chart for details.	
Line 62644	Note:	
21Jan21 / 21Jan21		

HEATING AND AIR CONDITIONING

Inv.4872	1 - As per Schedule "PE": Vendor to instal capped gas line (rough in only) at rear of home for future BBQ locaion. Location to be finalized at vendors sold discretion.	
Line 62572	Note:	
21Jan21 / 21Jan21		
Inv.4872	1 - As per Schedule "PE" : Vendor to install gas line (rough in only) to kitchen in at stove location (as per plan) to include 110V code requirement.	
Line 62573	Note:	
21Jan21 / 21Jan21		
Inv.4872	1 - As per Schedule "PE" : Vendor to supply & install air conditioning unit, sized accordingly, from vendors standard samples.	
Line 62574	Note:	
21Jan21 / 21Jan21		
Inv.4872	1 - To supply & install a HUMMIDIFIER to the furnace...	
Line 62575	Note:	
21Jan21 / 21Jan21		

Kingsmen (Thames) Inc. / Havelock Corners (Kingsmen)

Lot/Unit: 78 Phase/Building: 4B Model/Floor Plan: Arthur (4205) Elev B 4 Bed - 4+1 Bath

PAINT AND DRYWALL

Inv.4872	1 - To supply & install the standard Coffered ceiling in the dining room area as per plan... see sketch # 1	
Line 62577	Note:	
21Jan21 / 21Jan21		

Inv.4872	1 - To supply & install a WAFFLE ceiling in the great room... see sketch # 1	
Line 62578	Note: NO CORNICE MOULDING HAS BEEN SUPPLIED OR INSTALLED.	
21Jan21 / 21Jan21		

PLUMBING

Inv.4872	1 - To supply & install the upgraded MIROLIN "BROOKE" Free standing tub in the master ensuite in lieu of the standard free standing tub... see spec's	
Line 62580	Note:	
21Jan21 / 21Jan21		

Inv.4872	1 - To supply & install a PLUMBING EXTRAS - SHOWER STALL (IN LIEU OF STANDARD 5 FOOT TUB) with a frameless panel and door, and a shower pot light for Ens. #2... see sketch # 2	
Line 62581	Note:	
21Jan21 / 21Jan21		

Inv.4872	1 - To supply & install a PLUMBING EXTRAS - SHOWER STALL (IN LIEU OF STANDARD 5 FOOT TUB) with a frameless panel and door, and a shower pot light for Ens. #4... see sketch # 2	
Line 62582	Note:	
21Jan21 / 21Jan21		

Inv.4872	2 - Raise the standard toe tester in both Ens. #2 and Ens. # 4 to approx. 30" + - up from unfinished floors.	
Line 62583	Note:	
21Jan21 / 21Jan21		

Inv.4872	1 - To supply & install the WATERLINE ROUGH-IN TO THE FRIDGE LOCATION (NO HOOK UP) in the kitchen...	
Line 62584	Note:	
21Jan21 / 21Jan21		

Inv.4872	1 - To supply & install the WATERLINE ROUGH-IN TO THE DRYER LOCATION (NO HOOK UP) in the laundry room	
Line 62585	Note:	
21Jan21 / 21Jan21		

Inv.4872	1 - To supply & install the BLANCO QUATRUS under mount kitchen sink model; 401247 in lieu of the standard under mount kitchen sink... see spec's	
Line 62649	Note:	
21Jan21 / 21Jan21		

Inv.4872	1 - To supply & install the MOEN soap dispencer model: 3942 in chrome in the kitchen.. see spec's See sketch # 1	
Line 62650	Note:	
21Jan21 / 21Jan21		

Kingsmen (Thames) Inc. / Havelock Corners (Kingsmen)

Lot/Unit: 78 Phase/Building: 4B Model/Floor Plan: Arthur (4205) Elev B 4 Bed - 4+1 Bath

Inv.4872	6 - To supply & install the CONTRAC CATENA under mount vanity sinks to the powder room, master ensuite, ens. #2, #3 & #4's bathroom.. see spec's	
Line 62651	Note: STILL TO INSTALL THE STANDARD VANITY FAUCETS.	
21Jan21 / 21Jan21		

RAILING

Inv.4872	1 - To supply & install the RAILING - UPGRADE 1 - METAL HANDRAIL 3 INCH OVAL IN OAK - PICKETS STEEL ½ INCH SQUARE, PLAIN, WITH SHOES IN FLAT BLACK - POSTS 3½ INCH SQUARE, WITH CAP OAK IN OAK throughout in lieu of the standard pickets and rails	
Line 62648	Note:	
21Jan21 / 21Jan21		

TILE - FLOOR

Inv.4872	1 - To supply & install the UPGRADE 4 - FLOOR TILE - "STACKED" - FOYER TILE area in lieu of the standard floor tiles... see colour chart for details.	
Line 62632	Note:	
21Jan21 / 21Jan21		
Inv.4872	1 - To supply & install the UPGRADE 4 - FLOOR TILE - "STACKED" - POWDER ROOM TILE area in lieu of the standard floor tiles... see colour chart for details.	
Line 62633	Note:	
21Jan21 / 21Jan21		
Inv.4872	1 - To supply & install the UPGRADE 4 - FLOOR TILE - "STACKED" - MUD ROOM TILE area in lieu of the standard floor tiles... see colour chart for details.	
Line 62634	Note:	
21Jan21 / 21Jan21		
Inv.4872	1 - To supply & install the UPGRADE 4 - FLOOR TILE - "STACKED" - KITCHEN / BREKFAST TILE area in lieu of the standard floor tiles... see colour chart for details.	
Line 62635	Note:	
21Jan21 / 21Jan21		
Inv.4872	1 - To supply & install the UPGRADE 3 - FLOOR TILE - STACKED - LAUNDRY TILE in lieu of the standard tiles... see colour chart for details... see sketch # 2 for installation direction of tile.	
Line 62636	Note:	
21Jan21 / 21Jan21		
Inv.4872	1 - To supply & install the UPGRADE 3 - FLOOR TILE - STACKED - MASTER ENSUITE TILE in lieu of the standard tiles... see colour chart for details... see sketch # 2 for installation direction of tile.	
Line 62637	Note:	
21Jan21 / 21Jan21		
Inv.4872	1 - To supply & install the UPGRADE 3 - FLOOR TILE - STACKED - ENSUITE #2'S TILE in lieu of the standard tiles... see colour chart for details... see sketch # 2 for installation direction of tile.	
Line 62638	Note:	
21Jan21 / 21Jan21		

Kingsmen (Thames) Inc. / Havelock Corners (Kingsmen)

Lot/Unit: 78 Phase/Building: 4B Model/Floor Plan: Arthur (4205) Elev B 4 Bed - 4+1 Bath

Inv.4872	1 - To supply & install the UPGRADE 3 - FLOOR TILE - STACKED - ENSUITE #3 'S TILE in lieu of the standard tiles... see colour chart for details... see sketch # 2 for installation direction of tile.	
Line 62639	Note:	
21Jan21 / 21Jan21		
Inv.4872	1 - To supply & install the UPGRADE 3 - FLOOR TILE - STACKED - ENSUITE #4 ' S TILE in lieu of the standard tiles... see colour chart for details... see sketch # 2 for installation direction of tile.	
Line 62640	Note:	
21Jan21 / 21Jan21		

TILE - WALL

Inv.4872	4 - To install the standard 8 x 10" wall tiles in a VERTICAL 70/30 off set brick pattern to the master ensuite shower, ens. #2's showe, ens. #3's shower and ens. #4's shower where applicable..see sketch # 2	
Line 62641	Note:	
21Jan21 / 21Jan21		
Inv.4872	1 - To supply & install the UPGRADE 1 - BACKSPLASH TILE - - KITCHEN SPLASH TILE to the reg. layout of kitchen, to include around the upgraded 30" chimney hood fan upto the kitchen bulk head in a 70/30 off set brick pattern...see colour chart	
Line 62642	Note: for detail... see sketch # 1	
21Jan21 / 21Jan21		

TRIM

Inv.4872	1 - To supply & install the TRIM UPGRADE - PACKAGE 4 - ADD FOR 3 INCH BACKBAND F/J CASING AND 7 1/4 INCH BASEBOARD PRIMED MDF COLONIAL WITH PINE COLONIAL SHOE MOULD in lieu of the standard trim package throughout where applicable.	
Line 62645	Note:	
21Jan21 / 21Jan21		
Inv.4872	1 - To supply & install the INTERIOR DOORS - UPGRADE TO LIVINGSTON SOLID CORE throughout in lieu of the standard interior doors.	
Line 62646	Note:	
21Jan21 / 21Jan21		



CONSTRUCTION SUMMARY

Kingsmen (Thames) Inc. / Havelock Corners (Kingsmen)

Lot/Unit: 78 Phase/Building: 4B Model/Floor Plan: Arthur (4205) Elev B 4 Bed - 4+1 Bath

EXTRAS AS PER OFFER

5 FREE APPLIANCES ? STAINLESS STEEL FRONT - FRIDGE: STOVE AND DISHWASHER. WHITE WASHER AND DRYER (SUPPLIED ONLY, NOT INSTALLED, FROM BUILDERS STANDARD LINE) TO ARRANGE DELIVERY ? CALL THE BRICK COMMERCIAL SALES DIVISION AT 1-877-353-2850. <i>Worksheet</i> Note:	
VENDOR TO INSTALL CAPPED GAS LINE (ROUGH-IN ONLY) AT REAR OF HOME FOR FUTURE BBQ LOCATION. LOCATION TO BE FINALIZED AT VENDORS SOLE DISCRETION. <i>Worksheet</i> Note:	
VENDOR TO INSTALL GAS LINE (ROUGH-IN ONLY) TO KITCHEN IN AT STOVE LOCATION (AS PER PLAN) TO INCLUDE 110V CODE REQUIREMENT. <i>Worksheet</i> Note:	
VENDOR TO SUPPLY & INSTALL AIR CONDITIONING UNIT, SIZED ACCORDINGLY, FROM VENDORS STANDARD SAMPLES. <i>Worksheet</i> Note:	

Purchasers: DAVINDER SINGH DHILLON & PARDEEP KAUFProperty: 78 of Plan - Draft Approval SB17-03-08
Telephone Res. / Bus: (416) 708-9986 / Project: Kingsmen (Thames) Inc.
Decor Advisor: Barbara Coccia Model and Elevation: Arthur (4205) Elev B 4 Bed - 4+1 Bath

Layout Changes: ☒ Yes ☐ No Sketch Attached: ☒ Yes ☐ No Exterior Colour Scheme:

1. Cabinetry

	Style and Colour	Counter Top	Hardware
Kitchen / Breakfast	*#7 Ottawa Paint Macadamia	*UPG #2 H/S Aspen 3cm	*12829SB GOLD
Kitchen Island	*#7 Ottawa Paint Macadamia	*UPG #2 H/S Aspen 3cm	*12829SB GOLD
Laundry Room	/	/	/
Powder Room	*#7 Ottawa Paint Macadamia	*UPG #2 H/S Aspen 2cm	*12829SB GOLD
Main Bathroom	/	/	/
Master Ensuite Bathroom	*#7 Ottawa Paint Macadamia	*UPG #2 H/S Aspen 2cm	12843 Handle
Second Ensuite Bathroom (If Applicable)	*#7 Ottawa Paint Macadamia	*UPG #2 H/S Aspen 2cm	12843 Handle
Bedroom #3 Bathroom	*#7 Ottawa Paint Macadamia	*UPG #2 H/S Aspen 2cm	12843 Handle
Bedroom #4 Bathroom	*#7 Ottawa Paint Macadamia	*UPG #2 H/S Aspen 2cm	12843 Handle

Appliances Custom Size Fridge Valance Lighting Microwave / Range Hood
☒ Yes ☐ No ☐ Yes ☒ No ☐ Yes ☒ No
Cooktop / Rangetop Built in Wall Oven Slide-in Range
☐ Yes ☒ No ☐ Yes ☒ No ☐ Yes ☒ No

Comment

2. Flooring

	Selection
Foyer	**UPG #4 24x24" Mayfair Calcatta Oro HD Polished Rectified STACKED
Main Hall	**UPG #4 24x24" Mayfair Calcatta Oro HD Polished Rectified STACKED
Back Hall	/
Breakfast	**UPG #4 24x24" Mayfair Calcatta Oro HD Polished Rectified STACKED
Laundry Room	*UPG #3 12x24"Mayfair Calcatta Oro HD Polished Rectified STACKED
Kitchen	**UPG #4 24x24" Mayfair Calcatta Oro HD Polished Rectified STACKED
Powder Room	**UPG #4 24x24" Mayfair Calcatta Oro HD Polished Rectified STACKED
Main Bathroom	Bed#2 Bath-*UPG#3 12x24"Mayfair Calcatta Oro HD Polished Rectified STACKED
Master Ensuite	*UPG #3 12x24"Mayfair Calcatta Oro HD Polished Rectified STACKED SH/FL:2x2" Soho Warm Grey
Bathroom (If Applicable)	Bed#3 Bath-*UPG#3 12x24"Mayfair Calcatta Oro HD Polished Rectified STACKED
Mud Room	**UPG #4 24x24" Mayfair Calcatta Oro HD Polished Rectified STACKED
Bedroom #4 Bathroom	*UPG #3 12x24"Mayfair Calcatta Oro HD Polished Rectified STACKED SH/FL:2x2" Soho Warm Grey
Living Room	/
Dining Room	3 1/2" Elements Oak Sturgeon
Family / Great Room	3 1/2" Elements Oak Sturgeon
Den / Library / Study	3 1/2" Elements Oak Sturgeon
Basement Landing (If Applies)	/
Lower Landing (If Applicable)	/
Upper Landing	/
Upper Hall	*3 1/2" Elements Oak Sturgeon (Including Computer Niche)
Master Bedroom	*3 1/2" Elements Oak Sturgeon
Bedroom #2	*3 1/2" Elements Oak Sturgeon
Bedroom #3	*3 1/2" Elements Oak Sturgeon
Bedroom #4	*3 1/2" Elements Oak Sturgeon
Bedroom #5	/
Shower Jamb (Sill)	Master, Bedroom #2, #3 & #4: Anatolia Marmiline SNOW

Flooring Continued on Page 2

Initial:

PD

DS

Page 1 of 3

Purchasers: DAVINDER SINGH DHILLON & PARDEEP KAUFProperty: 78 of Plan - Draft Approval SB17-03-08
Telephone Res. / Bus: (416) 708-9986 / Project: Kingsmen (Thames) Inc.
Decor Advisor: Barbara Coccia Model and Elevation: Arthur (4205) Elev B 4 Bed - 4+1 Bath

2. Flooring - Continued -

Upgrade Underpad	Type	Area
Carpet on Stairs	Capped	Runner - *Upgrade
Comment		

NOTE: Bedroom #2 and bedroom #3 Shower Floor: 2x2" Soho Warm Grey Matte

3. Plumbing Fixtures / Faucets

Kitchen	Standard	Second Ensuite	Standard	Powder Room	Standard
Master Ensuite	Standard			Other Room	
Main Bathroom		Bedroom #3/#4 Bathroom	Standard		

Comment

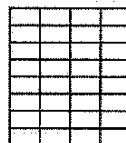
NOTE: The purchasers have ungraded to a undermount kitchen sink.. still to install the standard facuet. The purchasers have upgraded all bathroom sinks (powder room, master ensuite, bedroom #2, #3 and #4).. still to install the standard lav faucet.

4. Wall Tile

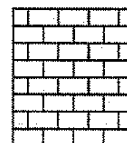
	Tile Selection	Listello	Insert	Insert Selection
Main Bathroom		<input type="checkbox"/>	<input type="checkbox"/>	
Master Ensuite				
Tub Deck		<input type="checkbox"/>	<input type="checkbox"/>	
Tub Apron		<input type="checkbox"/>	<input type="checkbox"/>	
Tub Surround		<input type="checkbox"/>		
Shower Stall	8X10" Bellina Grey	<input type="checkbox"/>	<input type="checkbox"/>	
Second Ensuite	8X10" Bellina Grey	<input type="checkbox"/>	<input type="checkbox"/>	
Bedroom #3 Bathroom	8X10" Bellina Grey	<input type="checkbox"/>	<input type="checkbox"/>	
Bedroom #4 Bathroom	8X10" Bellina Grey	<input type="checkbox"/>	<input type="checkbox"/>	
Kitchen Backsplash	*4x16" Biscuit Glossy 50-501 (70/30 Offset Brick Pattern)	<input type="checkbox"/>	<input type="checkbox"/>	
Complete Backsplash		<input type="checkbox"/>	<input type="checkbox"/>	

Comment

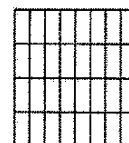
NOTE: To supply and install all wall tiles in the master, Bedroom #2, #3 and #4 in a vertical offset 70/30 brick pattern.
To supply and install the kitchen backsplash in a horizontal 70/30 offset brick pattern.



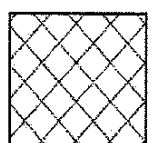
horizontal stacked



brick pattern



vertical stacked



diagonal/diamond

5. Fireplace

	Living Room			Family Room			Other Room - Specify Greatroom		
	Purchased	As Per Plan	N/A	Purchased	As Per Plan	N/A	Purchased	As Per Plan	N/A
Fireplace Type	<input type="radio"/>	<input type="radio"/>	<input type="radio"/>	<input type="radio"/>	<input type="radio"/>	<input type="radio"/>	<input type="radio"/>	<input checked="" type="radio"/>	<input type="radio"/>
Mantle Type							Front Facing- 2-sided		
Over Mantle							NF-08		
Colour / Stain							White		
Surround									
Hearth									

Comment



Initial: _____

Page 2 of 3

Purchasers: DAVINDER SINGH DHILLON & PARDEEP KAUF **Property:** 78 of Plan - Draft Approval SB17-03-08
Telephone Res. / Bus: (416) 708-9986 / **Project:** Kingsmen (Thames) Inc.
Decor Advisor: Barbara Coccia **Model and Elevation:** Arthur (4205) Elev B 4 Bed - 4+1 Bath

6. Trim Carpentry

Door Hardware Standard Handle

Interior Trim Upgraded

Comment

NOTE: The purchasers have upgraded all the interior doors and interior trim... see invoice for details.

Interior Doors

☐ 2 Panel Arch Top

☐ 2 Panel Square Top

☐ 6 Panel

Initial for Door Style

PD DB

7. Railings and Pickets

Railing Package **Upgrade #1 Metal Package

Railing Colour Elements Oak Sturgeon

Picket Colour Black Metal

Wood Stairs ☐ No ☒ Oak

Tread Colour Elements Oak Sturgeon

Comment

8. Plaster Mouldings and Medallions

Foyer

/

/

Kitchen/Breakfast

/

/

Main Hall

/

/

Den/Library

/

/

Living Room

/

/

Lower Landing

/

/

Dining Room

/

/

/

/

Family Room

/

/

/

/

Comment

9. Wall Paint

Kingsmen White

Smooth Ceilings

☐ First Floor

☐ First Floor incl. Second Floor Hall

☐ First and Second Floor


☒ Throughout

☐ Not Applicable

Trim Paint Kingsmen White

10. Additional Comments

11. Disclaimers and Notes

- Colours of all materials are as close as possible to builder's selection, but not necessarily identical due to variances in manufacturing.
- Any extras listed above are null and void unless accompanied by a separate invoice/amendment. Said invoice must be paid in full.
- The Purchaser acknowledges that after Interior Colour Selection form is signed and dated, no further changes will be permitted other than re-selection due to unavailability.  Purchaser's Initials
- The Purchaser acknowledges reading and accepting the "Kingsmen Group Décor Centre Disclaimers" form. This document contains other miscellaneous disclaimers.

This Interior Colour Selection is final and approved by:

Purchaser:

Signature: Pardeep Dhillon Date: Jan. 21, 2021

Signature: D. Singh Date: JAN 21 21

Vendor: Kingsmen (Thames) Inc.

SCHEDULE "B-1"

Floor Plan

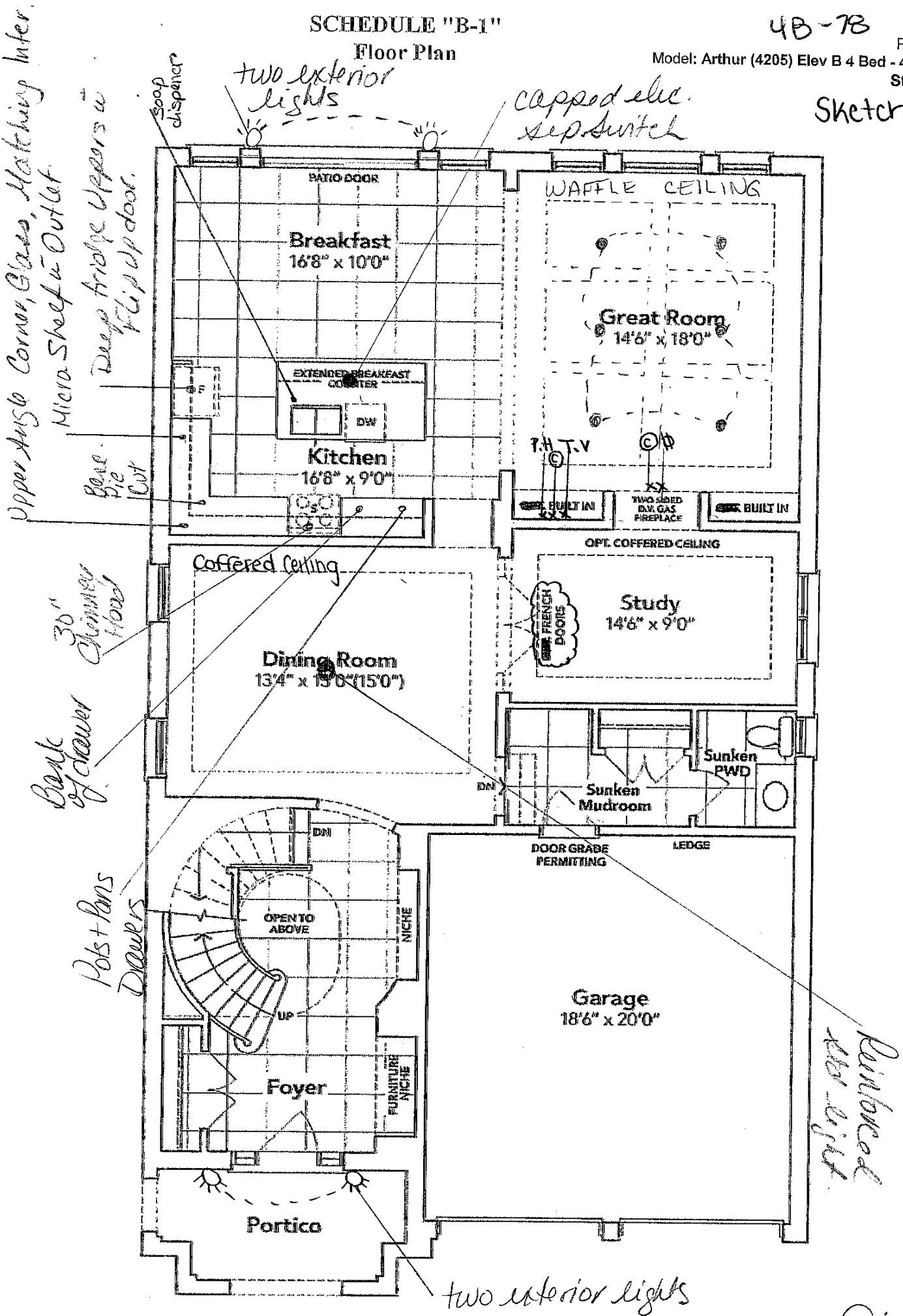
4B-7B

Lot 78

Phase 4B

Model: Arthur (4205) Elev B 4 Bed - 4+1 Bath
Standard

Sketch #1

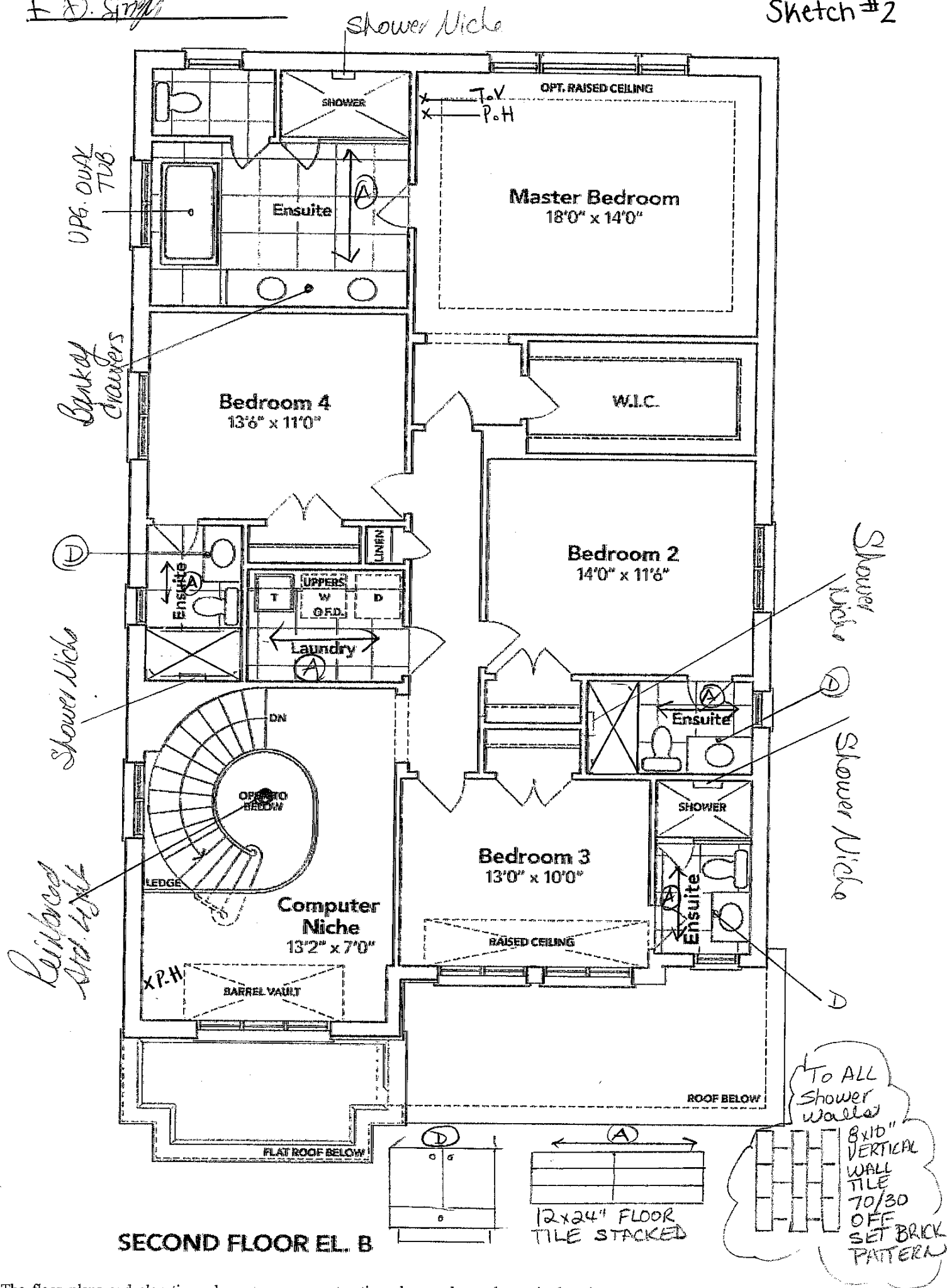


GROUND FLOOR EL. B

Parade Dehou

D. Smith

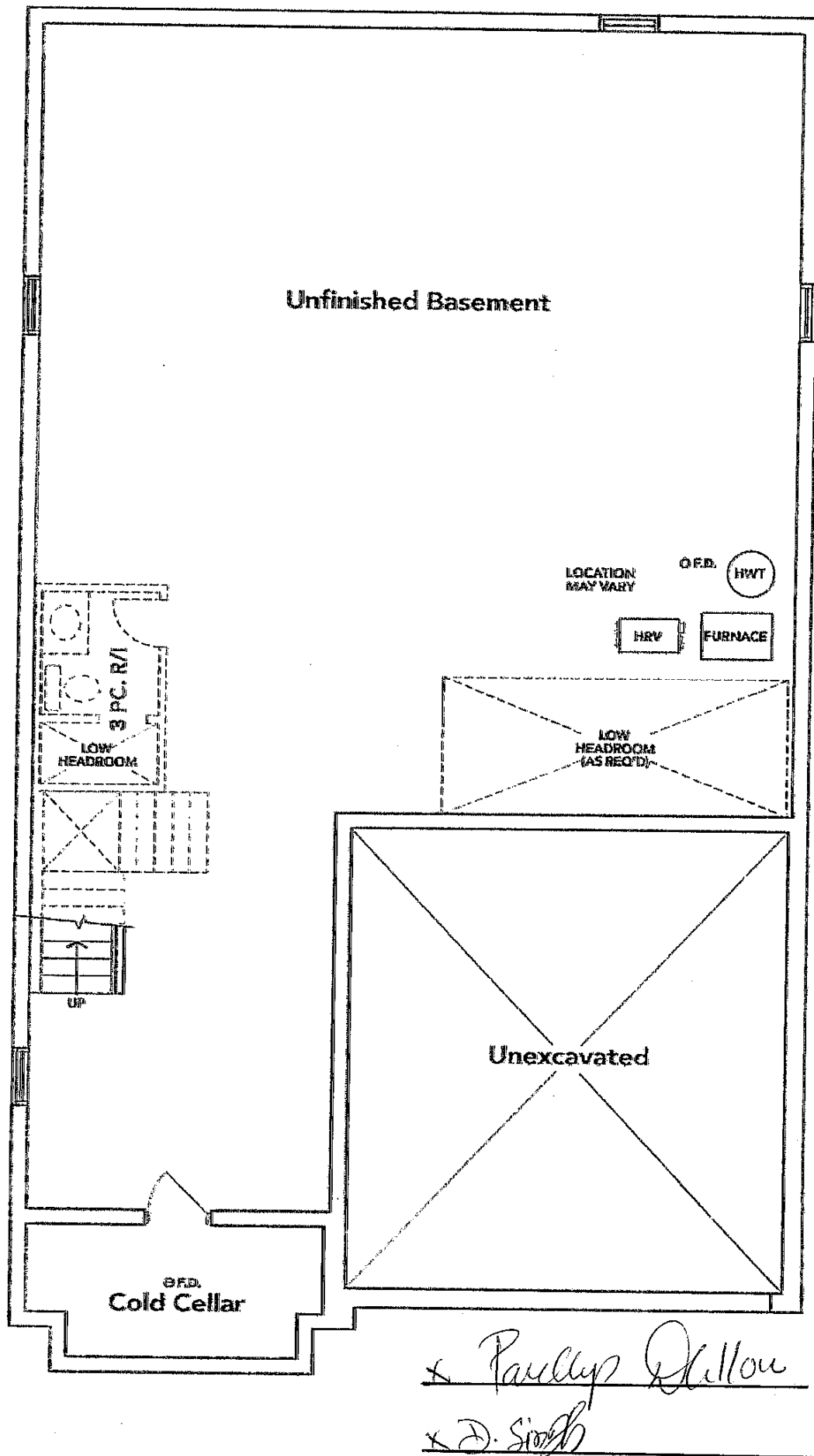
The floor plans and elevations shown are pre-construction plans and may be revised or improved as necessitated by architectural controls and the construction process. The measurements adhere to the rules and regulations of the TARIION Warranty Corporation's official method for the calculation of floor area. Materials, specifications and floor plans are subject to change without notice. All house renderings are artist's concept only. Actual usable floor space may vary from the stated floor area. All options shown are upgrades. E. & O. E.



The floor plans and elevations shown are pre-construction plans and may be revised or improved as necessitated by architectural controls and the construction process. The measurements adhere to the rules and regulations of the TARIION Warranty Corporation's official method for the calculation of floor area. Materials, specifications and floor plans are subject to change without notice. All house renderings are artist's concept only. Actual usable floor space may vary from the stated floor area. All options shown are upgrades. E. & O. E.

SCHEDULE "B-1"
Floor Plan

4B-78 Lot 78
Phase 4B
Model: Arthur (4205) Elev B 4 Bed - 4+1 Bath
Standard
Sketch #3



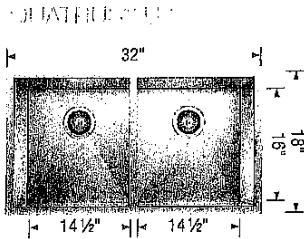
BASEMENT EL. B

Paulley Dillon
D. Smith

The floor plans and elevations shown are pre-construction plans and may be revised or improved as necessitated by architectural controls and the construction process. The measurements adhere to the rules and regulations of the TARION Warranty Corporation's official method for the calculation of floor area. Materials, specifications and floor plans are subject to change without notice. All house renderings are artist's concept only. Actual usable floor space may vary from the stated floor area. All options shown are upgrades. E. & O. E.

LOT 78 THAMES PH. 4 B
RE: KITCHEN UNDER MOUNT SINK
: SOAP DISPENSER
: UPG. VANITY SINKS.

QUATRUS®
Undermount



Undermount 401247
Minimum Cabinet Size*
36" (915 mm)
Bowl Depth
9" (229 mm)
Cubed Weight
55 lb. (25 kg)

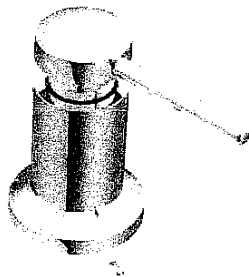
* Paulup Dullow
* D. Singh

Soap or Lotion Dispensers

Traditional Transitional Modern

However you define your faucet's style,
you can assure a coordinated look with Moen soap dispensers.

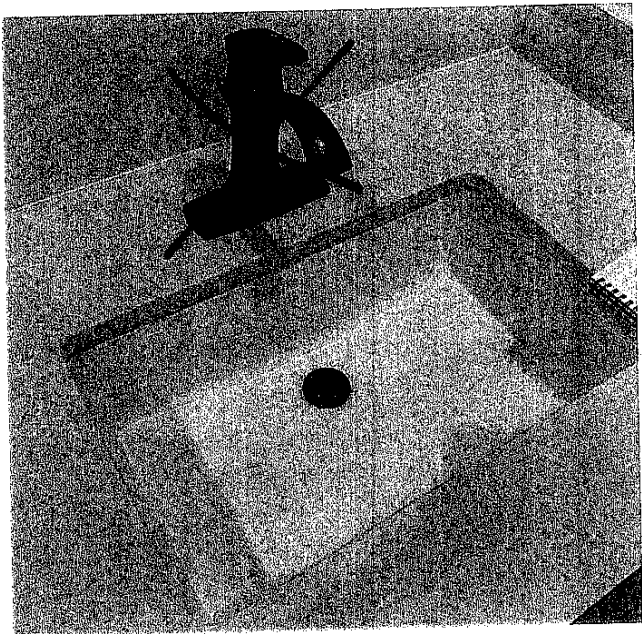
KITCHEN



Transitional Soap or
Lotion Dispenser

Model 3942

Chrome



DISPLAY ITEMS

Sink (Item 9)
Contrac Catena Undermount
Model 4210CIY

Lot #78 Thames 4B
Re: Master Ensuite
Upgraded Tub

4B-78

x Paulup Drillon
x D. Singh



Brooke™ | 1

Brooke™

Categories: Acrylic Freestanding

DESCRIPTION

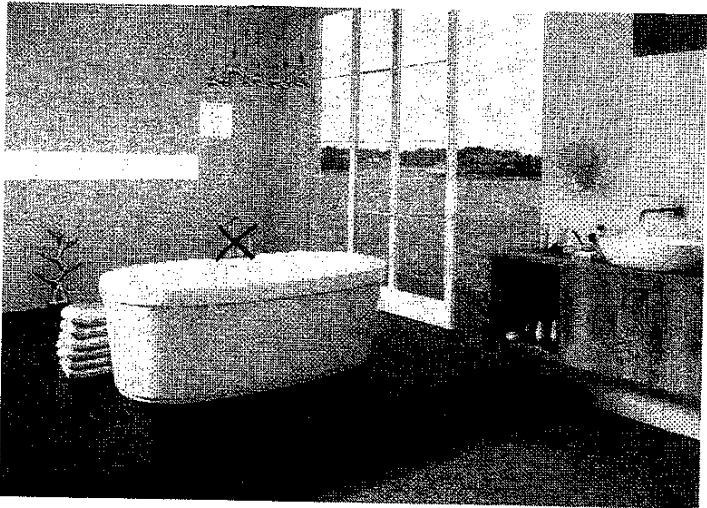
68" Freestanding Bath
SKU #: CF2002

FEATURES

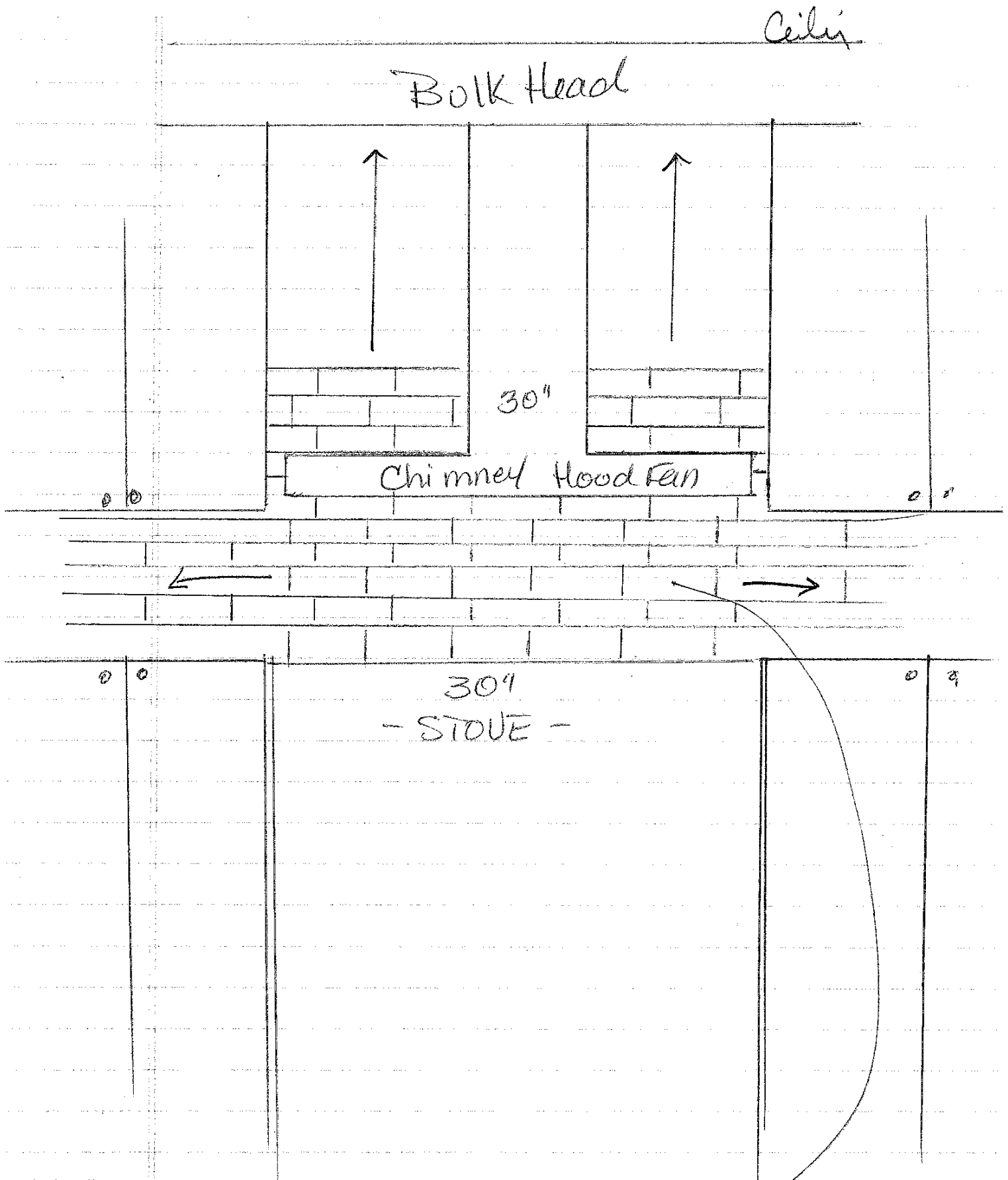
- Installation friendly two piece design
- Accepts deck mounted faucet
- Includes a chrome integral pop up drain and rectangular overflow
- ~~• Brushed nickel drain and overflow covers available~~
- Centre drain
- Includes levelling feet
- Available in White Only

DIMENSIONS

68" x 36" x 23"



Lot #78 Thames 4B
Re: Backsplash



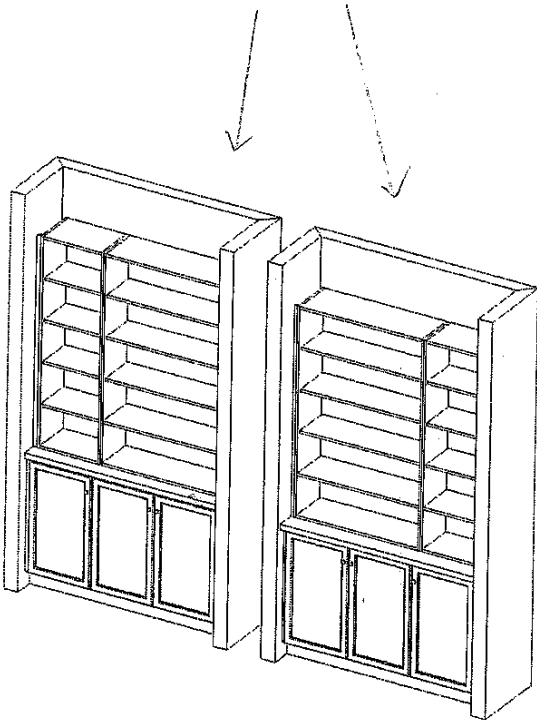
Paulup Dillon
D. Singh

70/30 OFF
SET BRICK PATTERN
KIT. BLS
NOT TO SCALE

Lot #78 Thames 4B
Re: Upgraded Built-in
Cabinets in Greatroom

4B-78

Opt. Built-In Cabinets



+ Paulup Phillon
+ D. Giff

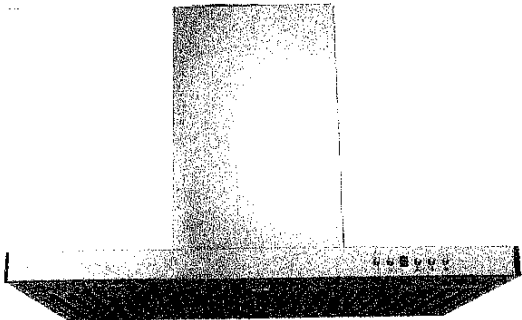
LOT 78 THAMES PH. 4 B
RE: UPG 30" CHIMNEY HOOD FAN

4B-78

Pandeep Dhillon
S.D. Singh

Specifications

Air Flow Volume: 650 CFM
Electrical Connection: 120V/60Hz
Power Consumption: 240 Watts
Current: 2.0 Amps
Fan Speed: 1599 RPM
Finishes: Stainless Steel
Duct: 6" Round
Knock-out: 6" Round - Top Only
Dimensions: Width: 30"/36"
Height: 44 1/2"
Depth: 19 3/4"
Noise Level: Min. 2 Sones
Max. 7 Sones



SCB722 - Baffle Filter



Ordering Model Chart

Model	Colour	Knock-out	Duct	Size	Filter	CFM
SCB72230	Stainless Steel	6"	6" Round	30"	Baffle	650
SCB72236	Stainless Steel	6"	6" Round	36"	Baffle	650

Notes



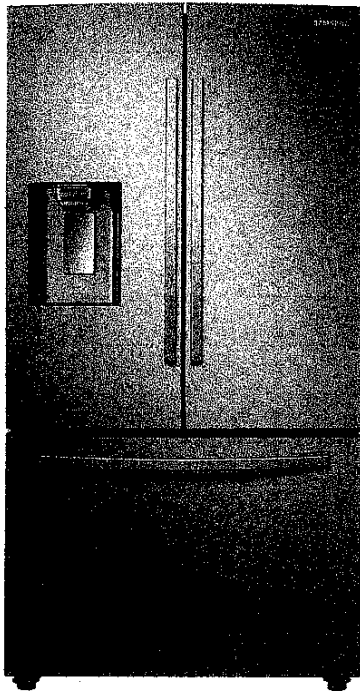
Pardip Dhillon

K.D. Singh

RF28R6201SR

SAMSUNG

28 cu. ft. 3-Door French Door Refrigerator
with CoolSelect Pantry™



Signature Features

Twin Cooling Plus®

- Independent fridge and freezer controls keep food fresher longer.

CoolSelect Pantry™

- Full-width drawer with three temperature control settings to chill or defrost food to ideal temperatures.

Ice Max

- Large capacity, stores up to 4.2 lbs of ice.

Fingerprint Resistant Finish

- A special finish to reduce smudges and minimize cleaning.

Wi-Fi and Bixby Enabled

- Use your smartphone to control the temperature and monitor your refrigerator remotely.

Available Colors



Fingerprint Resistant
Stainless Steel (shown)



Fingerprint Resistant
Black Stainless Steel



Fingerprint Resistant
Tuscan Stainless Steel



White



CoolSelect Pantry™ with
Temperature Control



Ice Max

Convenience

- CoolSelect Pantry™ with Temperature Control and Pantry Divider
- Wi-Fi and Bixby Enabled
- Adjustable Shelves for Tall Oversized Items
- Auto Pull-Out Upper Freezer Drawer
- Water Filter Indicator

Design

- Fingerprint Resistant Finish
- Premium External Filtered Water and Ice Dispenser with Light
- High Efficiency LED Lighting
- Accessibility (ADA Compliant)
- EZ-Open Handle™ on Freezer Door
- Tempered Glass Spill-Proof Shelves
- Gallon Door Bins

Performance

- Twin Cooling Plus®
- Ice Max - Stores up to 4.2 lbs of Ice
- ENERGY STAR® Compliant
- Two Humidity-Controlled Crispers
- Power Freeze and Power Cool Options
- CoolTight Door
- Door Alarm

Rating



ENERGY STAR® rated:
725 kWh/yr

LOT 78 THAMES PH. 4 B
RE: FRIDGE SPEC'S

* *Pauley Dillon*

* *D. Smith*

RF28R6201SR

SAMSUNG

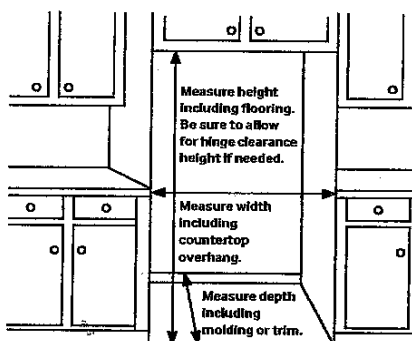
28 cu. ft. 3-Door French Door Refrigerator with CoolSelect Pantry™

Installation Specifications

1. Measure the height, width and depth of the opening, making sure to include baseboards, molding tile, countertop overhang, etc. Check to be sure there is enough room to open the door (consider walls, islands or other obstacles when measuring).
2. Refer to illustration below to determine dimensions.
3. Allow 2.5" of clearance on hinge side of refrigerator when installing next to a wall where handle may make contact.
4. Allow 1" minimum clearance at rear for proper air circulation and water/electrical connections. Allow a 3/8" minimum clearance at sides and top for ease of installation.
5. Ensure each door and entryway in the home is wide enough for the refrigerator to be moved through easily.

For optimal usage and to be able to open refrigerator doors completely, do not install next to a wall.

Please note: The following dimension and cutout information is for planning purposes only. For complete installation details, consult manual packed with product, or download manual online at samsung.com.



Total Capacity: 28 cu. ft.

Refrigerator: 19.1 cu. ft.

- Premium External Filtered Water and Ice Dispenser
 - Crushed or Cubed Ice
- Ice Max
- CoolSelect Pantry™ with Temperature Control - Deli (41°C), Fresh (38°F) and Chilled (32°F) Options
- Pantry Divider
- 2 Humidity-Controlled Crispers
- 5 Tempered Glass Spill-Proof Shelves:
 - 1 Slide-In
 - 1 Foldable Half
 - 3 Fixed
- 6 Clear Door Bins
 - Right Door: 3 Gallon Bins
 - Left Door: 3 Regular Bins
- Adjustable Shelves for Tall Oversized Items
- High Efficiency Top LED Lighting

Freezer: 8.9 cu. ft.

- EZ-Open Handle™
- 2 Drawer Dividers
- High Efficiency LED Lighting

Accessories

Water Filter: HAF-QIN

Warranty

One (1) Year Parts and Labor on Refrigerator
Five (5) Years Parts and Labor on Sealed Refrigeration System Only*
Ten (10) Years Parts and Five (5) Years Labor on Digital Inverter Compressor

*Compressor, evaporator, condenser, drier and connecting tubing.

Product Dimensions & Weight

Dimensions (WxHxD with hinges, handles and doors): 35 3/4" x 70" x 36"

Dimensions (WxHxD without hinges and door): 35 3/4" x 68 7/8" x 28 7/8"

Dimensions (WxHxD with hinge and door, no handle): 35 3/4" x 70" x 33 1/2"

Weight: 311 lbs

Shipping Dimensions & Weight (WxHxD)

Dimensions: 38 5/8" x 76 5/8" x 36 1/8"

Weight: 320 lbs

Color

Fingerprint Resistant Stainless Steel

Fingerprint Resistant Black Stainless Steel

Fingerprint Resistant Tuscan Stainless Steel

White

Model

RF28R6201SR

RF28R6201SG

RF28R6201DT

RF28R6202WW

UPC Code

887276341330

887276341323

887276341316

887276341347

Dimensions

