

Kingsmen (Thames) Inc. / Havelock Corners (Kingsmen)

Lot/Unit: 37    Phase/Building: 4B    Model/Floor Plan: Sheffield(5004)Elev A 4 BED-4+1 BATH

CABINETRY

|                  |  |  |
|------------------|--|--|
| Inv.4800         | 1 - To supply & install the stacked upper cabinets in the kitchen and servery area... see sketch       |  |
| Line 61699       | Note: There will be no space between the stacked uppers and bulk head in the kitchen and servery area. |  |
| 4Nov20 / 25Nov20 | Upper cabinets maybe reduced to accomodate the stacked uppers.   |  |
| Inv.4800         | 1 - Purchaser has upgraded to a 36" stove opening in the kitchen, see spec's.                          |  |
| Line 61701       | Note:  |  |
| 4Nov20 / 25Nov20 |  |  |

CABINETRY APPLIANCE - FRIDGE

|                  |  |  |
|------------------|--|--|
| Inv.4800         | 1 - To supply & install the 66CM DEEP FRIDGE ENCLOSURE - COUNTER DEPTH WITH - 1 WALL - 1 66CM DEEP GABLE AND 1 66CM DEEP CABINET with FLIP UP Door THIS IS NOT A ZERO CLEARANCE ENCLOSURE. STANDARD HEIGHTS AND WIDTHS WILL BE USED. |  |
| Line 61702       | Note: - CLASSIC SERIES in the kitchen....see sketch #1   |  |
| 4Nov20 / 25Nov20 |  |  |

CABINETRY BASE CABINETS

|                  |   |  |
|------------------|---|--|
| Inv.4800         | 1 - To supply & installthe POTS & PANS DRAWER - MINIMUM 60 CM - MAXIMUM 90 CM - SIZE SUBJECT TO FLOOR PLAN - CLASSIC SERIES in the kitchen...see sketch # 1   |  |
| Line 61703       | Note:   |  |
| 4Nov20 / 25Nov20 |   |  |
| Inv.4800         | 1 - To supply & install the PULL-OUT SPICE RACK CABINET - FULL-HEIGHT CABINET RECEIVES 3 TRAYS - TOP DRAWER CABINET RECEIVES 2 TRAYS - Approx. 40CM + - WIDE CABINETS - CLASSIC SERIES in the kitchen... see sketch # 1 |  |
| Line 61704       | Note:   |  |
| 4Nov20 / 25Nov20 |   |  |
| Inv.4800         | 1 - To supply & install the 45CM WIDE PULL-OUT DOOR BASE CABINET WASTE - RECYCLE CENTRE WITH SOFT-CLOSE - 2 35L BINS - AVAILABLE ONLY WITH 45CM WIDE CABINET - CLASSIC SERIES in the kitchen... see sketch # 1          |  |
| Line 61705       | Note:   |  |
| 4Nov20 / 25Nov20 |   |  |

CABINETRY HOOD FANS

|                  |  |  |
|------------------|--|--|
| Inv.4800         | 1 - To supply & install the NEW SIGNATURE HOOD CABINET FOR 36 INCHES STOVE WITH 600 CFM FANAAVAILABLE ONLY IN OAK - MAPLE - AND PAINT -REQUIRES ADDITIONAL LEAD TIME IN CONSTRUCTION SCHEDULE - CLASSIC SERIES in the kitchen ... see sketch # 1 |  |
| Line 61994       | Note:  |  |
| 4Nov20 / 25Nov20 |  |  |

CABINETRY MICROWAVE OVEN STOVE COOKTOP

|                  |  |  |
|------------------|--|--|
| Inv.4800         | 1 - To accomodate for the future BUILT-IN OVEN IN BASE CABINET UNDER COUNTERTOP FOR PANEL-MOUNT - PROUD - OR TRIM KIT INSTALLATIONS - TRIM KIT REQUIRED - SUPPLY ALL SPECS AND INSTALLATION GUIDES - CLASSIC SERIES under the 36" cook top..see spec's |  |
| Line 62010       | Note: see kitchen sketch 1A  |  |
| 4Nov20 / 25Nov20 |  |  |

**Kingsmen (Thames) Inc. / Havelock Corners (Kingsmen)**

**Lot/Unit: 37    Phase/Building: 4B    Model/Floor Plan: Sheffield(5004)Elev A 4 BED-4+1  
BATH**

|                   |  |  |
|-------------------|--|--|
| Inv.4827          | 1 - To supply & install a WALL CABINET WITH SHELF FOR MICROWAVE - FINISHED INTERIOR - OPENING 24INCHESW X 13 3 - 4INCHESH X 17INCHESD - CLASSIC SERIES..in the severy area... see sketch # 1 |  |
| Line 62028        | Note: Elec. is required for this upgrade, elec. is sold sep.   |  |
| 25Nov20 / 26Nov20 |  |  |

**CABINETRY VANITY**

|                  |   |  |
|------------------|---|--|
| Inv.4800         | 1 - To INCREASE VANITY TO KITCHEN HEIGHT 90CM HIGH - MAINTAINS VANITY DEPTH - CLASSIC SERIES for the powder room in lieu of the standard height ...             |  |
| Line 61706       | Note:   |  |
| 4Nov20 / 25Nov20 |   |  |
| Inv.4800         | 2 - To INCREASE VANITY TO KITCHEN HEIGHT 90CM HIGH - MAINTAINS VANITY DEPTH - CLASSIC SERIES for the master ensuite bathroom in lieu of the standard height ... |  |
| Line 61707       | Note: The make up counter remains at standard height.   |  |
| 4Nov20 / 25Nov20 |   |  |
| Inv.4800         | 1 - To INCREASE VANITY TO KITCHEN HEIGHT 90CM HIGH - MAINTAINS VANITY DEPTH - CLASSIC SERIES for Bedroom # 2's bathroom in lieu of the standard height ...      |  |
| Line 61708       | Note:   |  |
| 4Nov20 / 25Nov20 |   |  |
| Inv.4800         | 1 - To INCREASE VANITY TO KITCHEN HEIGHT 90CM HIGH - MAINTAINS VANITY DEPTH - CLASSIC SERIES for Bedroom # 3's bathroom in lieu of the standard height ..       |  |
| Line 61709       | Note:   |  |
| 4Nov20 / 25Nov20 |   |  |
| Inv.4800         | 1 - To INCREASE VANITY TO KITCHEN HEIGHT 90CM HIGH - MAINTAINS VANITY DEPTH - CLASSIC SERIES for Bedroom # 4's bathroom in lieu of the standard height ..       |  |
| Line 61710       | Note:   |  |
| 4Nov20 / 25Nov20 |   |  |
| Inv.4800         | 2 - To supply & install VANITY - LOWER DRAWER PRICE PER DRAWER - CLASSIC SERIES in the powder room... see sketch # 2  |  |
| Line 61711       | Note:   |  |
| 4Nov20 / 25Nov20 |   |  |
| Inv.4800         | 2 - To supply & install VANITY - LOWER DRAWER PRICE PER DRAWER - CLASSIC SERIES in the bedroom #2's bathroom... see sketch # 2                                  |  |
| Line 61712       | Note:   |  |
| 4Nov20 / 25Nov20 |   |  |
| Inv.4800         | 2 - To supply & install VANITY - LOWER DRAWER PRICE PER DRAWER - CLASSIC SERIES in the bedroom #3's bathroom... see sketch # 2                                  |  |
| Line 61713       | Note:   |  |
| 4Nov20 / 25Nov20 |   |  |
| Inv.4800         | 2 - To supply & install VANITY - LOWER DRAWER PRICE PER DRAWER - CLASSIC SERIES in the bedroom #4 's bathroom... see sketch # 2                                 |  |
| Line 61714       | Note:   |  |
| 4Nov20 / 25Nov20 |   |  |
| Inv.4800         | 2 - To supply & install two VANITY TOP DRAWERS- CLASSIC SERIES in the master ensuite bathroom... see skech # 2  |  |
| Line 61715       | Note:   |  |
| 4Nov20 / 25Nov20 |   |  |

**Kingsmen (Thames) Inc. / Havelock Corners (Kingsmen)**

**Lot/Unit: 37    Phase/Building: 4B    Model/Floor Plan: Sheffield(5004)Elev A 4 BED-4+1  
BATH**

**COUNTER TOP**

|                  |  |  |
|------------------|--|--|
| Inv.4800         | <b>3</b> - To supply & install a QUARTZ SHOWER NICHE in the master ensuite shower, bed #2's & #3's shower... see sketch # 2  |  |
| Line 61716       | Note: Master ensuite colour: Imperial White<br>Bedroom # 2's colour: Imperial White<br>Bedroom # 3's colour: Imperial White  |  |
| 4Nov20 / 25Nov20 |  |  |
| Inv.4800         | <b>1</b> - As per schedule "PE": Vendor to include level 1, 2cm granite or quartz in all bathrooms, as per plan, in lieu of the included laminate counter tops. Selections to be made from builders standard sampls. |  |
| Line 61682       | Note:  |  |
| 4Nov20 / 25Nov20 |  |  |
| Inv.4800         | <b>1</b> - To accomodate for a future 36" cook top... see spec's   |  |
| Line 62009       | Note:  |  |
| 4Nov20 / 25Nov20 |  |  |

**COUNTER TOP - KITCHEN**

|                  |  |  |
|------------------|--|--|
| Inv.4800         | <b>1</b> - To supply & install the COUNTER TOP - KITCHEN - KITCHEN - 3CM COUNTER TOP - UPGRADE LEVEL 2 in the kitchen and servery area in lieu of the standard level 1 quartz... see colour chart for details. |  |
| Line 61727       | Note:  |  |
| 4Nov20 / 25Nov20 |  |  |

**DOORS AND WINDOWS**

|                  |  |  |
|------------------|--|--|
| Inv.4800         | <b>1</b> - Delete the door into HIS W.I.C. install wall, remove wall between HIS and HERS W.I.C., connect the shelf and rod in the NEW W.I.C. in the master ensuite.. see sketch # 2 |  |
| Line 61686       | Note:  |  |
| 4Nov20 / 25Nov20 |  |  |

**ELECTRICAL**

|                   |  |  |
|-------------------|--|--|
| Inv.4827          | <b>1</b> - To SUPPLY AND INSTALL 110VOLT PLUG (INCLUDES ARC FAULT BREAKER) for the future microwave, install plug at microwave shelf in servery area... see sketch # 1 |  |
| Line 62030        | Note:  |  |
| 25Nov20 / 26Nov20 |  |  |
| Inv.4800          | <b>1</b> - To supply & install the standard T.V. rough in in the great room and master bedroom... see sketch # 1 & # 2   |  |
| Line 61689        | Note:  |  |
| 4Nov20 / 25Nov20  |  |  |
| Inv.4800          | <b>1</b> - To supply & install the standard Phone ( CAT 5 ) rough in in the great room, servery area off the kitchen and in the master bedroom... see sketch # 1 & # 2 |  |
| Line 61690        | Note:  |  |
| 4Nov20 / 25Nov20  |  |  |
| Inv.4800          | <b>3</b> - To SUPPLY AND INSTALL THREE CAT-5 ROUGH'S one in bedroom # 2, one in bedroom #3 and one in bedroom # 4... see sketch # 2                                    |  |
| Line 61691        | Note:  |  |
| 4Nov20 / 25Nov20  |  |  |
| Inv.4800          | <b>1</b> - To supply & install TWO additional exterior back lights on a sep. switch... see sketch # 1  |  |
| Line 61692        | Note:  |  |
| 4Nov20 / 25Nov20  |  |  |

Kingsmen (Thames) Inc. / Havelock Corners (Kingsmen)

Lot/Unit: 37    Phase/Building: 4B    Model/Floor Plan: Sheffield(5004)Elev A 4 BED-4+1  
BATH

|                  |  |  |
|------------------|--|--|
| Inv.4800         | 1 - Relocate the standard ceiling light in the great room... see sketch # 1  |  |
| Line 61693       | Note: This relocated standard light will be connected to a capped ceiling electrial, which is sold sep. see sep. extra for details.                  |  |
| 4Nov20 / 25Nov20 | Both will be connected to the standard switch .  |  |
| Inv.4800         | 1 - To SUPPLY AND INSTALL EXTRA CEILING BOX ROUGH IN CAPPED (DOES NOT INCLUDE SWITCH) in the great room... see sketch # 1                            |  |
| Line 61694       | Note: This capped ceiling box will be connected to the relocated standard ceiling light in the great room, both will be on the same standard switch. |  |
| 4Nov20 / 25Nov20 |  |  |
| Inv.4800         | 1 - To SUPPLY AND INSTALL REINFORCING FOR A CEILING to O.T.A at the foyer area... see sketch # 1   |  |
| Line 61695       | Note:  |  |
| 4Nov20 / 25Nov20 |  |  |
| Inv.4800         | 1 - To supply & install a HOLIDAY outlet in the soffit on a sep. switch... see sketch # 1  |  |
| Line 61698       | Note: Have switch installed along with the other switch(s) in the foyer area.  |  |
| 4Nov20 / 25Nov20 |  |  |

HEATING AND AIR CONDITIONING

|                  |   |  |
|------------------|---|--|
| Inv.4800         | 1 - To supply & install the HUMIDIFIER to the furnace...  |  |
| Line 61683       | Note:   |  |
| 4Nov20 / 25Nov20 |   |  |
| Inv.4800         | 1 - As per schedule "PE": Vendor to install capped gas line ( rough in only ) at rear of home for future BBQ location. Location to be finalized at vendors sole discretion. |  |
| Line 61679       | Note:   |  |
| 4Nov20 / 25Nov20 |   |  |
| Inv.4800         | 1 - As per schedule "PE": Vendor to install gas line ( rough in only ) to k itchen in at stove location ( as per plan) to include 110V code requirement.                    |  |
| Line 61680       | Note:   |  |
| 4Nov20 / 25Nov20 |   |  |
| Inv.4800         | 1 - As per schedule "PE": Vendor to supply & install air conditioning unit, sized accordingly, from vendors standard samples.   |  |
| Line 61681       | Note:   |  |
| 4Nov20 / 25Nov20 |   |  |

MISCELLANEOUS

PLUMBING

|                  |   |  |
|------------------|---|--|
| Inv.4800         | 1 - To supply & install the WATERLINE ROUGH-IN TO THE FRIDGE LOCATION (NO HOOK UP) in the kitchen   |  |
| Line 61687       | Note:   |  |
| 4Nov20 / 25Nov20 |   |  |
| Inv.4800         | 1 - To supply & install the BLANCO QUATRUS Under mount kitchen sink model # 401247 in the kitchen in lieu of the standard under mount kitchen sink... see spec's. |  |
| Line 61734       | Note: Still to install the standard single hole kitchen faucet.   |  |
| 4Nov20 / 25Nov20 |   |  |
| Inv.4800         | 1 - To supply & install a MOEN soap dispenser model # 3944 in Chrome in the kitchen... see spec's... see sketch # 1 for location of soap dispenser.               |  |
| Line 61736       | Note:   |  |
| 4Nov20 / 25Nov20 |   |  |

Kingsmen (Thames) Inc. / Havelock Corners (Kingsmen)

Lot/Unit: 37    Phase/Building: 4B    Model/Floor Plan: Sheffield(5004)Elev A 4 BED-4+1  
BATH

|                  |  |  |
|------------------|--|--|
| Inv.4800         | 6 - To supply & install the CONTRAC " CATENA" under mount vainty sinks to the powder room, master ensuite, bed #2's #3's & #4's bathrooms in lieu of the standard top mount vanity sinks... see spec's |  |
| Line 61737       | Note: Still to install the standard lav. faucets.  |  |
| 4Nov20 / 25Nov20 |  |  |
| Inv.4800         | 1 - To supply & install the MIROLIN "BROOKE" free standing tub in the master ensuite in lieu of the standard free standing tub... see spec's   |  |
| Line 61685       | Note:  |  |
| 4Nov20 / 25Nov20 |  |  |

RAILING

|                  |  |  |
|------------------|--|--|
| Inv.4800         | 1 - To supply & install the RAILING - UPGRADE 3 - METAL HANDRAIL WINDSOR IN OAK - PICKETS STEEL ½ INCH SQUARE, PLAIN/PTMA, WITH SHOES IN FLAT BLACK - POSTS 3½ INCH SQUARE IRP-12 NO CAP IN OAK in lieu of the standard pickets and rails. |  |
| Line 61995       | Note:  |  |
| 4Nov20 / 25Nov20 |  |  |

TILE - FLOOR

|                  |  |  |
|------------------|--|--|
| Inv.4800         | 1 - To install the upgraded 12 x 24" tile in the foyer, powder room, kitchen,breakfast, servery areas and laundry room in a 70/30 + - off set brick pattern. See sketch # 1                                      |  |
| Line 61996       | Note:  |  |
| 4Nov20 / 25Nov20 |  |  |
| Inv.4800         | 1 - To supply & install the UPGRADE 3 - FLOOR TILE - - FOYER TILE area in lieu of the standard floor tiles... see colour chart for details....see sketch # 1 for direction of installation of tile.              |  |
| Line 61718       | Note:  |  |
| 4Nov20 / 25Nov20 |  |  |
| Inv.4800         | 1 - To supply & install the UPGRADE 3 - FLOOR TILE - POWDER ROOM TILE area in lieu of the standard floor tiles... see colour chart for details....see sketch # 1 for direction of installation of tile.          |  |
| Line 61719       | Note:  |  |
| 4Nov20 / 25Nov20 |  |  |
| Inv.4800         | 1 - To supply & install the UPGRADE 3 - FLOOR TILE - LAUNDRY ROOM TILE area in lieu of the standard floor tiles... see colour chart for details....see sketch # 1 for direction of installation of tile.         |  |
| Line 61720       | Note:  |  |
| 4Nov20 / 25Nov20 |  |  |
| Inv.4800         | 1 - To supply & install the UPGRADE 3 - FLOOR TILE - KITCHEN / BREAKFAST TILE area in lieu of the standard floor tiles... see colour chart for details....see sketch # 1 for direction of installation of tile.  |  |
| Line 61721       | Note:  |  |
| 4Nov20 / 25Nov20 |  |  |
| Inv.4800         | 1 - To supply & installt he UPGRADE 2 - FLOOR TILE "STACKED" - - ENSUITE 2 FLOOR TILE in lieu of the standard floor tiles... see colour chart for details... see sketch # 2 for direction of insallation of tile |  |
| Line 61724       | Note:  |  |
| 4Nov20 / 25Nov20 |  |  |

Kingsmen (Thames) Inc. / Havelock Corners (Kingsmen)

Lot/Unit: 37    Phase/Building: 4B    Model/Floor Plan: Sheffield(5004)Elev A 4 BED-4+1  
BATH

|                  |  |  |
|------------------|--|--|
| Inv.4800         | 1 - To supply & installt he UPGRADE 2 - FLOOR TILE "STACKED" - - ENSUITE 3 FLOOR TILE in lieu of the standard floor tiles... see colour chart for details... see sketch # 2 for direction of insallation of tile |  |
| Line 61725       | Note:  |  |
| 4Nov20 / 25Nov20 |  |  |

|                  |  |  |
|------------------|--|--|
| Inv.4800         | 1 - To supply & installt he UPGRADE 2 - FLOOR TILE "STACKED" - - ENSUITE 4 FLOOR TILE in lieu of the standard floor tiles... see colour chart for details... see sketch # 2 for direction of insallation of tile |  |
| Line 61726       | Note:  |  |
| 4Nov20 / 25Nov20 |  |  |

TILE - WALL

|                  |  |  |
|------------------|--|--|
| Inv.4800         | 1 - Do not suply or insall any towel bars, toilet paper holders or soap dishes throughout all the bathrooms. |  |
| Line 61717       | Note:  |  |
| 4Nov20 / 25Nov20 |  |  |

TRIM

|                  |  |  |
|------------------|--|--|
| Inv.4800         | 1 - To supply & install the standard INTERIOR DOORS - UPGRADE TO SOLID CORE THROUGHOUT where applicable. |  |
| Line 61730       | Note:  |  |
| 4Nov20 / 25Nov20 |  |  |

EXTRAS AS PER OFFER

|  |  |
|--|--|
| 5 FREE APPLIANCES ? STAINLESS STEEL FRONT - FRIDGE: STOVE AND DISHWASHER. WHITE WASHER AND DRYER (SUPPLIED ONLY, NOT INSTALLED, FROM BUILDERS STANDARD LINE) TO ARRANGE DELIVERY ? CALL THE BRICK COMMERCIAL SALES DIVISION AT 1-877-353-2850.<br><i>Worksheet</i> Note: |  |
| VENDOR TO INSTALL CAPPED GAS LINE (ROUGH-IN ONLY) AT REAR OF HOME FOR FUTURE BBQ LOCATION.   LOCATION TO BE FINALIZED AT VENDORS SOLE DISCRETION.<br><i>Worksheet</i> Note:  |  |
| VENDOR TO INSTALL GAS LINE (ROUGH-IN ONLY) TO KITCHEN IN AT STOVE LOCATION (AS PER PLAN) TO INCLUDE 110V CODE REQUIREMENT.<br><i>Worksheet</i> Note:   |  |
| VENDOR TO SUPPLY & INSTALL AIR CONDITIONING UNIT, SIZED ACCORDINGLY, FROM VENDORS STANDARD SAMPLES.<br><i>Worksheet</i> Note:  |  |
| VENDOR TO INCLUDE LEVEL 1, 20CM GRANITE OR QUARTZ IN ALL BATHROOMS, AS PER PLAN, IN LIEU OF THE INCLUDED LAMINATE COUNTER TOPS. SELECTIONS TO BE MADE FROM BUILDERS STANDARD SAMPLES.<br><i>Worksheet</i> Note:  |  |



**Purchasers:** BHUPINDER SINGH HOTHI & NARINDER KAUI **Property:** 37 of Plan - Draft Approval SB17-03-08  
**Telephone Res. / Bus:** / **Project:** Kingsmen (Thames) Inc.  
**Decor Advisor:** Barbara Coccia **Model and Elevation:** Sheffield(5004) Elev A 4 BED-4+1 BATH

**Layout Changes:** ☒ Yes ☐ No **Sketch Attached:** ☒ Yes ☐ No **Exterior Colour Scheme:**

| 1. Cabinetry                            |                               |                             |               |
|---|-------------------------------|-----------------------------|---------------|
|   | Style and Colour              | Counter Top                 | Hardware      |
| Kitchen / Breakfast                     | #3 Camden Maple Shale Grey CL | #2, H/S Aspen 3cm.          | #12843 Handle |
| Kitchen Island                          | #3 Camden Maple Shale Grey CL | #2, H/S Aspen 3cm.          | #12843 Handle |
| Laundry Room                            | /                             |                             |               |
| Powder Room                             | #3 Camden Maple Shale Grey CL | #1, C/S #9141 Ice Snow 2cm. | #12843 Handle |
| Main Bathroom                           |                               |                             |               |
| Master Ensuite Bathroom                 | #3 Charleton 3DL Orchid       | #1, C/S #3040 Cement 2cm.   | #9671 Handle  |
| Second Ensuite Bathroom (If Applicable) | #3 Charleton 3DL Orchid       | #1, C/S #3040 Cement 2cm.   | #9671 Handle  |
| Bed #3's Bathroom                       | #3 Charleton 3DL Orchid       | #1, C/S #3040 Cement 2cm.   | #9671 Handle  |
| Bed #4's Bathroom                       | #3 Charleton 3DL Orchid       | #1, C/S #3040 Cement 2cm.   | #9671 Handle  |

|                   |   |   |   |
|-------------------|---|---|---|
| <b>Appliances</b> | <b>Custom Size Fridge</b>                                     | <b>Valance Lighting</b>                                       | <b>Microwave / Range Hood</b>                                 |
|                   | <input type="radio"/> Yes <input checked="" type="radio"/> No | <input type="radio"/> Yes <input checked="" type="radio"/> No | <input type="radio"/> Yes <input checked="" type="radio"/> No |
| <b>Comment</b>    | <b>Cooktop / Rangetop</b>                                     | <b>Built in Wall Oven</b>                                     | <b>Slide-in Range</b>   |
|                   | <input checked="" type="radio"/> Yes <input type="radio"/> No | <input checked="" type="radio"/> Yes <input type="radio"/> No | <input type="radio"/> Yes <input checked="" type="radio"/> No |

| 2. Flooring                   |   |
|-------------------------------|---|
|                               | Selection   |
| Foyer                         | **Upg. 3, 12 x 24" Mayfair Calacatta Oro HD polished Rect. Porcelain in a 70/30 off set pattern |
| Main Hall                     | 5" Elements Brushed Oak COHO  |
| Back Hall                     | /   |
| Breakfast                     | **Upg. 3, 12 x 24" Mayfair Calacatta Oro HD polished Rect. Porcelain in a 70/30 off set pattern |
| Laundry Room                  | **Upg. 3, 12 x 24" Mayfair Calacatta Oro HD polished Rect. Porcelain in a 70/30 off set pattern |
| Kitchen                       | **Upg. 3, 12 x 24" Mayfair Calacatta Oro HD polished Rect. Porcelain in a 70/30 off set pattern |
| Powder Room                   | **Upg. 3, 12 x 24" Mayfair Calacatta Oro HD polished Rect. Porcelain in a 70/30 off set pattern |
| Main Bathroom                 | Ens. 2's Bathroom: ** 12 x 24" Classic Calacatta HD Porcelain "STACKED"                         |
| Master Ensuite                | 12 x 24" Classic Calacatta HD Porcelain "STACKED"   |
| Bathroom (If Applicable)      | Shower floor mosaic for Master ens, Bed #2 & #3: 2 x 2" Soho White Matte                        |
| Mud Room                      | /   |
| Bed #3 & #4's Bathroom        | **12 x 24" Classic Calacatta HD Porcelain "STACKED"   |
| Living Room                   | 5" Elements Brushed Oak COHO  |
| Dining Room                   | 5" Elements Brushed Oak COHO  |
| Family / Great Room           | 5" Elements Brushed Oak COHO  |
| Den / Library / Study         | /   |
| Basement Landing (If Applies) |   |
| Lower Landing (If Applicable) | 5" Elements Brushed Oak COHO  |
| Upper Landing                 | 5" Elements Brushed Oak COHO  |
| Upper Hall                    | 5" Elements Brushed Oak COHO  |
| Master Bedroom                | 5" Elements Brushed Oak COHO  |
| Bedroom #2                    | 5" Elements Brushed Oak COHO  |
| Bedroom #3                    | 5" Elements Brushed Oak COHO  |
| Bedroom #4                    | 5" Elements Brushed Oak COHO  |
| Bedroom #5                    | /   |
| Shower Jamb/sill              | Master Ens, Ens. #2, Bed #3's Bathroom: Anatolia Marmiline SNOW                                 |

Flooring Continued on Page 2

Initial: \_\_\_\_\_

Page 1 of 3

DEC 10 2020

**Purchasers:** BHUPINDER SINGH HOTHI & NARINDER KAUI **Property:** 37 of Plan - Draft Approval SB17-03-08  
**Telephone Res. / Bus:** / **Project:** Kingsmen (Thames) Inc.  
**Decor Advisor:** Barbara Coccia **Model and Elevation:** Sheffield(5004)Elev A 4 BED-4+1 BATH

### 2. Flooring - Continued -

|                  |        |                   |
|------------------|--------|-------------------|
| Upgrade Underpad | Type   | Area              |
|                  | /      | /                 |
| Carpet on Stairs | Capped | Runner - *Upgrade |
| Comment          |        | /                 |
| /                |        |                   |

### 3. Plumbing Fixtures / Faucets

|                |          |                        |          |             |          |
|----------------|----------|------------------------|----------|-------------|----------|
| Kitchen        | Standard | Second Ensuite         | Standard | Powder Room | Standard |
| Master Ensuite | Standard |                        |          | Other Room  | /        |
| Main Bathroom  |          | Bed #3 & #4's Bathroom | Standard |             |          |

#### Comment

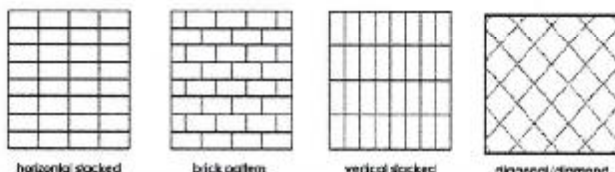
Purchaser has upgraded the undermount kitchen sink, see invoice for details. Purchaser has upgraded to under mount sinks in all bathroom, see invoice for details; still to install the standard lav. faucets.

### 4. Wall Tile

|                     | Tile Selection     | Listello                 | Insert                   | Insert Selection |
|---------------------|--------------------|--------------------------|--------------------------|------------------|
| Main Bathroom       | /                  | <input type="checkbox"/> | <input type="checkbox"/> |                  |
| Master Ensuite      |                    |                          |                          |                  |
| Tub Deck            | /                  | <input type="checkbox"/> | <input type="checkbox"/> |                  |
| Tub Apron           | /                  | <input type="checkbox"/> | <input type="checkbox"/> |                  |
| Tub Surround        | /                  | <input type="checkbox"/> | <input type="checkbox"/> |                  |
| Shower Stall        | 8 x 10" Malena Ice | <input type="checkbox"/> | <input type="checkbox"/> |                  |
| Second Ensuite      | 8 x 10" Malena Ice | <input type="checkbox"/> | <input type="checkbox"/> |                  |
| Bed #3s' Bathroom   | 8 x 10" Malena Ice | <input type="checkbox"/> | <input type="checkbox"/> |                  |
| Bed #4's Bathroom   | 8 x 10" Malena Ice | <input type="checkbox"/> | <input type="checkbox"/> |                  |
| Kitchen Backsplash  | /                  | <input type="checkbox"/> | <input type="checkbox"/> |                  |
| Complete Backsplash | /                  | <input type="checkbox"/> | <input type="checkbox"/> |                  |

#### Comment

Supply and install all wall tiles in ALL bathrooms (Master, Bedroom #2, #3, #4), where applicable on the 10" horizontally stacked.



### 5. Fireplace

|                | Living Room           |                       |                                  | Family Room           |                       |                                  | Other Room - Specify Great room |                                  |                       |
|----------------|-----------------------|-----------------------|----------------------------------|-----------------------|-----------------------|----------------------------------|---------------------------------|----------------------------------|-----------------------|
|                | Purchased             | As Per Plan           | N/A                              | Purchased             | As Per Plan           | N/A                              | Purchased                       | As Per Plan                      | N/A                   |
| Fireplace Type | <input type="radio"/> | <input type="radio"/> | <input checked="" type="radio"/> | <input type="radio"/> | <input type="radio"/> | <input checked="" type="radio"/> | <input type="radio"/>           | <input checked="" type="radio"/> | <input type="radio"/> |
| Mantle Type    |                       |                       |                                  |                       |                       |                                  | Front Facing                    |                                  |                       |
| Over Mantle    |                       |                       |                                  |                       |                       |                                  | NF-8                            |                                  |                       |
| Colour / Stain |                       |                       |                                  |                       |                       |                                  | White                           |                                  |                       |
| Surround       |                       |                       |                                  |                       |                       |                                  | /                               |                                  |                       |
| Hearth         |                       |                       |                                  |                       |                       |                                  | /                               |                                  |                       |
| Comment        | /                     |                       |                                  |                       |                       |                                  |                                 |                                  |                       |

BGA

N/K

Initial: \_\_\_\_\_

Page 2 of 3



DEC 10 2020

**Purchasers:** BHUPINDER SINGH HOTHI & NARINDER KAUI **Property:** 37 of Plan - Draft Approval SB17-03-08  
**Telephone Res. / Bus:** / **Project:** Kingsmen (Thames) Inc.  
**Decor Advisor:** Barbara Coccia **Model and Elevation:** Sheffield(5004) Elev A 4 BED-4+1 BATH

### 6. Trim Carpentry

Door Hardware

Interior Trim

Comment

Purchaser has upgraded to solid interior doors throughout, see invoice for details.

#### Interior Doors

☐ 2 Panel Arch Top

☒ 2 Panel Square Top

☐ 6 Panel

Initial for Door Style N.K.

### 7. Railings and Pickets

Railing Package

Railing Colour

Picket Colour

Wood Stairs ☐ No ☒ Oak

Tread Colour

Comment

### 8. Plaster Mouldings and Medallions

Foyer

Main Hall

Living Room

Dining Room

Family Room

Kitchen/Breakfast

Den/Library

Lower Landing

Comment

### 9. Wall Paint

Kingsmen White

#### Smooth Ceilings

☐ First Floor

☐ First Floor incl. Second Floor Hall

☐ First and Second Floor

☒ Throughout

☐ Not Applicable

Trim Paint

### 10. Additional Comments

### 11. Disclaimers and Notes

- Colours of all materials are as close as possible to builder's selection, but not necessarily identical due to variances in manufacturing.
- Any extras listed above are null and void unless accompanied by a separate invoice/amendment. Said invoice must be paid in full.
- The Purchaser acknowledges that after Interior Colour Selection form is signed and dated, no further changes will be permitted other than re-selection due to unavailability. BA N.K. Purchaser's Initials
- The Purchaser acknowledges reading and accepting the "Kingsmen Group Décor Centre Disclaimers" form. This document contains other miscellaneous disclaimers.

This Interior Colour Selection is final and approved by:

Purchaser:

Signature: [Signature]

Date: Nov 25/2020

Signature: [Signature]

Date: 25 Nov 2020

Vendor: [Signature]

Kingsmen (Thames) Inc.

# SCHEDULE "B-1"

## Floor Plan

DEC 10 2020

Model: Sheffield(5004) Elev A 4 BED-4+1 BATH

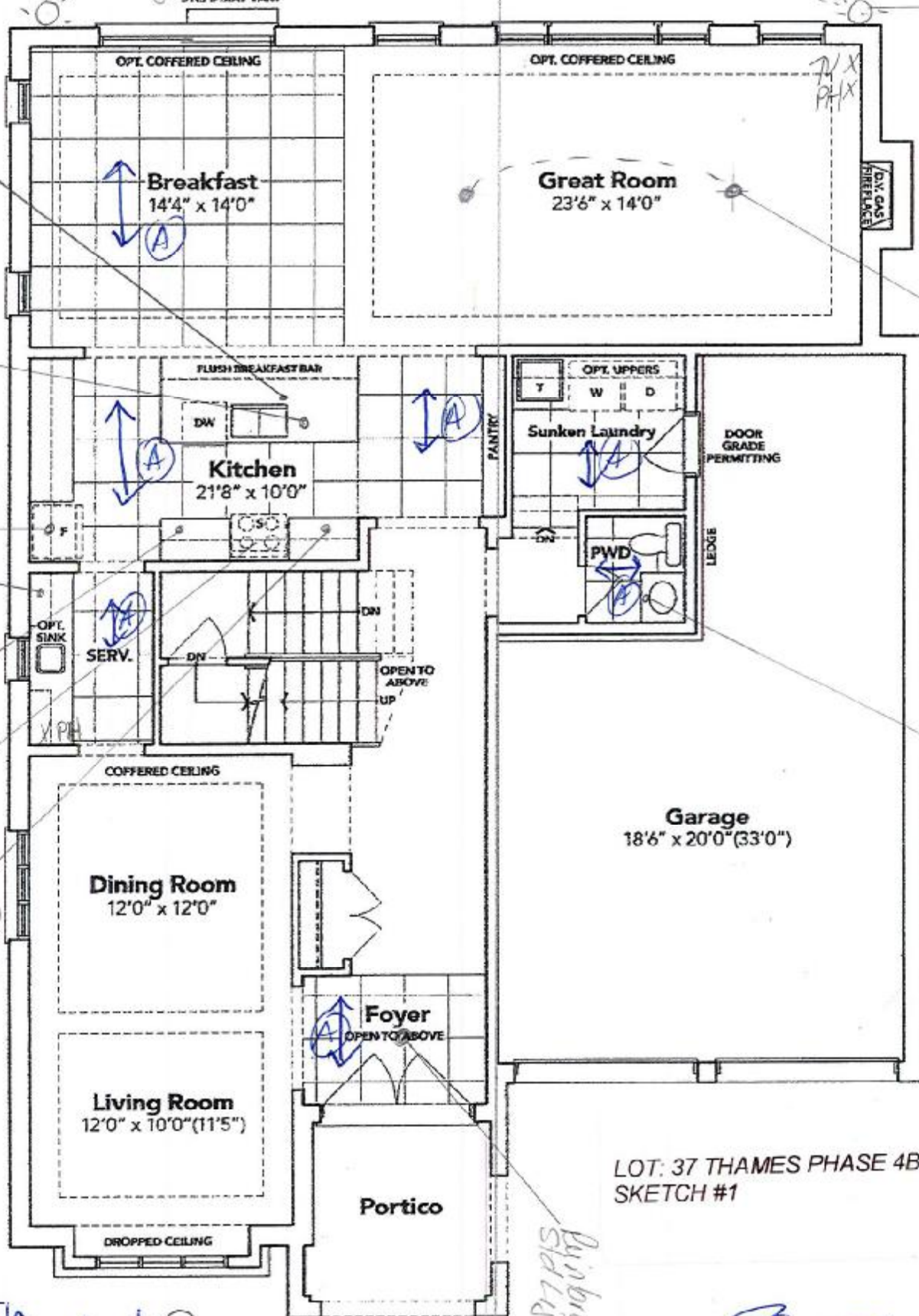
Lot 37

Phase 4B

Sketch #1 BC

Two Additional Exterior  
Lights / Sep. Switch

STEPS MAY VARY



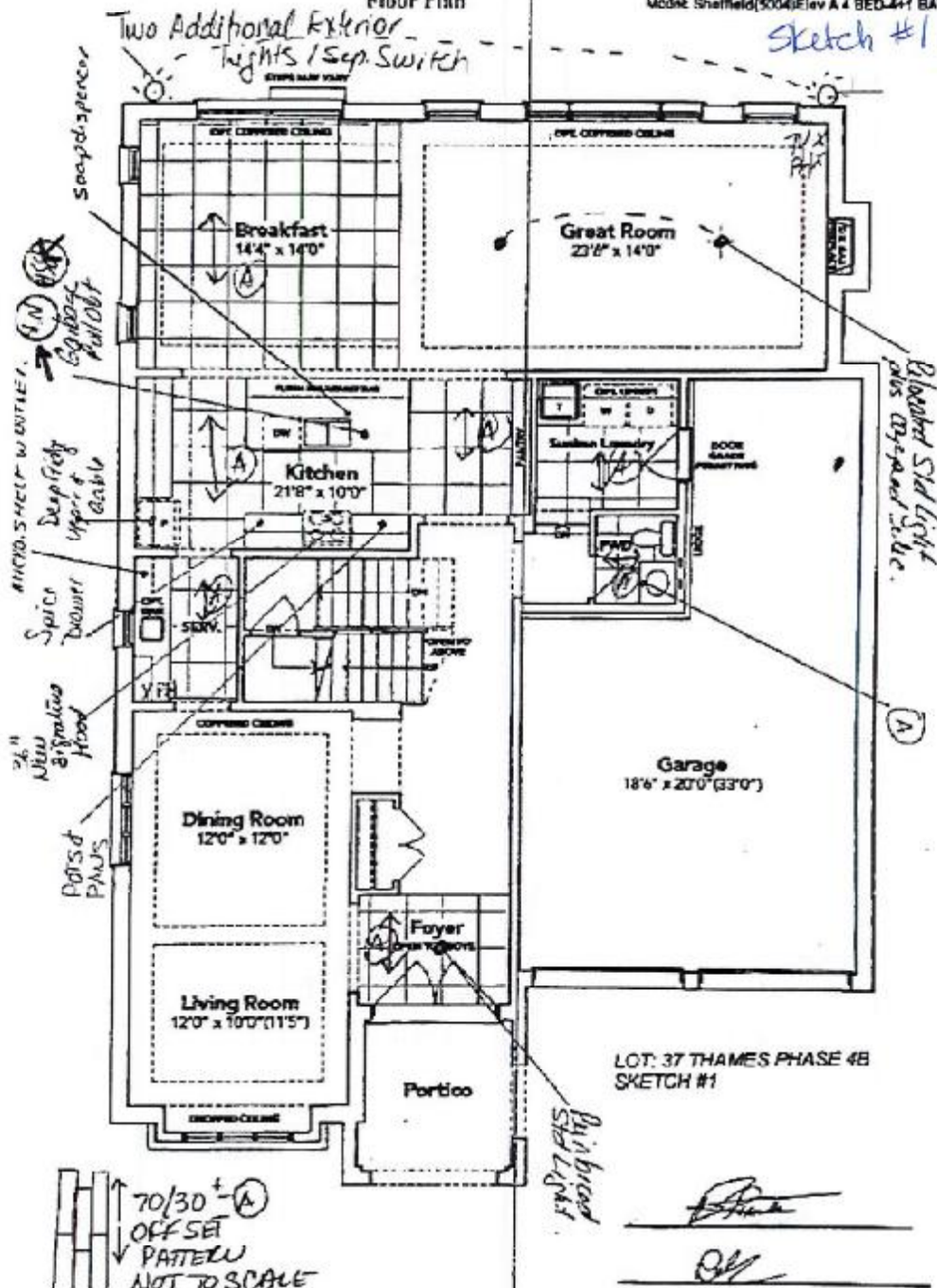
## GROUND FLOOR EL. A

The floor plans and elevations shown are pre-construction plans and may be revised or improved as necessitated by architectural controls and the construction process. The measurements adhere to the rules and regulations of the TARIION Warranty Corporation's official method for the calculation of floor area. Materials, specifications and floor plans are subject to change without notice. All house renderings are artist's concept only. Actual usable floor space may vary from the stated floor area. All options shown are upgrades. E. & O. E.

SCHEDULE "B-1" - Page 1 of 3



Sketch #1 BC



LOT: 37 THAMES PHASE 4B  
SKETCH #1

Phinbriat  
Std Lignar

**GROUND FLOOR EL. A**

The floor plans and elevations shown are pre-construction plans and may be revised or improved as necessitated by architectural controls and the construction process. The measurements adhere to the rules and regulations of the TAKION Warranty Corporation's official method for the calculation of floor area. Materials, specifications and floor plans are subject to change without notice. All house renderings are artist's concept only. Actual usable floor space may vary from the stated floor area. All options shown are upgrades.

E. & O. E.

SCHEDULE "B-1" - Page 1 of 3

Initials: SL (NK)

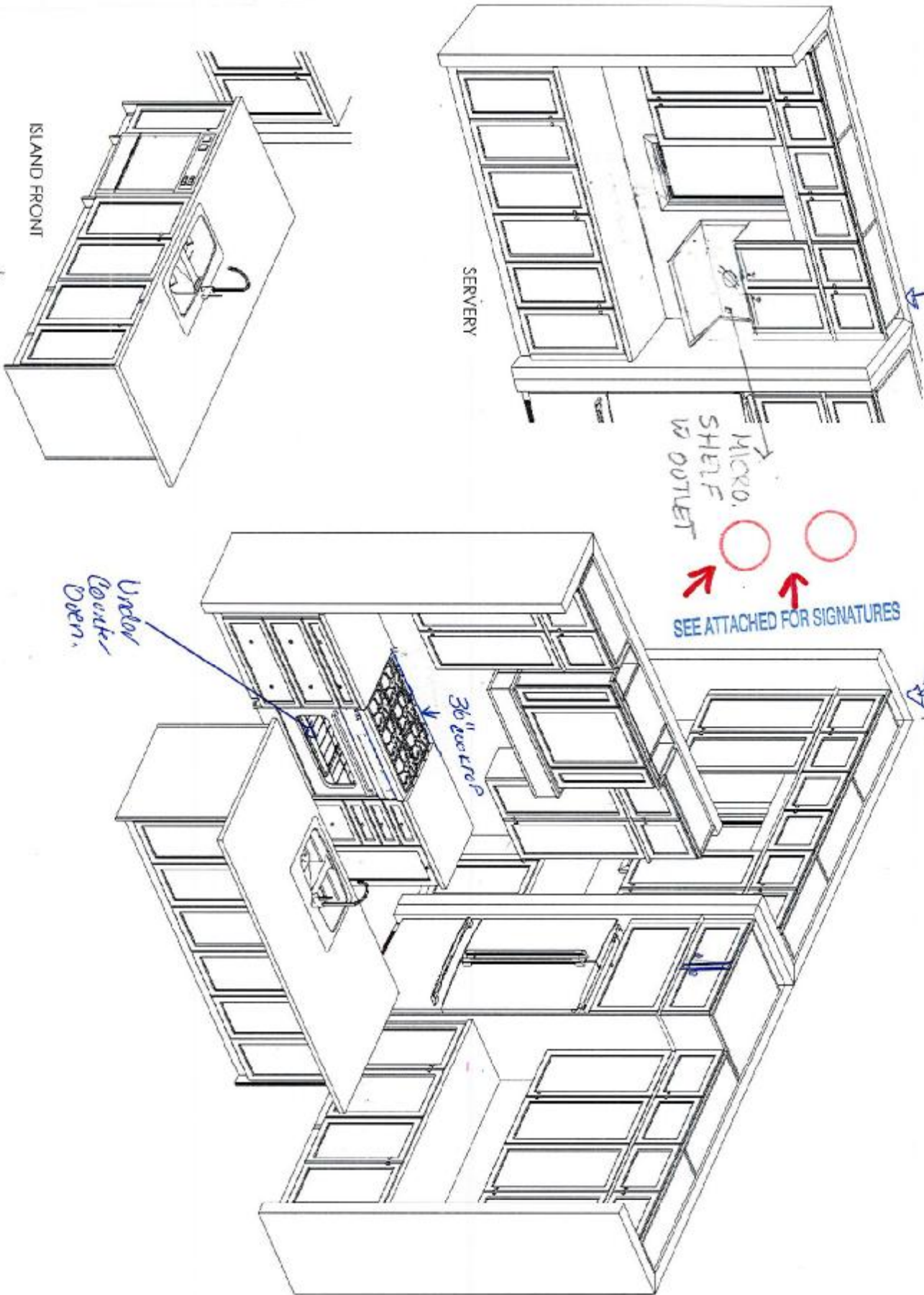
inMS\_014.rpt 25-Sep-18

LOT 37 THAMES PH. 4 B  
RE: 3D KITCHEN SKETCH

*[Signature]*

*[Signature]*

Kitchen



\* This sketch is for DESIGN PURPOSES ONLY – It is not meant to be an exact rendition.



Kingsmen  
Havelock Corners PH 4  
(Woodstock)  
Sheffield/5004

Date: November 25, 2020  
Scale: Not To Scale

Approved By Builder:

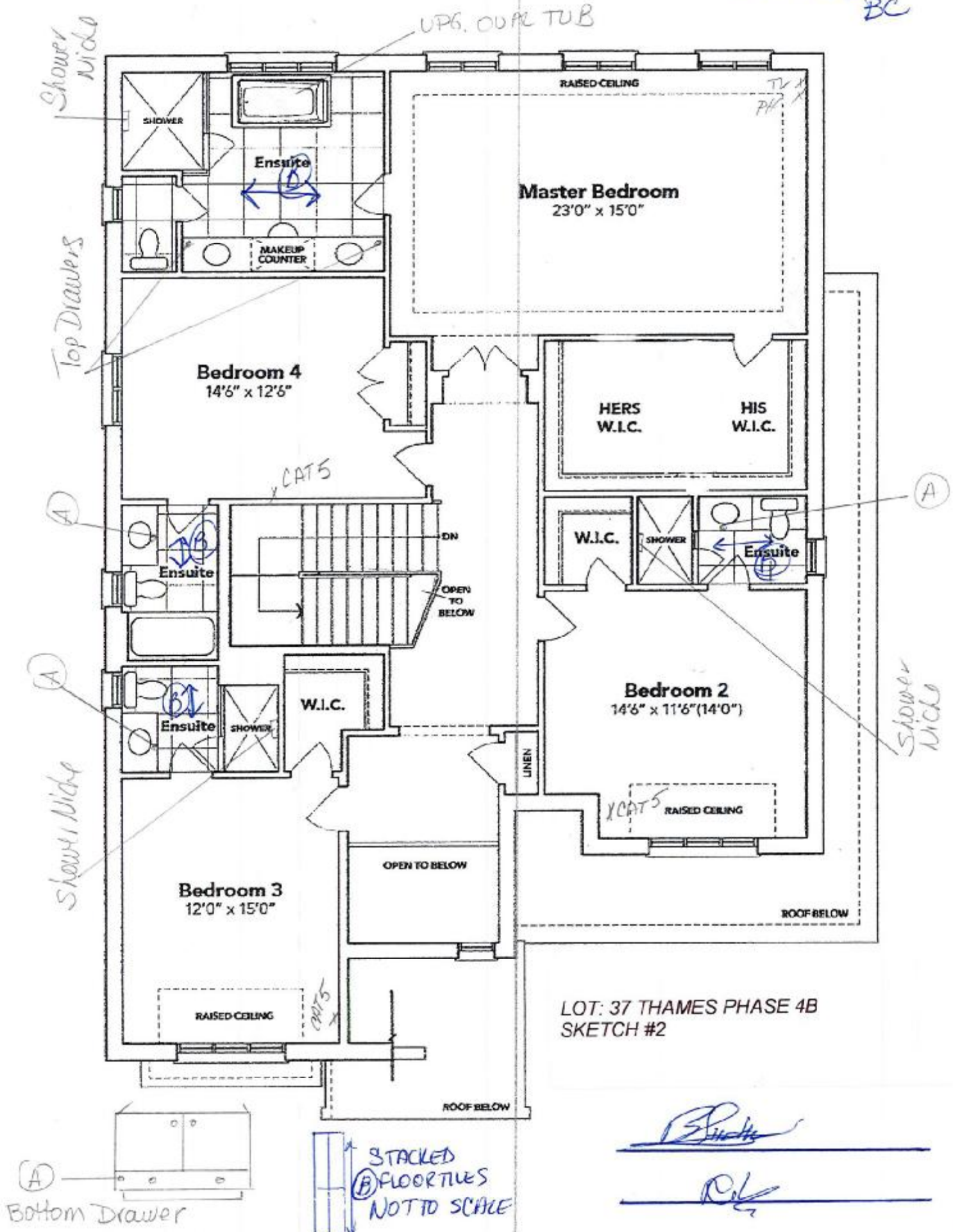
Date:



SCHEDULE "B-1"  
Floor Plan

DEC 10 2020  
Model: Sheffield(5004)Elev A 4 BED-4+1 BATH

Sketch #2  
BC



SECOND FLOOR EL. A

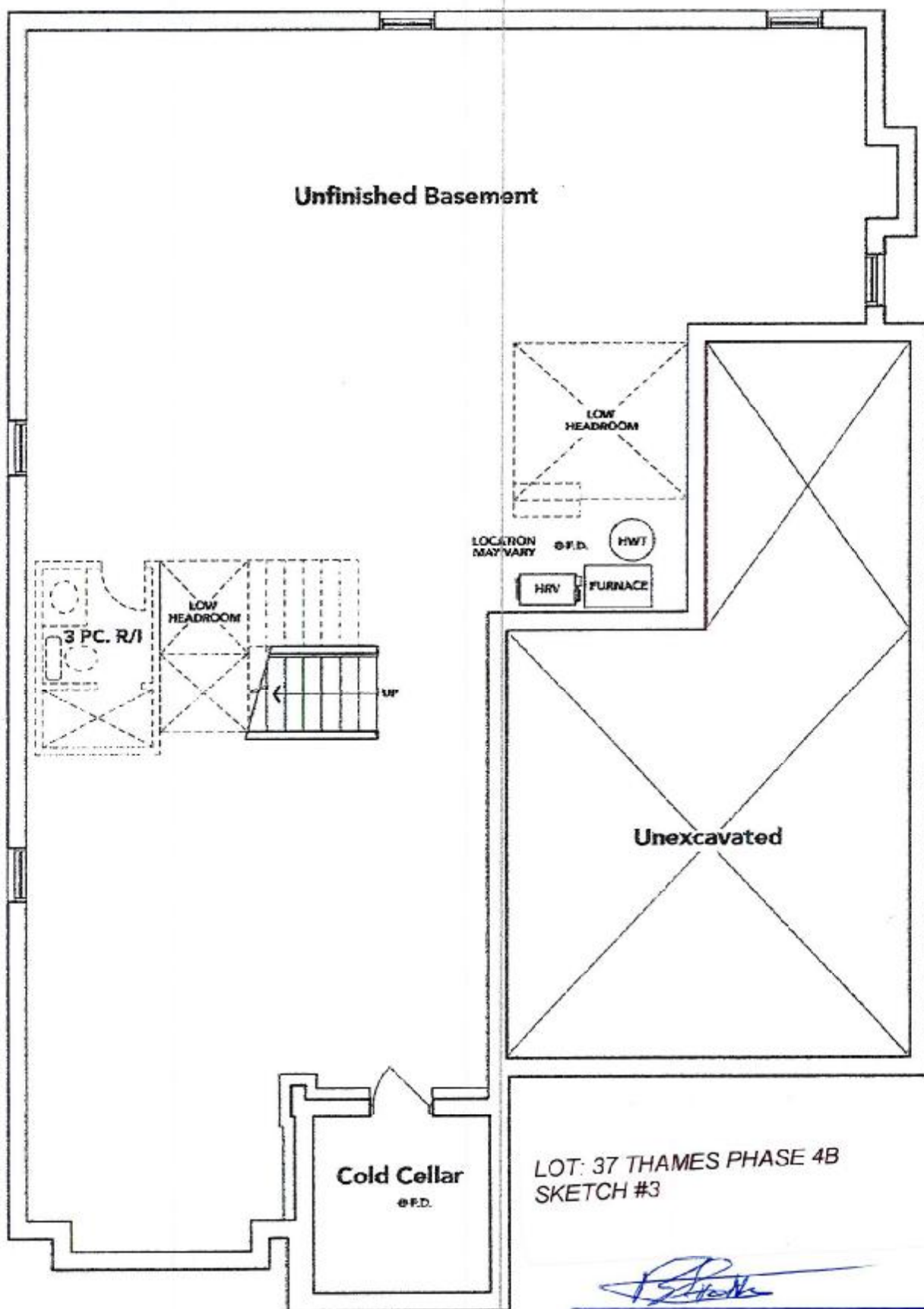
The floor plans and elevations shown are pre-construction plans and may be revised or improved as necessitated by architectural controls and the construction process. The measurements adhere to the rules and regulations of the TARION Warranty Corporation's official method for the calculation of floor area. Materials, specifications and floor plans are subject to change without notice. All house renderings are artist's concept only. Actual usable floor space may vary from the stated floor area. All options shown are upgrades. E. & O. E.

**SCHEDULE "B-1"**  
**Floor Plan**

DEC 10 2020

LOT 37  
Phase 4B  
Model: Sheffield(5004)Elev A 4 BED-4+1 BATH

*Sketch #3 BC*



LOT: 37 THAMES PHASE 4B  
SKETCH #3

*[Signature]*  
*[Signature]*

**BASEMENT EL. A**

The floor plans and elevations shown are pre-construction plans and may be revised or improved as necessitated by architectural controls and the construction process. The measurements adhere to the rules and regulations of the TARION Warranty Corporation's official method for the calculation of floor area. Materials, specifications and floor plans are subject to change without notice. All house renderings are artist's concept only. Actual usable floor space may vary from the stated floor area. All options shown are upgrades. E. & O. E.

SCHEDULE "B-1" - Page 3 of 3

Initials: *[Signature]* *[Signature]*



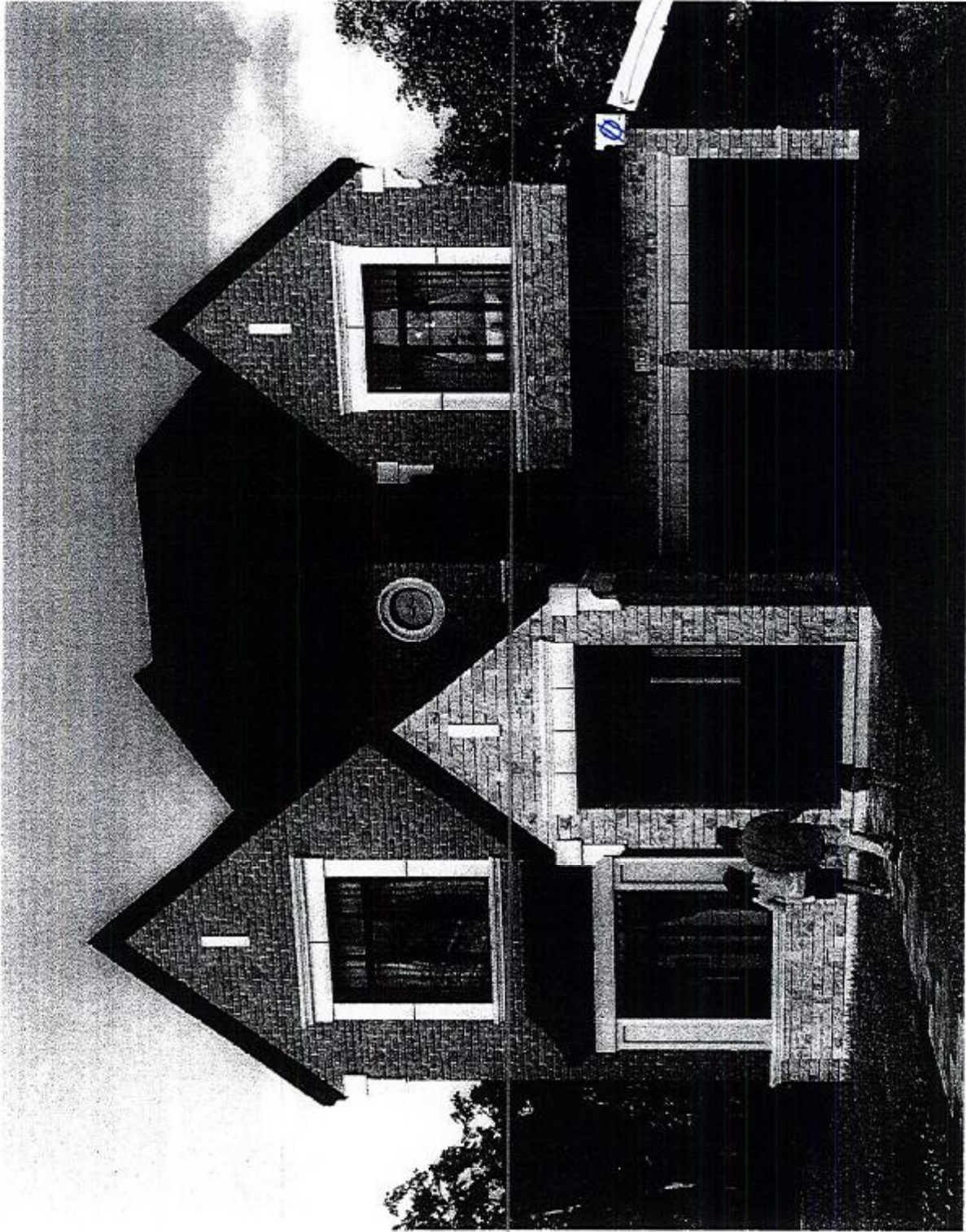
SCHEDULE "B-2"  
Elevation

DEC 10 2020

Lot 37  
Phase 4B  
Model: Sheffield(5004)Elev A 4 BED-4+1 BATH

LOT: 37 THAMES PHASE 4B  
SKETCH #4

*Holiday Outlet  
on Sep. Switch.*



*[Signature]*

*[Signature]*

The floor plans and elevations shown are pre-construction plans and may be revised or improved as necessitated by architectural controls and the construction process. The measurements adhere to the rules and regulations of the TARION Warranty Corporation's official method for the calculation of floor area. Materials, specifications and floor plans are subject to change without notice. All house renderings are artist's concept only. Actual usable floor space may vary from the stated floor area. All options shown are upgrades. E. & O. E.

DEC 10 2020

LOT: 37 THAMES PHASE 4B  
RE: UPG. OVAL TUB FOR MASTER  
ENSUITE BATHROOM

*[Signature]*

*[Signature]*



Brooke™ | 1

## Brooke™

Categories: Acrylic Freestanding

### DESCRIPTION

68" Freestanding Bath  
SKU #: CF2002

### FEATURES

- Installation friendly two piece design
- Accepts deck mounted faucet
- Includes a chrome integral pop up drain and rectangular overflow
- ~~• Brushed nickel drain and overflow covers available~~
- Centre drain
- Includes levelling feet
- Available in White Only

### DIMENSIONS

68" x 36" x 23"





DEC 10 2020

LOT: 37 THAMES PHASE 4B  
RE: UPG. UNDER MOUNT KITCHEN  
SINK, FAUCET AND SOAP DISPENSER



Soap or Lotion  
Dispenser

Model 3944

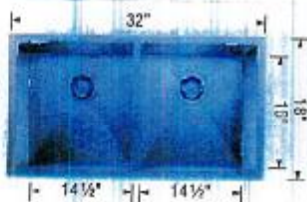
MOEN "Chrome"

*[Signature]*

*[Signature]*

QUATRUS®  
Undermount

QUATRUS® U-2



Under Specifications

Undermount  
Minimum Cabinet Size\*  
36" (915 mm)  
Bowl Depth  
9" (229 mm)  
Cubed Weight  
55 lb. (25 kg)

Model  
#  
401247

List Price  
\$ 888

DEC 18 2023

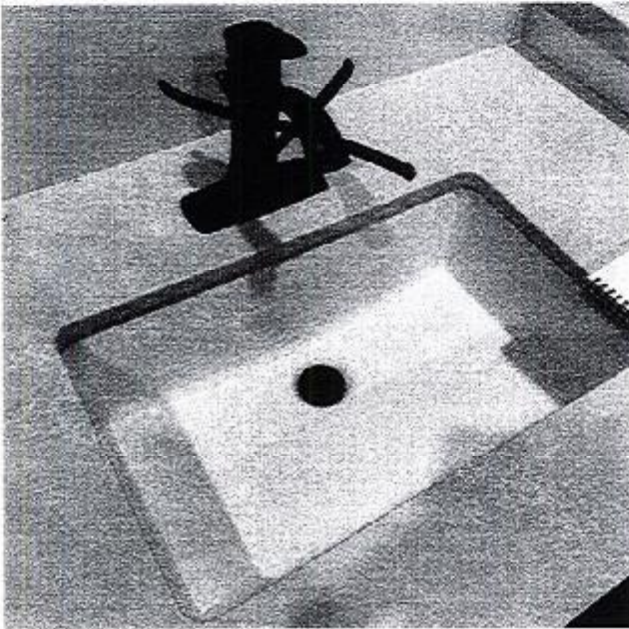
LOT: 37 THAMES PHASE 4B  
RE: UPG. UNDER MOUNT VANITY SINKS  
STILL TO INSTALL THE STANDARD LAV  
FAUCETS

*[Signature]*

*[Signature]*

**KINGSIIEN**  
GROUP INC.

## Main Floor Vanity Display



### DISPLAY ITEMS

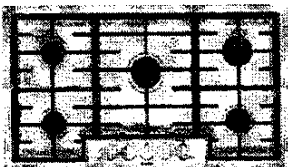
#### **Sink ( Item 9)**

Contrac Catena Undermount  
Model 4210CIY

LOT: 37 THAMES PHASE 4B  
RE: 36" COOK TOP SPEC'S

36" Gas Cooktop

800 Series – Stainless Steel NGM8656UC



NGM8656UC  
Stainless Steel

Also available in:  
Black w/Black NGM8646UC  
Stainless  
Knobs

Bosch gas cooktops are engineered to perform precisely, offering high heat and low simmer options for optimal cooking flexibility.

- Features & Benefits
- Powerful 19,000 BTU burner for boiling, searing and stir-frying

OptiSim® Burner – simmer delicate sauces and melt chocolate without scorching

Electronic re-ignition will automatically re-ignite the burner in case the flame goes out

Continuous grates make moving heavy pots easier

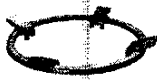
Distinctive red LED light indicates burners are on

| General Properties                    |                 |
|---------------------------------------|-----------------|
| Knob material                         | Metal           |
| Sealed burners                        | Yes             |
| Grate material                        | Cast iron       |
| Element Performance                   |                 |
| Total BTU load (NG / LP)              | 58,500 / 47,300 |
| Power of front left burner (NG / LP)  | 12,000 / 9,100  |
| Power of back left burner (NG / LP)   | 10,000 / 9,100  |
| Power of center burner (NG / LP)      | 19,000 / 15,000 |
| Power of back right burner (NG / LP)  | 5,500 / 5,000   |
| Power of front right burner (NG / LP) | 12,000 / 9,100  |
| Technical Details                     |                 |
| Watts                                 | 360 W           |
| Circuit breaker                       | 15 A            |
| Volts                                 | 120 V           |
| Frequency                             | 60 Hz           |
| Plug type                             | 3-prong         |
| Power cord length                     | 60"             |
| Energy source                         | Gas             |
| Convertible to LP (kit required)      | Yes             |



| Dimensions & Weight                  |                                |
|--------------------------------------|--------------------------------|
| Overall appliance dimensions (HxWxD) | 3 13/16" x 37" x 21 1/4"       |
| Required cutout size (HxWxD)         | 3 13/16" x 34 15/16" x 19 1/8" |
| Minimum distance from counter front  | 1 7/8"                         |
| Minimum distance from rear wall      | 3"                             |
| Net weight                           | 39 lbs                         |

| Accessories – Included |                   |
|------------------------|-------------------|
| Included               | LP conversion kit |
| Accessories – Optional |                   |



HEZ298102  
Working ring



HEZ27751  
Cooktop control knob kit, black stainless steel

† To be fully ADA compliant, these units must be installed according to ADA guidelines. Please check current ADA requirements for guidance on installation.

Accessories: To purchase Bosch accessories, cleaners & parts please visit [www.bosch-home.com/us/store](http://www.bosch-home.com/us/store) or call 1-800-944-2984 (Mon-Fri 9 am to 6 pm PST, Sat 9 am to 3 pm PST).

Notes: All height, width and depth dimensions are shown in inches. BSH reserves the absolute and unrestricted right to change product materials and specifications, at any time, without notice. Consult the product's installation instructions for final dimensional data and other data is prior to making cutout.

Warranties: Please see Use & Care manual or Bosch website for statement of limited warranty.

For more information on our entire line of products, go to [www.bosch-home.com/us](http://www.bosch-home.com/us) or call 1-800-944-2984

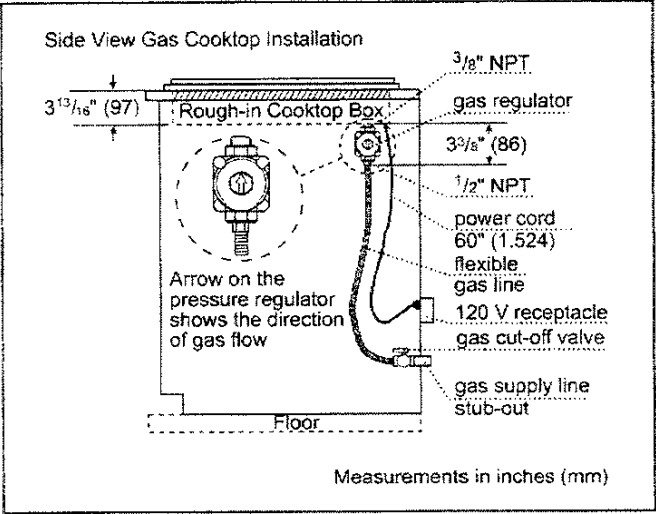
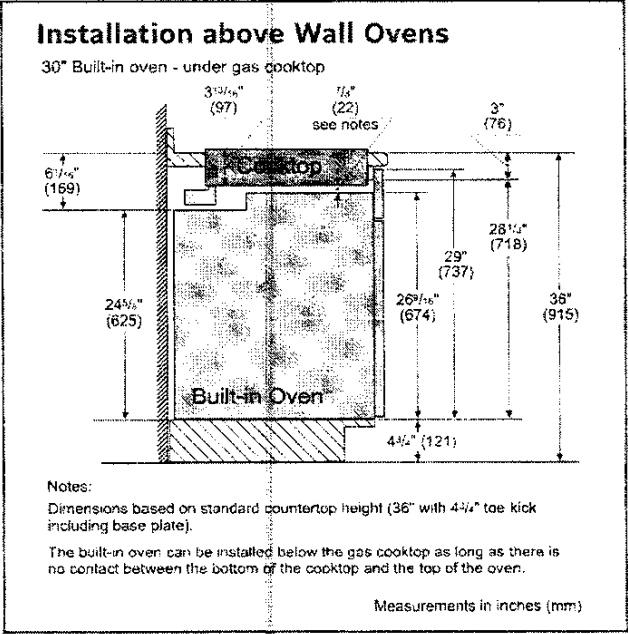
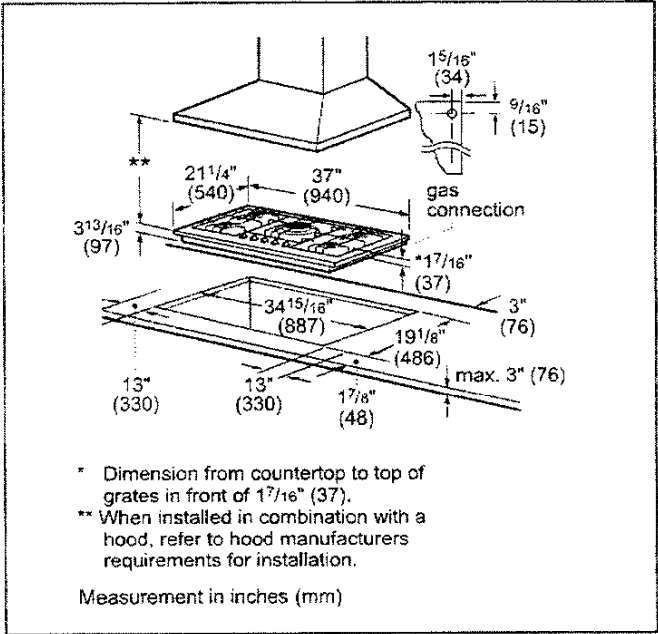
© BSH Home Appliances Corporation. All rights reserved. Bosch is a registered trademark of Robert Bosch GmbH.

36" Gas Cooktop

800 Series – Stainless Steel NGM8656UC



Installation Details



*[Signature]* 25/11/2020  
*[Signature]* 1/25/11/2020

**Accessories:** To purchase Bosch accessories, cleaners & parts please visit [www.bosch-home.com/us/store](http://www.bosch-home.com/us/store) or call 1-800-944-2904 (Mon to Fri 9 am to 6 pm PST, Sat 9 am to 3 pm PST).  
**Notes:** All height, width and depth dimensions are shown in inches. BSH reserves the absolute and unrestricted right to change product materials and specifications at any time, without notice. Consult the product's installation instructions for final dimensional data and other details prior to making layout.  
**Warranties:** Please see Use & Care manual or Bosch website for statement of limited warranty.  
For more information on our entire line of products, go to [www.bosch-home.com/us](http://www.bosch-home.com/us) or call 1-800-944-2904  
© BSH Home Appliances Corporation. All rights reserved. Bosch is a registered trademark of Robert Bosch GmbH.



DEC 10 2020

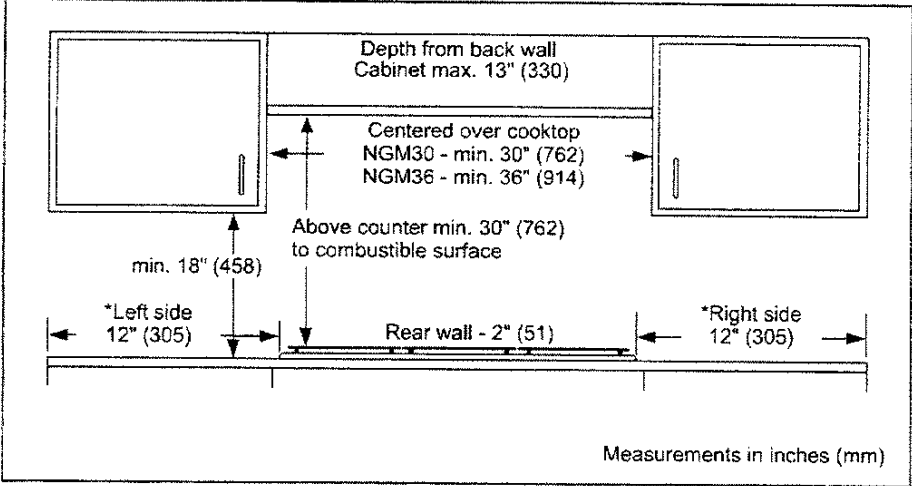
LOT: 37 THAMES PHASE 4B  
RE: 36" COOK TOP SPEC'S

36" Gas Cooktop

800 Series – Stainless Steel NGM8656UC



Installation Details



*[Signature]*

*[Signature]*

25/11/2020

25/11/2020

**Accessories:** To purchase Bosch accessories, cleaners & parts please visit [www.bosch-home.com/us/store](http://www.bosch-home.com/us/store) or call 1-800-944-2964 (Mon to Fri 9 am to 6 pm PST, Sat 9 am to 3 pm PST).  
**Notes:** All height, width and depth dimensions are shown in inches. BSH reserves the absolute and unrestricted right to change product materials and specifications, at any time, without notice. Consult the product's installation instructions for final dimensional data and other details prior to making cutout.  
**Warranties:** Please see Use & Care manual or Bosch website for statement of limited warranty.  
For more information on our entire line of products, go to [www.bosch-home.com/us](http://www.bosch-home.com/us) or call 1-800-944-2964  
© BSH Home Appliances Corporation. All rights reserved. Bosch is a registered trademark of Robert Bosch GmbH.

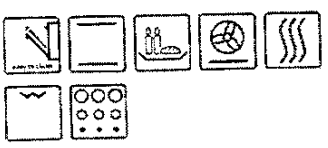
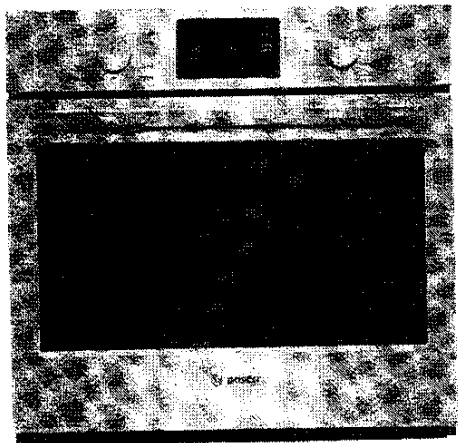
LOT: 37 THAMES PHASE 4B  
RE: UNDER COUNTER BUILT IN OVEN  
SPEC'S

DEC 10 2020



Ovens

30" Single Wall Oven  
500 Series - Stainless Steel  
HBL5451UC



Introducing a Newly Designed and Engineered Bosch Wall Oven Featuring European Convection and Heavy-duty Metal Knobs

- Genuine European Convection for Even Baking Results on Multiple Levels.
- Heavy-duty Metal Knobs for a Premium Look and Feel.
- Wall Ovens are Compatible with Most Competitors' Cut-Outs.
- The Wall Oven is Designed to be Installed Flush with your Cabinetry.

Technical Data

|   |   |
|---|---|
| Cooking mode :                              | 3rd element convection, Convection Bake, Convection Broil, Convection Roast, Conventional heat, Dough proving setting, Half width variable grill, Pizza setting, Top heating, 1/3 bottom heat., warming |
| Integrated Cleaning system :                | Self Clean  |
| Interior Lights - cavity 1 :                | 1   |
| Timer settings :                            | Alarm, Off, On, timer   |
| Included accessories :                      | 2 x oven racks /upper   |
| Bake Element Wattages cavity 1 (W) :        | 2400  |
| Broil Element Wattages cavity 1 (W) :       | 3800  |
| Convection Element Wattages cavity 1 (W) :  | 2000  |
| UPC code :                                  | 825225906476  |
| Product color :                             | Stainless steel   |
| Energy source :                             | Electric  |
| Watts (W) :                                 | 5000  |
| Current (A) :                               | 30  |
| Volts (V) :                                 | 240/208   |
| Frequency (Hz) :                            | 60  |
| Approval certificates :                     | CSA   |
| Power cord length (in) :                    | 50"   |
| Power cord length (cm) :                    | 127   |
| Plug type :                                 | fixed connection, no plug   |
| Required cutout size (HxWxD) (in) :         | 27" - 28 5/8" x 28 1/2" x 23 1/2"   |
| Required cutout size (HxWxD) (mm) :         | 686 x 724 x 597   |
| Overall appliance dimensions (HxWxD) (mm) : | 737 x 755 x 622   |
| Product packaging dimensions (HxWxD) (in) : | 31 1/4" x 34" x 31 1/2"   |
| Net weight (lbs) :                          | 160   |
| Net weight (kg) :                           | 72.0  |
| Gross weight (lbs) :                        | 177   |
| Gross weight (kg) :                         | 80.0  |

Included accessories

2 x oven racks /upper

Optional accessories

HEZTR301 : Telescopic Oven Rack 30"

*[Signature]* 25/11/2020  
*[Signature]* 25/11/2020

LOT: 37 THAMES PHASE 4B  
RE: UNDER COUNTER BUILT IN OVEN  
SPEC'S

DEC 10 2020



## Ovens

**30" Single Wall Oven**  
**500 Series - Stainless Steel**  
**HBL5451UC**

**Introducing a Newly Designed and  
Engineered Bosch Wall Oven Featuring  
European Convection and Heavy-duty Metal  
Knobs**

### Design

- Heavy-duty Metal Knobs

### Performance

- 10 Specialized Cooking Modes - Gourmet Cooking Made Easy
- Custom Cooking Modes: Pizza, Pie, Warm and Proof
- Genuine European Convection
- Temperature Conversion for Convection Cooking

### Efficiency

- EcoClean™ 2-Hour Self-Clean Cycle

### Convenience

- One Oven Light to Better Monitor Cooking Progress
- Kitchen Timer
- Extra Large Door Window for Easy Monitoring of Cooking Process
- Star-K certified, 100°-450° F

### Capacity

- Large Capacity at 4.6 Cu Ft.
- Recessed 8 Pass Broil Element for Increased Capacity and Safety

*[Signature]*

25/11/2020

*[Signature]*

25/11/2020

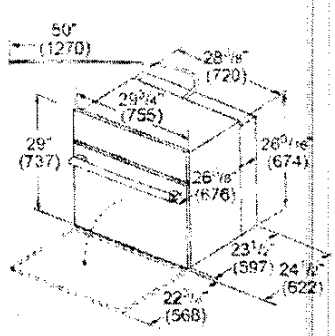
LOT: 37 THAMES PHASE 4B  
RE: UNDER COUNTER BUILT IN OVEN  
SPEC'S

DEC 10 2020

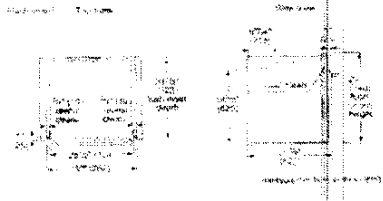
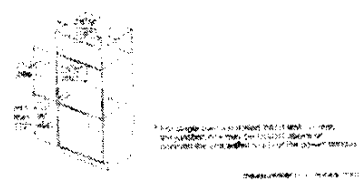


Ovens

30" Single Wall Oven  
500 Series - Stainless Steel  
HBL5451UC



measurements in inches (mm)



*[Signature]* 25/11/2020  
*[Signature]* 25/11/2020