



CONSTRUCTION SUMMARY

Kingsmen (Thames) Inc. / Havelock Corners (Kingsmen)

Lot/Unit: 8    Phase/Building: 4A    Model/Floor Plan: Spencer (4204) Elev B 4 Bed - 4+1 Bath

CABINETRY

Inv.4655	1 - See fridge spec's and Gas stove spec's attached.	
Line 59727	Note:	
27May20 / 23Nov20		

COUNTER TOP

Inv.4655	1 - As per schedule "PE": Vendor to include level 1, 2 cm granite or quartz in all bathrooms, as per plan, in lieu of the included laminate counter tops. Selections to be made from builders standard samples.	
Line 59631	Note:	
27May20 / 23Nov20		

ELECTRICAL

Inv.4655	1 - To supply & install the standard T.V. rough in in the great room and master bedroom...see sketch # 1 & # 2	
Line 59636	Note: Install the T.V. rough in at approx. 66 " + - up from the floor centered + - to the F/P mantle in the great room.	
27May20 / 23Nov20      This is for a futrue wall mount t.v.		
Inv.4655	1 - To supply & install the standard Phone rough in in the kitchen, master bedroom and media room area on the second floor...see sketch # 1 & # 2	
Line 59637	Note:	
27May20 / 23Nov20		
Inv.4655	1 - To SUPPLY AND INSTALL AN ADDITIONAL BASIC RECEPTACLE (NOT DEDICATED) at approx. 66 " + - up from the floor centered to the F/P mantle	
Line 59638	Note: in the great room...see sketch # 1	
27May20 / 23Nov20      This is for a future wall mount t.v.		
Inv.4655	1 - Relocate the standard ceiling light from the upper stair landing to the O.T.B. area on the second floor...see sketch # 2	
Line 59640	Note:	
27May20 / 23Nov20		

HARDWOOD

HEATING AND AIR CONDITIONING

MISCELLANEOUS

Inv.4655	1 - To supply & instal the coffered ceiling in the dining room as per plan.. see sketch # 1	
Line 59633	Note:	
27May20 / 23Nov20		

PLUMBING

Inv.4655	1 - To supply & install a WATERLINE ROUGH-IN TO THE FRIDGE LOCATION (NO HOOK UP) in the kitchen.	
Line 59634	Note:	
27May20 / 23Nov20		



CONSTRUCTION SUMMARY

Kingsmen (Thames) Inc. / Havelock Corners (Kingsmen)

Lot/Unit: 8    Phase/Building: 4A    Model/Floor Plan: Spencer (4204) Elev B 4 Bed - 4+1 Bath

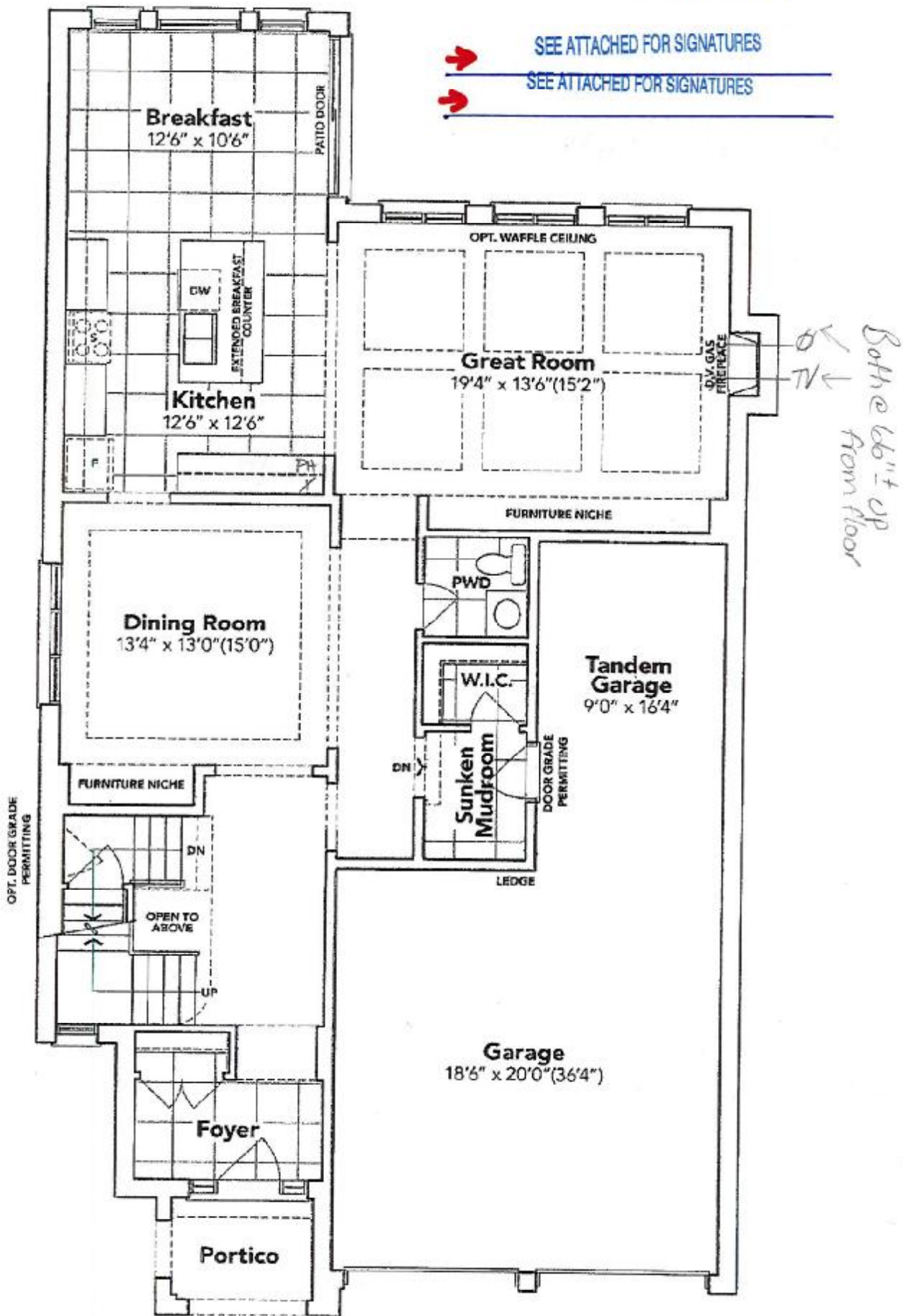
EXTRAS AS PER OFFER

VENDOR TO INSTALL CAPPED GAS LINE (ROUGH-IN ONLY) AT REAR OF HOME FOR FUTURE BBQ LOCATION. LOCATION TO BE FINALIZED AT VENDORS SOLE DISCRETION. <i>Worksheet</i> Note:	
VENDOR TO INSTALL GAS LINE (ROUGH-IN ONLY) TO KITCHEN IN AT STOVE LOCATION (AS PER PLAN) TO INCLUDE 110V CODE REQUIREMENT. <i>Worksheet</i> Note:	
VENDOR TO SUPPLY & INSTALL AIR CONDITIONING UNIT, SIZED ACCORDINGLY, FROM VENDORS STANDARD SAMPLES. <i>Worksheet</i> Note:	
VENDOR TO INCLUDE ENGINEERED HARDWOOD THROUGHOUT THE 2ND FLOOR IN LIEU OF INCLUDED CARPET, AS PER PLAN, AND SELECTIONS AS OUTLINED IN SCHEDULE A. THIS HAS NO CASH VALUE <i>Worksheet</i> Note:	

SCHEDULE "B-1"  
Floor Plan

Lot 8  
Phase 4A  
Model: Spencer (4204) Elev B 4 Bed - 4+1 Bath  
Standard

Sketch #1



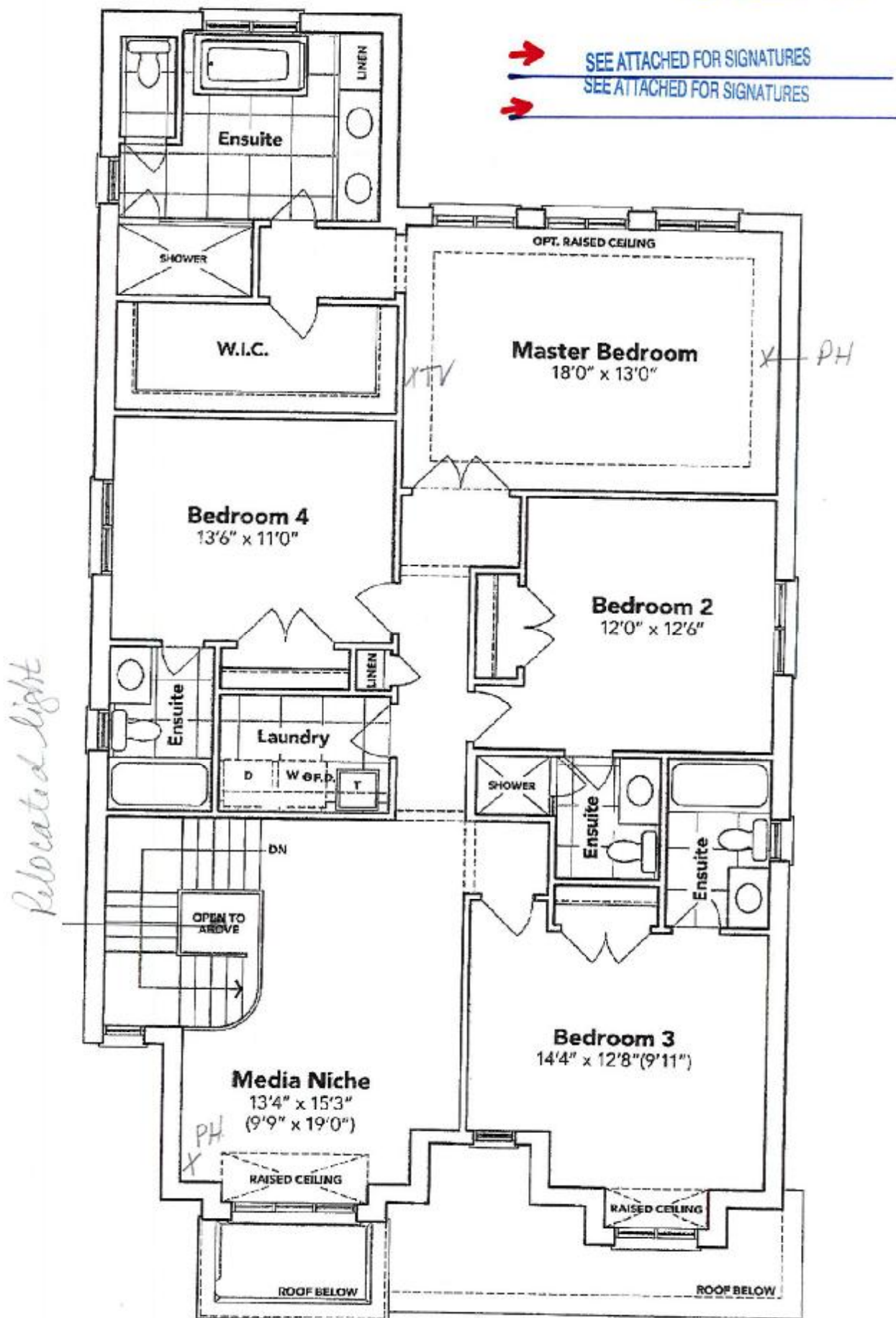
GROUND FLOOR EL. B

The floor plans and elevations shown are pre-construction plans and may be revised or improved as necessitated by architectural controls and the construction process. The measurements adhere to the rules and regulations of the TARION Warranty Corporation's official method for the calculation of floor area. Materials, specifications and floor plans are subject to change without notice. All house renderings are artist's concept only. Actual usable floor space may vary from the stated floor area. All options shown are upgrades. E. & O. E.

**SCHEDULE "B-1"**  
**Floor Plan**

Lot 8  
 Phase 4A  
 Model: Spencer (4204) Elev B 4 Bed - 4+1 Bath  
 Standard

*Sketch #2*



**SECOND FLOOR EL. B**

The floor plans and elevations shown are pre-construction plans and may be revised or improved as necessitated by architectural controls and the construction process. The measurements adhere to the rules and regulations of the TARIION Warranty Corporation's official method for the calculation of floor area. Materials, specifications and floor plans are subject to change without notice. All house renderings are artist's concept only. Actual usable floor space may vary from the stated floor area. All options shown are upgrades. E. & O. E.

SCHEDULE "B-1" - Page 2 of 3



Lot: 8 Thames PH: 4A  
Re: Fridge Specs



SEE ATTACHED FOR SIGNATURES

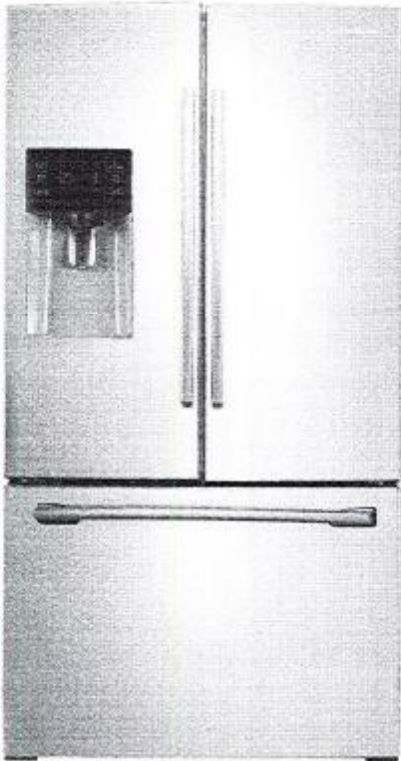


SEE ATTACHED FOR SIGNATURES

## RF263BEAESR

**SAMSUNG**

Samsung 25 cu. ft. Capacity French Door Refrigerator  
with External Water and Ice Dispenser



### Signature Features

#### Ice Master Ice Maker

- Produces 10 lbs. of ice per day and stores 4.2 lbs.
- Space-saving design leaves more room in the refrigerator.

#### CoolSelect Pantry™

- Provides additional temperature control for your food storage needs with Quick Cool, Thaw and Soft Freeze, Chill Mode, and Cool Mode options.

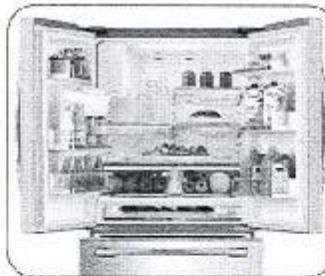
#### Twin Cooling Plus®

- Refrigerator air is kept at higher, near-commercial-grade humidity levels to keep perishable fruits and vegetables fresher longer.
- Drier freezer air means less freezer burn for better-tasting frozen foods.

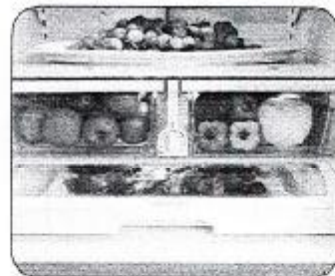
#### High-Efficiency LED Lighting

- High-efficiency design beautifully lights up the interior so you're able to quickly spot what you want.
- Sleek design saves more space than traditional incandescent light bulbs.

### Available Colors



Ice Master Ice Maker



CoolSelect Pantry™

### Features

- Large Storage Capacity – 25 cu. ft. Capacity
- Ice Master Ice Maker in the Refrigerator
- High-Efficiency LED Lighting
- Twin Cooling Plus®
- ENERGY STAR®-Compliant
- Tall and Wide External Filtered Water and Ice Dispenser
- CoolSelect Pantry™ with Temperature Control
- Power Freeze and Power Cool Options
- Two Humidity-Controlled Crispers
- Tempered Glass Spill-Proof Shelves

- Gallon Door Bins
- EZ-Open Handle™ on Freezer Door
- Auto Pull-Out Upper Freezer Drawer

### Convenience

- CoolTight Door
- Door Alarm
- Removable Ice Caddy

### Rating



ENERGY STAR®-rated:  
CEE Tier 2  
637 kWh/yr

Lot: 8 Thomas PH: 4A  
Re: FRIDGE SPEC'S CON'T

→ SEE ATTACHED FOR SIGNATURES

→ SEE ATTACHED FOR SIGNATURES

## RF263BEAESR

**SAMSUNG**

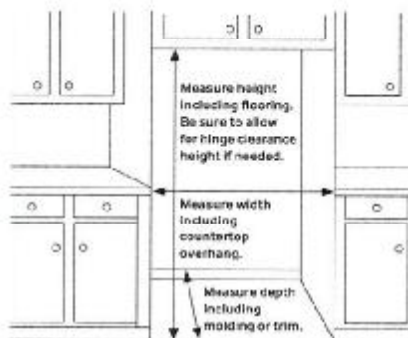
Samsung 25 cu. ft. Capacity French Door Refrigerator  
with External Water and Ice Dispenser

### Installation Specifications

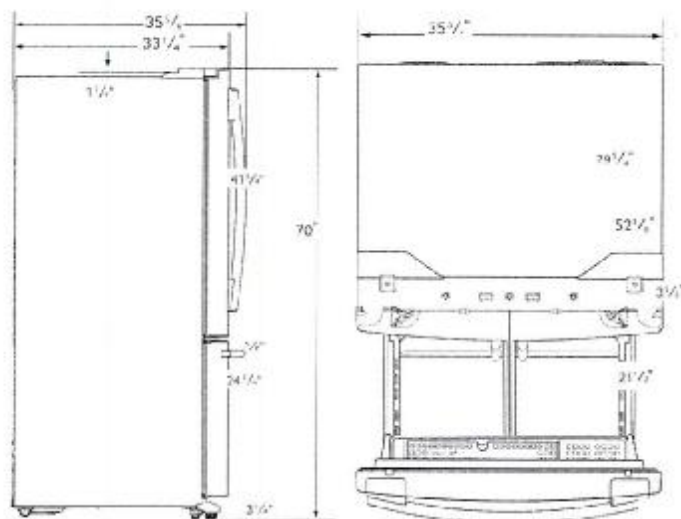
1. Measure the height, width and depth of the opening, making sure to include baseboards, molding, tile, countertop overhang, etc. Check to be sure there is enough room to open the door (consider walls, islands or other obstacles when measuring).
2. Refer to illustration below to determine dimensions.
3. Allow 2.5" of clearance on hinge side of refrigerator when installing next to a wall where handle may make contact.
4. Allow 1" minimum clearance at rear for proper air circulation and water/electrical connections. Allow a 5/8" minimum clearance at sides and top for ease of installation.
5. Ensure each door and entryway in the home is wide enough for the refrigerator to be moved through easily.

For optimal usage and to be able to open refrigerator doors completely, do not install next to a wall.

Please note: The following dimension and cutout information is for planning purposes only. For complete installation details, consult manual packed with product, or download manual online at [samsung.com](http://samsung.com).



### Dimensions



Total Capacity: 24.6 cu. ft.

**Refrigerator: 16.6 cu. ft.**

- Tall and Wide External Filtered Water and Ice Dispenser
- Ice Master Ice Maker
- CoolSelect Pantry™ with Temperature Control
- 2 Humidity-Controlled Crispers
  - 2 Slide-Out
  - 1 Slide-In
  - 1 Extending Half Shelf
  - 1 Full Width
- 6 Clear Door Bins
  - Right Door: 3 Gallon Bins
  - Left Door: 3 Door Bins
- High-Efficiency LED Lighting

**Freezer: 8.0 cu. ft.**

- EZ-Open Handle™
- 1 Large Opaque Bin with 2 Dividers
- Auto Pull-Out Upper Drawer
- High-Efficiency LED Lighting

### Warranty

One (1) Year Parts and Labor on Refrigerator  
Five (5) Years Parts and Labor on Sealed Refrigeration System Only\*  
Ten (10) Years Parts and Five (5) Years Labor on Digital Inverter Compressor

\*Compressor, evaporator, condenser, drier and connecting tubing.

### Product Dimensions & Weight

Dimensions (WxHxD with hinges, handles and doors):  
35 3/4" x 70" x 35 5/8"

Dimensions (WxHxD without hinges and door):  
35 3/4" x 68 5/8" x 29 1/4"

Dimensions (WxHxD with hinge and door, no handle):  
35 3/4" x 70" x 33 1/4"

Weight: 307.5 lbs.

### Shipping Dimensions & Weight (WxHxD)

Dimensions: 38 5/8" x 75 5/8" x 36 1/4"

Weight: 334.0 lbs.

Color	Model #	UPC Code
Stainless Steel	RF263BEAESR	036725590045
Fingerprint Resistant		
Black Stainless Steel	RF263BEAESG	887276117782
White	RF263BEAEWW	036725590076

Actual color may vary. Design, specifications, and color availability are subject to change without notice. Net-weight weights and measurements are approximate.

©2018 Samsung Electronics America, Inc. 85 Challenger Road, Ridgefield Park, NJ 07660. Tel: 800-SAMSUNG. [samsung.com](http://samsung.com). Samsung is a registered trademark of Samsung Electronics Co., Ltd.



# NX58M3310SS/SW

Samsung Freestanding Gas Range  
5.8 cu. ft. Capacity

**SAMSUNG**

Lot: 8 Thames PH:4A  
Re: Gas Stove SPEC'S (30")  
SEE ATTACHED FOR SIGNATURES



SEE ATTACHED FOR SIGNATURES



## Signature Features

### Powerful Cooktop

- Five-burner cooktop provides the power to quickly boil water and flexibility to cook multiple dishes simultaneously
- Five burners totaling 53K BTU, with powerful 17K burner, provides power to boil water faster.

### 5.8 cu. ft. Capacity

- 5.8 cu. ft. large capacity oven allows you to cook multiple dishes at once or accommodate larger items.
- The large interior can easily accommodate a big roast, multiple casserole dishes or several racks of cookies.

## Available Colours



Stainless Steel (shown)



White



Large Capacity



Powerful Cooktop

## Features

- Powerful Cooktop – 5 Gas Burners
  - Right Front: 17K BTU
  - Left Front: 12K BTU
  - Right Rear: 5K BTU
  - Left Rear: 9.5K BTU
  - Center: 9.5K BTU (Oval)
- Large Oven Capacity – 5.8 cu. ft.
- Wide View Window
- 17K BTU Power Burner
- Hidden Bake Element
- Convenient Storage Drawer
- Sabbath Mode

## Convenience

- Auto Oven Light
- Auto Shut-Off Option
- Delay Start
- Child Safety Lock
- 2 Chrome Oven Racks
- Kitchen Timer
- Manual Clean

# NX58M3310SS/SW

Samsung Freestanding Gas Range

5.8 cu. ft. Capacity

**SAMSUNG**

Lot: 8 Thomas PH-4A  
Re: Gas Stove SPEC'S LOW'T (30")

SEE ATTACHED FOR SIGNATURES

Total Power (BTU)  
53K

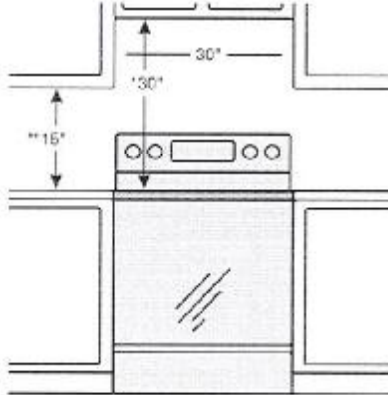
Power Source  
120 V/60 Hz

SEE ATTACHED FOR SIGNATURES

## Installing Your Range

\* 30" minimum clearance between the top of the cooking surface and the bottom of an unprotected wood or metal cabinet; or 24" minimum when the bottom of the wood or metal cabinet is protected by not less than 1/4" flame-retardant millboard covered with not less than no. 28 MSG sheet steel, 0.015" stainless steel, 0.024" aluminum or 0.020" copper.

\*\* 15" minimum between the countertop and the adjacent cabinet bottom.  
IMPORTANT: To eliminate the risk of burns or fire caused by reaching "over heated" surface units, cabinet storage space located above the surface units should be avoided. If cabinet storage is to be provided, the risk can be reduced by installing a range hood that projects horizontally a minimum of 5" beyond the bottom of the cabinets.



### Black Enamel 5-Burner Cooktop (BTU)

- Right Front: 17K
- Left Front: 12K
- Right Rear: 5K
- Left Rear: 9.5K
- Center (Oval): 9.5K

### Oven

- Capacity: 5.8 cu. ft.
- Bake: 175°F - 550°F
- Variable Broil: 375°F - 480°F
- Sabbath Mode

### Storage Drawer

Capacity: 0.7 cu. ft.

### Warranty

One (1) Year All Parts and Labour

### Product Dimensions & Weight (WxHxD)

Actual Oven Dimensions: 25" x 19" x 21 1/8"

Outside Net Dimensions: 29 15/16" x 46 5/8" x 26"

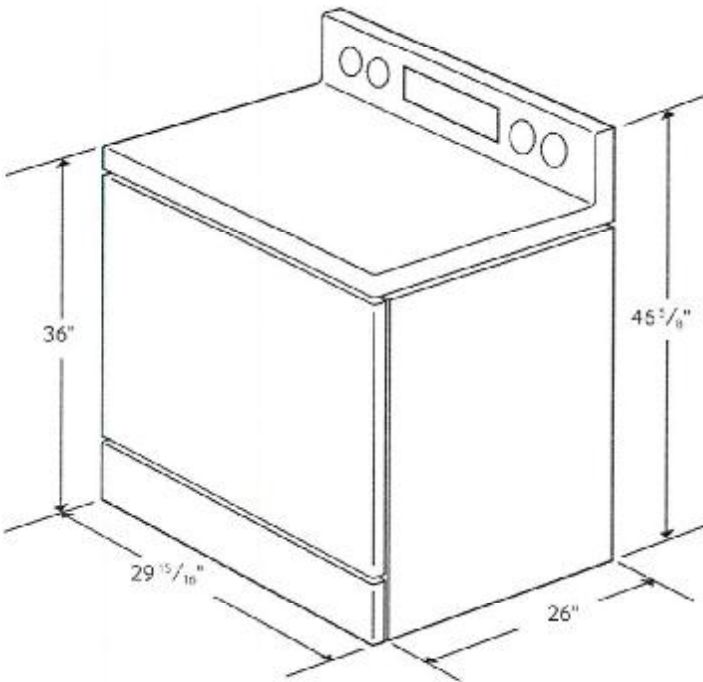
Weight: 170 lbs.

### Shipping Dimensions & Weight (WxHxD)

Dimensions: 33 1/16" x 50 3/8" x 30 5/16"

Weight: 192 lbs.

## Dimensions



### Colour

Stainless Steel  
White

### Model #

NX58K3310SS  
NX58K3310SW

### UPC Code

887276222226  
887276228921

Actual colour may vary. Design specifications and colour availability are subject to change without notice. Non-metric weights and measurements are approximate.  
© 2017 Samsung Electronics Canada Inc. All rights reserved. Samsung is a registered trademark of Samsung Electronics Co., Ltd., used with permission.