

Kingsmen (Thames) Inc. / Havelock Corners (Kingsmen)

Lot/Unit: 74 Phase/Building: 4A Model/Floor Plan: Spencer (4204) Elev B 4 Bed - 4+1 Bath

Miscellaneous

Cabinetry

CABINETRY APPLIANCE - FRIDGE

Inv.4608	1 - To supply & install the 66CM DEEP FRIDGE ENCLOSURE - COUNTER DEPTH WITH - 1 WALL - 1 66CM DEEP GABLE AND 1 66CM DEEP CABINET - THIS IS NOT A ZERO CLEARANCE ENCLOSURE. STANDARD HEIGHTS AND WIDTHS WILL BE USED. - CLASSIC SERIES in the kitchen...	
Line 61035	Note: See sketch # 3 SEE FRIDGE SPEC'S, THEY WERE PROVIDED DURING THE STRUCTURAL APPOINTMENT DATED MARCH 26, 2020	
20Apr20 / 28Sep20		

CABINETRY MICROWAVE OVEN STOVE COOKTOP

Inv.4608	1 - To supply & install for a 30" COOKTOP CABINET WITH FALSE TOP DRAWER AND POTS AND PANS DRAWERS BELOW - SUPPLY SPECS CLASSIC SERIES... see specs...see sketch # 3	
Line 61096	Note:	
20Apr20 / 28Sep20		
Inv.4608	1 - To supply & install for a BUILT-IN TALL(for a future built in wall oven and microwave APPLIANCE CABINET WITH DRAWER... SUPPLY ALL SPECS AND INSTALLATION GUIDES - COUNTER DEPTH - CLASSIC SERIES See sketch # 3	
Line 61097	Note:	
20Apr20 / 28Sep20		

CABINETRY VANITY

Inv.4608	1 - To supply & install the VANITY BANK OF DRAWERS - MAX. WIDTH 55CM - CLASSIC SERIES in the master ensuite... see sketch # 4	
Line 61037	Note:	
20Apr20 / 28Sep20		

COUNTER TOP

Inv.4608	1 - To supply & install accomadtions to the he quartz countertop for the 30" cook top in the kitchen... see spec's	
Line 61100	Note:	
20Apr20 / 28Sep20		

ELECTRICAL

Inv.4608	1 - To SUPPLY AND INSTALL EXTRA 240 STOVE PLUG at the built in wall oven/micro combination.	
Line 61098	Note:	
20Apr20 / 28Sep20		

Heating And Air Conditioning

MISCELLANEOUS

Kingsmen (Thames) Inc. / Havelock Corners (Kingsmen)

Lot/Unit: 74 Phase/Building: 4A Model/Floor Plan: Spencer (4204) Elev B 4 Bed - 4+1 Bath

EXTRAS AS PER OFFER

SCHEDULE "B-1" Floor Plan

SEP 29 2020

Lot 74

Phase 4A

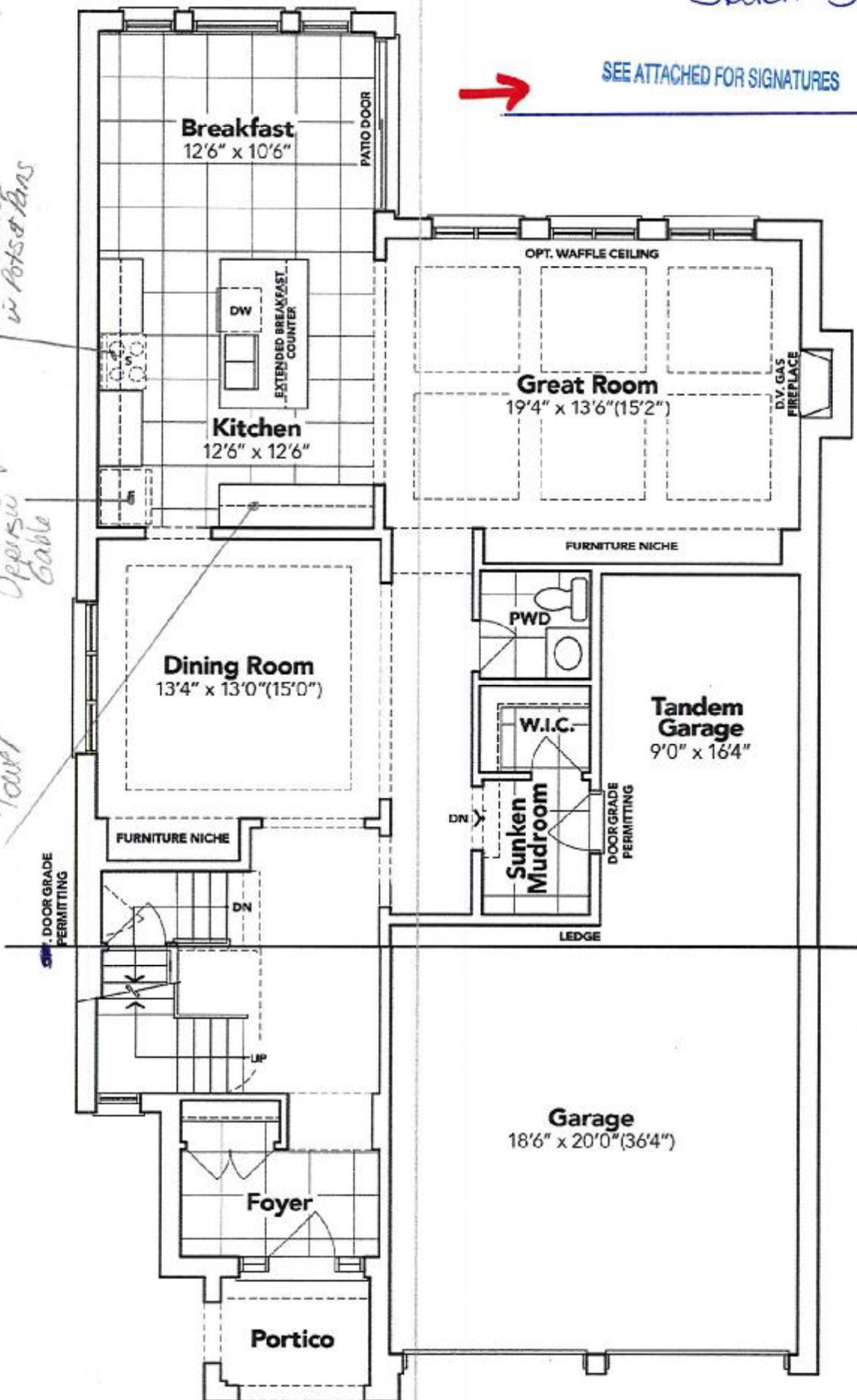
Model: Spencer (4204) Elev B 4 Bed - 4+1 Bath

Standard

Sketch #3

4A-74

SEE ATTACHED FOR SIGNATURES



PART. GROUND FLOOR EL. B

The floor plans and elevations shown are pre-construction plans and may be revised or improved as necessitated by architectural controls and the construction process. The measurements adhere to the rules and regulations of the TARIION Warranty Corporation's official method for the calculation of floor area. Materials, specifications and floor plans are subject to change without notice. All house renderings are artist's concept only. Actual usable floor space may vary from the stated floor area. All options shown are upgrades. E. & O. E.

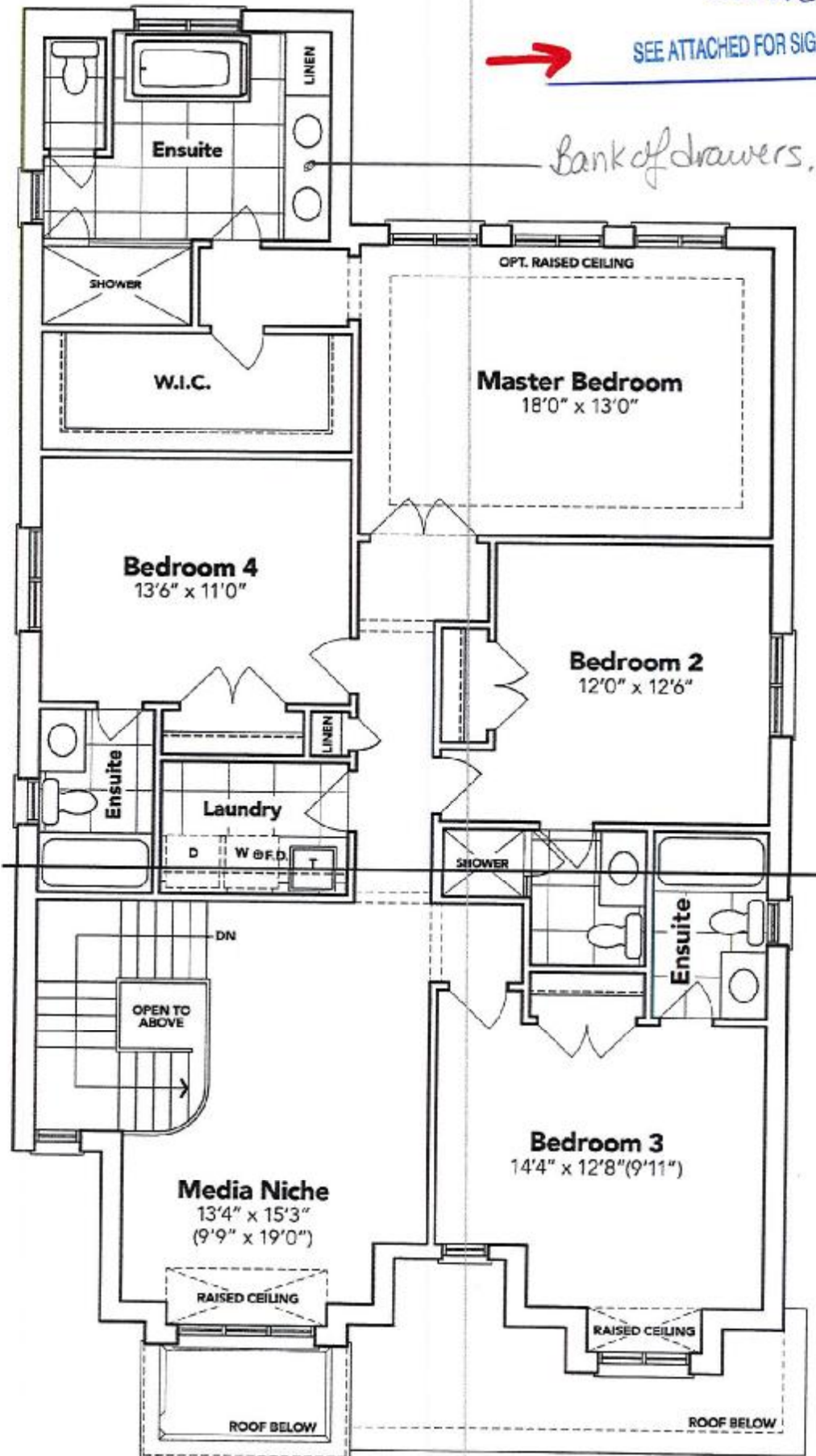
SCHEDULE "B-1"
Floor Plan

SEP 29 2020

Lot 74
Phase 4A
Model: Spencer (4204) Elev B 4 Bed - 4+1 Bath
Standard

Sketch #4 4A-74

SEE ATTACHED FOR SIGNATURES



PART. SECOND FLOOR EL. B

The floor plans and elevations shown are pre-construction plans and may be revised or improved as necessitated by architectural controls and the construction process. The measurements adhere to the rules and regulations of the TARION Warranty Corporation's official method for the calculation of floor area. Materials, specifications and floor plans are subject to change without notice. All house renderings are artist's concept only. Actual usable floor space may vary from the stated floor area. All options shown are upgrades. E. & O. E.

SCHEDULE "B-1" - Page 3 of 3

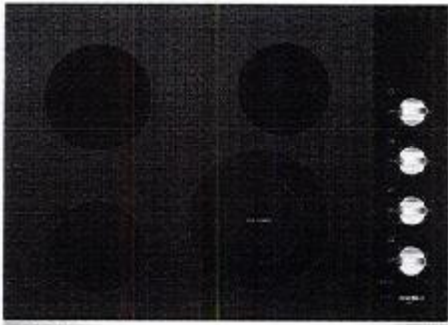


Lot: 74 Thomas PH: 4A
Re: 30" CookTop Spec's

SEE ATTACHED FOR SIGNATURES

Whirlpool® 30" Electric Ceramic Glass Cooktop

WCE55US0H



Stainless Steel
WCE55US0HS

General Features & Properties

- Dishwasher-Safe Knobs
- Hot Surface Indicator Light
- Wall Oven Compatible
- 8" Extra Element
- 6" Extra Element
- ADA compliant

Electrical Details

Amps	30
Volts	240

Certifications

ADA Compliant	Yes
---------------	-----

Technical Details

Fuel Type	Electric
Number of Burners/Elements	4
Burner/Element Power	(1) 1200W (1) 1800W (1) 2500W/1800W (1) 1200W
Burner/Element Type/Size	(2) 6" Standard (1) 8" Standard (1) 10 7/8" Dual

Dimensions

Product Dimensions (H x W x D)	5-1/4" x 30-13/16" x 22-7/8"
Cutout Dimensions (W x D)	29-9/16" x 20-9/16"

Reference Material

- [Install Guide](#)
- [Use & Care Guide](#)
- [Warranty](#)

Also available in:

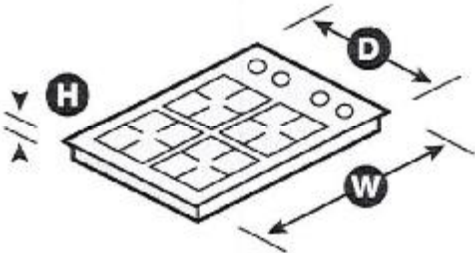
- White WCE55US0HW
- Black WCE55US0HB

Key Features & Benefits

FlexHeat™ Dual Radiant Element
Get two elements in one with a 6" inner ring that's great for smaller pots and pans and a 10" expandable outer ring that makes room for larger cookware.

Easy-Wipe Ceramic Glass Cooktop
Wiping up spills is simple with the easy-to-clean cooktop.

30 & 40 Amp Installation
Properly install with either a 30 or 40 amp hookup, so there's no need to rewire.



NOTE: Dimensions are for planning purposes only. For complete details, see Installation Instructions packed with product. Specifications subject to change without notice.

©/TM © 2020. All rights reserved. Printed in the U.S.A. D200104XXE. WCE55US0HSpecSheetV01.

SEP 29 2020

4A-74

LOT: 74 Thames PH: 4A

Re: Built'n Wall Oven / Micro. Spec's



→ SEE ATTACHED FOR SIGNATURES

WHIRLPOOL 6.4 CU. FT. SMART COMBINATION WALL OVEN - WOC54ECOHS

\$ 3,099.00

SKU: WOC54OHS

VSN: WOC54ECOHS

Dimensions

Width: 30" (76.2 cm) Height: 42.56" (108.1 cm) Depth: 26.50" (67.3 cm)

Possess the power and flexibility of this 6.4-cubic-foot Whirlpool combination wall oven with a built-in microwave, without compromising on aesthetics or practicality. With a touchscreen that learns and adapts to your routines to give you the perfect temperature settings every time and Frozen Bake™ technology that lets you skip preheating, you can get meals from the oven to the table in less time. Installed at eye-level to make preparing meals even easier, this wall oven also features smart capabilities so you can pair it with any smart device for added convenience and extra control.



Unique Features

Lot: 74 Thomas PH: 4A
Re: Built-in Wall oven / Micro Spec's Con't

Smart Appliance:

Care smart with connected features that let you send cooking instructions to the oven from your smart device.

Touchscreen:

SEE ATTACHED FOR SIGNATURES

Get instant access to the settings you use most with a touchscreen that learns, adapts and suggests customized pre-sets based on your family's routines.

Frozen Bake™ Technology:

Skip preheating with Frozen Bake™ technology. Cook frozen food with preprogrammed settings that automatically adjust cooking times so you can get items like frozen pizza or lasagna cooked in a hurry.

Multi-Step Cooking:

Use your smartphone or tablet to send multiple cooking instructions to the oven all at once. The temperature automatically adjusts based on the recipe you enter for great results without having to monitor your meal.

Steam Clean Option:

Clean up after day-to-day light spills using only heat and water—no harsh chemicals or cleaners needed. This keeps the oven clean and reduces the need for frequent self-clean cycles.

Scan-to-Connect Technology:

You don't need to be a tech expert to connect your new appliance. Simply open the Whirlpool app, add your appliance and follow the guide to get up and running quickly.

Keep Warm Setting:

Keep dishes from getting cold with this setting that delivers low heat to the oven. Control it remotely through your Whirlpool app or manually on the oven.

Party Mode:

Prepare for guests from your smartphone or tablet. This mode automatically turns on the Keep Warm setting so dishes stay hot and ready to serve.

Enhanced Troubleshooting and Guided Service:

Get immediate support for quick solutions by using your smartphone or tablet to access troubleshooting videos, and send data from the appliance directly to Whirlpool brand customer service via the Whirlpool app.

Sabbath Mode:

Use your smartphone or tablet to remotely set the oven to remain on the "Bake" setting at a constant. When this mode is enabled, displays, tones and all other cooking and cleaning cycles are disabled.

Rapid Preheat:

Save time with 20% faster preheating. A rear fan combined with the use of all of the elements helps to heat the oven quickly.

General Details

VSN	WOC54EC0HS
UPC/GTIN	883049444901
Appliance Features	Child Lock, Steam, Smart Capable

General Details

Lot: 74 Thomas PH: 4A

SEP 29 2020

Cooking Features	Built-In Thermometer, Self-Clean, Sabbath Mode
Fuel Type	Electric
Finish Colour	Stainless Steel
Control Panel	Touchscreen, Keypad
Energy Consumption	240 V
Handle Type	Stainless Steel Towel Bar

Re: Built'n wall oven/micro Spec's Cont

SEE ATTACHED FOR SIGNATURES

Oven Details

Oven Modes	Steam Clean, Keep Warm, Party Mode, Rapid Preheat, Control Lock Mode, Sabbath Mode
Baking Elements	2,800W
Broiler Element	Top of Oven
Lighting	<ul style="list-style-type: none">Oven Light Type: IncandescentMicrowave Light Type: Halogen
Door	Removable, Drop down

Installation Details

Installation Requirements	https://api.whirlpoolcentral.ca/_resources/documents/WOC54EC0HS_installation_instructio
Instruction Manual URL	Instruction Manual (https://api.whirlpoolcentral.ca/_resources/documents/WOC54EC0HS_use_and_care_en.pdf)

Additional Details

Technology Features	Smart Capable, Wi-Fi
Safety Details	See Owner's Guide
Additional Information	Flush Installation Approved
Certification(s)	Star K Compliant

Additional Dimensions

Oven Capacity (cu. ft.)	5
-------------------------	---

4A-14

General Details

SEP 29 2020

Depth with
Door Open 90
degrees (in.)

46.75

Lot: 74 Thames PH: 4A
Re: Built'n wall Oven/Micro. Appliance
Con't

Cutout
Dimensions
(WxHxD) (in.)

28.5 x 41.3125 x 24

SEE ATTACHED FOR SIGNATURES

