

Kingsmen (Thames) Inc. / Havelock Corners (Kingsmen)

Lot/Unit: 85 Phase/Building: 4A Model/Floor Plan: Louis (4203) Elev A 4 Bed - 4+1 Bath

ELECTRICAL

Inv.4641	1 - To supply & install the standard T.V. rough in in the great room and master bedroom.. see sketch # 1 & # 2	
Line 59456	Note:	
13May20 / 22May20		
Inv.4641	1 - To supply & install the standard Phone rough in in the great room, master bedroom and bedroom # 4...see sketch #1 & # 2	
Line 59457	Note:	
13May20 / 22May20		
Inv.4641	1 - To SUPPLY AND INSTALL AN ADDITIONAL BASIC RECEPTACLE (NOT DEDICATED) at approx. 66 " + - up from the floor centered + - to the F/P mantle	
Line 59458	Note: in the great room... see sketch # 1	
13May20 / 22May20 This is for a future wall mount t.v.		
Inv.4641	1 - To SUPPLY AND INSTALL EXTRA CEILING BOX ROUGH IN CAPPED (DOES NOT INCLUDE SWITCH) over the breakfast bar in the kitchen... see sketch # 1	
Line 59460	Note: This capped ceiling elec. will be connected to a sep. switch, switch sold sep.	
13May20 / 22May20		
Inv.4641	1 - To supply & install AN ADDITIONAL SINGLE POLE SWITCH connected to the upgraded ceiling capped elec. over the breakfast bar in the kitchen.	
Line 59461	Note:	
13May20 / 22May20		
Inv.4641	1 - Relocate the std. ceiling light from the upper stair landing to the O.T.B. area on the 2nd floor... see sketch # 2	
Line 59462	Note:	
13May20 / 22May20		

HEATING AND AIR CONDITIONING

Inv.4641	1 - To supply & install a Humidifier to the furnace...	
Line 59452	Note:	
13May20 / 22May20		

PLUMBING

Inv.4641	1 - To supply & install the upgraded MIROLIN " BROOKE" free standing tub in lieu of the standard free standing tub in the master ensuite... see spec's	
Line 59455	Note:	
13May20 / 22May20		

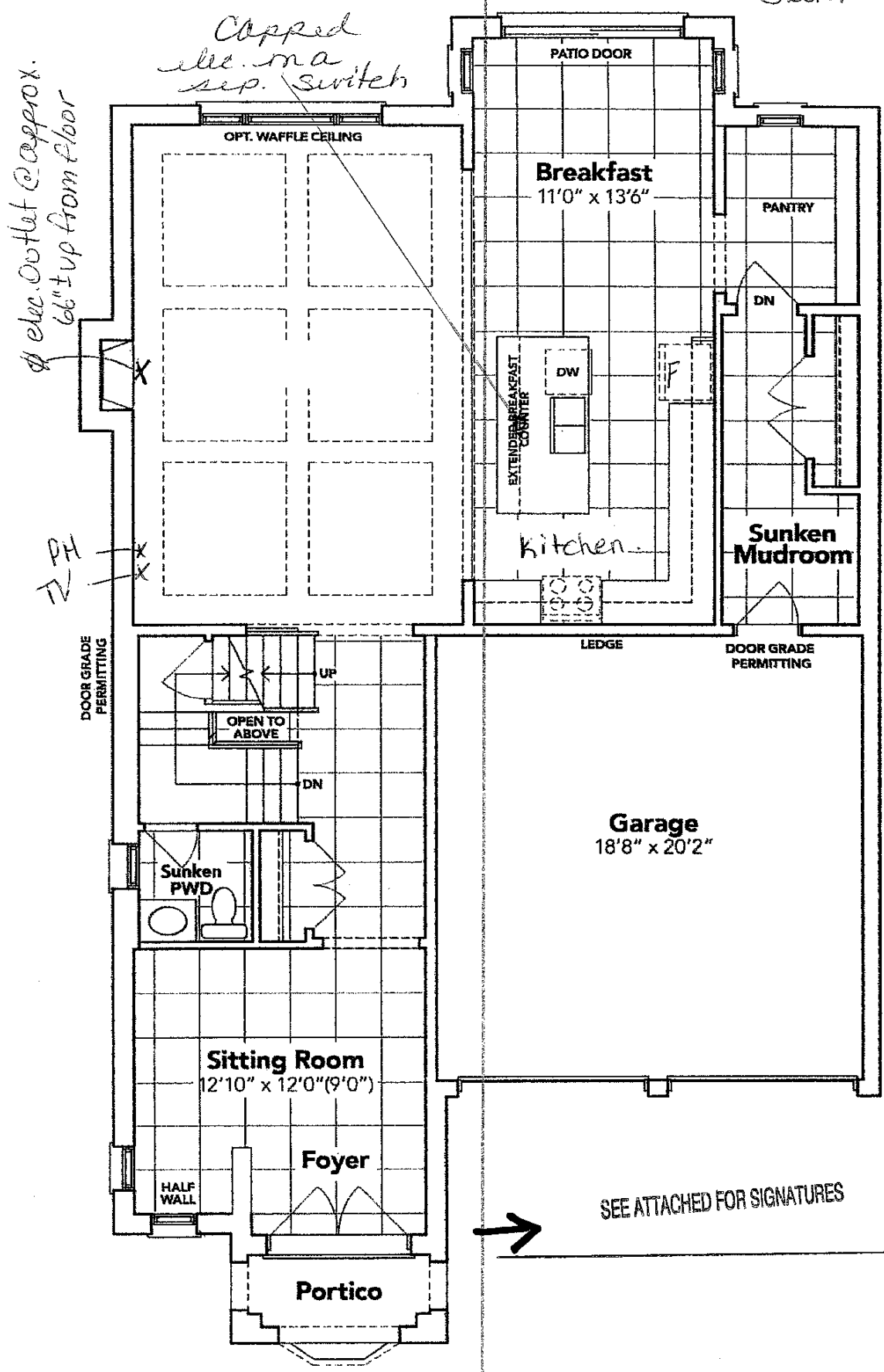
EXTRAS AS PER OFFER

VENDOR TO SUPPLY & INSTALL AIR CONDITIONING UNIT, SIZED ACCORDINGLY, FROM VENDORS STANDARD SAMPLES. <i>Worksheet</i> Note:	
VENDOR TO INSTALL CAPPED GAS LINE (ROUGH-IN ONLY) AT REAR OF HOME FOR FUTURE BBQ LOCATION. LOCATION TO BE FINALIZED AT VENDORS SOLE DISCRETION. <i>Worksheet</i> Note:	

SCHEDULE "B-1"
Floor Plan

Lot 85
Phase 4A
Model: Louis (4203) Elev A 4 Bed - 4+1 Bath
Standard

Sketch #1



GROUND FLOOR EL. A

The floor plans and elevations shown are pre-construction plans and may be revised or improved as necessitated by architectural controls and the construction process. The measurements adhere to the rules and regulations of the TARION Warranty Corporation's official method for the calculation of floor area. Materials, specifications and floor plans are subject to change without notice. All house renderings are artist's concept only. Actual usable floor space may vary from the stated floor area. All options shown are upgrades. . & O. E.

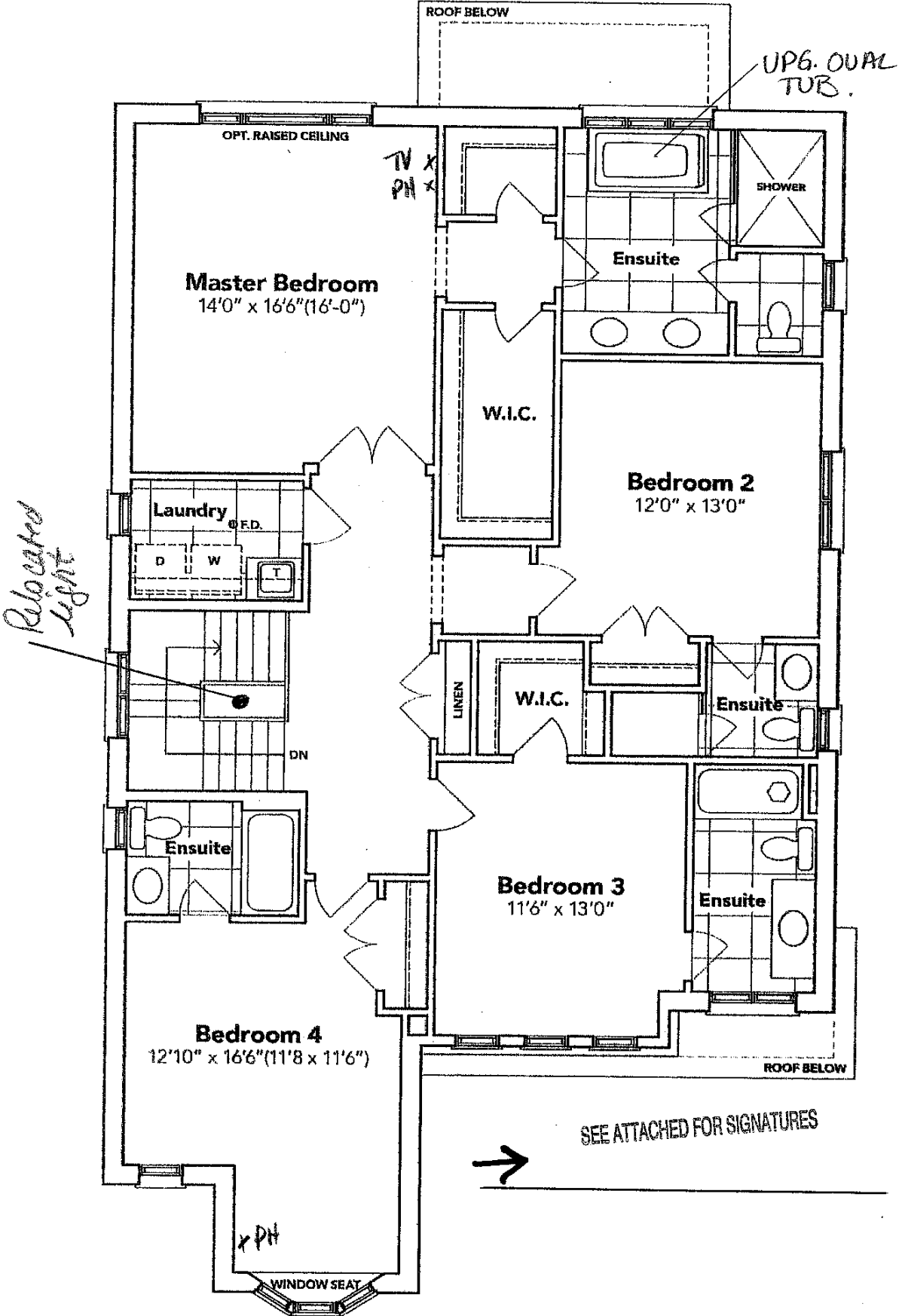
OK

Initials: _____

SCHEDULE "B-1"
Floor Plan

Lot 85
Phase 4A
Model: Louis (4203) Elev A 4 Bed - 4+1 Bath
Standard

Sketch #2



SECOND FLOOR EL. A

The floor plans and elevations shown are pre-construction plans and may be revised or improved as necessitated by architectural controls and the construction process. The measurements adhere to the rules and regulations of the TARION Warranty Corporation's official method for the calculation of floor area. Materials, specifications and floor plans are subject to change without notice. All house renderings are artist's concept only. Actual usable floor space may vary from the stated floor area. All options shown are upgrades. S. & O. E.

LOT: 85 Thames PH: 4A
RE: UPG. FREESTANDING TUB
IN MASTER ENS.



SEE ATTACHED FOR SIGNATURES



Brooke™ | 1

Brooke™

Categories: Acrylic Freestanding

DESCRIPTION

68" Freestanding Bath
SKU #: CF2002

FEATURES

- Installation friendly two piece design
- Accepts deck mounted faucet
- Includes a chrome integral pop up drain and rectangular overflow
- ~~Includes a chrome integral pop up drain and rectangular overflow~~
- Centre drain
- Includes levelling feet
- Available in White Only



DIMENSIONS

68" x 36" x 23"

OPTIONS & ACCESSORIES

SOAKER

CF2002