

Kingsmen (Thames) Inc. / Havelock Corners (Kingsmen)

Lot/Unit: 26    Phase/Building: 4A    Model/Floor Plan: Andrew (3603) Elev A 4 Bed - 2+1 Bath

CABINETRY BASE CABINETS

Inv.4633	1 - To supply & install the BASE PIE CUT CORNER - VIKING SERIES in the kitchen... see sketch # 1	
Line 59216	Note:	
6May20 / 19May20		

CABINETRY MICROWAVE OVEN STOVE COOKTOP

Inv.4633	1 - To supply & install the WALL CABINET WITH SHELF FOR MICROWAVE - FINISHED INTERIOR - OPENING 24INCHESW X 13 3 - 4INCHESH X 17INCHESD - VIKING SERIES in the kitchen... see sketch # 1	
Line 59214	Note: The elec. outlet is sold sep. and is mandatory with this upgrade.	
6May20 / 19May20		

CABINETRY WALL AND HUTCH

Inv.4633	1 - To supply & install the UPPER ANGLE CORNER PER UNIT - VIKING SERIES... see sketch # 1	
Line 59213	Note:	
6May20 / 19May20		

COUNTER TOP

Inv.4633	1 - As per schedule "PE": Vendor to include level 1, 2cm granite or quartz in all bathrooms and level 1, 3cm granite or quartz in kitchen, as per plan, in lieu of the included laminate counter tops. Selections to be made from builders standard samples.	
Line 59200	Note:	
6May20 / 19May20		

ELECTRICAL

Inv.4633	1 - To SUPPLY AND INSTALL MICROWAVE PLUG (DEDICATED CIRCUIT AND INCLUDES ARC FAULT BREAKER) where the upgraded microwave shelf is in the kitchen... see sketch # 1	
Line 59215	Note:	
6May20 / 19May20		
Inv.4633	1 - To supply & install the standard T.V. rough in in the great room and master bedroom... see sketch # 1 & # 2	
Line 59204	Note:	
6May20 / 19May20		
Inv.4633	1 - To supply & install the standard Phone rough in in the kitchen, master bedroom and bedroom # 4... see sketch # 1 & # 2	
Line 59205	Note:	
6May20 / 19May20		
Inv.4633	1 - To SUPPLY AND INSTALL AN ADDITIONAL BASIC RECEPTACLE (NOT DEDICATED) at approx. 66 " + - up from the floor centered to the F/P in the great room....	
Line 59206	Note: See sketch # 1	
6May20 / 19May20                      This is for a future wall mount T.V.		

Kingsmen (Thames) Inc. / Havelock Corners (Kingsmen)

Lot/Unit: 26    Phase/Building: 4A    Model/Floor Plan: Andrew (3603) Elev A 4 Bed - 2+1 Bath

Inv.4633	1 - To SUPPLY AND INSTALL CONDUIT FOR TV OVER THE FIREPLACE – TERMINATED IN SAME ROOM at approx. 66 " + - up from the floor centered + - to the F/P mantle and terminated next to + - the std. T.V. rough in in the great room..see sketch # 1	
Line 59207	Note: This is for a future wall mount T.V.	
6May20 / 19May20		
Inv.4633	1 - To SUPPLY AND INSTALL EXTRA CEILING BOX ROUGH IN CAPPED (DOES NOT INCLUDE SWITCH) over the breakfast bar in the kitchen... see sketch # 1	
Line 59208	Note: This capped ceiling elec. will be connected to a sep. switch, switch is sold sep.	
6May20 / 19May20		
Inv.4633	1 - To supply & install AN ADDITIONAL SINGLE POLE SWITCH connected to the upgraded ceiling capped elec. over the breakfast bar in the kitchen.	
Line 59209	Note:	
6May20 / 19May20		
Inv.4633	1 - Relocate the standard ceiling light from the upper stair landing to the O.T.B. area on the second floor... see sketch # 2	
Line 59210	Note:	
6May20 / 19May20		
Inv.4633	1 - To SUPPLY AND INSTALL EXTRA CEILING BOX ROUGH IN CAPPED (DOES NOT INCLUDE SWITCH) in the master ensuite... see sketch # 2	
Line 59211	Note: This ceiling capped elec. will be connected to a sep. switch, switch is sold sep.	
6May20 / 19May20		
Inv.4633	1 - To supply & install AN ADDITIONAL SINGLE POLE SWITCH connected to the upgraded ceiling capped elec. in the master ensuite...	
Line 59212	Note:	
6May20 / 19May20		

HARDWOOD

HEATING AND AIR CONDITIONING

Inv.4633	1 - To supply & install a Humidifier to the furnace....	
Line 59203	Note:	
6May20 / 19May20		

MISCELLANEOUS

Inv.4633	1 - To supply & install the optional side door... see sketch # 1	
Line 59202	Note:	
6May20 / 19May20		



CONSTRUCTION SUMMARY

Kingsmen (Thames) Inc. / Havelock Corners (Kingsmen)

Lot/Unit: 26    Phase/Building: 4A    Model/Floor Plan: Andrew (3603) Elev A 4 Bed - 2+1 Bath

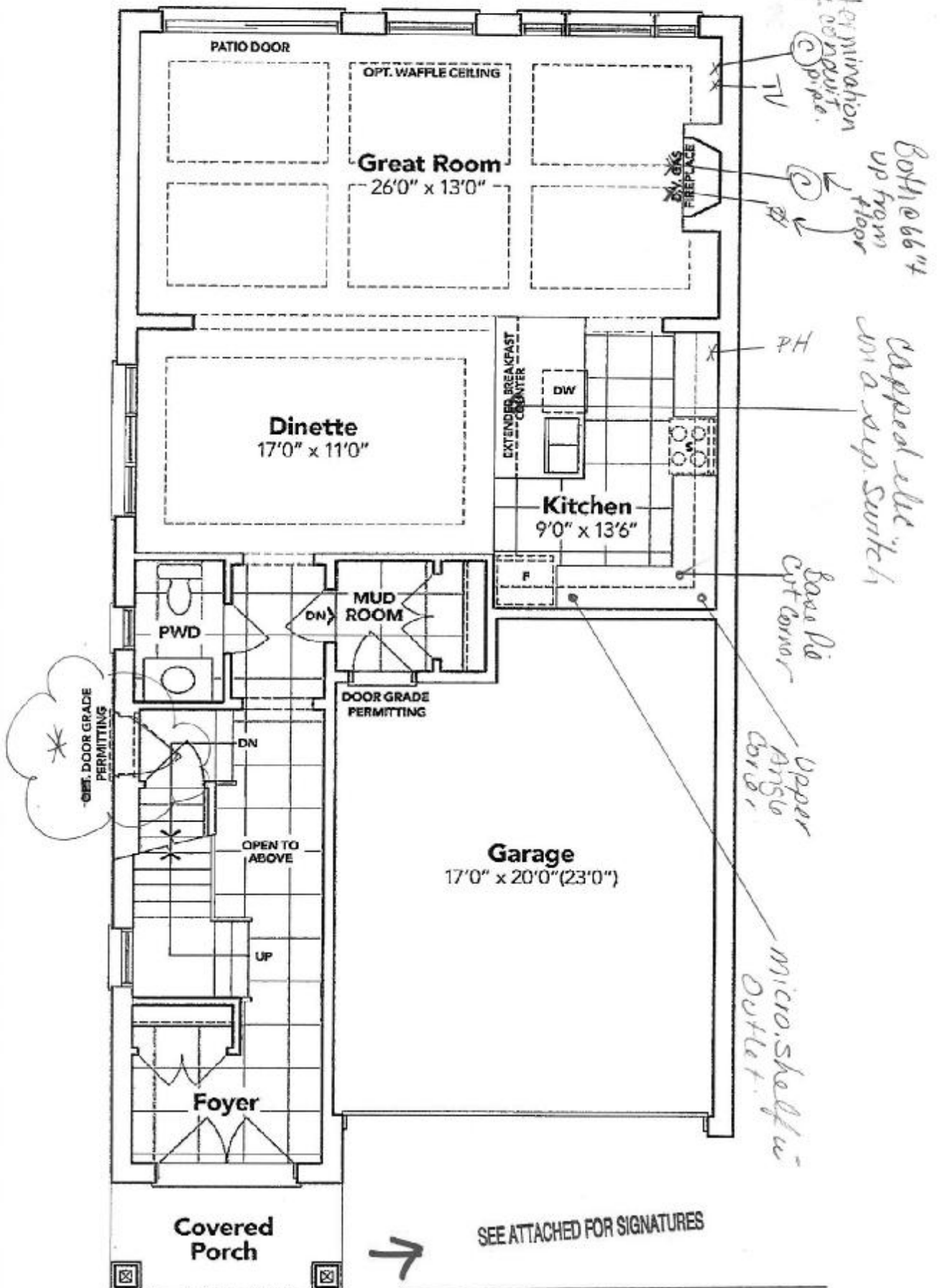
EXTRAS AS PER OFFER

VENDOR TO INSTALL CAPPED GAS LINE (ROUGH-IN ONLY) AT REAR OF HOME FOR FUTURE BBQ LOCATION. LOCATION TO BE FINALIZED AT VENDORS SOLE DISCRETION. <i>Worksheet</i> Note:	
VENDOR TO INSTALL GAS LINE (ROUGH-IN ONLY) TO KITCHEN IN AT STOVE LOCATION (AS PER PLAN) TO INCLUDE 110V CODE REQUIREMENT. <i>Worksheet</i> Note:	
VENDOR TO SUPPLY & INSTALL AIR CONDITIONING UNIT, SIZED ACCORDINGLY, FROM VENDORS STANDARD SAMPLES. <i>Worksheet</i> Note:	
VENDOR TO INCLUDE ENGINEERED HARDWOOD FLOORING THROUGHOUT THE SECOND FLOOR IN LIEU OF INCLUDED CARPET, AS PER PLAN, AND SELECTIONS AS OUTLINED IN SCHEDULE A FOR INCLUDED ENGINEERED HARDWOOD ON THE MAIN FLOOR. THIS HAS NO CASH VALUE.  <i>Worksheet</i> Note:	

**SCHEDULE "B-1"**  
**Floor Plan**

Lot 26  
Phase 4A  
Model: Andrew (3603) Elev A 4 Bed - 2+1 Bath  
Standard

*Sketch #1*



SEE ATTACHED FOR SIGNATURES

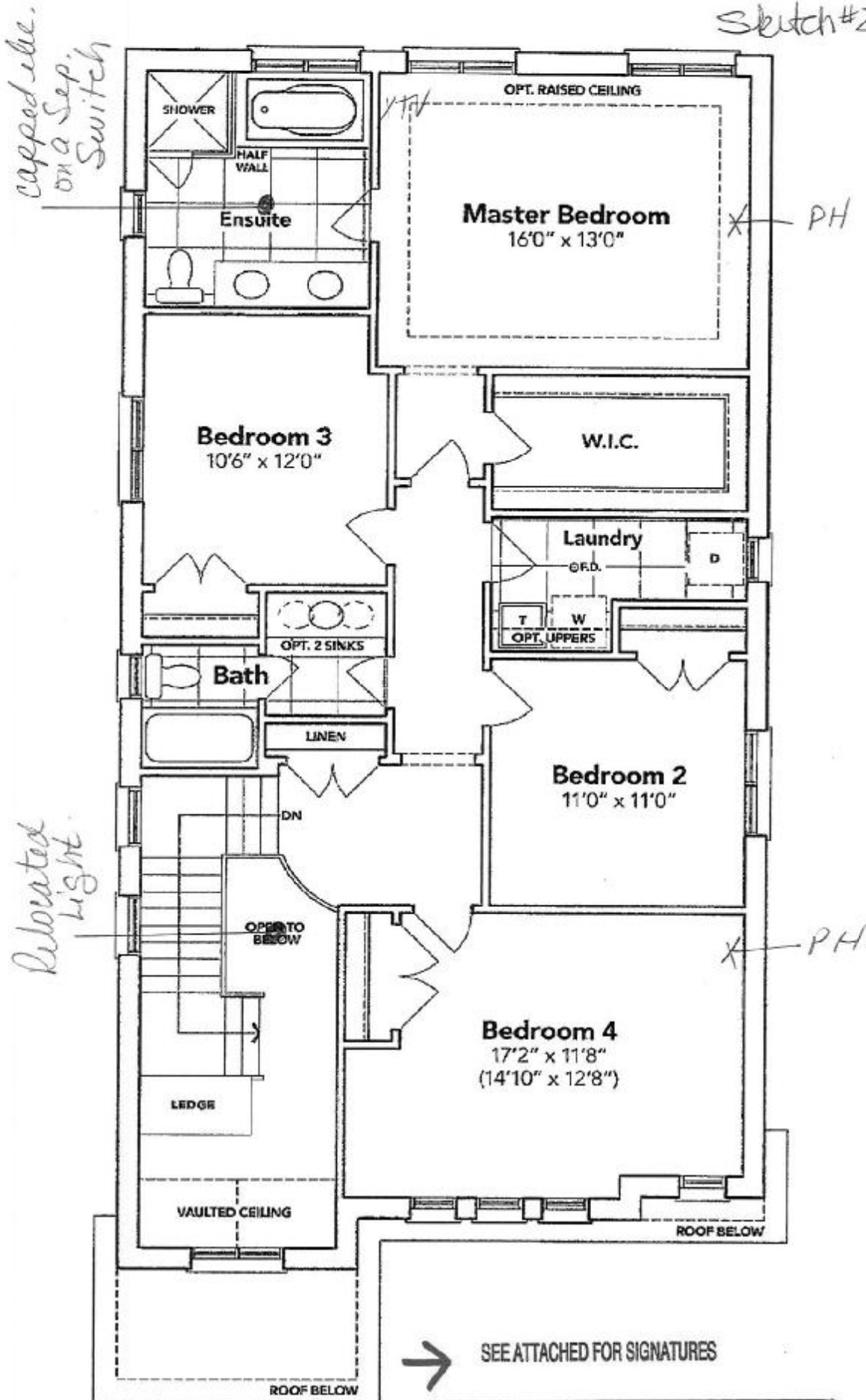
**GROUND FLOOR EL. A**

The floor plans and elevations shown are pre-construction plans and may be revised or improved as necessitated by architectural controls and the construction process. The measurements adhere to the rules and regulations of the TARION Warranty Corporation's official method for the calculation of floor area. Materials, specifications and floor plans are subject to change without notice. All house renderings are artist's concept only. Actual usable floor space may vary from the stated floor area. All options shown are upgrades. E. & O. E.

**SCHEDULE "B-1"**  
**Floor Plan**

Lot 26  
Phase 4A  
Model: Andrew (3603) Elev A 4 Bed - 2+1 Bath  
Standard

Sketch #2



**SECOND FLOOR EL. A**

The floor plans and elevations shown are pre-construction plans and may be revised or improved as necessitated by architectural controls and the construction process. The measurements adhere to the rules and regulations of the TARION Warranty Corporation's official method for the calculation of floor area. Materials, specifications and floor plans are subject to change without notice. All house renderings are artist's concept only. Actual usable floor space may vary from the stated floor area. All options shown are upgrades. E. & O. E.

SCHEDULE "B-1" - Page 2 of 3