



CONSTRUCTION SUMMARY

Kingsmen (Thames) Inc. / Havelock Corners (Kingsmen)

Lot/Unit: 1 Phase/Building: 4A Model/Floor Plan: Spencer (4204) Elev C 4 Bed - 4+1 Bath

CABINETRY

Inv.4661	1 - See attached for fridge specifications...	
Line 59747	Note: No rough in waterline has been purchased.	
4Jun20 / 10Jun20		

ELECTRICAL

Inv.4661	1 - To supply & install the standard T.V. rough in in the great room and master bedroom...see sketch # 1 & # 2	
Line 59715	Note: Install the T.V. rough in at approx. 66 " + - up from the floor centered to the F/P mantle in the great room	
4Jun20 / 10Jun20		
This is for a future wall mount t.v.		
Inv.4661	1 - To supply & install the standard Phone rough in in the kitchen, master bedroom and media room... see sketch # 1 & # 2	
Line 59716	Note:	
4Jun20 / 10Jun20		
Inv.4661	1 - To SUPPLY AND INSTALL AN ADDITIONAL BASIC RECEPTACLE (NOT DEDICATED) at approx. 66" + - up from the floor centered to the F/P mantle	
Line 59717	Note: in the great room... see sketch # 1	
4Jun20 / 10Jun20		
Inv.4661	1 - Relocate the standard ceiling light from the upper stair landing to the O.T.B. area on the second floor.... see sketch # 2	
Line 59718	Note:	
4Jun20 / 10Jun20		

HEATING AND AIR CONDITIONING

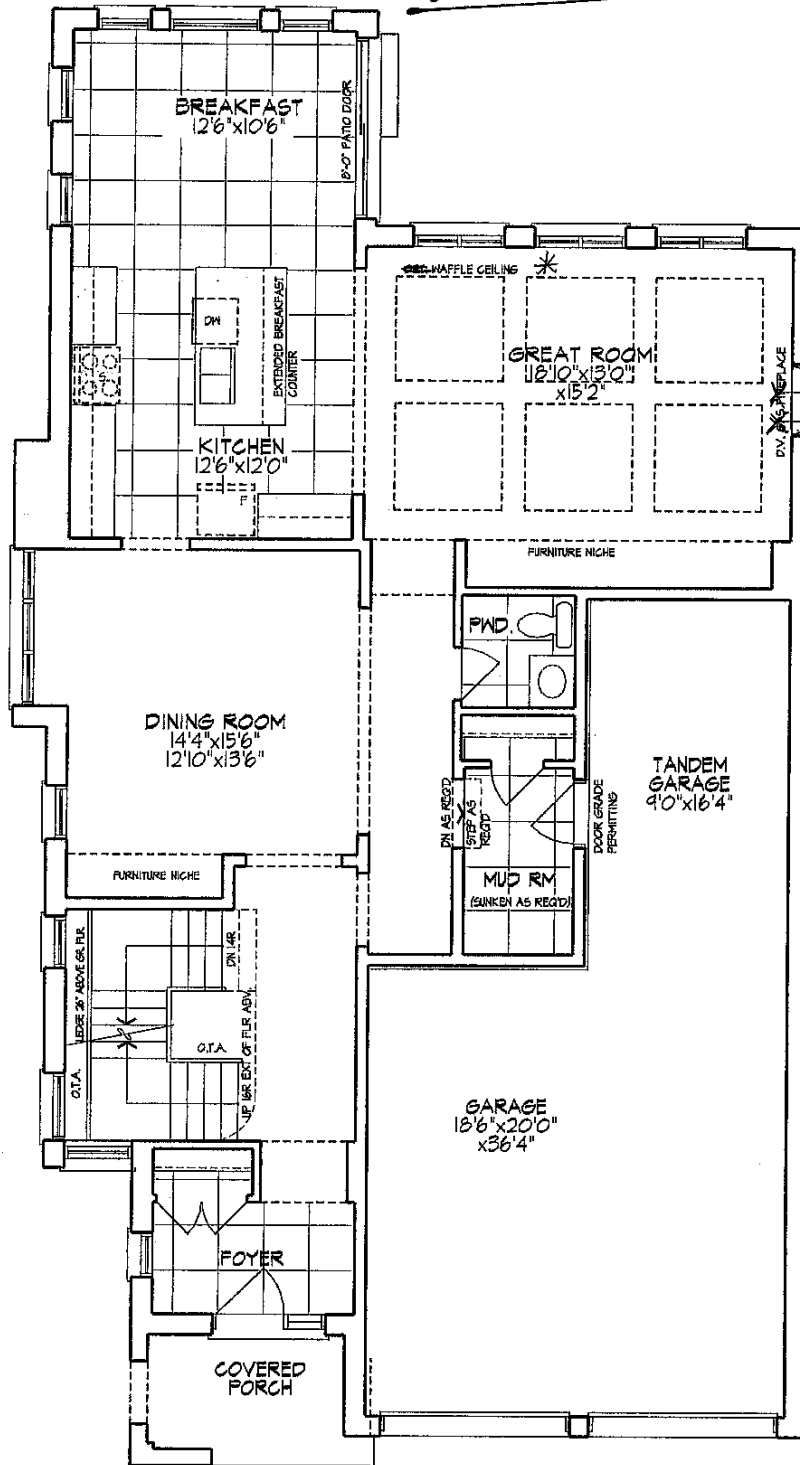
Inv.4661	1 - To supply & install the HUMIDIFIER to the furnace...	
Line 59707	Note:	
4Jun20 / 10Jun20		

EXTRAS AS PER OFFER

VENDOR TO INSTALL CAPPED GAS LINE (ROUGH-IN ONLY) AT REAR OF HOME FOR FUTURE BBQ LOCATION. LOCATION TO BE FINALIZED AT VENDORS SOLE DISCRETION. Worksheet Note:	
VENDOR TO SUPPLY & INSTALL AIR CONDITIONING UNIT, SIZED ACCORDINGLY, FROM VENDORS STANDARD SAMPLES. Worksheet Note:	
Purchaser has selected Spencer Corner Plan Unit 4204-E1.C1 as per schedules included Worksheet Note:	

Lot: 1 Thames PH: 4A
Sketch #1

SEE ATTACHED FOR SIGNATURES
SEE ATTACHED FOR SIGNATURES



GROUND FLOOR PLAN

Lot 1 Phase 4A

Unit 4204 - El. C1
SPENCER - CORNER

3068 sq. ft.

(Finished Basement - 53 sq. ft.)

Materials, specifications, and floor plans are subject to change without notice.
All renderings are artist conceptions. All floor plans are approximate dimensions.
Actual usable floor space may vary from the stated floor area. E. & E.O.

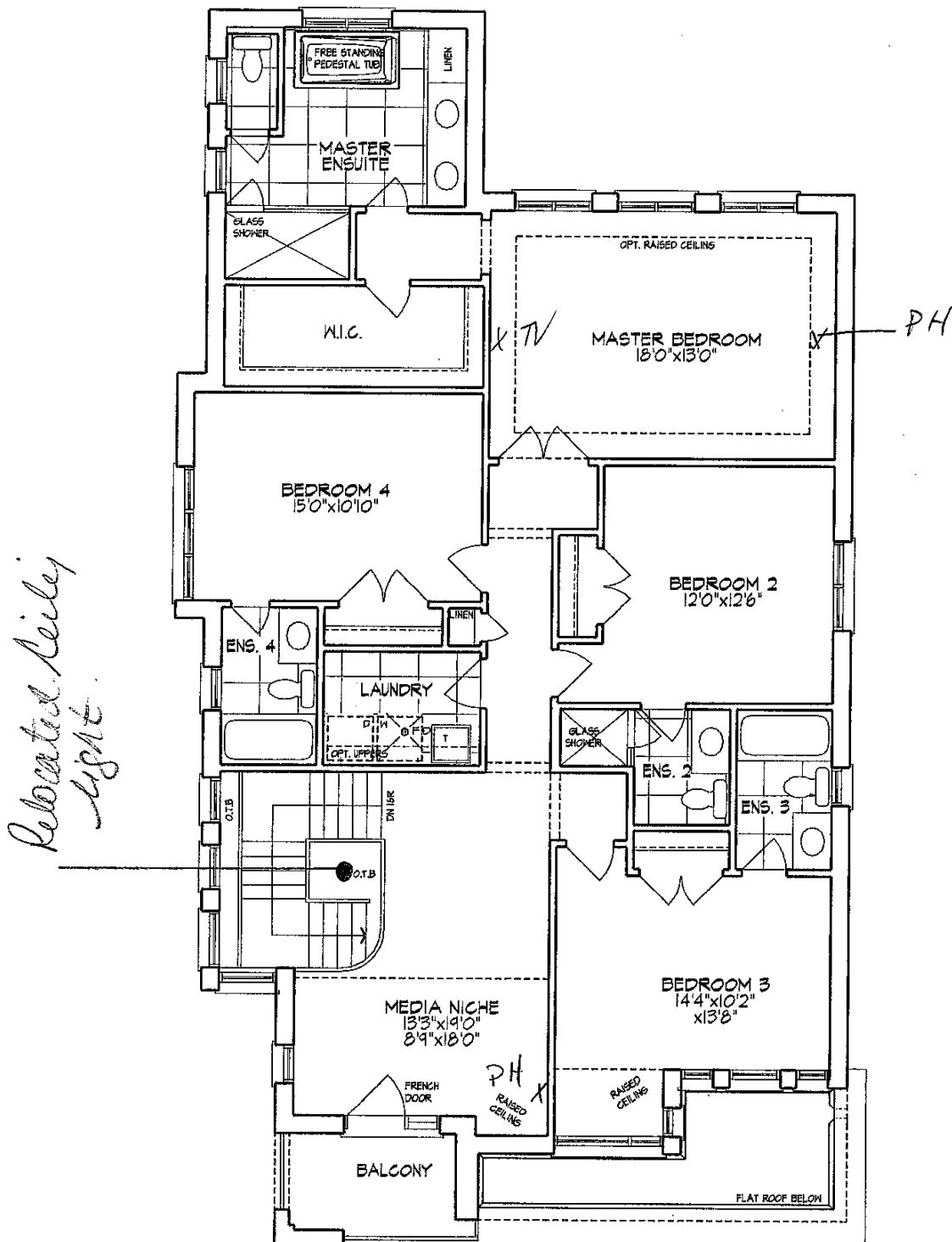
Schedule B-1 Page 3 of 5

50

LOT: 1 Thames PH: 4A
Sketch #2

→ SEE ATTACHED FOR SIGNATURES

→ SEE ATTACHED FOR SIGNATURES



SECOND FLOOR PLAN

Unit 4204 - El. C1
LOT 1 Phase 4A SPENCER - CORNER

3068 sq. ft.

(Finished Basement - 53 sq. ft.)

Materials, specifications, and floor plans are subject to change without notice.
All renderings are artist conceptions. All floor plans are approximate dimensions.
Actual usable floor space may vary from the stated floor area. E. & E.O.

Schedule B-1 Page 2 of 5

Lot: 1 Thames PH: 4A

RE: FRIDGE SPE'S (WIDTH & HEIGHT ONLY)

RF25HMEDBSR

* No waterline rough in has been purchased *

25 cu. ft. 33-inch 4-Door Refrigerator with Counter-Height FlexZone™ Drawer

→ SEE ATTACHED FOR SIGNATURES

→ SEE ATTACHED FOR SIGNATURES

Features

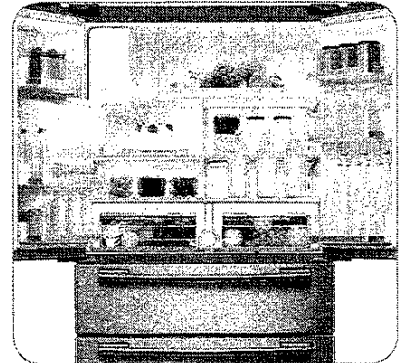
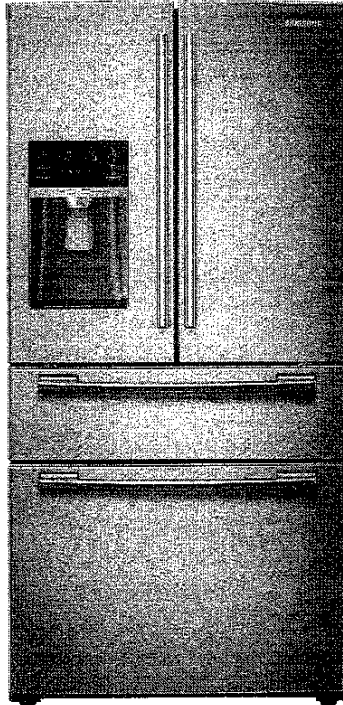
- 33 Inches Wide
- Large Capacity – 25 cu. ft.
- FlexZone™ Drawer with 4 Temperature Control Settings and Smart Divider
- Twin Cooling Plus™
- ENERGY STAR® Compliant
- Ice Master Ice Maker in the Refrigerator
- Premium External Filtered Water and Ice Dispenser
- High-Efficiency Top and Side LED Lighting
- Adjustable Shelf for Tall Oversized Items
- Stainless Steel Accents on Interior Shelving and Door Bins
- EZ-Open Handle™ on Freezer Door and FlexZone™ Drawer
- Two Humidity-Controlled Crispers
- Tempered Glass Spill-Proof Shelves
- Gallon Door Bins
- Auto Pull-Out Upper Freezer Drawer
- Easy-to-Access Water Filter

Convenience

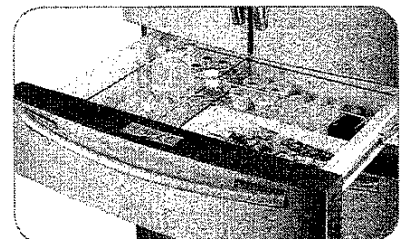
- Cool Tight Door
- Water Filter Indicator
- Door Alarm



ENERGY STAR® rated:
687 kWh/yr



Ice Master



FlexZone™ Drawer

Available Colors



Stainless Steel
(shown)



White



Black

Signature Features

KEEPS YOUR FOOD AND FAMILY ORGANIZED

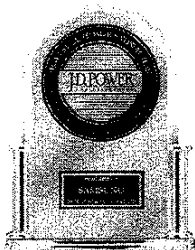
- Adjustable Smart Divider creates four flexible-size compartments.
- Four settings from Chill to Soft Freeze: meats at 29°F, cold drinks at 33°F, deli/snacks at 37°F, and party dishes at 42°F.
- Easy access for kids with counter-height drawer.

TWIN COOLING PLUS™

- Keeps food fresher longer – Twin Cooling Plus™ humidity levels up to 3.5x higher than single cooling.
- Refrigerator air is kept at higher, near commercial grade humidity levels to keep perishable fruits and vegetables fresher longer.
- Drier freezer air means less freezer burn for better-tasting frozen foods.

ICE MASTER

- Produces 10 lbs. of ice per day and stores 4.2 lbs.
- Space-saving design leaves more room in the refrigerator.



Ranked "Highest in Customer
Satisfaction with Refrigerators"
by J.D. Power and Associates.

SAMSUNG

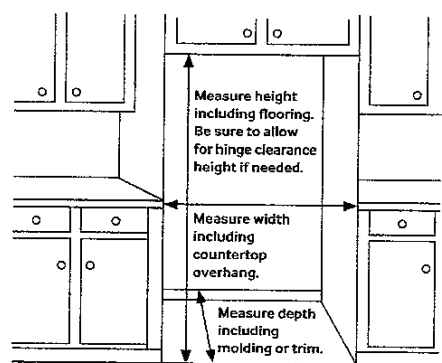
LOT: 1 THAMES PH: 4A
Re: FRIDGE SPEC'S CONT (WIDTH & HEIGHT ONLY)

RF25HMEDBSR → SEE ATTACHED FOR SIGNATURES → SEE ATTACHED FOR SIGNATURES

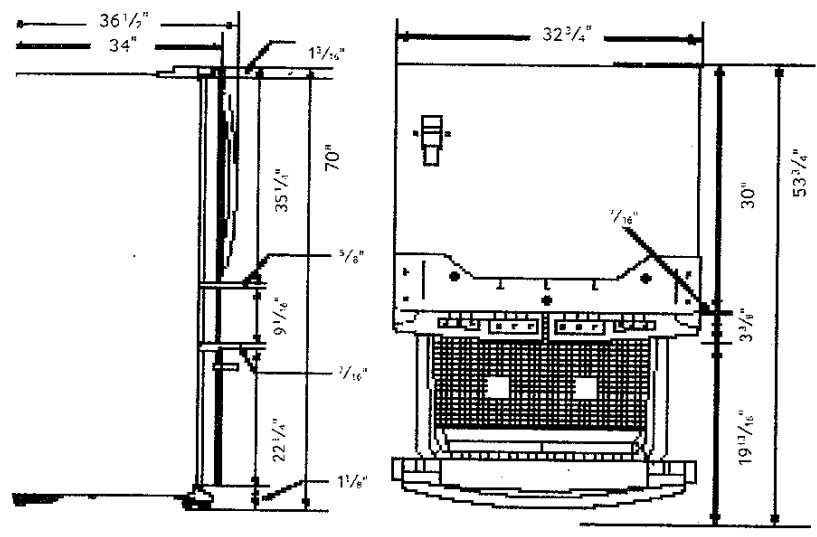
25 cu. ft, 33-inch 4-Door Refrigerator with Counter-Height FlexZone™ Drawer

Installing Your Refrigerator

1. Measure the height, width and depth of the opening, making sure to include baseboards, molding, tile, countertop overhang, etc. Check to be sure there is enough room to open the door (consider walls, islands or other obstacles when measuring).
 2. Refer to illustration below to determine dimensions.
 3. Allow 2" of clearance on hinge side of refrigerator when installing next to a wall where handle may make contact.
 4. Allow 1" minimum clearance at rear for proper air circulation and water/electrical connections. Allow a 3/8" minimum clearance at sides and top for ease of installation.
 5. Ensure each door and entry way in the home is wide enough for the refrigerator to be moved through easily.
- Please note: The following dimension and cutout information is for planning purposes only. For complete installation details consult manual packed with product, or download manual on-line at samsung.com.



Dimensions



Total Capacity: 24.73 cu. ft.

- Refrigerator: 13.98 cu. ft.
- Premium External Filtered Water and Ice Dispenser – Crushed or Cubed Ice
 - Ice Master Ice Maker
 - 2 Humidity-Controlled Crispers
 - 5 Tempered Glass Spill-Proof Shelves
 - Adjustable Shelf for Tall oversized Items
 - 6 Clear Door Bins
 - Right Door: 3 Gallon Bins
 - Left Door: 3 Regular Bins
 - High-Efficiency Top and Side LED Lighting

- FlexZone Drawer: 3.43 cu. ft.
- EZ-Open Handle™
 - 4 Temperature Settings with Smart Divider:
 - Meat/Fish (29°F)
 - Cold Drinks (33°F)
 - Deli/Snacks (37°F)
 - Wine/Party Dishes (42°F)

- Freezer: 7.32 cu. ft.
- EZ-Open Handle
 - 1 Drawer Divider
 - High-Efficiency LED Lighting³

Accessories

Water Filter: HAF-CIN

Warranty

- One (1) Year All Parts and Labor
- Five (5) Years Sealed System Parts and Labor
- Ten (10) Years Compressor Parts Only

Product Dimensions & Weight

Dimensions (WxHxD with hinges, handles and doors): 32 3/4" x 70" x 36 1/2"

Dimensions (WxHxD without hinges and door): 32 3/4" x 68 7/8" x 30"

Dimensions (WxHxD with hinge and door, no handle): 32 3/4" x 70" x 34"

Weight: 332.2 lbs.

Shipping Dimensions & Weight (WxHxD)

Dimensions: 35 1/4" x 76 1/4" x 36 1/4"

Weight: 354.2 lbs.

Color	Model #	UPC Code
Stainless Steel	RF25HMEDBSR	887276966069
White	RF25HMEDBWW	887276967684
Black	RF25HMEDBBC	887276967677



Samsung received the highest numerical score for refrigerators in the proprietary I.D. Power and Associates 2012 Kitchen Appliance Study. Study based on 12,615 total responses measuring 17 brands and measures opinions of consumers about their refrigerator obtained new in the past 24 months. Proprietary study results are based on experiences and perceptions of consumers surveyed in January-February 2012. Your experiences may vary. Visit idpower.com. Actual color may vary. Design, specifications and price subject to change without notice.