



CONSTRUCTION SUMMARY

Kingsmen (Thames) Inc. / Havelock Corners (Kingsmen)

Lot/Unit: 4 Phase/Building: 4A Model/Floor Plan: Spencer (4204) Elev B 4 Bed - 4+1 Bath

CABINETRY

Inv.4648	1 - See fridge spec's attached...	
Line 59593	Note: PURCHASER HAS NOT PURCHASED THE WATERLINE ROUGH IN FOR THEIR FUTURE FRIDGE.	
22May20 / 27May20		

ELECTRICAL

Inv.4648	1 - To SUPPLY AND INSTALL AN ADDITIONAL BASIC RECEPTACLE (NOT DEDICATED) in the great room next to + - the standard T.V. & Phone rough....see sketch # 1	
Line 59594	Note:	
22May20 / 27May20		
Inv.4648	1 - To supply & install the standard T.V. rough in in the great room and master bedroom... see sketch # 1 & # 2	
Line 59589	Note:	
22May20 / 27May20		
Inv.4648	1 - To supply & install the standard Phone rough in in the kitchen, great room and master bedroom...see sketch # 1 & # 2	
Line 59590	Note:	
22May20 / 27May20		
Inv.4648	1 - To supply & install a TELEPHONE rough in in the media room on the second floor.... see sketch # 2	
Line 59592	Note:	
22May20 / 27May20		

HEATING AND AIR CONDITIONING

EXTRAS AS PER OFFER

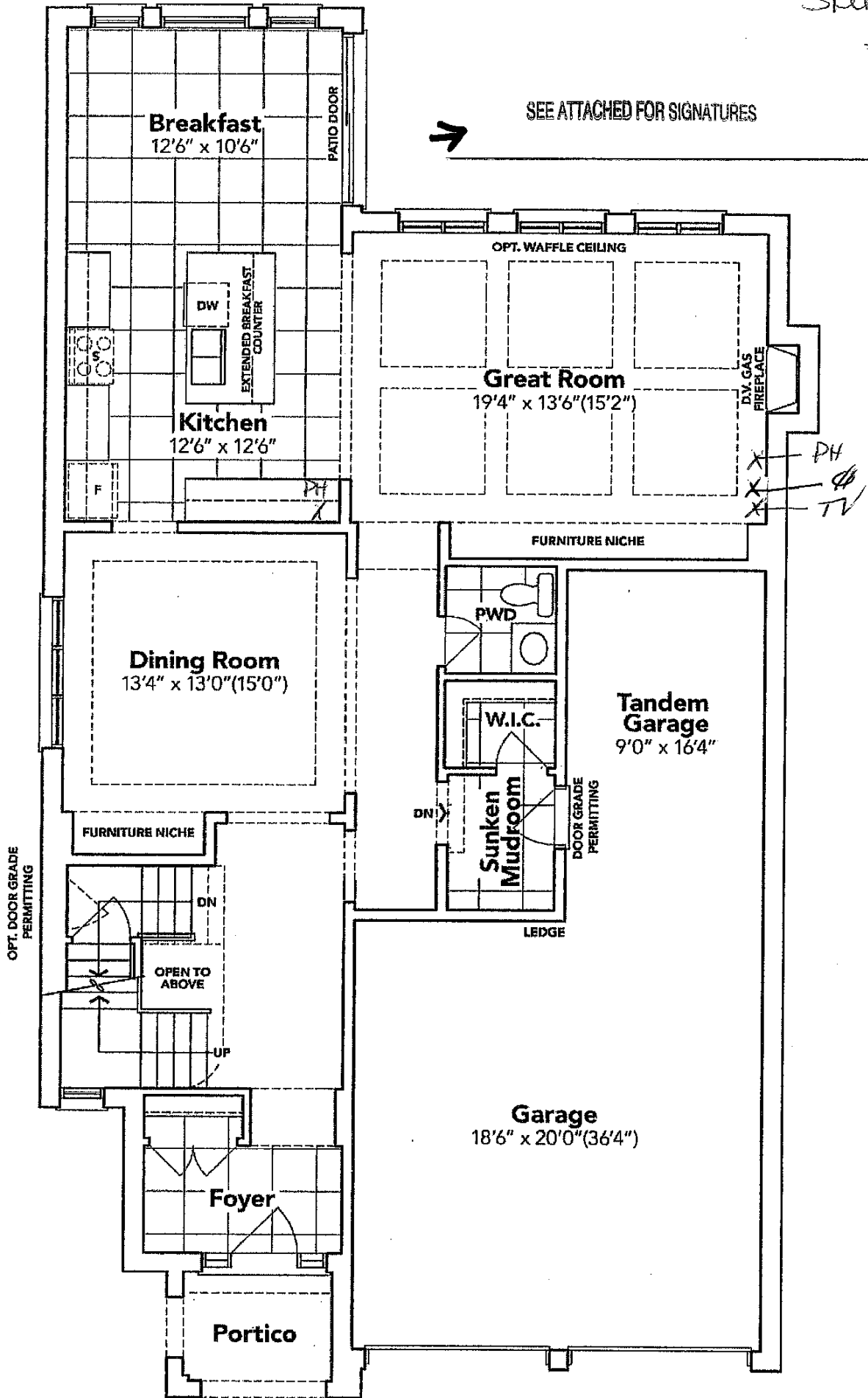
VENDOR TO INSTALL CAPPED GAS LINE (ROUGH-IN ONLY) AT REAR OF HOME FOR FUTURE BBQ LOCATION. LOCATION TO BE FINALIZED AT VENDORS SOLE DISCRETION. <i>Worksheet</i> Note:	
VENDOR TO SUPPLY & INSTALL AIR CONDITIONING UNIT, SIZED ACCORDINGLY, FROM VENDORS STANDARD SAMPLES. <i>Worksheet</i> Note:	

Floor Plan

Phase 4A
Model: Spencer (4204) Elev B 4 Bed - 4+1 Bath
Standard

LOT: 4

Sketch
#1



GROUND FLOOR EL. B

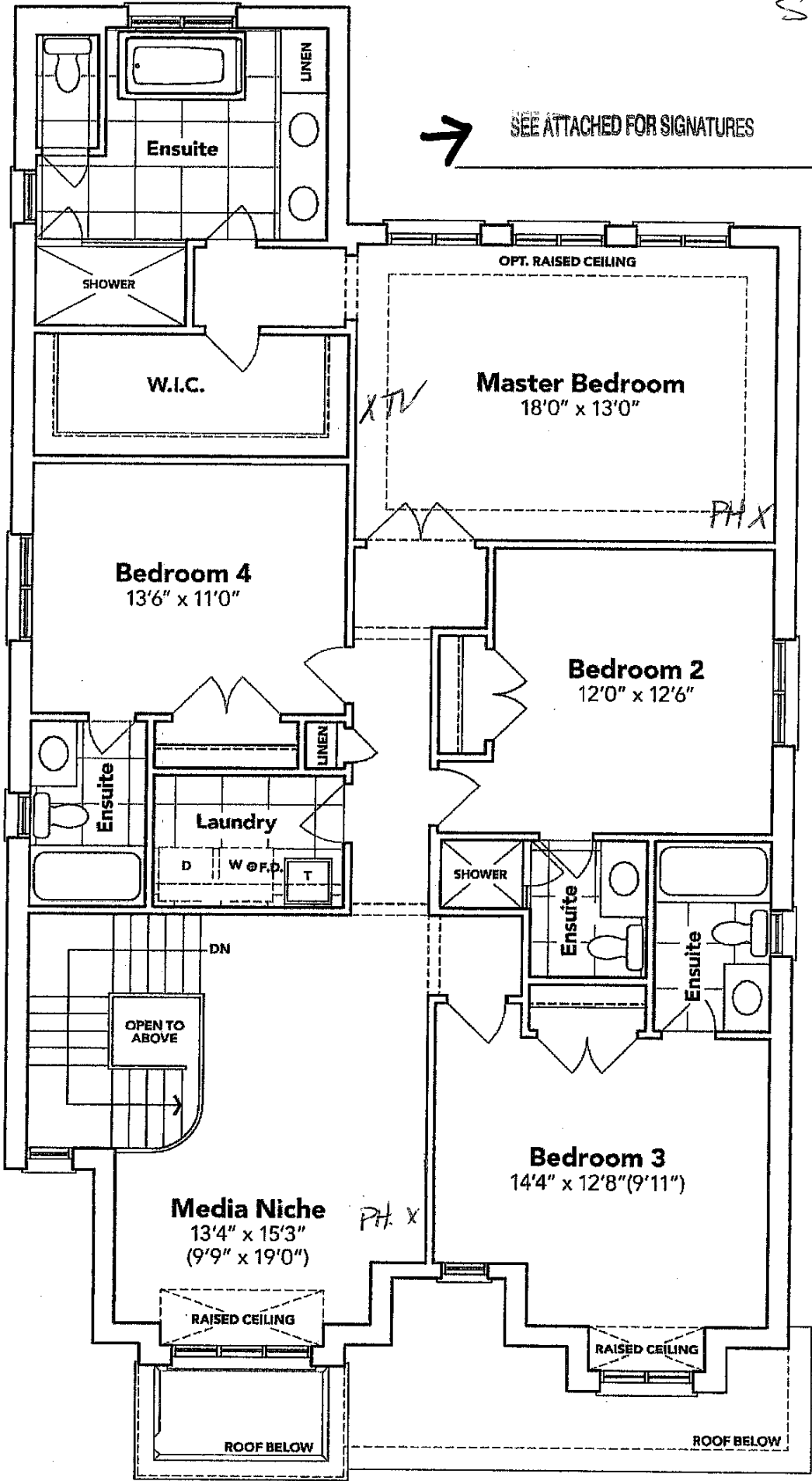
The floor plans and elevations shown are pre-construction plans and may be revised or improved as necessitated by architectural controls and the construction process. The measurements adhere to the rules and regulations of the TARION Warranty Corporation's official method for the calculation of floor area. Materials, specifications and floor plans are subject to change without notice. All house renderings are artist's concept only. Actual usable floor space may vary from the stated floor area. All options shown are upgrades. E. & O. E.

[Signature]

SCHEDULE "B-1"
Floor Plan

LOT 4
Phase 4A
Model: Spencer (4204) Elev B 4 Bed - 4+1 Bath
Standard

LOT: 4
Sketch #2.



SECOND FLOOR EL. B

The floor plans and elevations shown are pre-construction plans and may be revised or improved as necessitated by architectural controls and the construction process. The measurements adhere to the rules and regulations of the TARION Warranty Corporation's official method for the calculation of floor area. Materials, specifications and floor plans are subject to change without notice. All house renderings are artist's concept only. Actual usable floor space may vary from the stated floor area. All options shown are upgrades. E. & O. E.

Lot 4 Thames PH: 4A
RE: FRIDGE SPECS

* NO ROUGH IN WATERLINE PURCHASED *

RF28R7201SR

SAMSUNG

28 cu. ft. 4-Door French Door Refrigerator

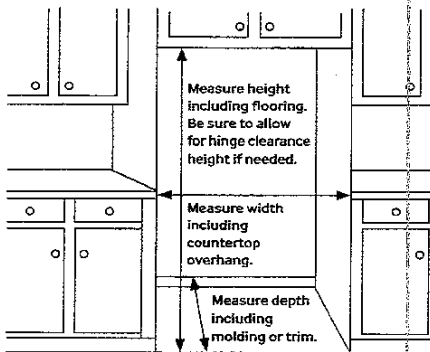
SEE ATTACHED FOR SIGNATURES

Installation Specifications

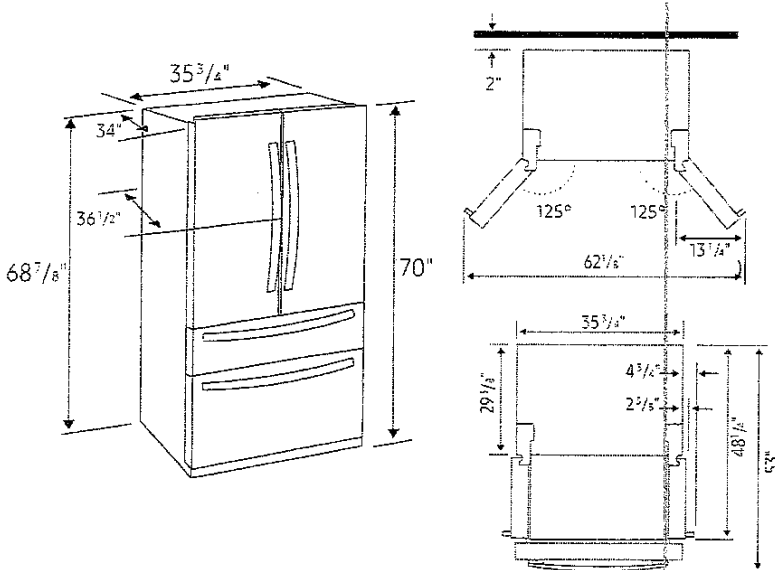
1. Measure the height, width and depth of the opening, making sure to include baseboards, molding tile, countertop overhang, etc. Check to be sure there is enough room to open the door (consider walls, islands or other obstacles when measuring).
2. Refer to illustration below to determine dimensions.
3. Allow 2.5" of clearance on hinge side of refrigerator when installing next to a wall where handle may make contact.
4. Allow 1" minimum clearance at rear for proper air circulation and water/electrical connections. Allow a 3/8" minimum clearance at sides and top for ease of installation.
5. Ensure each door and entryway in the home is wide enough for the refrigerator to be moved through easily.

For optimal usage and to be able to open refrigerator doors completely, do not install next to a wall.

Please note: The following dimension and cutout information is for planning purposes only. For complete installation details, consult manual packed with product, or download manual online at [samsung.com](https://www.samsung.com).



Dimensions



Total Capacity: 28 cu. ft.

Refrigerator: 15.9 cu. ft.

- Modern External Filtered Water and Ice Dispenser
 - Crushed or Cubed Ice
- Ice Max
- 2 Humidity-Controlled Crispers
- Tempered Glass Spill-Proof Shelves
- Adjustable Shelf for Tall Oversized Items
- 6 Door Bins
 - Right Door: 3 Gallon Bins
 - Left Door: 3 Regular Bins
- High-Efficiency LED Lighting

FlexZone™ Drawer: 3.8 cu. ft.

- EZ-Open Handle™
- 4 Temperature Zones with Smart Divider:
 - Meat/Fish (-1°C)
 - Cold Drinks (1°C)
 - Deli/Snacks (3°C)
 - Wine/Party Dishes (5°C)
- High-Efficiency LED Lighting

Freezer: 8.3 cu. ft.

- EZ-Open Handle™
- 1 Drawer Divider
- High-Efficiency LED Lighting

Warranty

One (1) Year Parts and Labour on Refrigerator
Ten (10) Years Parts only on Digital Inverter Compressor

Product Dimensions & Weight

Dimensions (WxHxD with hinges, handles and doors):
35 3/4" x 70" x 36 1/2"

Dimensions (WxHxD without hinges and door):
35 3/4" x 68 7/8" x 29 3/8"

Dimensions (WxHxD with hinge and door, no handle):
35 3/4" x 70" x 34"

Weight: 322 lbs.

Shipping Dimensions & Weight (WxHxD)

Dimensions: 38 1/4" x 75 3/4" x 36 1/4"

Weight: 344 lbs.

Colour	Model #	UPC Code
Fingerprint Resistant Stainless Steel	RF28R7201SR	887276304922
Fingerprint Resistant Black Stainless Steel	RF28R7201SG	887276304915

Assets

Access RF28R7201SR assets on Box.com -
<https://app.box.com/folder/70795415032>

RF28R7201SG -

<https://app.box.com/folder/70796485677>